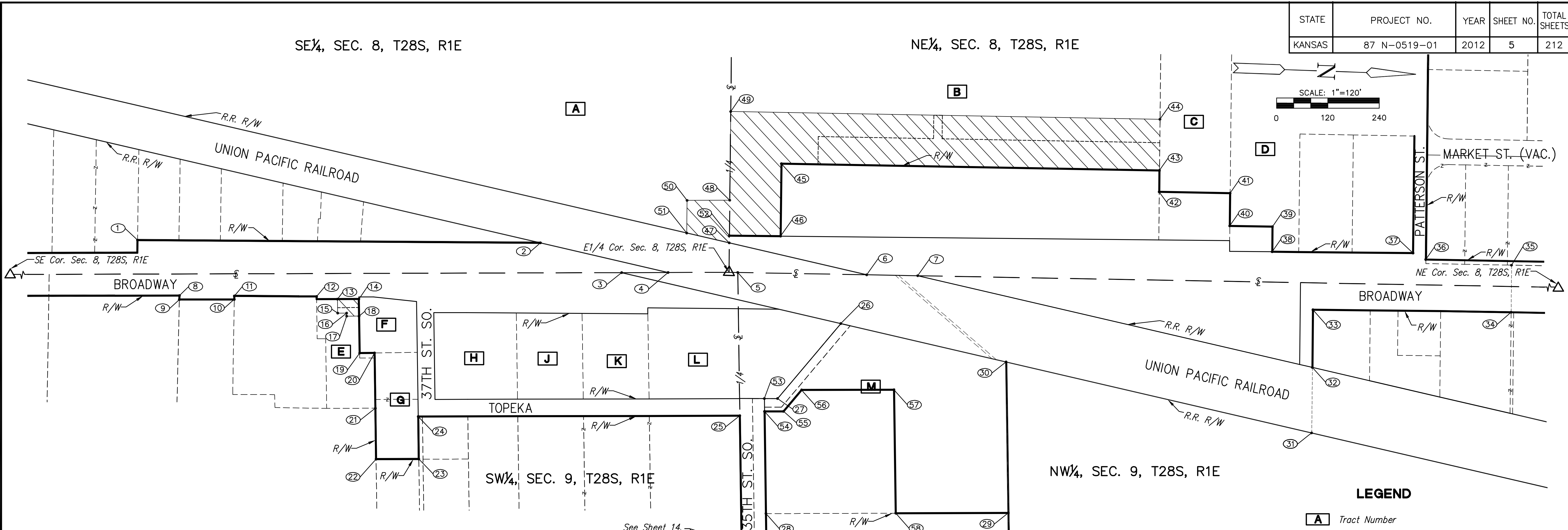


STATE	PROJECT NO.	YEAR	SHEET NO.	TOTAL SHEETS
KANSAS	87 N-0519-01	2012	5	212

MKEC
ENGINEERING
CONSULTANTS, INC.
411 N. WEBB ROAD
WICHITA, K.S. 67206
316-684-9600



BROADWAY BRIDGE AT 34TH STREET SOUTH



- LEGEND**
- A Tract Number
 - ① Coordinate Point Number
 - Right-of-Way
 - Temporary Construction Easement

SECTION CORNER REFERENCE

- E1/4 Cor. Sec. 8, T28S, R1E*
- N = 1665354.88 E = 1650089.88
 - 2" Brass Disc In Broadway Bridge Over Railroad
 - Chiseled "X" on Concrete Hubguard Of Bridge 12.0' NW
 - Chiseled "X" on Concrete Hubguard Of Bridge 12.0' SW
 - East Face Of West Hubguard Of Bridge 8.05' W
 - South End Of Wearing Surface Of Bridge 232.2' S
- NE Cor. Sec. 8, T28S, R1E*
- N = 1668012.20 E = 1650045.31
 - Pk Nail
 - Corner Of Building #3154 S. Broadway 80.63' NW
 - Chiseled "X" on curb 28.83' E-SE
 - Chiseled "X" on curb 57.08' SW
 - Nail And Bottle Cap In NW Side of PP 39.62' NE
 - Center Of Top Of Fire Hydrant 74.36' NW
- SE Cor. Sec. 8, T28S, R1E*
- N = 1662697.57 E = 1650190.71
 - 1/2" Pipe
 - Chiseled "X" on west end of median 41.43' E-NE
 - Chiseled "X" on top of curb 74.69' NE
 - Chiseled "X" on top of curb 76.35' NW
 - Chiseled "X" on top of curb 62.23' SW
 - PK nail in SW side of LP 63.79' SE

PROPERTY OWNER SCHEDULE

TRACT NO.	KEY NO.	PROPERTY OWNER	STREET ADDRESS	MAILING ADDRESS
A	A-15595	LaFarge North America		12950 Worldgate Dr., Herndon, VA 20170-6001
B	A-0019401UP	LaFarge North America		10170 Church Ranch Way, Ste. 200, Westminster, CO 80021-6060
C	A-0019900UP	Lusk, Anita Marie Living Trust	3555 S. Broadway	1608 E. Lewis St., Wichita, KS 67211-1823
D	A-00195000100UP	All Parts Auto Salvage, Inc.	3501 S. Broadway	3501 S. Broadway, Wichita, KS 67216-1029
E	B-15216	Ysidra, Mark	3730 S. Broadway	
F	B-0003601UP	Le, Hai H. & Kimberly D.	3720 S. Broadway	3720 S. Broadway, Wichita, KS 67216-1032
G	B-0003600UP	Ott Brothers Machine Co., Inc.	331 E. 37th St. South	331 E. 37th St. S., Wichita, KS 67216-1602
H	B-0002400UP	Crease, Paul J.	3700 S. Broadway	2409 S. Hydraulic, Wichita, KS 67211-5307
J	B-0004400UP	Campbell's Phoenix Greenhouse Et Al	3639 S. Topeka	3560 S. Broadway, Wichita, KS 67216-1028
K	B-0004200UP	Campbell, Charles M. & Marilyn E.	3601 S. Broadway	2445 Greenwood, Wichita, KS 67216-1253
L	B-0004500UP	Benke, Lynn Reid & Lynn Campbell	3565 S. Topeka	3565 S. Topeka, Wichita, KS 67216-1647
M	B-0003900UP	G & S, LLC		1650 S. Glendale, Wichita, KS 67218-4320
N				
O				
P				
Q				
R				

ROW POINT TABLE

POINT NUMBER	NORTHING	EASTING	DESCRIPTION
1	1663967.7247	1650062.6741	R/W
2	1664911.1552	1650036.2709	R/W
3	1665103.7151	1650099.4084	R/W
4	1665212.4363	1650095.2830	R/W
5	1665375.4329	1650089.5334	R/W
6	1665677.4650	1650084.4682	R/W
7	1665796.9923	1650082.4637	R/W
8	1664070.3500	1650189.3554	R/W
9	1664070.4660	1650198.6800	R/W
10	1664199.0290	1650193.8040	R/W
11	1664198.8802	1650185.7647	R/W
12	1664391.3746	1650180.2508	R/W
13	1664440.6449	1650184.6460	R/W
14	1664490.6090	1650182.7520	R/W
15	1664442.2617	1650217.5186	R/W
16	1664463.1799	1650216.7904	R/W
17	1664463.4432	1650223.8105	R/W
18	1664492.5742	1650222.7062	R/W
19	1664496.8416	1650309.4679	R/W
20	1664531.8009	1650307.7484	R/W
21	1664538.1728	1650437.2034	R/W
22	1664544.0463	1650556.5309	R/W
23	1664644.0497	1650552.7363	R/W
24	1664639.1603	1650453.2576	R/W
25	1665391.9217	1650425.0146	R/W
26	1665620.8915	1650200.7960	R/W
27	1665478.8743	1650381.7365	R/W
28	1665461.1630	1650652.2343	R/W
29	1666028.4496	1650630.7227	R/W

ROW POINT TABLE

POINT NUMBER	NORTHING	EASTING	DESCRIPTION
30	1666010.8817	1650277.2499	R/W
31	1666731.9456	1650418.6077	R/W
32	1666728.2061	1650265.0195	R/W
33	1666724.9165	1650129.9100	R/W
34	1667188.7880	1650119.5304	R/W
35	1667185.8671	1649999.5665	R/W
36	1666984.8958	1650003.0355	R/W
37	1666954.5455	1649989.0429	R/W
38	1666624.6603	1649997.2615	R/W
39	1666623.2290	1649938.5891	R/W
40	1666523.2402	1649940.2660	R/W
41	1666521.3673	1649863.4943	R/W
42	1666355.3906	1649866.2778	R/W
43	1666354.1661	1649816.0835	R/W
44	1666351.2394	1649696.1158	R/W
45	1665468.6372	1649830.9342	R/W
46	1665472.7579	1650000.9249	R/W
47	1665353.2082	1650020.9559	R/W
48	1665350.7848	1649920.9852	R/W
49	1665345.7426	1649712.9783	R/W
50	1665250.8574	1649924.7769	R/W
51	1665252.7117	1650001.2716	R/W
52	1665352.7948	1650003.9034	R/W
53	1665447.9249	165038.8934	R/W
54	1665449.3977	1650412.8593	R/W
55	1665493.8890	1650411.1962	R/W
56	1665534.3670	1650359.6242	R/W
57	1665750.6418	1650351.5689	R/W
58	1665764.9239	1650640.7156	R/W

RIGHT-OF-WAY PLAN
SHEET TITLE
472-84830
PROJECT NUMBER

DESIGN BY: JRA
DRAWN BY: DPC
CHECKED BY: JRA

ISSUED: October 9, 2012
REVISED:

SHEET NO.
5 of 212

PLOTED: Thursday, October 11, 2012 10:25AM

J:\Civil\09081.dwg\RW\09081RW_Plan