

STATE	PROJECT NO.	YEAR	SHEET NO.	TOTAL SHEETS
KANSAS	87 N-0519-01	2012	6	212

MKEC
ENGINEERING
CONSULTANTS, INC.
411 N. WEBB ROAD
WICHITA, K.S. 67206
316-684-9600



BROADWAY BRIDGE AT 34TH STREET SOUTH

**PAVING PLAN
STA. 34+93.90
TO
STA. 39+00**
SHEET TITLE
472-84830
PROJECT NUMBER

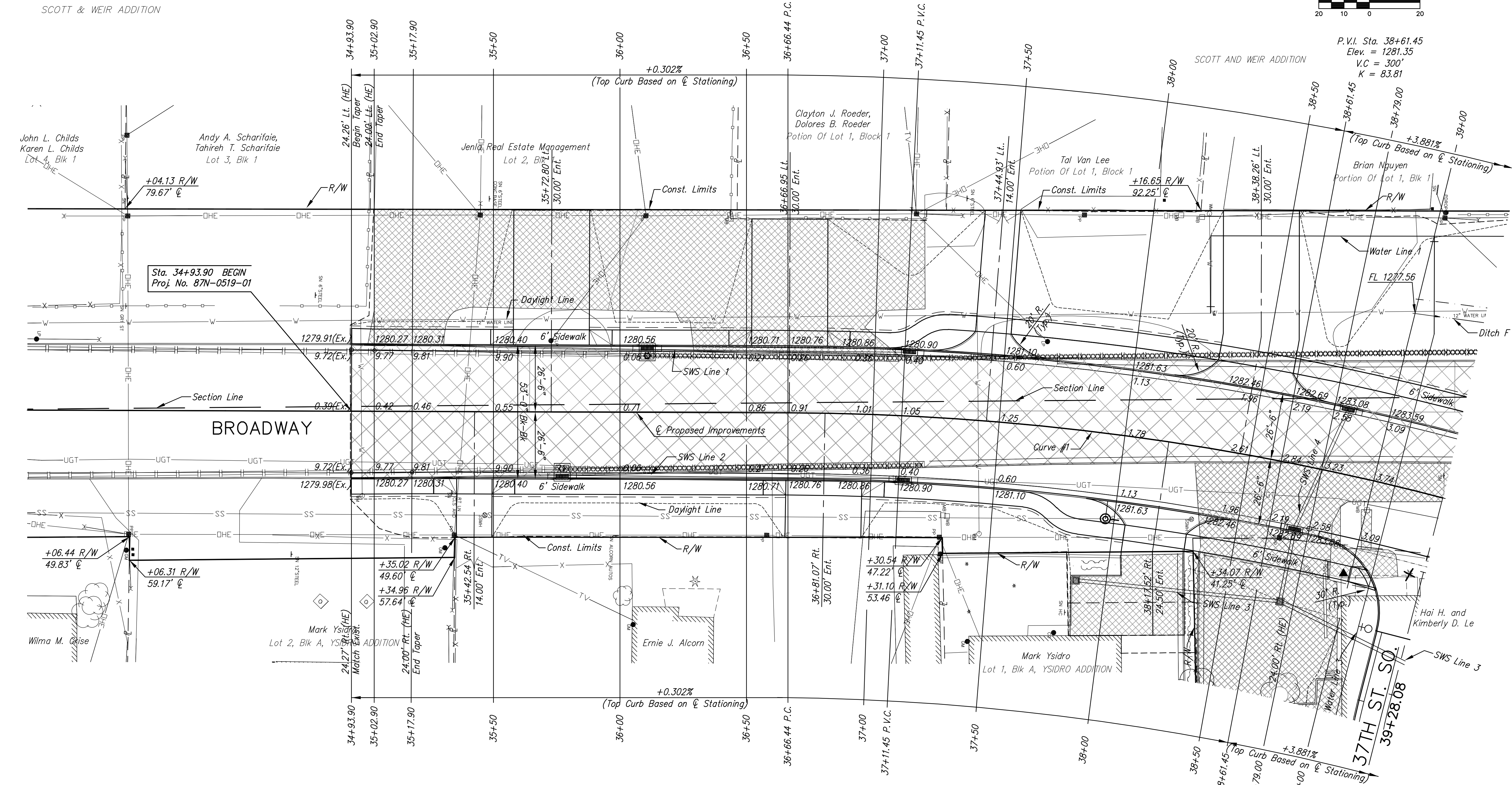
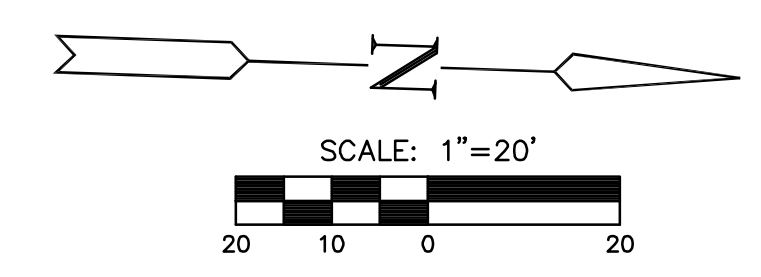
JRA
DESIGN BY
DPC
DRAWN BY
JRA
CHECKED BY

ISSUED
October 9, 2012
REVISED

SHEET NO.
6 of 212

SE 1/4, Sec. 8, T28S, R1E

SW 1/4, Sec. 9, T28S, R1E



UTILITY ADJUSTMENTS				
STATION	OFFSET	EXISTING ELEVATION	PROPOSED ELEVATION	REMARKS
34+98.23	33.4' Rt.	1279.92	1280.39	Water Meter
35+46.81	40.9' Rt.	Unknown	1280.20	San. Sew. Manhole/Replace Lid and Frame

CURVE #1 DATA
P.I. Sta. 38+69.64 (Bk.)=
P.I. Sta. 38+64.60 (Ahd.)
 $\Delta = 22^{\circ}06'41''$ Rt.
 $T = 203.20'$
 $R = 1,040.00'$
 $L = 401.35'$
 $E = 19.67'$
Normal Crown

P.V.I. Sta. 38+61.45
Elev. = 1281.35
V.C. = 300'
K = 83.81

- LEGEND**
- Pavement Removal
 - Driveway, sidewalk and parking lot removal
 - Asphalt Hookup
 - Construct Wheelchair Ramp See Sh. No.
 - Existing Structure
 - XXXXXXXXXX - SWS Removal

PLOTTED: Thursday, October 11, 2012 @ 10:26AM

J:\Civil\09081.dwg\pav\09081-E1