

CURVE DATA
Curve #2
P.I. Sta. 44+85.40 (Bk.)=
P.I. Sta. 44+44.40 (Ahd.)
 $\Delta = 43^{\circ}45'16''$ Lt.
 $T = 417.60'$
 $R = 1,040.00'$
 $L = 794.20'$
 $E = 80.71'$
Normal Crown

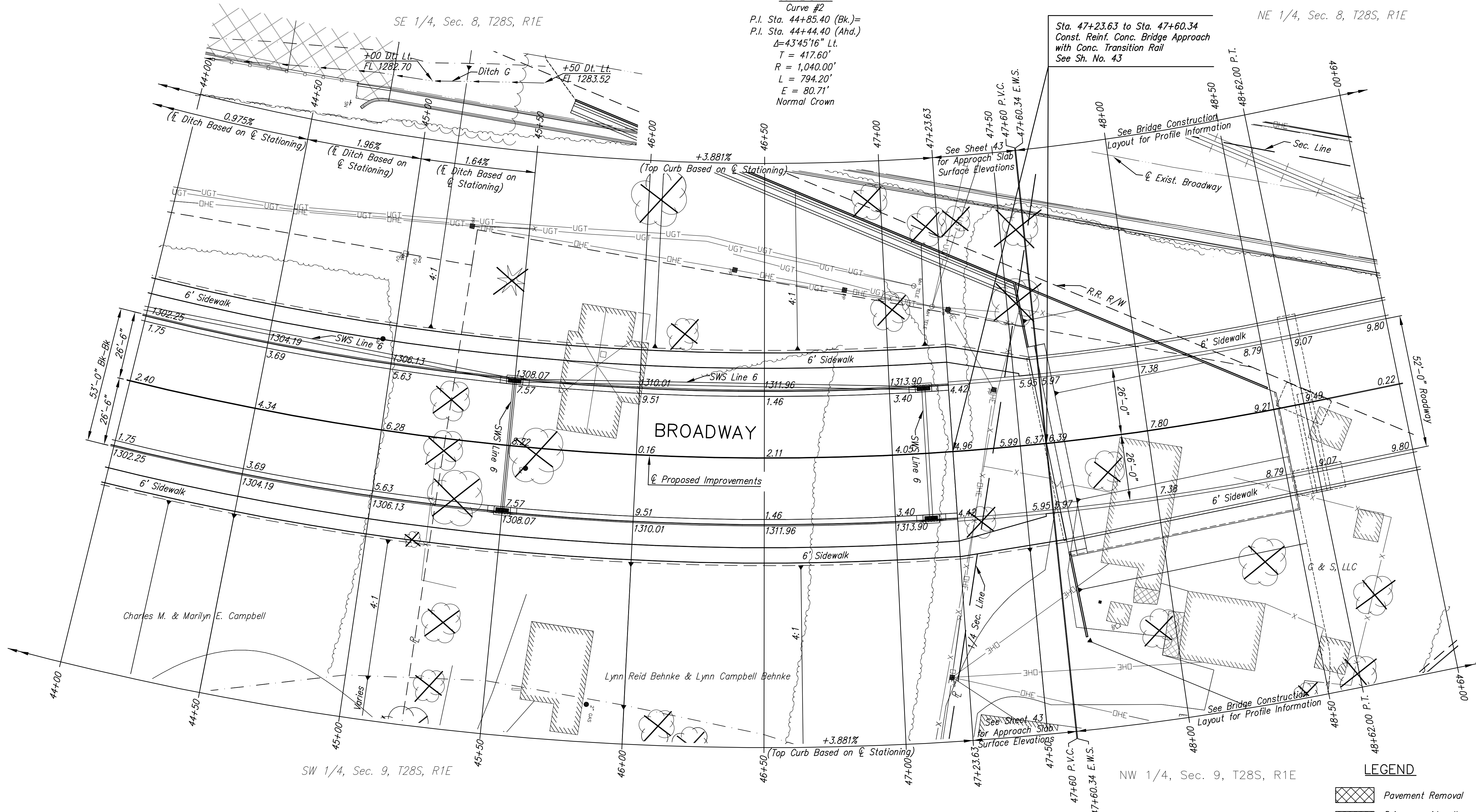
Sta. 47+23.63 to Sta. 47+60.34
Const. Reinf. Conc. Bridge Approach
with Conc. Transition Rail
See Sh. No. 43

NE 1/4, Sec. 8, T28S, R1E

SE 1/4, Sec. 8, T28S, R1E

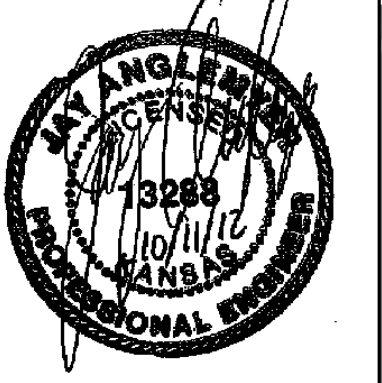
SW 1/4, Sec. 9, T28S, R1E

NW 1/4, Sec. 9, T28S, R1E



UTILITY ADJUSTMENTS				
STATION	OFFSET	EXISTING ELEVATION	PROPOSED ELEVATION	REMARKS
N/A	N/A	N/A	N/A	

- LEGEND**
- Pavement Removal
 - Driveway, sidewalk and parking lot removal
 - Asphalt Hookup
 - Construct Wheelchair Ramp See Sh. No.
 - Existing Structure
 - XXXXXXXXXX · SWS Removal



**BROADWAY BRIDGE
AT 34TH STREET SOUTH**

**PAVING PLAN
STA. 44+00
TO
STA. 49+00**
SHEET TITLE
472-84830
PROJECT NUMBER

DESIGN BY: JRA
DRAWN BY: DPG
CHECKED BY: JRA

ISSUED: October 9, 2012
REVISED:

SHEET NO.
8 of 212