

STATE	PROJECT NO.	YEAR	SHEET NO.	TOTAL SHEETS
KANSAS	87 N-0519-01	2012	11	212

MKEC
ENGINEERING
CONSULTANTS, INC.
411 N. WEBB ROAD
WICHITA, K.S. 67206
316-684-9600



BROADWAY BRIDGE AT 34TH STREET SOUTH

**PAVING PLAN
STA. 59+50
TO
STA. 68+81.64**
SHEET TITLE
472-84830
PROJECT NUMBER

DESIGN BY: JRA
DRAWN BY: DPG
CHECKED BY: JRA

ISSUED: October 9, 2012
REVISED:

SHEET NO.
11 of 212

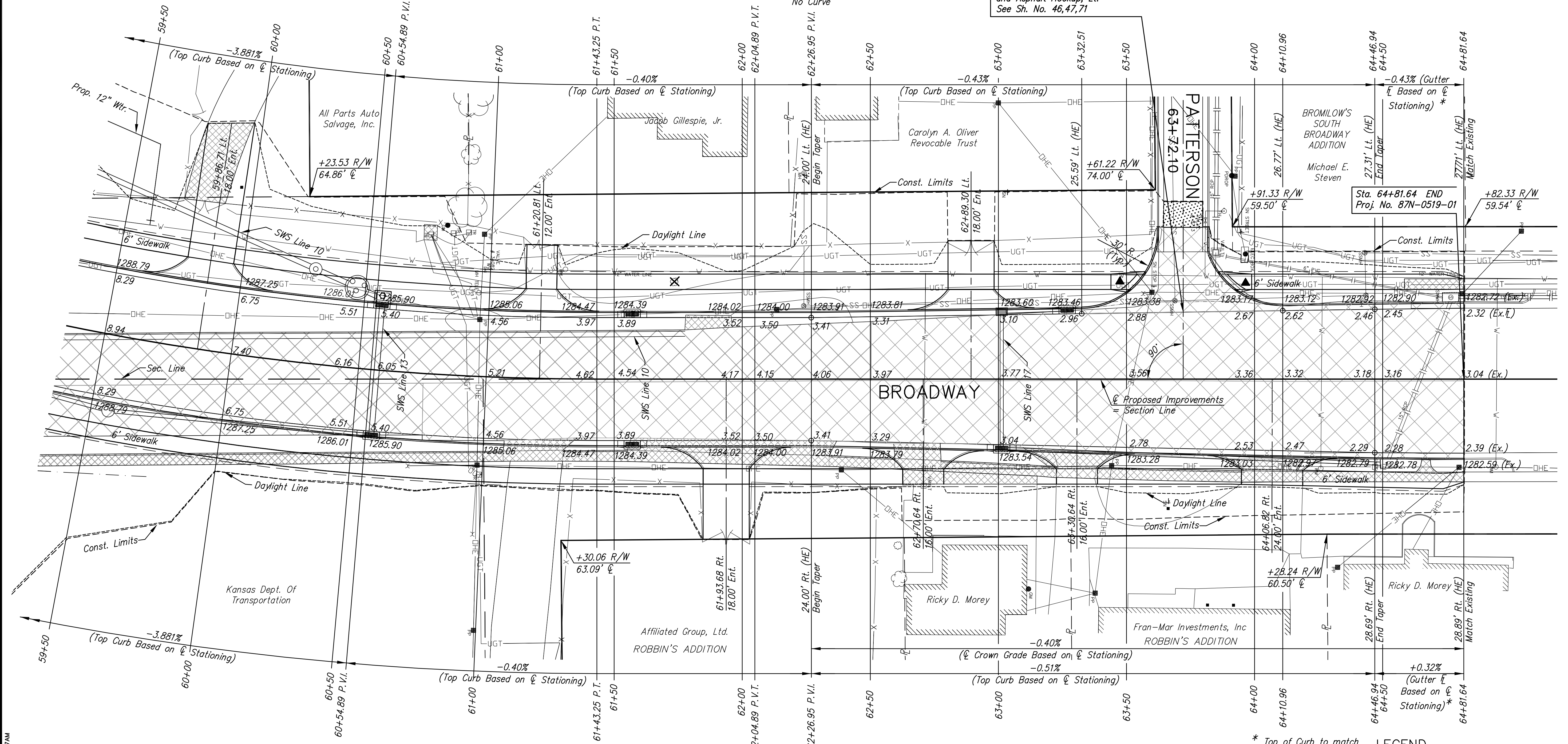
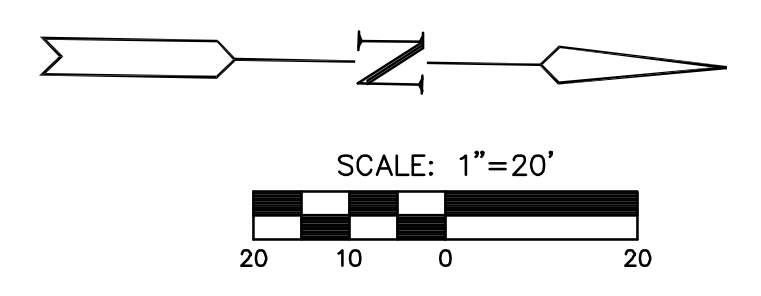
CURVE DATA

Curve #4
P.I. Sta. 59+93.63 (Bk.)=
P.I. Sta. 59+91.52 (Ahd.)
Δ=15'42"41" Lt.
T = 151.73'
R = 1,040.00'
L = 301.35'
E = 11.01'
K = 86.22
Normal Crown

NE 1/4, Sec. 8, T28S, R1E

P.V.I. Sta. 60+26.95
Elev. = 1283.91
No Curve

Sta. 63+72.10 Const.
8" Rein. Conc. Valley Gutter
and Asphalt Hookup, Lt.
See Sh. No. 46,47,71



P.V.I. Sta. 60+54.89
Elev. = 1284.60
V.C = 300'
K = 86.22

P.V.I. Sta. 60+26.95
Elev. = 1283.91
No Curve

NW 1/4, Sec. 9, T28S, R1E

UTILITY ADJUSTMENTS				
STATION	OFFSET	EXISTING ELEVATION	PROPOSED ELEVATION	REMARKS
60+97.79	41.8' Lt.	1286.74	1285.96	Water Valve #34082
61+30.42	42.8' Lt.	1285.84	1285.32	Water Meter
62+24.01	28.6' Lt.	1283.80	1284.41	San. Sewer Manhole
63+68.88	30.6' Lt.	1282.80	1282.84	San. Sewer Manhole
64+25.82	34.8' Rt.	1283.11	1283.07	Water Meter
64+43.47	32.8' Lt.	1283.08	1283.46	San. Sewer Manhole/Replace Frame & Lid

* Top of Curb to match existing Curb/Inlet.

LEGEND

- Pavement Removal
- Driveway, sidewalk and parking lot removal
- Asphalt Hookup
- Construct Wheelchair Ramp See Sh. No.
- Existing Structure
- XXXXXXXXXX SWS Removal

PLOTED: Thursday, October 11, 2012 @ 10:27 AM

J:\Civil\09081.dwg\Pos\09081-EG