

STATE	PROJECT NO.	YEAR	SHEET NO.	TOTAL SHEETS
KANSAS	87 N-0519-01	2012	12	212

MKEC
ENGINEERING
CONSULTANTS, INC.
411 N. WEBB ROAD
WICHITA, K.S. 67206
316-684-9600



BROADWAY BRIDGE AT 34TH STREET SOUTH

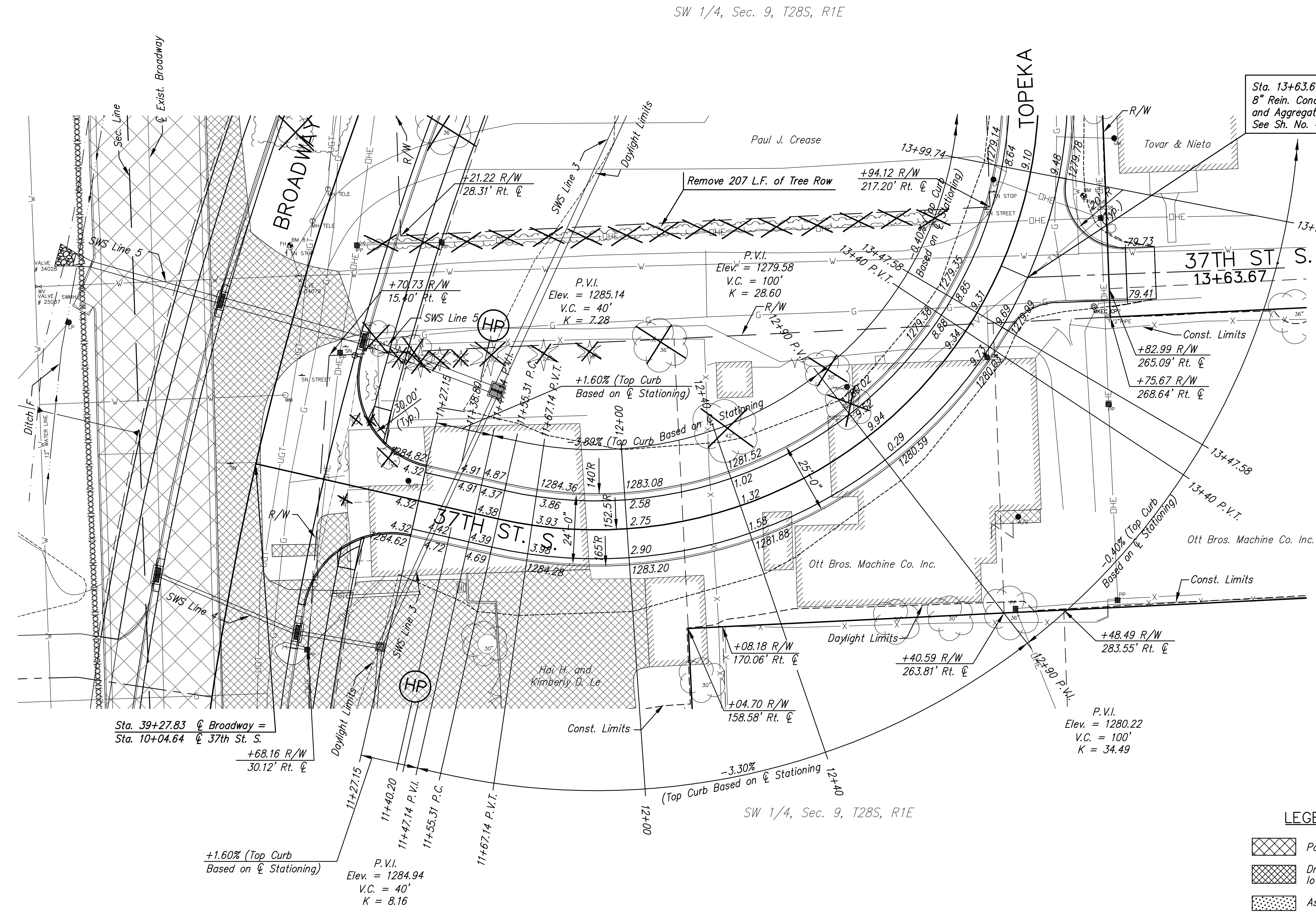
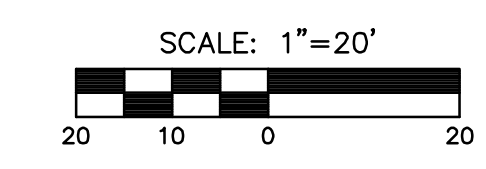
**PAVING PLAN
37TH ST. SO.
BROADWAY TO
TOPEKA**
SHEET TITLE
472-84830
PROJECT NUMBER

DESIGN BY: JRA
DRAWN BY: WNJ
CHECKED BY: JRA

ISSUED
October 9, 2012

REVIS

SHEET NO.
12 of 212



CURVE DATA
P.I. Sta. 12+36.09 (Bk.)=
P.I. Sta. 13+53.88 (Ahd.)
Δ=104°56'58" Lt.
T = 198.56'
R = 152.50'
L = 279.34'
E = 97.86'
Normal Crown

UTILITY ADJUSTMENTS				
STATION	OFFSET	EXISTING ELEVATION	PROPOSED ELEVATION	REMARKS
N/A	N/A	N/A	N/A	

- LEGEND**
- Pavement Removal
 - Driveway, sidewalk and parking lot removal
 - Asphalt Hookup
 - Construct Wheelchair Ramp See Sh. No.
 - Existing Structure
 - XXXXXXXXXX · SWS Removal

PLOTTED: Thursday, October 11, 2012 @ 10:27 AM

J:\Civil\09081.dwg\pav\09081-E7