

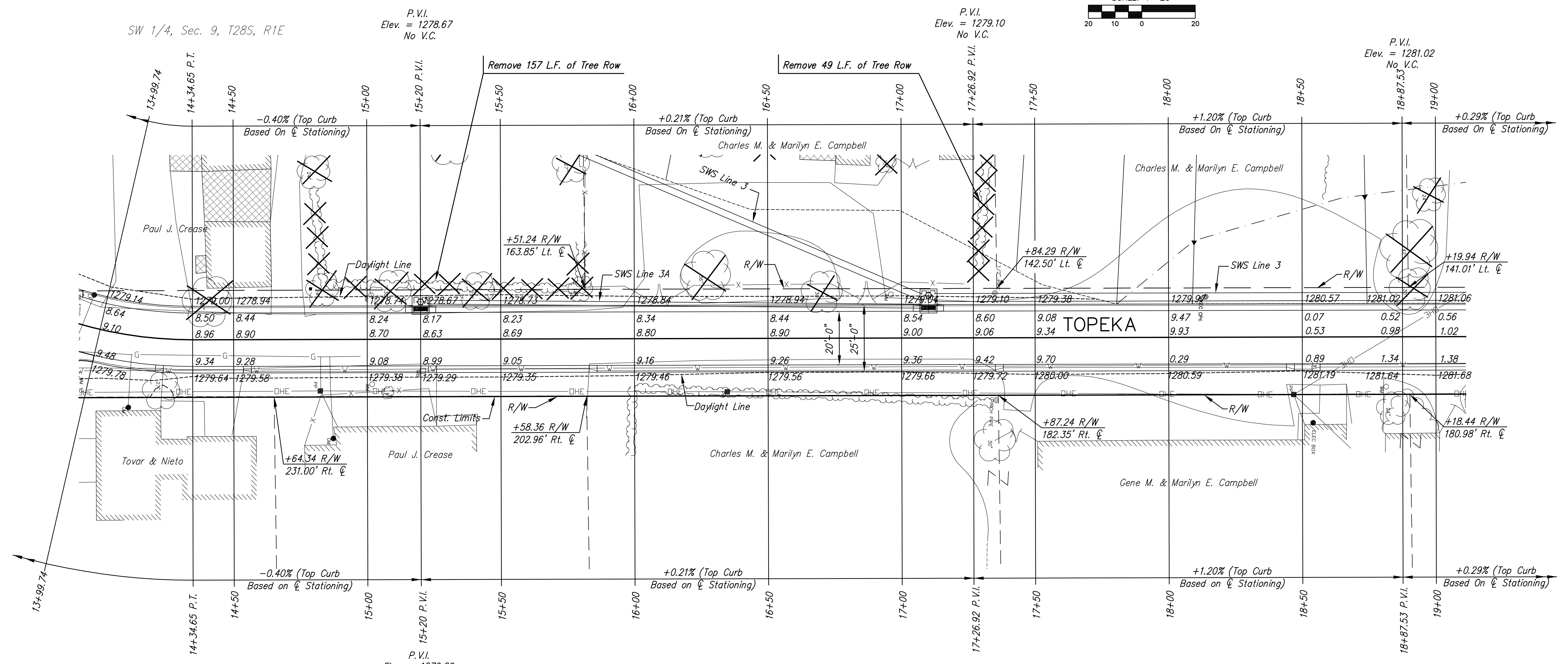
BROADWAY BRIDGE AT 34TH STREET SOUTH

**PAVING PLAN
37TH ST. SO.
AND
TOPEKA ST.**
SHEET TITLE
472-84830
PROJECT NUMBER

DESIGN BY: JRA
DRAWN BY: WNU
CHECKED BY: JRA

ISSUED: October 9, 2012
REVISED:

SHEET NO.
13 of 212



UTILITY ADJUSTMENTS				
STATION	OFFSET	EXISTING ELEVATION	PROPOSED ELEVATION	REMARKS
15+01.79	16.9' Rt.	1279.51	1279.53	Water Meter

- LEGEND**
- Pavement Removal
 - Driveway, sidewalk and parking lot removal
 - Asphalt Hookup
 - Construct Wheelchair Ramp See Sh. No.
 - Existing Structure
 - XXXXXXXXXX · SWS Removal

PLOTED: Thursday, October 11, 2012 @ 10:28AM

J:\Civil\09081.dwg\pav\09081-EB