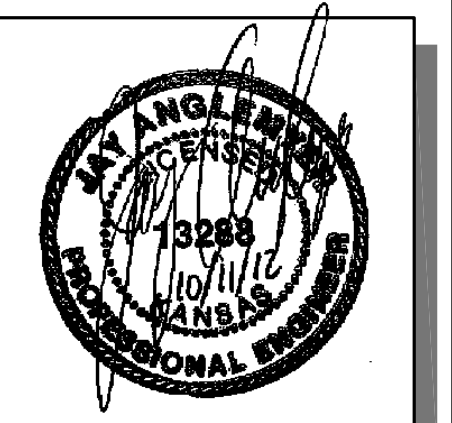


STATE	PROJECT NO.	YEAR	SHEET NO.	TOTAL SHEETS
KANSAS	87 N-0519-01	2012	14	212

MKEC
ENGINEERING
CONSULTANTS, INC.
411 N. WEBB ROAD
WICHITA, K.S. 67206
316-684-9600



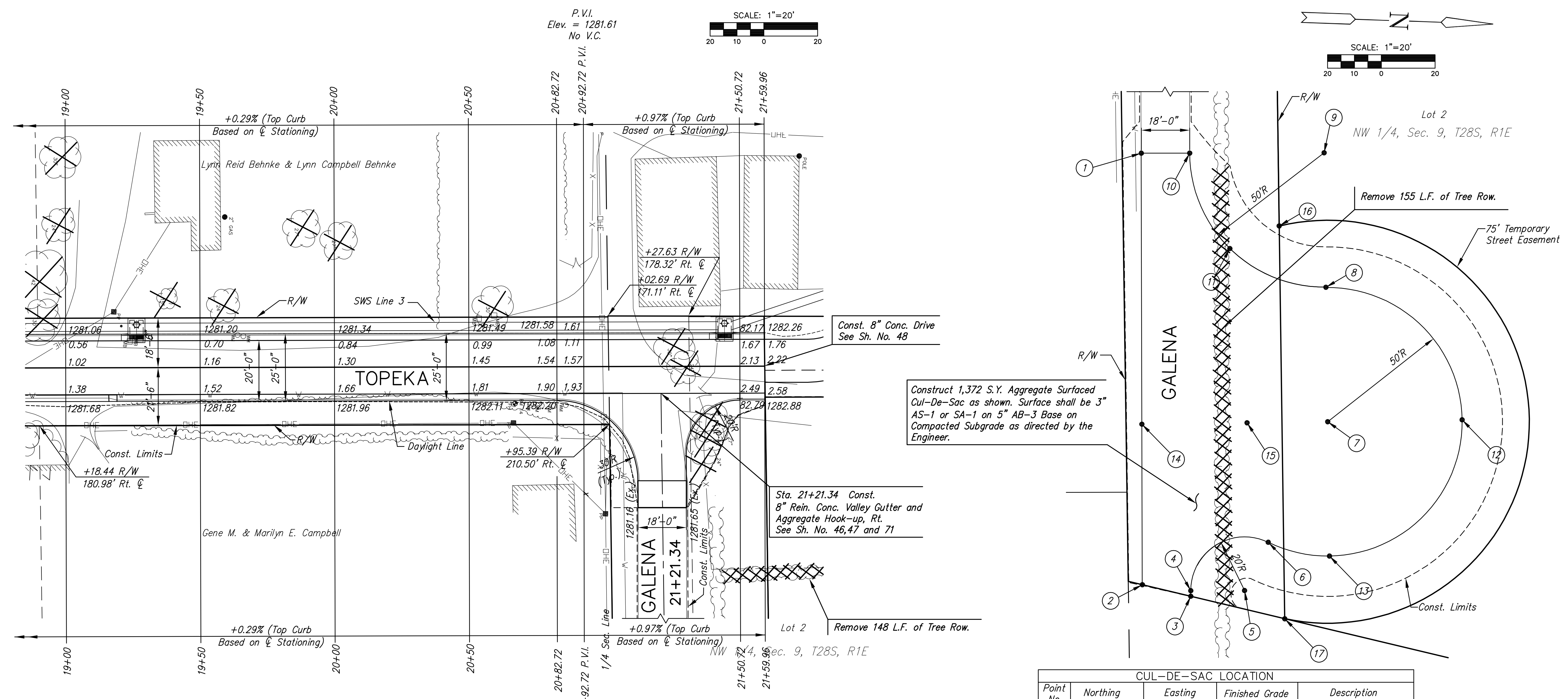
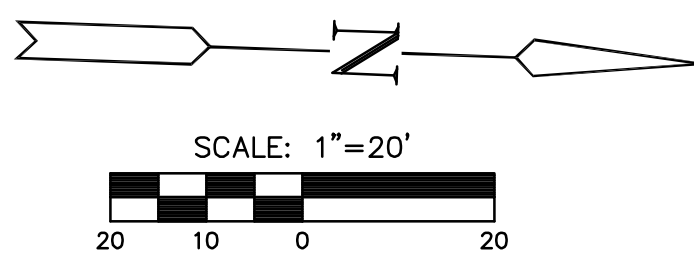
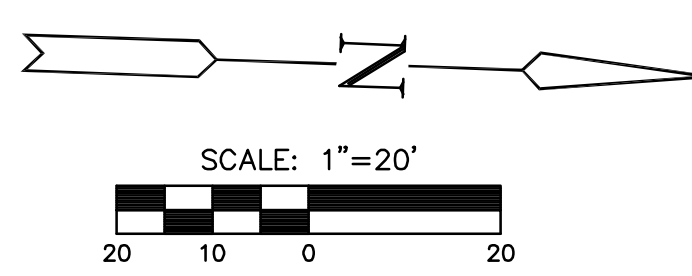
BROADWAY BRIDGE AT 34TH STREET SOUTH

**PAVING PLAN
37TH ST. SO.
AND
TOPEKA ST.**
SHEET TITLE
472-84830
PROJECT NUMBER

DESIGN BY: JRA
DRAWN BY: WNJ
CHECKED BY: JRA

ISSUED
October 9, 2012
REVISED

SHEET NO.
14 of 212



P.V.I.
Elev. = 1281.61
No V.C.

P.V.I.
Elev. = 1282.23
No V.C.

UTILITY ADJUSTMENTS				
STATION	OFFSET	EXISTING ELEVATION	PROPOSED ELEVATION	REMARKS
20+66.75	13.9' Rt.	1282.00	1282.22	Fire Hydrant
20+73.88	13.9' Rt.	1282.09	1282.24	Water Meter
20+77.06	14.4' Rt.	1282.00	1282.26	Water Meter
20+81.65	14.6' Rt.	1281.83	1282.29	Water Meter
20+85.99	14.2' Rt.	1282.10	1282.28	Water Meter

CUL-DE-SAC LOCATION				
Point No.	Northing	Easting	Finished Grade	Description
1	1665413.3655	1650717.0814	1279.15 (M.E.)	Edge
2	1665419.3610	1650877.4143	1278.71 (M.E.)	Edge
3	1665437.5109	1650881.0865	1278.60 (M.E.)	Edge
4	1665437.4329	1650879.0022	-	PC
5	1665457.4189	1650878.2548	-	Radius Center Point
6	1665465.5283	1650860.0173	1279.00	Reverse Compound Curve
7	1665486.1516	1650814.4235	1280.00	Radius Center Point
8	1665483.7348	1650764.4820	1279.00	Reverse Compound Curve
9	1665481.3180	1650714.5404	-	Radius Center Point
10	1665431.3530	1650716.4088	1278.79 (M.E.)	PC
11	1665447.5102	1650751.3783	1279.00	Mid-Point Curve
12	1665536.0932	1650812.0067	1279.00	Point on Curve
13	1665488.5684	1650864.3651	1279.00	Point on Curve
14	1665417.1304	1650817.7636	1279.35	
15	1665456.1867	1650815.8736	1279.50	
16	1665465.5896	1650742.2972	-	R/W
17	1665472.7616	1650888.2186	-	R/W

- LEGEND**
- Pavement Removal
 - Driveway, sidewalk and parking lot removal
 - Asphalt Hookup
 - Construct Wheelchair Ramp See Sh. No.
 - Existing Structure
 - XXXXXXXXXX · SWS Removal

PLOTED: Thursday, October 11, 2012 @ 10:28AM

J:\Civil\09081.dwg\09081-EG