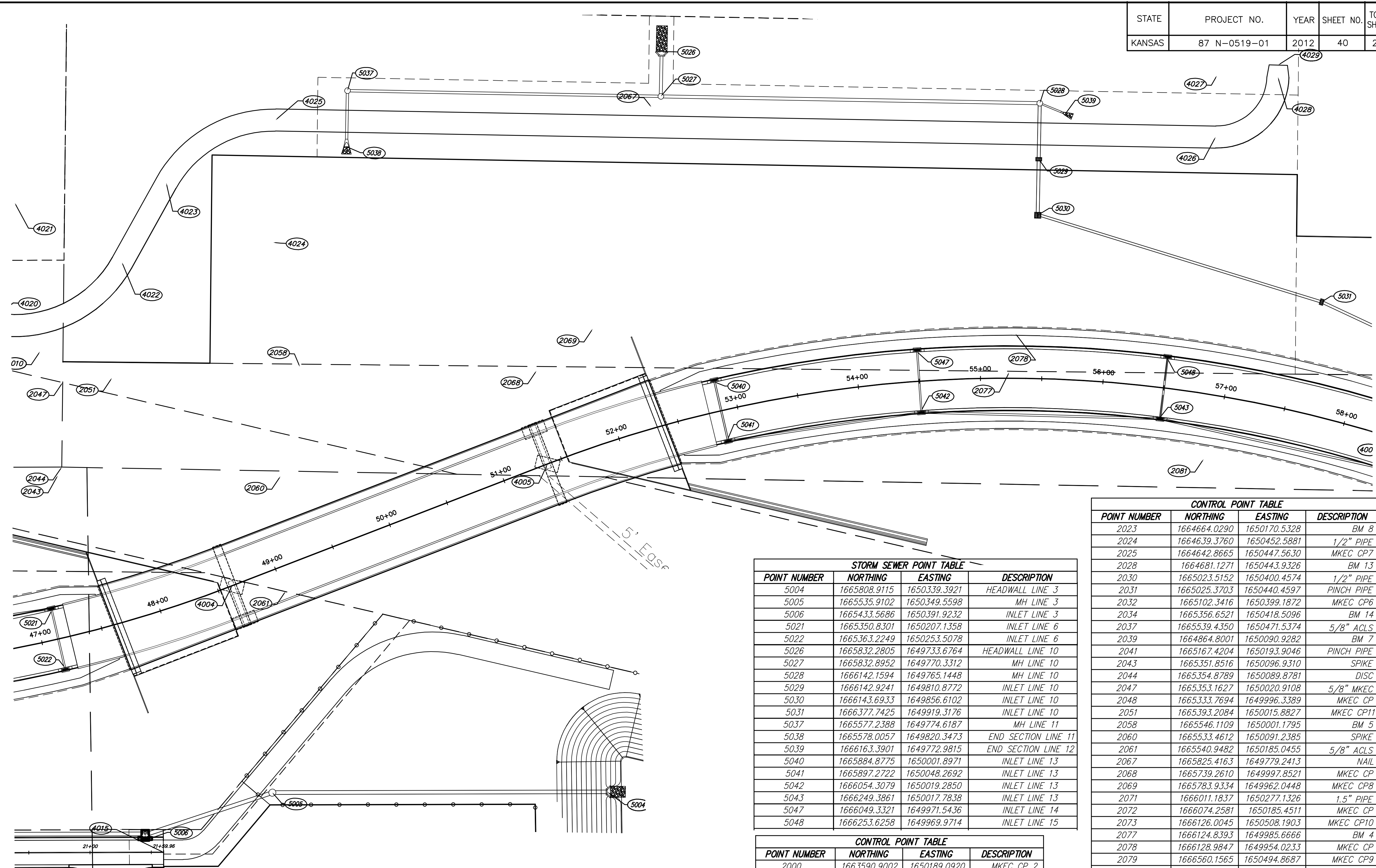


STATE	PROJECT NO.	YEAR	SHEET NO.	TOTAL SHEETS
KANSAS	87 N-0519-01	2012	40	212

MKEC
ENGINEERING
CONSULTANTS, INC.
411 N. WEBB ROAD
WICHITA, K.S. 67206
316-684-9600



BROADWAY BRIDGE AT 34TH STREET SOUTH



POINT NUMBER	NORTHING	EASTING	DESCRIPTION
4004	1665497.1527	1650181.9311	BL PT
4005	1665750.9499	1650073.4739	BL PC
4006	1666159.6292	1651029.8113	BL RP
4007	1666440.0181	1650028.3214	BL RCC
4020	1665289.0511	1649973.7911	PR RD BL PC
4021	1665309.1556	1649875.8329	PR RD BL RP
4022	1665398.2202	1649921.3026	PR RD BL PT
4023	1665432.0140	1649855.1084	PR RD BL PC
4024	1665521.0786	1649900.5781	PR RD BL RP

POINT NUMBER	NORTHING	EASTING	DESCRIPTION
4025	1665519.4018	1649800.5921	PR RD BL PT
4026	1666286.5534	1649787.7267	PR RD BL PC
4027	1666285.7150	1649737.7338	PR RD BL RP
4028	1666335.7120	1649737.1860	PR RD BL PT
4029	1666335.6025	1649727.1866	PR RD BL
4030	1665088.4734	1649225.5936	BL RP
4031	1666720.4070	1649026.8314	BL RP

POINT NUMBER	NORTHING	EASTING	DESCRIPTION
5004	1665808.9115	1650339.3921	HEADWALL LINE 3
5005	1665535.9102	1650349.5598	MH LINE 3
5006	1665433.5686	1650391.9232	INLET LINE 3
5021	1665350.8301	1650207.1358	INLET LINE 6
5022	1665363.2249	1650253.5078	INLET LINE 6
5026	1665832.2805	1649733.6764	HEADWALL LINE 10
5027	1665832.8952	1649770.3312	MH LINE 10
5028	1666142.1594	1649765.1448	MH LINE 10
5029	1666142.9241	1649810.8772	INLET LINE 10
5030	1666143.6933	1649856.6102	INLET LINE 10
5031	1666377.7425	1649919.3176	INLET LINE 10
5037	1665577.2388	1649774.6187	MH LINE 11
5038	1665578.0057	1649820.3473	END SECTION LINE 11
5039	1666163.3901	1649772.9815	END SECTION LINE 12
5040	1665884.8775	1650001.8971	INLET LINE 13
5041	1665897.2722	1650048.2692	INLET LINE 13
5042	1666054.3079	1650019.2850	INLET LINE 13
5043	1666249.3861	1650017.7838	INLET LINE 13
5047	1666049.3321	1649971.5436	INLET LINE 14
5048	1666253.6258	1649969.9714	INLET LINE 15

POINT NUMBER	NORTHING	EASTING	DESCRIPTION
2023	1664664.0290	1650170.5328	BM 8
2024	1664639.3760	1650452.5881	1/2" PIPE
2025	1664642.8665	1650447.5630	MKEC CP7
2028	1664681.1271	1650443.9326	BM 13
2030	1665023.5152	1650400.4574	1/2" PIPE
2031	1665025.3703	1650440.4597	PINCH PIPE
2032	1665102.3416	1650399.1872	MKEC CP6
2034	1665356.6521	1650418.5096	BM 14
2037	1665539.4350	1650471.5374	5/8" ACLS
2039	1664864.8001	1650090.9282	BM 7
2041	1665167.4204	1650193.9046	PINCH PIPE
2043	1665351.8516	1650096.9310	SPIKE
2044	1665354.8789	1650089.8781	DISC
2047	1665353.1627	1650020.9108	5/8" MKEC
2048	1665333.7694	1649996.3389	MKEC CP
2051	1665393.2084	1650015.8827	MKEC CP11
2058	1665546.1109	1650001.1795	BM 5
2060	1665533.4612	1650091.2385	SPIKE
2061	1665540.9482	1650185.0455	5/8" ACLS
2067	1665825.4163	1649779.2413	NAIL
2068	1665739.2610	1649997.8521	MKEC CP
2069	1665783.9334	1649962.0448	MKEC CP8
2071	1666011.1837	1650277.1326	1.5" PIPE
2072	1666074.2581	1650185.4511	MKEC CP
2073	1666126.0045	1650508.1903	MKEC CP10
2077	1666124.8393	1649985.6666	BM 4
2078	1666128.9847	1649954.0233	MKEC CP
2079	1666560.1565	1650494.8687	MKEC CP9
2081	1666285.9136	1650050.9054	MKEC CP3
2082	1666647.8771	1650109.7125	MKEC CP
2083	1666690.6222	1650165.2492	BM 3
2084	1667048.0750	1650009.5100	MKEC CP5
2085	1667282.6482	1650091.8154	BM 2
2086	1668056.3080	1649993.2970	BM 1

POINT NUMBER	NORTHING	EASTING	DESCRIPTION
2000	1663590.9002	1650189.0920	MKEC CP 2
2001	1663708.9044	1650094.0406	PKN
2003	1663796.7849	1650430.2510	PKN
2004	1663854.0118	1650092.0704	PKN
2005	1663925.5904	1650052.6557	PKN
2009	1664207.7053	1650052.9967	BM 9
2011	1664234.1273	1650098.7407	MKEC CP1
2012	1664372.5840	1649842.0704	PKN
2013	1664343.8406	1650246.3389	PKN
2018	1664544.1365	1650556.3136	1/2" BAR
2021	1664798.2251	1650082.1592	MKEC CP4

PLOTED: Thursday, October 11, 2012 @ 10:36AM

J:\Civil\09081.dwg - Control - Bubble - Map - 09081 - SWS Bubble2

**STORM SEWER
BUBBLE
MAP**
SHEET TITLE
472-84830
PROJECT NUMBER

DESIGN BY: JRA
DRAWN BY: WNU
CHECKED BY: JRA

ISSUED
October 9, 2012
REVISED

SHEET NO.
40 of 212