

P.I. Sta. 74+04.47, 0.00' Rt. Central Ave.
1. N = 1687940.59 E = 1604863.62

| STATE | PROJECT NO. | YEAR | SHEET NO. | SHEETS |
|--------|--------------|------|-----------|--------|
| KANSAS | 87 N-0351-01 | 2012 | 10 | 220 |

MKEC
ENGINEERING
CONSULTANTS, INC.

411 N. WEBB ROAD
WICHITA, KS. 67206
316-684-9600



**CENTRAL AVENUE FROM
IMPROVEMENTS FROM
135TH ST. W. TO 119TH ST. W.**

**PAVING PLAN
STA. 68+50
TO
STA. 74+11.4**

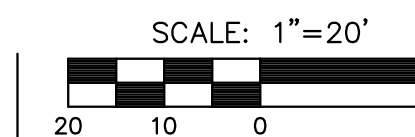
SHEET TITLE
472-84017
PROJECT NUMBER

DESIGN BY **JRA**
DRAWN BY **WNJ**
CHECKED BY **JRA**

ISSUED
November 9, 2012
REVISED

SHEET NO.
10 of 220

Sta. 74+04.47
S 1/4 Cor. Sec. 13, T27S, R2W



P.V.I. Elev.=1341.67
No Curve

R/W = 50' C

Sta. 73+67.59 Const.
8" Reinf. Conc. Valley Cutter
and Aggregate Hook-up
See Sh. Nos. 50, 52

P.V.I. Elev.=1341.67
No Curve

LEGEND

- Pavement Removal
- Brick Pavers
- Construct Wheelchair Ramp
See Sh. No. 57
- SWS Removal
- Light-Stone Rip-Rap
See Sh. 129
- Tree Row Removal
See Sh. 86

UTILITY ADJUSTMENTS

| STATION | OFFSET | EXISTING ELEVATION | PROPOSED ELEVATION | REMARKS |
|---------|--------|--------------------|--------------------|---------|
| N/A | N/A | N/A | N/A | |

SW 1/4, Sec. 13, T27S, R2W

Sta. 67+85.00 to Sta. 73+25.00, Lt.
Remove 540.0 L.F. of Tree Row

LESLIE J. & VENESSA I. ALBERT
AT-00082-0003
E 1/2, SW 1/4
Sec. 13, T27S, R2W

RONNY L. CROW, ETUX.
D 53002
Lot 2, Rainbow
Lake Estates

JOEL R. JR. & KATHRYN J.
RUARK
D 53001
Lot 1, Rainbow
Lake Estates

NW 1/4, Sec. 24, T27S, R2W

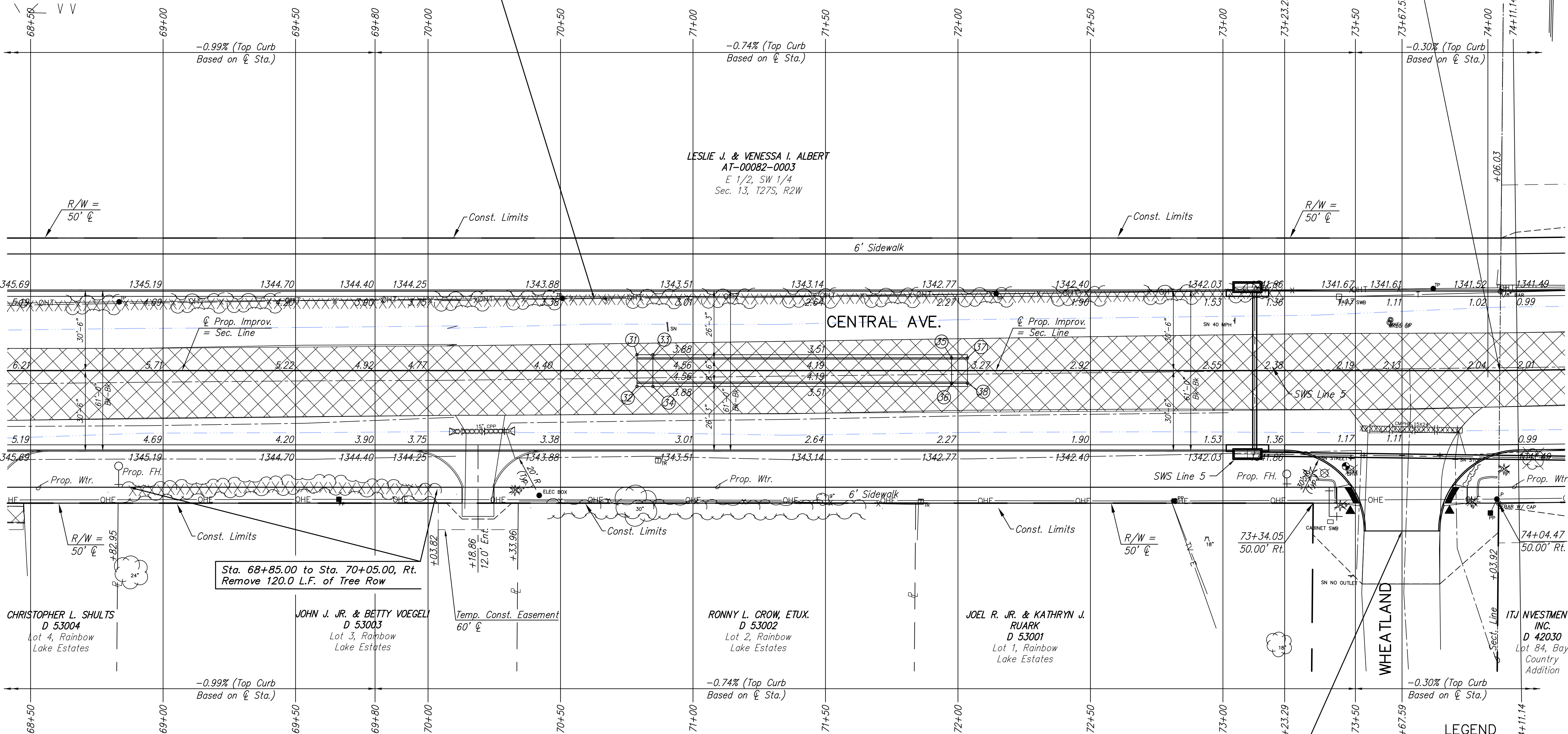
- South Quarter Corner Sec. 13, T27S, R2W
Sta. 74+04.47, 0.00' Rt. Central Ave.
1. N = 1687940.59 E = 1604863.62
2. 3/4" pipe 15" below asphalt road surface.
3. 3/4" pipe with PEC cap
4. Nail and shiner in East face of telephone pole
5. 3 nails in East face of gate post
6. 60d nail in 30" Elm Tree
- 50.02' S
39.80' NW
31.92' N
44.13' SE

P.V.I. Elev.=1344.40
No Curve

P.V.I. Elev.=1344.40
No Curve

Sta. 68+85.00 to Sta. 70+05.00, Rt.
Remove 120.0 L.F. of Tree Row

JOHN J. JR. & BETTY VOEGEL
D 53003
Lot 3, Rainbow
Lake Estates



| POINT NO. | STATION | OFFSET | ELEVATION | |
|-----------|----------|-----------|-----------|----------|
| | | | FLOWLINE | TOP CURB |
| 31 | 70+78.86 | 6.00' Lt. | 1344.31 | 1344.32 |
| 32 | 70+78.86 | 6.00' Rt. | 1344.31 | 1344.32 |
| 33 | 70+84.86 | 6.00' Lt. | 1344.28 | 1344.95 |
| 34 | 70+84.86 | 6.00' Rt. | 1344.28 | 1344.95 |
| 35 | 71+97.59 | 6.00' Lt. | 1343.23 | 1343.90 |
| 36 | 71+97.59 | 6.00' Rt. | 1343.23 | 1343.90 |
| 37 | 72+03.59 | 6.00' Lt. | 1343.18 | 1343.19 |
| 38 | 72+03.59 | 6.00' Rt. | 1343.18 | 1343.19 |

BM#17 City of Wichita benchmark disc on Southwest corner of Central and Wheatland, 24' West of centerline Wheatland and 36' South of centerline Central.
Sta. 73+46.42, 35.98' Rt. Elev.=1342.80