

**CENTRAL AVENUE FROM
IMPROVEMENTS FROM
135TH ST. W. TO 119TH ST. W.**

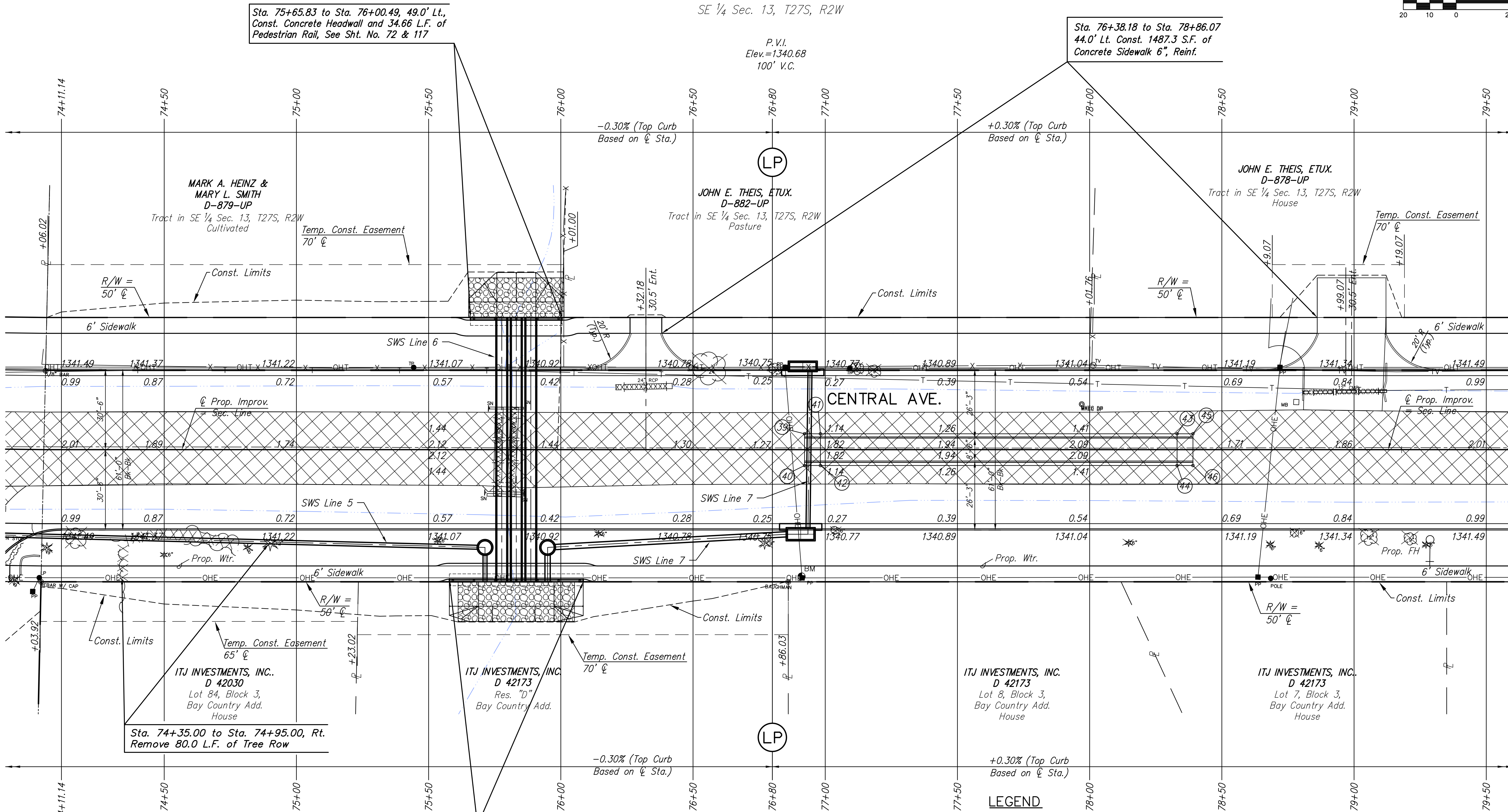
**PAVING PLAN
STA. 74+11.14
TO
STA. 79+50**

SHEET TITLE
472-84017
PROJECT NUMBER

DESIGN BY **JRA**
DRAWN BY **WNJ**
CHECKED BY **JRA**

ISSUED
November 9, 2012
REVISED

SHEET NO.
11 of 220



POINT NO.	STATION	OFFSET	ELEVATION	
			FLOWLINE	TOP CURB
39	76+92.18	6.00' Lt.	1341.13	1341.14
40	76+92.18	6.00' Rt.	1341.13	1341.14
41	76+98.18	6.00' Lt.	1341.13	1341.80
42	76+98.18	6.00' Rt.	1341.13	1341.80
43	78+33.07	6.00' Lt.	1341.53	1342.20
44	78+33.07	6.00' Rt.	1341.53	1342.20
45	78+39.07	6.00' Lt.	1341.54	1341.55
46	78+39.07	6.00' Lt.	1341.54	1341.55

UTILITY ADJUSTMENTS				
STATION	OFFSET	EXISTING ELEVATION	PROPOSED ELEVATION	REMARKS
N/A	N/A	N/A	N/A	

- LEGEND**
- Pavement Removal
 - Brick Pavers
 - Construct Wheelchair Ramp See Sh. No. 57
 - xxxxxxx · SWS Removal
 - Light-Stone Rip-Rap See Sh. 129
 - Tree Row Removal See Sh. 86

BM#18 RR spike in North face of 2nd power pole East of Wheeland on South side Central.
Sta. 76+91.06, 47.98' Rt. Elev.=1341.65

PLOTTED: Wednesday, November 14, 2012 @ 01:45PM

L:\Civil\04238.dwg\pav\04238e07.dwg