

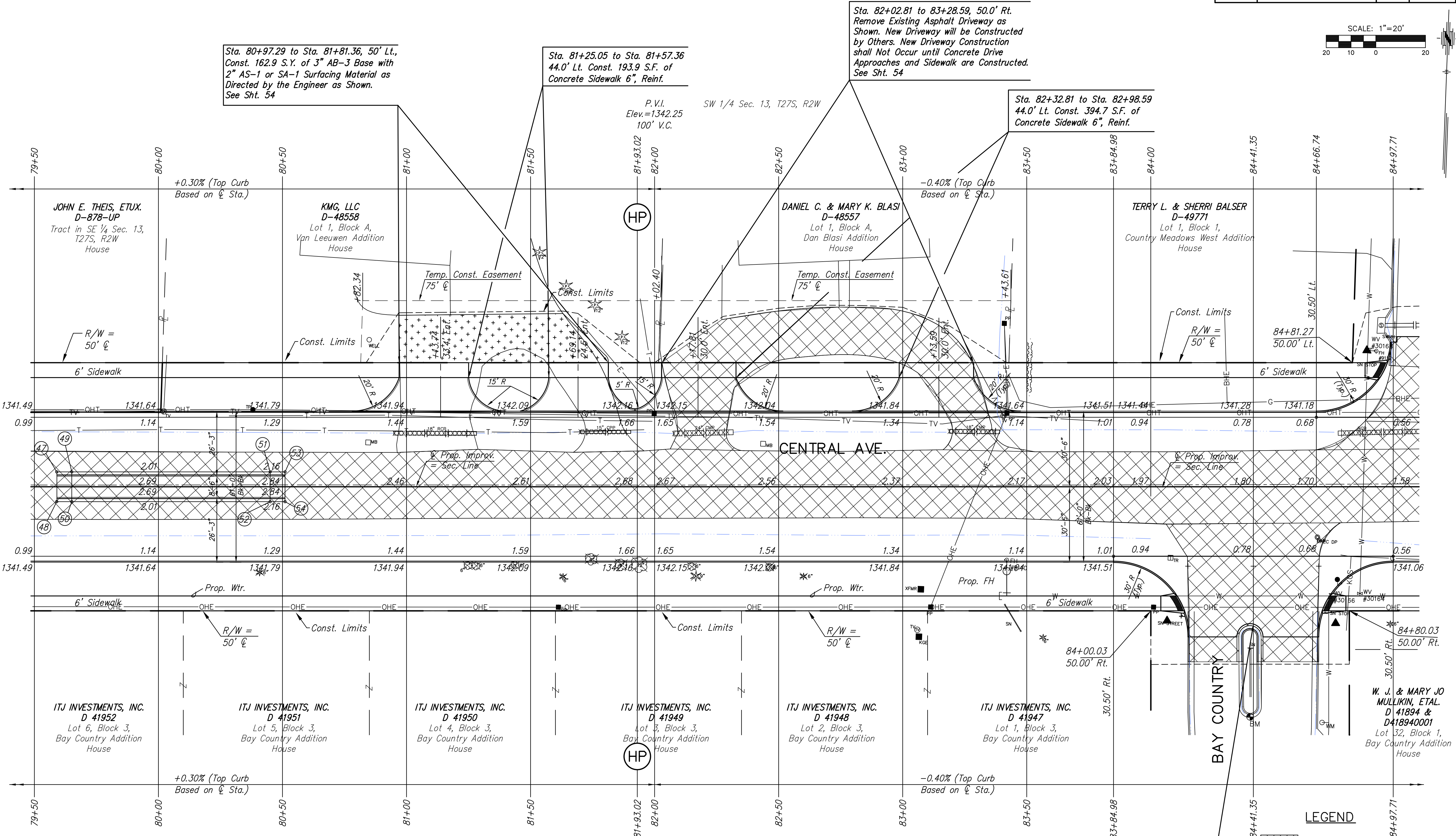
**CENTRAL AVENUE FROM
IMPROVEMENTS FROM
135TH ST. W. TO 119TH ST. W.**

**PAVING PLAN
STA. 79+50
TO
STA. 84+97.71**
SHEET TITLE
472-84017
PROJECT NUMBER

DESIGN BY: JRA
DRAWN BY: WNU
CHECKED BY: JRA

ISSUED: November 9, 2012
REVISED:

SHEET NO.
12 of 220



Sta. 80+97.29 to Sta. 81+81.36, 50' Lt.,
Const. 162.9 S.Y. of 3" AB-3 Base with
2" AS-1 or SA-1 Surfacing Material as
Directed by the Engineer as Shown.
See Sht. 54

Sta. 81+25.05 to Sta. 81+57.36
44.0' Lt. Const. 193.9 S.F. of
Concrete Sidewalk 6", Reinf.

Sta. 82+02.81 to 83+28.59, 50.0' Rt.
Remove Existing Asphalt Driveway as
Shown. New Driveway will be Constructed
by Others. New Driveway Construction
shall Not Occur until Concrete Drive
Approaches and Sidewalk are Constructed.
See Sht. 54

Sta. 82+32.81 to Sta. 82+98.59
44.0' Lt. Const. 394.7 S.F. of
Concrete Sidewalk 6", Reinf.

Sta. 84+41.35 Const.
8" Reinf. Conc. Valley Gutter
and Side Street Pavement.
See Sh. No. 50, 52

BM#19 Chiseled square on top of curb at South end of median
island on Bay Country, 93' South of centerline Central.
Sta. 84+40.03, 92.70' Rt. Elev.=1342.76

MEDIAN LOCATION				
POINT NO.	STATION	OFFSET	ELEVATION	
			FLOWLINE	TOP CURB
47	79+59.07	6.00' Lt.	1341.87	1341.88
48	79+59.07	6.00' Rt.	1341.87	1341.88
49	79+65.07	6.00' Lt.	1341.88	1342.55
50	79+65.07	6.00' Rt.	1341.88	1342.55
51	80+45.04	6.00' Lt.	1342.22	1342.89
52	80+45.04	6.00' Rt.	1342.22	1342.89
53	80+51.04	6.00' Lt.	1342.24	1342.25
54	80+51.04	6.00' Rt.	1342.24	1342.25

UTILITY ADJUSTMENTS				
STATION	OFFSET	EXISTING ELEVATION	PROPOSED ELEVATION	REMARKS
84+71.72	43.02' Rt.	1341.78	1343.05	Water Valve
84+88.29	42.98' Rt.	1342.53	1341.21	Water Valve
84+88.33	54.82' Lt.	1341.08	1341.67	Water Valve

PLOTTER: Wednesday, November 14, 2012 @ 01:42PM

I:\Civil\04238\dwg\pav\04238p08.dwg