

**CENTRAL AVENUE
IMPROVEMENTS FROM
135TH ST. W. TO 119TH ST. W.**

**PAVING PLAN
STA 84+66.74
TO
STA 90+50**
SHEET TITLE
472-84017
PROJECT NUMBER

DESIGN BY
JRA
DRAWN BY
WNJ
CHECKED BY
JRA

ISSUED
November 9, 2012
REVISED

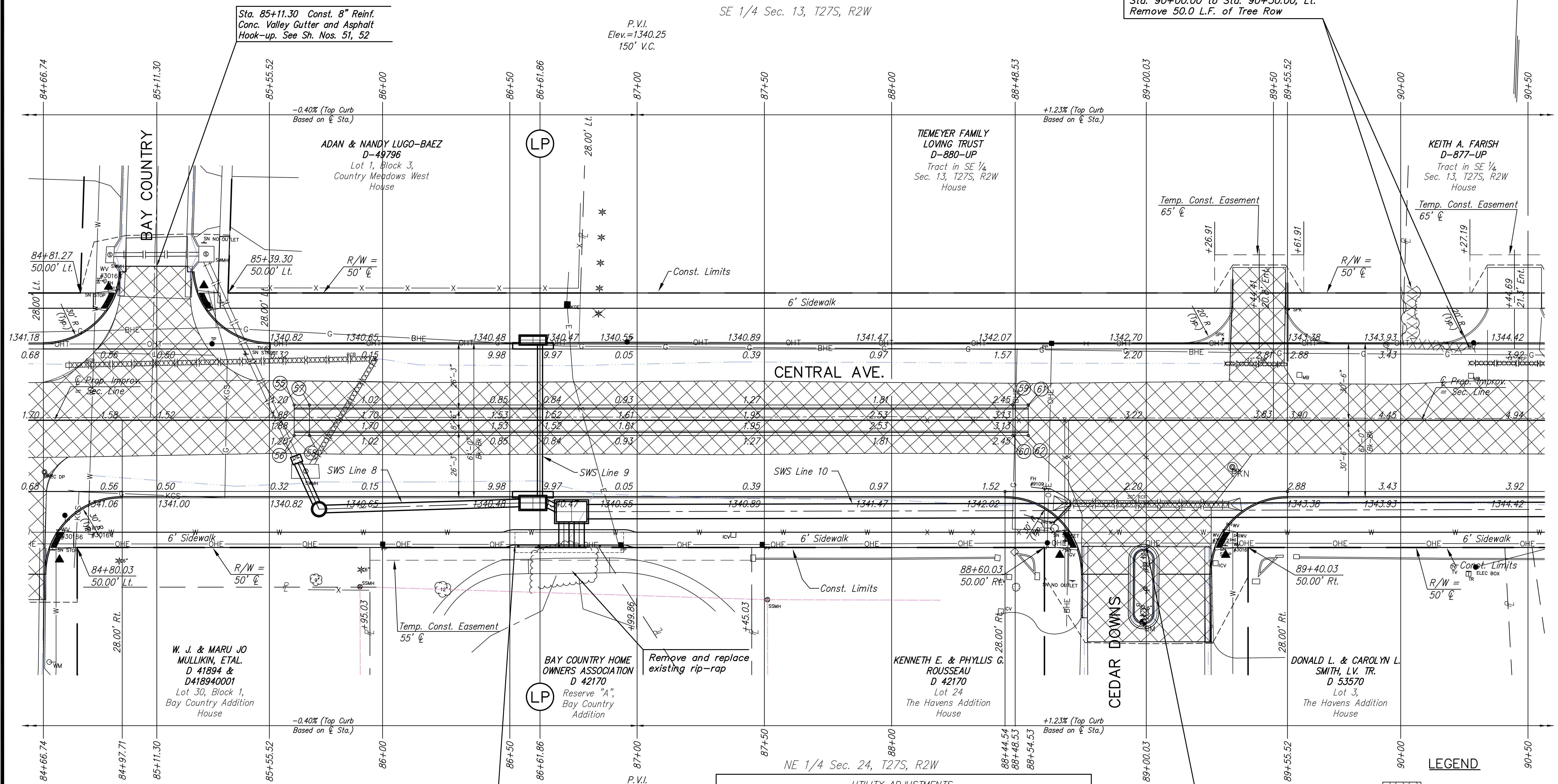
SHEET NO.
13 of 220

Sta. 90+00.00 to Sta. 90+30.00, Lt.
Remove 50.0 L.F. of Tree Row

SE 1/4 Sec. 13, T27S, R2W

CENTRAL AVE.

NE 1/4 Sec. 24, T27S, R2W



MEDIAN LOCATION				
POINT NO.	STATION	OFFSET	ELEVATION	
			FLOWLINE	TOP CURB
55	85+65.27	6.00' Lt.	1341.22	1341.23
56	85+65.27	6.00' Rt.	1341.22	1341.23
57	85+71.27	6.00' Lt.	1341.20	1341.87
58	85+71.27	6.00' Rt.	1341.20	1341.87
59	88+47.67	6.00' Lt.	1342.44	1343.11
60	88+47.67	6.00' Rt.	1342.44	1343.11
61	88+53.67	6.00' Lt.	1342.52	1342.53
62	88+53.67	6.00' Rt.	1342.52	1342.53

Sta. 86+52.02 to Sta. 86+94.68, 49.0' Rt.,
Const. Concrete Headwall and 42.66 L.F. of
Pedestrian Rail. See Sht. No. 49

BM#20 Chiseled square on top of curb at South end of
median island on Cedar Down Circle.
Sta. 88+98.82, 79.38' Rt. Elev.=1345.03

UTILITY ADJUSTMENTS				
STATION	OFFSET	EXISTING ELEVATION	PROPOSED ELEVATION	REMARKS
84+71.72	43.02' Rt.	1341.78	1343.05	Water Valve
84+88.29	42.98' Rt.	1342.53	1341.21	Water Valve
84+88.33	54.82' Lt.	1341.08	1341.67	Water Valve
88+59.99	40.04' Rt.	1342.69	1342.40	Water Valve
88+69.23	51.33' Rt.	1344.12	1343.32	Gas Valve
89+30.54	44.03' Rt.	1343.87	1343.11	Water Valve
89+32.66	40.83' Rt.	1343.71	1343.48	Water Valve
89+34.03	47.00' Rt.	1343.77	1343.40	Water Valve
89+35.62	45.36' Rt.	1343.57	1343.64	Water Valve

Sta. 89+00.03 Const.
8" Reinf. Conc. Valley Gutter
and Side Street Pavement.
See Sh. No. 51, 52

- LEGEND**
- Pavement Removal
 - Brick Pavers
 - Construct Wheelchair Ramp
See Sh. No. 57
 - xxxxxxx SWS Removal
 - Light-Stone Rip-Rap
See Sh. 129
 - Tree Row Removal
See Sh. 86

PLOTTED: Wednesday, November 14, 2012 @ 01:45PM

J:\Civil\04238\Draw\Draw\04238e09.dwg