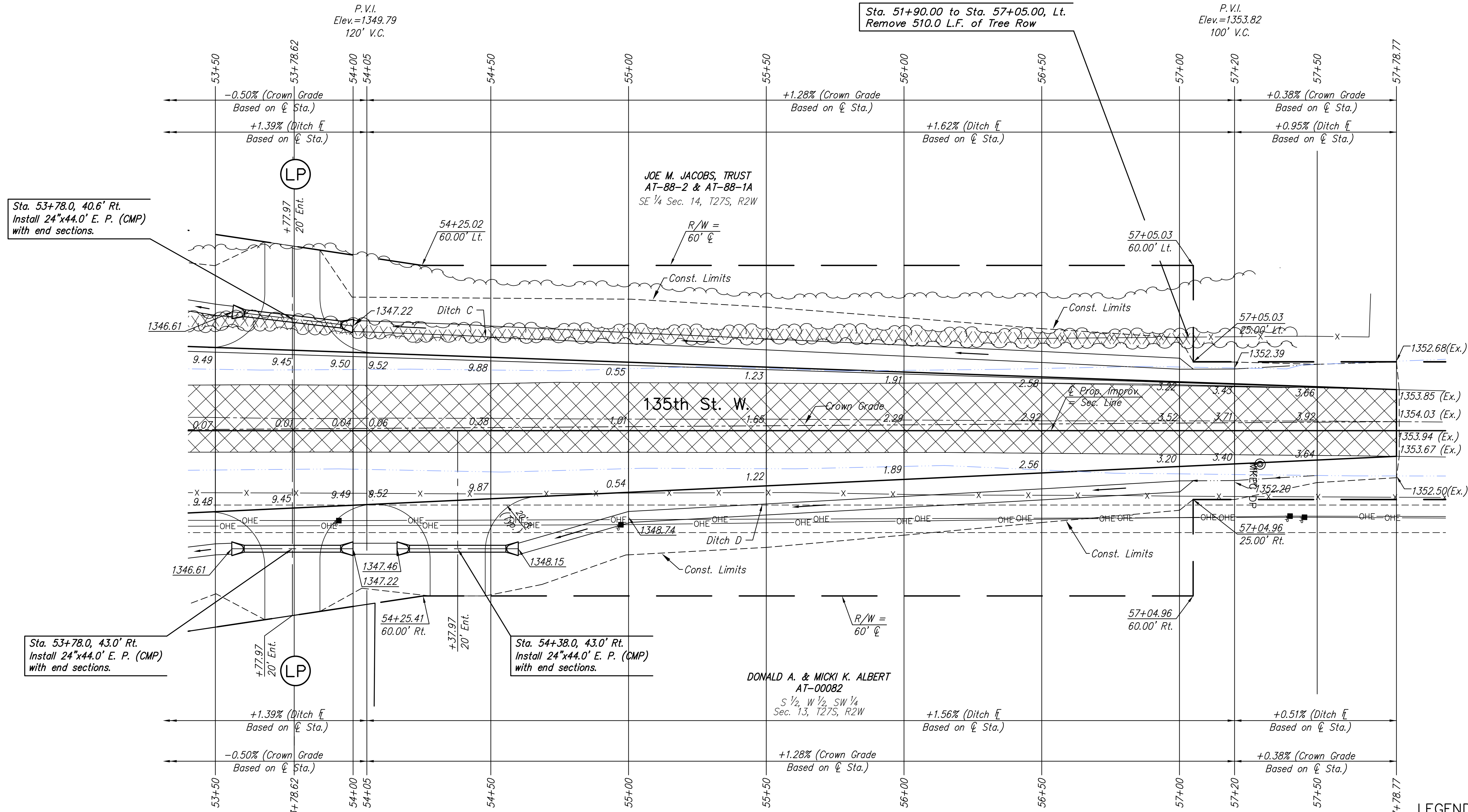


- P.I. Sta. 50+00.00, 0.00' Rt. 135th St. W.
- 3/4" pipe with Sedgwick County cap cast in concrete. N = 1687874.69 E = 1602240.60
 - 3 nails in Northwest face of a high line pole 48.45' NE
 - 3 nails in South face of a fence corner post 21.95' E
 - Chiseled "X" on hub guard of reinforced box culvert 150.00' NNW
 - Chiseled "X" on hub guard of reinforced box culvert 150.00' NNE
 - Mag nail and washer in South face of a power pole 74.03' WNW

- P.I. Sta. 76+32.40, 0.00' Rt. 135th St. W.
- 3/4" pipe with Sedgwick County cap cast in concrete. N = 1690506.64 E = 1602192.01
 - Line of hedge to East 42.15' ENE
 - 60d nail in NW face of a Locust tree 52.00' SE
 - PK nail and vertex of "V" cut in first rib on east end of a CMAC 51.95' SW
 - "V" cut in first rib on West end of a CMAC 39.90' ESE
 - Center of City of Wichita benchmark disc

SE 1/4 Sec. 14, T27S, R2W

Sta. 51+90.00 to Sta. 57+05.00, Lt.
Remove 510.0 L.F. of Tree Row



Sta. 53+78.0, 40.6' Rt.
Install 24"x44.0' E. P. (CMP)
with end sections.

Sta. 53+78.0, 43.0' Rt.
Install 24"x44.0' E. P. (CMP)
with end sections.

Sta. 54+38.0, 43.0' Rt.
Install 24"x44.0' E. P. (CMP)
with end sections.

- Southwest corner Sec. 13, T27S, R2W
Sta. 47+80.62, 0.00' Rt. Central Ave.
- 3/4" pipe with Sedgwick County Cap cast in concrete. N = 1687874.69 E = 1602240.60
 - 3 nails in Northwest face of a high line pole 48.45' NE
 - 3 nails in South face of a fence corner post 21.95' E
 - Chiseled "X" on hub guard of reinforced box culvert 150.00' NNW
 - Chiseled "X" on hub guard of reinforced box culvert 150.00' NNE
 - Mag nail and washer in South face of a power pole 74.03' WNW

- West Quarter Sec. 13, T27S, R2W
Sta. 76+32.40, 0.00' Rt. 135th St. W.
- 3/4" pipe with Sedgwick County cap cast in concrete. N = 1690506.64 E = 1602192.01
 - Line of hedge to East 42.15' ENE
 - 60d nail in NW face of a Locust tree 52.00' SE
 - PK nail and vertex of "V" cut in first rib on east end of a CMAC 51.95' SW
 - "V" cut in first rib on West end of a CMAC 39.90' ESE
 - Center of City of Wichita benchmark disc

BM#12 Chiseled square on center of East headwall of R.C.B. under 135th Street West.
Sta. 51+58.74, 7.46' Rt. Elev.=1343.76

LEGEND

- Pavement Removal
- Brick Pavers
- Construct Wheelchair Ramp See Sh. No. 57
- xxxxxxx SWS Removal
- Light-Stone Rip-Rap See Sh. 129
- Tree Row Removal See Sh. 86

UTILITY ADJUSTMENTS				
STATION	OFFSET	EXISTING ELEVATION	PROPOSED ELEVATION	REMARKS
N/A	N/A	N/A	N/A	

**CENTRAL AVENUE
IMPROVEMENTS FROM
135TH ST. W. TO 19TH ST. W.**

**PAVING PLAN
STA. 53+50
TO
STA. 57+78.77**
SHEET TITLE
472-84017
PROJECT NUMBER

JRA
DESIGN BY
WNU
DRAWN BY
JRA
CHECKED BY

ISSUED
November 9, 2012
REVISED

SHEET NO.
18 of 220

PLOTED: Wednesday, November 14, 2012 @ 01:45PM

L:\Civil\04238.dwg\paw\04238e14.dwg