

A NEW FACILITY FOR: ACADEMY SPORTS + OUTDOORS WICHITA KANSAS

1634 PPW (607853)

N. MAIZE ROAD & W. CENTRAL PARK STREET



STATE LOCATION MAP

AS BUILT PLANS
CONTRACTOR: UTILITIES PLUS
INSPECTOR: RANDY VOTH, C.E.D.
PDF BY: C.C., 9-12-2012

COVER GENERAL NOTES

INFORMATION CONCERNING UNDERGROUND UTILITIES WAS OBTAINED FROM AVAILABLE RECORDS AND EXISTING FIELD CONDITIONS WHEN POSSIBLE. THE CONTRACTOR MUST DETERMINE THE EXACT LOCATION AND ELEVATION OF ALL EXISTING UTILITIES BY HAND DIGGING TEST PITS AT ALL UTILITY CROSSINGS IN ADVANCE OF TRENCHING WITH ANY MECHANICAL DEVICE. CLEARANCES LESS THAN SPECIFIED ON THESE PLANS OR 24" (INCHES), WHICHEVER IS LESS, CONTRACTOR SHALL CONTACT OZARK CIVIL ENGINEERING, INC. @ 479.464.8850 PRIOR TO ANY FURTHER CONSTRUCTION.

CONTRACTOR SHALL BE RESPONSIBLE FOR RELOCATION OR REMOVAL OF EXISTING UNDERGROUND UTILITIES SHOWN OR NOT SHOWN AT NO ADDITIONAL COST TO THE OWNER.

CONTRACTOR SHALL INCLUDE IN CONTRACT THE PRICE FOR THE REMOVAL AND DISPOSAL OF ANY EXCESS TOPSOIL HE DETERMINES IS NOT NEEDED TO ESTABLISH THE FINAL GRADES AND LANDSCAPING.

CONTRACTOR SHALL BE RESPONSIBLE FOR THE DESIGN AND USE OF ANY AND ALL REQUIRED OR NECESSARY SHORING, SHEETING, BRACING AND SPECIAL EXCAVATION MEASURES REQUIRED ON THIS PROJECT THAT WILL MEET OR EXCEED OSHA, FEDERAL, STATE AND LOCAL REGULATIONS DURING CONSTRUCTION. OZARK CIVIL ENGINEERING, INC. AND THE DEVELOPER/OWNER ACCEPTS NO RESPONSIBILITY FOR THE CONTRACTORS FAILURE TO COMPLY WITH THESE REGULATIONS.

ALL UTILITIES, INCLUDING STORM SEWER, SHOWN WITHIN PUBLIC EASEMENTS OR RIGHT OF WAYS SHALL BE CONSTRUCTED TO THE GOVERNING AGENCY'S SPECIFICATIONS. ALL OTHER UTILITIES SHALL BE CONSTRUCTED TO THE CLIENT'S OR THE GOVERNING AGENCY'S SPECIFICATIONS, WHICHEVER IS MORE STRINGENT. IF THERE IS A QUESTION AS TO WHICH SPECIFICATIONS SHOULD APPLY THE CONTRACTOR SHALL CONTACT THE ENGINEER OF RECORD.

IT IS THE RESPONSIBILITY OF THE CONTRACTOR TO FOLLOW ALL RECOMMENDATIONS SET FORTH IN THE GEOTECHNICAL STUDY, WHERE A CONFLICT EXISTS BETWEEN THE HIGHWAY DEPARTMENT / CITY STANDARDS, OR THE GEOTECH STUDY, THE MOST STRINGENT SHALL APPLY.

FURTHERMORE IT IS THE RESPONSIBILITY OF THE CONTRACTOR TO MAINTAIN THE EROSION CONTROL MEASURES AS SHOWN ON THESE PLANS. CONTRACTOR SHALL KEEP THESE MAINTAINED THROUGHOUT ALL PHASES OF CONSTRUCTION. CONTRACTOR SHALL ALSO BE RESPONSIBLE FOR IMPLEMENTING THE SWPPP.

ALL PHASES OF CONSTRUCTION SHALL MEET OR EXCEED THE OWNER / DEVELOPER SITE WORK SPECIFICATIONS.

SEE ARCHITECTURAL PLANS FOR THE EXACT DIMENSIONS AND LOCATIONS OF ANY RAMPS, VESTIBULE, PORCHES, SLOPED PAVING, BUILDING UTILITY ENTRANCE LOCATIONS, TRUCK DOCKS OR WELLS, AND PRECISE BUILDING DIMENSIONS.

CONTRACTOR SHALL REMOVE AND DISPOSE OF ALL DEBRIS, RUBBISH AND OTHER MATERIALS RESULTING FROM PREVIOUS AND CURRENT DEMOLITION PROCEDURES. DISPOSAL SHALL BE IN ACCORDANCE WITH ALL LOCAL, STATE AND/OR FEDERAL REGULATIONS GOVERNING SUCH OPERATIONS.

THE TOPOGRAPHIC AND BOUNDARY SURVEY, INCLUDING BUT NOT LIMITED TO PROPERTY LINES, LEGAL DESCRIPTIONS, EXISTING UTILITIES, SITE TOPOGRAPHY INCLUDING SPOT ELEVATIONS, EXISTING STRUCTURAL LOCATIONS AND OUTSTANDING PHYSICAL FEATURES HAS BEEN PROVIDED BY THE FOLLOWING COMPANY:

OZARK CIVIL ENGINEERING INC.
RICK DAYTON
1008 N.W. 7TH ST. STE. "C"
BENTONVILLE, AR 72712
(479) 464-8850 (V)

IT IS THE RESPONSIBILITY OF THE CONTRACTOR TO FIELD VERIFY ALL EXISTING FEATURES AS SHOWN ON THE SURVEY AND NOTIFY THE SURVEYOR AND THE ENGINEER OF RECORD OF ANY INACCURACIES FOUND ON THE SURVEY PRIOR TO BEGINNING CONSTRUCTION.

THE GENERAL CONTRACTOR SHALL BE HELD SOLELY RESPONSIBLE FOR AND SHALL TAKE ALL PRECAUTIONS NECESSARY TO AVOID PROPERTY DAMAGE TO ADJACENT PROPERTIES DURING THE CONSTRUCTION PHASES OF THIS PROJECT.

ALL CONSTRUCTION IN THE STATE RIGHT-OF-WAY SHALL BE COORDINATED WITH THE HIGHWAY DEPARTMENT.

THE CONTRACTOR SHALL BE SOLELY AND COMPLETELY RESPONSIBLE FOR CONDITIONS OF THE JOB SITE, INCLUDING SAFETY OF ALL PERSONS AND PROPERTY DURING ALL PHASES OF CONSTRUCTION OF THIS SITE. THIS REQUIREMENT SHALL APPLY CONTINUOUSLY AND SHALL NOT BE LIMITED TO CONSTRUCTION WORKING HOURS.

WARRANTY / DISCLAIMER
THE DESIGNS REPRESENTED IN THESE PLANS ARE IN ACCORDANCE WITH ESTABLISHED PRACTICES OF CIVIL ENGINEERING FOR DESIGN FUNCTION AND USE INTENDED BY THE OWNER AT THIS TIME. HOWEVER, NEITHER THE ENGINEER NOR HIS PERSONNEL CAN OR DO WARRANT THESE DESIGNS OR PLANS AS CONSTRUCTED EXCEPT IN THE SPECIFIC CASES WHERE THE ENGINEER INSPECTS AND CONTROLS THE PHYSICAL CONSTRUCTION AT THE SITE.

CONTACT LIST

ENGINEER
OZARK CIVIL ENGINEERING, INC.
13200 METCALF AVE., SUITE 260
OVERLAND PARK, KS 66213(913)
(973) 310-0470 (V)
SMCGEE@OZARKCIVIL.COM

CLIENT
ACADEMY SPORTS + OUTDOORS
1800 N MASON
KARY, TX 77449

DEVELOPMENT MANAGER
MELONY GAY
(281) 944-6214 (V)

CONSTRUCTION MANAGER
JASON AVERETT
(281) 646-5194 (V)
(281) 299-6541 (F)

DEVELOPER / SELLER
EAST SIDE INVESTMENTS LLC.
c/o CHRISTIAN ABLAH
8200 E. 32ND ST. STE. 150
WICHITA, KS 67226
(316) 634-2600 (V)
(316) 393-3456 (F)

ARCHITECT
SEEBERGER ARCHITECTURE
BRYAN CATER
255 CENTRAL PARKWAY
HOUSTON, TX 77092
(731) 977-5400 (V)

LOWE'S HOME CENTERS
CHARLES STURDIVANT
1605 CURTIS BRIDGE ROAD
WILKESBORO, NC 28697
(336) 658-4822
charles.w.sturdivant@lowes.com

CITY OF WICHITA, KS
455 N. MAIN
WICHITA KS 67202-1688
(316) 268-4421 (V)
(316) 268-4390 (F)

CITY PLANNING DEPT.
SENIOR PLANNER
JESS McNEELY
(316) 352-4864 (V)
JMCNEELY@WICHITA.GOV

CENTRAL INSPECTIONS
RICHARD CHAMBERLIN
(316) 268-4477 (V)
RCHAMBERLIN@WICHITA.GOV

WATER AND SEWER
JULIANNE KALLMAN
(316) 268-4236 (V)
JKALLMAN@WICHITA.GOV

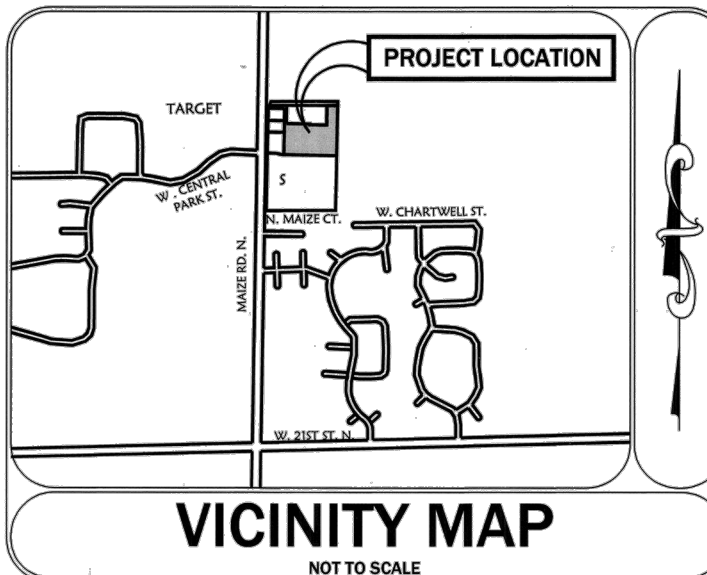
STORM WATER MANAGEMENT
SCOTT LINDEBAK
(316) 268-4545 (V)
SLINDEBAK@WICHITA.GOV

GAS
BLACK HILLS ENERGY
DARYL KELLER
2330 N HOOVER
WICHITA, KS 67205
(575) 236-6502 ext.88464 (V)

TELEPHONE
AT&T
CHRISTOPHER DIEKER
154 N. BROADWAY, ROOM 210
WICHITA, KS 67202
(316) 268-3180 (V)

ELECTRIC
WESTAR ENERGY
MARSHA JESSE
1900 E. CENTRAL
WICHITA, KS 67201
(316) 261-6315 (V)

GEOTECH & ENVIRONMENTAL
SCHNABEL ENGINEERING
RICH WARGO - GEOTECH
APRIL ROGERS - ENVIRONMENTAL
104 CORPORATE BLVD, SUITE 240
WEST COLUMBIA, SC 29169
(803) 796-6250 (V)



VICINITY MAP

NOT TO SCALE

DRAWING INDEX

		DATE	DESCRIPTION
1.0	COVER SHEET	03/08/2012	PPW PLANS
2.0	SITE PLAN	03/08/2012	PPW PLANS
3.0	SURVEY	01/31/2012	PPW PLANS
6.0	UTILITY PLAN	03/08/2012	PPW PLANS
6.1	WATERLINE "A" PLAN AND PROFILE	03/08/2012	PPW PLANS
6.2	WATERLINE "A" PLAN AND PROFILE	03/08/2012	PPW PLANS
6.3	WATERLINE "B" PLAN AND PROFILE	03/08/2012	PPW PLANS
6.4	UTILITY DETAIL SHEET	03/08/2012	PPW PLANS
6.7	CITY OF WICHITA (STANDARD WATER ASSEMBLY DETAIL)	03/08/2012	PPW PLANS
6.8	CITY OF WICHITA (STANDARD WATER SERVICE DETAIL)	03/08/2012	PPW PLANS
6.9	CITY OF WICHITA (STANDARD VAULT & METER ASSEMBLIES)	03/08/2012	PPW PLANS
6.10	CITY OF WICHITA (MISCELLANEOUS WATER DETAILS)	03/08/2012	PPW PLANS

APPROVED AS NOTED BY CITY ENGINEER OF WICHITA

PUBLIC WORKS *Julianne Kallman 3-9-12*
WATER *Shag Holley 3-12-12*
SEWER
FIRE *Randy Voth 3-13-2012*

NOTE TO CONTRACTORS:

INSTALLATION, INSPECTION AND TESTING FOR THIS PROJECT IS TO BE PROVIDED BY A LICENSED CONSULTING ENGINEERING FIRM UNDER CONTRACT WITH THE OWNER/DEVELOPER. SAID INSPECTION TO BE IN ACCORDANCE WITH THE CITY OF WICHITA STANDARD CONSTRUCTION ENGINEERING PRACTICES AND CERTIFIED BY A LICENSED PROFESSIONAL ENGINEER. NO WORK SHALL BE PERFORMED IN DEDICATED EASEMENTS OR PUBLIC RIGHT-OF-WAY BY THE CONTRACTOR WITHOUT SUCH INSPECTION NOR SHALL ANY WORK BE COMMENCED WITHOUT WRITTEN AUTHORIZATION BY THE CITY ENGINEER. ALL CONSTRUCTION AND MATERIALS SHALL COMPLY WITH THE CITY OF WICHITA SPECIFICATIONS AND STANDARDS (ON FILE AND AVAILABLE IN THE CITY ENGINEER'S OFFICE).

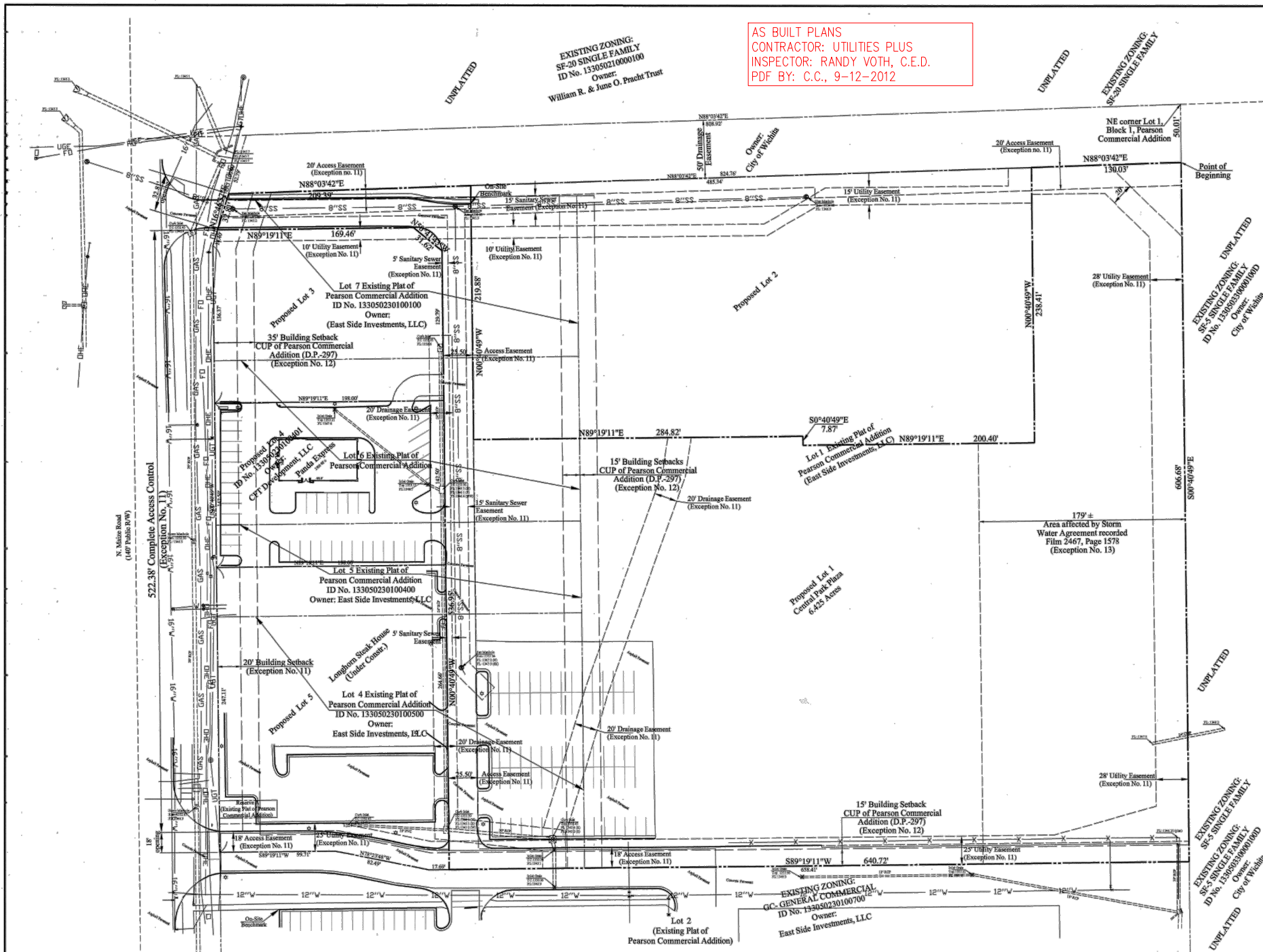
COVER SHEET

A NEW FACILITY FOR:
ACADEMY SPORTS + OUTDOORS

N. MAIZE ROAD & W. CENTRAL PARK STREET WICHITA KANSAS

DRAWN BY: JON
APPY BY: SM
DWG. NAME: 10-1003 Project C&E
DATE: 01/31/2012
JOB NO: 10-1003
SHEET NO:

1.0

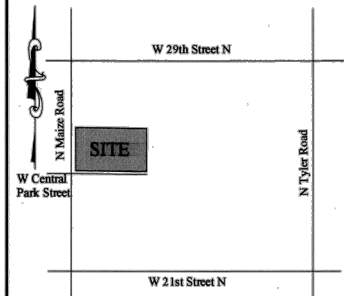


AS BUILT PLANS
 CONTRACTOR: UTILITIES PLUS
 INSPECTOR: RANDY VOTH, C.E.D.
 PDF BY: C.C., 9-12-2012

LEGEND

- FOUND BOUNDARY MONUMENT AS NOTED
- SET BOUNDARY MONUMENT AS NOTED
- ⊙ POWER POLE W/GUY
- ⊙ SANITARY MANHOLE
- ⊙ LIGHT POLE
- ⊙ SIGN
- ⊙ WATER METER
- ⊙ WATER VALVE
- ⊙ FIRE HYDRANT
- ⊙ GRATE INLET
- ⊙ GAS METER
- ⊙ ELECTRIC TRANSFORMER
- PROPERTY LINE
- SS — SANITARY SEWER
- T — TELEPHONE LINE
- OHT — OVERHEAD TELEPHONE
- GAS — GAS LINE
- W — WATER LINE
- OHE — OVERHEAD ELECTRIC LINE
- UGE — UNDERGROUND ELECTRIC
- FENCE
- ⊙ MONITORING WELL
- STREET CENTERLINE
- (M) MEASURED DISTANCE
- (D) DEED OR DESCRIBED DISTANCE
- (P) FLAT DISTANCE

BASIS OF BEARINGS & VERTICAL:
 KANSAS STATE PLANE GRID, SOUTH ZONE, NAD 83
 CONTROL STATION - FLOOD
 1,702,140.88 (N) 1,655,855.87 (E) (US SURVEY FEET) (GRID)
 ELEVATION: 1340.95 (NAVD 88)
 DATE OF ADJUSTMENT: OCTOBER 1998
 GRID FACTOR: 0.9998811 (AT SITE)



VICINITY MAP NOT TO SCALE
 LAT: 37°43'58" N
 LONG: 97°27'39" W

NOTES:
FIRM NOTE:
 By graphic scaling only this property is located within Flood Zone "A" (Areas with a 1% chance of flooding and a 26% chance of flooding over the life of a 30-year mortgage. Because detailed analyses are not performed for such areas, no depths or base flood elevations are shown within these zones.) as determined from the National Flood Insurance Program, Flood Insurance Rate Map, Map No. 20173C030E, Effective Date: February 2, 2007.

UTILITY NOTE:
 This survey reflects above ground indications of utilities and information available from utility companies. The surveyor makes no guarantee that the underground utilities shown comprise all such utilities in the area, either in service or abandoned. The surveyor further does not warrant that the underground utilities shown are in the exact location indicated, although he does certify that they are located as accurately as possible from information available. The surveyor has not physically located the underground utilities.

ZONING NOTE:
 Kansas One Call Ticket No. 11368090
 The present zoning for this site was not provided to the surveyor by the title company as required by the 2011 Minimum Standard Detail Requirements for ALTA/ACSM Land Title Surveys. Any zoning information shown was obtained from City maps or verbally from City representatives. The surveyor does not warrant this information as complete or correct.
NOTE: The topographic information shown on this survey reflects the conditions at the time of the field survey (October 6, 2011). There has been ongoing construction and earthwork since that date.

ON-SITE BENCHMARK No. 1: Top of curb at end approximately 7 feet east end of retaining wall at north line of property.
ELEVATION: 1356.23
ON-SITE BENCHMARK No. 2: Square cut top of curb at NW corner Lowe's parking lot.
ELEVATION: 1353.41

GENERAL NOTES:
 SURVEY IS VALID ONLY IF PRINT HAS ORIGINAL SEAL AND SIGNATURE OF SURVEYOR PRESENT.
 THIS SURVEY MEETS CURRENT "MINIMUM STANDARDS FOR BOUNDARY SURVEYS" IN THE STATE OF KANSAS.
 SUBSURFACE AND ENVIRONMENTAL CONDITIONS WERE NOT EXAMINED OR CONSIDERED AS A PART OF THIS SURVEY.

**CITY OF WICHITA
 SEDGWICK COUNTY
 KANSAS**

**ALTA/ACSM LAND
 TITLE SURVEY**

DATE OF LAST REVISION:
 1-10-12 Updated title commitment

DATE OF FIELD SURVEY - OCTOBER 5-6, 2011
 SCALE: 1"=40'
 DRAWN BY: RDM DATE: 12-15-11
 FIELD CREW: INDIAN CREEK DRAWING NO. 1110261
 CHECKED BY: RLD SHEET 1 OF 1

FIRST AMERICAN TITLE INSURANCE COMPANY		
COMMITMENT NO. 2040158 (Revision A)		EFFECTIVE DATE: December 23, 2011 at 7:30 A.M.
SCHEDULE B - SECTION II (EXCEPTIONS)		
ITEM #	ITEM DESCRIPTION	EFFECT
1.	Rights or claims of parties in possession not shown by the Public Records.	Not surveyed related
2.	Easements, or claims of easements, not shown by the Public Records.	None known
3.	Any encumbrance, encumbrance, violation, or adverse circumstances affecting Title that would be disclosed by an accurate and complete survey of the Land or that could be ascertained by an inspection of the Land.	None known
4.	Any lien, or right to a lien, for services, labor or material heretofore or hereafter furnished, imposed by law and not shown by the Public Records.	Not surveyed related
5.	Taxes, or special assessments, if any, not shown as existing liens by the Public Records.	Not surveyed related
6.	Loss or damage by reason of there being recorded in the Public Records, any deeds, mortgages, in pending, liens or other title encumbrances subsequent to the commitment date and prior to the effective date of the final plat.	Not surveyed related
7-10.	General taxes and special assessments for the fiscal year 2011. The following matters shown or disclosed by the filed or recorded map of Central Park Plaza: 20' building setback line over the west line; access central over a portion of Maize Road; 20' access easement across the north; 15' sanitary sewer easement across the north and west; 5' sanitary sewer easement across the west; 10' utility easement across the north; 25' access easement across the west; 20' drainage easement across the west and middle; 25' utility easement on the south; 25' utility easement across the east; utility easements located in the southeast corner and southeast corner. Said plat also contains the following: a. A drainage plan has been developed for the described property and all drainage easements, rights of way, or reserves shall remain at established grades or as modified with the approvals of the City Engineer, and unobstructed to allow for the conveyance of storm water. b. Pursuant to the Community Unit Plan, the "Sign Easement" shown as part of Lot 5 is for shared signage. This easement shall be maintained by the owner of Lot 1. c. Central Park Plaza is subject to the conditions of the Pearson Commercial Addition Community Unit Plan (CUP 2006-0016, DP-297) d. The Base Flood Elevation for this property has been determined to be 1350.8 (NAVD 88). All lots in this subdivision shall have a minimum finished floor elevation of 1351.4 (NAVD 88).	As shown hereon
11.	Building setback lines established by the recorded plat of said subdivision by the unrecorded Pearson Commercial Community Unit Plan DP Number 297.	As shown hereon
12.	The terms and provisions contained in the document entitled "Storm Water Agreement" recorded on Film 2467, Page 1578 of Official Records.	See Note No. 1
13.	The terms and provisions contained in the document entitled "Notice of Community Unit Plan" recorded as DOC #FLM-PG: 2881139 of Official Records.	Not surveyed related
14.	Covenants and Restrictions contained in DOC #FLM-PG: 2881141 and DOC #FLM-PG: 2881142.	See Note No. 2
15.	The terms and provisions contained in the document entitled "Storm Water Easement Agreement" filed as DOC #FLM-PG: 2897079.	See Note No. 3
16.	The terms and provisions contained in the document entitled "Easements, Covenants, Conditions and Restrictions" filed as DOC #FLM-PG: 2897071.	See Note No. 6
17.	Deleted. (Formerly - The terms and provisions contained in the document entitled "Dedication of Storm Sewer Easement" filed as DOC #FLM-PG: 2898393.)	
18.	Deleted. (Formerly - The terms and provisions contained in the document entitled "Dedication of Sanitary Sewer Easement" filed as DOC #FLM-PG: 2898362.)	
19.	Deleted. (Formerly - The terms and provisions contained in the document entitled "Dedication of Water Line Easement" filed as DOC #FLM-PG: 2898362.)	
20.	Deleted. (Formerly - The terms and provisions contained in the document entitled "Dedication of Water Line Easement" filed as DOC #FLM-PG: 2898362.)	
21.	Deleted. (Formerly - The terms and provisions contained in the document entitled "Dedication of Water Line Easement" filed as DOC #FLM-PG: 2898362.)	
22.	Terms and provisions of the Findings and Orders of the Division of Water Resources, Kansas Department of Agriculture regarding water rights, as disclosed by the instrument filed on DOC #FLM-PG: 29091333.	Not surveyed related
23.	Covenants and restrictions contained in Doc #FLM-PG: 29197388.	Not surveyed related
24.	The terms and provisions contained in the document entitled "Access Easement" filed as Doc #FLM-PG: 29197389.	See Note No. 5
25.	Deleted. (Formerly - An easement for drainage recorded in Doc #FLM-PG: 2928115.)	
26.	Deleted. (Formerly - An easement for sanitary sewer recorded in Doc #FLM-PG: 29223594.)	
27.	Deleted. (Formerly - An easement for access recorded in Doc #FLM-PG: 29235029.)	
28.	Subject property may become subject to special assessments for various capital improvements as evidenced by numerous governmental filings of notice in the form of a certificate filed on DOC #FLM-PG: 2888140 and resolutions filed on DOC #FLM-PG: 2888576; DOC #FLM-PG: 2888576; DOC #FLM-PG: 2894148; DOC #FLM-PG: 29017301; DOC #FLM-PG: 29104415; DOC #FLM-PG: 29159454 and DOC #FLM-PG: 29163058.	Not surveyed related
29.	Terms and provisions of a restriction contained in a Lease or Notice of Lease dated April 11, 2011 executed by East Side Investments, L.L.C. as lessor, and RARE Hospitality of Kansas, Inc., as lessee, recorded August 1, 2011 as Doc #FLM-PG: 29232074.	Not surveyed related
30.	Rights of parties in possession under unrecorded leases.	Not surveyed related
31.	Covenants and restrictions contained in Doc #FLM-PG: 29256764.	See Note No. 7
32.	The following matters disclosed by a survey made by Clark Civil Engineering, Inc. on October 5-6, 2011, designated Job No. S110261: a. To be determined.	Not surveyed related
33.	The following exception will be used when the special assessments are spread: Special taxes and assessments now assessed or levied, but payable in future installments, to-wit:	Not surveyed related

Parcel 1:
 Lot 1, Block 1, Central Park Plaza, an addition to the City of Wichita, Sedgewick County, Kansas.
 NOTE: The above addition has not yet been filed. We will issue an updated commitment upon the filing of Central Park Plaza.

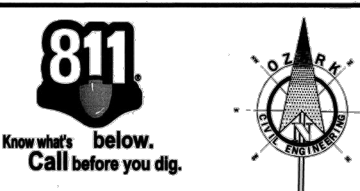
Parcel 2:
 A non-exclusive easement for the benefit of Parcel 1 as created by the instrument filed on DOC #FLM-PG: 28970711 and as amended on DOC #FLM-PG: 29257742 for ingress and egress over and across the following described property:
 Lots 1, 2, 3, 4, 5, 6, 7, Block 1 and Reserves A and B, Pearson Commercial Addition to the City of Wichita, Sedgewick County, Kansas, except that part platted as Central Park Plaza, an addition to the City of Wichita, Sedgewick County, Kansas; TOGETHER WITH Lots 1, 2, 3, 4 and 5, Block 1, Central Park Plaza, an addition to the City of Wichita, Sedgewick County, Kansas.

Parcel 3:
 A non-exclusive easement for the benefit of Parcel 1 as created by the instrument filed on DOC #FLM-PG: _____ for _____ over and across the following described property:
 To be determined.

PARCEL 1 ALSO DESCRIBED AS:
 Part of Lots 1, 4, 5, 6 and 7, Block 1, Pearson Commercial Addition to the City of Wichita, Sedgewick County, Kansas according to the plat recorded as Doc. No. 28910462, and further described as follows:
 Commencing at the Northeast corner of said Lot 1; thence South 0°40'49" East, 50.01 feet along the East line of said Lot 1 to a point on the South line of a platted 50 foot drainage easement said point being the point of beginning; thence continuing South 0°40'49" East, 606.68 feet along the East line of said Lot 1 to the Southeast corner thereof; thence South 89°19'11" West, 640.72 feet along the South line of said Lot 1 and 4; thence North 0°40'49" West, 536.95 feet; thence North 59°41'43" West, 31.62 feet; thence South 89°19'11" West, 169.46 to a point on the West line of said Lot 7; thence North 16°46'37" East, 32.81 feet along the West line of said Lot 7 and 1 to a point on the South line of said 50 foot drainage easement; thence North 88°03'42" East, 209.39 feet along said South line; thence South 0°40'49" East, 219.88 feet; thence North 89°19'11" East, 284.82 feet; thence North 88°03'42" East, 7.87 feet; thence North 89°19'11" East, 200.40 feet; thence North 0°40'49" West, 238.41 feet to a point on the South line of said 50 foot drainage easement; thence North 88°03'42" East, 130.03 feet along said South line to the point of beginning.
 Contains 6.425 Acres of land, more or less.

To: Academy, LTD, a Texas limited partnership and First American Title Insurance Company:
 This is to certify that this map or plat and the survey on which it is based were made in accordance with the 2011 Minimum Standard Detail Requirements for ALTA/ACSM Land Title Surveys, jointly established and adopted by ALTA and NSPS, and includes Items 1-9, 11, 13, 14 and 16 of Table A thereto.
 The field work was completed on October 6, 2011.

Richard L. Dayton
 RICHARD L. DAYTON, KS LS-972 DATE 1-31-12



UTILITY PROPOSED FEATURES

---	BOUNDARY LINE
---	RIGHT OF WAY LINE
---	EASEMENT LINE
---	CONCRETE CURB AND GUTTER
---	FENCE
---	GUARD RAIL
---	RETAINING WALL
---	STORM DRAIN (SEE GRADING PLAN FOR SIZE)
---	SANITARY SEWER SERVICE
---	WATER SERVICE
---	UNDERGROUND ELECTRIC SERVICE
---	UNDERGROUND TELEPHONE SERVICE
---	OVERHEAD ELECTRIC SERVICE
---	OVERHEAD TELEPHONE SERVICE
---	FIBER OPTIC CABLE SERVICE
---	GAS SERVICE
---	DRAINAGE STRUCTURES (SEE GRADING PLAN FOR TYPE)
---	SANITARY SEWER MANHOLE
---	FIRE HYDRANT WITH GUARD POSTS
---	UTILITY POLE
---	WATER LINE TEE, BEND, VALVE AND PLUG

UTILITY GENERAL NOTES

ALL WATER LINES SHALL HAVE A MINIMUM OF 3'-0" COVER ABOVE TOP OF PIPE.

ALL SANITARY SEWER LINES SHALL HAVE A MINIMUM COVER OF 3'-0" COVER ABOVE TOP OF PIPE.

PROPOSED UTILITIES TO BE BURIED IN THE SAME TRENCH INSTALLATION SHALL BE COORDINATED AND APPROVED BY LOCAL UTILITY COMPANIES.

VERIFY LOCATION AND DEPTH OF EXISTING UTILITIES BEFORE CONSTRUCTING PROPOSED UTILITY.

CONTRACTOR SHALL COORDINATE ANY DISRUPTION TO EXISTING UTILITY SERVICES WITH ADJACENT PROPERTY OWNERS.

ALL ELECTRIC, TELEPHONE AND GAS EXTENSIONS INCLUDING SERVICE LINES SHALL BE CONTRACTED TO THE APPROPRIATE UTILITY COMPANY PRIOR TO CONSTRUCTION. ALL UTILITY DISCONNECTIONS SHALL BE COORDINATED WITH THE DESIGNATED UTILITY COMPANIES.

CONSTRUCTION SHALL NOT START ON ANY PUBLIC UTILITY SYSTEM UNTIL WRITTEN APPROVAL HAS BEEN RECEIVED BY THE ENGINEER FROM THE APPROPRIATE GOVERNING AGENCY AND CONTRACTOR HAS BEEN NOTIFIED BY THE ENGINEER.

THE MINIMUM HORIZONTAL SEPARATION BETWEEN THE CLOSEST TWO POINTS OF THE WATER AND SEWER LINE IS TEN FEET. THE MINIMUM VERTICAL SEPARATION BETWEEN THE CLOSEST TWO POINTS OF THE WATER AND SEWER LINE IS TWENTY FOUR (24) INCHES.

PRIOR TO THE CONSTRUCTION OF OR CONNECTION TO ANY STORM DRAIN, SANITARY SEWER, WATER MAIN OR ANY OF THE OTHER UTILITIES, THE CONTRACTOR SHALL EXCAVATE, VERIFY AND ACCURATELY ALL POINTS OF CONNECTION AND ALL UTILITY CROSSINGS AND INFORM OZARK CIVIL ENGINEERING AND THE OWNERS/ENGINEER OF ANY CONTACT OR REQUIRED DEVIATION FROM THE PLAN. NOTIFICATION SHALL BE MADE A MINIMUM OF 48 HOURS PRIOR TO CONSTRUCTION. OZARK CIVIL ENGINEERING AND ITS CLIENTS SHALL BE HELD HARMLESS IN THE EVENT THAT THE CONTRACTOR FAILS TO MAKE SUCH NOTIFICATION.

ALL WATER LINE FITTINGS SHALL BE INSTALLED WITH THROAT BLOCKING IN ACCORDANCE WITH THE CITY UTILITY DEPARTMENT STANDARDS (REFER TO DETAIL SHEETS).

ALL WATER AND SEWER LINE BEDDING SHALL BE INSTALLED IN ACCORDANCE WITH THE CITY UTILITY DEPARTMENT STANDARDS (REFER TO DETAIL SHEETS).

CONTRACTOR SHALL BE RESPONSIBLE FOR NOTIFYING THE CITY CONSTRUCTION DIVISION TO SOBARRA A PRE-CONSTRUCTION MEETING AT LEAST 48 HOURS PRIOR TO STARTING ANY WORK ON THIS PROJECT. CONTRACTOR SHALL OBTAIN ALL NECESSARY PERMITS.

EXISTING UTILITIES ADJACENT OR ALONG THE LINE OF THE PROPOSED WORK ARE SHOWN ONLY IN AN APPROXIMATE LOCATION ON THESE PLANS. CONTRACTOR SHALL CALL THE STATE ONE-CALL SYSTEM OR DESIGNATED UTILITY COMPANY PRIOR TO CONSTRUCTION. CONTRACTOR SHALL OBTAIN HIS OWN INITIATIVE AND AT NO ADDITIONAL COST, LOCATE ALL UNDERGROUND LINES AND STRUCTURES AS NECESSARY. CONTRACTOR SHALL BE RESPONSIBLE FOR ANY DAMAGE TO UNDERGROUND LINES OR STRUCTURES.

FIRE HYDRANT ASSEMBLIES SHALL BE INSTALLED IN ACCORDANCE WITH THE CITY UTILITY DEPARTMENT STANDARDS (REFER TO DETAIL SHEETS).

CONTRACTOR SHALL NOT TAP OR OTHERWISE PENETRATE EXISTING WATER AND SEWER MAIN LINES WITHOUT PRIOR APPROVAL FROM THE CITY INSPECTOR. CONTRACTOR IS RESPONSIBLE FOR AVOIDING SPRING OF RAW SEWAGE. CONTRACTOR SHALL PROVIDE ALL OTHER MISSING AND MISSING EQUIPMENT NECESSARY TO AVOID SPILLAGE. CONTRACTOR SHALL NOT OPERATE VALVES ON EXISTING WATER MAINS.

THE EXISTING UTILITIES AND OBSTRUCTIONS SHOWN ARE FROM THE BEST AVAILABLE RECORD AND SHALL BE VERIFIED BY THE CONTRACTOR TO HIS SATISFACTION PRIOR TO CONSTRUCTION. NECESSARY REVISIONS SHALL BE TAKEN BY THE CONTRACTOR TO PROTECT EXISTING SERVICES AND MAINS, AND ANY DAMAGE TO THEM SHALL BE REPAIRED IMMEDIATELY AT THE CONTRACTOR'S EXPENSE.

IT SHALL BE DISTINCTLY UNDERSTOOD THAT FAILURE TO SPECIFICALLY MENTION WORK WHICH IS REQUIRED TO COMPLETE THE PROJECT SHALL NOT RELIEVE THE CONTRACTOR OF HIS RESPONSIBILITY TO PERFORM SUCH WORK.

CONTRACTOR SHALL MATCH TOP OF PROPOSED SANITARY SEWER MANHOLE TO PROPOSED GRADE. IF A DISCREPANCY OCCURS BETWEEN PROPOSED GRADE AND PROPOSED STRUCTURE TOP, THE GRADE SHALL GOVERN. IF THE DISCREPANCY IS MORE THAN 4 INCHES THE CONTRACTOR SHALL CONTACT THE ENGINEER OF RECORD.

ALL UTILITIES INCLUDING STORM SEWER, SHOWN WITHIN PUBLIC EASEMENTS OR RIGHT OF WAY SHALL BE CONTRACTED TO THE GOVERNING AGENCY'S SPECIFICATIONS. ALL OTHER UTILITIES SHALL BE CONTRACTED TO THE CITY OR THE GOVERNING AGENCY'S SPECIFICATIONS, WHICHEVER IS MORE STRINGENT. IF THERE IS A QUESTION AS TO WHICH SPECIFICATIONS SHOULD APPLY THE CONTRACTOR SHALL CONTACT THE ENGINEER OF RECORD.

IF SANITARY SEWER MANHOLE IS LOCATED IN A GAS AREA OR SOPE, CONTRACTOR SHALL CONTACT MANHOLE TOP TO AN ELEVATION 6 INCHES HIGHER THAN THE PROPOSED GRADE. IF THIS CANNOT BE ACHIEVED THEN CONTRACTOR SHALL USE A WATER TIGHT MANHOLE COVER THAT MEETS OR EXCEEDS THE OWNER/DEVELOPER'S STANDARD SPECIFICATIONS.

ALL WATER MAINS SHALL BE HYDROSTATICALLY TESTED AND DISINTEGRATED BEFORE ACCEPTANCE. SEE SITE WORK SPECIFICATIONS.

CONTRACTOR SHALL COORDINATE WITH UTILITY COMPANIES ON ADJUSTING EXISTING UTILITY LINE AS REQUIRED BY CUT AND FILL AT NO ADDITIONAL COST TO THE OWNER.

CONTRACTOR SHALL NOTIFY ENGINEER OF RECORD AND ARCHITECT SHOULD ANY LIGHT POLE OR SIGN FOUNDATION CONFLICT WITH ANY UTILITY AND/OR STORM SEWER SYSTEM.

GENERAL CONTRACTOR SHALL PROVIDE 2" x 2" x 6" THICK CONCRETE APRON AT ALL CLEANOUTS, VALVES, AND METER ETC. OUTSIDE OF BUILDING.

GENERAL CONTRACTOR SHALL BE RESPONSIBLE FOR ALL TAP AND TIE ON FEET REQUIRED, AS WELL AS COST OF UNDERGROUND SERVICE CONNECTIONS TO THE BUILDING.

ELECTRICAL SERVICE TO PAD MOUNTED TRANSFORMER SHALL BE RUN UNDERGROUND FROM ROAD RIGHT-OF-WAY TO TRANSFORMER LOCATION. ASSOCIATED COST BY GENERAL CONTRACTOR.

UTILITY CONTRACTOR SHALL FURNISH (2) - 4" TELEPHONE CONDUITS AS SHOWN ON PLAN, VERIFY LOCATION OF TIE IN AT TELEPHONE COMPANIES SERVICE LINE, PROVIDE NON-FLAME RATED CONDUIT.

ALL DIMENSIONS, UNLESS OTHERWISE NOTED, ARE MEASURED TO THE CENTERLINE OF PIPE OR FITTING, FACE OF CURB, THE EDGE OF FINISHING, THE EDGE OF STRUCTURE OR FACE OF THE MEMBER OF THE BUILDING.

ALL WATER AND SANITARY LEAD TO BUILDING SHALL END 7 FEET OUTSIDE THE BUILDING LIMIT AS SHOWN ON PLAN AND SHALL BE PROVIDED WITH A TEMPORARY PLUG AT END. EXCEPT THE FIRE LINE SHOULD BE TIED UP 1' ABOVE E.L. IN SPREADER ROOM. REFER TO FIRE PROTECTION SHEETS FOR LOCATION AND DETAIL OF FIRE LINE LEAD IN.

REFER TO PLUMBING SHEETS FOR LOCATION OF SEWER, DOMESTIC, AND IRRIGATION CONNECTIONS.

ALL TRENCHING, PIPE LAYING, AND BACK-FILLING PROCEDURES SHALL BE IN ACCORDANCE WITH FEDERAL OSHA REGULATIONS.

GENERAL CONTRACTOR SHALL HAVE APPROVAL OF ALL GOVERNING AGENCIES HAVING JURISDICTION OVER THIS SYSTEM PRIOR TO INSTALLATION.

ALL WORK TO BE DONE IN STRICT ACCORDANCE WITH THE STANDARD SITE SPECIFICATIONS.

UTILITY NOTE LIST

Items indicated by the following symbols are shown on this sheet.

- (V) MAINTAIN MINIMUM 24" VERTICAL SEPARATION
- (H) MAINTAIN MINIMUM 10' HORIZONTAL SEPARATION (WALL OF PIPE TO WALL OF PIPE)
- (U) CONTRACTOR TO CORE DRILL EXISTING MANHOLE. USE APPROVED SEAL AND NON-SHRINK GROUT. RESHAPE INVERT TO PROVIDE SMOOTH FLOW AND RAISE RIM ELEVATION TO MATCH PROPOSED GRADES. CONTRACTOR SHALL PROVIDE AN AS-BUILT OF THE NEW INVERTS AND RIM ELEVATIONS.

AS BUILT PLANS
CONTRACTOR: UTILITIES PLUS
INSPECTOR: RANDY VOTH, C.E.D.
PDF BY: C.C., 12-18-2012

DRAINAGE AND CONSERVATION PROPERTY
LOWEST LOT ELEVATION (NAVD88) = 1350.8
COMMUNITY NO. 200328
PANEL NO. 20173C0330E (2/2/2007)

FUTURE BUILDING
(2.545 ACRES)

Academy
SPORTS + OUTDOORS
71K Non-PROTO FOOTPRINT
Total - 73,322 sqft
Sales - 62,048 sqft
Receiving - +/- 7,153 sqft
F.F.E = 1354.00
(6.425 ACRES)
SALES AREA

LONGHORN
(UNDER CONSTRUCTION)
1.147 ACRES

EXISTING
PANDA EXPRESS
0.648 ACRES

N. Maize Road
(140' Public R/W)

W. CENTRAL
PARK ST.

PRIVATE
DRIVE

Lot 2
(Existing Plat of
Pearson Commercial Addition)

EXISTING LOWE'S

WETLANDS AND
CONSERVATION PROPERTY
UNPLANTED

ON SITE BENCHMARK

ON-SITE BENCHMARK No. 1: Top of curb at end approximately 7' west of east end of retaining wall at north line of property. ELEVATION: 1356.23 (DATUM NAVD88)

ON-SITE BENCHMARK No. 2: Square cut top of curb at NW corner Lowe's parking lot. ELEVATION: 1353.41 (DATUM NAVD88) See site plan or survey for location.

UTILITY DETAIL LIST

Items indicated by the following symbols are shown on this sheet and referenced on detail sheets, which are included as part of this set of plans.

- D156A FIRE HYDRANT ASSEMBLY
- D313 BOLLARD DETAIL
- D315 CLEAN OUT DETAIL

UTILITY NOTE LIST

Items indicated by the following symbols are shown on this sheet.

- (V) MAINTAIN MINIMUM 24" VERTICAL SEPARATION
- (H) MAINTAIN MINIMUM 10' HORIZONTAL SEPARATION (WALL OF PIPE TO WALL OF PIPE)
- (U) CONTRACTOR TO CORE DRILL EXISTING MANHOLE. USE APPROVED SEAL AND NON-SHRINK GROUT. RESHAPE INVERT TO PROVIDE SMOOTH FLOW AND RAISE RIM ELEVATION TO MATCH PROPOSED GRADES. CONTRACTOR SHALL PROVIDE AN AS-BUILT OF THE NEW INVERTS AND RIM ELEVATIONS.

Academy Sports + Outdoors

Civil Engineering Inc. - Bentonville • Kansas City

UTILITY PLAN
A NEW FACILITY FOR:
ACADEMY SPORTS + OUTDOORS
N. MAIZE ROAD & W. CENTRAL PARK STREET
WICHITA KANSAS

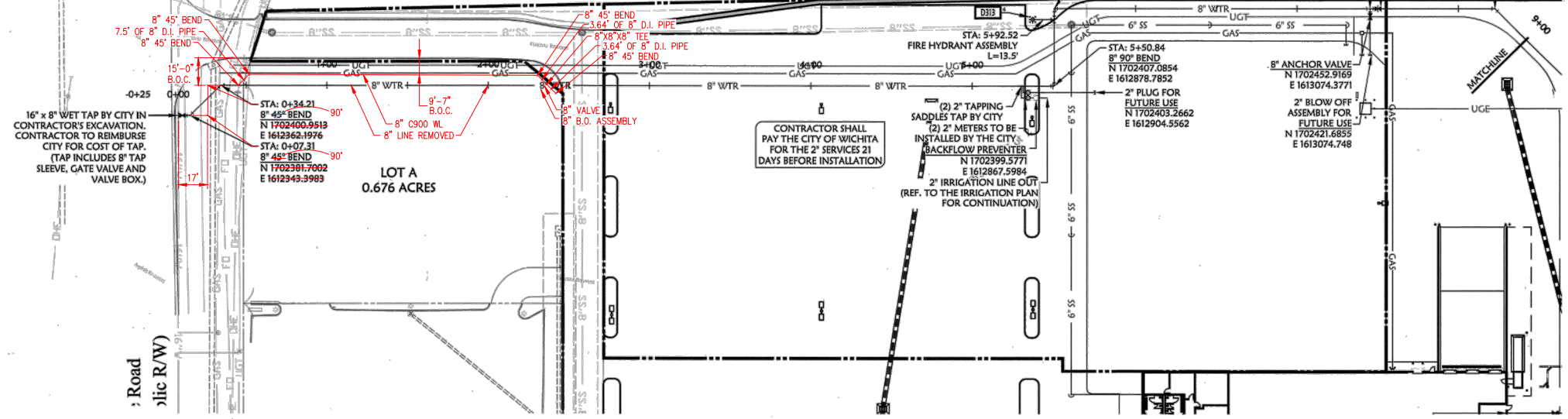
DRAWN BY: JON
APPV. BY: SM
DWG. NAME: 10-1003 Project C1st
DATE: 01/31/2012
JOB NO.: 10-1003
SHEET NO.: 6.0

c:\my_box_files\poe projects\10-1003 wichita ks academy sport\dwg\project\cons set\10-1003 project set.dwg - Plotted on 3/18/2012 10:19:34 AM @ a scale of 1:1 to pdf-xchange 4.0.pc3 by Jon Berry

ON SITE BENCHMARK
 ON-SITE BENCHMARK No. 1: Top of curb at end approximately 7' west of east end of retaining wall at north line of property. ELEVATION: 1356.23 (DATUM NAVD8S)
 ON-SITE BENCHMARK No. 2: Square cut top of curb at NW corner Lowe's parking lot. ELEVATION: 1353.41 (DATUM NAVD8S). See site plan or survey for location.

AS BUILT PLANS
 CONTRACTOR: UTILITIES PLUS
 INSPECTOR: RANDY VOTH, C.E.D.
 PDF BY: C.C., 12-18-2012

DRAINAGE AND CONSERVATION PROPERTY
 LOWEST LOT ELEVATION (NAV88) = 1350.8
 COMMUNITY NO. 200328
 PANEL NO. 20173C0330E (2/2/2007)



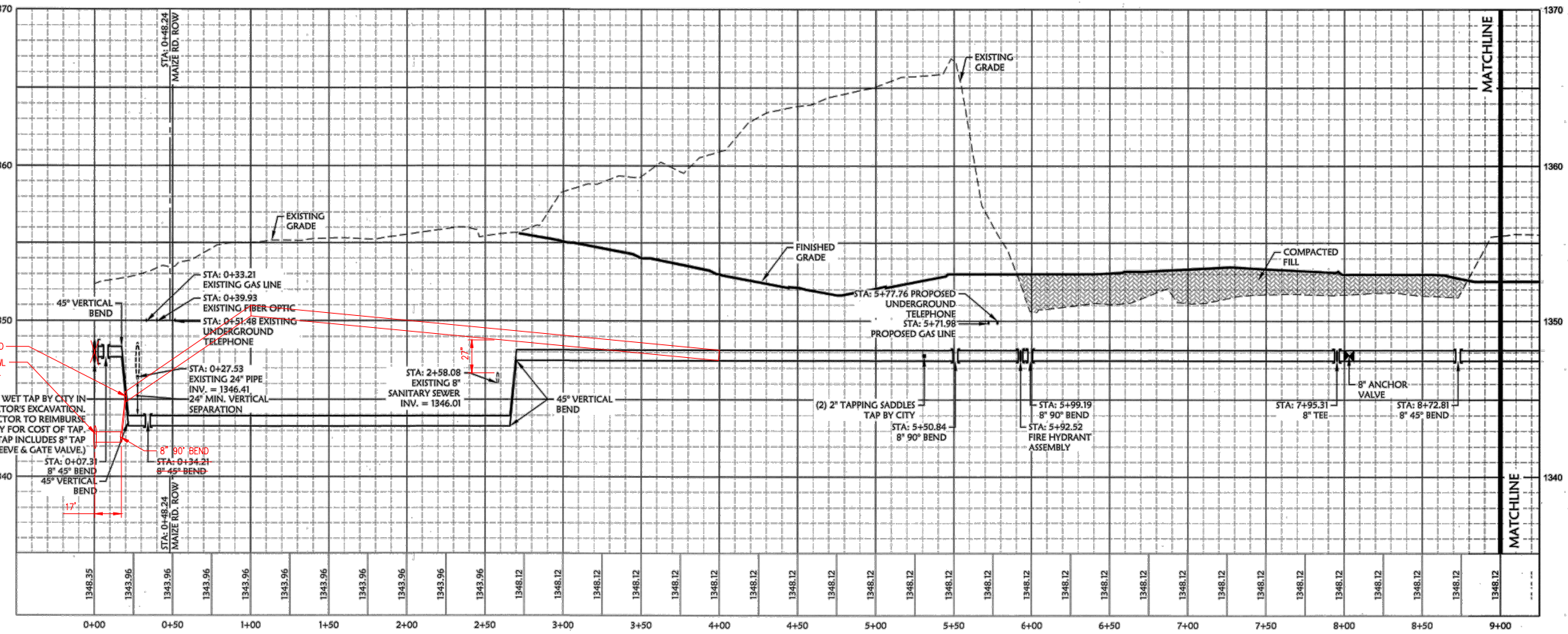
811
 Know what's below.
 Call before you dig.

UTILITY PROPOSED FEATURES

BOUNDARY LINE	BOUNDARY LINE
RIGHT OF WAY LINE	RIGHT OF WAY LINE
EASEMENT LINE	EASEMENT LINE
CONCRETE CURB AND GUTTER	CONCRETE CURB AND GUTTER
FENCE	FENCE
GUARD RAIL	GUARD RAIL
RETAINING WALL	RETAINING WALL
STORM DRAIN (SEE GRADING PLAN FOR SIZE)	STORM DRAIN (SEE GRADING PLAN FOR SIZE)
SANITARY SEWER SERVICE	SANITARY SEWER SERVICE
WATER SERVICE	WATER SERVICE
UNDERGROUND ELECTRIC SERVICE	UNDERGROUND ELECTRIC SERVICE
UNDERGROUND TELEPHONE SERVICE	UNDERGROUND TELEPHONE SERVICE
OVERHEAD ELECTRIC SERVICE	OVERHEAD ELECTRIC SERVICE
OVERHEAD TELEPHONE SERVICE	OVERHEAD TELEPHONE SERVICE
FIBER OPTIC CABLE SERVICE	FIBER OPTIC CABLE SERVICE
GAS SERVICE	GAS SERVICE
DRAINAGE STRUCTURES (SEE GRADING PLAN FOR TYPE)	DRAINAGE STRUCTURES (SEE GRADING PLAN FOR TYPE)
SANITARY SEWER MANHOLE	SANITARY SEWER MANHOLE
FIRE HYDRANT WITH GUARD POSTS	FIRE HYDRANT WITH GUARD POSTS
UTILITY POLE	UTILITY POLE
WATER LINE TEE, BEND, VALVE, AND PLUG	WATER LINE TEE, BEND, VALVE, AND PLUG

UTILITY GENERAL NOTES

ALL WATER LINES SHALL HAVE A MINIMUM COVER OF 3'-0" ABOVE TOP OF PIPE.
 ALL SANITARY SEWER LINES SHALL HAVE A MINIMUM COVER OF 3'-0" ABOVE TOP OF PIPE.
 PROPOSED UTILITIES TO BE INSTALLED IN THE SAME TRENCH INSTALLATION SHALL BE COORDINATED AND APPROVED BY LOCAL UTILITY COMPANIES.
 VERIFY LOCATION AND DEPTH OF EXISTING UTILITY BEFORE CONSTRUCTING PROPOSED UTILITY.
 CONTRACTOR SHALL COORDINATE ANY DISRUPTIONS TO EXISTING UTILITY SERVICES WITH ADJACENT PROPERTY OWNERS.
 ALL ELECTRIC, TELEPHONE AND GAS EXTENSIONS INCLUDING SERVICE LINES SHALL BE CONTRACTED TO THE APPROPRIATE UTILITY COMPANY SPECIFICATIONS. ALL UTILITY DISCONNECTIONS SHALL BE COORDINATED WITH THE DESIGNATED UTILITY COMPANIES.
 CONSTRUCTION SHALL NOT TAKE ON ANY PUBLIC UTILITY SYSTEM UNLESS WRITTEN APPROVAL HAS BEEN RECEIVED BY THE ENGINEER FROM THE APPROPRIATE GOVERNING AUTHORITY AND CONTRACTOR HAS BEEN NOTIFIED BY THE ENGINEER.
 THE MINIMUM HORIZONTAL SEPARATION BETWEEN THE CLOSEST TWO POINTS OF THE WATER AND SEWER LINE IS TEN FEET (10'). THE MINIMUM VERTICAL SEPARATION BETWEEN THE CLOSEST TWO POINTS OF THE WATER AND SEWER LINE IS TWENTY FOUR (24) INCHES.
 PRIOR TO THE CONSTRUCTION OF OR CONNECTION TO ANY FROM DRAIN, SANITARY SEWER, WATER MAIN OR ANY OF THE DRY UTILITIES, THE CONTRACTOR SHALL EXCAVATE, VERIFY AND CALCULATE ALL POINTS OF CONNECTION AND ALL UTILITY CROSSINGS AND INFORM CLARK CIVIL ENGINEERING AND THE PROPERTY OWNER OF ANY CONFLICT OR RESOLUTION FROM THE PLAN. NOTIFICATION SHALL BE MADE A MINIMUM OF 14 DAYS PRIOR TO CONSTRUCTION. CLARK CIVIL ENGINEERING AND ITS CLIENTS SHALL BE HELD HARMLESS IN THE EVENT THAT THE CONTRACTOR FAILS TO MAKE SUCH NOTIFICATION.
 ALL WATER LINE FITTINGS SHALL BE INSTALLED WITH THRUST BLOCKING IN ACCORDANCE WITH THE CITY OF WICHITA DEPARTMENT STANDARDS (REFER TO DETAIL SHEETS).
 ALL WATER AND SEWER LINE PIPE BEDDING SHALL BE INSTALLED IN ACCORDANCE WITH THE CITY OF WICHITA DEPARTMENT STANDARDS (REFER TO DETAIL SHEETS).
 CONTRACTOR SHALL BE RESPONSIBLE FOR NOTIFYING THE CITY CONSTRUCTION DIVISION TO SCHEDULE A PRE-CONSTRUCTION MEETING AT LEAST 48 HOURS PRIOR TO STARTING ANY WORK ON THE PROJECT. CONTRACTOR SHALL OBTAIN ALL NECESSARY PERMITS.
 EXISTING UTILITIES ACROSS OR ALONG THE LINE OF THE PROPOSED WORK ARE SHOWN ONLY IN AN APPROXIMATE LOCATION ON THESE PLANS. CONTRACTOR SHALL CALL THE STATE ONE CALL SYSTEM OR DESIGNATED UTILITY COMPANY PRIOR TO CONSTRUCTION. CONTRACTOR SHALL ON HIS OWN INITIATIVE AND AT HIS OWN ADDITIONAL COST, LOCATE ALL UNDERGROUND LINES AND STRUCTURES AT HIS OWN RISK. CONTRACTOR SHALL BE RESPONSIBLE FOR ANY DAMAGE TO UNDERGROUND LINES OR STRUCTURES.
 FIRE HYDRANT ASSEMBLY SHALL BE INSTALLED IN ACCORDANCE WITH THE CITY OF WICHITA DEPARTMENT STANDARDS (REFER TO DETAIL SHEETS).
 CONTRACTOR SHALL NOT TAP OR OTHERWISE PENETRATE EXISTING WATER AND SEWER MAIN LINES WITHOUT PRIOR APPROVAL FROM THE CITY INSPECTOR. CONTRACTOR IS RESPONSIBLE FOR AVOIDING SPILLAGE OF RAW SEWAGE. CONTRACTOR SHALL PROVIDE ALL LEAKS PLUGGING AND PUMPING EQUIPMENT NECESSARY TO AVOID SPILLAGE. CONTRACTOR SHALL NOT OPERATE VALVES ON EXISTING WATER MAINS.
 THE EXISTING UTILITIES AND OBSTRUCTIONS SHOWN ARE FROM THE BEST AVAILABLE RECORDS AND SHALL BE VERIFIED BY THE CONTRACTOR PRIOR TO CONSTRUCTION. NECESSARY PRECAUTIONS SHALL BE TAKEN BY THE CONTRACTOR TO PROTECT EXISTING SERVICES AND MAINS, AND ANY DAMAGE TO THEM SHALL BE REPAIRED IMMEDIATELY AT THE CONTRACTOR'S EXPENSE.
 IT SHALL BE THE CONTRACTOR'S RESPONSIBILITY TO SPECIFICALLY IDENTIFY WORK UNITS REQUIRED TO COMPLETE THE PROJECT SHALL NOT RELIEVE THE CONTRACTOR OF HIS RESPONSIBILITY TO PROTECT SUCH WORK.
 CONTRACTOR SHALL MAINTAIN TOP OF PROPOSED SANITARY SEWER MANHOLE TO PROPOSED GRADE. IF A DISCREPANCY OCCURS BETWEEN PROPOSED GRADE AND PROPOSED STRUCTURE TOP, THE GRADE SHALL CONTROL. IF THE DISCREPANCY IS MORE THAN 4 INCHES THE CONTRACTOR SHALL CONTACT THE ENGINEER OF RECORD.
 ALL UTILITIES, INCLUDING FROM SEWER, SHOWN WITHIN PUBLIC EASEMENTS OR RIGHT OF WAY SHALL BE CONTRACTED TO THE GOVERNING AGENCY SPECIFICATIONS. ALL OTHER UTILITIES SHALL BE CONTRACTED TO THE CITY OR THE GOVERNING AGENCY'S SPECIFICATIONS, WHOEVER IS MORE STRINGENT. IF THERE IS A QUESTION AS TO WHICH SPECIFICATIONS SHOULD APPLY THE CONTRACTOR SHALL CONTACT THE ENGINEER OF RECORD.
 IF SANITARY SEWER MANHOLE IS LOCATED IN A GRAVE AREA OR SOPE, CONTRACTOR SHALL CONTRACT MANHOLE TOP TO AN ELEVATION 6 INCHES HIGHER THAN THE PROPOSED GRADE. THIS CANNOT BE ACHIEVED THEN CONTRACTOR SHALL USE A WATER TIGHT MANHOLE COVER THAT MEETS OR EXCEEDS THE DWG/DEV/DEVELOPER'S STANDARD SPECIFICATIONS.
 ALL WATER MAINS SHALL BE HYDROSTATICALLY TESTED AND DISINPECTED BEFORE ACCEPTANCE. SEE SITE WORK SPECIFICATIONS.
 CONTRACTOR SHALL COORDINATE WITH UTILITY COMPANIES ON ADJUSTING EXISTING UTILITY LINE AS REQUIRED BY CUT AND FILL AT NO ADDITIONAL COST TO THE OWNER.
 CONTRACTOR SHALL NOTIFY ENGINEER OF RECORD AND ARCHITECT SHOULD ANY GROUND OR SIGN FOUNDATIONS CONTACT WITH ANY UTILITY AND/OR FROM OTHER UTILITIES.
 GENERAL CONTRACTOR SHALL PROVIDE 2" x 2" x 6" THICK CONCRETE ANCHOR AT ALL CLEANOUTS, VALVES, AND METER ETC. OUTSIDE OF BUILDING.
 GENERAL CONTRACTOR WILL BE RESPONSIBLE FOR ALL TAP AND THE ON FEES REQUIRED, AS WELL AS COST OF UNDERGROUND SERVICE CONNECTION TO THE BUILDING.
 ELECTRICAL SERVICE TO PAD MOUNTED TRANSFORMER SHALL BE RUN UNDERGROUND, FROM ROAD RIGHT OF WAY TO TRANSFORMER LOCATION. ASSOCIATED COST BY GENERAL CONTRACTOR.
 UTILITY CONTRACTOR SHALL REPAIR 6" x 4" TELEPHONE CONDUITS AS SHOWN ON DRAWING. VERIFY LOCATION OF TEE IN AT TELEPHONE COMPANIES SERVICE LINE. PROVIDE NYLON PULL CORD INSIDE CONDUIT.
 ALL DIMENSIONS, UNLESS OTHERWISE NOTED, ARE MEASURED TO THE CENTERLINE OF PIPE OR FITTING, FACE OF CURB, THE EDGE OF PAVEMENT, THE EDGE OF SIDEWALK OR FACE CORNER OF THE BUILDING(S).
 ALL WATER AND SANITARY LEADS TO BUILDING SHALL END 5' (FEET) OUTSIDE THE BUILDING UNITS AS SHOWN ON PLAN AND SHALL BE PROVIDED WITH A TEMPORARY PLUG AT END. EXCEPT THE END LINE SHOULD BE FITTED UP 1' ABOVE F.F.E. IN BREAKER ROOM. REFER TO FIRE PROTECTION SHEETS FOR LOCATION AND DEPTH OF THE LINE ENDING IN.
 REFER TO REMAINING SHEETS FOR LOCATION OF SEWER, DOMESTIC, AND IRRIGATION CONNECTIONS.
 ALL TRENCHING, PIPE LAYING, AND BACK FILLING PROCEDURES SHALL BE IN ACCORDANCE WITH FEDERAL OSHA REGULATIONS.
 GENERAL CONTRACTOR SHALL HAVE APPROVAL OF ALL GOVERNING AGENCIES HAVING JURISDICTION OVER THE SYSTEM PRIOR TO INSTALLATION.
 ALL WORK TO BE DONE IN STRICT ACCORDANCE WITH THE STANDARD SITE SPECIFICATIONS.



WATERLINE A
 VERTICAL SCALE: 1" = 4'
 HORIZONTAL SCALE: 1" = 40'

Academy Sports + Outdoors

Civil Engineering Inc.
 Bentonville • Kansas City

WATERLINE "A" PLAN AND PROFILE
 A NEW FACILITY FOR:
ACADEMY SPORTS + OUTDOORS
 N. MAIZE ROAD & W. CENTRAL PARK STREET WICHITA, KANSAS

DRAWN BY: JON SM
 APPV. BY: SM
 DWG. NAME: 10-1003 Profile CSet
 DATE: 01/31/2012
 JOB NO: 10-1003
 SHEET NO: 6.1

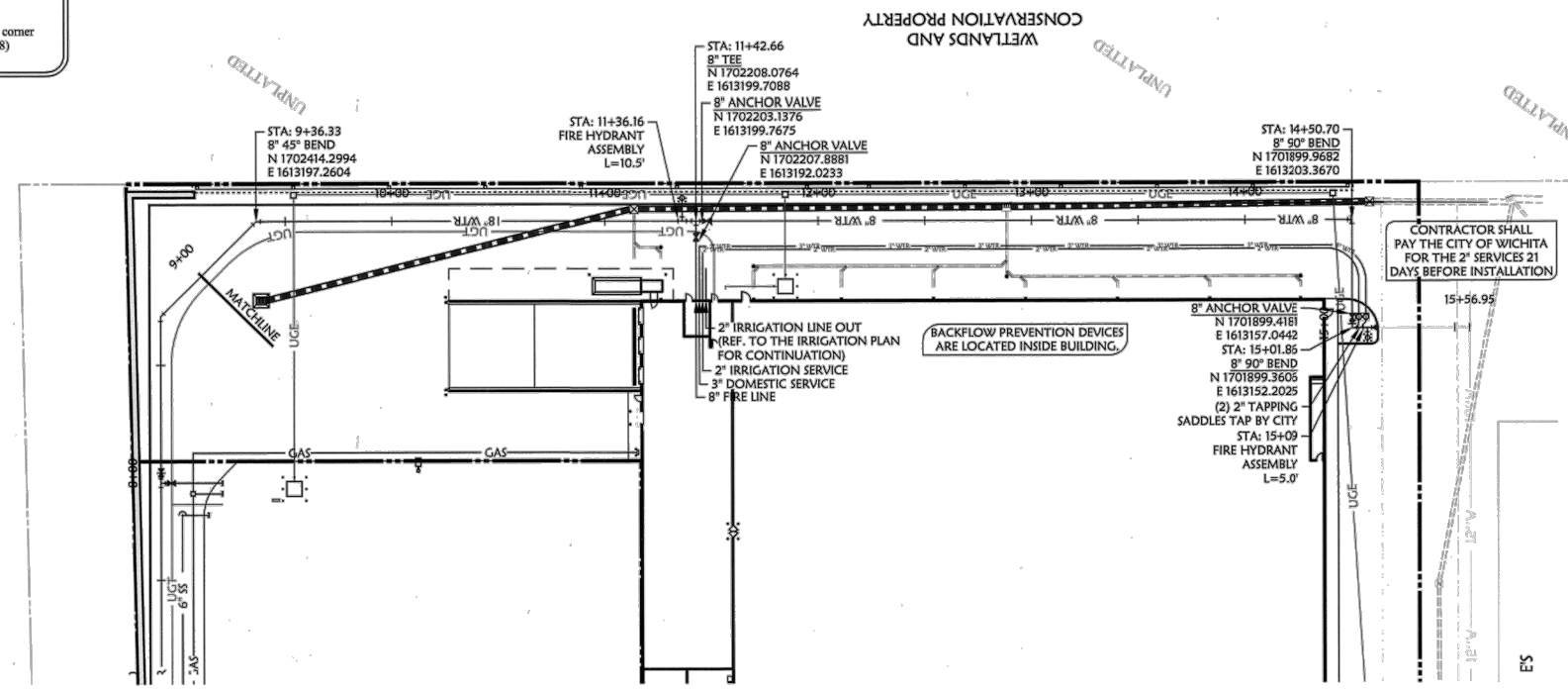
c:\my box files\cove projects\10-1003 wichita academy sports\dwg\project\const\set\10-1003 profiles.csel.dwg - Plotted on 3/8/2012 10:05:07 AM @ a scale of 1:1 to pdfxchange 4.0.pcl3 by Jon Berry

ON-SITE BENCHMARK

ON-SITE BENCHMARK No. 1: Top of curb at end approximately 7' west of east end of retaining wall at north line of property. ELEVATION: 1356.23 (DATUM NAVD88)

ON-SITE BENCHMARK No. 2: Square cut top of curb at NW corner Lowe's parking lot. ELEVATION: 1353.41 (DATUM NAVD88) See site plan or survey for location.

AS BUILT PLANS
CONTRACTOR: UTILITIES PLUS
INSPECTOR: RANDY VOTH, C.E.D.
PDF BY: C.C., 9-12-2012



UTILITY PROPOSED FEATURES

---	BOUNDARY LINE
---	RIGHT OF WAY LINE
---	EASEMENT LINE
---	CONCRETE CURB AND GUTTER
---	FENCE
---	GUARD RAIL
---	RETAINING WALL
---	STORM DRAIN (SEE GRADING PLAN FOR SIZE)
---	SANITARY SEWER SERVICE
---	WATER SERVICE
---	UNDERGROUND ELECTRIC SERVICE
---	UNDERGROUND TELEPHONE SERVICE
---	OVERHEAD ELECTRIC SERVICE
---	OVERHEAD TELEPHONE SERVICE
---	FIBER OPTIC CABLE SERVICE
---	GAS SERVICE
---	DRAINAGE STRUCTURES (SEE GRADING PLAN FOR TYPE)
---	SANITARY SEWER MANHOLE
---	FIRE HYDRANT WITH GUARD POSTS
---	UTILITY POLE
---	WATER LINE TEE, BEND, VALVE, AND PLUG

UTILITY GENERAL NOTES

ALL WATER LINES SHALL HAVE A MINIMUM OF 3'-0" COVER ABOVE TOP OF PIPE.

ALL SANITARY SEWER LINES SHALL HAVE A MINIMUM COVER OF 3'-0" COVER ABOVE TOP OF PIPE.

PROPOSED UTILITIES TO BE BURIED IN THE SAME TRENCH INSTALLATION SHALL BE COORDINATED AND APPROVED BY LOCAL UTILITY COMPANIES.

VERIFY LOCATION AND DEPTH OF EXISTING UTILITY BEFORE CONSTRUCTING PROPOSED UTILITY.

CONTRACTOR SHALL COORDINATE ANY DISRUPTIONS TO EXISTING UTILITY SERVICES WITH ADJACENT PROPERTY OWNERS.

ALL ELECTRIC, TELEPHONE AND GAS EXTENSIONS INCLUDING SERVICE LINES SHALL BE CONSTRUCTED TO THE APPROPRIATE UTILITY COMPANY SPECIFICATIONS. ALL UTILITY DISCONNECTIONS SHALL BE COORDINATED WITH THE DESIGNATED UTILITY COMPANIES.

CONSTRUCTION SHALL NOT START ON ANY PUBLIC UTILITY SYSTEM UNITS WRITTEN APPROVAL HAS BEEN RECEIVED BY THE ENGINEER FROM THE APPROPRIATE GOVERNING AUTHORITY AND CONTRACTOR HAS BEEN NOTIFIED BY THE ENGINEER.

THE MINIMUM HORIZONTAL SEPARATION BETWEEN THE CLOSEST TWO POINTS OF THE WATER AND SEWER LINE IS TEN FEET (10'). THE MINIMUM VERTICAL SEPARATION BETWEEN THE CLOSEST TWO POINTS OF THE WATER AND SEWER LINE IS TWENTY FOUR (24) INCHES.

PRIOR TO THE CONSTRUCTION OF OR CONNECTION TO ANY STORM DRAIN, SANITARY SEWER, WATER MAIN OR ANY OF THE DRY UTILITIES, THE CONTRACTOR SHALL EXCAVATE, VERIFY AND CALCULATE ALL POINTS OF CONNECTION AND ALL UTILITY COVERINGS AND INFERIOR COVER CIVIL ENGINEERING AND THE OWNER/DEVELOPER OF ANY CONFLICT OR REQUIRED DEVIATIONS FROM THE PLAN, NOTIFICATION SHALL BE MADE A MINIMUM OF 48 HOURS PRIOR TO CONSTRUCTION. OWNER CIVIL ENGINEERING AND ITS CLIENTS SHALL BE HELD HARMLESS IN THE EVENT THAT THE CONTRACTOR FAILS TO MAKE SUCH NOTIFICATION.

ALL WATER LINE FITTINGS SHALL BE INSTALLED WITH THURST BLOCKING IN ACCORDANCE WITH THE CITY UTILITY DEPARTMENT STANDARDS (REFER TO DETAIL SHEETS).

ALL WATER AND SEWER LINE PIPE BEDDING SHALL BE INSTALLED IN ACCORDANCE WITH THE CITY UTILITY DEPARTMENT STANDARDS (REFER TO DETAIL SHEETS).

CONTRACTOR SHALL BE RESPONSIBLE FOR NOTIFYING THE CITY CONSTRUCTION DIVISION TO SCHEDULE A PRE-CONSTRUCTION MEETING, AT LEAST 48 HOURS PRIOR TO THE STARTING ANY WORK ON THE PROJECT. CONTRACTOR SHALL OBTAIN ALL NECESSARY PERMITS.

EXISTING UTILITIES ACROSS OR ALONG THE LINE OF THE PROPOSED WORK ARE SHOWN ONLY IN AN APPROXIMATE LOCATION ON THESE PLANS. CONTRACTOR SHALL CALL THE STATE ONE-CALL SYSTEM OR DESIGNATED UTILITY COMPANY PRIOR TO CONSTRUCTION. CONTRACTOR SHALL ON HIS OWN INITIATIVE AND AT HIS ADDITIONAL COST, LOCATE ALL UNDERGROUND LINES AND STRUCTURES AS NECESSARY. CONTRACTOR SHALL BE RESPONSIBLE FOR ANY DAMAGE TO UNDERGROUND LINES OR STRUCTURES.

FIRE HYDRANT ASSEMBLY SHALL BE INSTALLED IN ACCORDANCE WITH THE CITY UTILITY DEPARTMENT STANDARDS (REFER TO DETAIL SHEETS).

CONTRACTOR SHALL NOT TAP OR OTHERWISE PENETRATE EXISTING WATER AND SEWER MAIN LINES WITHOUT PRIOR APPROVAL FROM THE CITY INSPECTOR. CONTRACTOR IS RESPONSIBLE FOR AVOIDING SPILLS OF RAW SEWAGE. CONTRACTOR SHALL PROVIDE ALL NECESSARY PLUGS AND PUMPING EQUIPMENT NECESSARY TO AVOID SPILLAGE. CONTRACTOR SHALL NOT OPERATE VALVES ON EXISTING WATER MAINS.

THE EXISTING UTILITIES AND CONNECTIONS SHOWN ARE FROM THE BEST AVAILABLE RECORDS AND SHALL BE VERIFIED BY THE CONTRACTOR TO HIS SATISFACTION PRIOR TO CONSTRUCTION. NECESSARY PRECAUTIONS SHALL BE TAKEN BY THE CONTRACTOR TO PROTECT EXISTING SERVICES AND MAINS, AND ANY DAMAGE TO THEM SHALL BE REPAIRED IMMEDIATELY AT THE CONTRACTOR'S EXPENSE.

IT SHALL BE DICTATEDLY UNDERSTOOD THAT FAILURE TO SPECIFICALLY MENTION WORK WHICH IS REQUIRED TO COMPLETE THE PROJECT SHALL NOT RELIEVE THE CONTRACTOR OF HIS RESPONSIBILITY TO PERFORM SUCH WORK.

CONTRACTOR SHALL MATCH TOP OF PROPOSED SANITARY SEWER MANHOLE TO PROPOSED GRADES. IF A DISCREPANCY OCCURS BETWEEN PROPOSED GRADES AND PROPOSED STRUCTURE TOPS, THE GRADING SHALL GOVERN. IF THE DISCREPANCY IS MORE THAN 4 INCHES THE CONTRACTOR SHALL CONTACT THE ENGINEER OF RECORD.

ALL UTILITIES, INCLUDING STORM SEWER, SHOWN WITHIN PUBLIC EASEMENTS OR RIGHT OF WAYS SHALL BE CONSTRUCTED TO THE GOVERNING AGENCY'S SPECIFICATIONS. ALL OTHER UTILITIES SHALL BE CONSTRUCTED TO THE CITY OR THE GOVERNING AGENCY'S SPECIFICATIONS, WHOEVER IS MORE PREVALENT. IF THERE IS A QUESTION AS TO WHICH SPECIFICATIONS SHOULD APPLY, THE CONTRACTOR SHALL CONTACT THE ENGINEER OF RECORD.

IF SANITARY SEWER MANHOLE IS LOCATED IN A GRADE AREA OR SLOPE, CONTRACTOR SHALL CONSTRUCT MANHOLE TOP TO AN ELEVATION 1 INCH HIGHER THAN THE PROPOSED GRADE. IF THIS CANNOT BE ACHIEVED THEN CONTRACTOR SHALL USE A WATER TIGHT MANHOLE COVER THAT MEETS OR EXCEEDS THE OTHER DEVELOPER'S STANDARD SPECIFICATIONS.

ALL WATER MAINS SHALL BE HYDROSTATICALLY TESTED AND DISINTEGRATED BEFORE ACCEPTANCE. SEE SITE WORK SPECIFICATIONS.

CONTRACTOR SHALL COORDINATE WITH UTILITY COMPANIES ON ADJUSTING EXISTING UTILITY LINE AS REQUIRED BY CUT AND FILL AT NO ADDITIONAL COST TO THE OWNER.

CONTRACTOR SHALL NOTIFY ENGINEER OF RECORD AND SUBJECT (SHOULD ANY LIGHT POLE OR SIGN FOUNDATIONS) CONFLICT WITH ANY UTILITY AND / OR STORM SEWER SYSTEM.

GENERAL CONTRACTOR SHALL PROVIDE 2' x 2' x 4" THICK CONCRETE APRON AT ALL CLEANOUTS, VALVES, AND METER ETC. OUTSIDE OF BUILDING.

GENERAL CONTRACTOR WILL BE RESPONSIBLE FOR ALL TAP AND TIE ON FEES REQUIRED, AS WELL AS COST OF UNDERGROUND SERVICE CONNECTIONS TO THE BUILDING.

ELECTRICAL SERVICE TO PAD MOUNTED TRANSFORMER SHALL BE RUN UNDERGROUND, FROM ROAD RIGHT-OF-WAY TO TRANSFORMER LOCATION. ASSOCIATED COST BY GENERAL CONTRACTOR.

UTILITY CONTRACTOR SHALL FURNISH (2) #4 TELEPHONE CONDUITS, AS SHOWN ON PLAN, VERIFY LOCATION OF TIE-IN AT TELEPHONE COMPANY SERVICE LINE. PROVIDE 18 INCH FULL CORD INSIDE CONDUIT.

ALL DIMENSIONS, UNLESS OTHERWISE NOTED, ARE MEASURED TO THE CENTERLINE OF PIPE OR FITTING, FACE OF CURB, THE EDGE OF PAVEMENT, THE EDGE OF SIDEWALK, THE FACE CORNER OF THE BUILDING, ETC.

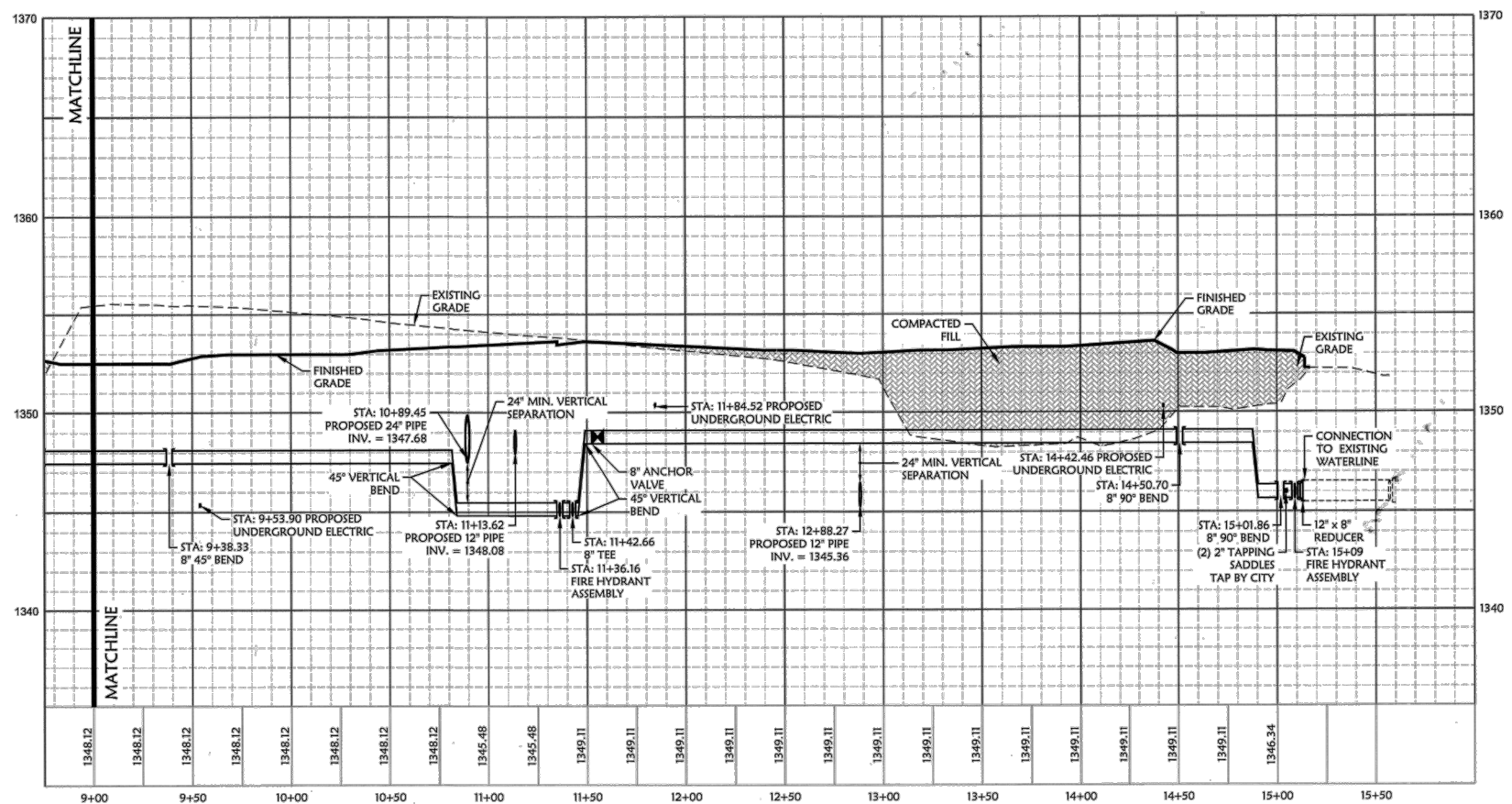
ALL WATER AND SANITARY LEADS TO BUILDING SHALL END 5' (FEET) OUTSIDE THE BUILDING LIMITS AS SHOWN ON PLAN AND SHALL BE PROVIDED WITH A TEMPORARY PLUG AT END. EXCEPT THE FIRE LINE SHOULD BE STOPPED UP 1' ABOVE F.F.E. IN PRIMERIOR ROOM. REFER TO THE PROTECTION SHEET FOR LOCATION AND DETAIL OF FIRE LINE LEAD-IN.

REFER TO PLUMBING SHEETS FOR LOCATION OF SEWER, DOMESTIC, AND IRRIGATION CONNECTIONS.

ALL TRENCHING, PIPE LAYING, AND BACK FILL PROCEDURES SHALL BE IN ACCORDANCE WITH FEDERAL OSHA REGULATIONS.

GENERAL CONTRACTOR SHALL HAVE APPROVAL OF ALL GOVERNING AGENCIES HAVING JURISDICTION OVER THIS SYSTEM PRIOR TO INSTALLATION.

ALL WORK TO BE DONE IN STRICT ACCORDANCE WITH THE STANDARD SITE SPECIFICATIONS.



WATERLINE A
VERTICAL SCALE: 1" = 4'
HORIZONTAL SCALE: 1" = 40'

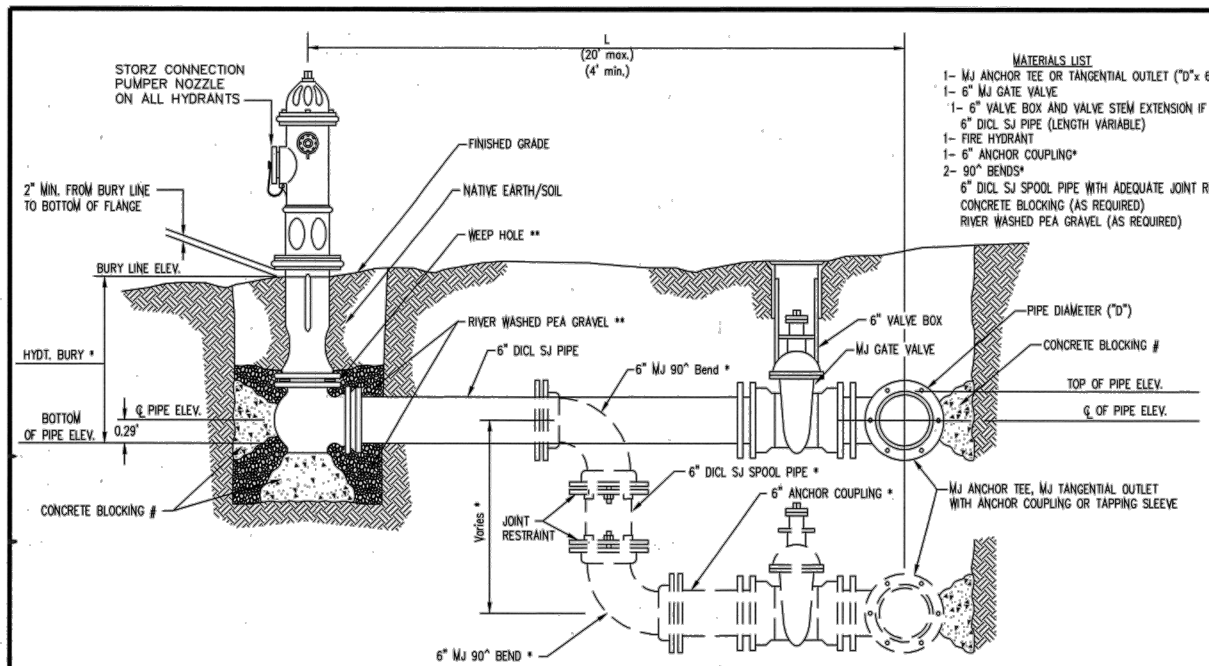
WATERLINE "A" PLAN AND PROFILE
A NEW FACILITY FOR:
ACADEMY SPORTS + OUTDOORS
N. MAIZE ROAD & W. CENTRAL PARK STREET WICHITA, KANSAS

DRAWN BY: JON
APPV. BY: SM
DWG. NAME: 10-1003 Profiles Cset
DATE: 01/31/2012
JOB NO: 10-1003
SHEET NO:

6.2

c:\my box files\voice projects\10-1003 wichita ks academy sports\project\conservat ret\10-1003 profiles cset.dwg - Plotted on 9/15/2012 4:24:23 PM @ a scale of 1:1 to pdf-xchange 4.0.0.plt3 by Jon Berry

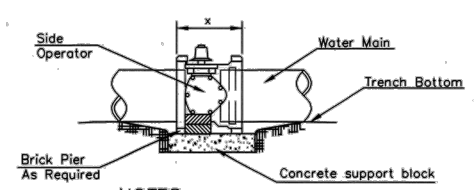
c:\my box files\project\10-1003\wchita\academy.sports+outdoors\project\10-1003 details\cel.dwg - Plotted on 3/8/2012 10:07:00 AM @ a scale of 1:1 to pdf-xchange 4.0.pcl by Jon Berry



- MATERIALS LIST**
- 1- MJ ANCHOR TEE OR TANGENTIAL OUTLET (\"0\" x 6\")
 - 1- 6\"/>

AS BUILT PLANS
CONTRACTOR: UTILITIES PLUS
INSPECTOR: RANDY VOTH, C.E.D.
PDF BY: C.C., 9-12-2012

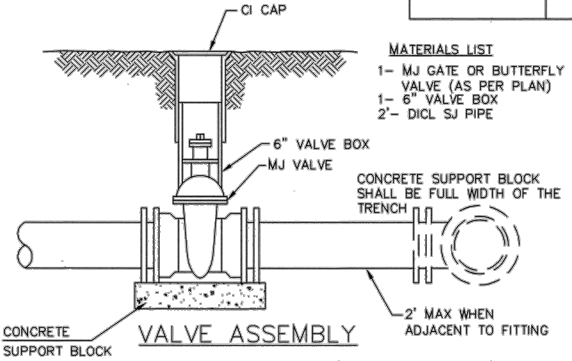
FIRE HYDRANTS REQUIRED				
STATION	BURY LINE ELEVATION	TOP OF PIPE ELEVATION	FIRE HYDRANT BURY REQUIRED	VALVE STEM EXT. REQUIRED (FT)*
LINE "A" 5+92.52	1354.00	1348.04	5.96	1 FT
LINE "A" 11+36.16	1359.50	1345.93	5.0* (B.J.T)	0 FT
LINE "A" 15+04	1359.25	1346.25	7.0	2 FT
LINE "B" 2+05.90	1352.35	1346.25	6.1	1 FT



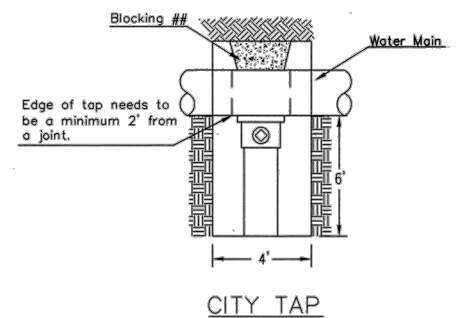
NOTES

- This detail covers Butterfly Valve installation, inclusive, regardless of type of pipe or joint used. 24" and larger lines to be detailed on plans.
- 6" Valve Box and Cover required per City of Wichita Std. Specifications.
- Conc. Support Block to be full width of trench.

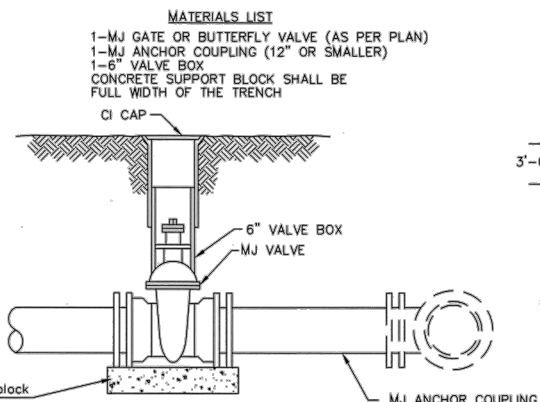
CONCRETE SUPPORT BLOCKING FOR BUTTERFLY VALVE INSTALLATION



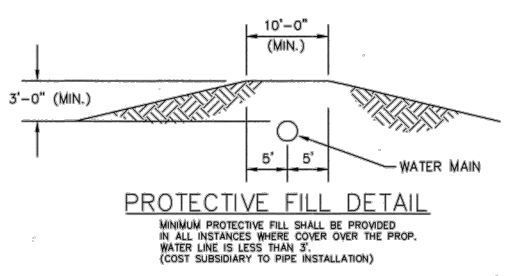
- MATERIALS LIST**
- 1- MJ GATE OR BUTTERFLY VALVE (AS PER PLAN)
 - 1- 6\"/>



When the City of Wichita makes top, blocking is to be done by Contractor

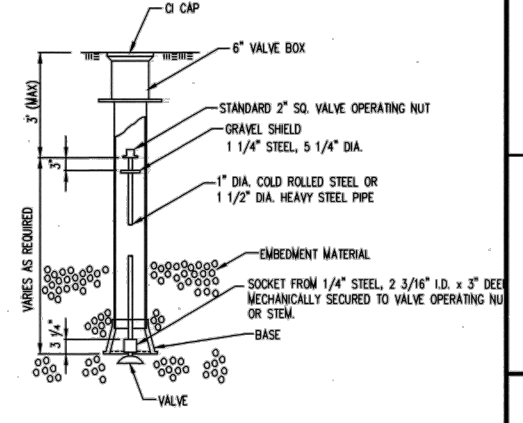


- MATERIALS LIST**
- 1- MJ GATE OR BUTTERFLY VALVE (AS PER PLAN)
 - 1- MJ ANCHOR COUPLING (12\"/>



PROTECTIVE FILL DETAIL

MINIMUM PROTECTIVE FILL SHALL BE PROVIDED IN ALL INSTANCES WHERE COVER OVER THE PROP. WATER LINE IS LESS THAN 3\"/>



VALVE STEM EXTENSION DETAIL

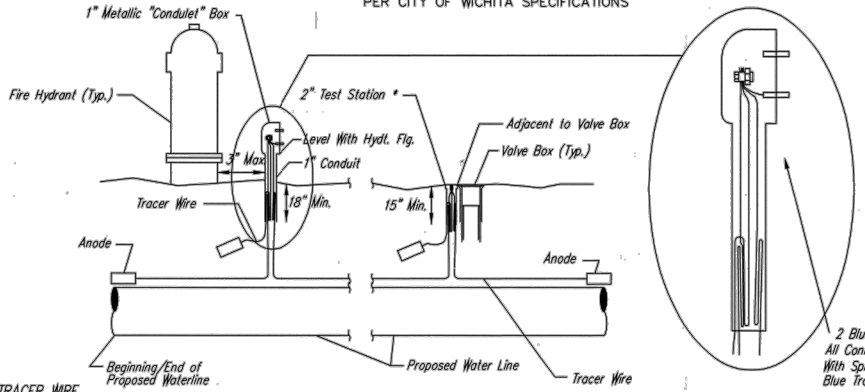
NOTE: ONE VALVE STEM EXTENSION FOR EACH VALVE BURIED GREATER THAN 5\"/>

* IF THE REQUIRED HYDRANT BURY IS IN EXCESS OF 5', BUT LESS THAN 7', CONTRACTOR SHALL USE STANDARD 5' HYDRANT BURY AND HYDRANT BARREL EXTENSIONS AS NECESSARY. IF THE REQUIRED HYDRANT BURY IS GREATER THAN 7', CONTRACTOR SHALL USE 5' HYDRANT BURY, 2-MJ 90° BENDS, 6" ANCHOR COUPLING AND 6" DI CL SPOOL PIPE AS NECESSARY FOR VERTICAL ADJUSTMENT. THE CONTRACTOR SHALL PROVIDE ADEQUATE THRUST BLOCKING AT HYDRANT AND MEGALUGS, ROD AND LUG OR SIMILAR RESTRAINT BETWEEN 90° BENDS TO SECURE ALL FITTINGS DURING TESTING AND OPERATION. THE CONTRACTOR SHALL PROVIDE A VALVE STEM EXTENSION PER DETAIL THIS SHEET.

** CAUTION WEEP HOLES TO BE KEPT CLEAR DURING CONSTRUCTION AND BACKFILL. CONCRETE FOR THRUST BLOCKING SHALL NOT OBSTRUCT WEEP HOLES. PLACE 1 CUBIC FOOT OF RIVER WASHED PEA GRAVEL AROUND EACH WEEP HOLE.

CONCRETE THRUST BLOCKING SHALL BE KEPT CLEAR OF BOLTS, NUTS, AND MJ ACCESSORIES.

FIRE HYDRANT ASSEMBLY
PER CITY OF WICHITA SPECIFICATIONS



TRACER WIRE

Conductive type pipe locator/tracer wire shall be installed to locate all waterline pipe regardless of pipe material. The wire shall extend the entire length of the proposed pipe. The wire shall be taped to the waterline and pulled with the pipe. Split-bolt connectors shall be used at splice locations. Electrical tape shall cover all splices so no bare wire is exposed. Test stations shall be installed adjacent to all fire hydrants along the waterline and at blowoffs or valves near the ends of the waterlines. Any exceptions to the location of test stations shall be approved by the engineer. At each test station, the tracer wire shall be connected to a 3 lb. Zinc or magnesium anode. Anodes shall also be attached to the tracer wire at both the beginning and the end of the proposed waterline. A typical layout of the tracer wire and test station is provided in the above figure.

WIRE

The tracer wire shall be Blue No. 12 THHN annealed soft copper wire with thermal plastic insulation or Blue No. 12 AWG CCS with 30 mil HDPE insulation. The insulation shall be heat, oil, and gasoline resistant as manufactured by Temple Electric or approved equal. To allow for grade adjustment, a minimum of 12" of excess wire shall be coiled at the bottom of the test station for all wires. The insulation sheathing shall be removed such that 1" bare copper wire at all points of connection. Contractor shall attach wire being installed with proposed water main to any tracer wire installed with adjacent waterline projects.

TEST STATIONS

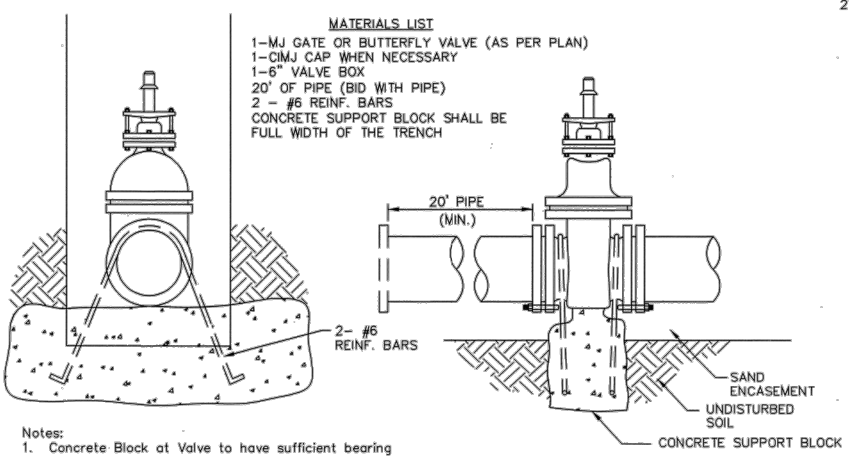
The test station for fire hydrant applications shall be a 1 inch galvanized "condulet" style test station as manufactured by AGRA Industries with a removable solid cover having two leads extending from the face or approved equal. The test station for valve applications shall be 2 inch flush style test station T2PS3B as manufactured by HANDLEY Industries or approved equal. The "condulet" style test station shall be attached to a 1 inch rigid galvanized conduit with a minimum length of 36" and plastic end bushing. The flush style shall have the word "WATER" stamped or molded into the lid. All test stations shall be manufactured using molded blue tops or sufficiently coated with blue enamel paint. The tracer wire and the anode wire shall be installed to allow 10 inches of wire within the test station. In concrete environments such as sidewalks or in the downtown area the contractor shall use the flush style test station. The location of all test stations shall be approved by the engineer, recorded, and shown in the as-built drawings.

ANODES

The anodes shall be 3 lb. zinc or magnesium. The anodes shall be buried at the same elevation as the waterline at each test station. The anodes shall be connected to Black No. 12 THHN annealed soft copper wire which shall be extended to the test station.

TRACER WIRE DETAIL
COST IS SUBSIDIARY TO PIPE INSTALLATION

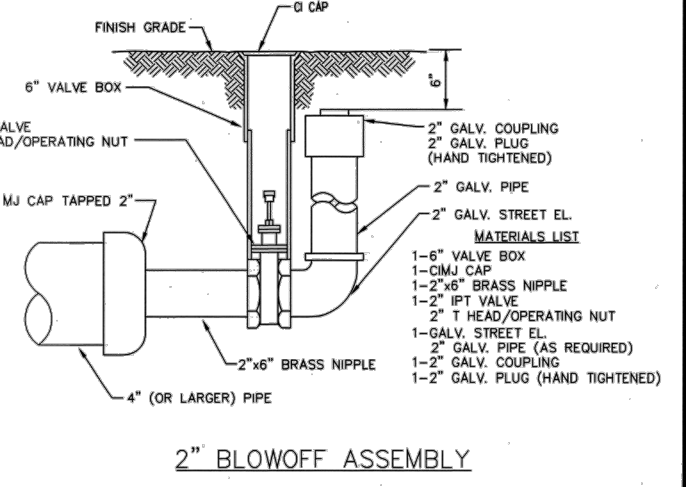
ANCHORED VALVE ASSEMBLY, SPECIAL



Notes:

- Concrete Block at Valve to have sufficient bearing in undisturbed soil to prevent thrust movement as shown in table at right. Field Engineer to determine thrust loading of undisturbed soil and final size of thrust block.
- The thrust block shall be constructed such that bolts, nuts, and other MJ accessories are kept clear of concrete.
- All valves at dead ends and at other locations as called out on the plans shall be blocked as shown here.

THRUST AT VALVES	
VALVE	THRUST AT 150 #/sq
4"	1809 lbs.
6"	4245 lbs.
8"	7540 lbs.
12"	16965 lbs.



2" BLOWOFF ASSEMBLY

WICHITA
PUBLIC WORKS & UTILITIES
ENGINEERING DIVISION

STANDARD WATER ASSEMBLY DETAIL

CITY ENGINEER
JAMES L. ARMOUR, P.E., L.S.

PROJECT NUMBER: OCA NUMBER: DATE: 12/2011

CITY ENGINEER'S OFFICE
CITY HALL - SEVENTH FLOOR
455 NORTH MAIN STREET
WICHITA, KANSAS 67202-1620
(316) 268-4501

BY: _____ DATE: _____ DESCRIPTION: _____

Academy Sports+Outdoors

Temple Electric Inc.
Civil Engineering Inc.
Bentonville • Kansas City

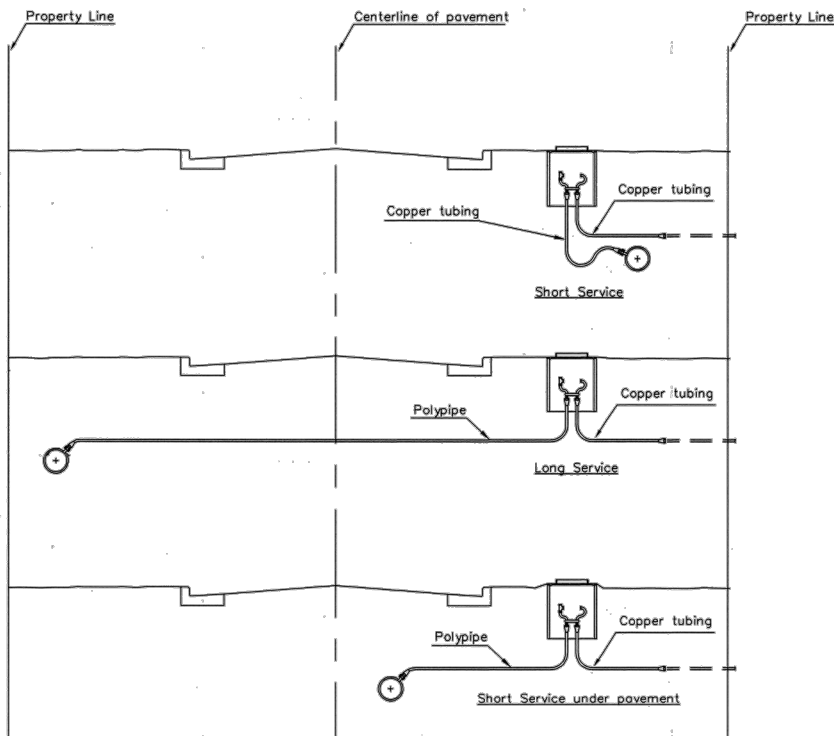
CITY OF WICHITA DETAILS
A NEW FACILITY FOR:
ACADEMY SPORTS + OUTDOORS
N. MAIZE ROAD & W. CENTRAL PARK STREET WICHITA KANSAS

DRAWN BY: JON
APPV. BY: SM
DWG. NAME: 10-1003 Details_C54
DATE: 01/31/2012
JOB NO: 10-1003
SHEET NO: _____

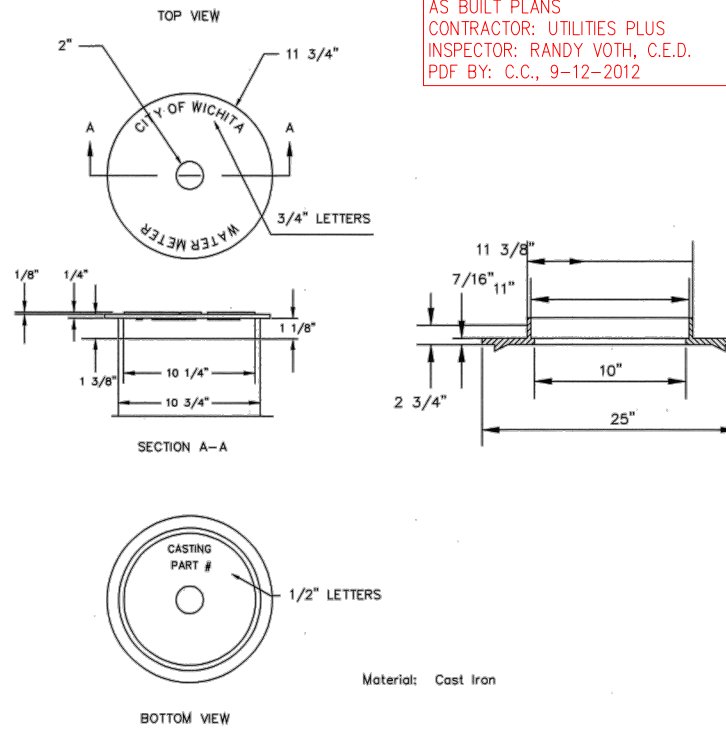
6.7

WI-101

c:\my box files\proj\10-1003 wchita ls academy sport\wg\project\const\10-1003 details\caddwg - Plotted on 3/8/2012 10:07:19 AM @ a scale of 1:1 to pdf\exchange-4.0.pc3 by Jon Berry

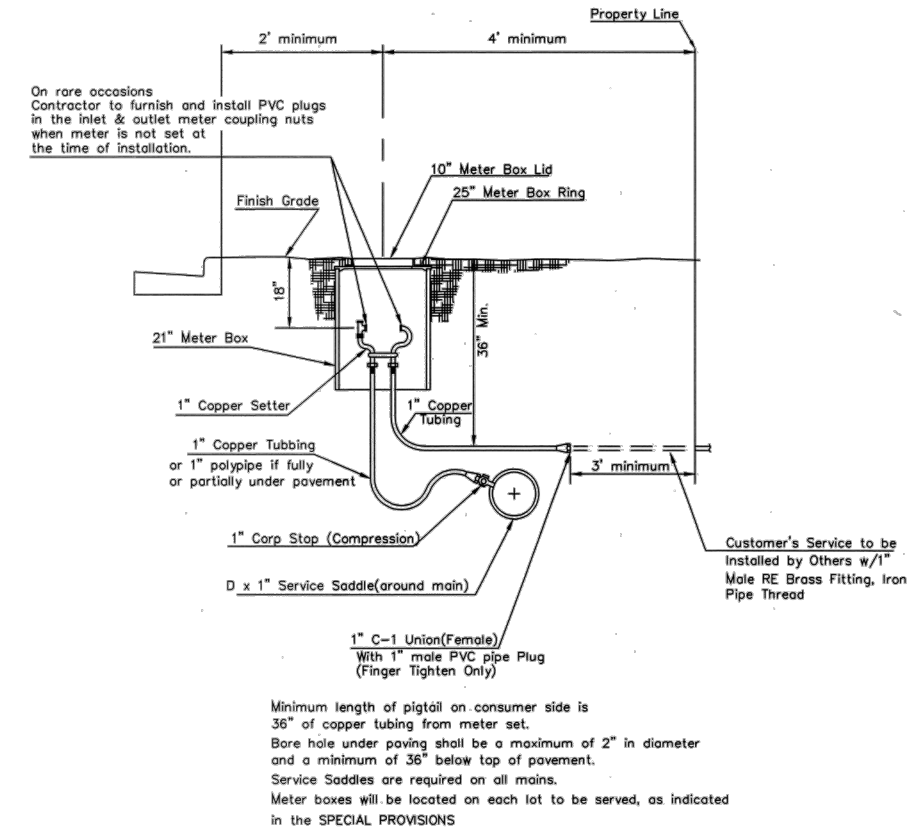


SERVICE TYPES



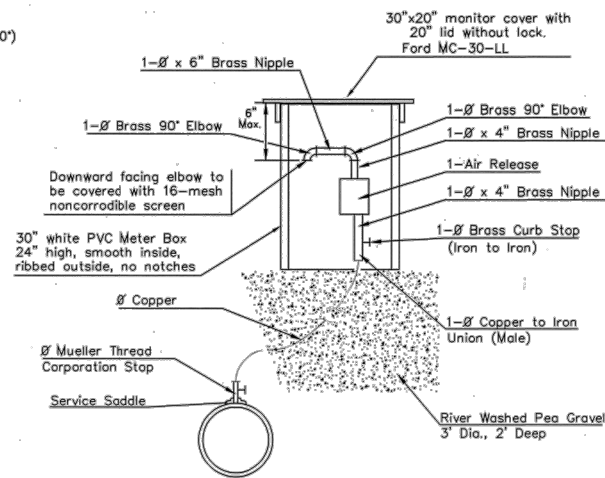
NOT TRAFFIC RATED
RING & LID FOR 1" METER BOX

AS BUILT PLANS
CONTRACTOR: UTILITIES PLUS
INSPECTOR: RANDY VOTH, C.E.D.
PDF BY: C.C., 9-12-2012

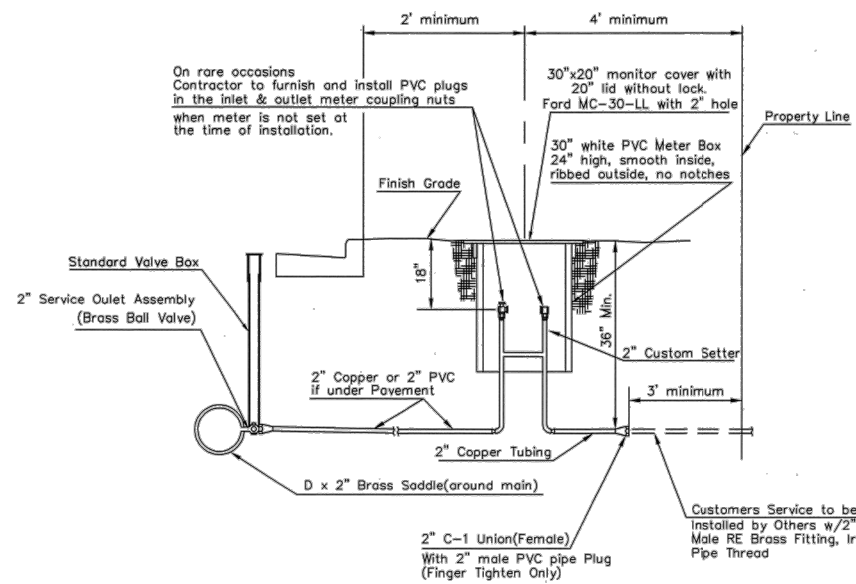


TYPICAL 1" METER SETTING

- 1 - 1/2" Mueller Thread Corporation Stop
- 1 - 1/2" Type "K" Copper Tubing
- 1 - 1/2" Copper to Iron Union (Male)
- 1 - 1/2" Brass Curb Stop (Iron to Iron)
- 2 - 1/2" x 4" Brass Nipple
- Air Release
- 2 - 1/2" Brass Elbows (90°)
- 1 - 1" x 6" Brass Nipple
- 1 - 30" Monitor Cover
- 1 - 20" Meter Lid

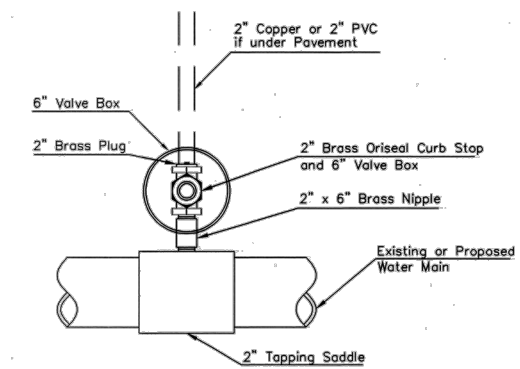


MATERIALS FOR 1" or 2" AIR RELEASE ASSEMBLY
Ø = 1" or 2"



TYPICAL 2" METER SETTING

Note: ONE VALVE STEM EXTENSION FOR EACH VALVE BURIED GREATER THAN 5'.



Note: Where the 2" Service Outlet Assembly is to be used to connect a 2" main to another main, the 2" valve shall be a 2" IPT Gate Valve. 2" ball or globe valves shall not be approved for this use.

2" SERVICE OUTLET ASSEMBLY



STANDARD WATER SERVICE DETAIL
CITY ENGINEER
JAMES L. ARMOUR, P.E., L.S.

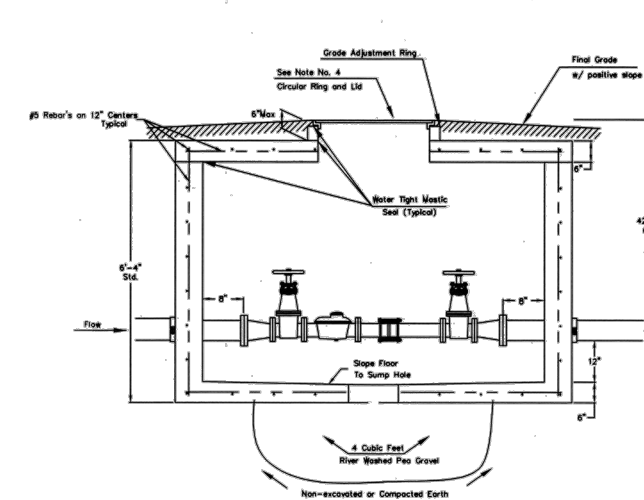
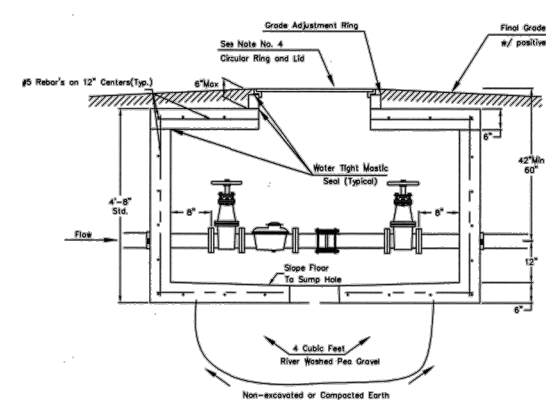
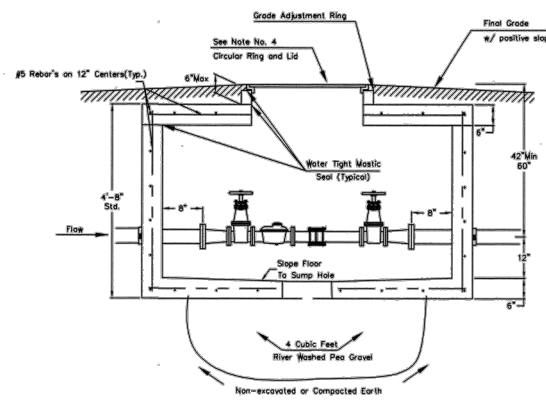
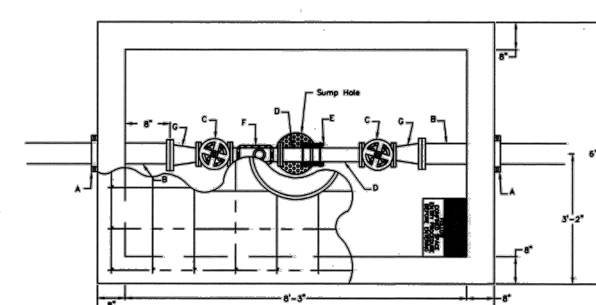
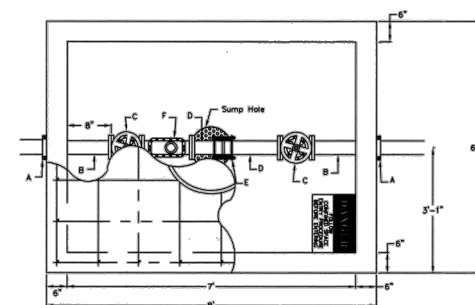
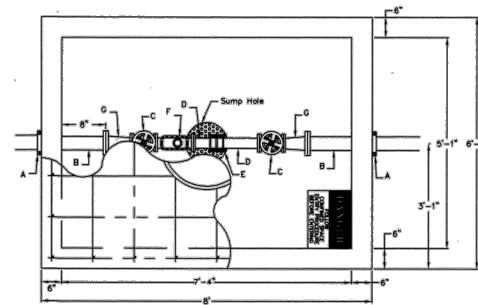
PROJECT NUMBER	OCA NUMBER	DATE
		12/2011
CITY ENGINEER'S OFFICE CITY HALL - SEVENTH FLOOR 455 NORTH MAIN STREET WICHITA, KANSAS 67202-1620 (316) 268-4501		

BY	
DATE	
DESCRIPTION	
Academy SPORTS+OUTDOORS	
Civil Engineering Inc. Bentonville • Kansas City	
CITY OF WICHITA DETAILS A NEW FACILITY FOR: ACADEMY SPORTS + OUTDOORS N. MAIZE ROAD & W. CENTRAL PARK STREET WICHITA, KANSAS	
DRAWN BY:	JON
APPR. BY:	SL
DWG. NAME:	10-1003 Detail CSE
DATE:	01/21/2012
JOB NO.:	10-1003
SHEET NO.:	6.8

AS BUILT PLANS
 CONTRACTOR: UTILITIES PLUS
 INSPECTOR: RANDY VOTH, C.E.D.
 PDF BY: C.C., 9-12-2012

Notes For All Services - 3" thru 12":

- When the standard vault dimensions are not applicable, such as when additional space is required for special pipe, fittings, additional meters, etc. the design engineer shall design a vault with the required dimensions for Public Works and Utilities approval.
- The vault shall be poured concrete, cement blocks (voids to be completely filled with 2500 P.S.I. concrete), or approved precast structure (such as Clutter Inc. vaults approved 6/1/2000). The intent of these details shall not be limited by drawings or standards of precast structures.
- Vault location to be determined by Public Works and Utilities prior to construction and approved by Department's field supervisor prior to installation. A final inspection will be required for acceptance. Vault location standards include but not limited to: not to be located where subjected to vehicular loads, not to be located in any right-of-way or utility easement, and must be located on the property being served.
- The manhole ring and lid shall be Neenah R-6034 Frame with Type "C" Solid Lid and Drop Down Handle or US Foundry APS-30x30 (Aluminum). Where applicable the standard 10" Public Works and Utilities pattern meter reading lid and ring shall be located directly above water meter register. All meter registers shall have an approved lid directly vertical above. All joints of concrete to concrete or metal to concrete in the construction of the vault shall have an approved water tight mastic joint seal.
- Any fittings or appurtenances required to achieve proper elevation of pipe through the vault shall be provided by the contractor and appropriately noted on as-builts submitted by the inspecting engineer. Such fittings shall be a minimum of 2' from the exterior wall of vault.
- For all domestic services larger than 3" the contractor shall provide an outlet flange connection as shown 8" from the inside wall. Inlet and outlet wall sleeves shall be provided and installed by the contractor and shall be in alignment with one another. The inlet and outlet pipe shall be ductile iron pipe, cement lined, Class 150 per Standard Specifications and shall be continuous through vault wall and joint no less than 2' from the exterior wall of vault. Flanges of inlet and outlet pipes shall be in proper alignment and bolt pattern shall be rotated in such a way that valves and other fittings shall be in their proper vertical alignment when installed.
- For all services 4" and larger the contractor shall install a mego lug, restrained joint, or approved equal on the exterior walls of the vault, which shall be manufactured of ductile iron conforming to ASTM A 536-80, heat treated to a minimum hardness of 370 BHN and have a working pressure of at least 250 P.S.I. For all services smaller than 4" the contractor shall install an approved vault clamp on the exterior walls of the vault.
- All valves, meters, assemblies, and fittings shall be provided with sufficient concrete or other approved supports to the vault floor.
- The "Confined Space Warning" sign shall be fastened to the top of all vaults. If necessary for landscaping or site considerations, the sign may be fastened to the vault lid if it does not impede access to the handle. Acceptable materials: Aluminum 73415HH, Plastic 73439HH, or S.A. Vinyl 73463HH.
- All meters shall have an electronic read register compatible with the current City of Wichita meter reading system. All detector meters shall be an 5/8 cubic foot Badger meter with ERT register or approved equal. Gallon meters shall not be accepted.
- Additional Notes For Fire Services:
 - A post indicator valve (PIV) is an option for the outlet valve and may be requested by the architect or owner. The PIV is not required by City of Wichita ordinance.
 - When Siamese connections are required by the Wichita Fire Department, refer to the current City Code Section 15.
 - If due to any reason the completed vault retains ground or drainage water in excess of 4" in depth from the floor of the vault, the property owner shall be responsible for providing and installing an appropriate automatic sump pump or approved equal, as well as any other appurtenances required to make such system function as intended.
 - The property owner is responsible for completing an "Application for Private Fire Protection" prior to final acceptance of the project.



3" Domestic Service

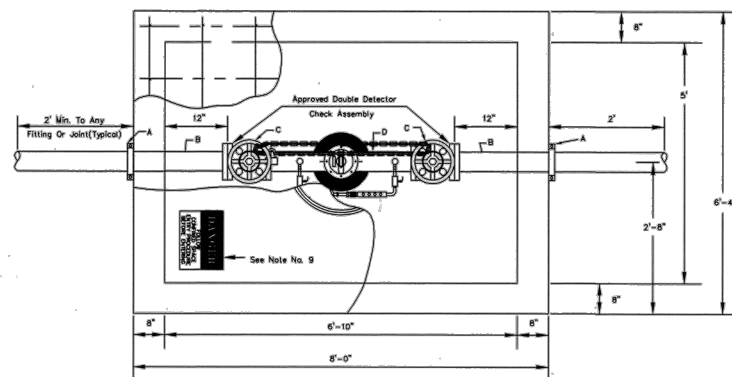
4" Domestic Service

6" Domestic Service with 4" meter

- A - 4" Vault Clamp
- B - Min. 3' Piece of 4" FL x PE DICTL Pipe
- C - 3" Flange Non-rising Stem Gate Wheel Valve
- D - 3" FL x PE Pipe
- E - 3" Flex Coupling
- F - 3" Badger Recordall II Turbo Cubic Foot Meter with ERT Register or Sensus W-350DR Cubic Foot Meter with AMR Register.
- G - 3" x 4" FL Reducer

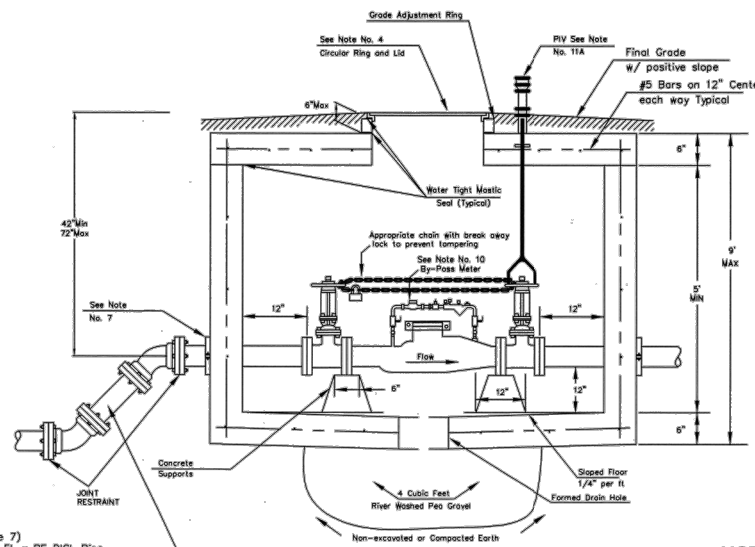
- A - 4" Vault Clamp
- B - Min. 3' Piece of 4" FL x PE DICTL Pipe
- C - 4" Flange Non-rising Stem Gate Wheel Valve
- D - 4" FL x PE Pipe
- E - 4" Flex Coupling
- F - 4" Badger Recordall II Turbo Cubic Foot Meter with ERT Register or Sensus W-1000DR Cubic Foot Meter with AMR Register.
- G - 3" x 4" FL Reducer

- A - 6" Mego Lug (See Note 7)
- B - Min. 3' Piece of 6" FL x PE DICTL Pipe
- C - 4" Flange Non-rising Stem Gate Wheel Valve
- D - 4" FL x PE Pipe
- E - 4" Flex Coupling
- F - 4" Badger Recordall II Turbo Cubic Foot Meter with ERT Register or Sensus W-1000DR Cubic Foot Meter with AMR Register.
- G - 6" x 4" Flange Reducer



- A - Mego Lug (See Note 7)
- B - Min. 3'-8" Piece of FL x PE DICTL Pipe
- C - Flange Gate Valve, Wheel Operated
- D - Ames Model 3001SS or approved equal with metered (cubic foot) by-pass assembly

4" thru 8" Fire Service



Use 45 degree fittings as necessary to keep depth of vault within 76 inch maximum. All fittings should be mego lug, restrained joint or approved equal.

NOTE:
 Domestic Services larger than 6" shall be custom designed by Engineer.

NOTE:
 INSPECTOR FROM PUBLIC WORKS AND UTILITIES TO BE CONTACTED 24 HOURS PRIOR TO INSTALLATION TO SET VAULT.
 CONTACT: 316-219-8928 OR 316-219-8929



STANDARD VAULT DETAILS AND METER ASSEMBLIES

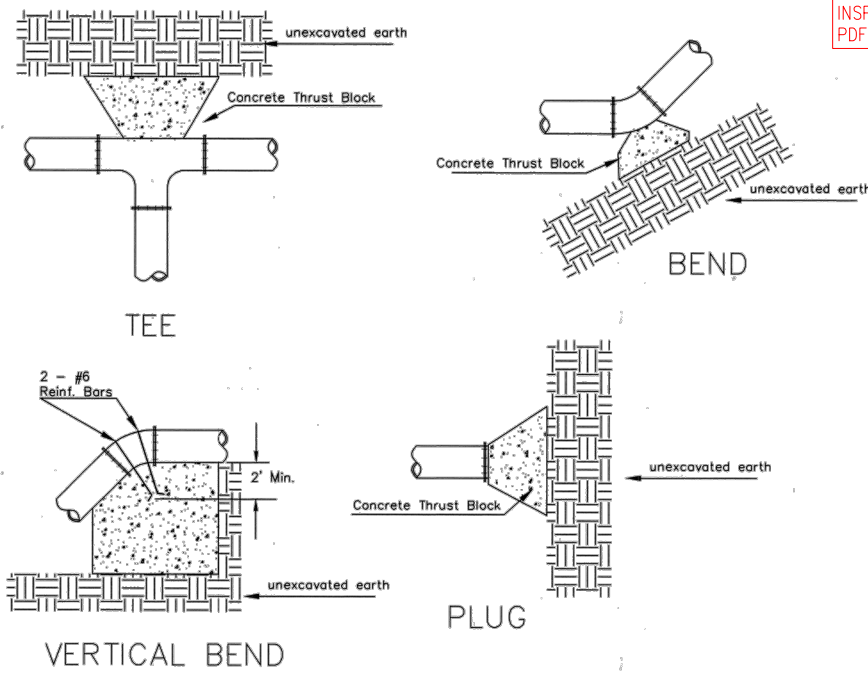
CITY ENGINEER
JAMES L. ARMOUR, P.E., L.S.

PROJECT NUMBER	OCA NUMBER	DATE
		12/2011
CITY ENGINEER'S OFFICE		
CITY HALL - SEVENTH FLOOR		
455 NORTH MAIN STREET		
WICHITA, KANSAS 67202-1620		
(316) 268-4501		

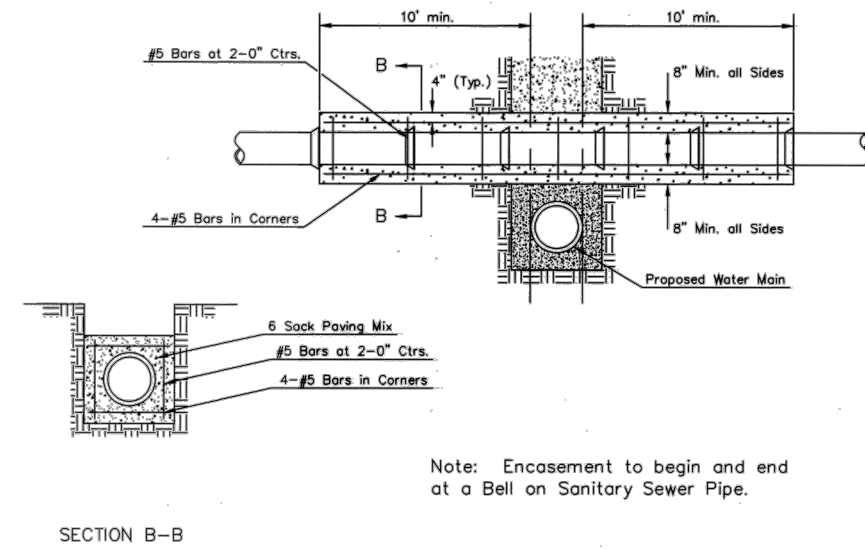
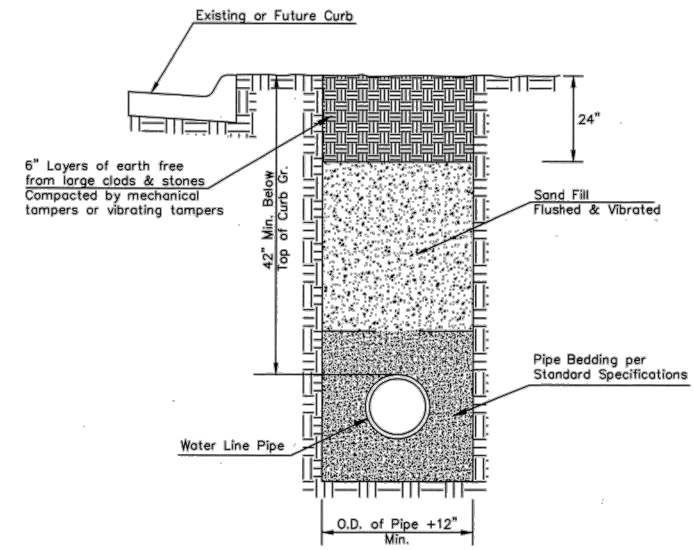
CITY OF WICHITA DETAILS
 A NEW FACILITY FOR:
 ACADEMY SPORTS + OUTDOORS
 N. MAIZE ROAD & W. CENTRAL PARK STREET WICHITA, KANSAS

DRAWN BY: JON
APPV. BY: SM
DWG. NAME: 10-1003 Details-C5H
DATE: 01/31/2012
JOB NO: 10-1003
SHEET NO:
6.9

c:\my box files\projects\10-1003 wchita ks academy sports\dwg\project\constr\10-1003 details\cst.dwg - Plotted on 3/6/2012 10:08:02 AM @ a scale of 1:1 to pdf-xchange 4.0.pcl by Jon Berry



AS BUILT PLANS
 CONTRACTOR: UTILITIES PLUS
 INSPECTOR: RANDY VOTH, C.E.D.
 PDF BY: C.C., 9-12-2012

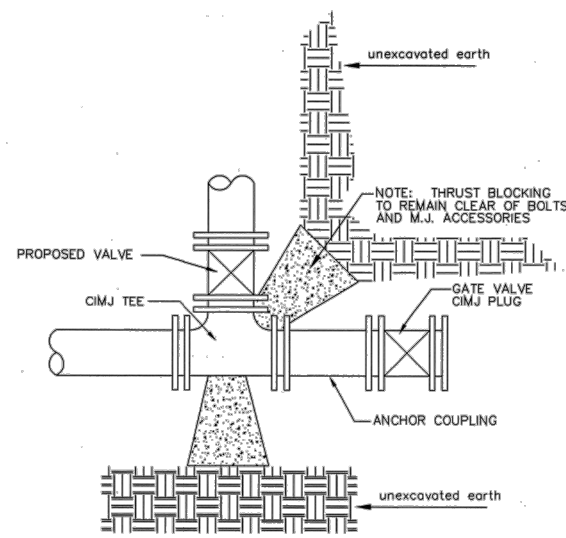


Note: Encasement to begin and end at a Bell on Sanitary Sewer Pipe.

REINFORCED CONCRETE ENCASEMENT OF SANITARY SEWER

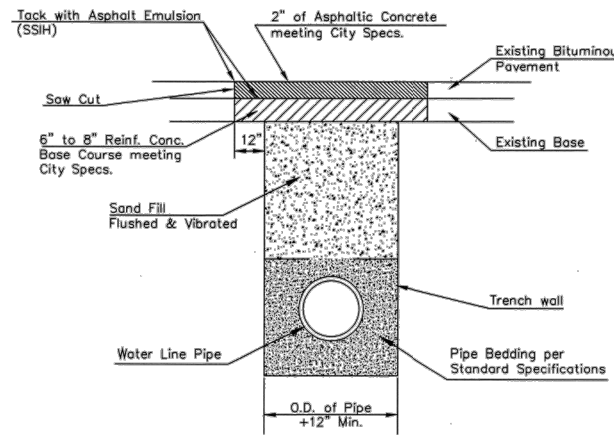
PIPE SIZE	THRUST AT FITTINGS IN TONS-AT 150#/IN ² P					
	PLUG	90°	45°	22 1/2°	11 1/4°	TEE
6"	2.8	3.95	2.15	1.09	.55	2.8
8"	4.9	6.95	3.75	1.90	.96	4.9
12"	11.4	16.1	8.75	4.45	2.25	11.4
16"	20.15	28.5	15.4	7.85	3.95	20.15
20"	31.15	44.0	23.85	12.15	6.10	31.15
24"	44.55	63.0	34.1	17.4	8.75	44.55

TYPICAL THRUST BLOCKS



KEY BLOCK DETAIL

PAVEMENT REPLACEMENT & TRENCH COMPACTION UNDER EXISTING AND PROPOSED CITY ROADS
 * UNLESS OTHERWISE NOTED ON PLANS



DATE	DESCRIPTION

Academy
 SPORTS+OUTDOORS

Civil Engineering Inc.
 Bentonville • Kansas City

CITY OF WICHITA DETAILS
 A NEW FACILITY FOR:
 ACADEMY SPORTS + OUTDOORS
 N. MAIZE ROAD & W. CENTRAL PARK STREET WICHITA KANSAS



MISCELLANEOUS WATER DETAILS			
CITY ENGINEER JAMES L. ARMOUR, P.E., L.S.			
PROJECT NUMBER	OCA NUMBER	DATE	DRAWN BY: JON
		01/2012	APPV. BY: SM
CITY ENGINEER'S OFFICE			DATE: 01/31/2012
CITY HALL - SEVENTH FLOOR			JOB NO: 10-1003
455 NORTH MAIN STREET			SHEET NO: 6.10
WICHITA, KANSAS 67202-1620			
(316) 268-4501			