

Storm Sewer & Drainage Improvements

Mid Continent Airport Addition

Lot 1, Block 2

Private Project Drainage: 0115 PPD (607861)

CITY OF WICHITA, KANSAS

Gary Janzen, P.E. Interim City Engineer

August 2012

AS BUILT PLANS

CONTRACTOR:	McCullough Excavation
INSPECTOR:	Ryan McCullough P.E., McCullough Excavation
PDF BY:	RDM 12-03-2012

Benchmarks

Benchmark-1
 Chiseled on Inlet top in
 ditch near SW corner of site.
 Elev. = 1316.01 (NAVD 88)

Sheet Index

Title Sheet	1
ERU Plan	2
Line 1 Plan/Profile	3
Line 2 Plan/Profile	4
Reference Grading Plan	5
Reference Utility Plan	6
Reference BMP/ERU Plan	7
Details	Available upon request.

Legal Description

A parcel of land in the S.W. ¼ Section 27, Township South, Range 1 West of the 6th P.M. also being part of Lot 1, Block 2 of Mid Continent Airport Addition, Wichita, Sedgwick County, Kansas, more particularly described as beginning at the northwest corner of said Lot 1; thence N82°13'59"E, along the north line of said Lot 1, 66.35 feet to the PC of a curve to the left; thence northeast along said curve to the left on an arc length of 195.37 feet, a radius of 633.113 feet, a chord length of 194.59 feet, and a chord bearing of N73°23'34"E, to a point on the west line of an unrecorded lease "Hangar 32", dated October 4, 2005, as extended north to the north line of said Lot 1; thence S01°30'33"E, along the west line of said unrecorded lease "Hangar 32", dated October 4, 2005, 331.93 feet; thence S88°16'28"W, 253.85 feet to a point on the west line of said Lot 1; thence N01°30'33"W, along the west line of said Lot 1, 274.97 feet to the point of beginning.

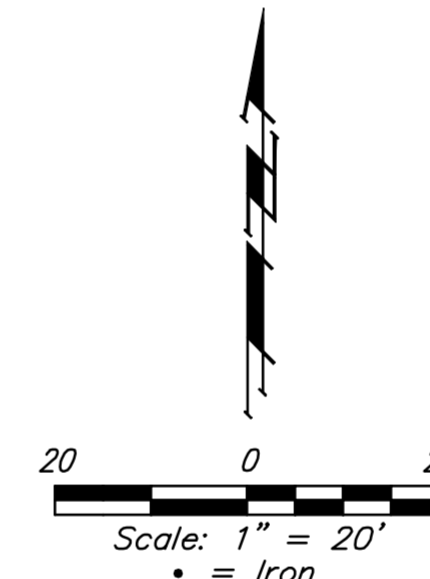
GENERAL NOTES:

- Contractor will be required to provide notice to utility companies a minimum of forty-eight (48) hours prior to any excavation, as follows:

Kansas One-Call	687-2470
-----------------	----------

The Contractor must notify the following in case of an emergency:

Cox Communications	262-4270
Kansas Gas Service	1-888-482-4950
Westar Energy	383-8650
Black Hills Energy (Gas)	1-800-303-0357
ATT	268-2245
City of Wichita Water Dept.	268-4563
City of Wichita Sewer Maint.	268-4024
City of Wichita Storm Sewer Maint.	268-4090
City of Wichita Traffic Maint.	268-4034
- Utility service lines, poles, valve boxes, meters, and etcetera are to be adjusted as necessary by others prior to construction unless the plans specifically call for their adjustment by the Contractor or unless the plans specifically identify a utility to be adjusted by its owner during construction. Existing utilities and their location, as shown on the plans, represent the best information obtainable for design. The Contractor will be required to work around existing utilities within the right-of-way which do not conflict with proposed construction.
- All disturbed R/W areas not intended for pavement or sidewalk construction shall be seeded with Kansas Premium Fescue Blend at a rate of 8 lb./1000 Sq. Ft., fertilized with a 16-20-6 ratio at a rate of 4 lb./1000 Sq. Ft., and mulched with Prairie Hay at a rate of 92 lb./1000 Sq. Ft. Mulch shall be "batted" with forks or punched into soil to reduce loss due to wind.
- Rubble from the removal of miscellaneous structures and excess excavation which is to be wasted shall be disposed of on sites to be provided by the Contractor. These sites shall be approved by the Engineer as to suitability, appearance and site location. Locations, in the opinion of the Engineer, that will leave an unsightly appearance will not be approved. All disposal sites must be approved by the Kansas Department of Health and Environment. Material either stockpiled or disposed of in a flood plain would require a Kansas State Board of Agriculture permit. Any material dumped in waters of the United States or wetlands is subject to U.S. Corps of Engineers permitting regulations. Any material buried or stockpiled beyond approved construction limits would require additional archaeological investigations unless buried in a previously approved borrow location.
- Contractor shall furnish the inspector with a copy of the manufacturer's certification for any pipe used on this project after completion of pipe installation. The engineer will not certify the project to the city until pipe certification has been received.
- Trees and shrubs in public right-of-way which are in direct conflict with proposed new construction shall be removed by the Contractor with the Engineer's approval. Trees and shrubs which are not in direct conflict with proposed new construction shall be saved and protected from damage.
- All sewer lines and appurtenances shall be installed in accordance with the most recent edition of City of Wichita, Kansas Standard Specifications for the Construction of City Projects.
- Contractor shall not start work on the project until the project inspector is assigned to the project and is present at the site. Contractor shall not start on the project until all necessary bonds and permits have been obtained. Bonds may include but are not limited to Statutory, Performance & Maintenance. Any work done without inspection will be required to be uncovered for inspection.
- The Baseline for this project is the Eastern Property Line, of said site with Southeastern Property Iron= Station 20+00. Existing property iron located as shown.

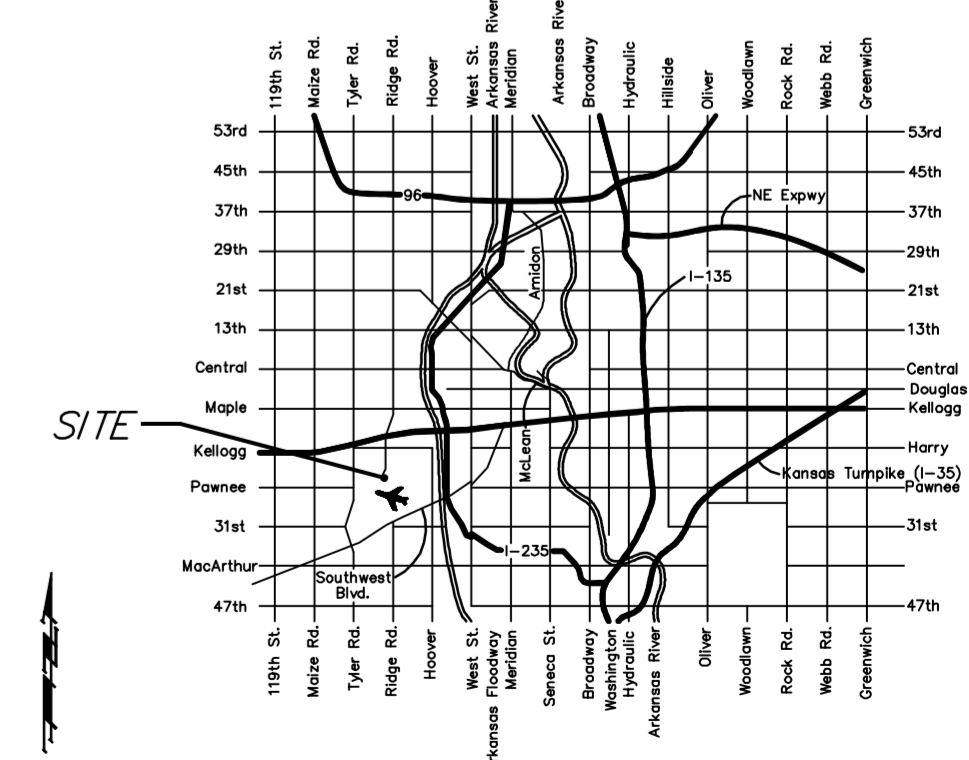
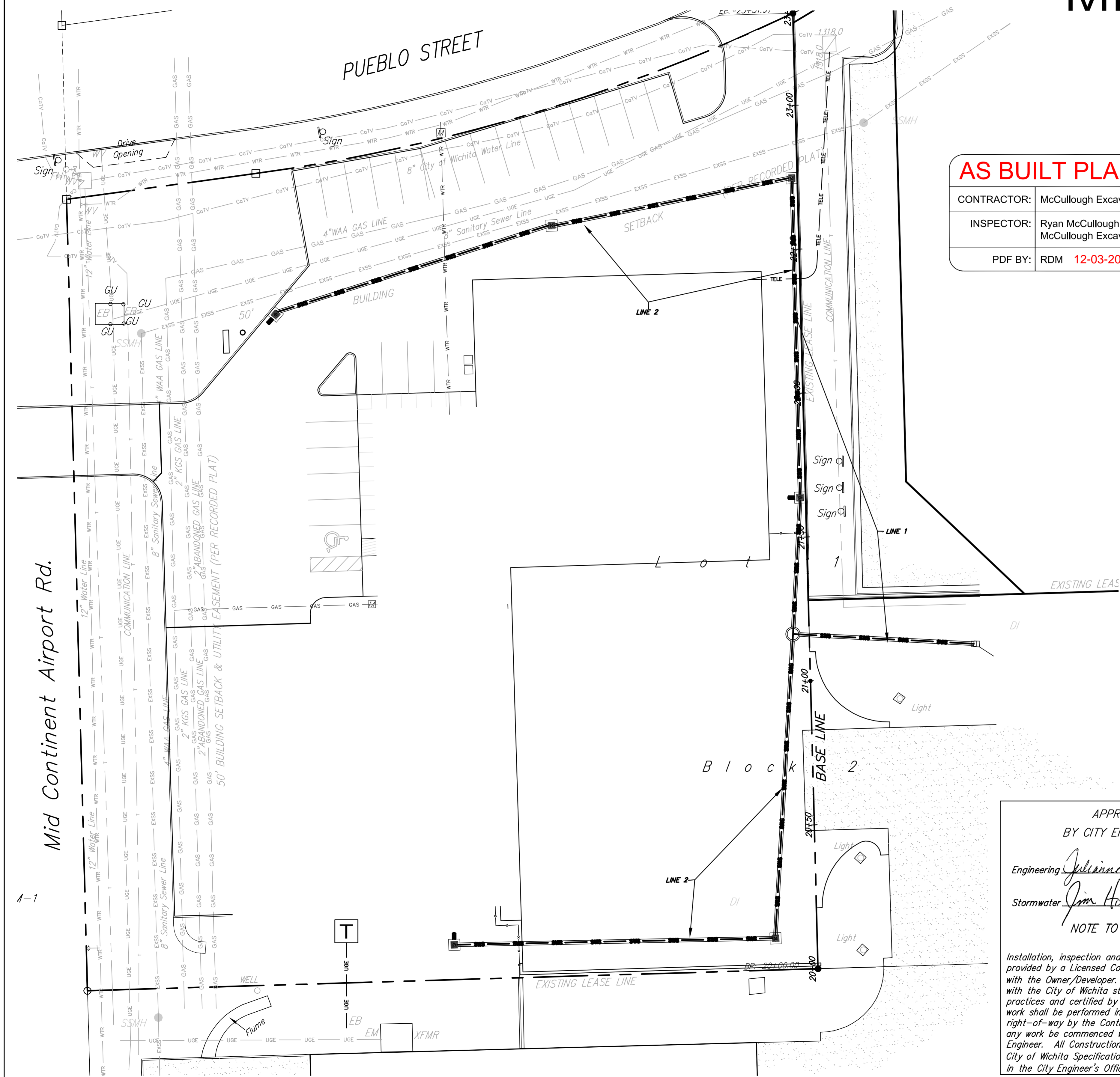


APPROVED AS NOTED
 BY CITY ENGINEER OF WICHITA

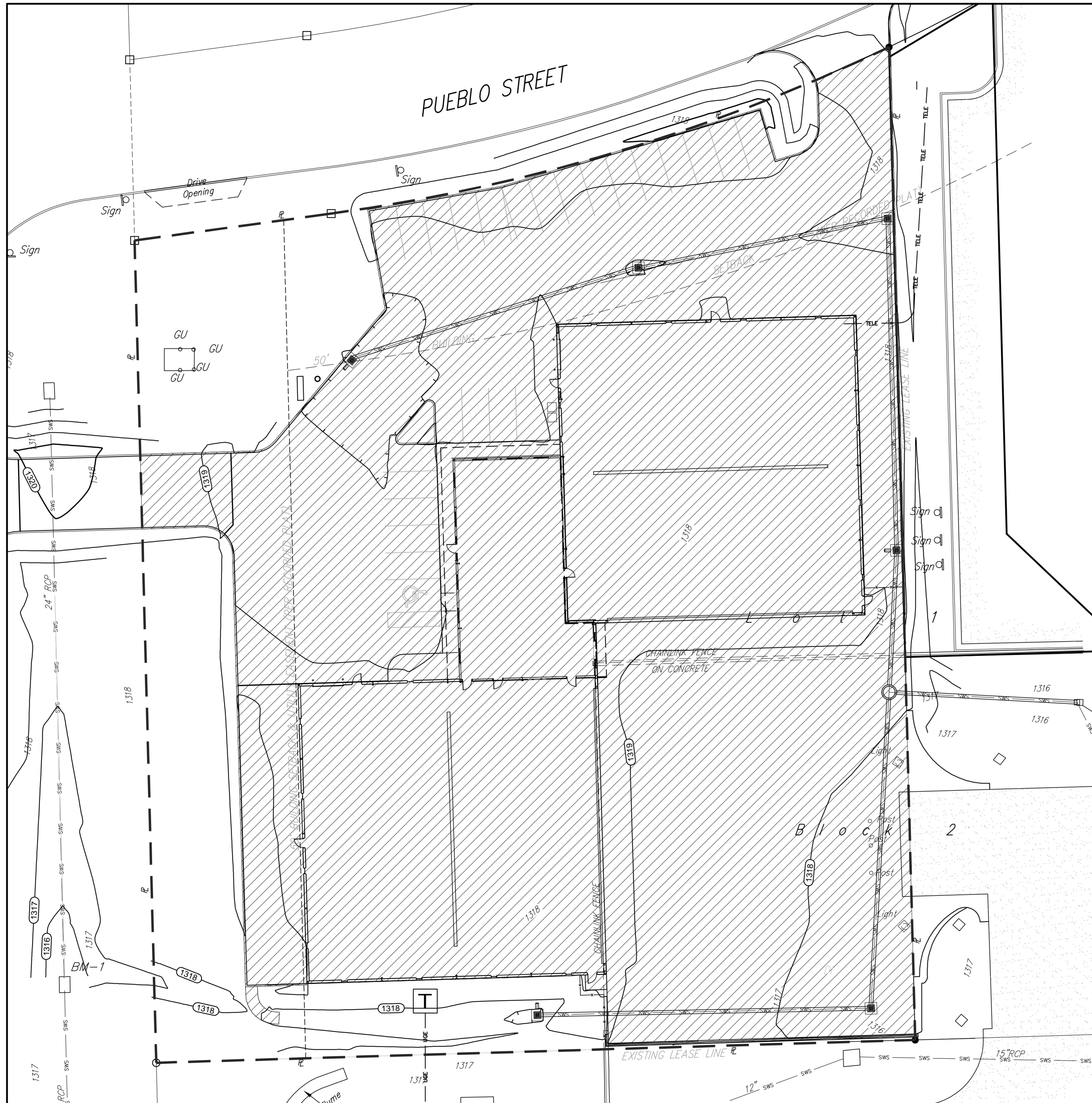
Engineering *Julianne Kallman* 8-23-12
 Stormwater *Jim Humberg* 8-23-12

NOTE TO CONTRACTORS

Installation, inspection and testing for this project is to be provided by a Licensed Consulting Engineering Firm under contract with the Owner/Developer. Said Inspection to be in accordance with the City of Wichita standard construction engineering practices and certified by a Licensed Professional Engineer. No work shall be performed in dedicated easements or public right-of-way by the Contractor without such inspection nor shall any work be commenced without written authorization by the City Engineer. All Construction and Materials shall comply with the City of Wichita Specifications and Standards (on file and available in the City Engineer's Office).



Baughman Company, P.A. 315 Ellis St. Wichita, KS 67211 P 316-262-7271 F 316-262-0154
 ENGINEERING | SURVEYING | PLANNING | LANDSCAPE ARCHITECTURE



ADDED IMPERVIOUS AREA

BENCHMARK

Benchmark-1
 "T" Chiseled on Inlet top in ditch near SW corner of site.
 Elev. = 316.01 (NAVD 88)

LEGAL DESCRIPTION

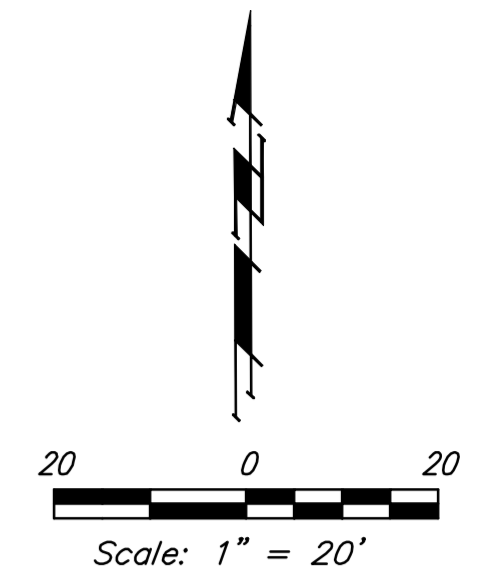
A parcel of land in the S.W. ¼ Section 27, Township South, Range 1 West of the 6th P.M. also being part of Lot 1, Block 2 of Mid Continent Airport Addition, Wichita, Sedgwick County, Kansas, more particularly described as beginning at the northwest corner of said Lot 1; thence N82°13'59"E, along the north line of said Lot 1, 66.35 feet to the PC of a curve to the left; thence northeast along said curve to the left an arc length of 195.37 feet, a radius of 633.113 feet, a chord length of 194.59 feet, and a chord bearing of N73°23'34"E, to a point on the west line of an unrecorded lease "Hangar 32", dated October 4, 2005, as extended north to the north line of said Lot 1; thence S01°30'33"E, along the west line of said unrecorded lease "Hangar 32", dated October 4, 2005, 331.93 feet; thence S88°16'28"W, 253.83 feet to a point on the west line of said Lot 1; thence N01°30'33"W, along the west line of said Lot 1, 274.97 feet to the point of beginning.

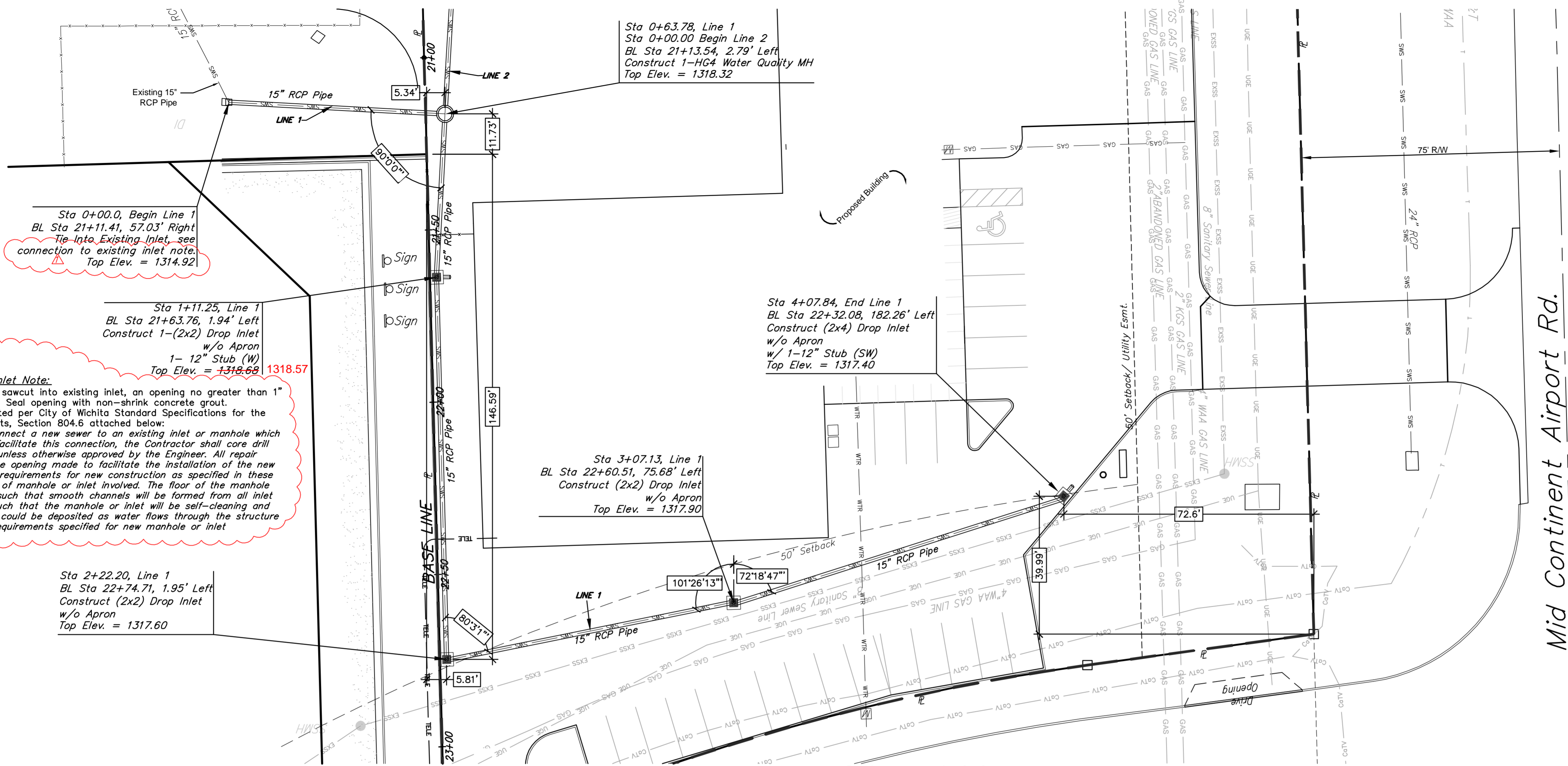
SITE INFORMATION

Total Area:	±75,061 sq. ft. (±1.7 acres)
Disturbed Area:	±75,061 sq. ft. (±1.7 acres)
Impervious Area:	±60,870 sq. ft. (±1.4 acres)
Building Area:	10,000 sq. ft. (Hangar)
	2,863 sq. ft. (Office)
Parking Required:	12 spaces including 1 Accessible (1 per 250 sq. ft. - Office)
Parking Provided:	25 Spaces, including 1 Accessible Stalls

ERU LEGEND

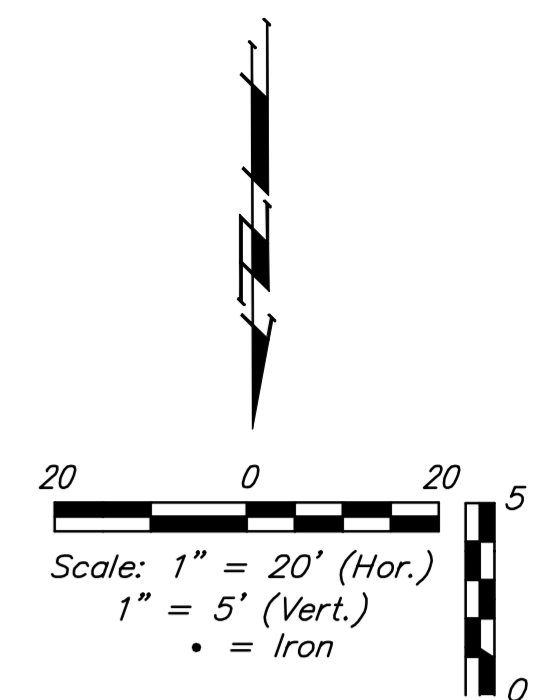
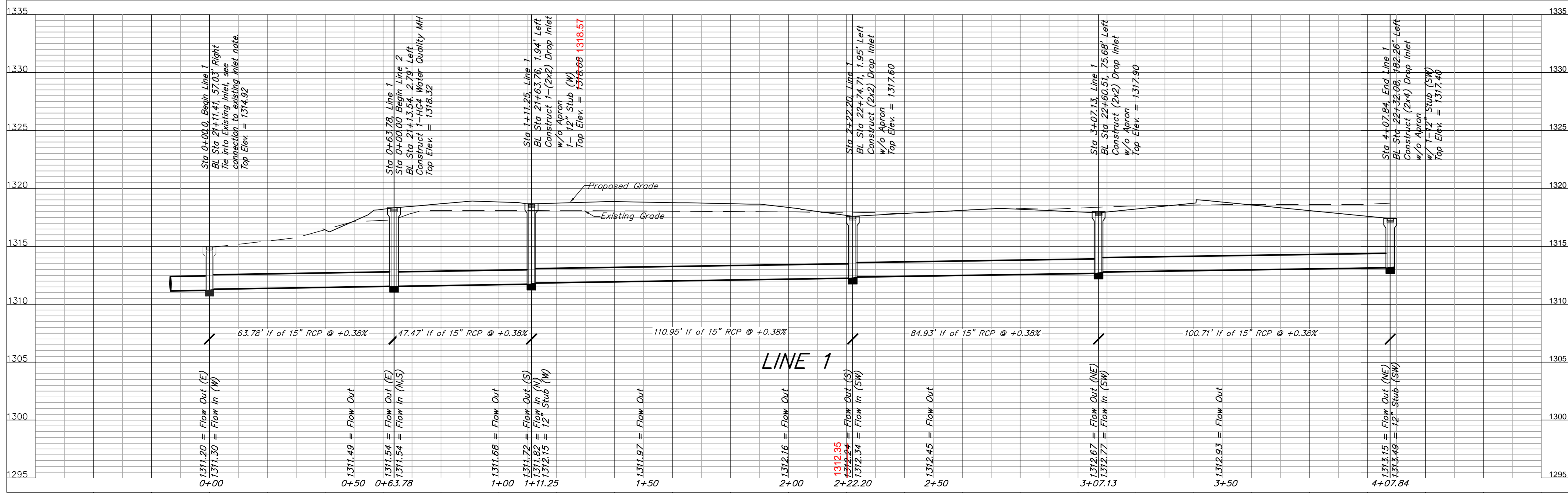
- = Project Limits
- = Impervious Area





Connection to Existing Inlet Note:
 Contractor to core drill or sawcut into existing inlet, an opening no greater than 1" beyond outside wall of rcp. Seal opening with non-shrink concrete grout. Construction to be completed per City of Wichita Standard Specifications for the Construction of City Projects, Section 804.6 attached below:
 When it is necessary to connect a new sewer to an existing inlet or manhole which does not have a stub to facilitate this connection, the Contractor shall core drill into the manhole or inlet unless otherwise approved by the Engineer. All repair work necessary to close the opening made to facilitate the installation of the new pipe shall conform to the requirements for new construction as specified in these specifications for the type of manhole or inlet involved. The floor of the manhole or inlet shall be modified such that smooth channels will be formed from all inlet pipes to the outlet pipe such that the manhole or inlet will be self-cleaning and free of areas where solids could be deposited as water flows through the structure in accordance with such requirements specified for new manhole or inlet construction.

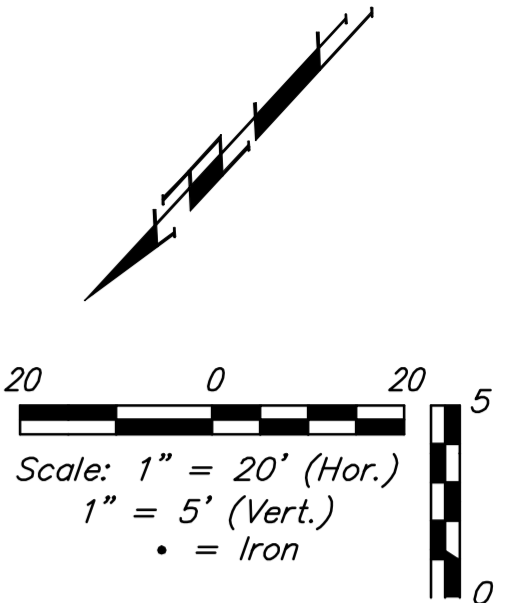
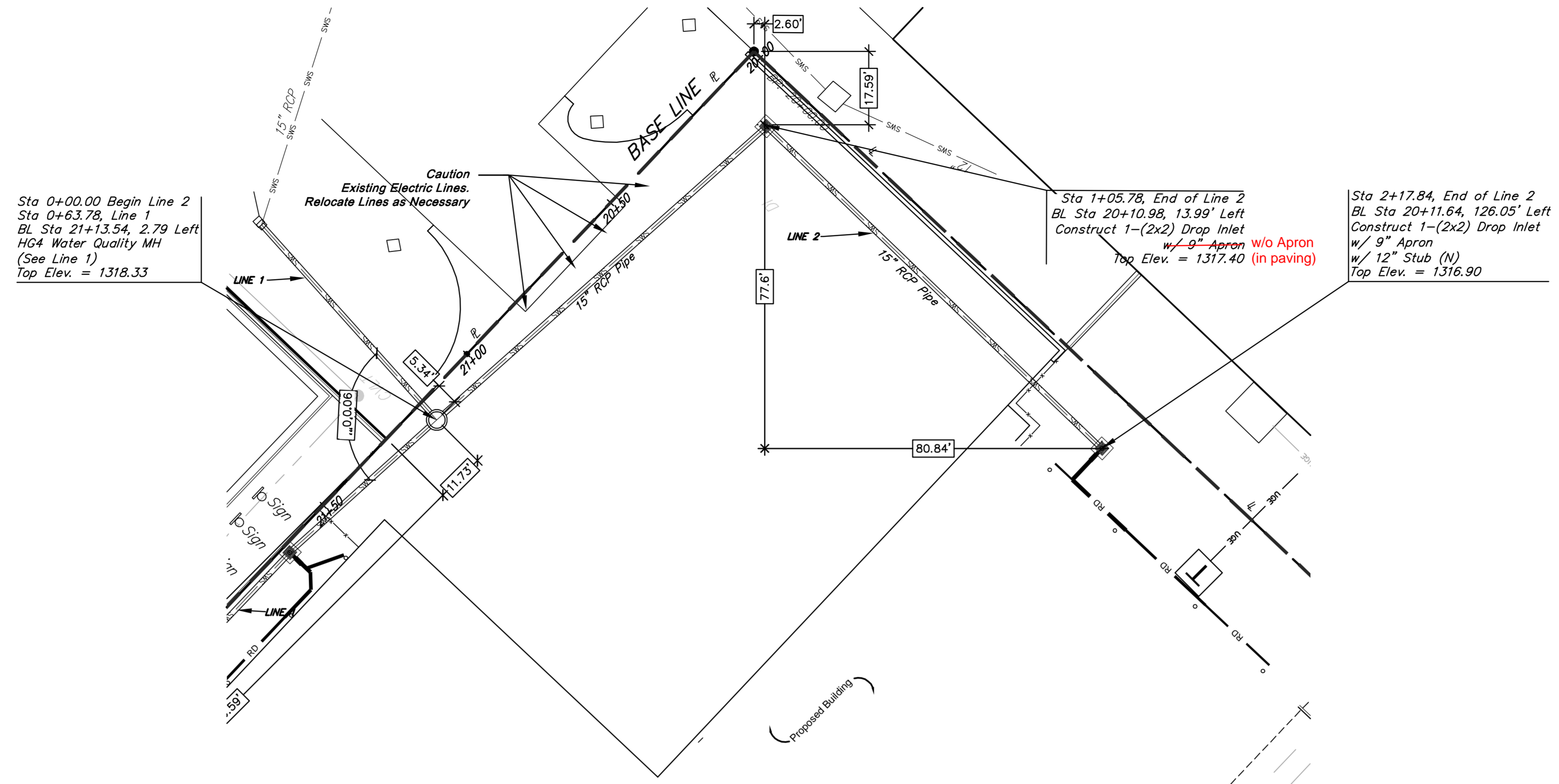
Profile View of SWS Line 1



Benchmarks

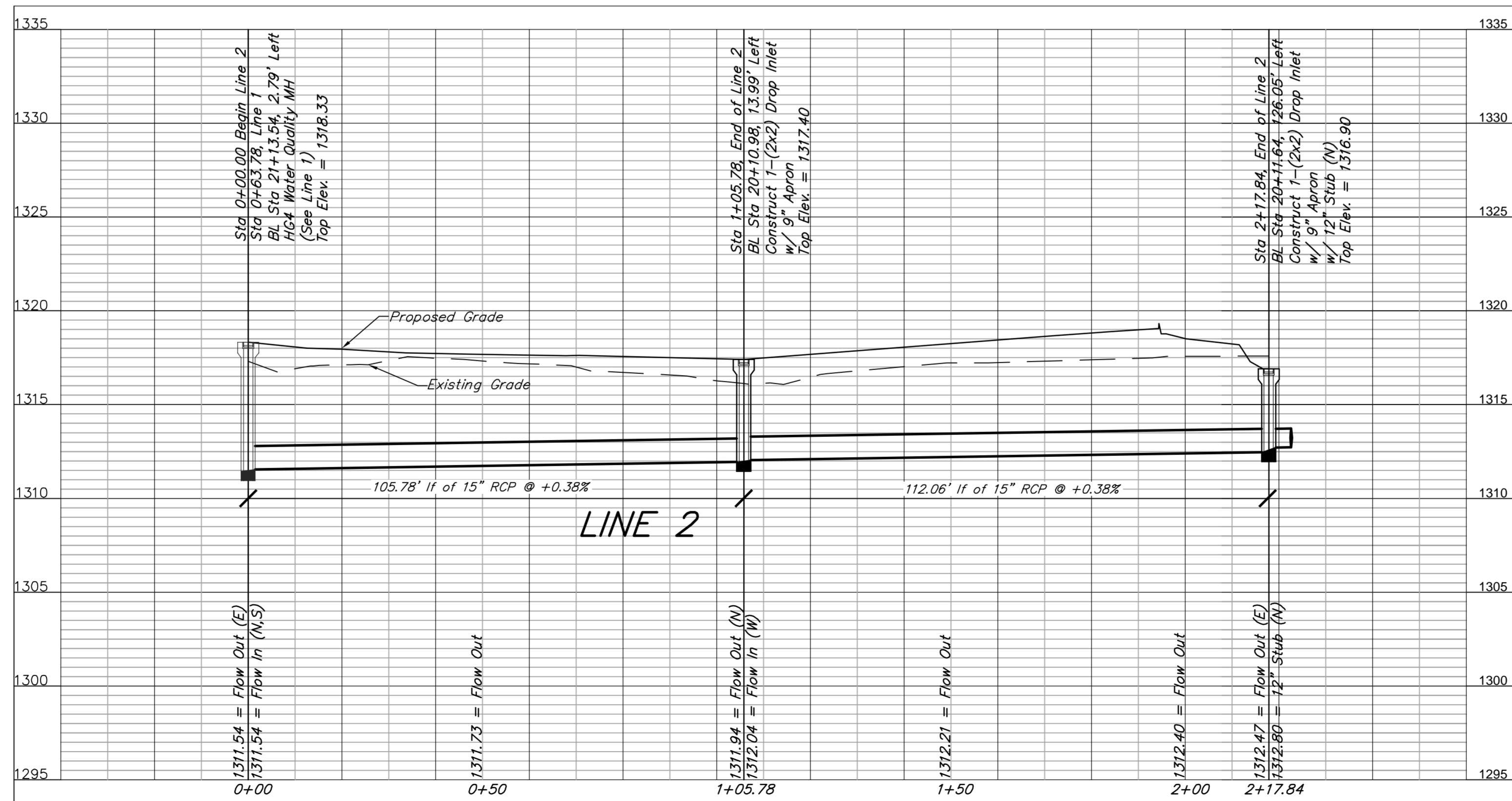
Benchmark-1
 Chiseled on Inlet top in ditch near SW corner of site.
 Elev. = 1316.01 (NAVD 88)





Benchmarks
 Benchmark-1
 Chiseled on Inlet top in ditch near SW corner of site.
 Elev. = 1316.01 (NAVD 88)

Profile View of SWS Line 2



UTILITY LEGEND

Existing Utilities		Proposed Utilities	
— UGE — UGE — UGE — UGE	Electric Underground	— UGE — UGE — UGE — UGE	Electric Underground
— OHE — OHE — OHE — OHE	Electric Overhead	— OHE — OHE — OHE — OHE	Electric Overhead
— WTR — WTR — WTR — WTR	Water Line	— WTR — WTR — WTR — WTR	Water Line
— GAS — GAS — GAS — GAS	Gas Line	— GAS — GAS — GAS — GAS	Gas Line
— PIPELINE — PIPELINE — PIPELINE — PIPELINE	Petroleum Pipeline	— SWS — SWS — SWS — SWS	Storm Water Sewer Pipe (Not Profiled)
— SWS — SWS — SWS — SWS	Storm Water Sewer Pipe	— SWS — SWS — SWS — SWS	Storm Water Sewer Pipe (Profiled)
— EXSS — EXSS — EXSS — EXSS	Sanitary Sewer Line	— RD — RD — RD — RD	Roof Drain
— TELE — TELE — TELE — TELE	Telecommunication (AT&T)	— SS — SS — SS — SS	Sanitary Sewer Line
— CATV — CATV — CATV — CATV	Telecommunication (Cox)	— TELE — TELE — TELE — TELE	Telecommunication (AT&T)
		— CATV — CATV — CATV — CATV	Telecommunication (Cox)

BENCHMARK

Benchmark-1
 ** Chiseled on inlet top in ditch near SW corner of site.
 Elev. = 316.01 (NAVD 88)

LEGAL DESCRIPTION

A parcel of land in the S.W. ¼ Section 27, Township South, Range 1 West of the 6th P.M. also being part of Lot 1, Block 2 of Mid Continent Airport Addition, Wichita, Sedgwick County, Kansas, more particularly described as beginning at the northwest corner of said Lot 1; thence N82°13'59"E, along the north line of said Lot 1, 66.35 feet to the PC of a curve to the left; thence northeast along said curve to the left on an arc length of 195.37 feet, a radius of 633.113 feet, a chord length of 194.59 feet, and a chord bearing of N73°23'34"E, to a point on the west line of an unrecorded lease "Hangar 32", dated October 4, 2005, as extended north to the north line of said Lot 1; thence S01°30'33"E, along the west line of said unrecorded lease "Hangar 32", dated October 4, 2005, 331.93 feet; thence S88°16'28"W, 253.83 feet to a point on the west line of said Lot 1; thence N01°30'33"W, along the west line of said Lot 1, 274.97 feet to the point of beginning.

SITE INFORMATION

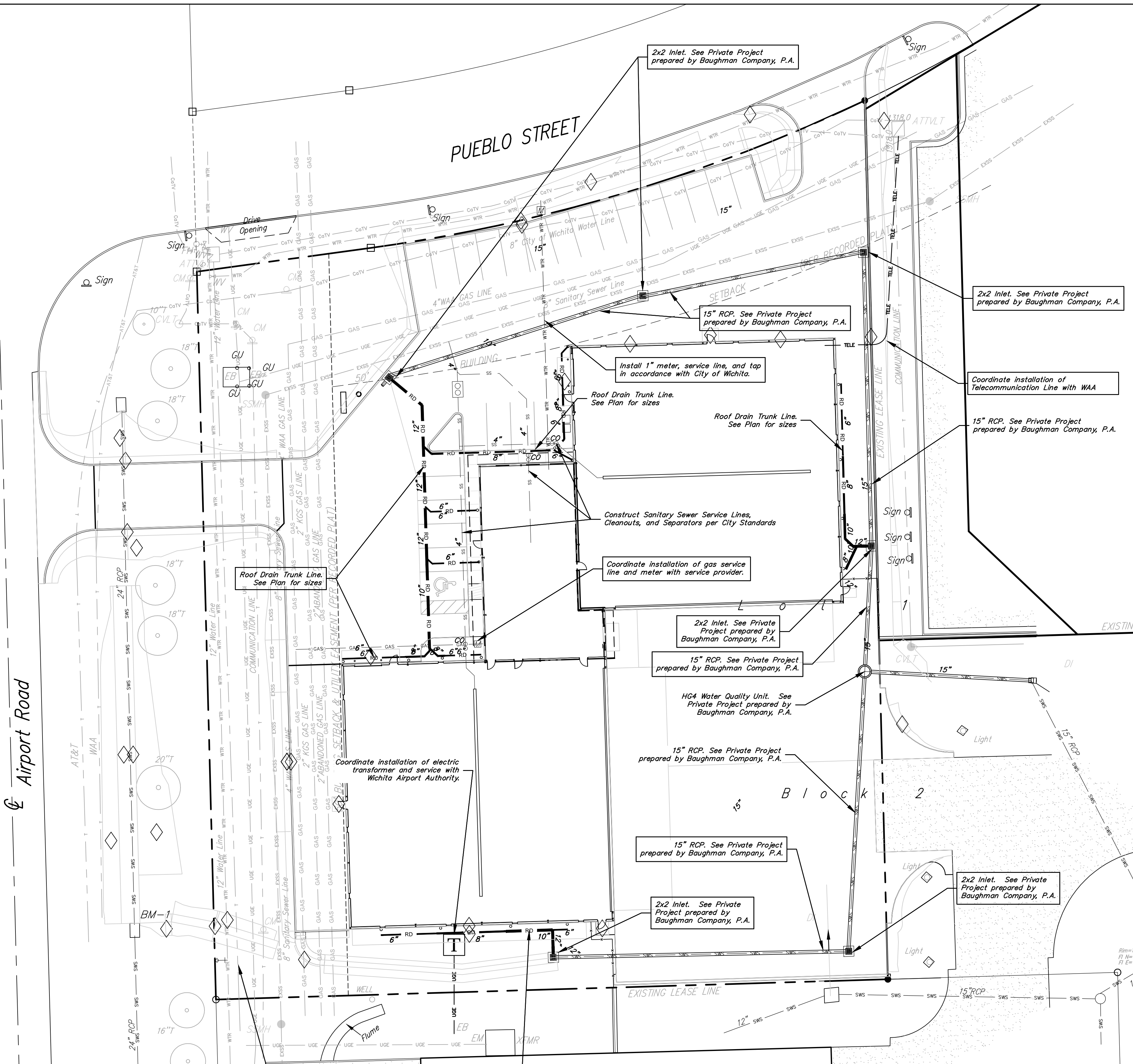
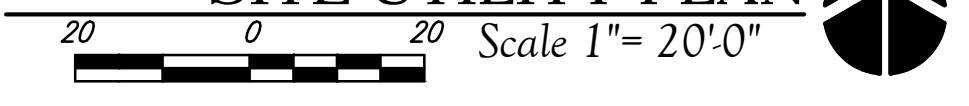
Total Area:	±75,061 sq. ft. (±1.7 acres)
Disturbed Area:	±75,061 sq. ft. (±1.7 acres)
Impervious Area:	±57,681 sq. ft. (±1.3 acres)
Building Area:	10,000 sq. ft. (Hangar)
	2,863 sq. ft. (Office)
Parking Required:	12 spaces including 1 Accessible (1 per 250 sq. ft. - Office)
Parking Provided:	25 Spaces, including 1 Accessible Stalls

UTILITY NOTES

- Contractor shall be required to provide notice to Kansas One Call at 687-2470 a minimum of two (2) working days prior to any excavation or work adjacent to utilities.
- The Contractor must notify the following in case of an emergency:
 Kansas Gas Service (Gas).....1-888-482-4950
 Black Hills Energy (Gas).....1-800-303-0357
 Westar Energy (Electric).....383-8650
 Cox Communications (Telecommunication).....262-4270
 AT&T (Telecommunication).....268-2759
 City of Wichita Water Dept. (Water).....268-4563
 or 288-4908
 City of Wichita Sewer Maint.(San. Sewer).....268-4024
 or 262-6000
 City of Wichita Storm Sewer Maint. (Storm Sewer).....268-4090
 City of Wichita Traffic Maint.(Tras. Control).....288-4034
 or 268-4203
 Conoco Pipeline Co. (Petroleum).....1-800-231-2551
 Williams Pipeline Co. (Petroleum).....529-6600
 or 1-800-324-9696
 Phillips Pipeline Co. (Petroleum).....1-800-766-8230
- Existing utilities and their locations, as shown on the plans, represent the best information obtainable for design. Location information has been obtained from the various utility companies and is either from company record drawings or company provided field locations. The Contractor will be required to work around existing utilities which do not conflict with proposed construction.
- Traffic affected by the construction on this project shall be handled in accordance with the latest edition of the Local Manual on Uniform Traffic Control Devices.
- The Contractor shall verify all utility locations prior to construction of this project.
- Proposed Water Main and Fire Hydrants shall be the contractor's responsibility. This portion of the project shall be constructed under "Private Project." The Water Main and Fire Hydrants shall be designed separately, and undergo Local City review and approval. The installation of the Water Main and Fire Hydrants are required to be done by a bonded contractor, inspected and verified. Refer to Separate Water Main and Fire Hydrants Plan Set. The Contractor shall construct the Water Main and Fire Hydrants only from Local City approved plans which will be provided to the General Contractor or can be provided by Baughman Company, P.A.
- Proposed storm water sewer shall be the contractor's responsibility. This portion of the project shall be constructed under "Private Project." The storm sewer system shall be designed separately, and undergo Local City review and approval. The installation of the storm sewer is required to be done by a bonded contractor, inspected and certified. Refer to Separate Sewer and Storm Water Sewer Plan Set. The Contractor shall construct the sewer only from Local City approved plans which will be provided to the General Contractor or can be provided by Baughman Company, P.A.
- Proposed Sanitary Sewer shall be the contractor's responsibility. This portion of the project shall be constructed under "Private Project." The sanitary sewer system shall be designed separately, and undergo Local City review and approval. The installation of the sanitary sewer is required to be done by a bonded contractor, inspected and verified. Refer to Separate Sanitary Sewer Plan Set. The Contractor shall construct the sanitary sewer only from Local City approved plans which will be provided to the General Contractor or can be provided by Baughman Company, P.A.
- The Contractor shall receive written approval from adjacent landowners prior to proceeding with any construction work on landowner's property.
- Gas service tie-ins to new meters shall be per Service Provider Standards and Specifications. Tie-ins are to be above ground at the meter.
- Utility service connections are to be installed per applicable Local City Codes.
- Contractor shall be responsible for coordination of all utility service connections and all permits.
- Water taps to be made by Local City Water Department. Contractor to reimburse City for tapping costs.

For Reference Only
 See Site Plans
 PPD Sh: 5 of 7

SITE UTILITY PLAN



<p>Baughman ENGINEERING SURVEYING PLANNING LANDSCAPE ARCHITECTURE</p>	<p>Mid Continent Airport SITE UTILITY PLAN Lease Corp Hangar Facility</p>	<p>PROJECT NUMBER: BB DESIGN: BB APPROVED: PSB DATE: May 18, 2012 SCALE: 1" = 20' SHEET: 5 OF 7</p>
Baughman Company, P.A. 315 Ellis St. Wichita, KS 67211 P 316-262-7271 F 316-262-0149 E:\Projects\Mid Continent Airport Addition (Lease Corp)		

GRADING LEGEND

Existing Utilities	
— UGE — UGE — UGE — UGE	Electric Underground
— OHE — OHE — OHE — OHE	Electric Overhead
— WTR — WTR — WTR — WTR	Water Line
— GAS — GAS — GAS — GAS	Gas Line
— PIPELINE — PIPELINE — PIPELINE — PIPELINE	Petroleum Pipeline
— SWS — SWS — SWS — SWS	Storm Water Sewer Pipe
— EXSS — EXSS — EXSS — EXSS	Sanitary Sewer Line
— TELE — TELE — TELE — TELE	Telecommunication (AT&T)
— CoTV — CoTV — CoTV — CoTV	Telecommunication (Cox)
Proposed Utilities	
— UGE — UGE — UGE — UGE	Electric Underground
— OHE — OHE — OHE — OHE	Electric Overhead
— WTR — WTR — WTR — WTR	Water Line
— Fire — Fire — Fire — Fire	Fire Line
— GAS — GAS — GAS — GAS	Gas Line
— SWS — SWS — SWS — SWS	Storm Water Sewer Pipe (Not Profiled)
— SWS — SWS — SWS — SWS	Storm Water Sewer Pipe (Profiled)
— RD — RD — RD — RD	Roof Drain
— SWS — SWS — SWS — SWS	Sanitary Sewer Line
— TELE — TELE — TELE — TELE	Telecommunication (AT&T)
— CoTV — CoTV — CoTV — CoTV	Telecommunication (Cox)
— 26.22 — 26.22 — 26.22 — 26.22	Curb Grades
— 26.22 — 26.22 — 26.22 — 26.22	Spot Grades

BENCHMARK

Benchmark-1
 * Chiseled on inlet top in ditch near SW corner of site.
 Elev. = 316.01 (NAVD 88)

LEGAL DESCRIPTION

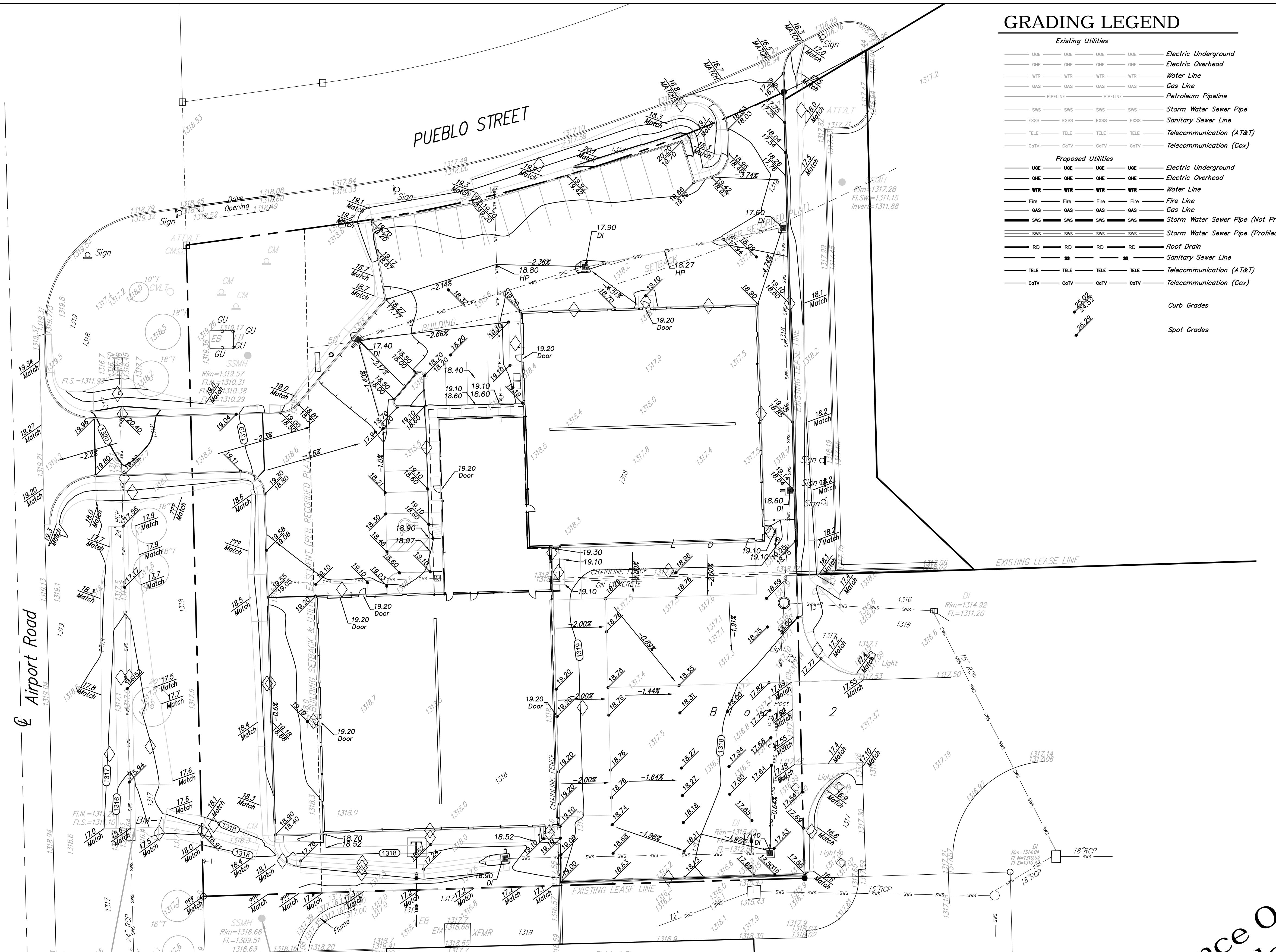
A parcel of land in the S.W. ¼ Section 27, Township South, Range 1 West of the 6th P.M. also being part of Lot 1, Block 2 of Mid Continent Airport Addition, Wichita, Sedgewick County, Kansas, more particularly described as beginning at the northwest corner of said Lot 1; thence N82°13'59"E, along the north line of said Lot 1, 66.35 feet to the PC of a curve to the left; thence northeast along said curve to the left an arc length of 193.37 feet, a radius of 633.113 feet, a chord length of 194.59 feet, and a chord bearing of N73°33'34"E, to a point on the west line of an unrecorded lease "Hangar 32", dated October 4, 2005, as extended north to the north line of said Lot 1; thence S01°30'33"E, along the west line of said unrecorded lease "Hangar 32", dated October 4, 2005, 331.93 feet; thence S88°16'28"W, 253.83 feet to a point on the west line of said Lot 1; thence N01°30'33"W, along the west line of said Lot 1, 274.97 feet to the point of beginning.

SITE INFORMATION

Total Area:	±75,061 sq. ft. (±1.7 acres)
Disturbed Area:	±75,061 sq. ft. (±1.7 acres)
Impervious Area:	±57,681 sq. ft. (±1.3 acres)
Building Area:	10,000 sq. ft. (Hangar)
	2,863 sq. ft. (Office)
Parking Required:	12 spaces including 1 Accessible (1 per 250 sq. ft. - Office)
Parking Provided:	25 Spaces, including 1 Accessible Stalls

GRADING NOTES

- Contractor shall be required to provide notice to Kansas One Call at 687-2470 a minimum of two (2) working days prior to any excavation or work adjacent to utilities.
- The Contractor must notify the following in case of an emergency:
 Kansas Gas Service (Gas).....1-888-482-4950
 Black Hills Energy (Gas).....1-800-303-0357
 Westar Energy (Electric).....383-8650
 Cox Communications (Telecommunication).....262-4270
 AT&T (Telecommunication).....268-2759
 City of Wichita Water Dept. (Water).....268-4563
 or 268-4908
 City of Wichita Sewer Maint.(San. Sewer).....268-4024
 or 262-6000
 City of Wichita Storm Sewer Maint. (Storm Sewer).....268-4090
 City of Wichita Traffic Maint.(Traf. Control).....268-4034
 or 268-4203
 Canoco Pipeline Co. (Petroleum).....1-800-231-2551
 Williams Pipeline Co. (Petroleum).....529-6600
 or 1-800-324-9696
 Phillips Pipeline Co. (Petroleum).....1-800-766-8230
- Existing utilities and their locations, as shown on the plans, represent the best information obtainable for design. Location information has been obtained from the various utility companies and is either from company record drawings or company provided field locations. The Contractor will be required to work around existing utilities which do not conflict with proposed construction.
- Traffic affected by the construction on this project shall be handled in accordance with the latest edition of the Local Manual on Uniform Traffic Control Devices.
- The Contractor shall verify all utility locations prior to construction of this project.
- Refer to Landscape Plan for Treatment of All Disturbed Areas.
- Signage and striping shall be installed in accordance with Local City Specifications and Codes. Striping shall be painted markings in conformance with the latest edition of the Standard Specifications for State Road and Bridge Construction by the Kansas Department of Transportation.
- Paved Lot to be constructed with Paving as shown. Subgrade to be compacted to 98% Standard Proctor Density and treated with 4 to 6 percent lime or 14 to 16 percent class "C" fly ash. Refer to pavement details to verify depths and Paving type.
- Proposed storm water sewer shall be the contractor's responsibility. This portion of the project shall be constructed under "Private Project." The storm sewer system shall be designed separately, and undergo Local City review and approval. The installation of the storm sewer is required to be done by a bonded contractor, inspected and certified. Refer to Separate Sewer and Storm Water Sewer Plan Set. The Contractor shall construct the sewer only from Local City approved plans which will be provided to the General Contractor or can be provided by Baughman Company, P.A.
- The Contractor shall notify adjacent landowners prior to proceeding with any construction work on landowner's property.
- Cross-Slopes on sidewalks around building shall not exceed 1/4" per foot (or 2%). Notify Landscape Architect of any discrepancies prior to forming of walks.



SITE GRADING PLAN

Scale 1" = 20'0"

For Reference Only
 See Site Plans
 PPD Sh: 6 of 7

Mid Continent Airport Addition SITE GRADING PLAN (Reference) Lease Corp. Hangar Facility	
Baughman Company, P.A. 315 Ellis St. Wichita, KS 67211 P 316-262-7271 F 316-262-0149 ENGINEERING - SURVEYING - PLANNING - LANDSCAPE ARCHITECTURE	
PROJECT NUMBER	DESIGN BB DRAWN BB
REVISIONS:	APPROVED NBW DATE June 6, 2012
	SCALE 1"=20' SHEET 6 OF 7
E:\Projects\Mid Continent Airport Addition (Lease Corp) 12-05-E763	

BENCHMARK

Benchmark-1
 * Chiseled on inlet top in ditch near SW corner of site.
 Elev. = 316.01 (NAVD 88)

LEGAL DESCRIPTION

A parcel of land in the S.W. ¼ Section 27, Township South, Range 1 West of the 6th P.M., also being part of Lot 1, Block 2 of Mid Continent Airport Addition, Wichita, Sedgewick County, Kansas, more particularly described as beginning at the northwest corner of said Lot 1; thence N82°13'59"E, along the north line of said Lot 1, 66.35 feet to the PC of a curve to the left; thence northeast along said curve to the left on an arc length of 195.37 feet, a radius of 633.113 feet, a chord length of 194.59 feet, and a chord bearing of N73°23'34"E, to a point on the west line of an unrecorded lease "Hangar 32", dated October 4, 2005, as extended north to the north line of said Lot 1; thence S01°30'33"W, along the west line of said unrecorded lease "Hangar 32", dated October 4, 2005, 331.93 feet; thence S88°16'28"W, 253.83 feet to a point on the west line of said Lot 1; thence N01°30'33"W, along the west line of said Lot 1, 274.97 feet to the point of beginning.





SITE INFORMATION

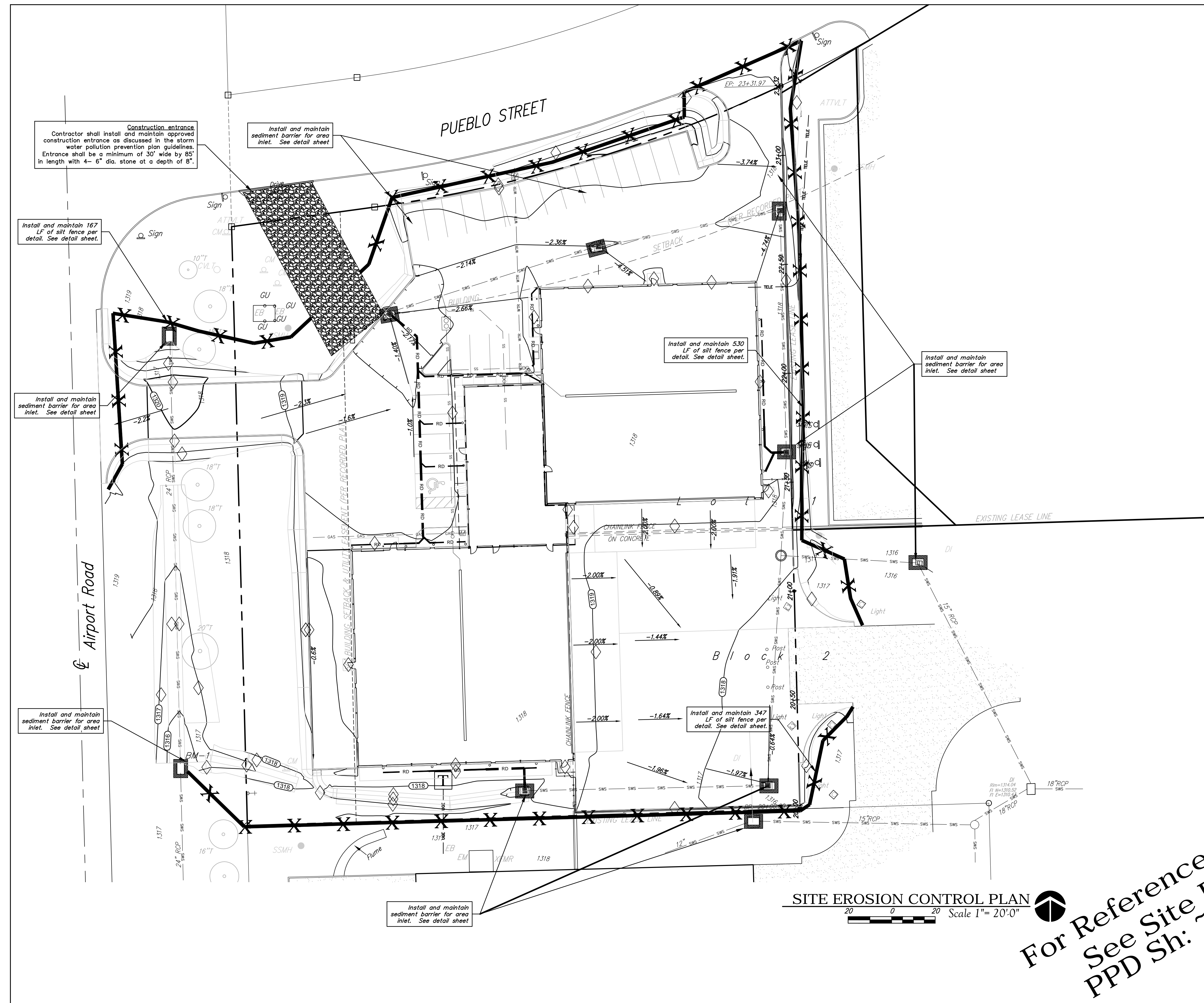
Total Area: ±75,061 sq. ft. (±1.7 acres)
 Disturbed Area: ±75,061 sq. ft. (±1.7 acres)
 Impervious Area: ±57,681 sq. ft. (±1.3 acres)
 Building Area: 10,000 sq. ft. (Hangar)
 2,863 sq. ft. (Office)
 Parking Required: 12 spaces including 1 Accessible
 (1 per 250 sq. ft. - Office)
 Parking Provided: 25 Spaces, including 1 Accessible Stalls

EROSION CONTROL NOTES

- No land clearing or grading shall begin until all applicable erosion control measures have been installed. This project is subject to this SWPP Plan. The Contractor shall comply with any unusual requirements as necessary for the site to be in compliance during construction, per this plan and City specs (See #11).
- All exposed areas shall be seeded and all permanent erosion control measures installed immediately after final GRADING.
- Should construction stops for longer than 14 days, the site temporary stabilization is to be installed immediately and established with 21 days.
- Maintain erosion control measures after each rain and at least once a week.
- This plan shall not be considered all inclusive as the contractor shall take all necessary precautions to prevent soil sediment from leaving the site.
- Contractor shall comply with all state and local ordinances that apply.
- Additional erosion and sediment control measures will be installed if deemed necessary by on site inspection.
- Land disturbing activities shall not commence until approval to do so has been received by governing authorities.
- If installation of storm drainage system should be interrupted by weather or nightfall, the pipe ends shall be covered with filter fabric.
- See Landscape Plan for ground treatments in all disturbed areas beyond impervious surfaces.
- This SWPP Plan should be in job trailer and/or on site at all times. The Contractor is responsible for any needed changes, updates or maintenance to BMP's on site. This plan may change and updates need to be recorded and documented on the plan. This plan is a flexible plan, due to changing site conditions and weather. Please inform Landscape Architect and/or Engineer of changes to plan.
- ANY substitutions for the sediment control devices shown, must be approved by the Landscape Architect and/or Engineer prior to any uses on site.
- An NPDES Permit Application has been submitted for this property. A copy of this application must be kept at the job site for the duration of the construction process.

EROSION CONTROL LEGEND

-  = Silt Fence
-  = Curb Inlet Sediment Barrier
-  = Area Inlet Sediment Barrier
-  = Area Inlet Sediment Barrier



SITE EROSION CONTROL PLAN

Scale 1" = 20' 0"

For Reference Only
 See Site Plans
 PPD Sh: 7 of 7

 Mid Continent Airport SITE EROSION CONTROL PLAN Lease Corp Hangar Facility	
Baughman Company, P.A. 315 Ellis St. Wichita, KS 67211 P 316-262-7271 F 316-262-0149 ENGINEERING - SURVEYING - PLANNING - LANDSCAPE ARCHITECTURE	
PROJECT NUMBER	DESIGN BB DRAWN BB
REVISIONS:	APPROVED PBS DATE May 18, 2012
	SCALE 1" = 20'
	SHEET 7 OF 7
E:\Projects\Mid Continent Airport Addition (Lease Corp) 20120518.dwg	