

(S) 8" Clow - V45468  
11.2'W & 28.2'N of E of  
Mary's Dr & McCormick

35+72, 30' Lt  
ML No. 1, BL Sta. 35+77.28, 20' Lt =  
ML No. 1, Sta. 26+51.60  
1 - 8" DI CL MJ Tee  
1 - 8" Valve Assembly (S)  
Top of Valve Box = Match Existing  
13' - 8" DI CL Pipe (S)  
1 - 8" 90° DI CL MJ Band (Rotated)  
5' - 8" DI CL Pipe (W)  
1 - 8" 90° DI CL MJ Band (Rotated)  
Connect to Existing 8" PVC Pipe (S)  
1 - 8" MJ Cap (N)

36+75, 32' Lt  
ML No. 1, BL Sta. 36+68.58, 20' Lt =  
ML No. 1, Sta. 27+42.90  
1 - 2" Service Outlet Assembly (N) (ND) 2" Clow - V45469  
12.00' - 2" Pipe (N)  
1 - 2" 90° Band (Rotated)  
5.00' - 2" Pipe (E) (W)  
1 - 2" 90° Band (Rotated)  
Connect to Existing 2" PVC (N)  
1 - 2" Cap (S)

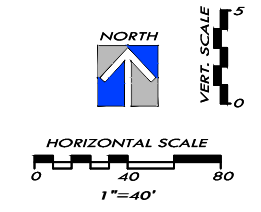
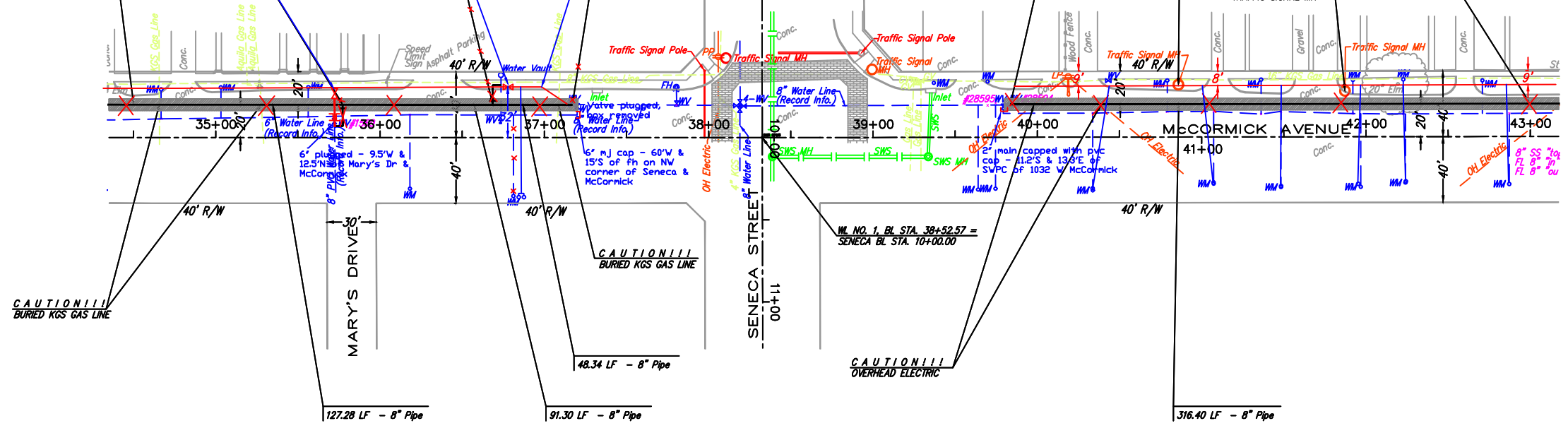
37+19, 32' Lt  
ML No. 1, BL Sta. 37+16.02, 20' Lt =  
ML No. 1, Sta. 27+91.24  
Existing Water Line  
Remove Existing 2" Blowoff Assembly  
Connect to Existing 8" Pipe  
Provide Couplers and Adapters as Required  
1 - 6" MJ Plug (S) in Existing Valve

6.5 LF - 8" CI CL pipe  
8"-45° bend, mega lugged  
16.1 LF - 8" pvc  
8"-45° bend, mega lugged

40+04, 32' Lt  
ML No. 1, BL Sta. 39+83.60, 20' Lt =  
ML No. 1, Sta. 30+57.93  
Existing Water Line  
Remove Existing 8" Cap  
Connect to Existing 8" Pipe  
Provide Couplers and Adapters as Required  
1 - 2" IPT Plug in Existing Valve (S)

ML No. 1, BL Sta. 43+00, 20' Lt =  
ML No. 1, Sta. 33+74.32  
Match Line, See Sheet 8 for Continuation

ML No. 1, BL Sta. 34+50, 20' Lt =  
ML No. 1, Sta. 25+24.32  
Match Line, See Sheet 6 for Continuation

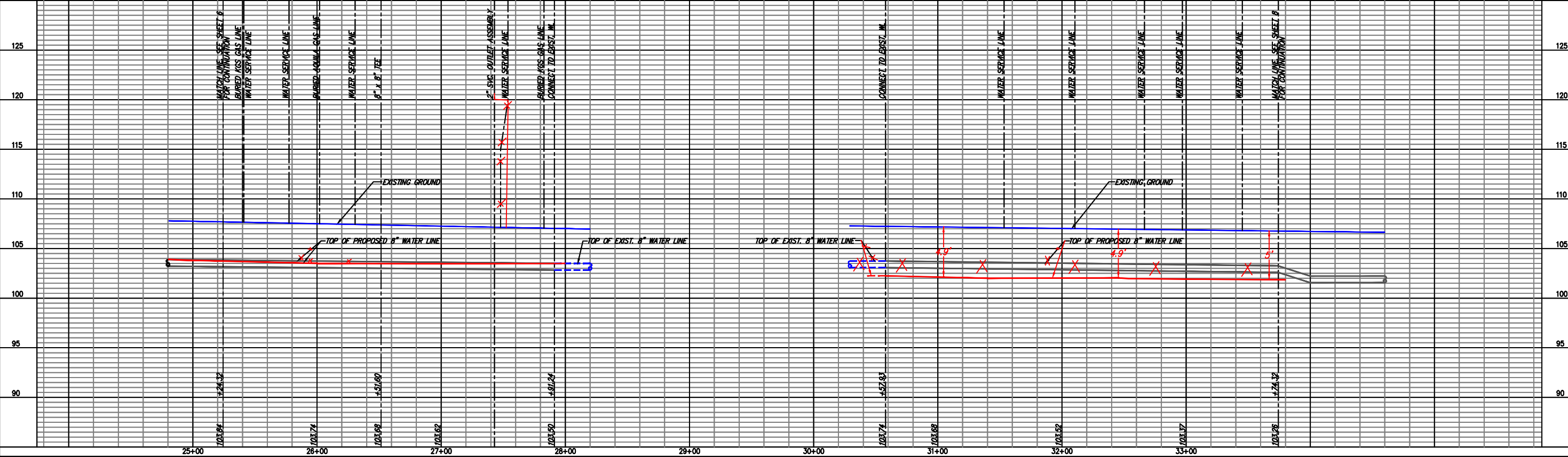


- LEGEND**
- PP UTILITY POLE
  - LP LIGHT POLE
  - DM DEAD MAN
  - WM WATER METER
  - WV WATER VALVE
  - GV GAS VALVE
  - SS MH SANITARY SEWER MANHOLE
  - SWS MH STORM SEWER MANHOLE

- NOTES:**
- UNLESS OTHERWISE INDICATED, DIMENSIONS ARE MEASURED TO CENTERLINE OF FITTINGS IN PLAN VIEW AND TOP OF PIPE IN PROFILE VIEW.
  - WL NO. 1 BASELINE = CENTERLINE OF MCCORMICK AVENUE RIGHT-OF-WAY.
  - REFER TO SHEET 2, NOTE NO. 8, FOR DIRECTIONAL DRILLING REQUIREMENTS.

**AS-BUILT**  
WATER LINE NO. 1

REMOVE & REPLACE CONCRETE PAVEMENT IN KIND, THIS SHEET = 590 LF



**WATER LINE NO. 1**  
PLAN AND PROFILE

PROJECT NO.	DATE	BY	APP.
06-228	2-15-07	DAS	DAS
		DESIGNED: DAS	CHECKED: CRT
			APPROVED:

**YOUNG & ASSOCIATES, P.A.**  
Civil and Environmental Engineers  
100 S. Geologie, Derby, KS 67037  
Tele: (316) 788-2552 • Fax: (316) 788-4408 • email: young@yemaha.com

Copyright 2007 by Young & Associates, P.A. All rights reserved. This drawing is the property of Young & Associates, P.A. and may not be reproduced in any form without the prior written permission of Young & Associates, P.A. The delivery of this drawing does not constitute a contract.

McCormick Ave Water Line Improvement  
City of Wichita, Sedgwick County, Kansas