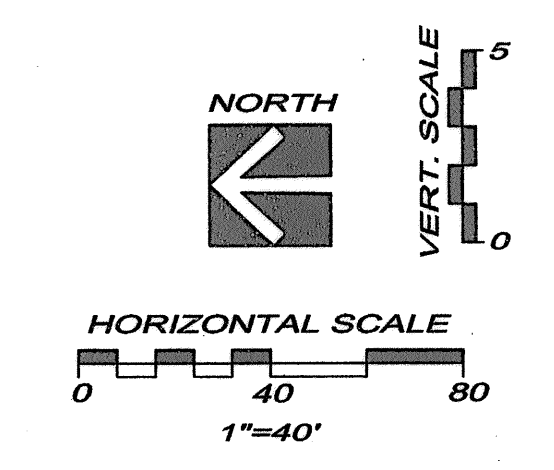
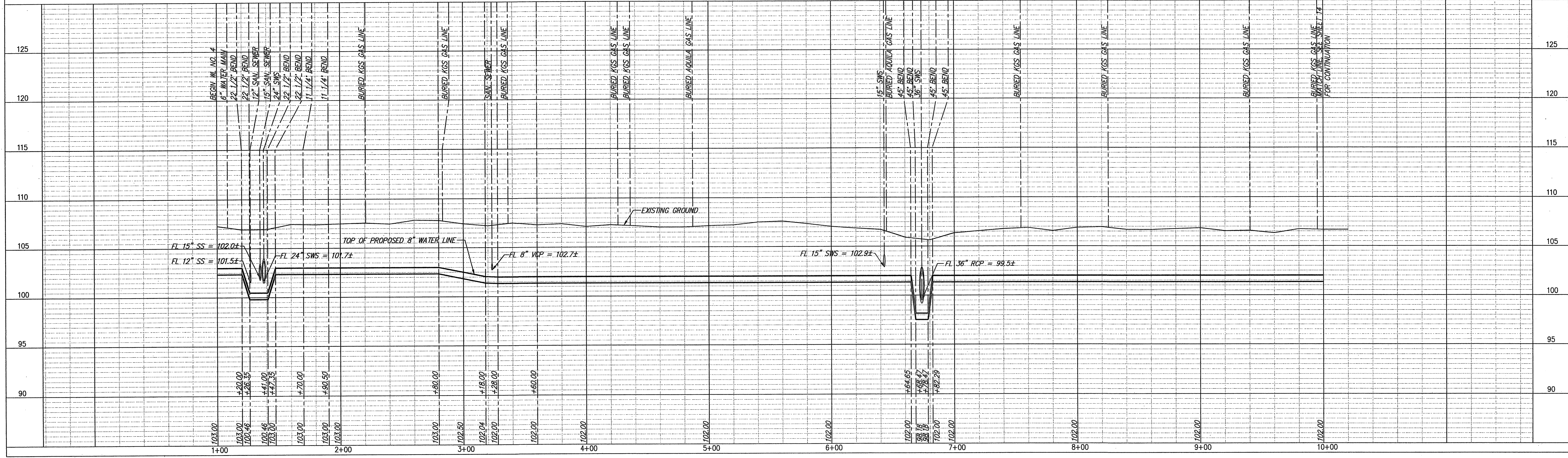


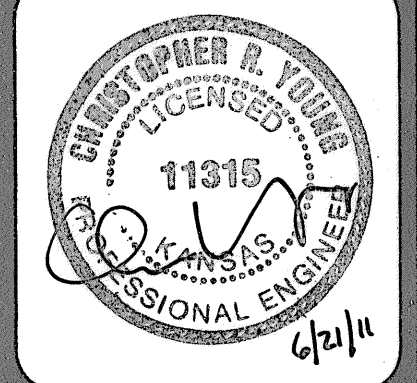
WATER LINE NO. 4



- LEGEND**
- ⊕ PP UTILITY POLE
 - ⊕ LP LIGHT POLE
 - ⊕ DM DEAD MAN
 - ⊕ WM WATER METER
 - ⊕ WV WATER VALVE
 - ⊕ GV GAS VALVE
 - ⊕ SS MH SANITARY SEWER MANHOLE
 - ⊕ SWS MH STORM SEWER MANHOLE

- NOTES:**
1. UNLESS OTHERWISE INDICATED, DIMENSIONS ARE MEASURED TO CENTERLINE OF FITTINGS IN PLAN VIEW AND TOP OF PIPE IN PROFILE VIEW.
 2. WL NO. 4 BASELINE = CENTERLINE OF FERN AVENUE RIGHT OF WAY.
 3. REFER TO SHEET 2, NOTE NO. 8, FOR DIRECTIONAL DRILLING REQUIREMENTS.

REMOVE & REPLACE CONCRETE SIDEWALK IN KIND, THIS SHEET = 20 LF
 REMOVE & REPLACE CONCRETE DRIVE IN KIND, THIS SHEET = 28 LF
 REMOVE & REPLACE CONCRETE PAVEMENT IN KIND, THIS SHEET = 100 LF



YOUNG & ASSOCIATES, P.A.
 Civil and Environmental Engineers
 100 S. Georgia, Derby, KS 67037
 Phone: (316) 798-2552 Fax: (316) 798-4408
 Email: young@youngandassociates.com

**WATER LINE NO. 4
 PLAN AND PROFILE**
McCormicks Water Main Replacement
 City of Wichita, Sedgwick County, Kansas

PROJECT NO.	DATE	BY	APP.
06-228	2-15-07	DAS	DAS
REVISIONS		DATE	BY