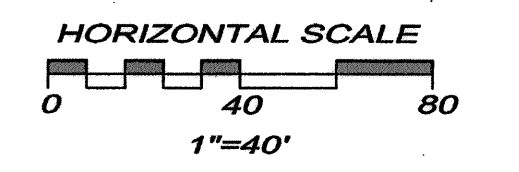
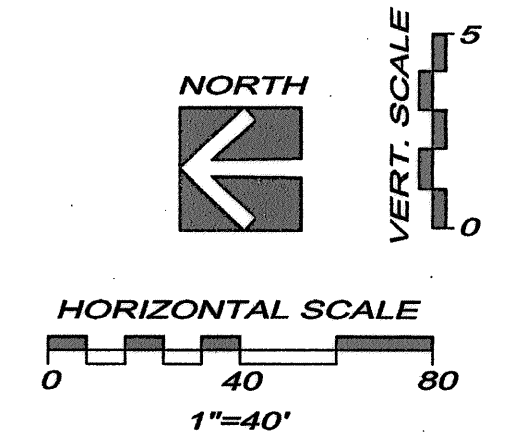


**YOUNG & ASSOCIATES, P.A.**  
Civil and Environmental Engineers  
100 S. Georgia, Derby, KS 67037  
tel: (316) 789-2552 fax: (316) 789-4408 email: young@yandem.com

**WATER LINE NO. 4  
PLAN AND PROFILE**  
McCormicks Water Main Replacement  
City of Wichita, Sedgwick County, Kansas

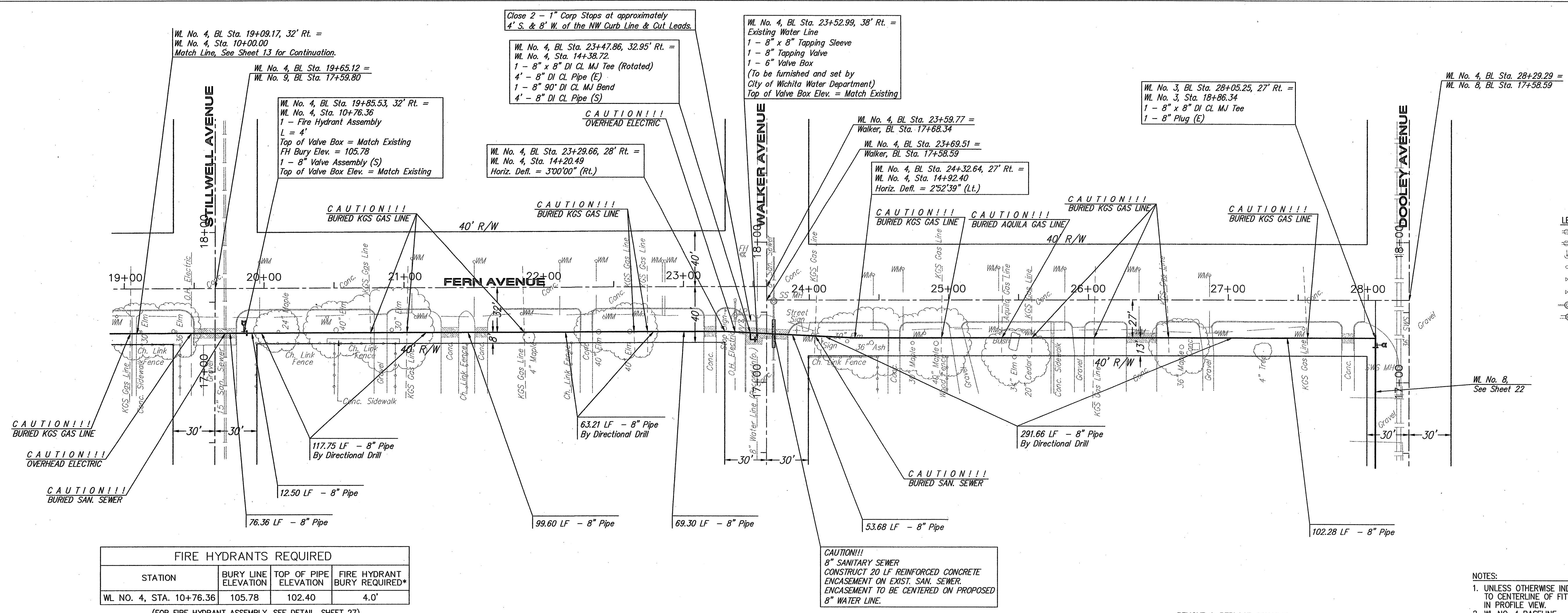
PROJECT NO.	DATE	BY	APP.
08-228	2-15-07		
DESIGNED BY	CHECKED BY	APPROVED:	

SHEET  
14  
of 37



- LEGEND**
- PP UTILITY POLE
  - LP LIGHT POLE
  - DM DEAD MAN
  - WM WATER METER
  - WV WATER VALVE
  - GV GAS VALVE
  - SS MH SANITARY SEWER MANHOLE
  - SWS MH STORM SEWER MANHOLE

- NOTES:**
- UNLESS OTHERWISE INDICATED, DIMENSIONS ARE MEASURED TO CENTERLINE OF FITTINGS IN PLAN VIEW AND TOP OF PIPE IN PROFILE VIEW.
  - WL NO. 4 BASELINE = CENTERLINE OF FERN AVENUE RIGHT OF WAY.
  - REFER TO SHEET 2, NOTE NO. 8, FOR DIRECTIONAL DRILLING REQUIREMENTS.

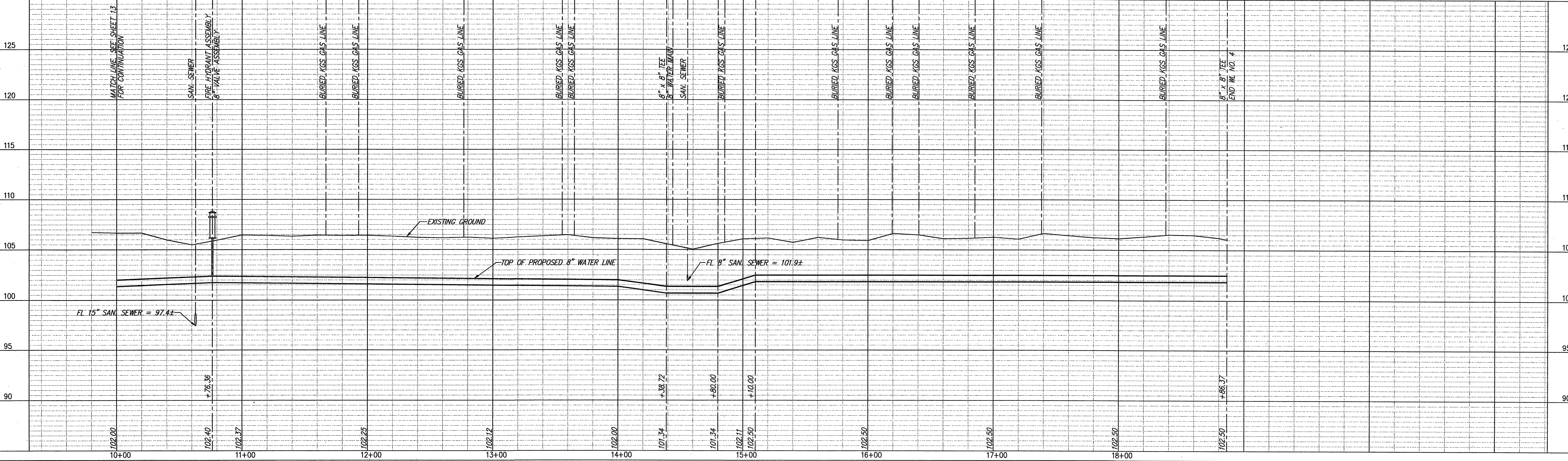


**FIRE HYDRANTS REQUIRED**

STATION	BURY LINE ELEVATION	TOP OF PIPE ELEVATION	FIRE HYDRANT BURY REQUIRED*
WL NO. 4, STA. 10+76.36	105.78	102.40	4.0'

(FOR FIRE HYDRANT ASSEMBLY, SEE DETAIL, SHEET 27)

**WATER LINE NO. 4**



REMOVE & REPLACE CONCRETE SIDEWALK IN KIND, THIS SHEET = 2 LF  
REMOVE & REPLACE CONCRETE DRIVE IN KIND, THIS SHEET = 40 LF  
REMOVE & REPLACE CONCRETE PAVEMENT IN KIND, THIS SHEET = 62 LF