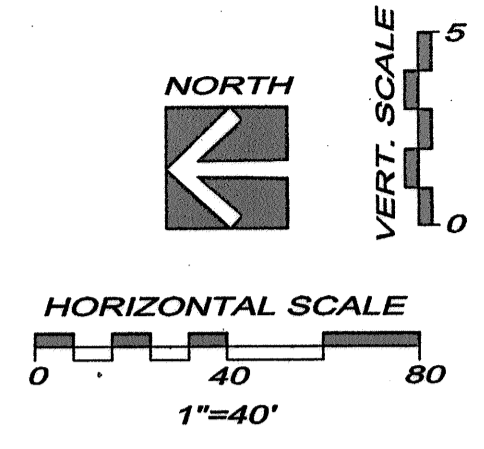
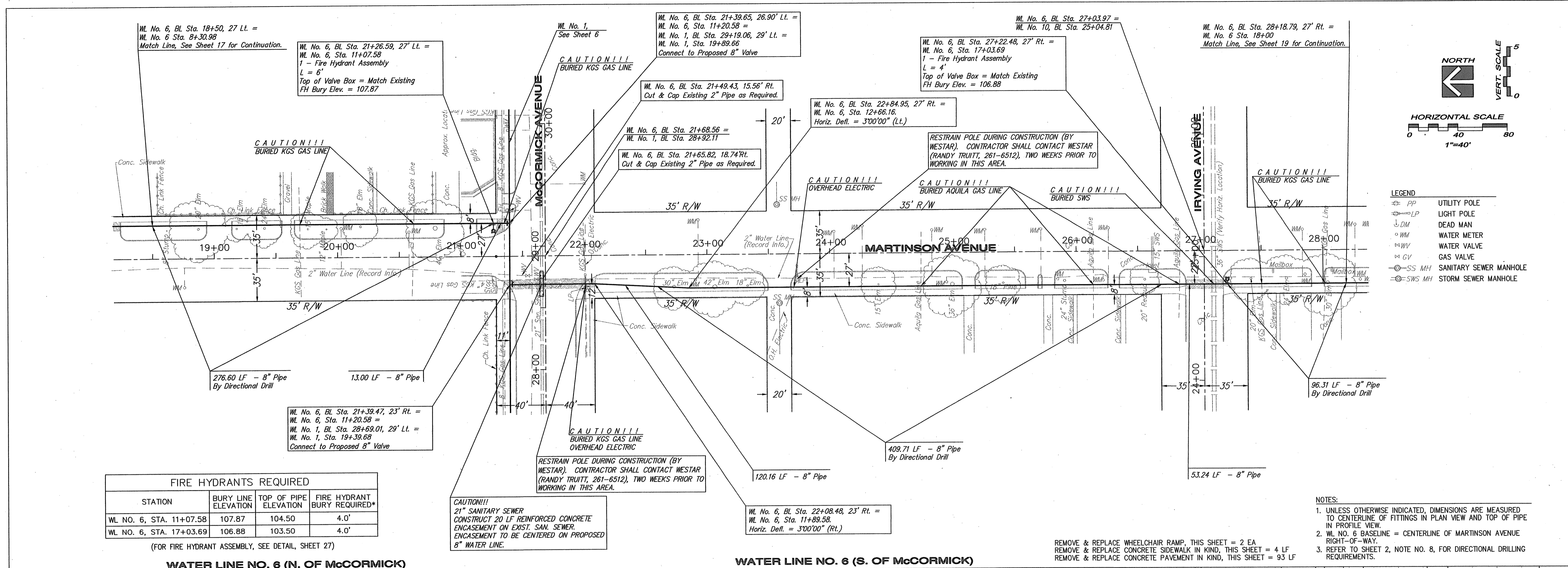


**YOUNG & ASSOCIATES, P.A.**  
Civil and Environmental Engineers  
100 S. Georgia, Derby, KS 67037  
tele: (316)798-2552 fax: (316)798-4408 email: young@yandassociates.com

**WATER LINE NO. 6  
PLAN AND PROFILE**  
McCormicks Water Main Replacement  
City of Wichita, Sedgwick County, Kansas

PROJECT NO.	DATE	BY	APP.
06-228	2-15-07	DAS	
		DAS	
		CRY	

SHEET  
**18**  
of 37



- LEGEND**
- PP UTILITY POLE
  - LP LIGHT POLE
  - DM DEAD MAN
  - WM WATER METER
  - WV WATER VALVE
  - GV GAS VALVE
  - SS MH SANITARY SEWER MANHOLE
  - SWS MH STORM SEWER MANHOLE

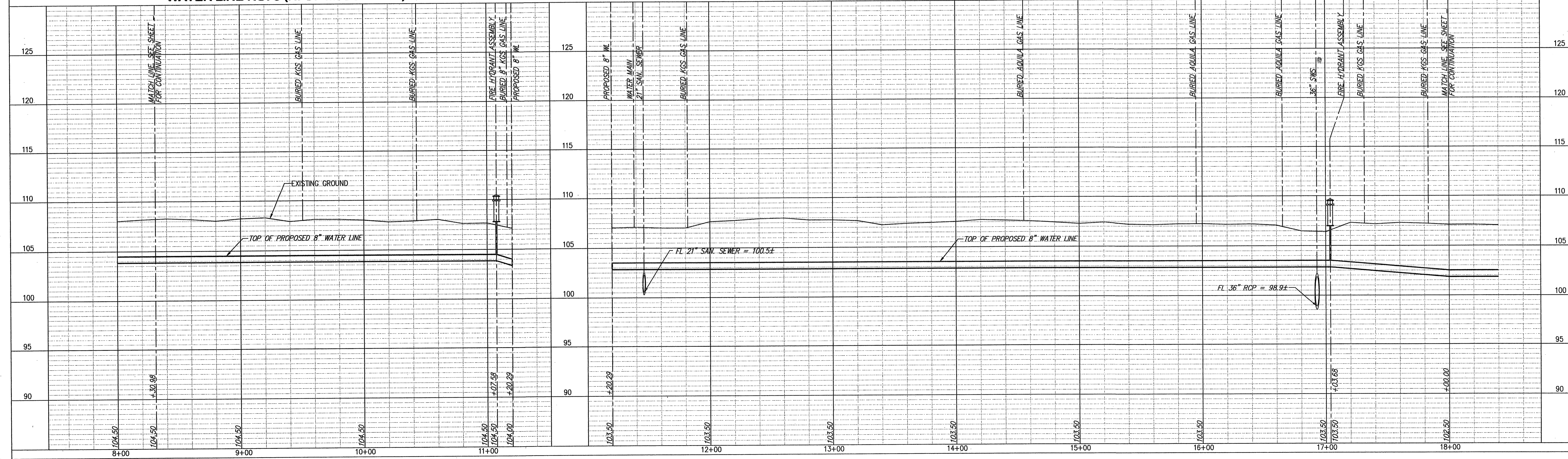
**FIRE HYDRANTS REQUIRED**

STATION	BURY LINE ELEVATION	TOP OF PIPE ELEVATION	FIRE HYDRANT BURY REQUIRED*
WL NO. 6, STA. 11+07.58	107.87	104.50	4.0'
WL NO. 6, STA. 17+03.69	106.88	103.50	4.0'

(FOR FIRE HYDRANT ASSEMBLY, SEE DETAIL, SHEET 27)

**WATER LINE NO. 6 (N. OF McCORMICK)**

**WATER LINE NO. 6 (S. OF McCORMICK)**



- NOTES:**
- UNLESS OTHERWISE INDICATED, DIMENSIONS ARE MEASURED TO CENTERLINE OF FITTINGS IN PLAN VIEW AND TOP OF PIPE IN PROFILE VIEW.
  - WL NO. 6 BASELINE = CENTERLINE OF MARTINSON AVENUE RIGHT-OF-WAY.
  - REFER TO SHEET 2, NOTE NO. 8, FOR DIRECTIONAL DRILLING REQUIREMENTS.

REMOVE & REPLACE WHEELCHAIR RAMP, THIS SHEET = 2 EA  
REMOVE & REPLACE CONCRETE SIDEWALK IN KIND, THIS SHEET = 4 LF  
REMOVE & REPLACE CONCRETE PAVEMENT IN KIND, THIS SHEET = 93 LF