

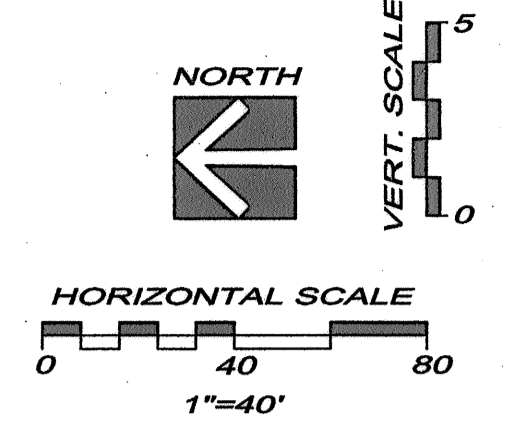
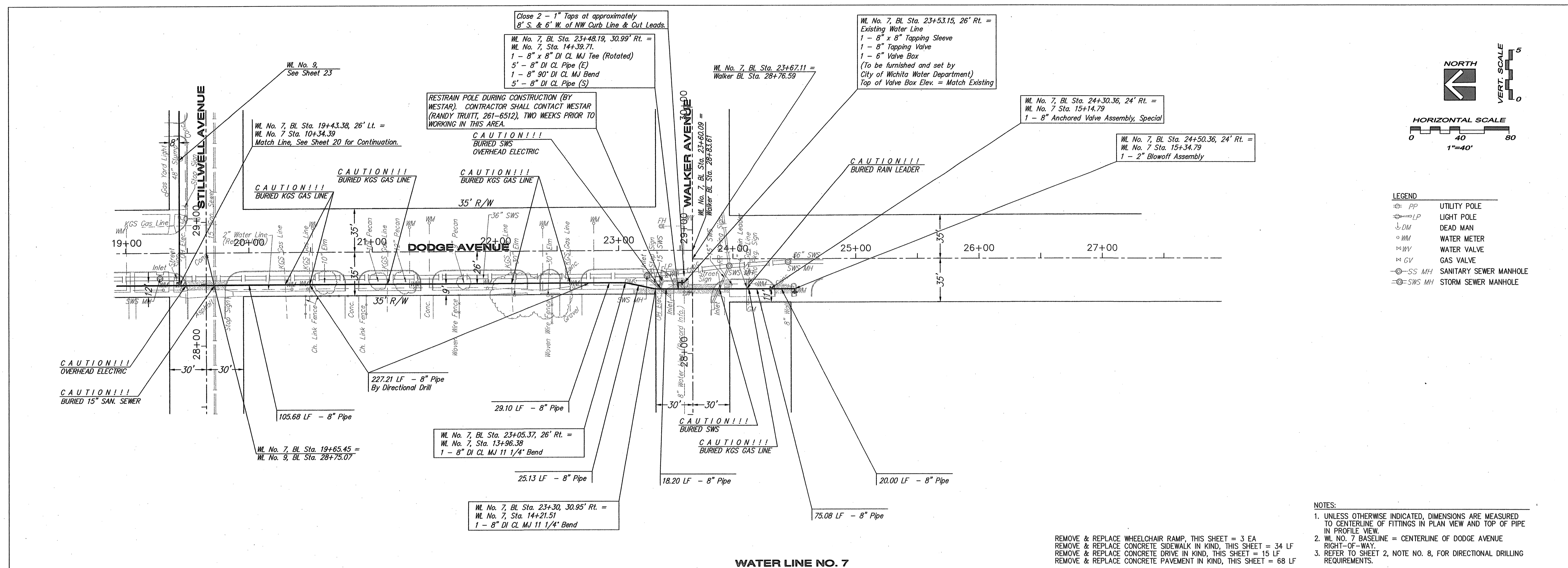


**YOUNG & ASSOCIATES, P.A.**  
 Civil and Environmental Engineers  
 100 S. Geologie, Derby, KS 67037  
 Phone: (316) 788-2552 • Fax: (316) 788-4408 • Email: youngpa@earthlink.net

**WATER LINE NO. 7  
 PLAN AND PROFILE**  
 McCormicks Water Main Replacement  
 City of Wichita, Sedgwick County, Kansas

PROJECT NO.	DATE	BY	REVISIONS
09-2281	2-15-07	DAS	DESIGNED, DWS
			CHECKED, DRY
			APPROVED:

SHEET  
**21**  
 of 37



**LEGEND**

⊕	UTILITY POLE
⊕	LIGHT POLE
⊕	DEAD MAN
⊕	WATER METER
⊕	WATER VALVE
⊕	GAS VALVE
⊕	SANITARY SEWER MANHOLE
⊕	STORM SEWER MANHOLE

- NOTES:**
- UNLESS OTHERWISE INDICATED, DIMENSIONS ARE MEASURED TO CENTERLINE OF FITTINGS IN PLAN VIEW AND TOP OF PIPE IN PROFILE VIEW.
  - W.L. NO. 7 BASELINE = CENTERLINE OF DODGE AVENUE RIGHT-OF-WAY.
  - REFER TO SHEET 2, NOTE NO. 8, FOR DIRECTIONAL DRILLING REQUIREMENTS.

REMOVE & REPLACE WHEELCHAIR RAMP, THIS SHEET = 3 EA  
 REMOVE & REPLACE CONCRETE SIDEWALK IN KIND, THIS SHEET = 34 LF  
 REMOVE & REPLACE CONCRETE DRIVE IN KIND, THIS SHEET = 15 LF  
 REMOVE & REPLACE CONCRETE PAVEMENT IN KIND, THIS SHEET = 68 LF

