

Nowak Construction - Contractor
 J. Westhoff - City of Wichita, Field Project Engineer
 J. Patton - City of Wichita, Inspector
 As-built
 Stubs & Risers
 Release Date: 09/06/2012
 pdf: APRosAs 01/22/2013

Lateral 429, Four Mile Creek Sewer SANITARY SEWER IMPROVEMENTS to serve **WOODS NORTH 3RD ADD. - PH. I**

CITY OF WICHITA, KANSAS

Gary Janzen, P.E., Interim City Engineer

Project Number

468-84821

O.C.A. Number

744337

Benchmarks

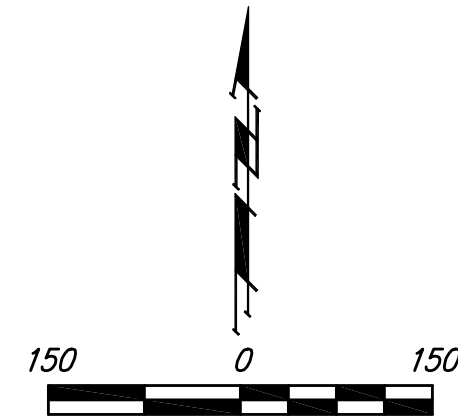
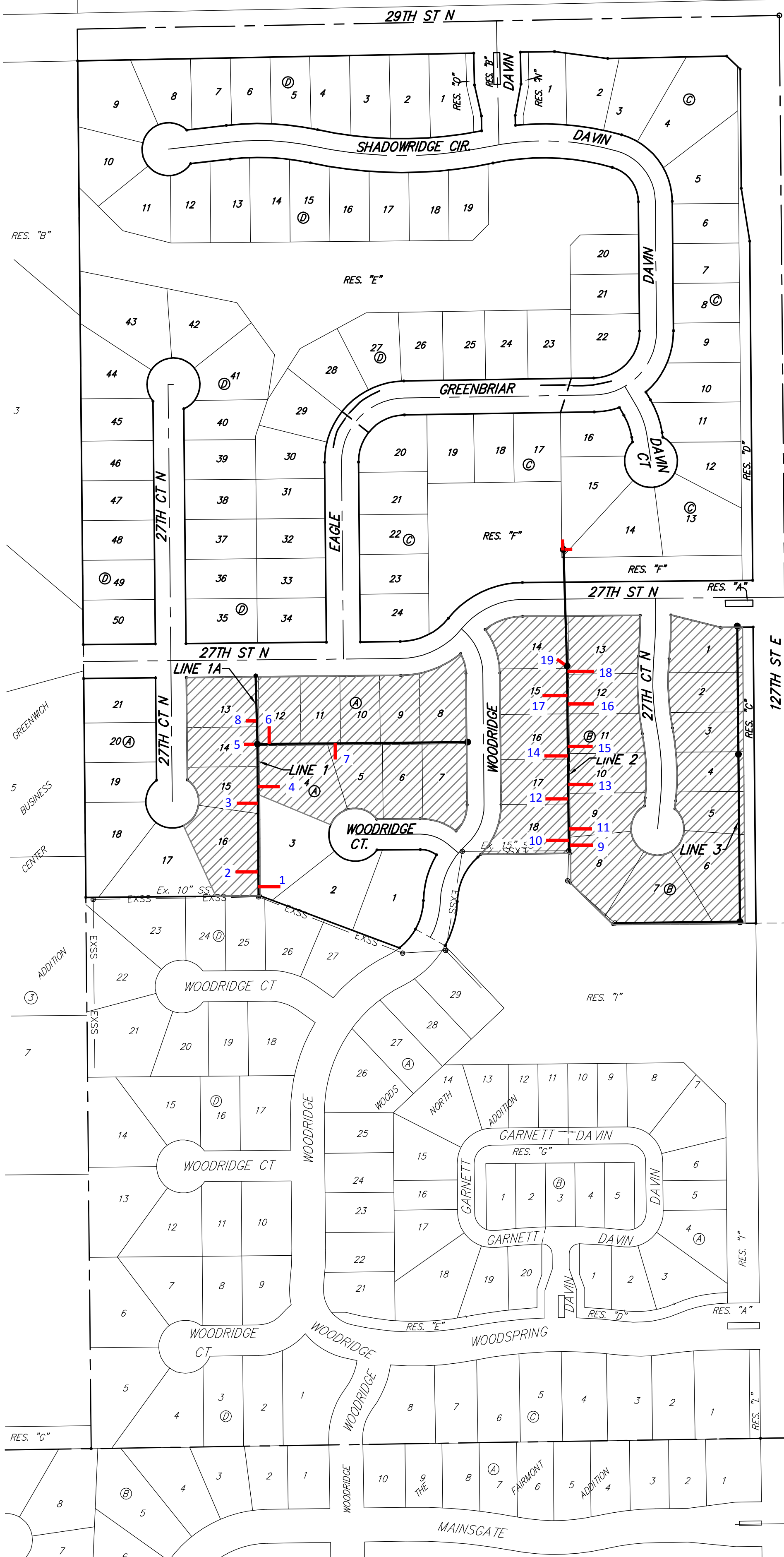
BM #1:
 RR Spike in CATV Pole, 85'
 east and 77' south of SE
 corner of Woods North 3rd
 Addition.
 Elev. = 1383.00 NAVD88

BM #2:
 "□" cut at centerline of
 inlet adjacent to Lot 29,
 Block A, Woods North 2nd
 Addition.
 Elev. = 1387.12 NAVD88

BM #3:
 Cross cut on north end of
 west headwall 137.5' south &
 12' west of the intersection
 of 29th St N & 127th St E.
 ELEV. = 1382.45 NAVD88

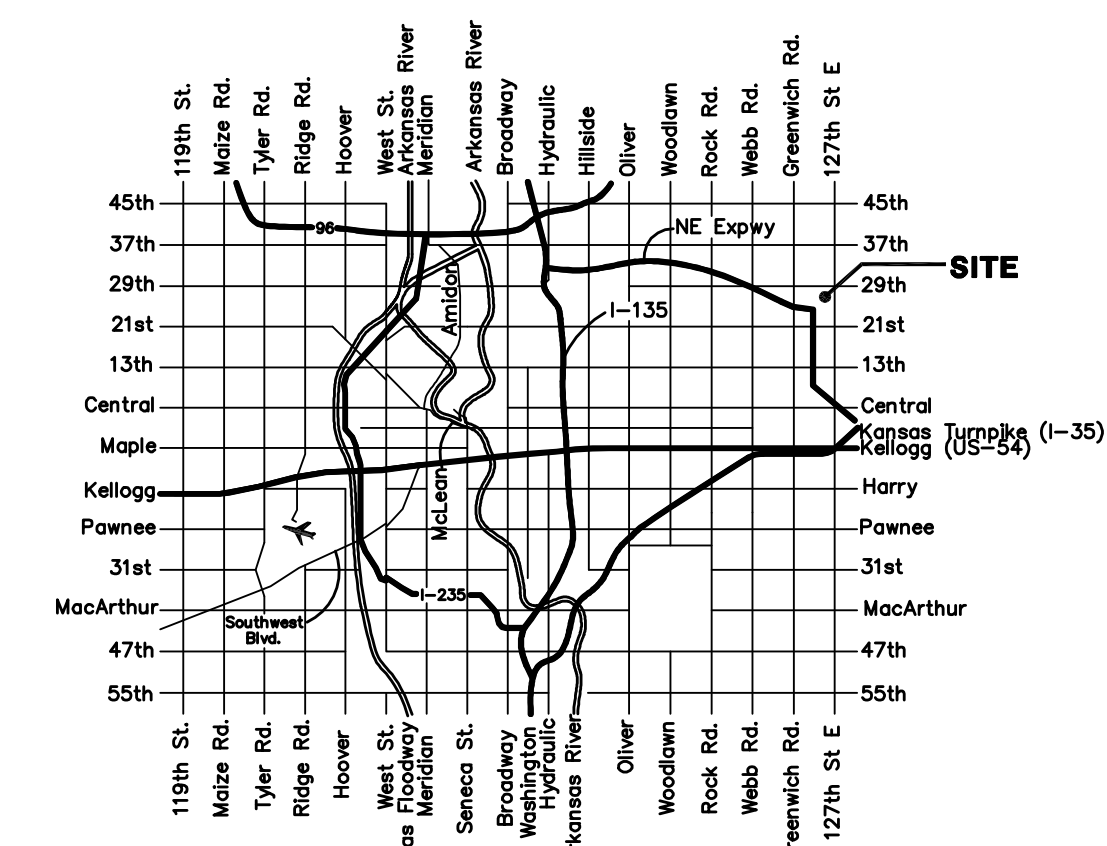
Sheet Index

Title Sheet	1
Lines 1 & 1A	2
Line 2	3
Line 3	4
Standard Manhole Detail	5
Ring & Cover Detail	6
Vertical Riser Detail	7
Erosion Control Plan	8
Erosion Control BMP Details	9-12
Coordinate Sheet	13
Copy of Plat	14

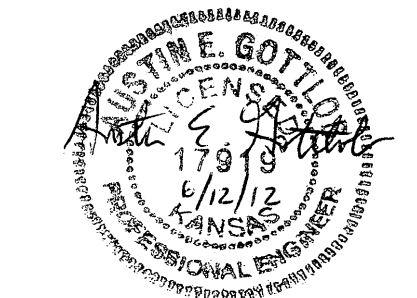


GENERAL NOTES:

- Contractor will be required to provide notice to utility companies a minimum of seventy-two (72) hours prior to any excavation, as follows:
 Kansas One-Call 687-2470
 The Contractor must notify the following in case of an emergency:
 Cox Communications 262-4270
 Kansas Gas Service 1-888-482-4950
 Westar Energy 383-8650
 Black Hills Energy 1-800-303-0357
 AT&T 268-2245
 City of Wichita Water Dept. 268-4563
 City of Wichita Sewer Maint. 268-4024
 City of Wichita Storm Sewer Maint. 268-4090
 City of Wichita Traffic Maint. 268-4034
 Conoco Phillips Pipeline Co. 1-877-267-2290
 Southern Star Pipeline Co. 529-6600
 Kinder-Morgan Pipeline Co. 1-888-844-5658
- Utility service lines, poles, valve boxes, meters, and etcetera are to be adjusted as necessary by others prior to construction unless the plans specifically call for their adjustment by the Contractor or unless the plans specifically identify a utility to be adjusted by its owner during construction. Existing utilities and their location, as shown on the plans, represent the best information obtainable for design. The Contractor will be required to work around existing utilities within the right-of-way which do not conflict with proposed construction.
- Rubble from the removal of miscellaneous structures and excess excavation which is to be wasted shall be disposed of on sites to be provided by the Contractor. These sites shall be approved by the Engineer as to suitability, appearance and site location. Locations, in the opinion of the Engineer, that will leave an unsightly appearance will not be approved. All disposal sites must be approved by the Kansas Department of Health and Environment. Material either stockpiled or disposed of in a flood plain would require a Kansas State Board of Agriculture permit. Any material dumped in waters of the United States or wetlands is subject to U.S. Corps of Engineers permitting regulations. Any material buried or stockpiled beyond approved construction limits would require additional archaeological investigations unless buried in a previously approved borrow location.
- Trees and shrubs in public right-of-way which are in direct conflict with proposed new construction shall be removed by the Contractor with the Engineer's approval. Trees and shrubs which are not in direct conflict with proposed new construction shall be saved and protected from damage.
- The Contractor shall give all property owners and/or tenants of developed property abutting the construction of this project a minimum of ten (10) days notice prior to start of construction.
- The Contractor shall be responsible for preserving property irons. The Contractor will be required to re-establish any property irons which are damaged or destroyed by his construction operations. Such irons shall be re-established by a licensed land surveyor in accordance with state laws.
- All existing and proposed erosion control measures including silt fencing, erosion control mat, straw bales, inlet barriers, and const. entrance shall be maintained throughout construction by the contractor and until project is accepted by the City of Wichita. The on-site engineer shall complete weekly reports on the status of erosion control measures. The contractor shall be required to comply with maintenance and/or replacement of erosion control measures as determined by the on-site engineer until project is accepted by City of Wichita. Maintenance and/or replacement of erosion control measures to be paid by L.S. bid item "Site Restoration".
- The Contractor shall be responsible for maintaining continuous flow of sewage through construction. Contractor's proposed method for maintaining sewage flow shall be approved by the Engineer. Cost of maintaining flow of sewage through construction will not be paid for directly and this cost shall be considered as subsidiary to the other pay items of work.
- All areas disturbed during construction (except Res. "C" and "I") shall be seeded at 300 lbs./acre with Rye Grass immediately following construction in that area. Contractor shall prepare ground per City Specifications.
 Seed: Kansas Premium Fescue Blend: 8 lbs./1000 sq. ft.
 Mulch: Prairie Hay: 2 tons/acre
 Fertilizer: 12-24-12: 850 lbs./acre
- All areas disturbed during construction within Res. "C" and "I" shall be seeded, mulched, and fertilized as follows (Permanent Seeding):
 All costs associated with seeding, mulching, and fertilizing shall be included in bid item "Seeding". All seeding operations shall conform to City of Wichita Standard Specifications.
- The developer for this project is Ritchie Development Corporation, Kevin Mullen, President (316)684-7300.



Vicinity Map



Benefit District

Baughman Company, P.A. 315 Ellis St. Wichita, KS 67211 P 316-262-7271 F 316-262-0145
 ENGINEERING | SURVEYING | PLANNING | LANDSCAPE ARCHITECTURE