

BENCHMARKS:
 BM #1:
 RR Spike in CATV Pole, 85' east and 77' south of SE corner of Woods North 3rd Addition.
 Elev. = 1383.00 NAVD88

BM #2:
 " " cut at centerline of inlet adjacent to Lot 29, Block A, Woods North 2nd Addition.
 Elev. = 1387.12 NAVD88

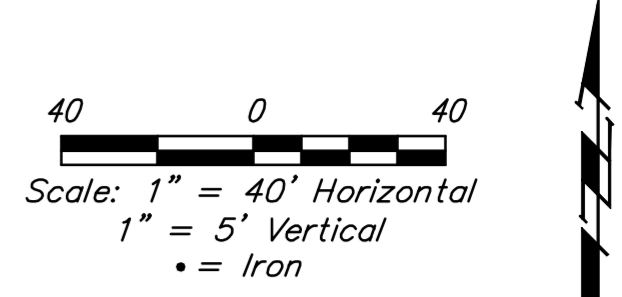
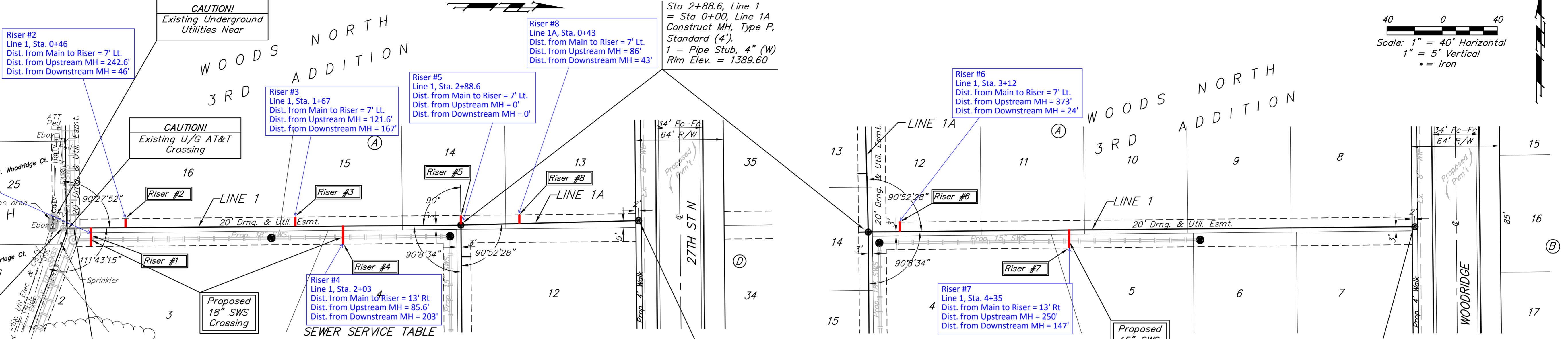
BM #3:
 Cross cut on north end of west headwall 137.5' south & 12' west of the intersection of 29th St N & 127th St E.
 ELEV. = 1382.45 NAVD88

Riser #1
 Line 1, Sta. 0+20
 Dist. from Main to Riser = 13' Rt
 Dist. from Upstream MH = 268.6'
 Dist. from Downstream MH = 20'

Sta 0+00, Begin Line 1
 Connect to existing stub in manhole and extend pipe north.

CAUTION!
 Underground irrigation lines, sprinklers, and landscaping are present in Lot 25 & 26. Contractor shall be responsible for preservation of these systems and repair any damage caused by construction at no additional cost to the project. Cost incidental to "Site Restoration."

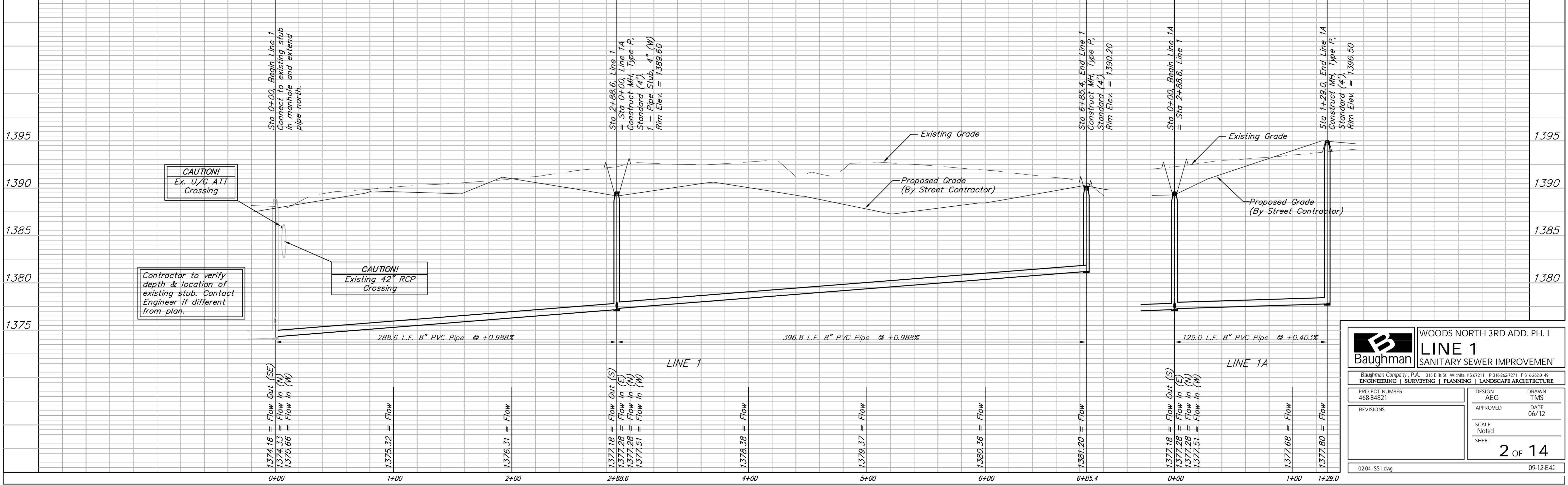
Contractor to replace all disturbed areas in Lot 25 & 26 with sod in like kind to existing. Cost incidental to "Site Restoration."



SEWER SERVICE TABLE

NUMBER	TYPE	LOCATION			FOR INFORMATION ONLY	
		LOT NO.	BLOCK NO.	LINE NO.	STATION DIRECTION	APPROXIMATE LENGTH 4" PIPE
1	8" X 4" Tee	3	A	1	0+20/Rt.	10.0' 13.0'
2	8" X 4" Tee	16	A	1	0+46/Lt.	10.0' 7.0'
3	8" X 4" Tee	15	A	1	1+67/Lt.	10.5' 7.0'
4	8" X 4" Tee	4	A	1	2+03/Rt.	10.5' 13.0'
5	4" Stub w/Riser	14	A	1	2+88.6/Lt.	8.0' 7.0'
6	8" X 4" Tee	12	A	1	3+12/Lt.	8.0' 7.0'
7	8" X 4" Tee	5	A	1	4+35/Rt.	6.5' 13.0'
8	8" X 4" Tee	13	A	1A	0+43/Lt.	10.5' 12.0' 7.0'

NOTE: Vertical Riser Pipe shall be extended to 2' minimum above ground water elevation and 4' maximum below proposed ground elevation.



Baughman ENGINEERING | SURVEYING | PLANNING | LANDSCAPE ARCHITECTURE

WOODS NORTH 3RD ADD. PH. I
LINE 1
 SANITARY SEWER IMPROVEMENT

PROJECT NUMBER: 468-84821
 DESIGN: AEG
 DRAWN: TMS
 APPROVED: [Signature]
 DATE: 06/12

SCALE: Noted
 SHEET: **2 OF 14**

0204_S51.dwg 09-12-E42

