

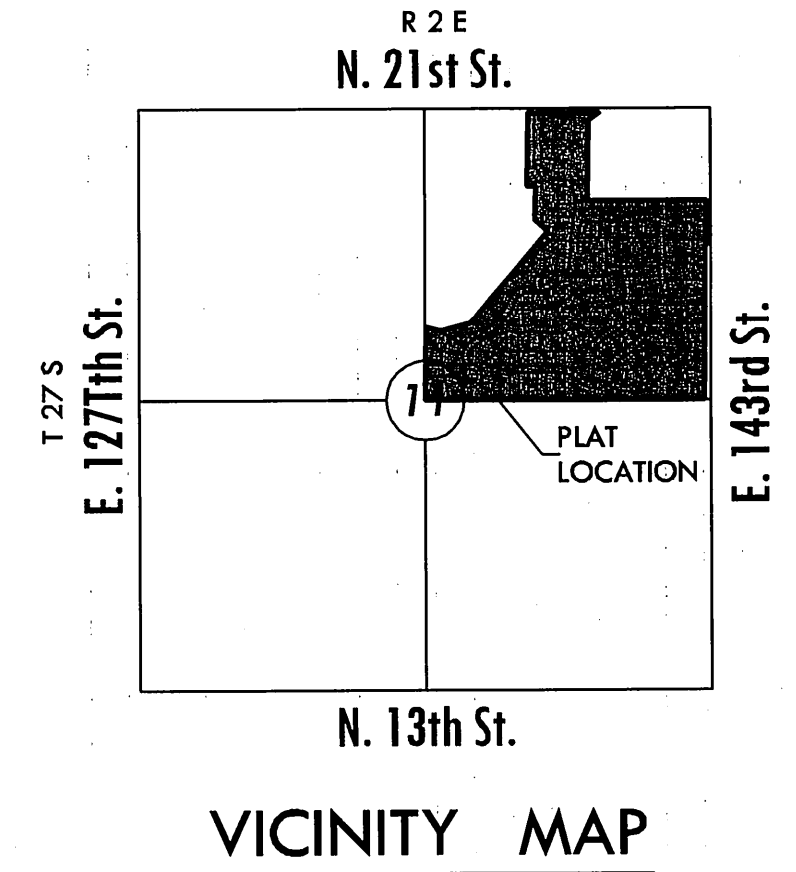
# SANITARY SEWER PLANS KRUG SOUTH ADDITION

LATERAL 8, MAIN 14  
PROJECT NO. 468-84322

THE CITY OF WICHITA, KANSAS  
GARY L. JANZEN, P.E. INTERIM CITY ENGINEER

OCA NO. 744335

McCullough Excavation - Contractor  
J. Westhoff - City of Wichita, Field Project Engineer  
M. Thom - City of Wichita, Inspector  
As-built  
Stub & Risers  
Release Date: 11/09/2012  
pdf: APRosas 1/24/2013



## GENERAL NOTES

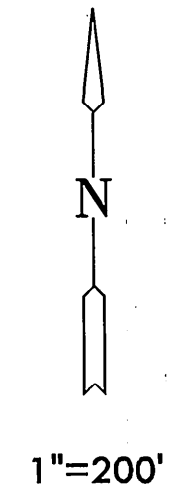
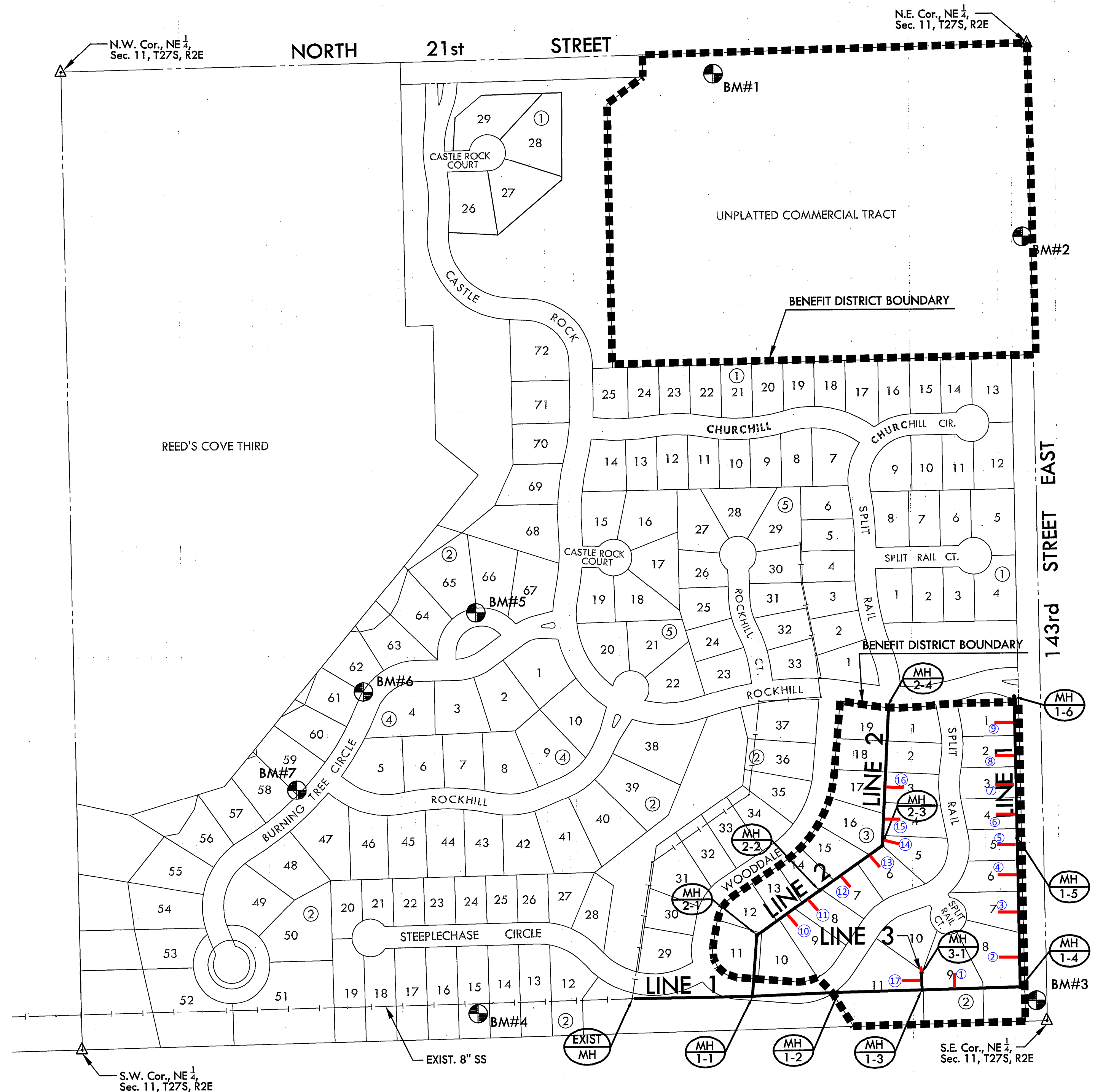
1. UNLESS SHOWN OR STATED OTHERWISE ON THESE DRAWINGS, MATERIALS AND CONSTRUCTION SHALL BE IN ACCORDANCE WITH CITY OF WICHITA STANDARD SPECIFICATIONS.
2. CONTRACTOR WILL BE REQUIRED TO PROVIDE A MINIMUM ADVANCE NOTICE OF SEVENTY-TWO (72) HOURS TO UTILITY COMPANIES PRIOR TO STARTING ANY EXCAVATION AS FOLLOWS:

KANSAS ONE-CALL 1-800-344-7233  
or 687-2470 (LOCAL WICHITA)

THE CONTRACTOR MUST NOTIFY THE FOLLOWING IN CASE OF AN EMERGENCY:

AT&T (TELEPHONE)	800-870-8390
COX COMMUNICATIONS (CABLE)	262-0661
KANSAS GAS SERVICE (GAS)	832-3101
CITY OF WICHITA WATER & SEWER	262-6000
WESTAR (ELECTRIC)	383-8600
BLACK HILLS ENERGY (GAS)	800-303-0357

3. THE CONTRACTOR SHALL BE RESPONSIBLE FOR PRESERVING PROPERTY IRONS. THE CONTRACTOR WILL BE REQUIRED TO RE-ESTABLISH ANY PROPERTY IRONS WHICH ARE DAMAGED OR DESTROYED BY HIS CONSTRUCTION OPERATIONS. SUCH IRONS SHALL BE RE-ESTABLISHED BY A LICENSED LAND SURVEYOR IN ACCORDANCE WITH STATE LAWS.
4. EXISTING UTILITIES AND THEIR LOCATIONS, AS SHOWN ON THE PLANS REPRESENT THE BEST INFORMATION OBTAINABLE FOR DESIGN. LOCATION INFORMATION HAS BEEN OBTAINED FROM THE VARIOUS UTILITY COMPANIES AND IS EITHER FROM COMPANY RECORD DRAWINGS OR COMPANY PROVIDED FIELD LOCATIONS. THE PLAN LOCATIONS SHOWN ARE NOT GUARANTEED. ADDITIONAL EXISTING UTILITIES MAY ALSO BE ENCOUNTERED.
5. RUBBLE FROM THE REMOVAL OF MISCELLANEOUS STRUCTURES AND EXCESS EXCAVATION WHICH IS TO BE WASTED SHALL BE DISPOSED OF ON SITES TO BE PROVIDED BY THE CONTRACTOR. THESE SITES SHALL BE APPROVED BY THE ENGINEER AS TO SUITABILITY, APPEARANCE AND SITE LOCATION. LOCATIONS THAT, IN THE OPINION OF THE ENGINEER, WILL LEAVE AN UNSIGHTLY APPEARANCE WILL NOT BE APPROVED. ALL DISPOSAL SITES MUST BE APPROVED BY THE KANSAS DEPARTMENT OF HEALTH AND ENVIRONMENT. MATERIAL EITHER STOCKPILED OR DISPOSED OF IN A FLOOD PLAIN WOULD REQUIRE A KANSAS STATE BOARD OF AGRICULTURE PERMIT. ANY MATERIAL DUMPED IN WATERS OF THE UNITED STATES OR WETLANDS IS SUBJECT TO U.S. CORPS OF ENGINEERS PERMITTING REGULATIONS. ANY MATERIAL BURIED OR STOCKPILED BEYOND APPROVED CONSTRUCTION LIMITS WOULD REQUIRE ADDITIONAL ARCHAEOLOGICAL INVESTIGATIONS UNLESS BURIED IN A PREVIOUSLY APPROVED BORROW LOCATION.
6. COST OF EXCAVATION, HAULING, AND DUMPING OF EXCESS EXCAVATION SHALL BE SUBSIDIARY TO THE PROJECT.
7. A PORTION OF EXCESS EXCAVATED MATERIAL SHALL BE MOUNDED AROUND MANHOLES WHICH EXTEND MORE THAN ONE (1) FOOT ABOVE THE EXISTING GROUND. SUCH MOUNDS SHALL BE CONSTRUCTED WITH A SIX (6) FOOT DIAMETER FLAT TOP WITH 4 TO 1 SIDE SLOPES DOWN TO THE ORIGINAL GROUND. THE ELEVATION OF THE FLAT TOP OF THE MOUND SHALL BE 0.4 FOOT BELOW THE TOP OF THE MANHOLE.
8. ALL STUBS AND PLUGGED PIPES SHALL BE LOCATED WITH GREEN PLASTIC TAPE IN THE SAME MANNER AS RISERS.
9. CONNECTING TO EXISTING MANHOLES: PRIOR TO LAYING SEWER LINES USING EXISTING STUBS IN EXISTING MANHOLES, THE CONTRACTOR SHALL EXPOSE AND VERIFY THE ELEVATION, GRADE AND ALIGNMENT OF EXISTING STUBS AND NOTIFY THE ENGINEER OF ANY DEVIATION FROM THE PLAN. WHERE CONNECTION TO AN EXISTING MANHOLE THAT DOES NOT HAVE AN EXISTING STUB OR THE STUB IS UNSUITABLE DUE TO ELEVATION GRADE OR ALIGNMENT, THE CONTRACTOR SHALL BORE CUT INTO EXISTING MANHOLE WALL TO MAKE CONNECTION USING APPROVED WATER STOP GASKET, AND RESHAPE THE EXISTING MANHOLE INVERT TO PROVIDE SMOOTH FLOW. THE COST OF CONNECTING TO EXISTING MANHOLES IS INCIDENTAL TO THE PROJECT.
10. TREES AND SHRUBS IN PUBLIC RIGHT-OF-WAY WHICH ARE IN DIRECT CONFLICT WITH PROPOSED NEW CONSTRUCTION SHALL BE REMOVED BY THE CONTRACTOR WITH THE ENGINEER'S APPROVAL. TREES AND SHRUBS WHICH ARE NOT IN DIRECT CONFLICT WITH PROPOSED NEW CONSTRUCTION SHALL BE SAVED AND PROTECTED FROM DAMAGE.
11. ALL DISTURBED AREAS TO BE SEEDED WITH RYE GRASS AT A RATE OF 200 LBS. PER ACRE WITHIN 10 DAYS OF CONSTRUCTION. CONTRACTOR TO PREPARE GROUND PER CITY SPECIFICATIONS. COST IS SUBSIDIARY TO SITE PREPARATION AND RESTORATION.
12. DEVELOPER FOR THIS PROJECT IS:  
KRUG SOUTH RESIDENTIAL, LLC  
RITCHIE DEVELOPMENT CORPORATION  
8100 E. 22nd St. BLDG. 1000  
WICHITA, KANSAS, 67226  
CONTACT - TERRY D. RHEA, VICE PRESIDENT  
316-684-7300



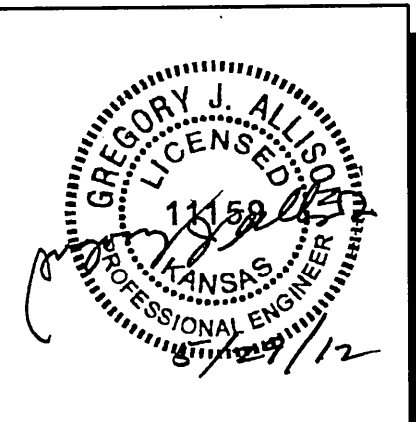
## INDEX TO DRAWINGS

SHEET NO.	DESCRIPTION
1	TITLE SHEET
2-4	DETAILS
5	LINE 1
6	LINE 1 & 3
7	LINE 2
8	BUBBLE MAP
9-13	BMP DETAILS
14-16	PLAT

## BENCHMARKS

- Datum BM: "L" at NE corner of inlet on S. side of Williamsgate over bridge in Hawthorne Addition.  
Elev. = 1355.74 (NGVD 29)
- BM#1: RR spike in S. face of PP, 3rd PP W. of 143rd St. (799' from CL) S. side of 21st St. (49' from CL)  
Elev. = 1362.17 (NGVD 29)
- BM#2: FH NE bolt w/ tag on top of flange, W. side of 143rd St. NW of drive. (23' from CL)  
Elev. = 1382.81 (NGVD 29)
- BM#3: RR spike in N. face of HLP in N. pole, the first HLP w. of E. 143rd St.  
Elev. = 1370.25 (NGVD 29)
- BM#4: RR spike in N. face of HLP in N. pole, the third HLP west of E. 143rd St.  
Elev. = 1358.43 (NGVD 29)
- BM#5: BM Chiseled square on top of curb between Lots 65 and 66, Block 2.  
Elev. = 1358.93 NGVD 29
- BM#6: BM Chiseled square on top of curb between Lots 62 and 63, Block 2.  
Elev. = 1354.11 NGVD 29
- BM#7: TBM Chiseled "4" on north rim of sanitary sewer manhole 187' southwest of south end of existing pavement on Burning Tree, 9.7' north of "south" corner of Lot 59, Block 2.  
Elev. = 1354.96 NGVD 29

**MKEC**  
ENGINEERING  
CONSULTANTS, INC.  
411 N. WEBB ROAD  
WICHITA, KS. 67206  
316-684-9600



SANITARY SEWER LATERAL 8, MAIN 14  
**KRUG SOUTH ADDITION**  
PHASE 2

**TITLE SHEET**  
SHEET TITLE  
PROJECT NUMBER  
468-84322

DESIGNED: DFL / KKL / GJA  
DRAWN: \_\_\_\_\_  
CHECKED: \_\_\_\_\_

ISSUED: May 2012  
REVISED: \_\_\_\_\_

SHEET NO.  
1 of 16