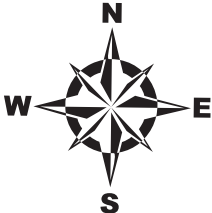


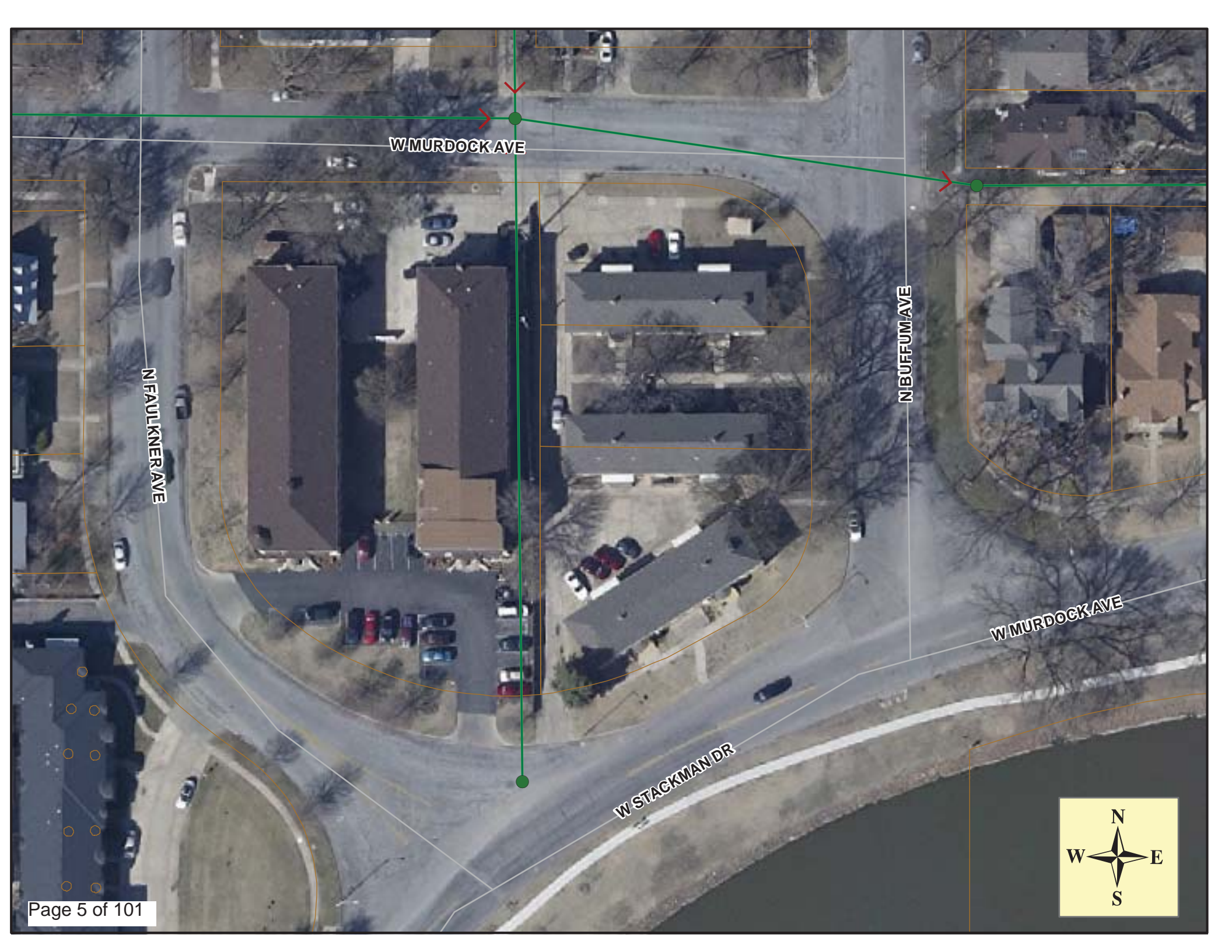
MH 5348-001  
Approx MH depth = 8.1 ft

Install 335 lf of 8"  
Cured-in-Place Liner

MH 5348-251  
Approx MH depth = 6.6 ft

**SITE 1**





W MURDOCK AVE

N FAULKNER AVE

N BUFFUM AVE

W MURDOCK AVE

W STACKMAN DR





# Television Inspection Master Report

8/13/2010  
10:08 AM

US Structure: 5348-251      1318 W MURDOCK ST      Date Insp: 6/21/2010      Basin: C03E  
 DS Structure: 5348-001      1312 W MURDOCK ST      Dir Televised: Upstream To Downstream

**Pipe Information**

Shape: Round  
 Dia/Ht: 8  
 Length: 337.0

Length Status:  
 Material: VCP  
 Slope: 0.400

Project No. : B-238  
 Index:  
 DVD #0585

Comments: 118 FEET PIPE NEEDS REPAIR, 118 FEET OH NEEDS REPAIR, 184 FEET PIPE NEEDS REPAIR, LINE HAS LOTS OF CRACKS NEEDS REHABED.

Obs. #	VTR	Counter	Distance	Location	Description	Rating	Ratings			
							Obsrvd (gpm)	Est. (gpm)	Struct Clean	Remain (gpm)
1			0.0		5348-251 / US Manhole	1	0.000	0	0	0.000
2			14.4		Wye Service	1	0.000	0	0	0.000
3			15.8		Crack-Horizontal	2	0.002	2	0	0.002
4			16.9		Wye Service	1	0.000	0	0	0.000
5			23.3		Crack-Horizontal	2	0.002	2	0	0.002
6			27.9		Broken Pipe	3	0.010	60	0	0.010
7			30.1		Crack-Radial	2	0.002	2	0	0.002
8			30.5		Crack-Radial	2	0.002	2	0	0.002
9			32.9		Crack-Horizontal	3	0.004	5	0	0.004
10			39.7		Wye Service	1	0.000	0	0	0.000
11			40.4		Crack-Horizontal	2	0.002	2	0	0.002
12			42.1		Wye Service	1	0.000	0	0	0.000
13			64.9		Wye Service	1	0.000	0	0	0.000
14			67.3		Wye Service	1	0.000	0	0	0.000
15			90.1		Wye Service	1	0.000	0	0	0.000
16			90.2		Crack-Horizontal	2	0.002	2	0	0.002
17			92.6		Wye Service	1	0.000	0	0	0.000
18			112.2		Break-In Conn	2	0.002	0	0	0.002
1312 W STACKMAN DRIVE										
19			115.3		Wye Service	1	0.000	0	0	0.000
20			117.8		Wye Service	1	0.000	0	0	0.000
21			118.5		Broken Pipe / cracked all around the OH	4	0.030	78	0	0.030
22			118.9		Observation Hole (OH)	3	0.000	0	0	0.000
23			140.3		Wye Service	1	0.000	0	0	0.000
24			142.3		Wye Service	1	0.000	0	0	0.000
1316 W STACKMAN DRIVE										
25			165.9		Wye Service	1	0.000	0	0	0.000
26			168.2		Wye Service	1	0.000	0	0	0.000



Television Inspection Master Report

8/13/2010  
10:08 AM

US Structure: 5348-251      1318 W MURDOCK ST      Date Insp: 6/21/2010      Basin: C03E  
DS Structure: 5348-001      1312 W MURDOCK ST      Dir Televised: Upstream To Downstream

27	181.8	Crack-Horizontal	2	0.002	2	0	0.002
28	184.6	Broken Pipe Small hole on side of pipe, at water level	5	0.060	100	0	0.060
29	186.9	Broken Pipe	2	0.008	44	0	0.008
30	188.6	Wye Service	1	0.000	0	0	0.000
31	190.8	Wye Service	1	0.000	0	0	0.000
32	213.7	Wye Service	1	0.000	0	0	0.000
33	216.2	Wye Service	1	0.000	0	0	0.000
34	219.6	Crack-Horizontal	2	0.002	2	0	0.002
35	225.3	Observation Hole	1	0.000	0	0	0.000
36	232.1	Crack-Horizontal	2	0.002	2	0	0.002
37	232.1	Crack-Radial	2	0.002	2	0	0.002
38	238.7	Wye Service	1	0.000	0	0	0.000
39	240.2	Crack-Radial	3	0.004	5	0	0.004
40	241.2	Wye Service	1	0.000	0	0	0.000
41	242.3	Crack-Horizontal	3	0.004	5	0	0.004
42	257.5	Crack-Radial	2	0.002	2	0	0.002
43	260.4	Break-In Conn 1322 W STACKMAN DRIVE	2	0.002	0	0	0.002
44	262.9	Break-In Conn 1322 W STACKMAN DRIVE	2	0.002	0	0	0.002
45	265.8	Break-In Conn 717 N BUFFUM / PVC	1	0.001	0	0	0.001
46	267.5	Crack-Radial	2	0.002	2	0	0.002
47	272.4	Crack-Radial	3	0.004	5	0	0.004
48	279.7	Crack-Radial	3	0.004	5	0	0.004
49	284.7	Crack-Horizontal	2	0.002	2	0	0.002
50	284.7	Crack-Radial	2	0.002	2	0	0.002
51	287.2	Crack-Horizontal	2	0.002	2	0	0.002
52	288.7	Wye Service	1	0.000	0	0	0.000
53	289.8	Crack-Radial	2	0.002	2	0	0.002
54	291.4	Wye Service	1	0.000	0	0	0.000
55	292.5	Crack-Horizontal	2	0.002	2	0	0.002
56	299.8	Crack-Radial	2	0.002	2	0	0.002
57	302.4	Crack-Horizontal	3	0.004	5	0	0.004
58	312.5	Broken Pipe	2	0.008	44	0	0.008
59	314.9	Crack-Radial	3	0.004	5	0	0.004
60	320.1	Crack-Radial	2	0.002	2	0	0.002
61	327.9	Crack-Radial	2	0.002	2	0	0.002
62	332.3	5348-001 / DS Manhole					