

MH 5448-479
1016 N. Buffum
Approx. MH depth = 5.9 ft

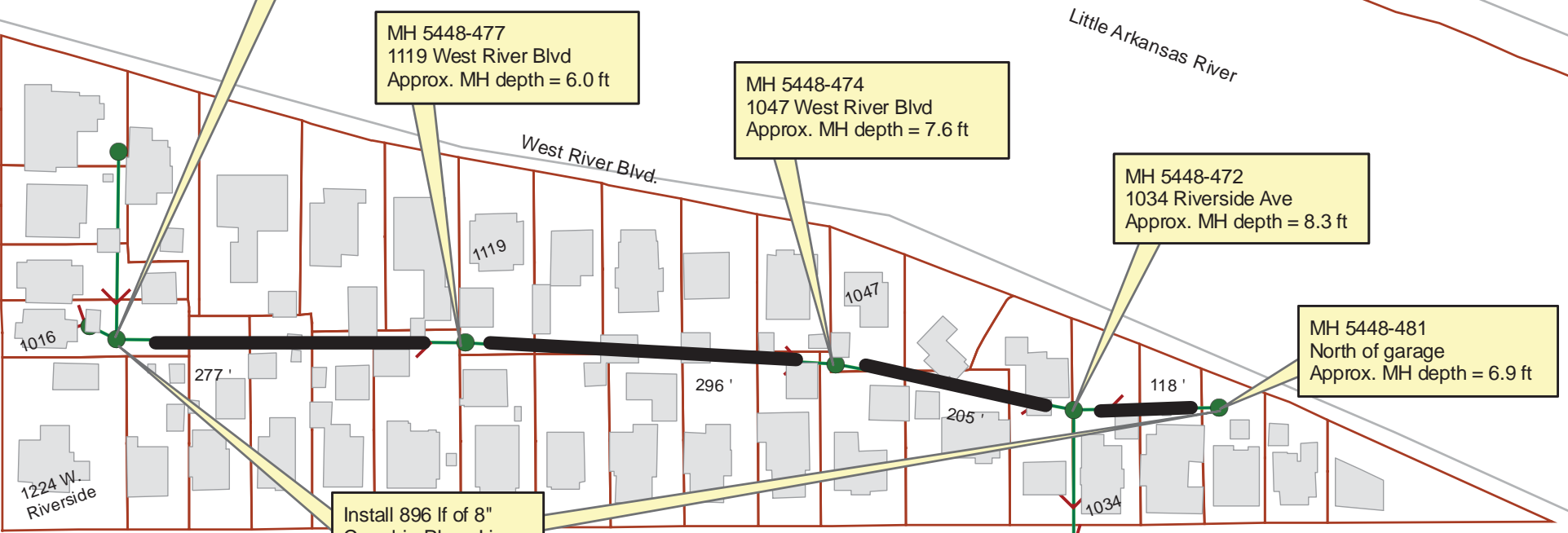
MH 5448-477
1119 West River Blvd
Approx. MH depth = 6.0 ft

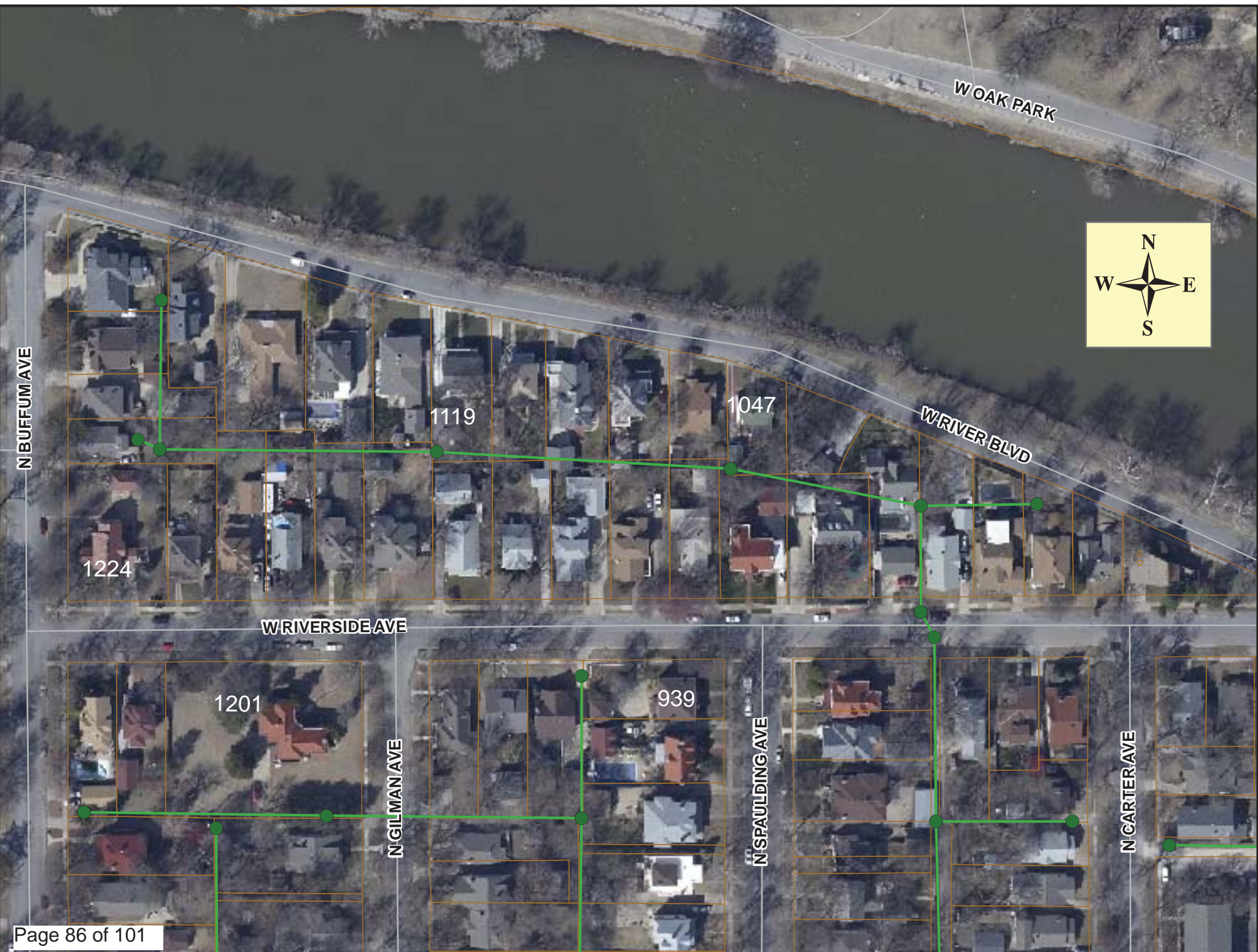
MH 5448-474
1047 West River Blvd
Approx. MH depth = 7.6 ft

MH 5448-472
1034 Riverside Ave
Approx. MH depth = 8.3 ft

MH 5448-481
North of garage
Approx. MH depth = 6.9 ft

Install 896 lf of 8"
Cured-in-Place Liner







Television Inspection Master Report

11/8/2010
8:32 AM

US Structure: 5448-481 1004 W RIVERSIDE AVE Date Insp: 6/25/2010 Basin: C03E
 DS Structure: 5448-472 1034 W RIVERSIDE AVE Dir Televised: Upstream To Downstream

Pipe Information
 Project No.: B-237 Dia: 8 Material: VCP Length: 118.5 Slope: 1.046 Tape ID: DVD #0585

Obs. #	VTR Counter	Distance	Location	Description	Rating	Ratings			Remain (gpm)
						Obsrvd (gpm)	Est. (gpm)	Struct Clean	
1		0.0		5448-481 US Manhole					
2		0.0		Roots	3	0.008	5	8	0.008
3		2.0		Wye Service / ROOTS INSIDE					
4		4.0		Crack-Radial	3	0.004	5	0	0.004
5		10.6		Broken Pipe	2	0.008	44	0	0.008
6		15.7		Crack-Radial	2	0.002	2	0	0.002
7		17.8		Roots	2	0.004	2	4	0.004
8		20.3		Roots	2	0.004	2	4	0.004
9		22.9		Roots	3	0.008	5	8	0.008
10		23.4		Crack-Radial	2	0.002	2	0	0.002
11		25.5		Roots	3	0.008	5	8	0.008
12		25.9		Crack-Radial	2	0.002	2	0	0.002
13		26.9		Wye Service	1	0.000	0	0	0.000
14		28.3		Crack-Horizontal	2	0.002	2	0	0.002
15		30.7		Crack-Horizontal	2	0.002	2	0	0.002
16		31.1		Crack-Radial	2	0.002	2	0	0.002
17		33.3		Crack-Radial	2	0.002	2	0	0.002
18		33.8		Crack-Horizontal	2	0.002	2	0	0.002
19		35.9		Roots	2	0.004	2	4	0.004
20		38.0		Roots	2	0.004	2	4	0.004
21		40.7		Roots	2	0.004	2	4	0.004
22		43.3		Roots	2	0.004	2	4	0.004
23		43.3		Crack-Horizontal	2	0.002	2	0	0.002
24		49.9		Wye Service	1	0.000	0	0	0.000
25		61.2		Crack-Radial	3	0.004	5	0	0.004
26		64.0		Crack-Radial	2	0.002	2	0	0.002
27		69.7		Wye Service					
28		71.5		Crack-Horizontal	4	0.008	10	0	0.008
29		74.0		Broken Pipe	2	0.008	44	0	0.008
30		78.3		Wye Service	1	0.000	0	0	0.000
31		79.5		Crack-Horizontal	2	0.002	2	0	0.002
32		81.8		Crack-Horizontal	2	0.002	2	0	0.002
33		86.6		Crack-Horizontal	2	0.002	2	0	0.002
34		87.1		Crack-Radial	2	0.002	2	0	0.002
35		91.7		Crack-Radial	2	0.002	2	0	0.002
36		99.6		Crack-Radial	2	0.002	2	0	0.002
37		100.0		Break-In Conn					
38		101.7		Crack-Radial	3	0.004	5	0	0.004
39		104.2		Crack-Radial	2	0.002	2	0	0.002
40		106.9		Crack-Radial	2	0.002	2	0	0.002
41		109.4		Crack-Horizontal	2	0.002	2	0	0.002
42		112.3		Crack-Radial	2	0.002	2	0	0.002
43		116.5		DS Manhole 5448-472					

PIPE NEEDS LINED FOR ROOTS.



Television Inspection Master Report

11/8/2010
8:34 AM

US Structure: 5448-479 1016 N BUFFUM ST Date Insp: 6/25/2010 Basin: C03E
 DS Structure: 5448-477 1119 W RIVER BLVD Dir Televised: Upstream To Downstream

Pipe Information
 Project No.: B-237 Dia: 8 Material: VCP Length: 277.0 Slope: 0.400 DVD #0585

Obs. #	VTR	Counter	Distance	Location	Description	Rating	Ratings			
							Obsrvd (gpm)	Est. (gpm)	Struct	Clean
1			0.0		5448-479 US Manhole	2	0.002	2	0	0.002
2			0.0		Crack-Radial	2	0.000	0	0	0.000
3			15.5		Wye Service	1	0.000	0	0	0.000
4			18.0		Wye Service	1	0.000	0	0	0.000
5			19.0		Crack-Horizontal	3	0.004	5	0	0.004
6			21.6		Crack-Horizontal	3	0.004	5	0	0.004
7			26.9		Broken Pipe	3	0.010	60	0	0.010
8			32.0		Broken Pipe	2	0.008	44	0	0.008
9			34.8		Crack-Radial	2	0.002	2	0	0.002
10			37.0		Crack-Radial	3	0.004	5	0	0.004
11			39.2		Roots	2	0.004	2	4	0.004
12			39.7		Broken Pipe	2	0.008	44	0	0.008
13			42.3		Broken Pipe	2	0.008	44	0	0.008
14			43.0		Wye Service	3	0.000	2	0	0.000
1214 W RIVERSIDE AVE										
15			44.8		Broken Pipe	2	0.008	44	0	0.008
16			46.2		Wye Service	1	0.000	0	0	0.000
17			47.6		Crack-Radial	2	0.002	2	0	0.002
18			51.1		Crack-Horizontal	2	0.002	2	0	0.002
19			52.1		Crack-Horizontal	3	0.004	5	0	0.004
20			54.5		Crack-Horizontal	2	0.002	2	0	0.002
21			55.0		Crack-Radial	2	0.002	2	0	0.002
22			57.3		Crack-Radial	2	0.002	2	0	0.002
23			60.1		Crack-Radial	2	0.002	2	0	0.002
24			62.4		Broken Pipe	2	0.008	44	0	0.008
25			68.3		Crack-Radial	2	0.002	2	0	0.002
26			68.3		Wye Service	1	0.000	0	0	0.000
1210 W RIVERSIDE AVE										
27			70.1		Crack-Horizontal	2	0.002	2	0	0.002
28			71.4		Wye Service	1	0.000	0	0	0.000
29			72.4		Broken Pipe	2	0.008	44	0	0.008
30			80.3		Crack-Radial	2	0.002	2	0	0.002
31			85.3		Crack-Radial	2	0.002	2	0	0.002
32			87.7		Crack-Radial	3	0.004	5	0	0.004
33			95.4		Crack-Horizontal	2	0.002	2	0	0.002
34			96.4		Wye Service	1	0.000	0	0	0.000
35			99.2		Wye Service	1	0.000	0	0	0.000
36			100.3		Crack-Horizontal	2	0.002	2	0	0.002
37			102.6		Crack-Horizontal	2	0.002	2	0	0.002
38			105.3		Crack-Horizontal	2	0.002	2	0	0.002



Television Inspection Master Report

11/8/2010
8:34 AM

US Structure:	5448-479	1016 N BUFFUM ST	Date Insp:	6/25/2010	Basin:	C03E		
DS Structure:	5448-477	1119 W RIVER BLVD	Dir Televised:	Upstream To Downstream				
39	107.9		Crack-Horizontal	2	0.002	2	0	0.002
40	110.5		Observation Hole	1	0.000	0	0	0.000
41	117.6		Crack-Horizontal	2	0.002	2	0	0.002
42	120.1		Crack-Horizontal	2	0.002	2	0	0.002
43	122.8		Broken Pipe	3	0.010	60	0	0.010
44	127.7		Crack-Radial	3	0.004	5	0	0.004
45	129.2		Wye Service	1	0.000	0	0	0.000
1206 W RIVERSIDE AVE								
46	130.1		Crack-Radial	2	0.002	2	0	0.002
47	131.5		Wye Service	3	0.000	2	0	0.000
1141 E RIVER BLVD								
48	140.3		Crack-Radial	3	0.004	5	0	0.004
49	143.0		Crack-Radial	2	0.002	2	0	0.002
50	148.3		Broken Pipe	2	0.008	44	0	0.008
51	150.5		Crack-Radial	2	0.002	2	0	0.002
52	157.0		Wye Service	1	0.000	0	0	0.000
53	158.2		Crack-Radial	2	0.002	2	0	0.002
54	159.5		Wye Service	2	0.000	0	0	0.000
1131 W RIVER BLVD								
55	160.9		Crack-Horizontal	2	0.002	2	0	0.002
56	173.2		Broken Pipe	3	0.010	60	0	0.010
57	173.7		PVC Break-In Conn	1	0.001	0	0	0.001
1131 W RIVER BLVD								
58	179.7		Wye Service / ROOTS	2	0.000	0	0	0.000
1204 W RIVERSIDE AVE								
59	182.1		Wye Service	1	0.000	0	0	0.000
60	185.7		Crack-Horizontal	2	0.002	2	0	0.002
61	207.4		Wye Service	1	0.000	0	0	0.000
62	208.8		Crack-Horizontal	2	0.002	2	0	0.002
63	209.9		Wye Service	1	0.000	0	0	0.000
64	221.2		Crack-Radial	2	0.002	2	0	0.002
65	229.1		Break-In Conn	1	0.001	0	0	0.001
1125 W RIVER BLVD								
66	231.1		Crack-Radial	3	0.004	5	0	0.004
67	232.2		Wye Service	4	0.000	60	0	0.000
1200 W RIVERSIDE AVE / Pipe missing inside the wye connection / needs repair in the future Tap has been repaired								
68	235.1		Wye Service	1	0.000	0	0	0.000
1125 W RIVER BLVD								
69	236.3		Crack-Radial	3	0.004	5	0	0.004
70	238.1		Break-In Conn	3	0.004	2	0	0.004
1200 W RIVERSIDE AVE								
71	238.5		Crack-Radial	2	0.002	2	0	0.002
72	241.0		Roots	2	0.004	2	4	0.004



Wichita Water Utilities — Connect With Us!

Television Inspection Master Report

11/8/2010

8:34 AM

US Structure: 5448-479 1016 N BUFFUM ST Date Insp: 6/25/2010 Basin: C03E
 DS Structure: 5448-477 1119 W RIVER BLVD Dir Televised: Upstream To Downstream

73	241.0	Crack-Radial	3	0.004	5	0	0.004
74	248.7	Crack-Radial	3	0.004	5	0	0.004
75	250.9	Roots	3	0.008	5	8	0.008
76	253.5	Roots	2	0.004	2	4	0.004
77	255.8	Broken Pipe / Invert / ok to line pipe	4	0.030	78	0	0.030
78	257.5	Wye Service	1	0.000	0	0	0.000
79	258.4	Roots	3	0.008	5	8	0.008
80	259.1	Crack-Radial	2	0.002	2	0	0.002
81	260.1	Wye Service	1	0.000	0	0	0.000
82	260.1	Other	1	0.000	0	0	0.000
83	261.6	Crack-Radial	2	0.002	2	0	0.002
84	264.1	Crack-Radial	2	0.002	2	0	0.002
85	266.6	Crack-Radial	2	0.002	2	0	0.002
86	269.1	Crack-Radial	2	0.002	2	0	0.002
87	271.2	Roots	2	0.004	2	4	0.004
88	272.0	Crack-Radial	2	0.002	2	0	0.002
89	277.2	5448-477 DS Manhole	3	0.000	0	0	0.000

PIPE HAS A LOT OF ROOTS THAT ARE NOT LISTED ON THE LOG.



Television Inspection Master Report

11/8/2010
8:34 AM

US Structure: 5448-477 1119 W RIVER BLVD Date Insp: 6/25/2010 Basin: C03E
 DS Structure: 5448-474 1047 W RIVER BLVD Dir Televised: Upstream To Downstream

Pipe Information
 Project No.: B-237 Dia: 8 Material: VCP Length: 296.0 Slope: 0.400 DVD #0585

Obs. #	VTR Counter	Distance	Location	Description	Rating	Ratings				
						Obsrvd (gpm)	Est. (gpm)	Struct	Clean	Remain (gpm)
1		0.0		5448-477 US Manhole						
2		3.0		Crack-Horizontal	2	0.002		2	0	0.002
3		5.3		Crack-Horizontal	2	0.002		2	0	0.002
4		6.3		Wye Service	1	0.000		0	0	0.000
1136 W RIVERSIDE AVE										
5		7.8		Crack-Horizontal	2	0.002		2	0	0.002
6		8.4		Broken Pipe	3	0.010		60	0	0.010
7		8.4		Crack-Radial	3	0.004		5	0	0.004
8		9.7		Wye Service	1	0.000		0	0	0.000
9		10.6		Crack-Radial	3	0.004		5	0	0.004
10		13.2		Crack-Radial	3	0.004		5	0	0.004
11		18.4		Crack-Radial	3	0.004		5	0	0.004
12		20.5		Crack-Horizontal	2	0.002		2	0	0.002
13		25.8		Crack-Radial	2	0.002		2	0	0.002
14		28.1		Crack-Radial	3	0.004		5	0	0.004
15		31.0		Crack-Radial	2	0.002		2	0	0.002
16		33.5		Crack-Radial	2	0.002		2	0	0.002
17		34.7		Wye Service	1	0.000		0	0	0.000
18		34.7		PVC STARTS	2	0.000		0	0	0.000
19		36.2		PVC Break-In Conn	1	0.001		0	0	0.001
1119 W RIVER BLVD										
20		37.0		PVC ENDS	1	0.000		0	0	0.000
21		38.4		Crack-Radial	2	0.002		2	0	0.002
22		41.2		Crack-Radial	2	0.002		2	0	0.002
23		46.1		Roots	2	0.004		2	4	0.004
24		46.1		Crack-Horizontal	2	0.002		2	0	0.002
25		48.3		Roots	3	0.008		5	8	0.008
26		50.9		Roots	3	0.008		5	8	0.008
27		53.3		Roots	3	0.008		5	8	0.008
28		53.7		Crack-Radial	2	0.002		2	0	0.002
29		55.8		Roots	3	0.008		5	8	0.008
30		58.4		Roots	3	0.008		5	8	0.008
31		60.7		Roots	3	0.008		5	8	0.008
32		61.2		Crack-Radial	2	0.002		2	0	0.002
33		62.5		Wye Service	1	0.000		0	0	0.000
34		63.5		Roots	3	0.008		5	8	0.008
35		64.3		Wye Service	2	0.000		0	0	0.000
36		65.8		Roots	3	0.008		5	8	0.008
37		68.4		Roots	3	0.008		5	8	0.008
38		71.0		Roots	3	0.008		5	8	0.008



Television Inspection Master Report

11/8/2010
8:34 AM

US Structure:	5448-477	1119 W RIVER BLVD	Date Insp:	6/25/2010	Basin:	C03E		
DS Structure:	5448-474	1047 W RIVER BLVD	Dir Televised:	Upstream To Downstream				
39	73.5		Roots	3	0.008	5	8	0.008
40	76.1		Roots	3	0.008	5	8	0.008
41	78.4		Roots	3	0.008	5	8	0.008
42	79.0		Crack-Radial	2	0.002	2	0	0.002
43	79.0		Observation Hole	2	0.000	0	0	0.000
44	80.9		Roots	2	0.004	2	4	0.004
45	81.3		Crack-Radial	2	0.002	2	0	0.002
46	83.4		Crack-Radial	2	0.002	2	0	0.002
47	85.9		Roots	3	0.008	5	8	0.008
48	87.7		Wye Service	2	0.000	0	0	0.000
1120 W RIVERSIDE AVE								
49	88.6		Roots	3	0.008	5	8	0.008
50	88.8		Crack-Radial	3	0.004	5	0	0.004
51	90.2		Wye Service	2	0.000	0	0	0.000
1117 W RIVER BLVD								
52	91.5		Crack-Radial	2	0.002	2	0	0.002
53	93.6		Crack-Radial	3	0.004	5	0	0.004
54	96.4		Crack-Horizontal	2	0.002	2	0	0.002
55	98.6		Roots	2	0.004	2	4	0.004
56	98.6		Crack-Radial	3	0.004	5	0	0.004
57	101.2		Crack-Radial	3	0.004	5	0	0.004
58	103.5		Roots	2	0.004	2	4	0.004
59	103.6		Crack-Horizontal	2	0.002	2	0	0.002
60	106.1		Crack-Radial	3	0.004	5	0	0.004
61	108.8		Crack-Radial	2	0.002	2	0	0.002
62	111.2		Crack-Radial	2	0.002	2	0	0.002
63	112.6		Wye Service	1	0.000	0	0	0.000
64	113.8		Crack-Horizontal	3	0.004	5	0	0.004
65	115.1		Wye Service	1	0.000	0	0	0.000
66	116.1	Joint	Offset	2	0.000	0	0	0.000
67	116.1		Crack-Radial	2	0.002	2	0	0.002
68	116.5		Crack-Radial	2	0.002	2	0	0.002
69	117.3		Wye Service	3	0.000	2	0	0.000
1115 W RIVER BLVD								
70	119.0		Crack-Horizontal	2	0.002	2	0	0.002
71	121.4		Crack-Horizontal	2	0.002	2	0	0.002
72	133.8		Crack-Radial	2	0.002	2	0	0.002
73	133.8		Crack-Horizontal	2	0.002	2	0	0.002
74	136.3		Crack-Horizontal	2	0.002	2	0	0.002
75	139.0		Crack-Horizontal	2	0.002	2	0	0.002
76	139.0		Crack-Radial	2	0.002	2	0	0.002
77	139.8		PVC Break-In Conn	1	0.001	0	0	0.001
1108 W RIVERSIDE AVE								
78	141.3		Crack-Horizontal	2	0.002	2	0	0.002
79	142.9		Wye Service	1	0.000	0	0	0.000
80	144.2		Crack-Radial	3	0.004	5	0	0.004
81	146.5		Crack-Radial	3	0.004	5	0	0.004



Television Inspection Master Report

11/8/2010

8:34 AM

US Structure: 5448-477 1119 W RIVER BLVD Date Insp: 6/25/2010 Basin: C03E
 DS Structure: 5448-474 1047 W RIVER BLVD Dir Televised: Upstream To Downstream

82	151.5	Crack-Radial	3	0.004	5	0	0.004
83	153.7	Crack-Horizontal	3	0.004	5	0	0.004
84	154.2	Crack-Radial	3	0.004	5	0	0.004
85	156.9	Crack-Radial	2	0.002	2	0	0.002
86	159.1	Crack-Radial	2	0.002	2	0	0.002
87	164.3	Crack-Radial	2	0.002	2	0	0.002
88	165.5	Wye Service	1	0.000	0	0	0.000
89	167.1	Broken Pipe	2	0.008	44	0	0.008
90	168.2	Wye Service	1	0.000	0	0	0.000
91	169.1	Crack-Radial	3	0.004	5	0	0.004
92	169.7	Observation Hole	2	0.000	0	0	0.000
93	171.7	Crack-Radial	3	0.004	5	0	0.004
94	174.0	Crack-Horizontal	2	0.002	2	0	0.002
95	176.7	Crack-Radial	2	0.002	2	0	0.002
96	182.0	Crack-Horizontal	2	0.002	2	0	0.002
97	184.4	Crack-Radial	2	0.002	2	0	0.002
98	193.3	Wye Service	3	0.000	2	0	0.000
1106 W RIVERSIDE AVE							
99	194.6	Crack-Radial	2	0.002	2	0	0.002
100	195.7	Wye Service	1	0.000	0	0	0.000
101	196.5	Crack-Horizontal	2	0.002	2	0	0.002
102	199.4	Crack-Horizontal	3	0.004	5	0	0.004
103	201.9	Crack-Horizontal	2	0.002	2	0	0.002
104	204.2	Crack-Horizontal	2	0.002	2	0	0.002
105	206.6	Crack-Radial	2	0.002	2	0	0.002
106	209.1	Crack-Horizontal	2	0.002	2	0	0.002
107	211.9	Crack-Horizontal	2	0.002	2	0	0.002
108	214.4	Crack-Radial	2	0.002	2	0	0.002
109	218.4	Wye Service	1	0.000	0	0	0.000
110	219.7	Crack-Horizontal	2	0.002	2	0	0.002
111	220.3	Wye Service	3	0.000	2	0	0.000
1111 W RIVER BLVD							
112	224.5	Broken Pipe	2	0.008	44	0	0.008
113	227.3	Crack-Radial	2	0.002	2	0	0.002
114	234.9	Crack-Radial	2	0.002	2	0	0.002
115	239.6	Crack-Radial	2	0.002	2	0	0.002
116	242.5	Crack-Radial	2	0.002	2	0	0.002
117	243.5	Wye Service	1	0.000	0	0	0.000
118	246.4	Wye Service	1	0.000	0	0	0.000
119	247.6	Crack-Horizontal	2	0.002	2	0	0.002
120	265.2	Broken Pipe	3	0.010	60	0	0.010
121	267.7	Roots	2	0.004	2	4	0.004
122	270.7	Crack-Radial	2	0.002	2	0	0.002
123	270.8	Wye Service / ROOTS	2	0.000	0	0	0.000
1104 W RIVERSIDE AVE							



Television Inspection Master Report

11/8/2010
8:34 AM

US Structure:	5448-477	1119 W RIVER BLVD	Date Insp:	6/25/2010	Basin:	C03E		
DS Structure:	5448-474	1047 W RIVER BLVD	Dir Televised:	Upstream To Downstream				
124	273.2		Crack-Radial	2	0.002	2	0	0.002
125	273.5		PVC Break-In Conn	1	0.001	0	0	0.001
1107 W RIVER BLVD								
126	275.4		Crack-Radial	2	0.002	2	0	0.002
127	277.8		Crack-Radial	3	0.004	5	0	0.004
128	280.2		Roots	2	0.004	2	4	0.004
129	282.8		Roots	3	0.008	5	8	0.008
130	285.0		Roots	3	0.008	5	8	0.008
131	285.6		Crack-Radial	2	0.002	2	0	0.002
132	288.4		Break-In Conn	4	0.008	60	0	0.008
1047 W RIVERSIDE AVE								
133	290.3		Broken Pipe	4	0.030	78	0	0.030
134	292.2		Debris	3	0.000	0	0	0.000
135	293.9	BRICK TROUGH	5448-474 DS Manhole	3	0.000	0	0	0.000



US Structure: 5448-474 1047 W RIVER BLVD Date Insp: 6/25/2010 Basin: C03E
 DS Structure: 5448-472 1034 W RIVERSIDE AVE Dir Televised: Upstream To Downstream

Pipe Information

Shape: Round Length Status: Project No. : B-237
 Dia/Ht: 8 Material: VCP Index:
 Length: 205.5 Slope: 0.400 Surface:

Inspection Information

Crew: 690 Percent Full: Tape ID: DVD #0585

Obs. #	VTR Counter	Distance	Location	Description	Rating	Obsrvd (gpm)	Est. (gpm)	Struct	Clean	Remain (gpm)
1		0.0		US Manhole						
2		5.1		Crack-Radial	2	0.002	0.002	2	0	0.002
3		6.6		Wye Service	1	0.000	0.000	0	0	0.000
4		7.6		Roots	3	0.008	0.008	5	8	0.008
5		7.8		Crack-Radial	2	0.002	0.002	2	0	0.002
6		9.7		Roots	2	0.004	0.004	2	4	0.004
7		12.4		Roots	3	0.008	0.008	5	8	0.008
8		12.6		Crack-Horizontal	2	0.002	0.002	2	0	0.002
9		17.8		Crack-Radial	2	0.002	0.002	2	0	0.002
10		25.1		Crack-Radial	2	0.002	0.002	2	0	0.002
11		27.6		Crack-Radial	2	0.002	0.002	2	0	0.002
12		30.4		Broken Pipe	2	0.008	0.008	44	0	0.008
13		30.4		Break-In Conn	2	0.002	0.002	0	0	0.002
1100 W RIVERSIDE AVE										
14		34.0		Wye Service	1	0.000	0.000	0	0	0.000
15		35.2		Crack-Radial	2	0.002	0.002	2	0	0.002
16		37.9		Break-In Conn	5	0.010	0.010	400	0	0.010
1047 W RIVER BLVD / BROKEN PIPE / TAPS NEEDS REPLACED AFTER CIPP INSTALLATION										
17		56.5		Wye Service	1	0.000	0.000	0	0	0.000
18		57.7		Crack-Radial	2	0.002	0.002	2	0	0.002
19		59.0		Wye Service	1	0.000	0.000	0	0	0.000
20		60.1		Broken Pipe	2	0.008	0.008	44	0	0.008
21		60.6		Observation Hole	1	0.000	0.000	0	0	0.000
22		62.7		Crack-Radial	2	0.002	0.002	2	0	0.002
23		62.7		Crack-Horizontal	2	0.002	0.002	2	0	0.002
24		72.4		INVERT/Broken Pipe	4	0.030	0.030	78	0	0.030
25		72.8		Crack-Radial	2	0.002	0.002	2	0	0.002
26		84.0		Wye Service	1	0.000	0.000	0	0	0.000
27		85.3		Crack-Radial	2	0.002	0.002	2	0	0.002
28		86.4		Wye Service	1	0.000	0.000	0	0	0.000
29		110.2		Crack-Radial	2	0.002	0.002	2	0	0.002
30		111.4		Wye Service	1	0.000	0.000	0	0	0.000



Television Inspection Master Report

11/8/2010
8:33 AM

US Structure:	5448-474	1047 W RIVER BLVD	Date Insp:	6/25/2010	Basin:	C03E
DS Structure:	5448-472	1034 W RIVERSIDE AVE	Dir Televised:	Upstream To Downstream		
31	112.5		Crack-Radial	2	0	0.002
32	113.4		Wye Service	1	0	0.000
1053 W RIVER BLVD						
33	115.6		Crack-Horizontal	2	0	0.002
34	117.7		Crack-Radial	2	0	0.002
35	122.6		Crack-Radial	3	0	0.004
36	125.4		Crack-Radial	2	0	0.002
37	126.1		Break-In Conn	5	0	0.010
1040 W RIVERSIDE AVE / BROKEN OFF MAIN / TAP NEEDS REPLACED						
38	128.0		Crack-Radial	3	5	0.004
39	130.4		Crack-Radial	2	2	0.002
40	133.0		Crack-Radial	3	5	0.004
41	135.5		Crack-Radial	3	5	0.004
42	137.0		Wye Service	1	0	0.000
43	139.3		Wye Service	1	0	0.000
44	140.9		Broken Pipe	2	0	0.008
45	145.7		Crack-Radial	3	5	0.004
46	148.3		Crack-Radial	2	2	0.002
47	158.5		Crack-Horizontal	3	5	0.004
48	160.3		Broken Pipe	5	100	0.060
49	160.7		Broken Pipe / HOLE IN SIDE OF PIPE	4	78	0.030
50	164.8		Wye Service	1	0	0.000
51	166.2		Crack-Radial	3	5	0.004
52	167.3		Wye Service	1	0	0.000
53	171.1		Crack-Horizontal	2	2	0.002
54	180.2	CROWN	Break-In Conn	3	2	0.004
1027 W RIVERSIDE AVE						
55	183.9		Crack-Radial	2	2	0.002
56	186.3		Crack-Radial	3	5	0.004
57	188.8		Crack-Radial	3	5	0.004
58	192.6		Wye Service	1	0	0.000
59	193.9		Crack-Radial	3	5	0.004
60	195.2		Wye Service	1	0	0.000
61	198.7		Broken Pipe / SIDE OF PIPE SHIFTED SLIGHTLY	5	100	0.060
62	200.4		Crack-Radial	3	5	0.004
63	201.5		Debris	0	0	0.000
64	201.5		5448-472 DS Manhole	3	0	0.000