

STORMWATER SEWER TO SERVE YMCA SOUTH ADDITION

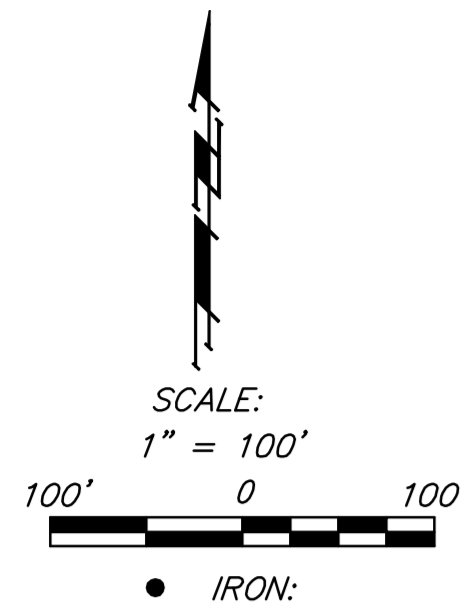
Lots 1-4, Block 1

Private Project: 0016 PPD (607861)

CITY OF WICHITA, KANSAS

James Armour, P.E. City Engineer

APRIL 2011



Benchmarks

SITE BENCHMARK-1
 "L" cut West Side of Light Pole Base,
 Northeast of drive to site parking lot.
 Elev. = 100.19 (City) 1298.05 (NAVD 88)

Legal Description

A PORTION OF YMCA SOUTH ADDITION LOT 4 OF
 BLOCK 1 IN WICHITA, KANSAS OF SEDGWICK COUNTY
 KANSAS.

Index

Title Sheet	1
Overall Grading Plan	2
Line 1	3
Grading Plan	4
Erosion Control Plan	5
Copy of Plat	6
BMP Erosion Details	Available On Request

APPROVED AS NOTED
 BY CITY ENGINEER OF WICHITA

Engineering *Julaine Kallman* 4-11-12

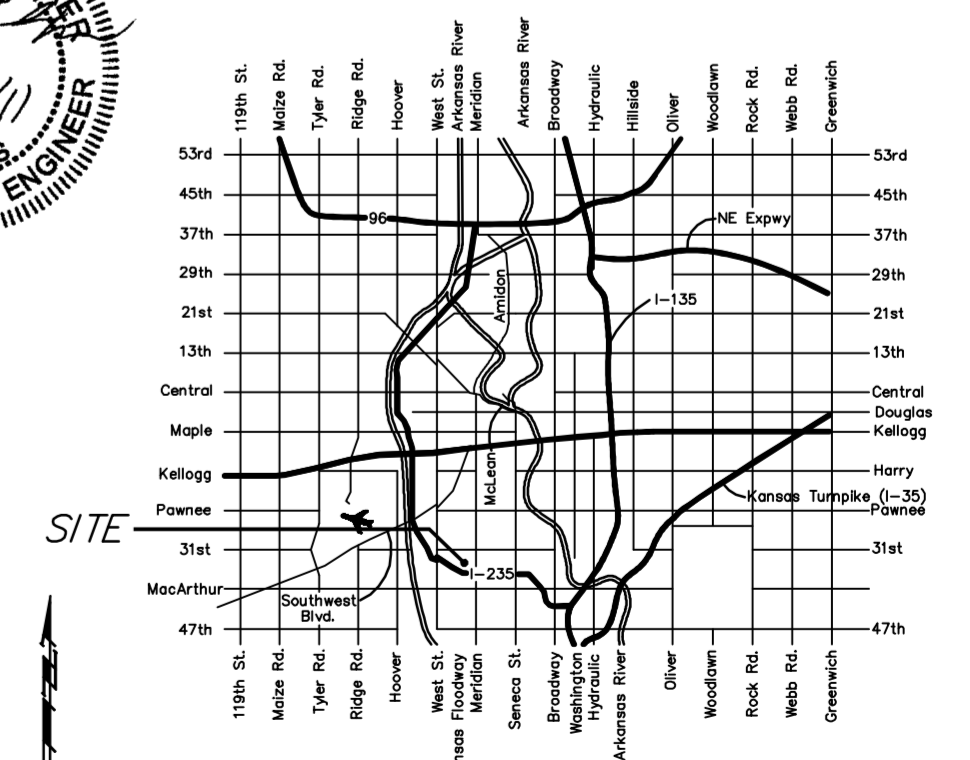
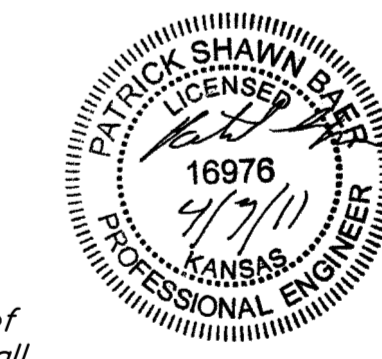
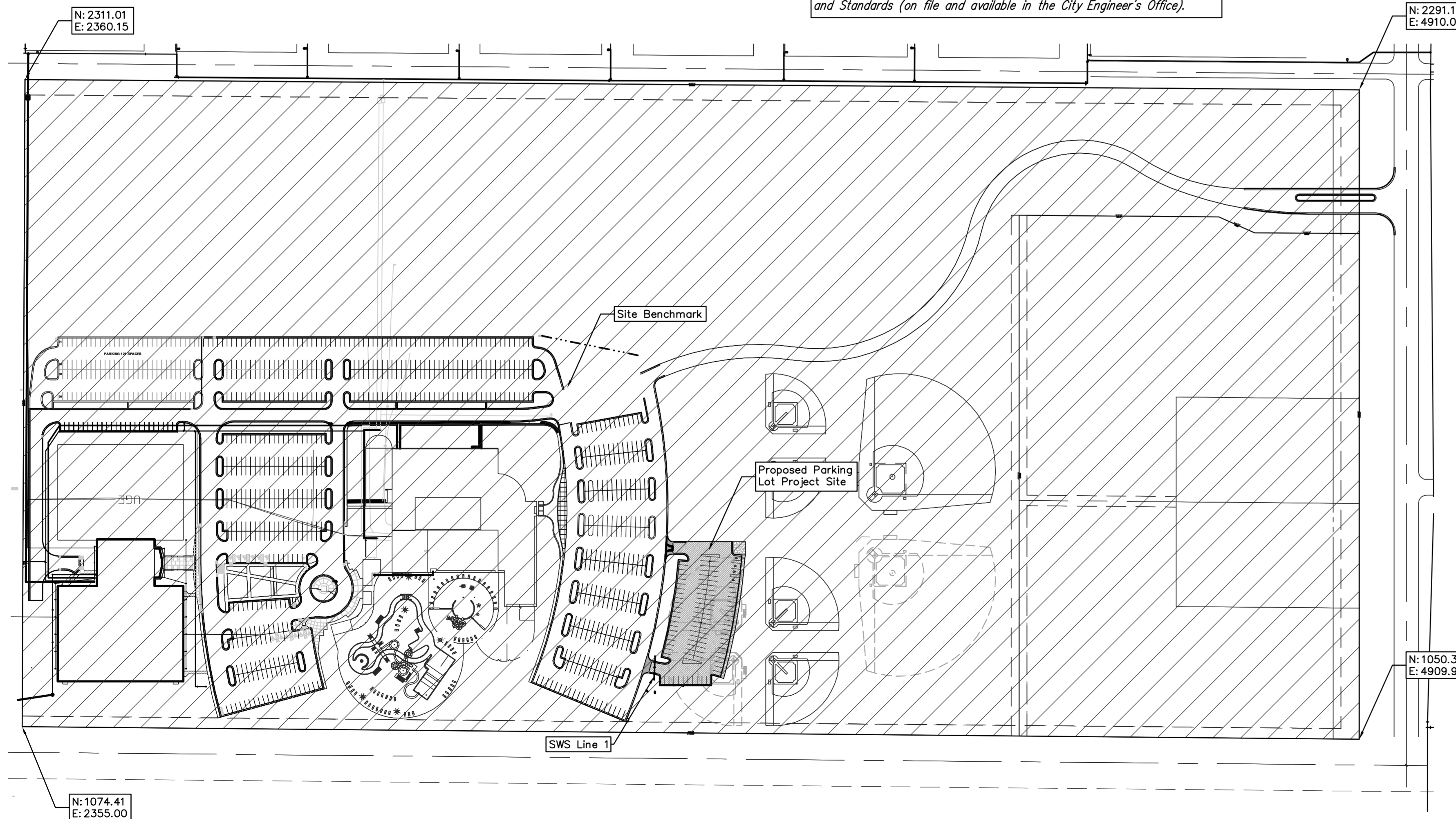
Storm Drainage *AAA* 04-11-12

NOTE TO CONTRACTORS

Installation, inspection and testing for this project is to be provided by a Licensed Consulting Engineering Firm under contract with the Owner/Developer. Said inspection to be in accordance with the City of Wichita standard construction engineering practices and certified by a Licensed Professional Engineer. No work shall be performed in dedicated easements or public right-of-way by the Contractor without such inspection nor shall any work be commenced without written authorization by the City Engineer. All Construction and Materials shall comply with the City of Wichita Specifications and Standards (on file and available in the City Engineer's Office).

General Notes

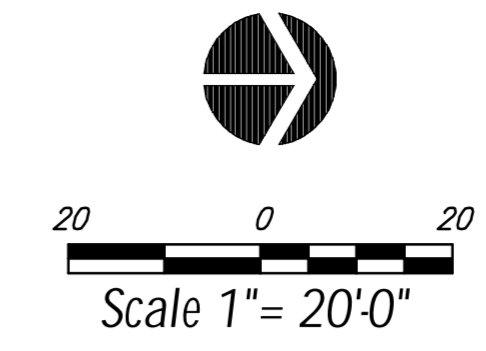
- Contractor will be required to provide notice to utility companies a minimum of forty-eight (48) hours prior to any excavation, as follows:
 Kansas One-Call 687-2470
 The Contractor must notify the following in case of an emergency:
 Cox Communications 262-4270
 Kansas Gas Service Company 1-888-482-4950
 Westar Energy (Electric) 383-8650
 Black Hills Energy (Gas) 1-800-303-0357
 Southwestern Bell Telephone Co. 1-800-286-8313
 City of Wichita Water Dept. (Water) 262-6000
 City of Wichita Sewer Maint. (SS) 262-6000
 City of Wichita Storm Sewer Maint. 268-4090
 City of Wichita Traffic Maint. 268-4034
- All disturbed R/W areas not intended for pavement or sidewalk construction shall be seeded with Kansas Premium Fescue Blend at a rate of 8 lb./1000 Sq. Ft., fertilized with a 16-20-6 ratio at a rate of 4 lb./1000 Sq. Ft., and mulched with Prairie Hay at a rate of 92 lb./1000 Sq. Ft. Mulch shall be "patted" with forks or punched into soil to reduce loss due to wind.
- Utility service lines, poles, valve boxes, meters, et cetera are to be adjusted as necessary by others prior to construction unless the plans specifically call for their adjustment by the Contractor or unless the plans specifically identify a utility to be adjusted by its owner during construction. Existing utilities and their location, as shown on the plans represent the best information obtainable for design and shall be field verified. The contractor will be required to work around existing utilities within the right-of-way which do not conflict with proposed construction.
- Contractor shall furnish the inspector with a copy of the manufacturer's certification for all pipe used on this project after completion of pipe installation. The engineer will not certify the project to the city until pipe certification has been received.
- Properties within the project limits may have underground sprinkler systems which conflict with new construction. Contractor will be required to remove such improvements should they not be removed by their owner at the time of construction. The Contractor will be required to salvage all sprinkler heads and/or valves and give such material to their owner. Portions of underground sprinkler systems not in conflict with new construction shall be protected from damage and shall remain in place. All work in connection with underground sprinkler systems shall be considered as subsidiary to the contract pay items of work.
- Cuts made to paved surfaces on public property will be repaired by the City's contractor and charged against the owner/applicant. Unit repair prices are available from the City at 268-4418. A surcharge may be applicable; call 268-4418 for details. Repair costs to be paid prior to release of sewer service if sewer service is affected. Contractor shall obtain permit prior to construction.
- Barriers and detour signage shall be in accordance with the Manual On Uniform Traffic Control Devices.
- Contractor shall not start work on the project until the project inspector is assigned to the project and is present on the site. Contractor shall not start on the project until all necessary bonds and permits have been obtained. Bonds may include but are not limited to Statutory, Performance & Maintenance Any work done without inspection will be required to be uncovered for inspection.
- Rubble from the removal of miscellaneous structures and excess excavation which is to be wasted shall be disposed of on sites to be provided by the Contractor. These sites shall be approved by the Engineer as to suitability, appearance and site location. Locations that, in the opinion of the Engineer, will leave an unsightly appearance will not be approved. All disposal sites must be approved by the Kansas Department of Health and Environment. Material either stockpiled or disposed of in a flood plain would require a Kansas State Board of Agriculture permit. Any material dumped in waters of the United States or wetlands is subject to U.S. Corps. of Engineers permitting regulations. Any material buried or stockpiled beyond approved construction limits would require additional archaeological investigations unless buried in a previously approved borrow location.
- All storm water sewer lines and appurtenances shall be installed in accordance with the most recent edition of City of Wichita, Kansas Standard Specifications for the Construction of City Projects unless otherwise noted.
- All storm water sewer lines shall be reinforced concrete pipe unless otherwise noted in the plans.



Benefit District

BENCHMARK

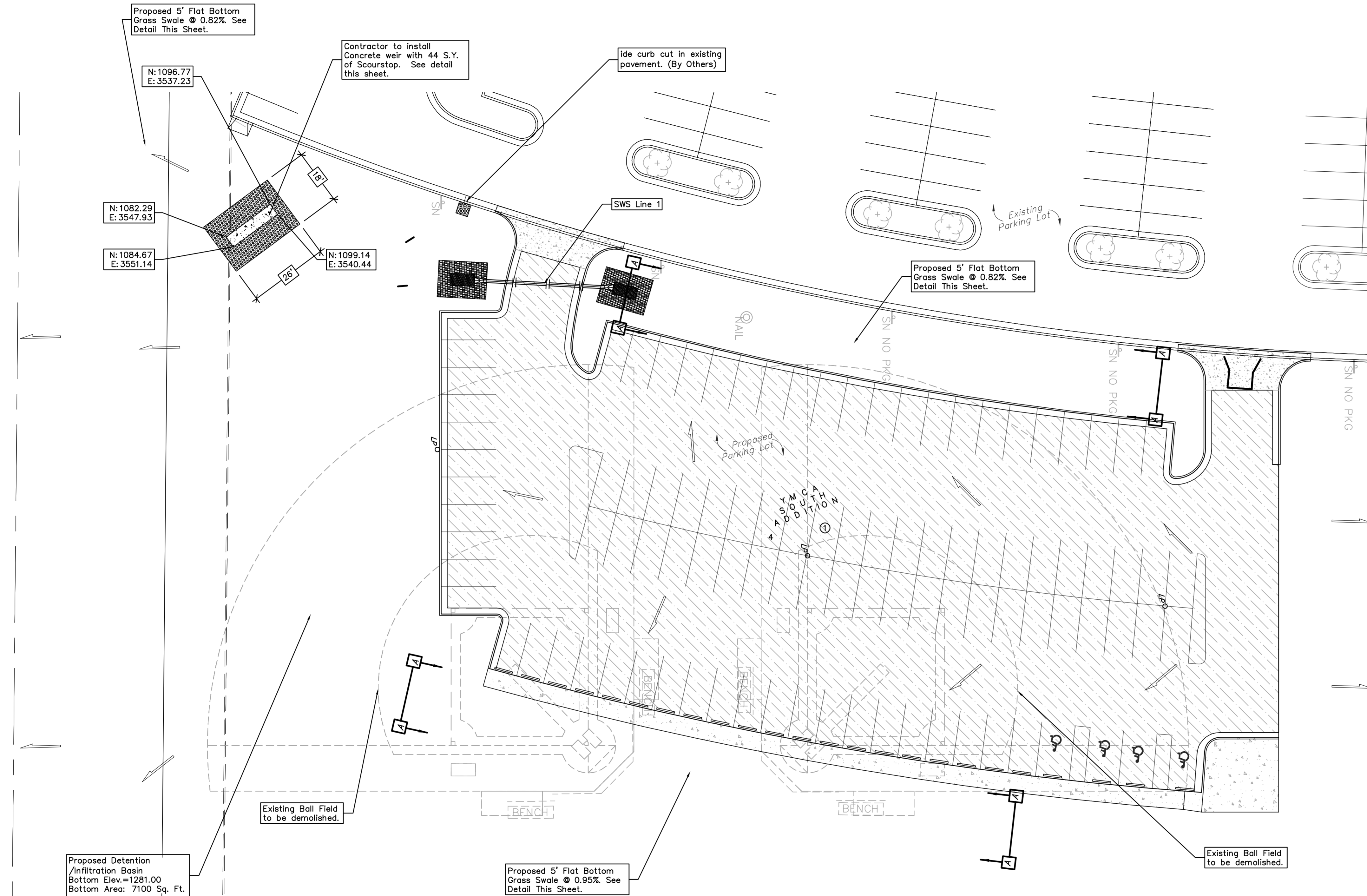
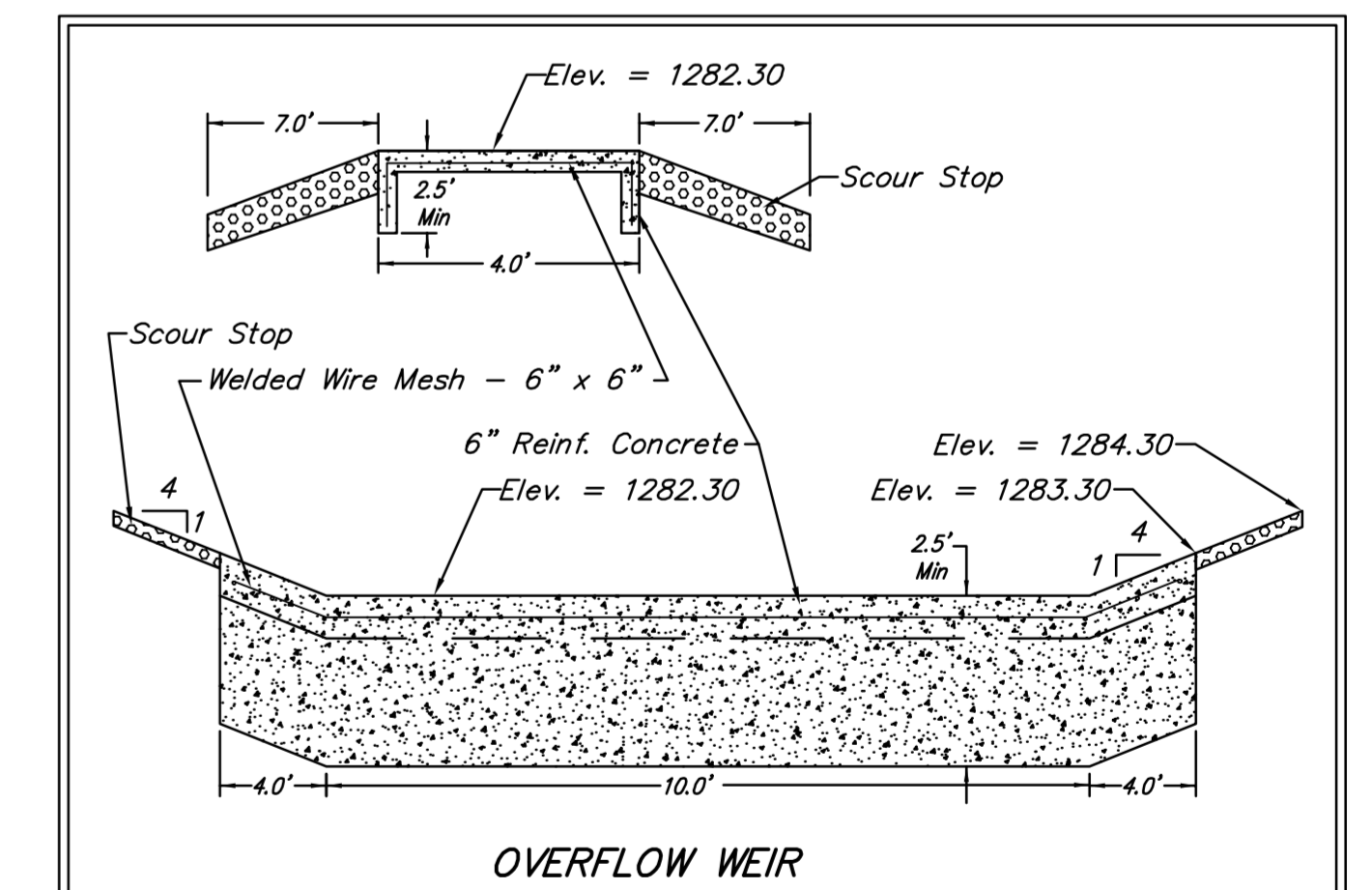
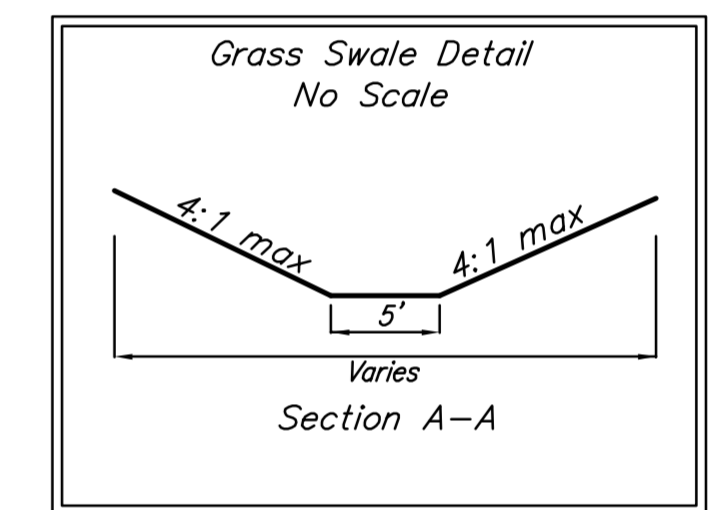
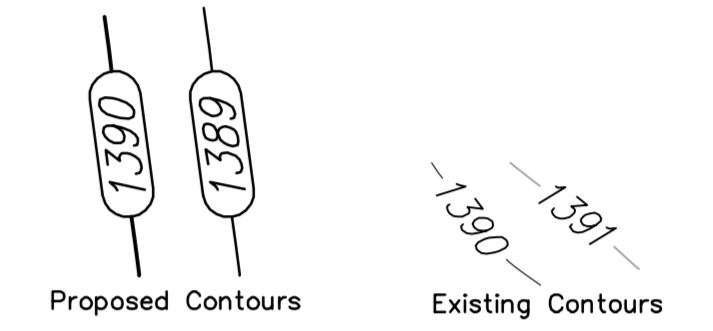
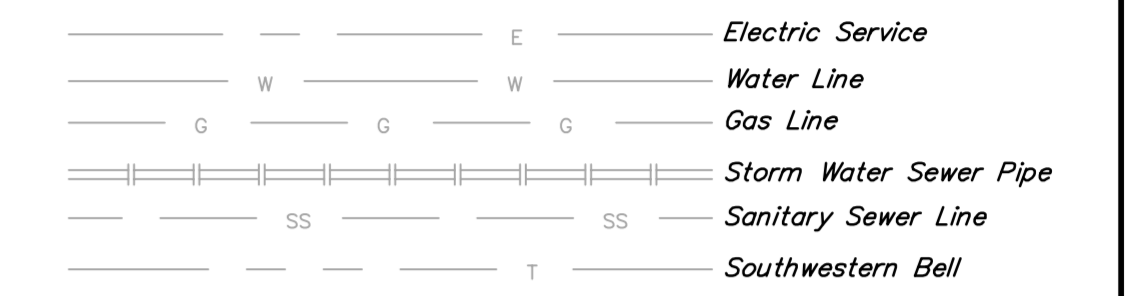
"C" cut West Side of Light Pole Base,
Northeast of drive to site parking lot.
Elev. = 100.19 (City) 1288.05 (NAVD 88)



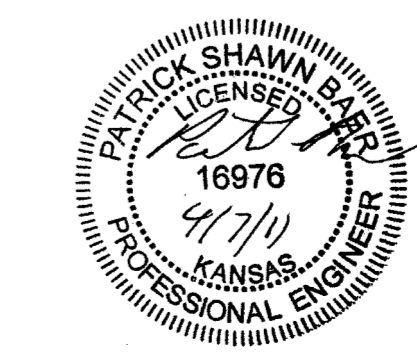
SITE INFORMATION

Total Site: ±2,521,260 sq. ft. (57.88 acres)
Disturbed Area: 75,314.70 sq. ft. (1.73 acres)
Impervious Area: 33,816.24 sq. ft. (0.78 acres)
Pervious Area: 41,498.46 sq. ft. (0.95 acres)
Additional Parking Provided: 96 Spaces, plus 4 Accessible Stalls

LEGEND

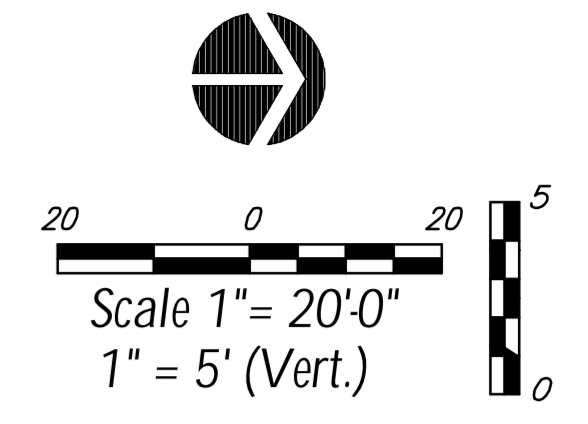


	Greater Wichita YMCA	
	ERU Plan	
Parking Lot		
<small>Baughman Company, P.A. 315 Ellis St. Wichita, KS 67211 P 316-262-7271 F 316-262-0149 ENGINEERING SURVEYING PLANNING LANDSCAPE ARCHITECTURE</small>		
PROJECT NUMBER	DESIGN	DRAWN
	PSB	TNT
REVISIONS	APPROVED	DATE
	PSB	4/7/2011
	SCALE	Noted
	SHEET	
2 OF 6		

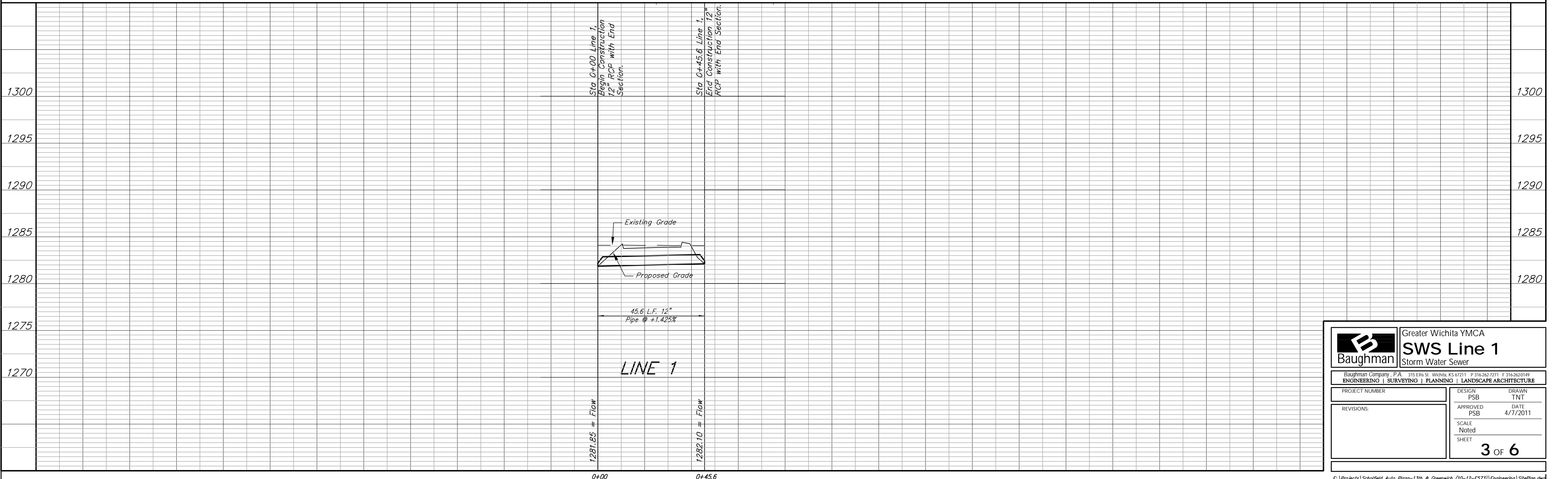
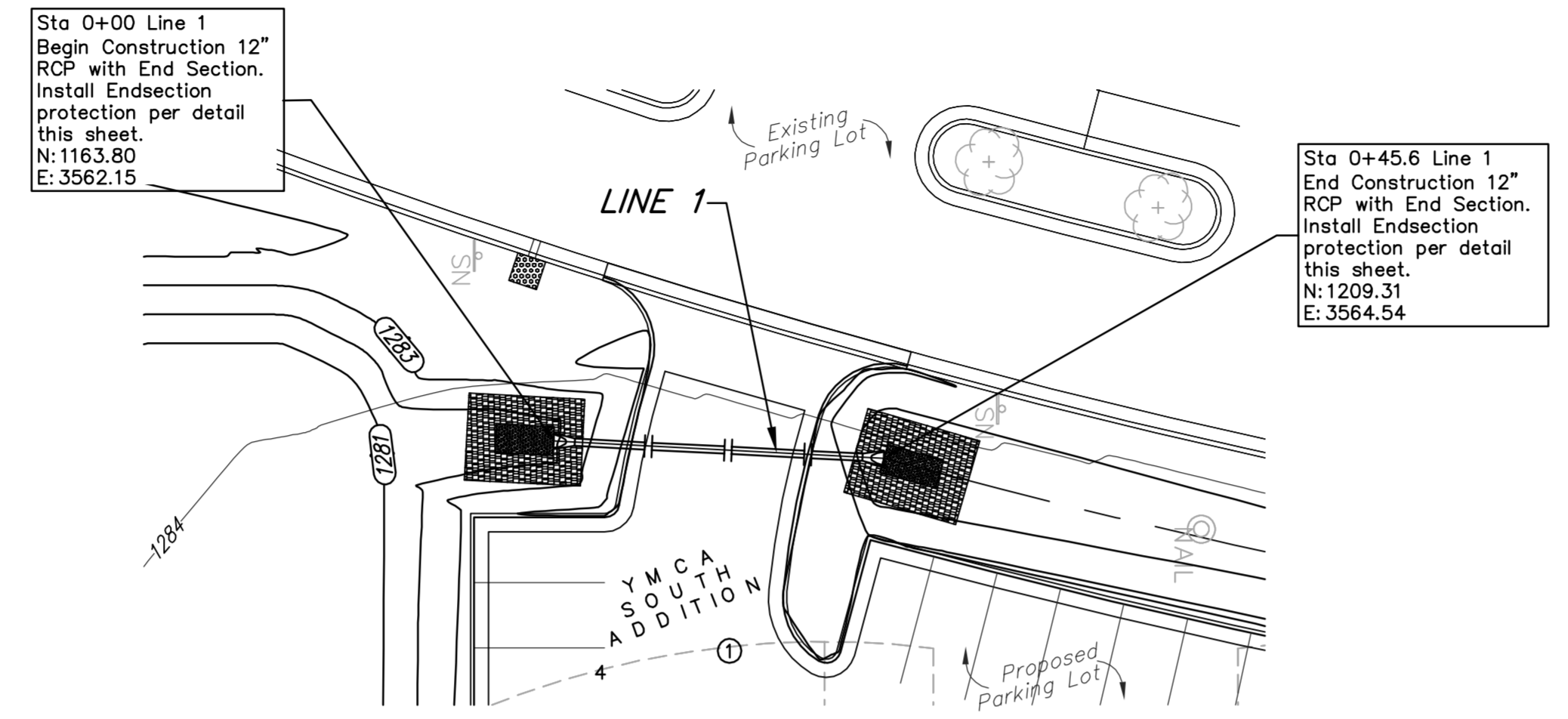
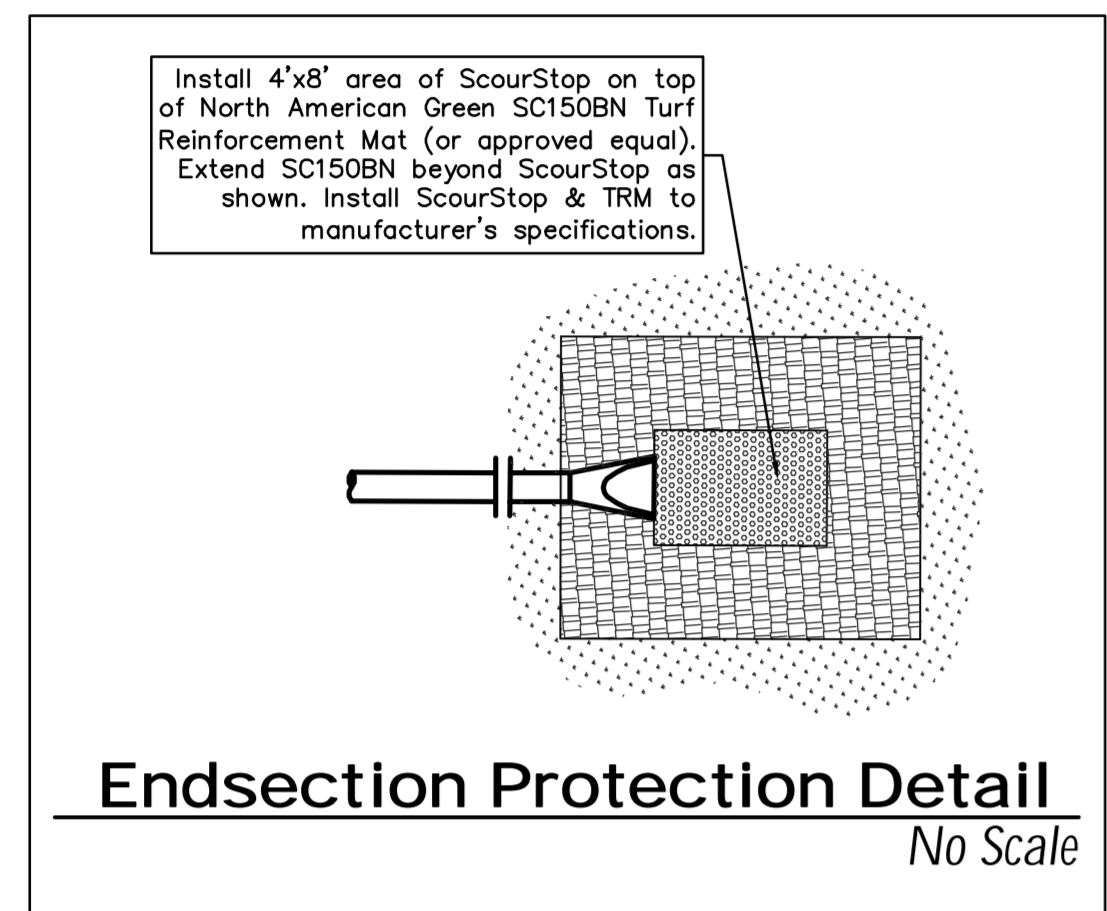
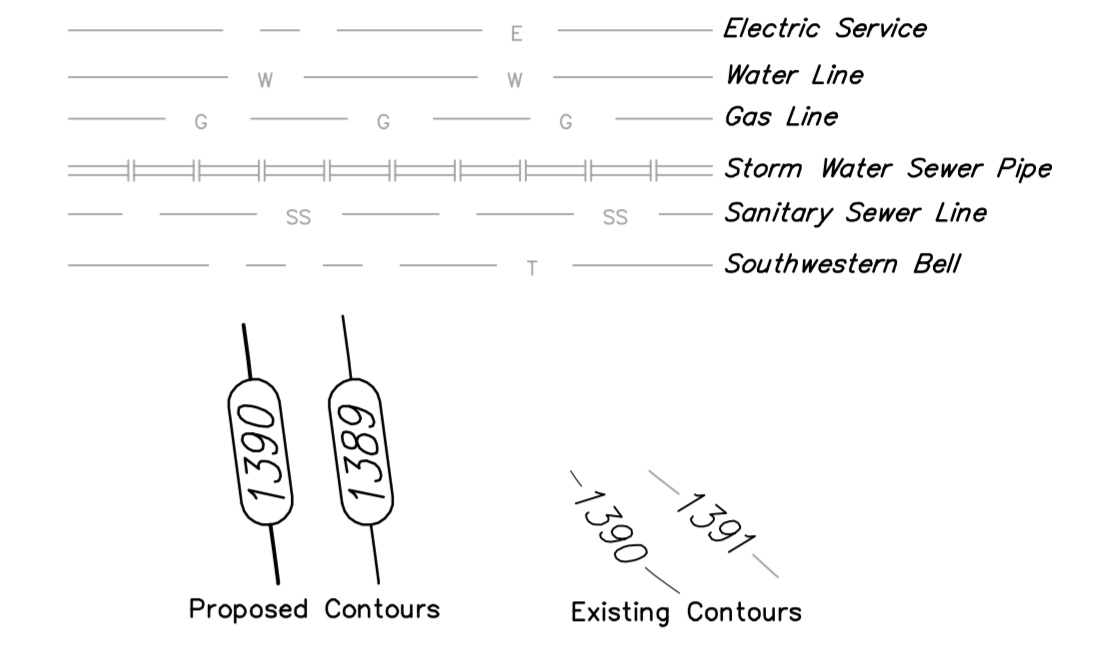


BENCHMARK

"C" cut West Side of Light Pole Base,
Northeast of drive to site parking lot.
Elev. = 100.19 (City) 1288.05 (NAVD 88)



LEGEND



	Greater Wichita YMCA	
	SWS Line 1 Storm Water Sewer	
<small>Baughman Company, P.A. 315 Ellis St. Wichita, KS 67211 P 316.262.7271 F 316.262.0149 ENGINEERING SURVEYING PLANNING LANDSCAPE ARCHITECTURE</small>		
PROJECT NUMBER	DESIGN PSB	DRAWN TNT
REVISIONS:	APPROVED PSB	DATE 4/7/2011
	SCALE Noted	
	SHEET	3 OF 6

BENCHMARK

SITE BENCHMARK-1
 1" cut West Side of Light Pole Base, Northeast of drive to site parking lot.
 Elev. = 100.19 (City) 1288.05 (NAVD 88)

LEGAL DESCRIPTION

A PORTION OF YMCA SOUTH ADDITION LOTS 4 OF BLOCK 1 IN WICHITA, KANSAS OF SEDGWICK COUNTY KANSAS.

SITE INFORMATION

Total Site: ±2,521,260 sq. ft. (57.88 acres)
 Disturbed Area: 75,314.70 sq. ft. (1.73 acres)
 Impervious Area: 33,816.24 sq. ft. (0.78 acres)
 Pervious Area: 41,498.46 sq. ft. (0.95 acres)
 Additional Parking Provided: 96 Spaces, plus 4 Accessible Stalls

EROSION CONTROL NOTES:

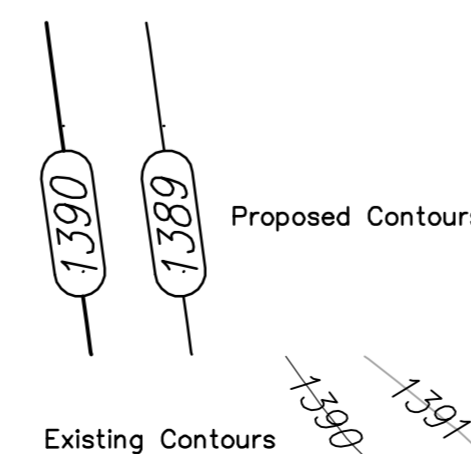
- No land clearing or grading shall begin until all applicable erosion control measures have been installed. This project is subject to this SWPP Plan. The Contractor shall comply with any unusual requirements as necessary for the site to be in compliance during construction, per this plan and City specs (See #11).
- All exposed areas shall be seeded as specified within 30 days of final GRADING.
- Should construction stop for longer than 15 days, the site shall be seeded as specified.
- Maintain erosion control measures after each rain and at least once a week.
- This plan shall not be considered all inclusive as the contractor shall take all necessary precautions to prevent soil sediment from leaving the site.
- Contractor shall comply with all state and local ordinances that apply.
- Additional erosion and sediment control measures will be installed if deemed necessary by on site inspection.
- Land disturbing activities shall not commence until approval to do so has been received by governing authorities.
- If installation of storm drainage system should be interrupted by weather or nightfall, the pipe ends shall be covered with filter fabric.
- See Landscape Plan for ground treatments in all disturbed areas beyond impervious surfaces.
- This SWPP Plan should be in job trailer and/or on site at all times. The Contractor is responsible for any needed changes, updates or maintenance to BMP's on site. This plan may change and updates need to be recorded and documented on the plan. This plan is a flexible plan, due to changing site conditions and weather. Please inform Landscape Architect and/or Engineer of changes to plan.
- ANY substitutions for the sediment control devices shown, must be approved by the Landscape Architect and/or Engineer prior to any uses on site.
- An NPDES Permit Application has been submitted for this property. A copy of this application must be kept at the job site for the duration of the construction process.

EROSION CONTROL LEGEND

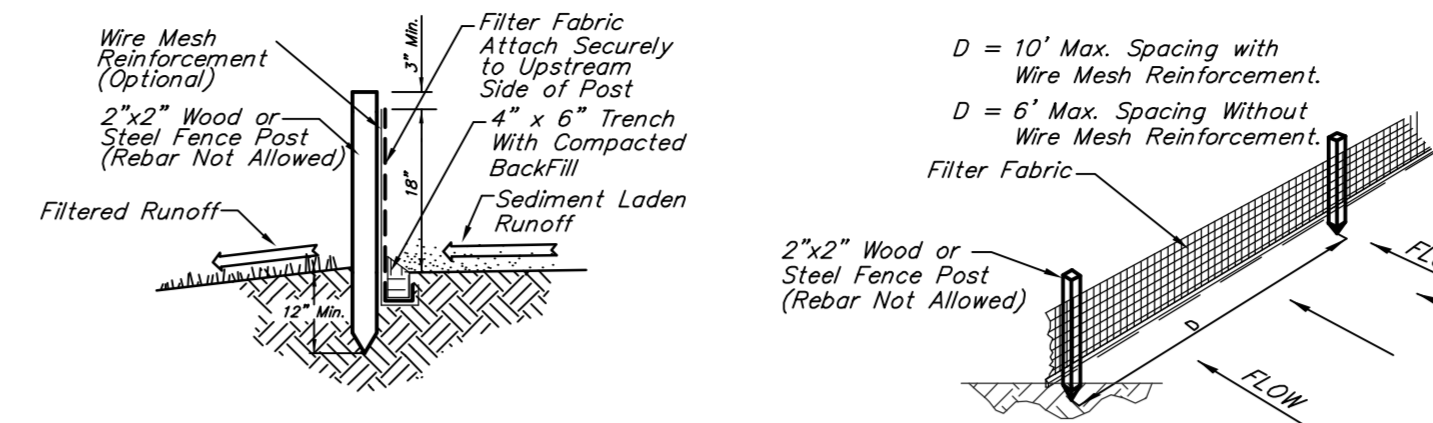


LEGEND

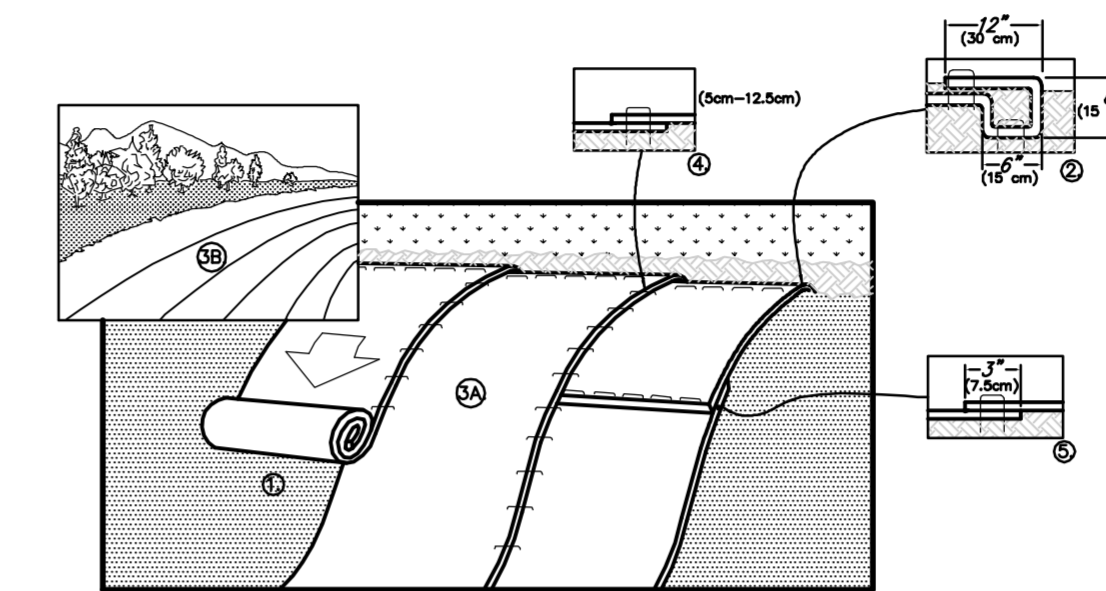
— E —	Electric Service
— W —	Water Line
— G —	Gas Line
— SSS —	Storm Water Sewer Pipe
— SS —	Sanitary Sewer Line
— T —	Southwestern Bell



	5.5\" Asphat Pavement w/ modified subgrade.
	6\" & 8\" Rein. Concrete Pavement w/ modified subgrade



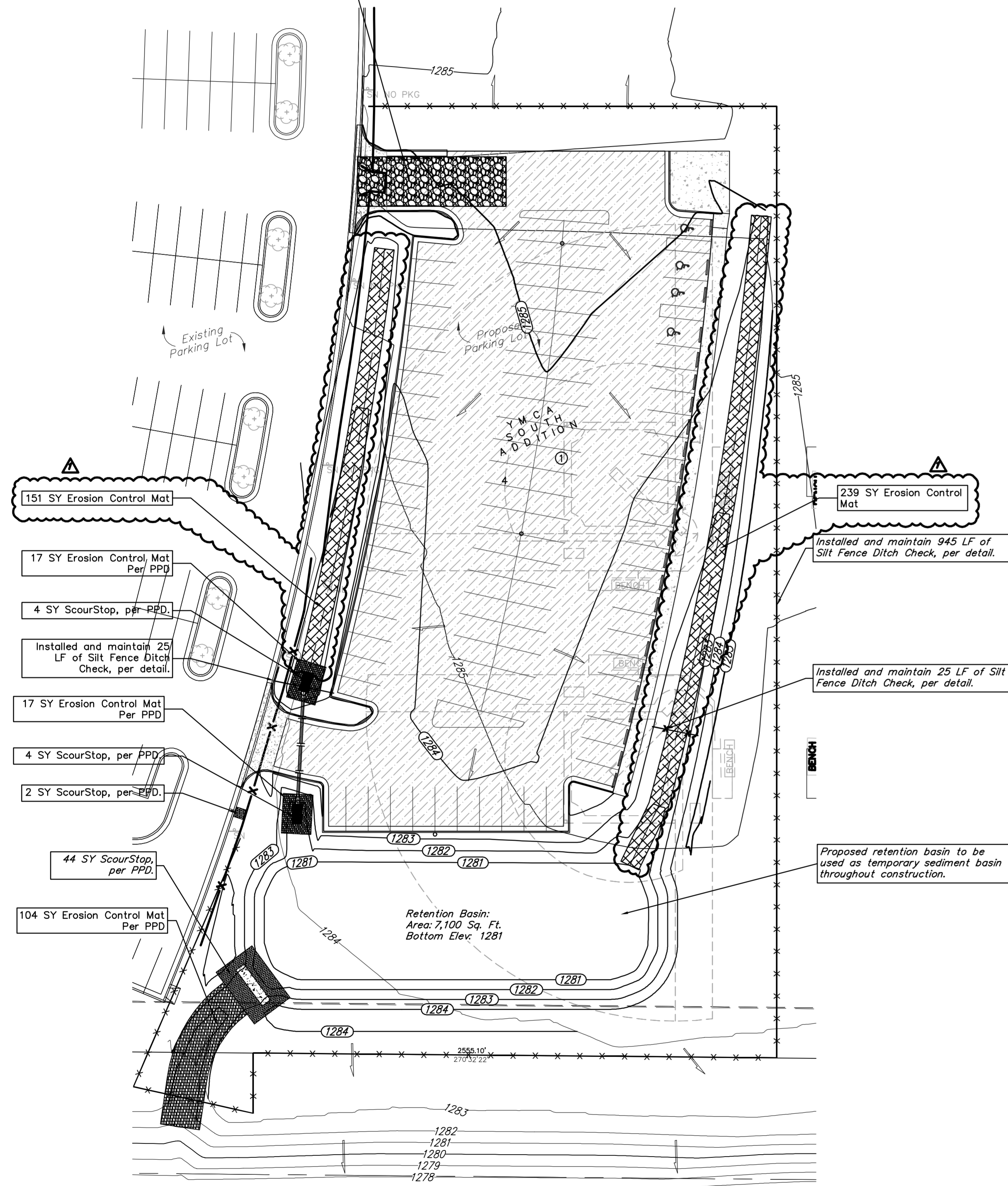
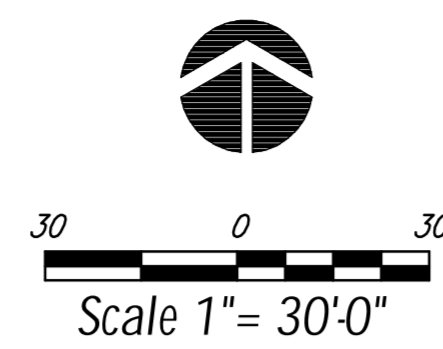
1 SILT FENCE DETAIL
 NOT TO SCALE



- PREPARE SOIL BEFORE INSTALLING BLANKETS, INCLUDING ANY NECESSARY APPLICATION OF LIME, FERTILIZER, AND SEEDS. NOTE: WHEN USING CELL-O-SEED DO NOT SEED PREPARED AREA. CELL-O-SEED MUST BE INSTALLED WITH PAPER SIDE DOWN.
- BEGIN AT THE TOP OF THE SLOPE BY ANCHORING THE BLANKET IN A 6" (15cm) DEEP X 6" (15cm) WIDE TRENCH WITH APPROXIMATELY 12" (30cm) OF BLANKET EXTENDED BEYOND THE UP-SLOPE PORTION OF THE TRENCH. ANCHOR THE BLANKET WITH A ROW OF STAPLES/STAKES APPROXIMATELY 12" (30cm) APART IN THE BOTTOM OF THE TRENCH. BACKFILL AND COMPACT THE TRENCH AFTER STAPLING. APPLY SEED TO COMPACTED SOIL AND FOLD REMAINING 12" (30cm) PORTION OF BLANKET BACK OVER SEED AND COMPACTED SOIL. SECURE BLANKET OVER COMPACTED SOIL WITH A ROW OF STAPLES/STAKES SPACED APPROXIMATELY 12" (30cm) APART ACROSS THE WIDTH OF THE BLANKET.
- ROLL THE BLANKETS (A) DOWN OR (B) HORIZONTALLY ACROSS THE SLOPE. BLANKETS WILL UNROLL WITH APPROPRIATE SIDE AGAINST THE SOIL SURFACE. ALL BLANKETS MUST BE SECURELY FASTENED TO SOIL SURFACE BY PLACING STAPLES/STAKES IN APPROPRIATE LOCATIONS AS SHOWN IN THE STAPLE PATTERN GUIDE. WHEN USING OPTIONAL DOT SYSTEM, STAPLES/STAKES SHOULD BE PLACED THROUGH EACH OF THE COLORED DOTS CORRESPONDING TO THE APPROPRIATE STAPLE PATTERN.
- THE EDGES OF PARALLEL BLANKETS MUST BE STAPLED WITH APPROXIMATELY 2"-5" (5cm-12.5cm) OVERLAP DEPENDING ON BLANKET TYPE. TO ENSURE PROPER SEAM ALIGNMENT, PLACE THE EDGE OF THE OVERLAPPING BLANKET (BLANKET BEING INSTALLED ON TOP) EVEN WITH THE COLORED SEAM STITCH ON THE PREVIOUSLY INSTALLED BLANKET.
- CONSECUTIVE BLANKETS SPLICED DOWN THE SLOPE MUST BE PLACED END OVER END (SHINGLE STAPLES) WITH AN APPROXIMATE 3" (7.5cm) OVERLAP. STAPLE THROUGH OVERLAPPED AREA, APPROXIMATELY 12" (30cm) APART ACROSS ENTIRE BLANKET WIDTH.

2 EROSION CONTROL MAT - SLOPE INSTALLATION
 NOT TO SCALE
 14649 HIGHWAY 41 NORTH, EVANSVILLE, INDIANA 47725
 USA 1-800-772-2040 CANADA 1-800-448-2040
 www.nogreen.com

Contractor shall install and maintain approved construction entrance as discussed in the storm water pollution prevention plan guidelines. Entrance shall be a minimum of 30' wide by 85' in length with 4-6" dia. stone at a depth of 8".

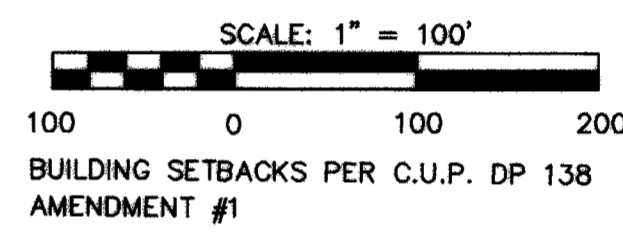
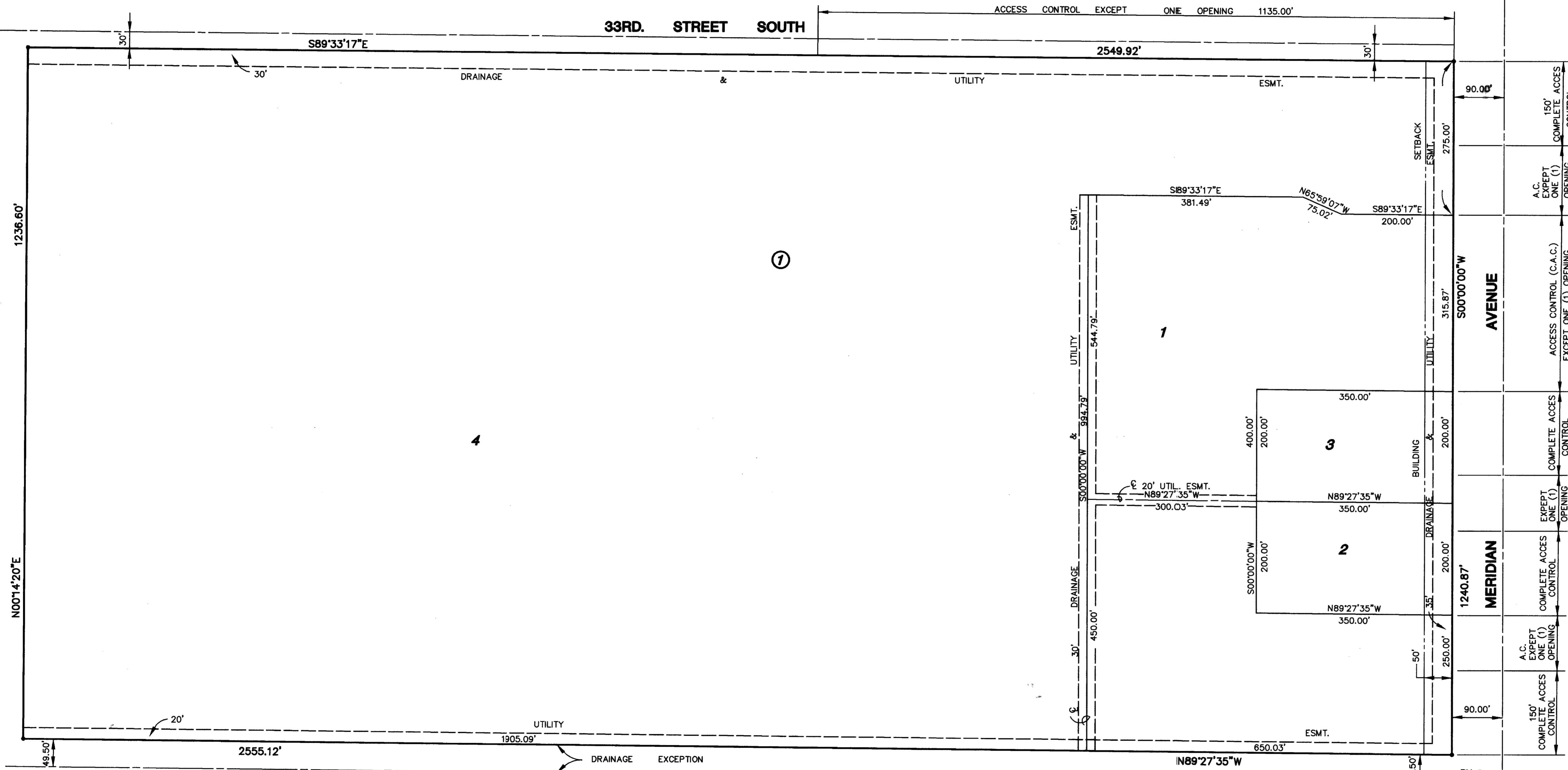


EROSION CONTROL PLAN
 Scale 1" = 30'-0"

Greater Wichita YMCA Erosion Control Plan Pavement	
Baughman Company, P.A. 315 Ellis St. Wichita, KS 67211 P 316-262-7271 F 316-262-0149 ENGINEERING SURVEYING PLANNING LANDSCAPE ARCHITECTURE	
PROJECT NUMBER	DESIGN DRAWN
REVISIONS:	APPROVED DATE
4/12/2011	PSB 4/7/2011
TNT	SCALE
Added 190 SY of Erosion Control Mat	Noted
	SHEET
	5 OF 6

FINAL PLAT OF YMCA SOUTH ADDITION AN ADDITION TO WICHITA, SEDGWICK COUNTY, KANSAS

YMCA SOUTH ADDITION



LEGEND
• IRON

MINIMUM PAD ELEVATION			
LOT	BLOCK	CITY DATUM	USGS DATUM
1	1	100.0	1287.4
2	1	100.0	1287.4
3	1	100.0	1287.4
4	1	100.6	1288.0

S.E. COR., N.E. 1/4
SEC. 12, T28S, R1W

B.M. CITY STANDARD N.W. CORNER R.C.B. ON
MERIDIAN N. OF I-235.
ELEV. = 1287.55

Copy of Plat,
For Reference Only
Not to Scale.