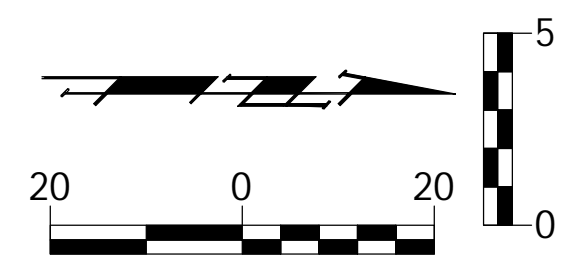
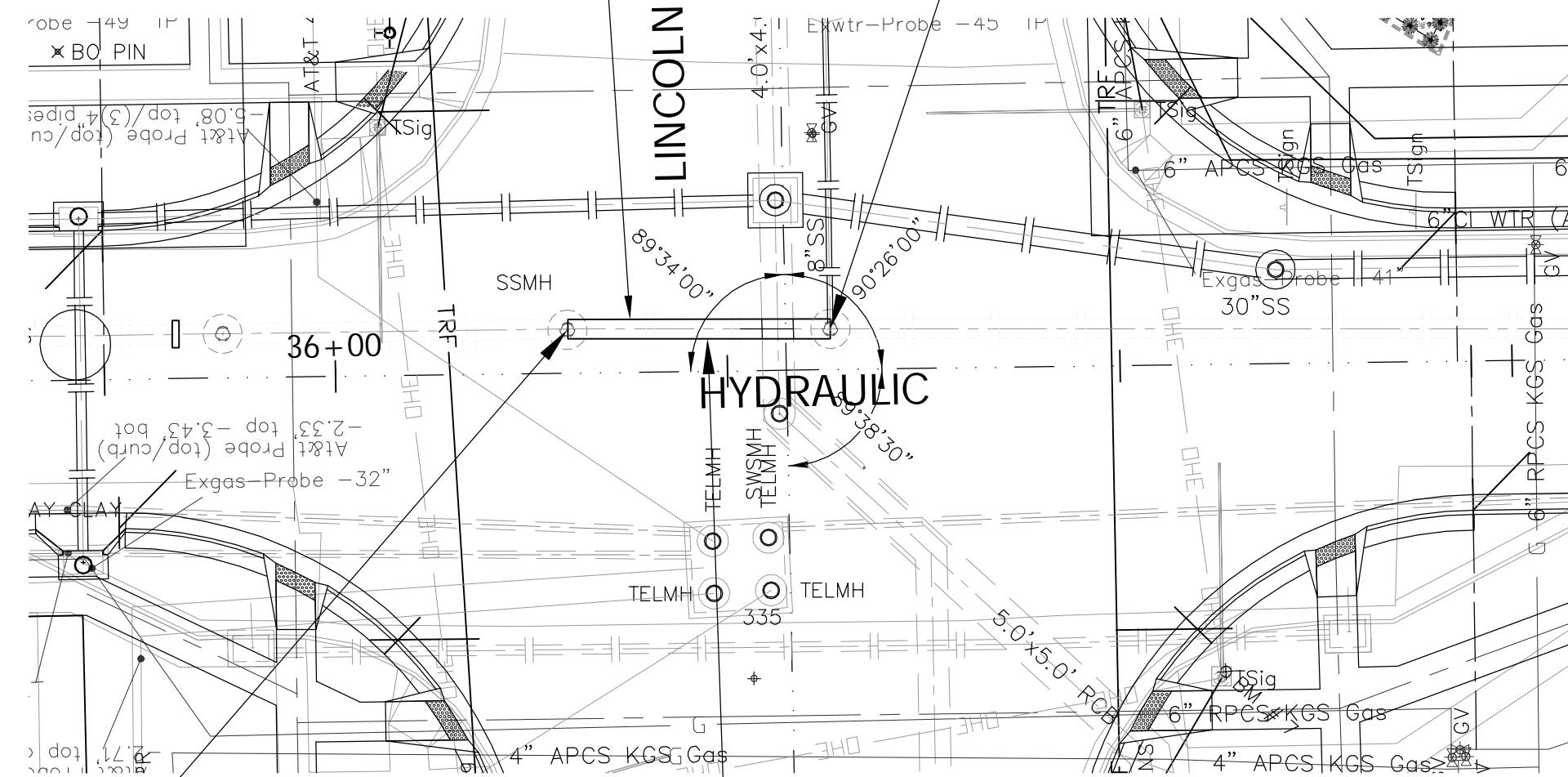


| FHWA REGION NO. | STATE | PROJECT NO. | FISCAL YEAR | SHEET NO. | TOTAL SHEETS |
|-----------------|--------|-------------|-------------|-----------|--------------|
| 7 | KANSAS | 87N-0503-01 | 2009 | 2 | 3 |

FEDERAL Project No. ARRA-N050(301)



SCALE:
1" = 20' Horizontal
1" = 5' Vertical



Sta. 0+00, Begin Line 1=
Hydraulic Sta. 36+29.65, 5.5' Lt.
Remove Existing Pipe from N. Side
of Manhole and Connect New 30"
PVC Pipe. Grout and Seal Watertight.

Remove Exist. 30" C.I. SS Pipe
& Replace w/ 30" PVC Pipe.
Construct Concrete Cradle

Sta. 0+33.51, End Line 1=
Hydraulic Sta. 36+63.16, 5.2' Lt.
Remove Existing Pipe from S. Side
of Manhole and Connect New 30"
PVC Pipe. Grout and Seal Watertight.

* NOTE: Existing eight (8) inch sanitary sewer flowline (in) and thirty (30) inch flowline shown are calculated from all available structures along with record information, and are not explicitly warranted or guaranteed. Any discrepancies found that alter the nature of the replacement project shall be immediately brought to the attention of the Engineer.

All NEW Manholes that are to be constructed with this Sewer Replacement Project along with Existing Brick Manholes that are to remain (Line 1) shall be LINED with a City approved lining system.

Contractor Shall Note that for Line 1 & Line 3, Replacement Pipe Shall be DR21, 200 PSI Rated PVC Waterline Pipe or Centrifugally Cast Fiberglass Reinforced Polymer Mortar (CCFRPM) Pipe Meeting the Requirements of AWWA C-950 Standards for Fiberglass Pressure Pipe.

In Addition, A Concrete Cradle may be Required in Locations where Trench Excavation Does Not Allow Uniform Soil/Bedding Interaction for Proper Pipe Stability.

Special Pipe Required for Lines 1&3, lining systems, and any & all Necessary Concrete Cradle Shall be be Considered INCIDENTAL to the 30" PVC Sanitary Sewer Pipe Bid Item.

Line 1

12-08-09
REVISED LINE 1

