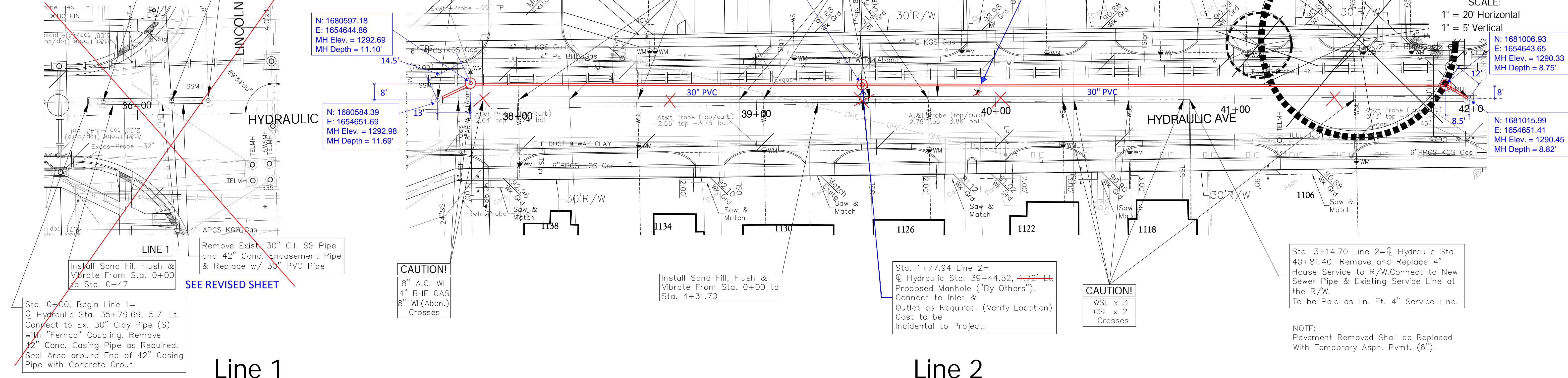
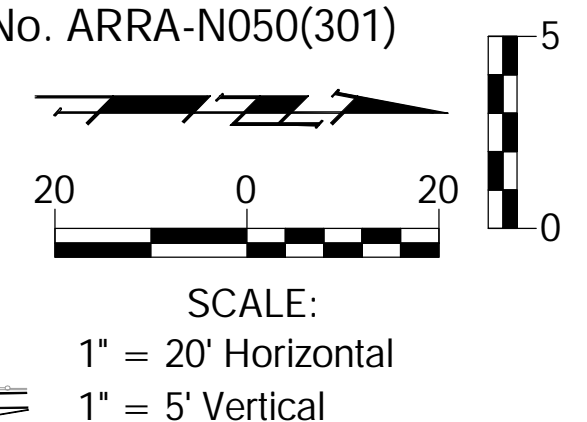
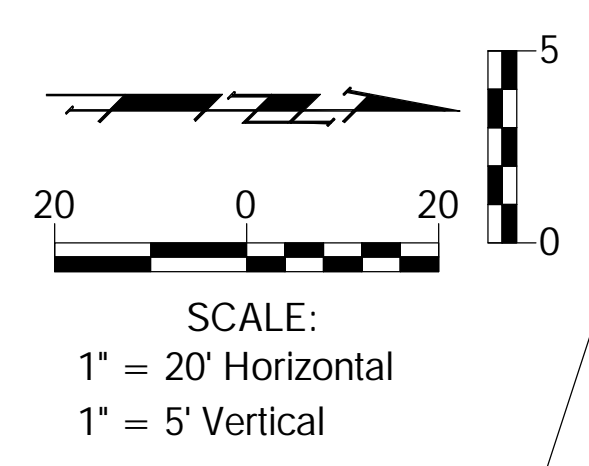


FHWA REGION NO.	STATE	PROJECT NO.	FISCAL YEAR	SHEET NO.	TOTAL SHEETS
7	KANSAS	87N-0503-01	2009	2	3

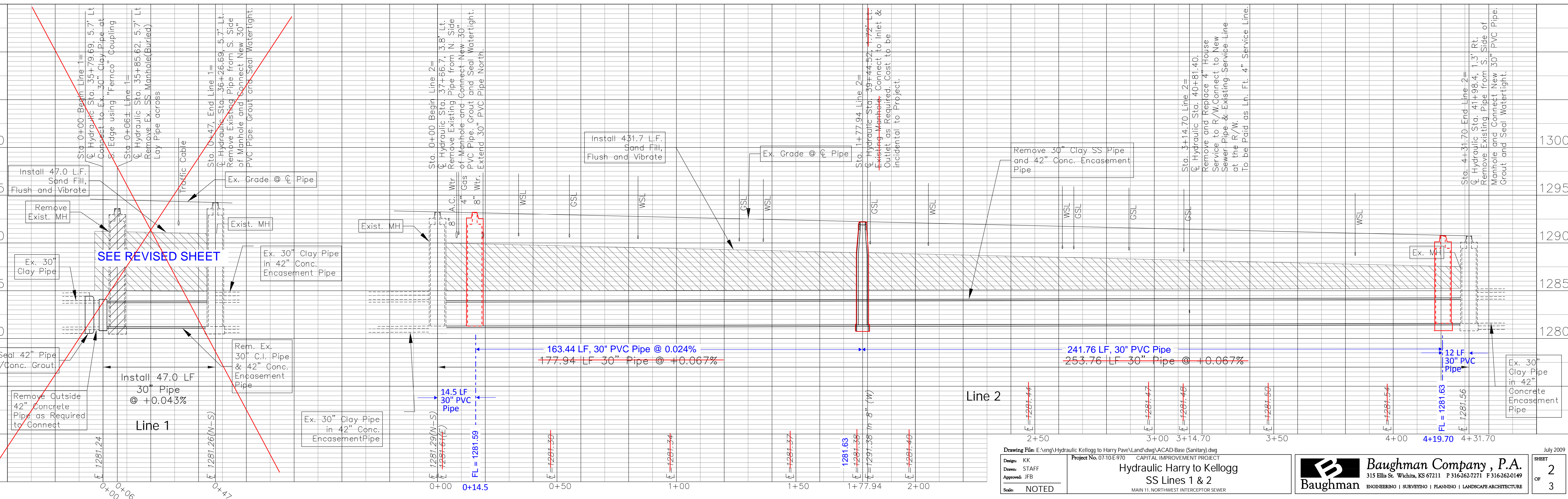
FEDERAL Project No. ARRA-N050(301)



Line 1

Line 2

NOTE:
Pavement Removed Shall be Replaced With Temporary Asph. Pvmnt. (6").



Line 1

Line 2

Design: KK
Drawn: STAFF
Approved: JFB
Scale: NOTED

Project No. 0710 E 970 CAPITAL IMPROVEMENT PROJECT

Hydraulic Harry to Kellogg
SS Lines 1 & 2
MAIN 11, NORTHWEST INTERCEPTOR SEWER

July 2009

Baughman Company, P.A.
315 Ellis St. Wichita, KS 67211 P 316-262-7271 F 316-262-0149

ENGINEERING | SURVEYING | PLANNING | LANDSCAPE ARCHITECTURE

SHEET 2 OF 3