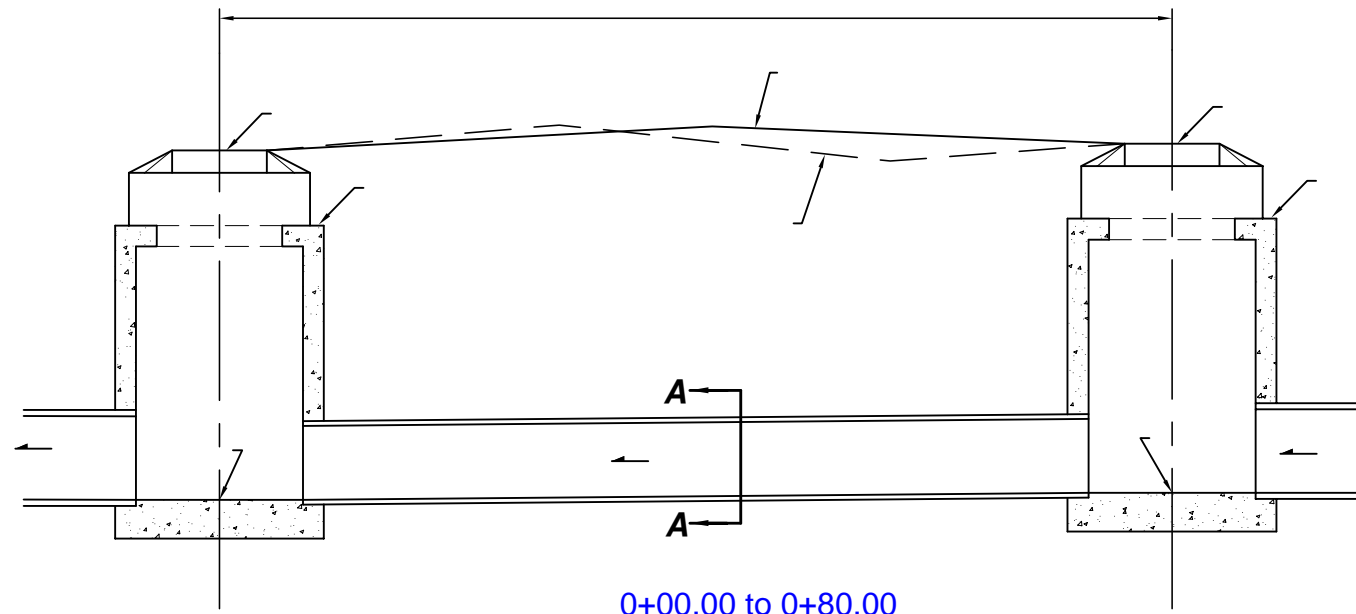
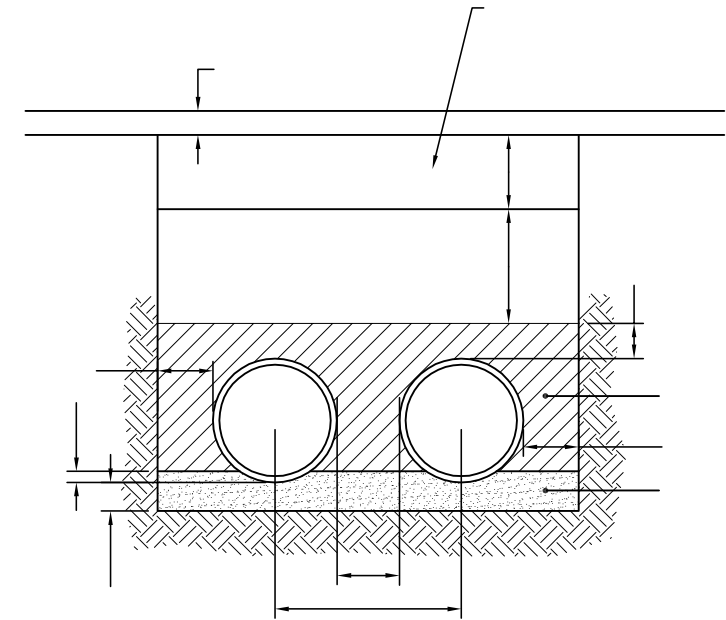


| | | | | |
|--|---|------------------------------------|---------------------------|------------------------------|
| | Ruggles & Bohm, P.A. Engineering, Surveying, Land and Planning 924 North Main (316) 264-8008 Wichita, Kansas 67203 (316) 264-4621 fax www.rbkansas.com E-mail: info@rbkansas.com | PROJECT NUMBER 468-83460 | DRAWN EB | DATE Apr. 29, 2004 |
| | PROJECT TITLE SANITARY SEWER RECONSTRUCTION PLANNING PROFILE WICHITA, KANSAS | DESIGN TCR | UTILITY UTILITY | REVIEW REVIEW |



0+00.00 to 0+80.00
 PROFILE ~~0+14.41 TO 0+62.95~~



SECTION A-A

PROFILE DETAILS
 HARRY AND GROVE
 WICHITA, KANSAS



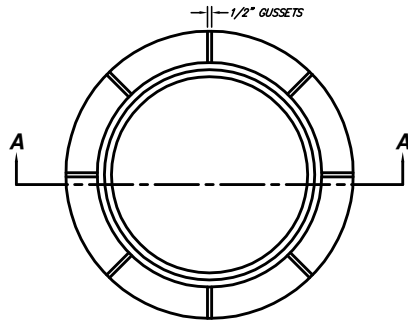
Ruggles & Bohm, P.A.
 Engineering, Surveying, Land Planning

924 North Main (318) 284-8008
 Wichita, Kansas 67203 (318) 284-4821 fax
 www.rbkansas.com E-mail: info@rbkansas.com

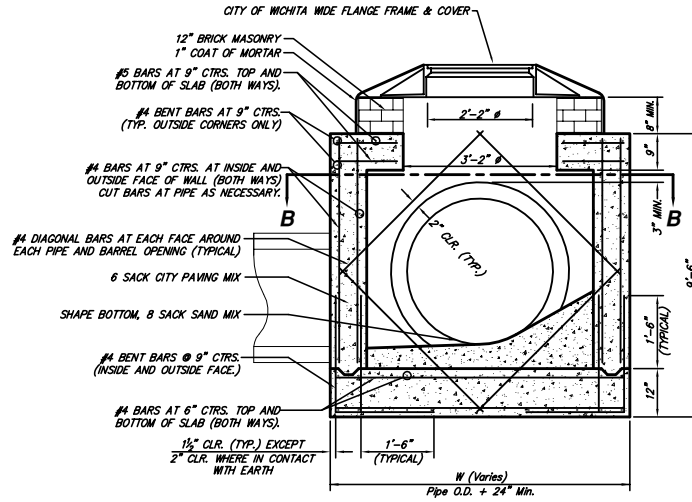
DRAWING FILE
 siphon details

PROJECT NUMBER
 468-83460

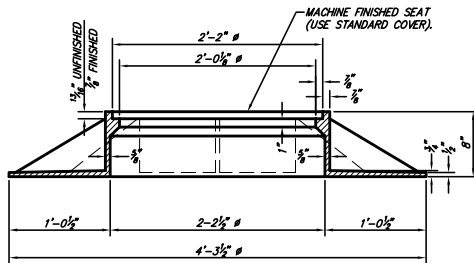
| | |
|-----------------------|-----------------------|
| DESIGN TCR | SHEET 3 OF 6 |
| DRAWN E.J.B. | |
| REVIEW | |
| UTILITY | |
| DATE Apr. 29, 2004 | |



PLAN
*STANDARD MANHOLE FRAME SHOWN

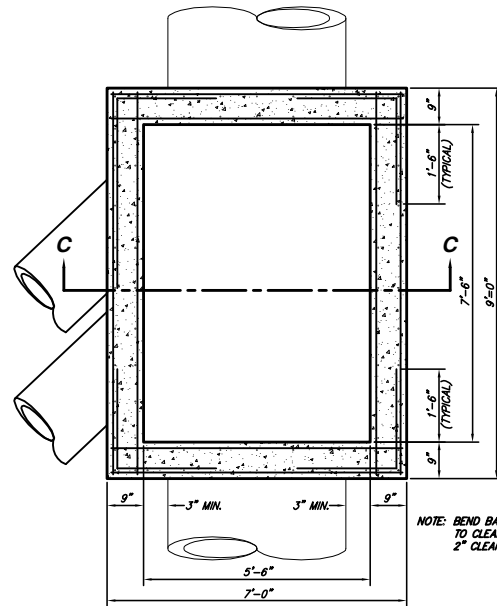


SECTION C-C



SECTION A-A
WIDE FLANGE MANHOLE FRAME
HEIGHT = 705 LBS.

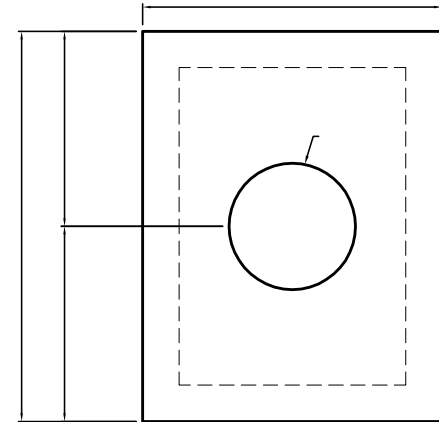
CITY OF WICHITA STANDARD MANHOLE FRAME DETAILS



SECTION B-B

GENERAL NOTES:

- MORTAR USED IN MASONRY CONSTRUCTION SHALL CONTAIN 8 SACKS OF CEMENT PER CUBIC YARD. CONCRETE USED IN MANHOLE WALLS AND BASES SHALL CONFORM TO THE REQUIREMENTS FOR CONCRETE PAVEMENT CONSTRUCTION AS SPECIFIED IN THE CITY STANDARD PAVING SPECIFICATIONS, USING CITY CONCRETE PAVEMENT MIX WITHOUT AIR ENTRAINING ADMIXTURE. MORTAR SHALL BE PLACED AROUND THE MANHOLE RING AS SHOWN ON THE DRAWINGS WHEN MANHOLES ARE CONSTRUCTED IN UNPAVED AREAS. COMPLETED MANHOLE SHALL BE WITHOUT LEAKS AND WATER TIGHT.
- THE FLOORS OF ALL MANHOLES SHALL BE SHAPED WITH FLOW CHANNELS SUCH THAT THE MANHOLES WILL BE SELF-CLEANING, USING 8 SACK SAND MIX CONCRETE. FLOW CHANNELS SHALL BE FORMED TO MATCH THE BOTTOM HALVES OF THE INFLOWING PIPES AND THE OUTFLOWING PIPE. MANHOLE FLOORS SHALL HAVE SLOPES OF 3 INCHES PER FOOT IN THE AREAS OUTSIDE OF THE FLOW CHANNELS, SLOPED TOWARD THE FLOW CHANNELS.
- MANHOLE COVER CASTINGS AND MANHOLE FRAME CASTINGS SHALL CONFORM TO THE REQUIREMENTS AS INDICATED IN THE STANDARD SPECIFICATIONS AND AS SHOWN IN THE STANDARD DETAIL DRAWING.
- THE ENDS OF ALL PIPES IN MANHOLES SHALL BE CUT OFF FLUSH WITH THE INSIDE FACE OF MANHOLE WALL.
- INTERIOR CONCRETE SURFACES OF MANHOLE SHALL BE COATED WITH 90 ML MIN. EPOXY COATING (APPLIED IN 2 COATS). EPOXY MATERIAL TO BE RAVEN 405, AS MANUFACTURED BY RAVEN LINING SYSTEMS (OR APPROVED EQUAL).
- PRE-CAST CONCRETE MANHOLES MAY BE USED WITH APPROVAL OF THE ENGINEER.



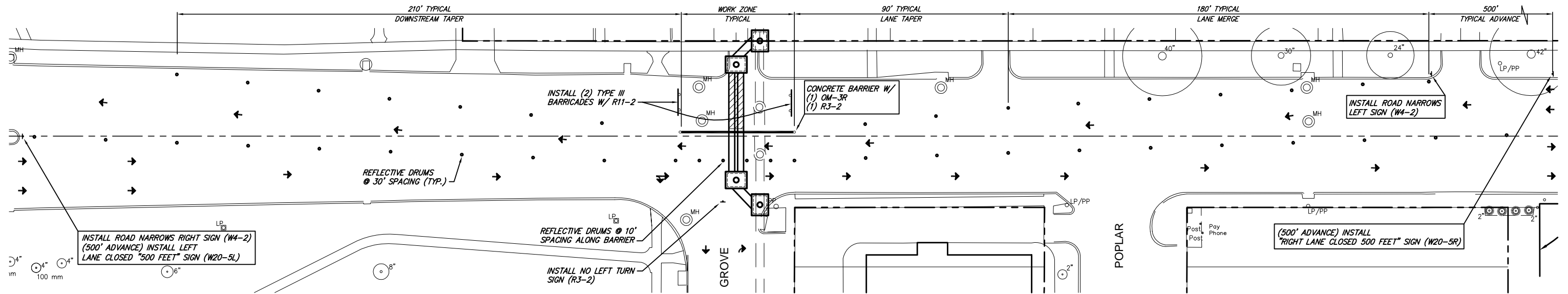
TOP PLAN

REVISION

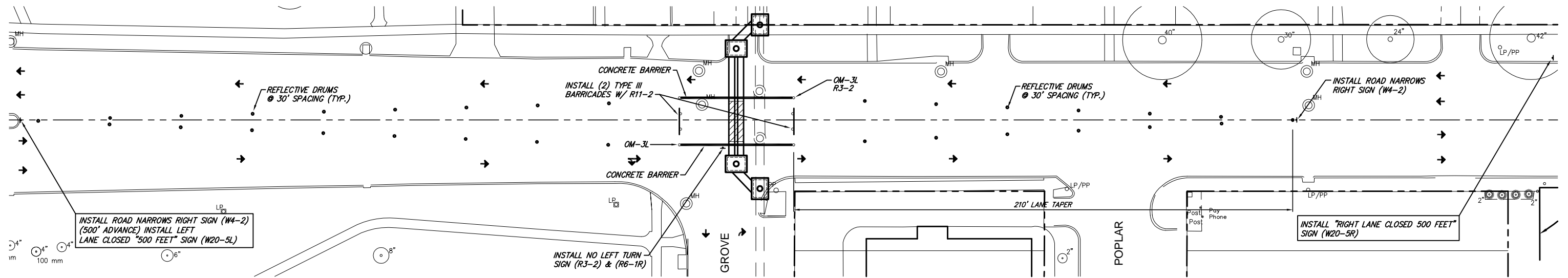
**SANITARY SEWER RECONSTRUCTION
REINFORCED CONCRETE MANHOLE DETAIL
WICHITA, KANSAS**

| | | | |
|---|--|-------------------------------|----------------------|
| | Ruggles & Bohm, P.A. Engineering, Surveying, Land Planning | | DESIGN TOR |
| | 824 North Main Wichita, Kansas 67203 www.rbkansas.com | | DRAWN EJB |
| (316) 264-8008 (316) 264-0231 fax E-mail: info@rbkansas.com | | REVIEW | SHEET 4 |
| PROJECT NUMBER: 488-03460 | | DATE: Apr. 29, 2004 | OF 6 |

DRAWN BY: (RB) Reinforced Conc. MH
 PROJECT NUMBER: 488-03460



PHASE I

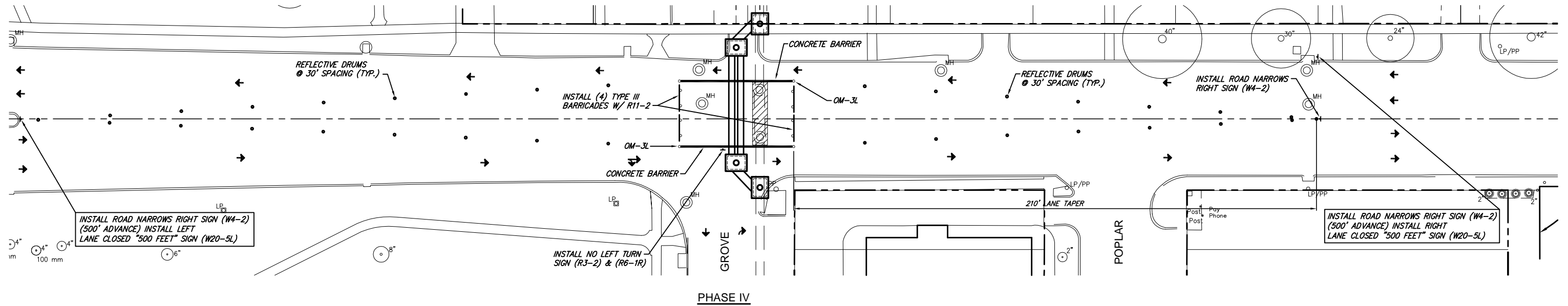
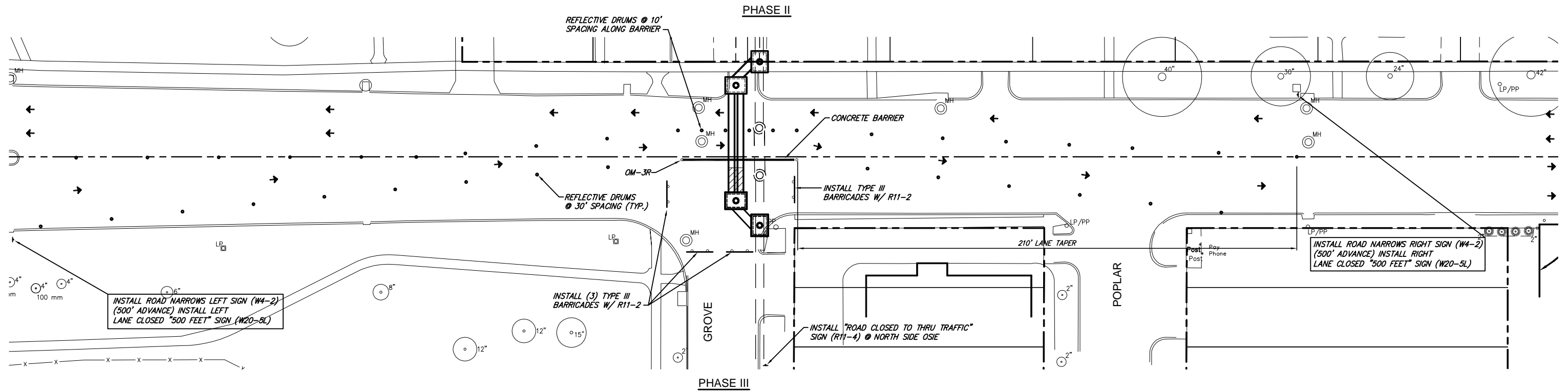


PHASE II

NOTE: ALL TRAFFIC CONTROL DEVICES AND OPERATIONS
SHALL COMPLY WITH M.U.T.C.D. 2000 EDITION



| | | | |
|--|-----------------------------|-----------------------|-------------------------------------|
| TRAFFIC CONTROL PLAN HARRY AND GROVE WICHITA, KANSAS | | DESIGN TCR | SHEET 5 OF 6 |
|  Ruggles & Bohm, P.A. Engineering, Surveying, Land Planning | | DRAWN EUB | |
| 924 North Main Wichita, Kansas 67203 www.rbkansas.com | | REVIEW | |
| (316) 264-8008 (316) 264-4621 fax E-mail: info@rbkansas.com | | UTILITY | |
| DRAWING FILE Traffic {Traffic} | PROJECT NUMBER 468-83460 | DATE Apr. 29, 2004 | |



| | | | |
|--|--|---|-------------------------------------|
| TRAFFIC CONTROL PLAN HARRY AND GROVE WICHITA, KANSAS | | DESIGN TCR | SHEET 6 OF 6 |
|  Ruggles & Bohm, P.A. Engineering, Surveying, Land Planning | | DRAWN EJB | |
| 924 North Main Wichita, Kansas 67203 www.rbkansas.com | | REVIEW UTILITY DATE Apr. 29, 2004 | |
| (316) 264-8008 (316) 264-4621 fax E-mail: info@rbkansas.com | | PROJECT NUMBER 468-83460 | |
| DRAWING FILE Traffic {Traffic} | | | |