

| | | |
|------|---------|------|
| PLAN | CHECKED | DATE |
| | CHECKED | |
| | | |
| | | |

| | | |
|---------|---------|------|
| PROFILE | CHECKED | DATE |
| | CHECKED | |
| | | |
| | | |

Saved: 05-30-2012 10:34:40 AM by: RFI
 Plot Scale: 1/40 06-01-2012 11:31:26 AM by: ROB F. JOHNSON
 G:\2011\1339\002\1339-002-SSPP01

N: 386,626.6877, E: 2,372,491.0331
 Sta. 0+00.0 *
 Construct MH 1 over existing 8" pipe.
 Remove top half of 8" pipe thru MH.
 Standard MH Shape invert to provide
 smooth flow.

CAUTION !!!
 8" Waterline
 (City of Wichita)

Remove and reset
 fence as required.

CAUTION !!!
 48" RCP
 Storm Water Sewer

CAUTION !!!
 Buried Electric
 (Westar Energy)

Remove and reset
 fence as required.

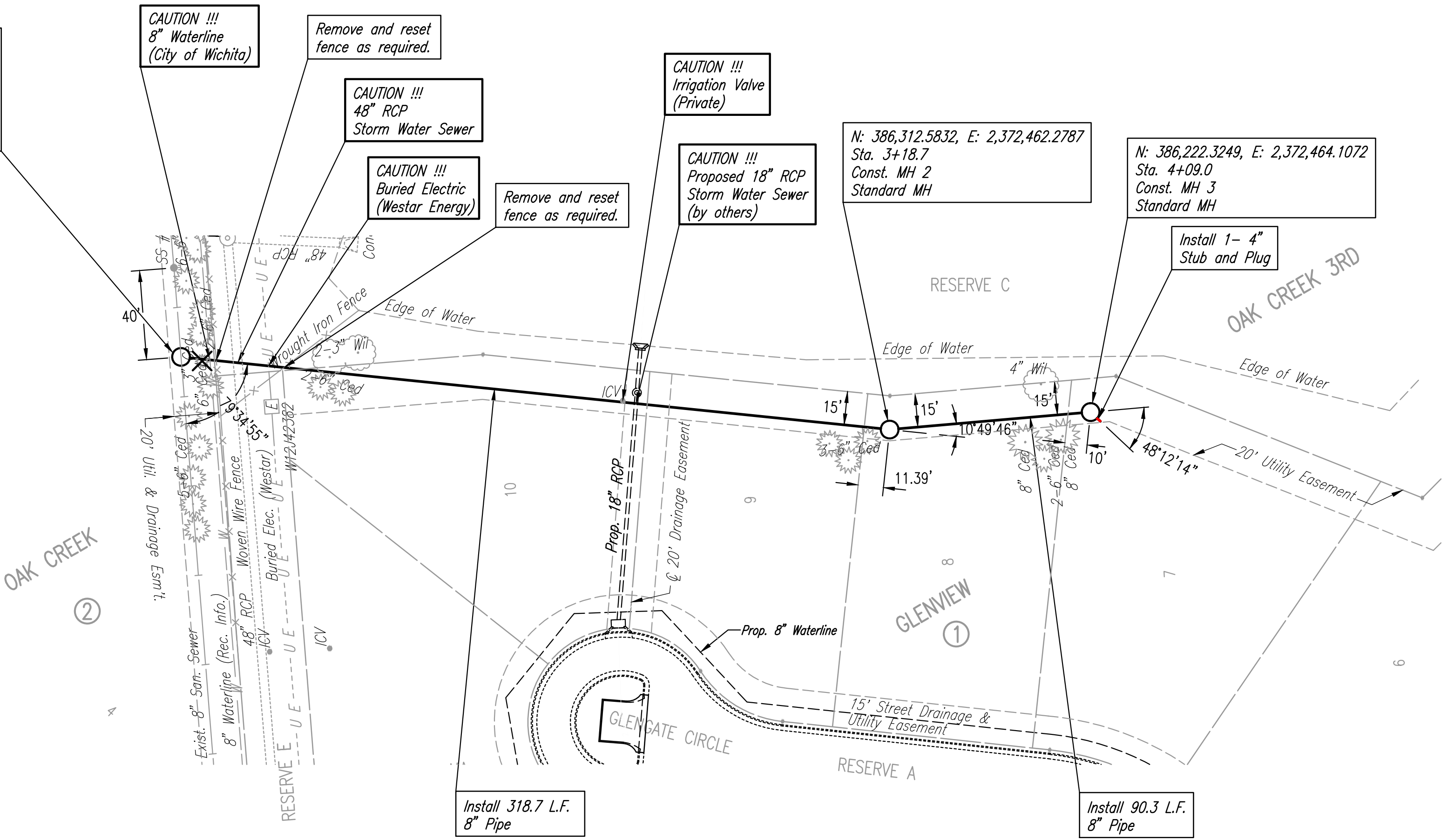
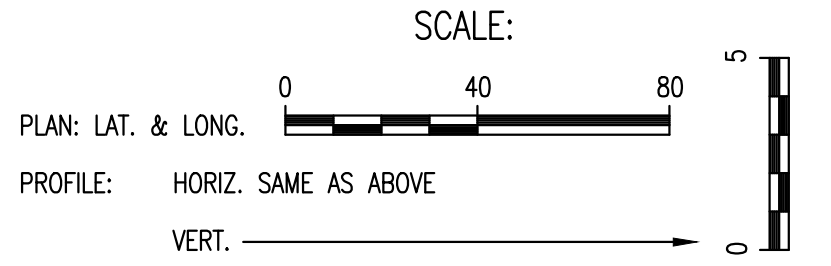
CAUTION !!!
 Irrigation Valve
 (Private)

CAUTION !!!
 Proposed 18" RCP
 Storm Water Sewer
 (by others)

N: 386,312.5832, E: 2,372,462.2787
 Sta. 3+18.7
 Const. MH 2
 Standard MH

N: 386,222.3249, E: 2,372,464.1072
 Sta. 4+09.0
 Const. MH 3
 Standard MH

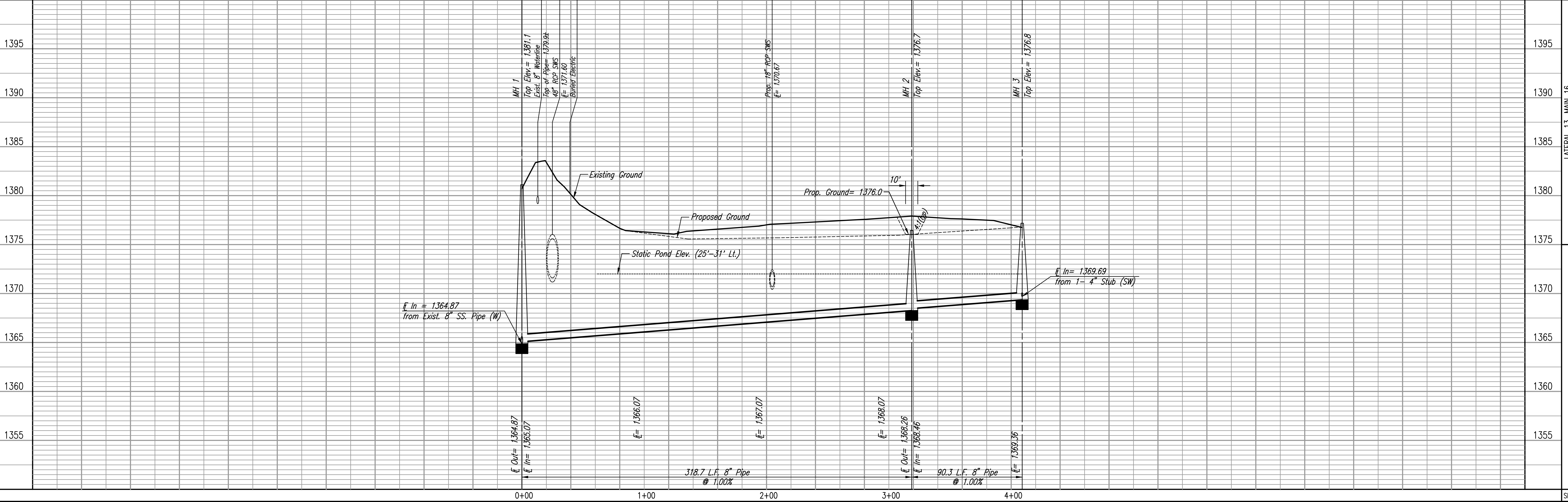
Install 1- 4"
 Stub and Plug



* PRIOR TO BEGINNING CONSTRUCTION, THE CONTRACTOR SHALL EXCAVATE THE EXISTING 8" PIPE AT SANITARY SEWER STATION 0+00.0 TO VERIFY ITS HORIZONTAL AND VERTICAL LOCATION. THE PIPE LOCATION SHALL BE REPORTED TO THE ENGINEER SO THAT ANY NECESSARY PLAN MODIFICATIONS CAN BE MADE. ANY ADDITIONAL LABOR OR MATERIALS NECESSARY TO COMPLETE THE CONNECTION SHALL BE CONSIDERED SUBSIDIARY TO THE PROJECT.

SANITARY SEWER LINE NO. 1

X - Denotes Tree to be removed.



LATERAL 13, MAIN 16
 OF THE FOUR MILE CREEK INTERCEPTOR
SANITARY SEWER LINE NO. 1
 GARY JANZEN, P.E. - INTERIM CITY ENGINEER
 CITY OF WICHITA PROJECT NO. 468-84818

Designed By: MDK
 Drawn By: JAN, CSL
 Job No.: 35-11339-001
 Date: August 2011
 Sheet 4 of 14