

BENCHMARK:  
 BM #2 - Chiseled "□" on the West Side of the Wheel Chair Ramp at the southeast corner of Meridian & Orient  
 Elev. = 1293.19 (NAVD 88)

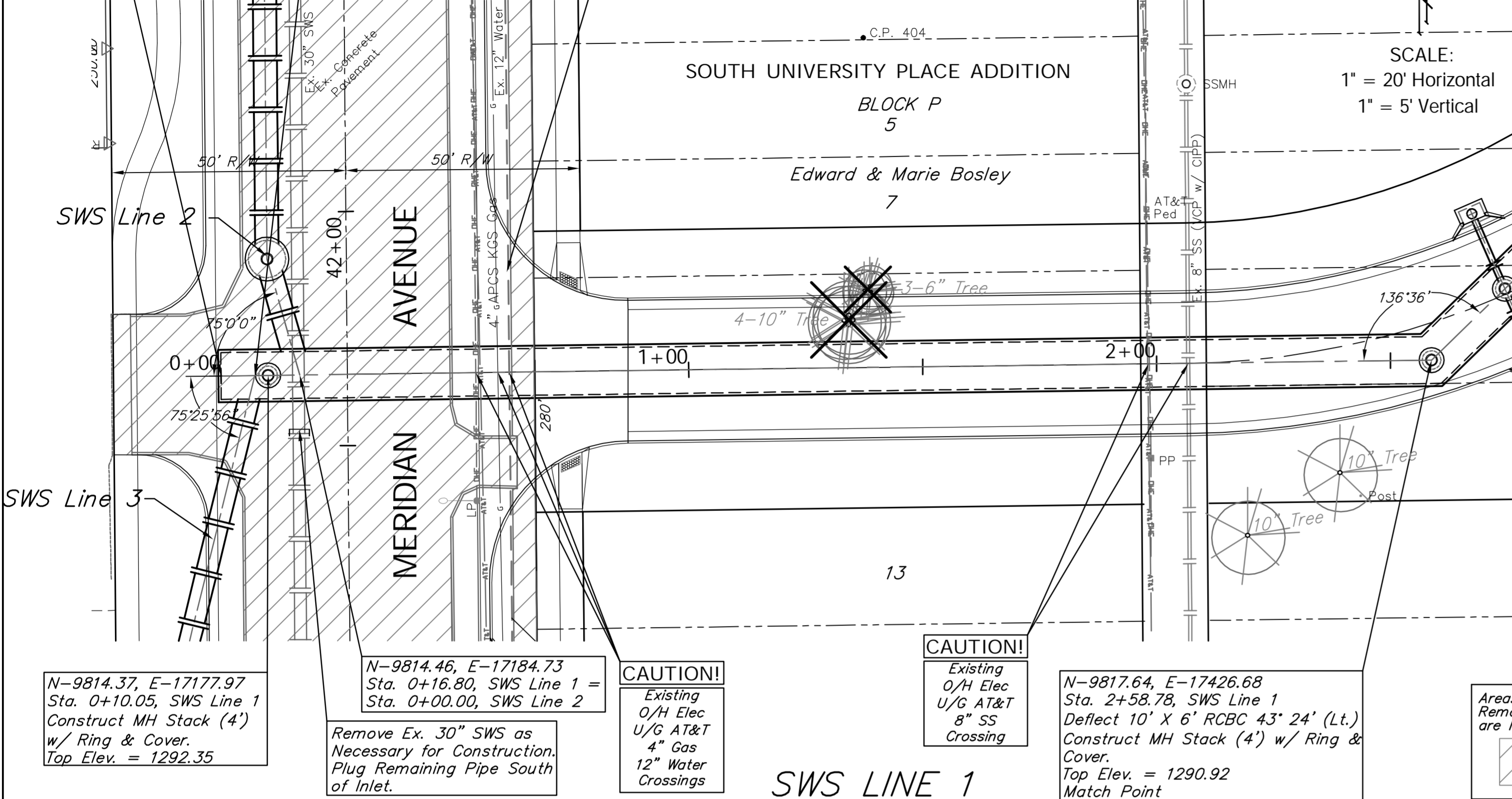
N-9814.24, E-17167.92  
 Sta. 0+00.00, SWS Line 1  
 Begin Installation of 10' X 6' RCBC.

N-9814.33, E-17175.13  
 Sta. 0+07.21, SWS Line 1 =  
 Sta. 0+00.00, SWS Line 3

CAUTION!  
 Existing 30" RCP Crossing

Note:  
 Trees/Shrubs to be removed are marked thus:

SCALE:  
 1" = 20' Horizontal  
 1" = 5' Vertical



BENCHMARK:  
 BM #2 - Chiseled "□" on the West Side of the Wheel Chair Ramp at the southeast corner of Meridian & Orient  
 Elev. = 1293.19 (NAVD 88)

SCALE:  
 1" = 20' Horizontal  
 1" = 5' Vertical

