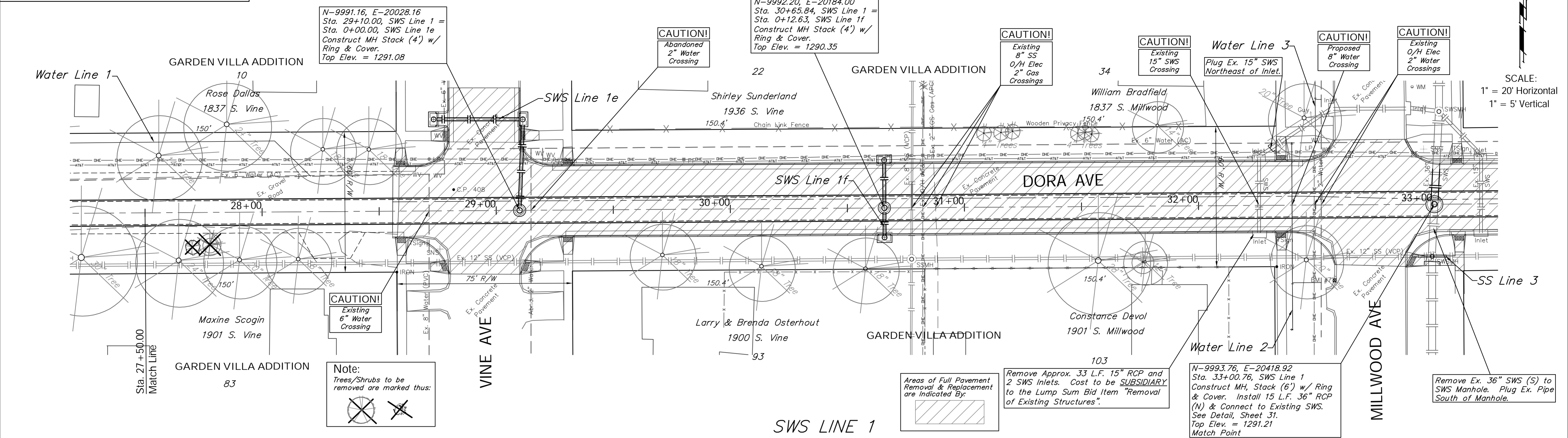


BENCHMARK:
 BM #7 - Chiseled "C" on the North Curb Return of the Drive to 1901 S. Millwood, 36' South and 15' West of the Centerlines of Dora and Millwood.
 Elev. = 1291.22 (NAVD 88)



SCALE:
 1" = 20' Horizontal
 1" = 5' Vertical

