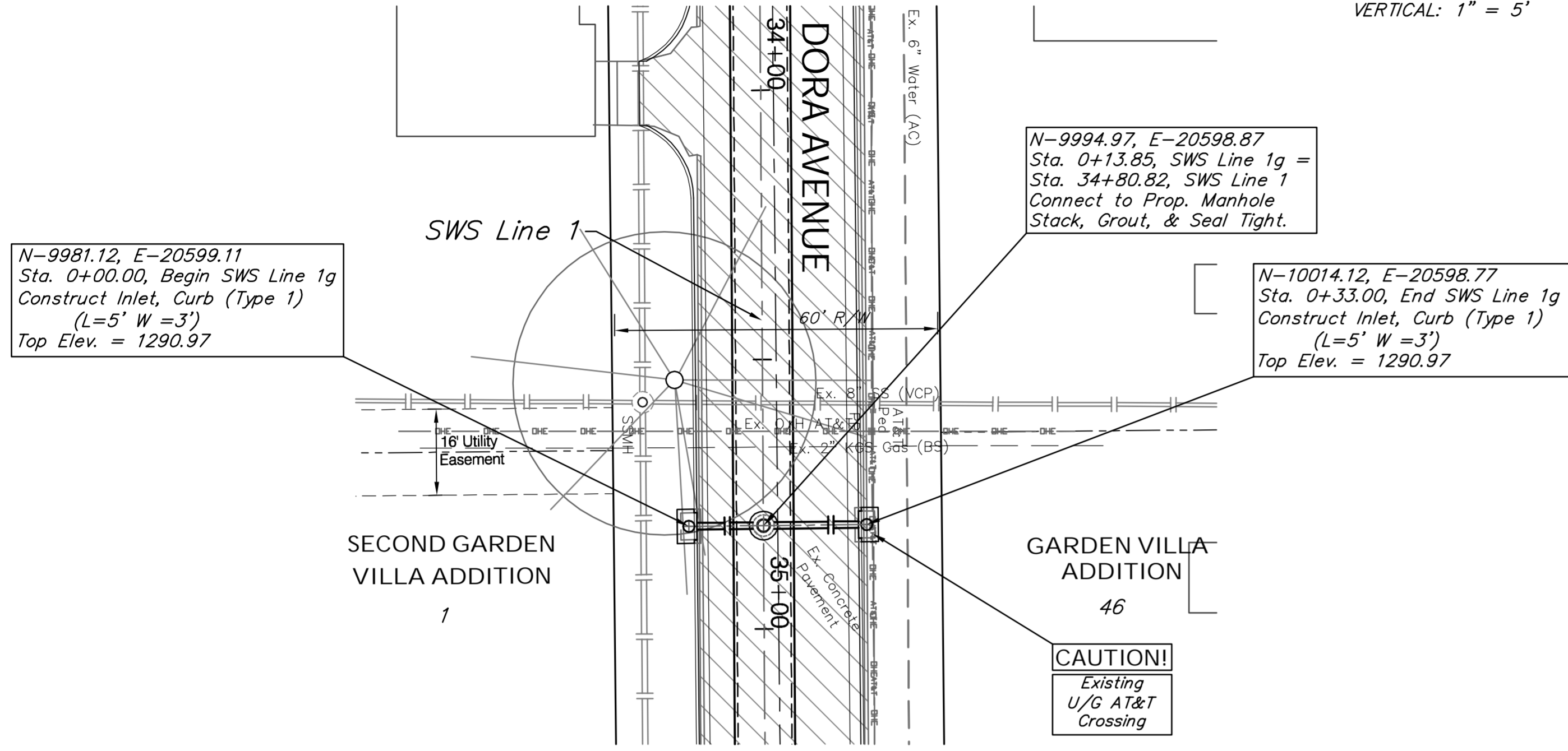


BENCHMARK:  
 BM #7 - Chiseled "□" on the North Curb Return of the Drive to 1901 S. Millwood, 36' South and 15' West of the Centerlines of Dora and Millwood.  
 Elev. = 1291.22 (NAVD 88)

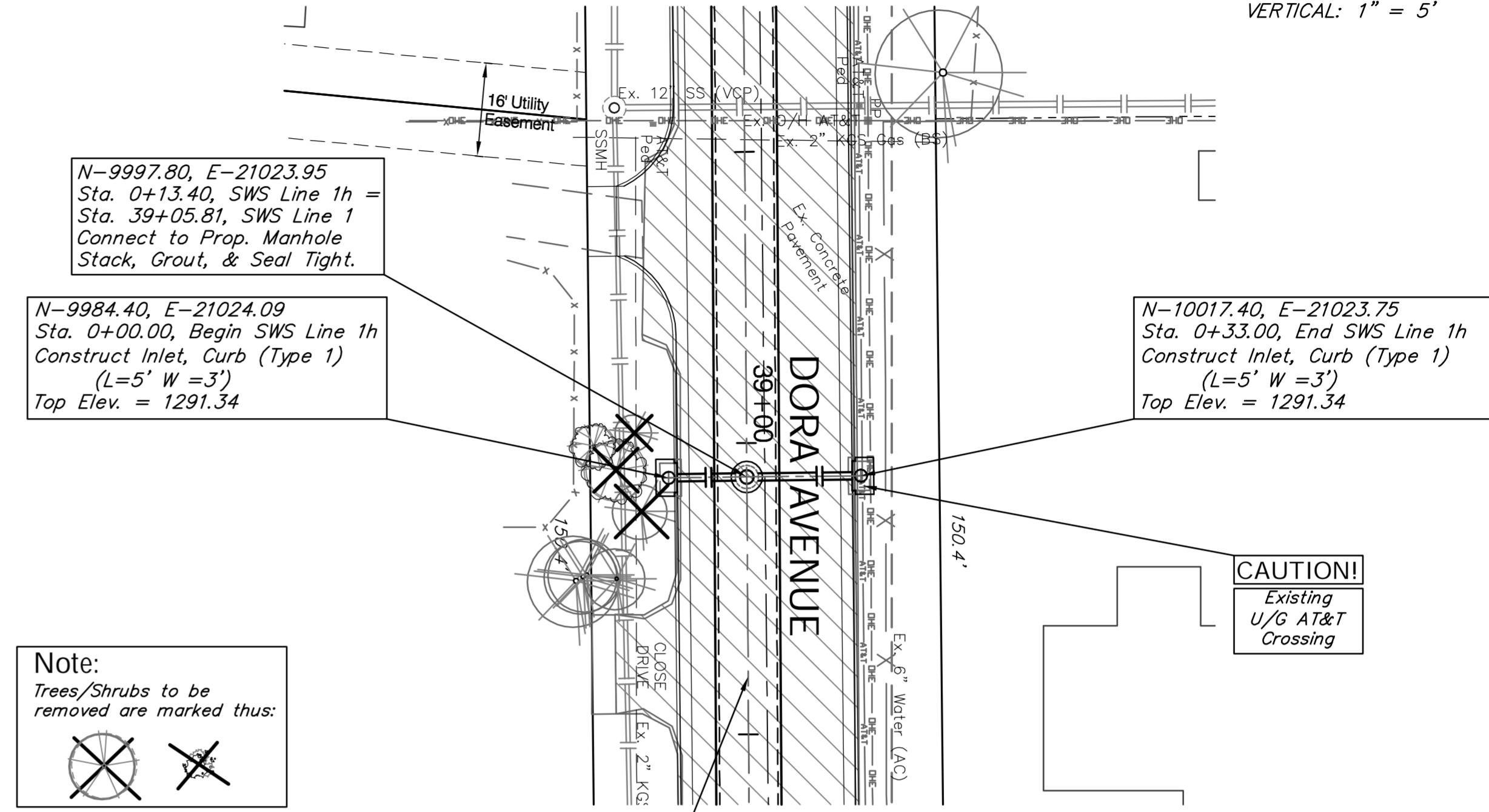
SCALE:  
 HORIZONTAL: 1" = 20'  
 VERTICAL: 1" = 5'



SWS Line 1g

BENCHMARK:  
 BM #8 - Chiseled "□" on the South Curb Return of the Drive to 1836 S. Fern, 68' North and 16' East of the Centerlines of Dora and Fern.  
 Elev. = 1291.79 (NAVD 88)

SCALE:  
 HORIZONTAL: 1" = 20'  
 VERTICAL: 1" = 5'



SWS Line 1h

