

GENERAL NOTES

1. ALL ELEVATIONS SHOWN ARE BASED ON NAVD 88.

2. CONTRACTOR WILL BE REQUIRED TO PROVIDE A MINIMUM ADVANCE NOTICE OF FORTY-EIGHT(48)HOURS TO UTILITY COMPANIES PRIOR TO STARTING ANY EXCAVATION AS FOLLOWS:

KANSAS ONE CALL 687-2470

THE CONTRACTOR MUST NOTIFY THE FOLLOWING IN CASE OF AN EMERGENCY:

Cox Communications 262-4270 or 263-2061
 AT&T 1-800-870-8390
 Kansas Gas Service 1-888-482-4950
 Westar 1-800-383-1183
 Black Hills Energy 1-800-303-0752
 City of Wichita(Water & Sewer) 268-4555

THE CONTRACTOR SHALL NOTIFY PIPELINE COMPANIES AT LEAST 24 HOURS IN ADVANCE OF ANY WORK BEING PERFORMED ACROSS AND/OR ADJACENT TO PIPELINES.

3. COST OF EXCAVATION, HAULING AND DUMPING OF EXCESS EXCAVATION SHALL BE SUBSIDIARY TO OTHER ITEMS OF WORK.

4. THE CONTRACTOR SHALL NOTIFY THE INSPECTOR FOR THIS PROJECT 48 HOURS PRIOR TO BEGINNING CONSTRUCTION. THE CONTRACTOR SHALL NOT START WORK ON THE PROJECT UNTIL THE PROJECT INSPECTOR ASSIGNED TO THE PROJECT IS PRESENT ON SITE. ANY WORK DONE WITHOUT INSPECTION WILL BE REQUIRED TO BE UNCOVERED FOR INSPECTION.

5. THE CONTRACTOR SHALL GIVE ALL PROPERTY OWNERS AND/OR TENANTS OF DEVELOPED PROPERTY DIRECTLY ABUTTING THE CONSTRUCTION OF THIS PROJECT A MINIMUM OF TEN (10) DAYS ADVANCE NOTICE PRIOR TO START OF CONSTRUCTION.

6. THE CONTRACTOR SHALL BE RESPONSIBLE FOR PRESERVING PROPERTY IRONS. THE CONTRACTOR WILL BE REQUIRED TO REESTABLISH ANY PROPERTY IRONS WHICH ARE DAMAGED OR DESTROYED BY CONSTRUCTION OPERATIONS. SUCH IRONS SHALL BE REESTABLISHED BY A LICENSED LAND SURVEYOR IN ACCORDANCE WITH STATE LAWS.

7. THE CONTRACTOR SHALL RESTORE ALL DITCHES, SWALES, ROAD SHOULDERS, ENTRANCES AND BANK LINES TO THEIR ORIGINAL SLOPES AND GRADES WITH SMOOTH TRANSITIONS AND POSITIVE DRAINAGE EXCEPT AS SHOWN OTHERWISE.

8. INTERURBAN TRAFFIC GENERATED OUTSIDE THE PROJECT AREA SHALL BE CARRIED THROUGH CONSTRUCTION. LOCAL RESIDENTIAL TRAFFIC GENERATED WITHIN THE PROJECT AREA SHALL BE CARRIED THROUGH CONSTRUCTION AS FURTHER PROMULGATED BY PROJECT SPECIAL PROVISIONS.

9. UNDERGROUND UTILITY SERVICE LINES AND OVERHEAD UTILITY POLE LINES ARE TO BE ADJUSTED AS NECESSARY BY OTHERS PRIOR TO CONSTRUCTION UNLESS THE PLANS SPECIFICALLY CALL FOR THEIR ADJUSTMENT BY THE CONTRACTOR OR UNLESS THE PLANS SPECIFICALLY IDENTIFY A UTILITY TO BE ADJUSTED BY ITS OWNER DURING CONSTRUCTION. EXISTING UTILITIES AND THEIR LOCATION, AS SHOWN ON THE PLANS, REPRESENT THE BEST INFORMATION OBTAINABLE FOR DESIGN. LOCATION INFORMATION HAS BEEN OBTAINED FROM THE VARIOUS UTILITY COMPANIES AND IS EITHER FROM COMPANY RECORD DRAWINGS OR COMPANY PROVIDED FIELD LOCATIONS. THE CONTRACTOR WILL BE REQUIRED TO WORK AROUND EXISTING UTILITIES WITHIN THE RIGHT-OF-WAY WHICH DO NOT CONFLICT WITH PROPOSED CONSTRUCTION AND SHALL NOTIFY ENGINEER IN CASE OF CONFLICT.

10. RUBBLE FROM THE REMOVAL OF MISCELLANEOUS STRUCTURES AND EXCESS EXCAVATION WHICH IS TO BE WASTED SHALL BE DISPOSED OF ON SITES TO BE PROVIDED BY THE CONTRACTOR. THESE SITES SHALL BE APPROVED BY THE ENGINEER AS TO SUITABILITY, APPEARANCE AND SITE LOCATION. LOCATIONS, THAT IN THE OPINION OF THE ENGINEER, WILL LEAVE AN UNSIGHTLY APPEARANCE WILL NOT BE APPROVED. ALL DISPOSAL SITES MUST BE APPROVED BY THE KANSAS DEPARTMENT OF HEALTH AND ENVIRONMENT. MATERIAL EITHER STOCKPILED OR DISPOSED OF IN A FLOODPLAIN WOULD REQUIRE A KANSAS STATE BOARD OF AGRICULTURE PERMIT. ANY MATERIAL DUMPED IN WATERS OF THE UNITED STATES OR WETLANDS IS SUBJECT TO U.S. CORPS OF ENGINEERS PERMITTING REGULATIONS. ANY MATERIAL BURIED OR STOCKPILED BEYOND APPROVED CONSTRUCTION LIMITS WOULD REQUIRE ADDITIONAL ARCHAEOLOGICAL INVESTIGATIONS UNLESS BURIED IN A PREVIOUSLY APPROVED BORROW LOCATION.

11. THE CONTRACTOR MUST EXAMINE THE CONSTRUCTION SITE PRIOR TO BIDDING AND BE SATISFIED AS TO THE WORK SHOWN FOR COMPLETION. AFTER BIDS HAVE BEEN RECEIVED, THE CONTRACTOR SHALL NOT ASSERT THAT THERE WAS A MISUNDERSTANDING OF THE QUANTITIES OF WORK OR OF THE NATURE FOR THE WORK TO BE COMPLETED.

12. EXISTING UTILITIES AND THEIR LOCATION, AS SHOWN ON THE PLANS, REPRESENT THE BEST INFORMATION AVAILABLE FOR DESIGN. LOCATION INFORMATION HAS BEEN OBTAINED FROM THE VARIOUS UTILITY COMPANIES AND IS EITHER FROM COMPANY RECORD DRAWINGS OR COMPANY PROVIDED FIELD LOCATIONS. THE PLAN LOCATIONS ARE NOT GUARANTEED. ADDITIONAL EXISTING UTILITIES MAY ALSO BE ENCOUNTERED. THE CONTRACTOR WILL BE REQUIRED TO WORK AROUND EXISTING UTILITIES WHICH ARE ENCOUNTERED ON THIS PROJECT. THE CONTRACTOR SHALL EXERCISE EXTREME CAUTION DURING TRENCHING OPERATIONS TO AVOID DAMAGING THESE LINES. ANY LINES DAMAGED SHALL BE REPLACED OR REPAIRED IMMEDIATELY AS DIRECTED BY THE ENGINEER AT THE CONTRACTOR'S EXPENSE.

13. ALL PIPE JOINTS SHALL BE LAID AND PUSHED 'FULL HOME' WITH THE BEVELED END OF THE SPIGOT MAKING FULL CONTACT WITH THE CHAMFERED AREA AT THE THROAT OF THE BELL OR SOCKET, WITH NO SEPARATION BETWEEN THEM. IF SEPARATION IS DETERMINED, THE PIPE SHALL BE EXCAVATED AND RE-LAID ACCORDING TO SPECIFICATIONS AT THE CONTRACTOR'S EXPENSE.

14. AT LEAST 24 HOURS BEFORE CONNECTING NEW SEWER PIPE TO THE EXISTING SEWAGE SYSTEM, THE CONTRACTOR SHALL CONTACT THE CITY OF WICHITA SEWER DEPARTMENT (268-4024). THE CONTRACTOR SHALL KEEP ANY CONSTRUCTION DEBRIS FROM ENTERING THE EXISTING SANITARY SEWER DURING CONSTRUCTION. TO PREVENT WATER OR DEBRIS FROM ENTERING THE EXISTING SEWER, A MECHANICAL PLUG SHALL BE INSTALLED AND MAINTAINED TO ISOLATE THE EXISTING SEWER FROM THE NEW CONSTRUCTION UNTIL THE NEW CONSTRUCTION IS CLEANED, TELEVIEWED AND HAS BEEN ACCEPTED. THE WATER USED FOR CLEANING SHALL NOT BE ADDED TO THE FLOW OF THE EXISTING SEWER. THE CLEANING OR OTHERWISE ACCUMULATED WATER SHALL BE PUMPED OR OTHERWISE REMOVED PRIOR TO TELEVIEWING.

15. THE CONTRACTOR SHALL CONTAIN HIS OPERATIONS TO PERMIT TRAFFIC THROUGH AND ACROSS CONSTRUCTION AT EXISTING ROADWAYS AT ALL TIMES. THE CONTRACTOR SHALL ERECT WARNING SIGNS, FLASHING LIGHTS, AND BARRICADES IN COMPLIANCE WITH THE MANUAL ON UNIFORM TRAFFIC CONTROL DEVICES TO ENSURE SAFETY AS DIRECTED IN THE GENERAL CONDITIONS. THE CONTRACTOR SHALL LIMIT THE EXTENT OF TRENCH TO REMAIN OPEN OVERNIGHT AND WEEKENDS TO LESS THAN 50 FEET.

16. THE CONTRACTOR SHALL PROVIDE POSITIVE DRAINAGE AWAY FROM ALL MANHOLE COVERS.

STORM WATER SEWER IMPROVEMENTS

TO SERVE

NORTH IVA & 27TH STREET

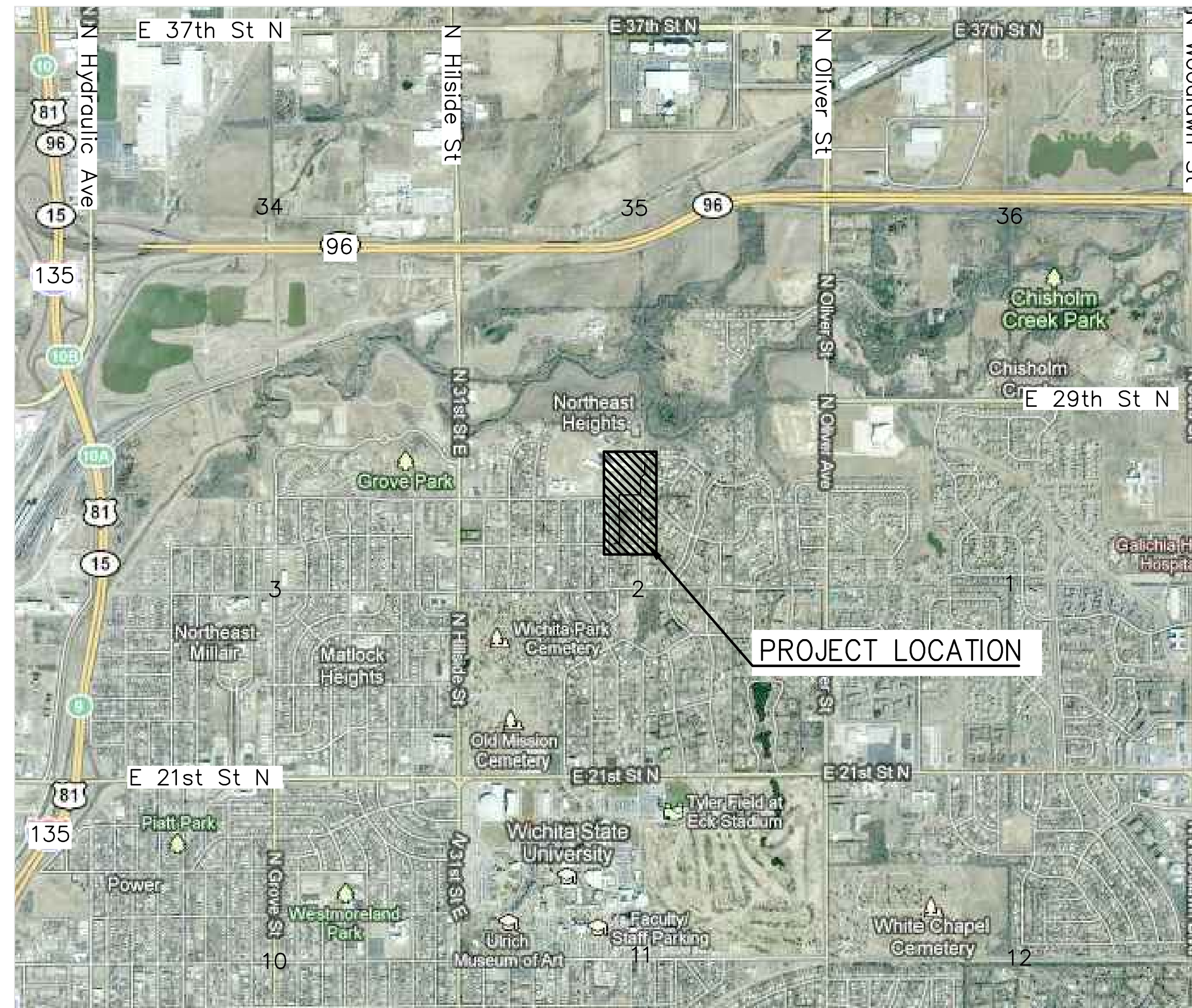
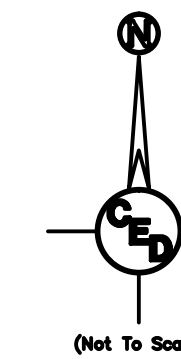
WICHITA, SEDGWICK COUNTY, KANSAS

CITY OF WICHITA PRIVATE PROJECT NO.:

468-84709 (O.C.A. NO. 133117),

JAMES L. ARMOUR, P.E., CITY ENGINEER

OCTOBER 2011



PROJECT LOCATED IN THE NW 1/4, SEC 2, T27S, R1E, WICHITA, SEDGWICK COUNTY, KANSAS

Sheet List Table	
Sheet Number	Sheet Title
1	COVER SHEET
2	SURVEY CONTROL PLAN
3	DEMOLITION PLAN
4	DEMOLITION PLAN (CONT'D)
5	DEMOLITION PLAN (CONT'D)
6	SITE PLAN
7	STAKING CONTROL PLAN
8	EROSION CONTROL PLAN
9	EROSION CONTROL PLAN
10	EROSION CONTROL PLAN
11	SWS LINE 1 PLAN AND PROFILE
12	SWS LINE 1 PLAN AND PROFILE
13	SWS LINE 1 PLAN AND PROFILE
14	SWS LINE 1 PLAN AND PROFILE
15	SWS LINE 1 PLAN AND PROFILE
16	SWS LINE 1 PLAN AND PROFILE
17	SWS LINE 1 PLAN AND PROFILE
18	SWS LINE 2 & 3 PLAN AND PROFILE
19	SWS LINE 4 & 5 PLAN AND PROFILE
20	SWS LINE 6 & 7 PLAN AND PROFILE
21	SWS LINE 8 & 9 PLAN AND PROFILE
22	PROPOSED GRADING PLAN AND PROFILE
23	WATER LINE RELOCATION PLAN AND PROFILE
24	WATER LINE RELOCATION PLAN AND PROFILE
25	WATER LINE RELOCATION PLAN AND PROFILE
26	EROSION CONTROL DETAILS
27	EROSION CONTROL DETAILS
28	EROSION CONTROL DETAILS
29	EROSION CONTROL DETAILS
30	EROSION CONTROL DETAILS
31	STD. TYPE 1 CURB INLET DETAILS (5' OR 10' OPENING)
32	STD. TYPE 1 CURB INLET DETAILS (15' OPENING)
33	HEADWALL DETAILS
34	DROP INLET DETAILS
35	TYPE 'A' & 'B' MANHOLE DETAILS
36	REINFORCED CONCRETE MANHOLE DETAILS
37	MH-INLET FRAME & COVER DETAILS
38	CONCRETE PAVEMENT DETAILS
39	VALLEY GUTTER & WHEELCHAIR RAMP DETAILS
40	INTERSECTION GRADING DETAIL (26TH & IVA)
41	INTERSECTION GRADING DETAIL (27TH & BLUFF)
42	MISC. WATER MAIN DETAILS
43	X-SECTIONS NORTH IVA STREET ALLEY
44	X-SECTIONS NORTH IVA STREET ALLEY
45	X-SECTIONS NORTH IVA STREET ALLEY

SUMMARY OF STORM WATER SEWER IMPROVEMENT QUANTITIES								
DESCRIPTION	QUANTITY	UNIT	DESCRIPTION	QUANTITY	UNIT	DESCRIPTION	QUANTITY	UNIT
24" Reinforced Concrete Pipe Storm Sewer (Class II Pipe)	311	L.F.	Concrete Driveway 8" (Reinf.) Removed	26	S.Y.	Wheelchair Ramp	4	Each
30" Reinforced Concrete Pipe Storm Sewer (Class II Pipe)	1108	L.F.	Concrete Driveway 8" (Reinf.) Remove and Replace	50	S.Y.	Wheelchair Ramp w/ Detectable Warnings	8	Each
36" Reinforced Concrete Pipe Storm Sewer (Class II Pipe)	556	L.F.	Concrete &/or Asphalt Pavement Removed	1229	S.Y.	Sodding	155	S.Y.
42" Reinforced Concrete Pipe Storm Sewer (Class II Pipe)	426	L.F.	Concrete Pavement 7" (Reinf.) New	958	S.Y.	Seeding/Mulching/Fertilizing	1	Acre
42" RC Headwall	1	Each	Concrete Pavement 7" (Reinf.), Removed & Replaced	64	S.Y.	Tree Removal Small	7	Each
Inlet, Curb (Special, Type 1)(L=9',W=4')	3	Each	Concrete Pavement (VG) 7" (Reinf.), New	245	S.Y.	Tree Removal Large	4	Each
Inlet, Curb (Type 1)(L=5',W=3')	10	Each	AC Pavement 5" Removed & Replaced	265	S.Y.	Heavy Stone Rip-Rap	183	S.Y.
Inlet, Curb (Type 1)(L=10',W=5')	2	Each	5" Crushed Rock Base	1150	S.Y.	BMP, Construction Entrance	1	Each
Inlet, Curb (Type 1)(L=15',W=5')	1	Each	Fill, Flowable	50	L.F.	BMP, Curb Inlet Protection	16	Each
Inlet, Area (L=4',W=4')	5	Each	Fill, Sand (Flushed & Vibrated)	390	L.F.	BMP, Area Inlet Protection	6	Each
Inlet, Area (L=6',W=6')	1	Each	Concrete Sidewalk 4" Removed	629	S.Y.	Site Clearing	1	L.S.
Inlet Hookup	16	Each	Concrete Sidewalk 4" Removed & Replaced	2035	S.F.	Site Restoration	1	L.S.
Manhole Type A Standard (5')	3	Each	Concrete Sidewalk 4" New	390	S.F.	Excavation	682	C.Y.
Manhole Reinforced Concrete (4'-6"x4'-6")	3	Each	Concrete Curb, Mono Edge (6" & 1-1/2"), New	282	L.F.	Compaction	157	C.Y.
Manhole Reinforced Concrete (6'-0"x6'-0")	3	Each	Concrete C&G Combo,(6" & 1-1/2"), New	253	L.F.	8" DICL Water Line	169	L.F.
Manhole Adjusted W/New Ring & Cover	1	Each	Concrete C&G Combo,(6" & 1-1/2"), Removed & Replaced	10	L.F.	8" Anchored Valve Assembly	1	Each
Sawcut Concrete-Full Depth	1079	L.F.	Concrete C&G Combo,(6" & 1-1/2"), Removed	494	L.F.	8" Pipe, CIMJ Plug	1	Each
						8" Pipe, Cut & Cap	2	Each

REV.	DESCRIPTION	DATE

Sheet List Table	
Sheet Number	Sheet Title
1	COVER SHEET
2	SURVEY CONTROL PLAN
3	DEMOLITION PLAN
4	DEMOLITION PLAN (CONT'D)
5	DEMOLITION PLAN (CONT'D)
6	SITE PLAN
7	STAKING CONTROL PLAN
8	EROSION CONTROL PLAN
9	EROSION CONTROL PLAN
10	EROSION CONTROL PLAN
11	SWS LINE 1 PLAN AND PROFILE
12	SWS LINE 1 PLAN AND PROFILE
13	SWS LINE 1 PLAN AND PROFILE
14	SWS LINE 1 PLAN AND PROFILE
15	SWS LINE 1 PLAN AND PROFILE
16	SWS LINE 1 PLAN AND PROFILE
17	SWS LINE 1 PLAN AND PROFILE
18	SWS LINE 2 & 3 PLAN AND PROFILE
19	SWS LINE 4 & 5 PLAN AND PROFILE
20	SWS LINE 6 & 7 PLAN AND PROFILE
21	SWS LINE 8 & 9 PLAN AND PROFILE
22	PROPOSED GRADING PLAN AND PROFILE
23	WATER LINE RELOCATION PLAN AND PROFILE
24	WATER LINE RELOCATION PLAN AND PROFILE
25	WATER LINE RELOCATION PLAN AND PROFILE
26	EROSION CONTROL DETAILS
27	EROSION CONTROL DETAILS
28	EROSION CONTROL DETAILS
29	EROSION CONTROL DETAILS
30	EROSION CONTROL DETAILS
31	STD. TYPE 1 CURB INLET DETAILS (5' OR 10' OPENING)
32	STD. TYPE 1 CURB INLET DETAILS (15' OPENING)
33	HEADWALL DETAILS
34	DROP INLET DETAILS
35	TYPE 'A' & 'B' MANHOLE DETAILS
36	REINFORCED CONCRETE MANHOLE DETAILS
37	MH-INLET FRAME & COVER DETAILS
38	CONCRETE PAVEMENT DETAILS
39	VALLEY GUTTER & WHEELCHAIR RAMP DETAILS
40	INTERSECTION GRADING DETAIL (26TH & IVA)
41	INTERSECTION GRADING DETAIL (27TH & BLUFF)
42	MISC. WATER MAIN DETAILS
43	X-SECTIONS NORTH IVA STREET ALLEY
44	X-SECTIONS NORTH IVA STREET ALLEY
45	X-SECTIONS NORTH IVA STREET ALLEY

NORTH IVA & 27TH STREET NORTH
 DRAINAGE IMPROVEMENTS
 SEC. 2, T27S, R1E
 WICHITA, KANSAS

CERTIFIED ENGINEERING DESIGN, P.A.
 CIVIL ENGINEERING SERVICES



1935 WEST MAPLE STREET
 WICHITA, KANSAS 67213
 PH.(316)262-8808 FAX.(316)262-1669

ISSUED FOR CONSTRUCTION

PROJECT NO.: 20101910
 ISSUE DATE: 10/20/2011
 CONTACT: C WINKLER / H FORAKER
 DRAWN BY: CC, CW | CHECKED BY: HDF

COVER SHEET

