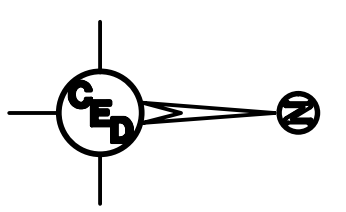
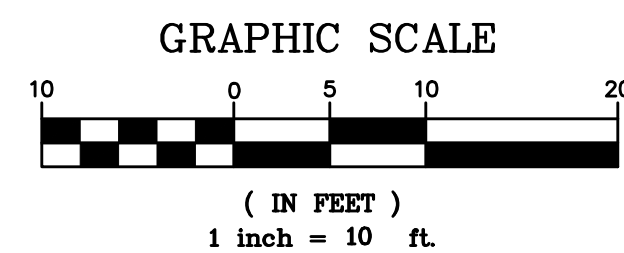
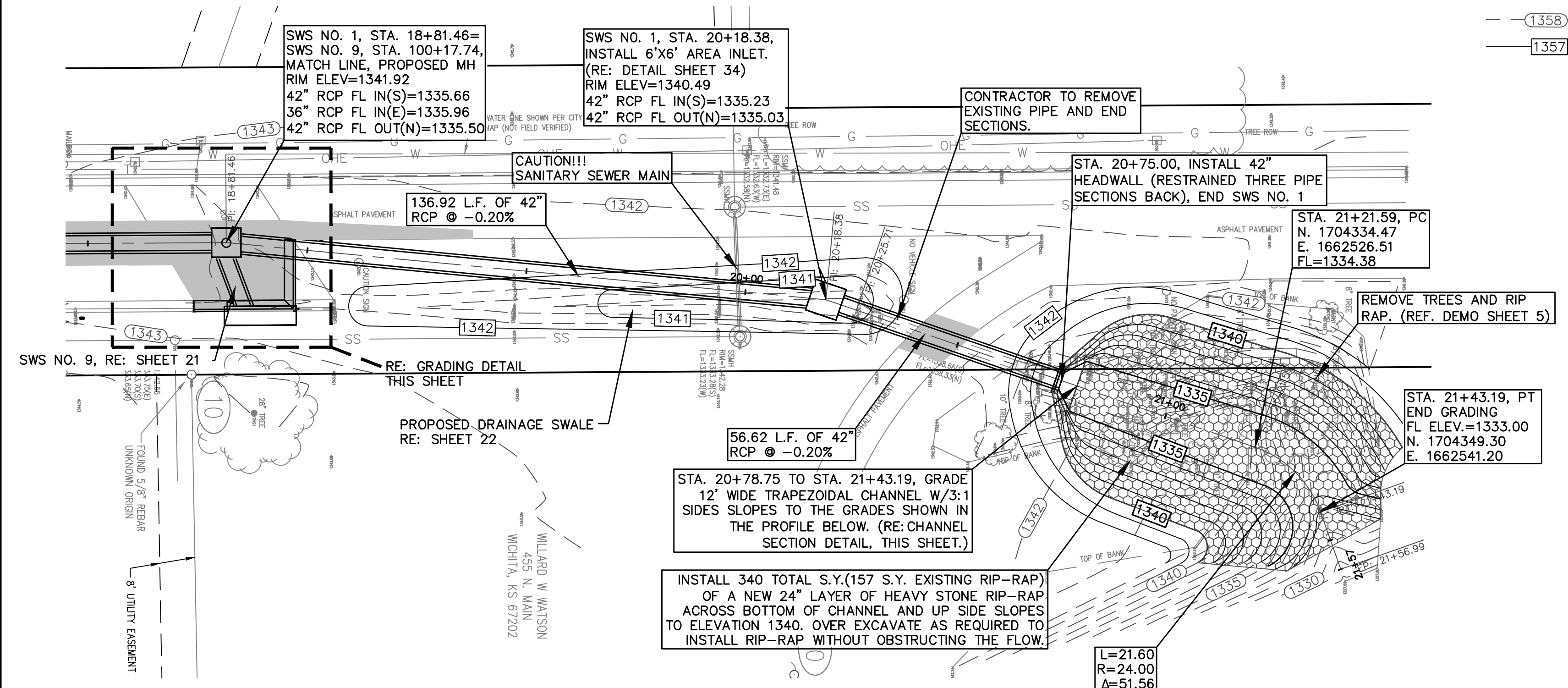


UTILITY RELOCATION NOTE:
 ALL UTILITY OWNERS HAVE BEEN NOTIFIED OF REQUIRED UTILITY RELOCATIONS DUE TO PROJECT IMPROVEMENTS. CONTRACTOR SHALL VERIFY ALL EXISTING UTILITY ELEVATIONS AND COORDINATE WITH UTILITY OWNERS ON THE STATUS OF THE REQUIRED UTILITY RELOCATES AND/OR PLANS FOR RELOCATION DURING CONSTRUCTION.

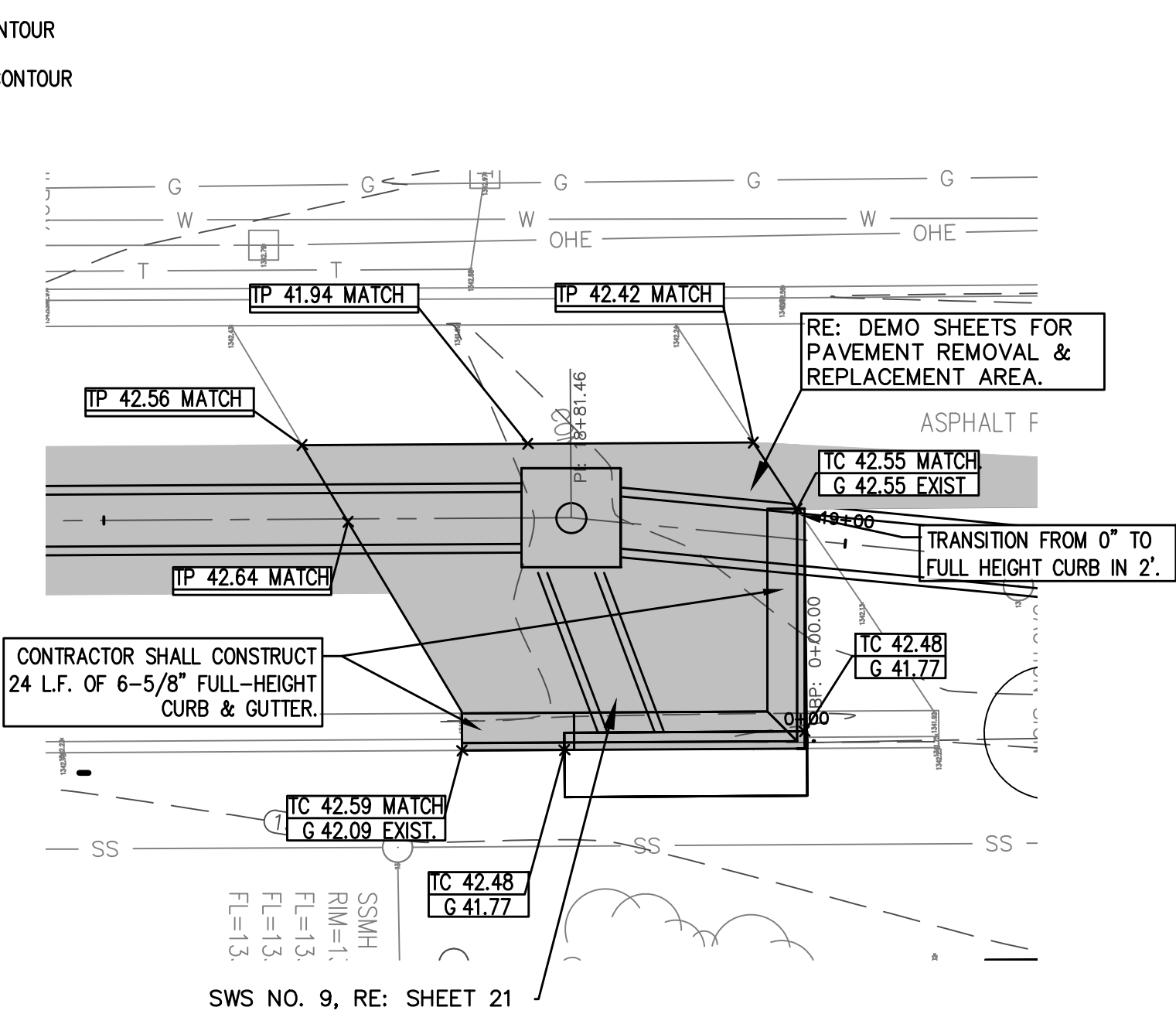
KANSAS GAS SERVICE	PAMELA GUNTER	0:1-316-832-3187	0:1-888-482-4950
WESTAR ENERGY	HEIDE HANCOCK	0:1-316-261-6824	0:1-888-383-1183
AT&T	JASON EDWARDS	0:1-316-268-2008	0:1-800-870-8390
COX COMMUNICATIONS	JEREMY WALLACE	0:1-316-260-7195	0:263-2061
C.O.W. WATER & SEWER	GREG LOLLEY	0:1-316-268-4555	



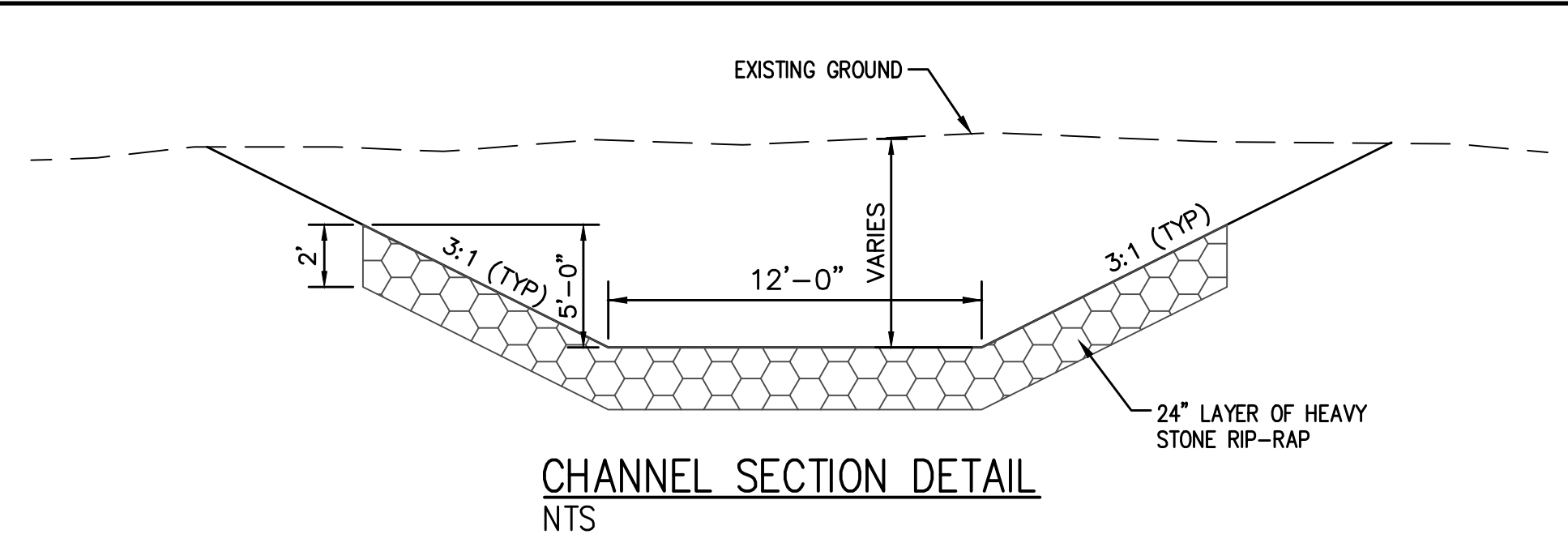
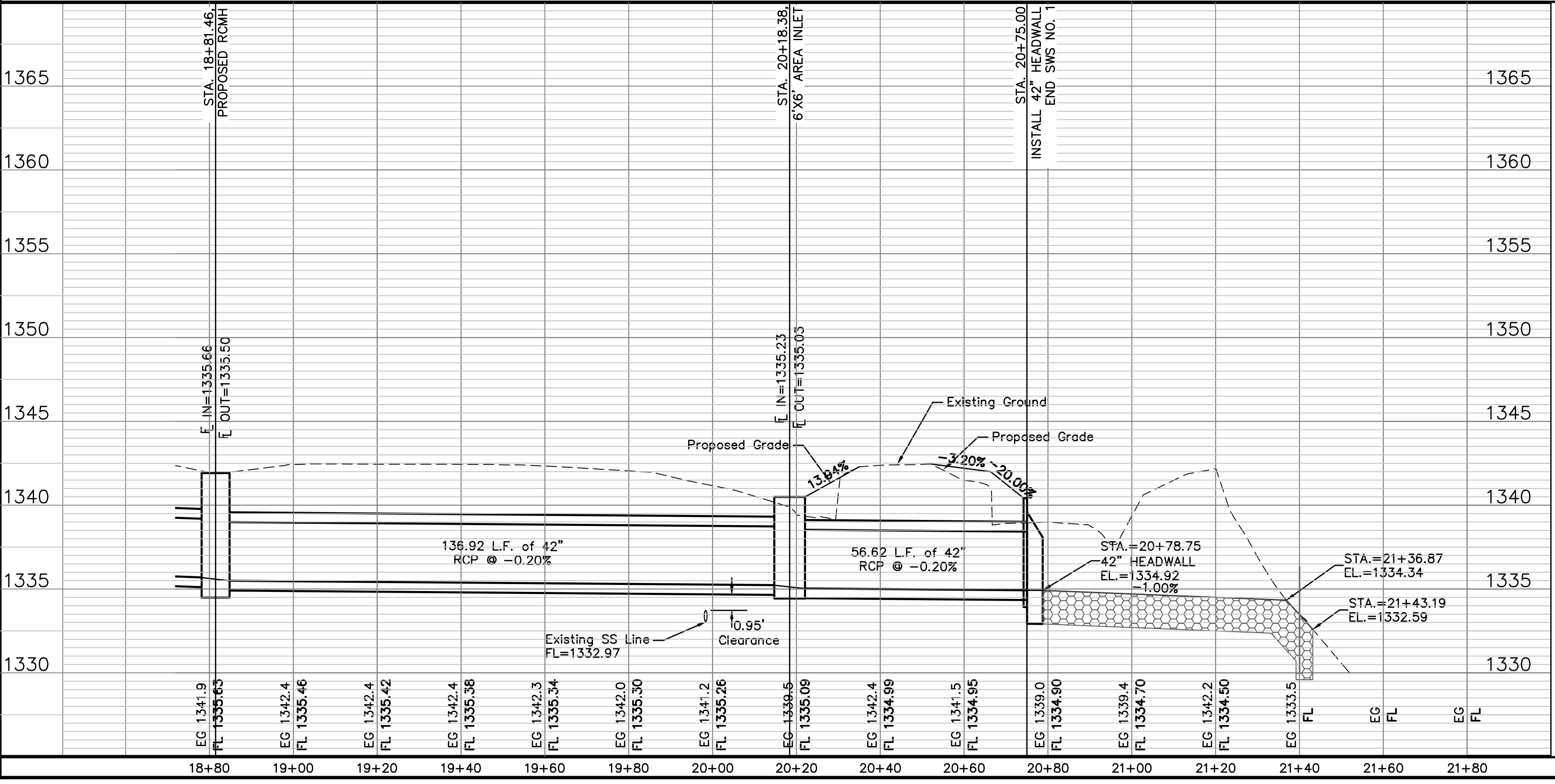
REV.	DESCRIPTION	DATE



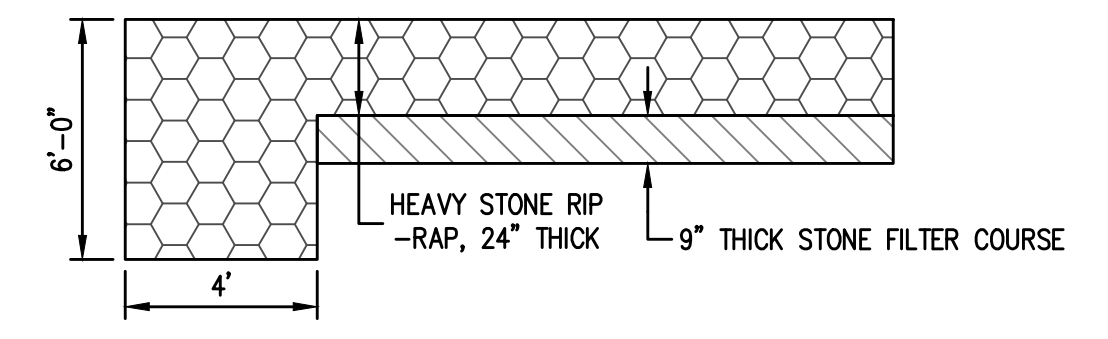
SWS Line 1



GRADING DETAIL



CHANNEL SECTION DETAIL



RIP-RAP TOEWALL TYPICAL SECTION

- TOEWALLS SHALL BE INSTALLED AT THE DOWN STREAM END OF THE CHANNEL IMPROVEMENTS.
- TOEWALL AND BOTTOM OF SWALE SHALL BE SLURRY GROUTED.

NORTH IVA & 27TH STREET NORTH

DRAINAGE IMPROVEMENTS

SEC. 2, T27S, R1E
 WICHITA, KANSAS

CERTIFIED ENGINEERING DESIGN, P.A.
 CIVIL ENGINEERING SERVICES



1935 WEST MAPLE STREET
 WICHITA, KANSAS 67213
 PH.(316)262-8808 FAX.(316)262-1669

ISSUED FOR CONSTRUCTION

PROJECT NO.: 20101910
 ISSUE DATE: 10/20/2011
 CONTACT: C WINKLER / H FORAKER
 DRAWN BY: CC, CW CHECKED BY: HDF

SWS LINE 1 PLAN AND PROFILE