

Remove and replace 986 lf of 8" pipe from MH 5445-277 to MH 5445-271

Remove and replace 20 lf of Pavement
Remove and replace 7 lf of Concrete Approach
Install 27 lf of Flowable Fill
(no water or storm to cross in Funston)

MH 5445-277
Est. depth = 7.0 ft
(precast manhole)

MH 5445-275
Remove Manhole
Construct Standard Manhole
Approx MH depth = 7.7 ft

MH 5445-273
Remove & Replace MH Bench & Invert
Approx MH depth = 6.6 ft

Remove and replace 35 lf of Pavement (incl gutters)
Remove and replace 7 lf of Concrete Approach (S)
Install 42 lf of Flowable Fill
(no water or storm to cross in Skinner)

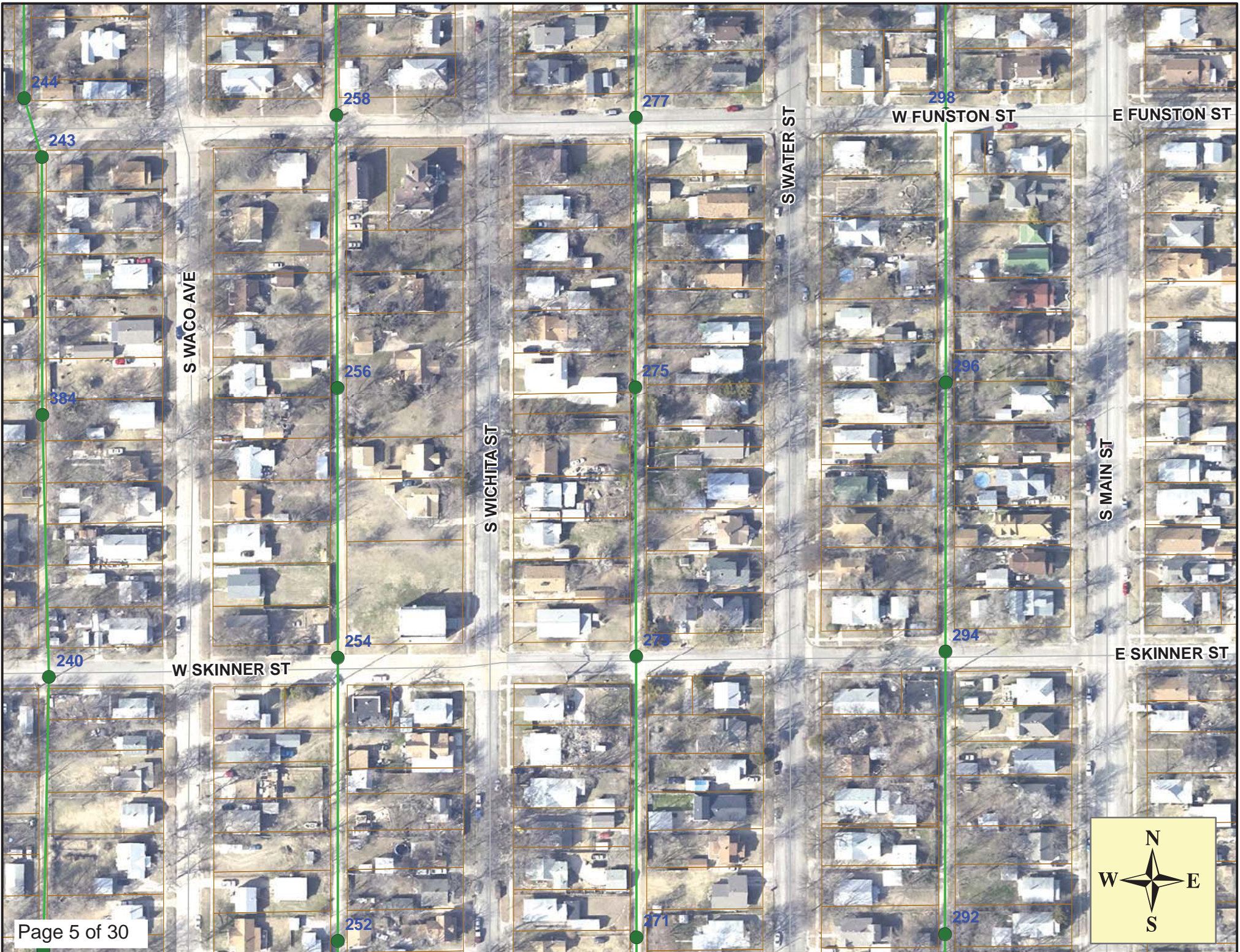
MH 5445-271
Remove Manhole
Construct Standard Manhole
Approx MH depth = 7.7 ft

Estimated 38 Service Reconnections (4")
Estimated 1 Service Reconnection (6")

Restoration of unpaved alleys shall be subsidiary to Site Restoration.

SITE 1







Video Inspection Master Report

12/28/2012

7:46 AM

US Structure: 5445-277 1758 S WATER ST Date Insp: 7/3/2012 Basin: C05D
 DS Structure: 5445-275 1825 S WATER ST Dir Televised: Upstream To Downstream

Pipe Information

Shape: Round Length Status: Project No. : B-089
 Dia/Ht: 8 Material: VCP Index:
 Length: 324.7 Slope: 0.120 Surface:

Obs. #	VTR Counter	Distance	Location	Description	Rating	Ratings			Remain (gpm)
						Obsrvd (gpm)	Est. (gpm)	Struct Clean	
1		0.0	5445-277	(precast manhole) US Manhole	1				
2		0.0		Pipe begins as PVC	1				
0		3.0		Material Chngs to VCP	1				
3		8.6		Crack-Radial	3				
4		30.3		Sealed Off Wye	1				
5		31.5	invert	Crack-Radial	5				
6		33.2		Sealed Off Wye	1				
7		49.5		Crack-Radial	3				
8		52.0	invert	Crack-Radial	5				
9		56.3	1802 S WICHITA	Wye Service	5				Tap is off the main / cavity
11		58.8		Sealed Off Wye	1				
12		59.9		Crack-Radial	3				
13		75.1		Grease	2				
14		77.8		Grease	2				
15		81.9	1808 S WICHITA	Wye Service	4				Full of roots / can't see in service line
16		84.5	1801 S WATER	Wye Service	4				Full of roots and/or grease
17		87.7		Crack-Radial	2				
18		97.8		Crack-Radial	3				
19		103.8	Grease bridged on pipe at ¾ tile mark	Grease	4				
20		107.1	1810 S WICHITA	Wye Service	5				Full of grease
21		108.9	1807 S WATER	Break-In Conn	1				
22		111.6		Grease	2				
23		116.5		Grease	2				
24		118.6		Crack-Radial	4				
25		127.7	(slight sag area / pipe is holding water)	Grease	4				
26		132.6	1816 S WICHITA	Wye Service	5				Full of grease
27		135.4	1811 S WATER	Wye Service	3				(turned on cleaner to pull down water level)
28		141.8		Crack-Radial	3				
29		151.5		Crack-Radial	3				
30		158.6	1820 S WICHITA	Wye Service / cracked	3				
31		161.0		Sealed Off Wye	1				
32		164.4		Observation Hole	5				Broken & shifting pipe around the OH
33		179.6		Crack-Radial	2				



Video Inspection Master Report

12/28/2012

7:46 AM

US Structure: 5445-277 1758 S WATER ST Date Insp: 7/3/2012 Basin: C05D
 DS Structure: 5445-275 1825 S WATER ST Dir Televised: Upstream To Downstream

34	182.3		Crack-Radial	2	
35	184.0		Sealed Off Wye	1	
36	186.7	1813 S WATER	Wye Service	2	Roots
37	187.5		Crack-Radial	2	
38	202.2		Crack-Radial	2	
39	209.3	1822 S WICHITA	Wye Service	5	Missing pipe / creating small cavity
41	212.0	1817 S WATER	Wye Service	3	Roots
42	220.3		Crack-Radial	5	
43	230.4	Invert	Crack-Radial	5	
44	234.6		Sealed Off Wye	1	
45	237.2	1821 S WATER	Wye Service	4	Missing pipe on wye
46	238.6		Crack-Radial	1	
47	242.7	1822 S WICHITA	Break-In Conn	1	
48	243.3		Crack-Radial	1	
49	248.5		Crack-Radial	2	
50	251.3		Crack-Radial	2	
51	260.3		Sealed Off Wye	1	
52	262.9	1825 S WATER	Wye Service	5	Broken off the main / cavity outside of main
53	264.1		Crack-Radial	3	
54	279.7		Crack-Radial	3	
55	285.9		Sealed Off Wye	1	
56	287.4		Crack-Horizontal	3	
57	288.0	1825 S WATER	PVC Break-In Conn	1	
58	311.4		Sealed Off Wye	1	
59	314.1		Sealed Off Wye	1	
60	317.8		Crack-Radial	3	
61	322.9	5445-275	DS Manhole	1	

RECORD FOR SAGS:

62	80.3		Sag begins	1	
63	82.0		Sag / water over lens	5	
65	87.5		Sag ends	1	
66	106.0		Sag begins	1	
67	108.9		Sag / water over lens	5	
69	146.9		Sag ends	1	



Video Inspection Master Report

12/28/2012

7:46 AM

US Structure: 5445-275 1825 S WATER ST Date Insp: 7/3/2012 Basin: C05D
 DS Structure: 5445-273 1868 S WICHITA ST Dir Televised: Upstream To Downstream

Pipe Information

Shape: Round Length Status: Project No. : B-089
 Dia/Ht: 8 Material: VCP Index:
 Length: 323.7 Slope: 0.117 Surface:

Obs. #	VTR Counter	Distance	Location	Description	Rating	Ratings			Remain (gpm)
						Obsrvd (gpm)	Est. (gpm)	Struct Clean	
1		0.0	5445-275	US Manhole	1				
2		9.2		Crack-Radial	2				
3		13.4	1822 S WICHITA	Wye Service	4				Broken wye
4		15.8	1829 S WATER	Wye Service	5				Broken off the main / cavity outside of main
6		22.2		Crack-Radial	2				
7		32.0	1822 S WICHITA	Break-In Conn	1				
8		38.7		Sealed Off Wye	2				
9		41.3		Sealed Off Wye	1				
10		42.4		Crack-Radial	2				
11		52.2		Crack-Radial	3				
12		64.1		Sealed Off Wye	1				
13		65.1		Crack-Radial	2				
14		66.5		Sealed Off Wye	1				
15		67.8	1835 S WATER	Break-In Conn	4				Broken pipe on tap / not completely connected
16		85.6		Crack-Radial	2				
17		89.5		Sealed Off Wye	2				
18		89.6	1832 S WICHITA	Break-In Conn	1				
19		91.8		Sealed Off Wye	1				
20		115.0		Sealed Off Wye	1				
21		117.5		Sealed Off Wye	1				
22		126.1		Crack-Radial	2				
23		138.7	1834 S WICHITA	Break-In Conn	5				Pipe busted all around the tap
24		141.9	1837 S WATER	PVC Break-In Conn	1				
25		161.2		Observation Hole	5				Pipe busted all around the OH
26		165.1		Sealed Off Wye	1				
27		167.8	1837 S WATER	Wye Service	1				
28		183.9		Crack-Radial	2				
29		186.4		Crack-Radial	2				
30		188.4	1836 S WICHITA	Break-In Conn	1				
31		190.6		Sealed Off Wye	1				
32		193.3	1839 S WATER	Wye Service	1				



Video Inspection Master Report

12/28/2012

7:46 AM

US Structure: 5445-275 **1825 S WATER ST** **Date Insp: 7/3/2012** **Basin: C05D**
DS Structure: 5445-273 **1868 S WICHITA ST** **Dir Televised:Upstream To Downstream**

33	199.3		Crack-Radial	1	
34	209.6		Crack-Radial	2	
35	216.1		Sealed Off Wye	1	
36	218.6		Sealed Off Wye	1	
37	229.7		Crack-Radial	2	
38	232.3		Crack-Radial	1	
39	241.5	1846 S WICHITA	Wye Service	2	
40	244.2	1841 S WATER	Wye Service	3	Breaking off the main
41	255.2		Crack-Radial	1	
42	257.7		Crack-Radial	2	
43	266.5		Sealed Off Wye	1	
44	269.2	1845 S WATER	Wye Service	5	Broken off the main / cavity outside of main
45	280.2		Crack-Radial	5	
46	290.3	1868 S WICHITA	Break-In Conn	4	
47	294.3		Sealed Off Wye	1	
48	323.4	5445-273	DS Manhole	1	



Video Inspection Master Report

12/28/2012

7:46 AM

US Structure: 5445-273 1868 S WICHITA ST Date Insp: 7/3/2012 Basin: C05D
 DS Structure: 5445-271 1927 S WATER ST Dir Televised: Upstream To Downstream

Pipe Information

Shape: Round Length Status: Project No. : B-089
 Dia/Ht: 8 Material: VCP Index:
 Length: 338.8 Slope: 0.121 Surface:

Obs. #	VTR Counter	Distance	Location	Description	Rating	Obsrvd (gpm)	Ratings		Remain (gpm)
							Est. (gpm)	Struct Clean	
1		0.0	5445-273	US Manhole	1				
2		34.9		Crack-Radial	3				
3		46.6		Sealed Off Wye	1				
4		49.2		Sealed Off Wye	1				
5		66.8	207 W SKINNER	Break-In Conn	1				vacant lot?
6		72.0	1902 S WICHITA	Wye Service	5				Broken off the main / cavity
7		72.9		Crack-Radial	3				
8		74.5		Sealed Off Wye	1				
9		88.1		Crack-Radial	3				
10		91.3	1901 S WATER	Break-In Conn	1				
11		94.7		Sealed Off Wye	1				
12		97.2	1907 S WATER	Wye Service	1				
13		119.4	1906 S WICHITA	Wye Service	1				
14		122.8		Sealed Off Wye	1				
15		123.8		Crack-Radial	2				
16		126.3		Crack-Radial	2				
17		145.5		Sealed Off Wye	1				
19		148.4	1911 S WATER	Wye Service	5				Broken off the main / cavity
20		159.9		Crack-Radial	3				
21		168.8		Observation Hole	5				Collapsing / broken & missing pipe
22		169.7	1908 S WICHITA	Break-In Conn	3				
23		173.4		Sealed Off Wye	1				
24		196.5		Sealed Off Wye	1				
25		198.3	1917 S WATER	Wye Service	1				
26		208.2	1916 S WICHITA	Break-In Conn	2				Poor condition
27		217.9		Crack-Radial	1				
28		221.9		Sealed Off Wye	1				
29		223.6	1919 S WATER	Break-In Conn	5				Broken off the main
30		230.5		Crack-Radial	1				
31		247.0		Sealed Off Wye	1				
32		249.5		Sealed Off Wye	1				



Video Inspection Master Report

12/28/2012

7:46 AM

US Structure: 5445-273 1868 S WICHITA ST Date Insp: 7/3/2012 Basin: C05D
 DS Structure: 5445-271 1927 S WATER ST Dir Televised: Upstream To Downstream

33	268.5		Crack-Radial	3	
34	272.1	1920 S WICHITA	PVC Break-In Conn	1	
35	275.0		Sealed Off Wye	1	
36	286.0		Crack-Radial	3	
	292.0		sag begins		
37	297.8		Sealed Off Wye	1	
38	299.5	1921 S WATER	Extended Tap	3	PVC service pipe sticks into the main
39	301.1	1922 S WICHITA	Break-In Conn	5	Breaking off the main
	314.0		sag ends		
40	323.1		Sealed Off Wye	1	
41	323.6	Offset Joint	Mat. Chngs to PVC	1	
42	325.4	1927 S WATER	PVC Break-In Conn	1	
43	326.9		Mat. Chngs back to VCP	1	
44	329.4		Crack-Radial	3	
45	332.0		Crack-Radial	3	
46	334.4	Invert	Crack-Radial	5	
47	338.4	5445-271	DS Manhole	1	