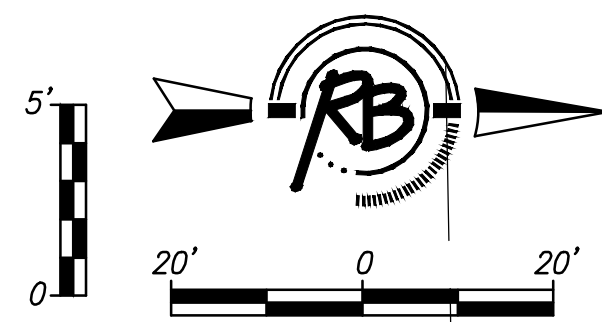


Note: Deleted MH1 and moved Line 1 west.

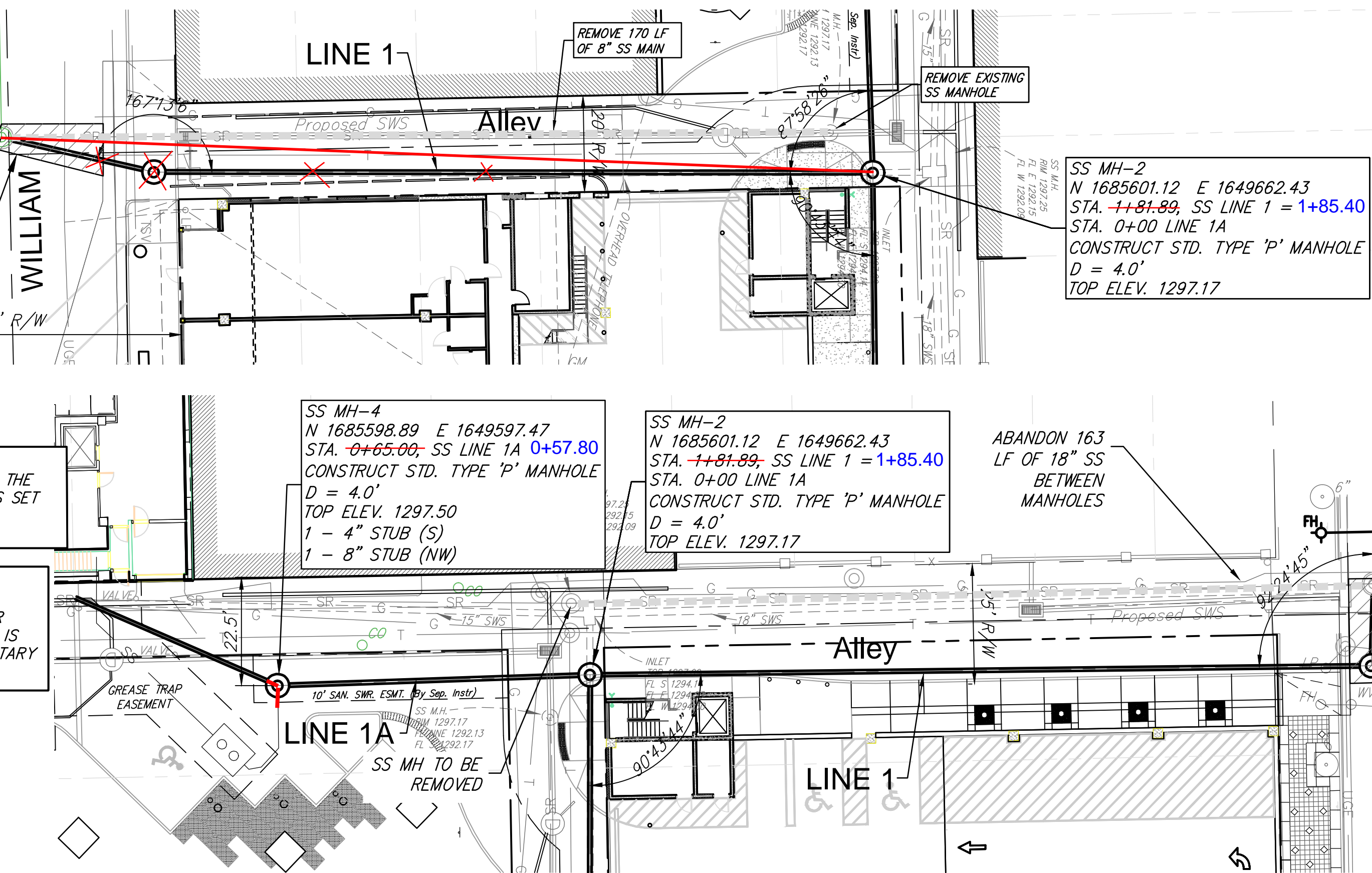


N 1685420.04 E 1649655.07
STA. 0+00.00 SS LINE 1
CONNECT TO EXISTING MANHOLE
REMOVE AND RESHAPE INVERT.

REMOVE 20 S.Y. A.C. PAVEMENT
AND PLACE TEMPORARY PATCH

NOTE:
LINE 1A SHALL BE BID AND BUILT AS PART OF THE
URBAN PARK PROJECT. LINE IS SHOWN IN THIS SET
FOR INFORMATION ONLY. CONTRACTOR SHALL
COORDINATE BETWEEN PROJECTS.

NOTE:
CONTRACTOR SHALL INCLUDE PROVISION TO
TEMPORARILY PUMP SEWAGE IF SANITARY SEWER
LINE TO BE CONSTRUCTED WITH PARK PROJECT IS
NOT IN PLACE WHEN PARKING STRUCTURE SANITARY
SEWER IS CONSTRUCTED.



Existing Sanitary Sewer to be Abandoned in
place per City of Wichita Specifications where
not in conflict with construction of proposed
Storm Sewer or Sanitary Sewer.

Contractor shall pump or haul Sanitary Sewer
during construction.

NOTE:
LINE 1A SHALL BE BID AND BUILT AS PART OF THE
URBAN PARK PROJECT. LINE 1 IS TO BE BUILT AS
PART OF THE PARKING STRUCTURE PROJECT AND IS
SHOWN IN THIS SET FOR INFORMATION ONLY.
CONTRACTOR SHALL COORDINATE BETWEEN PROJECTS.

NOTE:
CONTRACTOR SHALL INCLUDE PROVISION TO
TEMPORARILY PUMP SEWAGE IF SANITARY SEWER
LINE TO BE CONSTRUCTED WITH PARK PROJECT IS
NOT IN PLACE WHEN PARKING STRUCTURE SANITARY
SEWER IS CONSTRUCTED.

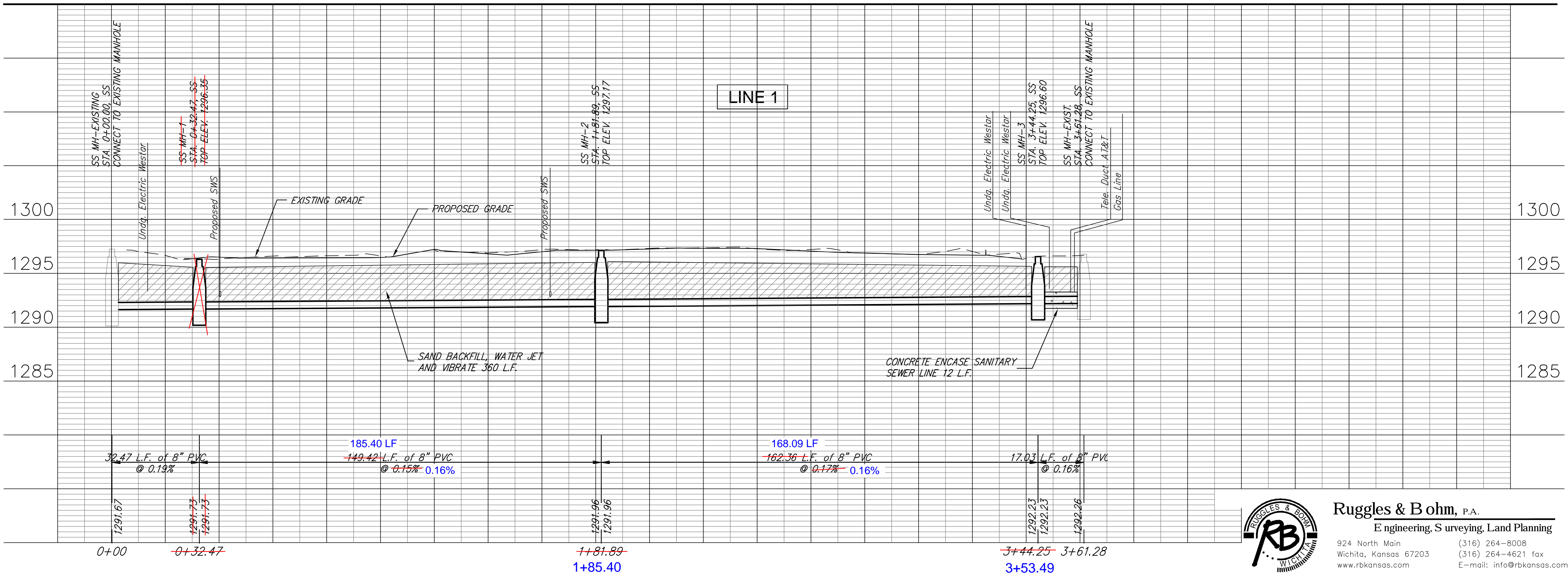
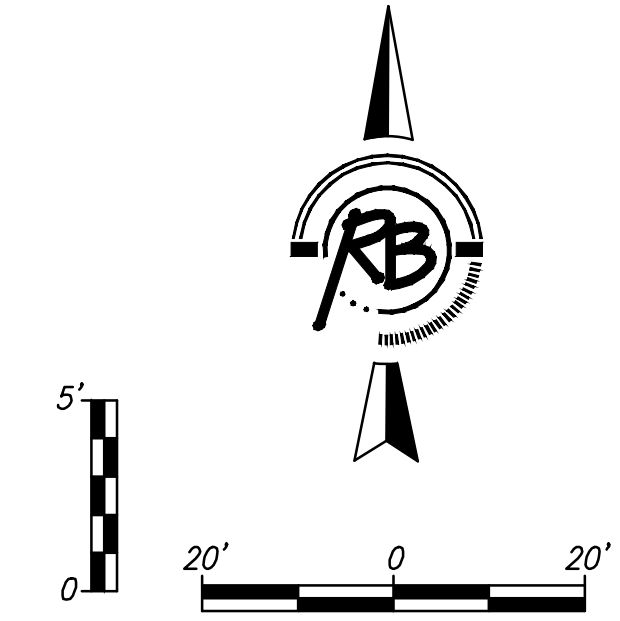
BENCHMARKS

BENCHMARK #1: CHISELED SQUARE ON THE
TOP OF CURB ON THE SOUTH SIDE OF ALLEY
ON WEST SIDE OF TOPEKA, 1/2 BLOCK
BETWEEN DOUGLAS AND WILLIAM
ELEVATION = 1297.01 (NAVD88)

BENCHMARK #2: CHISELED SQUARE ON TOP
OF CURB ON THE WEST CURB RETURN AT
THE SOUTHWEST CORNER OF TOPEKA AND
WILLIAM
ELEVATION = 1296.32 (NAVD88)

TOPEKA

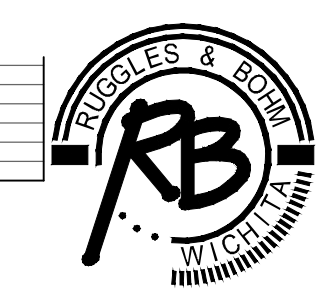
TOPEKA



DOUGLAS BLOCK PARKING STRUCTURE

PRINTS ISSUED
09.02.11 - PRICING SET
10.28.11 - FOR BID

WDM No. drawn: BDT
checked: KWL/BC
SWS P&P



Ruggles & Bohm, P.A.
Engineering, Surveying, Land Planning
924 North Main
Wichita, Kansas 67203
www.rbkansas.com
(316) 264-8008
(316) 264-4621 fax
E-mail: info@rbkansas.com

C3.1