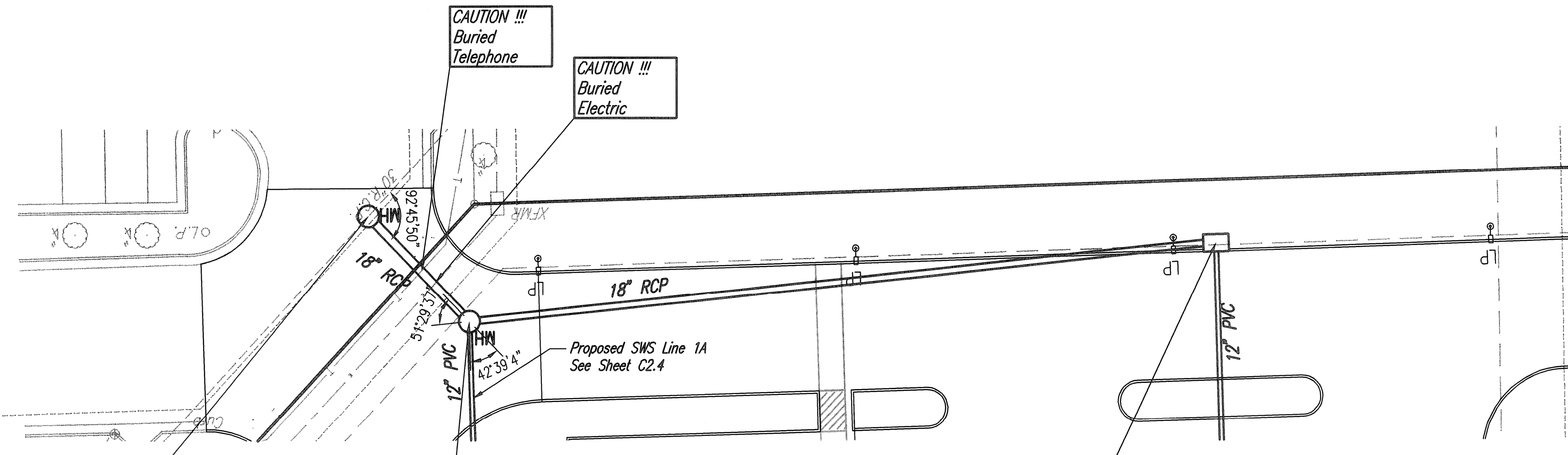




**MANHOLE CONNECTION:**  
 PRIOR TO CONSTRUCTION CONTRACTOR SHALL VERIFY HORIZONTAL AND VERTICAL LOCATION AND SIZE OF EXISTING 30" RCP AND REPORT THESE FINDINGS TO THE ENGINEER SO THAT ANY NECESSARY ADJUSTMENTS CAN BE MADE. CUT EXISTING 30" RCP AND INSTALL NEW MANHOLE, CONNECT EXISTING RCP TO MANHOLE. GROUT IN PLACE WITH NON-SHRINK GROUT.



COORDINATE LIST		
POINT	NORTH	EAST
7000	19,643.6512	20,385.7374
7001	19,667.9044	20,361.9853
7002	19,650.0482	20,186.9491

7000 = COORDINATE POINT NO.

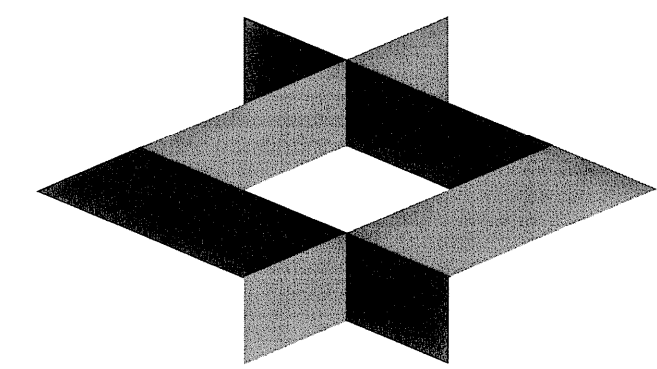
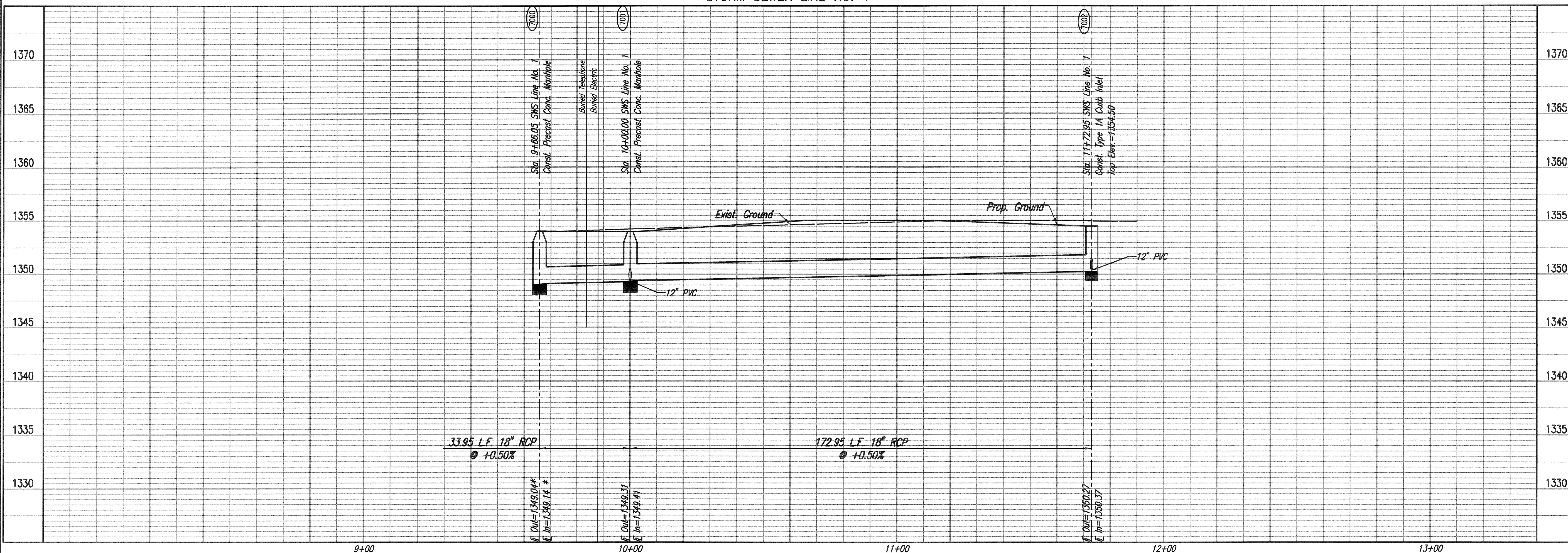
7000  
 Sta. 9+66.05 SWS Line No. 1 \*  
 Exist. 30" RCP  
 Const. Precast Concrete Manhole  
 Dia.=5'-0"  
 Top Elev.=1354.04  
 Install 33.95 L.F. 18" RCP (W)  
 See Sheet No. C2.7.  
 See Manhole Connection Note,  
 This Sheet.

7001  
 Sta. 10+00.00 SWS Line No. 1  
 Const. Precast Concrete Manhole  
 Dia.=5'-0"  
 Top Elev.=1354.00  
 Install 172.95 L.F. 18" RCP (W)  
 Install 244.41 L.F. 12" PVC (N)  
 See Sheet No. C2.7.

7002  
 Sta. 11+72.95 SWS Line No. 1  
 Const. Std. Type 1A Curb Inlet  
 L=6'-0", W=4'-0"  
 Top Elev.=1354.50  
 Install 246.50 L.F. 12" PVC (N)  
 See Sheet No. C2.5  
 Match Point. For continuation see sheet C2.3.

\* PRIOR TO BEGINNING CONSTRUCTION, THE CONTRACTOR SHALL EXCAVATE THE EXISTING 30" RCP PIPE AT STATION 9+66.05 TO VERIFY ITS HORIZONTAL AND VERTICAL LOCATION. THE PIPE LOCATION SHALL BE REPORTED TO THE ENGINEER SO THAT ANY NECESSARY PLAN MODIFICATIONS CAN BE MADE. ANY ADDITIONAL LABOR OR MATERIALS NECESSARY TO COMPLETE THE CONNECTION SHALL BE CONSIDERED SUBSIDIARY TO THE PROJECT.

STORM SEWER LINE NO. 1



**GLMV Architecture**

1525 E. Douglas, Wichita, KS 67211  
 Tel: (316) 265-9367

www.glmv.com



© 2012 GLMV Architecture, Inc.  
 All work herein is the exclusive property of GLMV Architecture, Inc. and is not to be copied or used in any way without the express written consent of GLMV Architecture, Inc. All drawings, specifications, notes, designs and arrangements appearing herein constitute the original and unpublished work of GLMV Architecture, Inc.

GLMV Architecture, Inc.

**KWIK SHOP #790**  
**CONVENIENCE STORE**  
**37TH & MAIZE**  
**WICHITA, KANSAS**

Mark	Date	Revision / Description
1	02/14/13	Revision 1

**SWS PLAN & PROFILE**

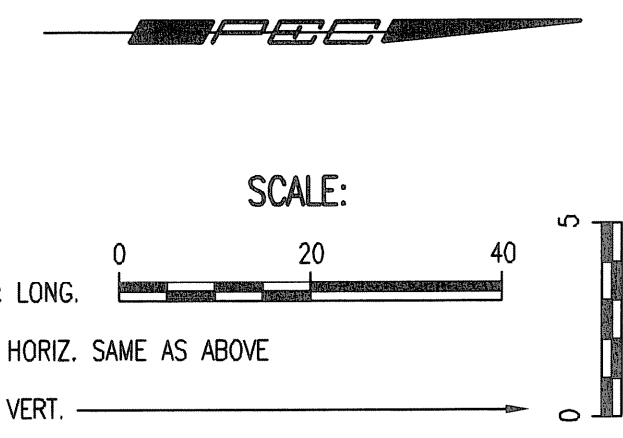
Job No.	12329	<b>C2.2</b>
Date	1/03/13	
Drawn	CAE	Dwg. 11 of 24
Checked	IDK	



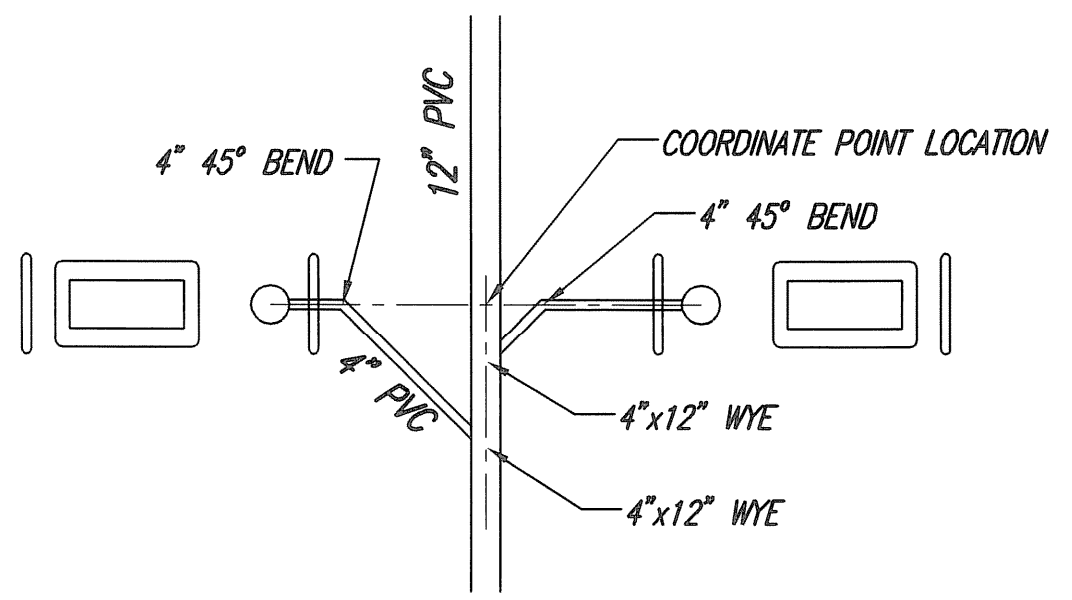
PROFESSIONAL ENGINEERING CONSULTANTS, P.A.  
 303 SOUTH TOPEKA WICHITA, KS 67202  
 316-262-2691 www.pec1.com

Saved: 02-14-2013 12:54:54 AM by: PEI  
 C:\2013\12329\Site Plans\011\_12329-C2.2\_SWS PLAN-PROFILE

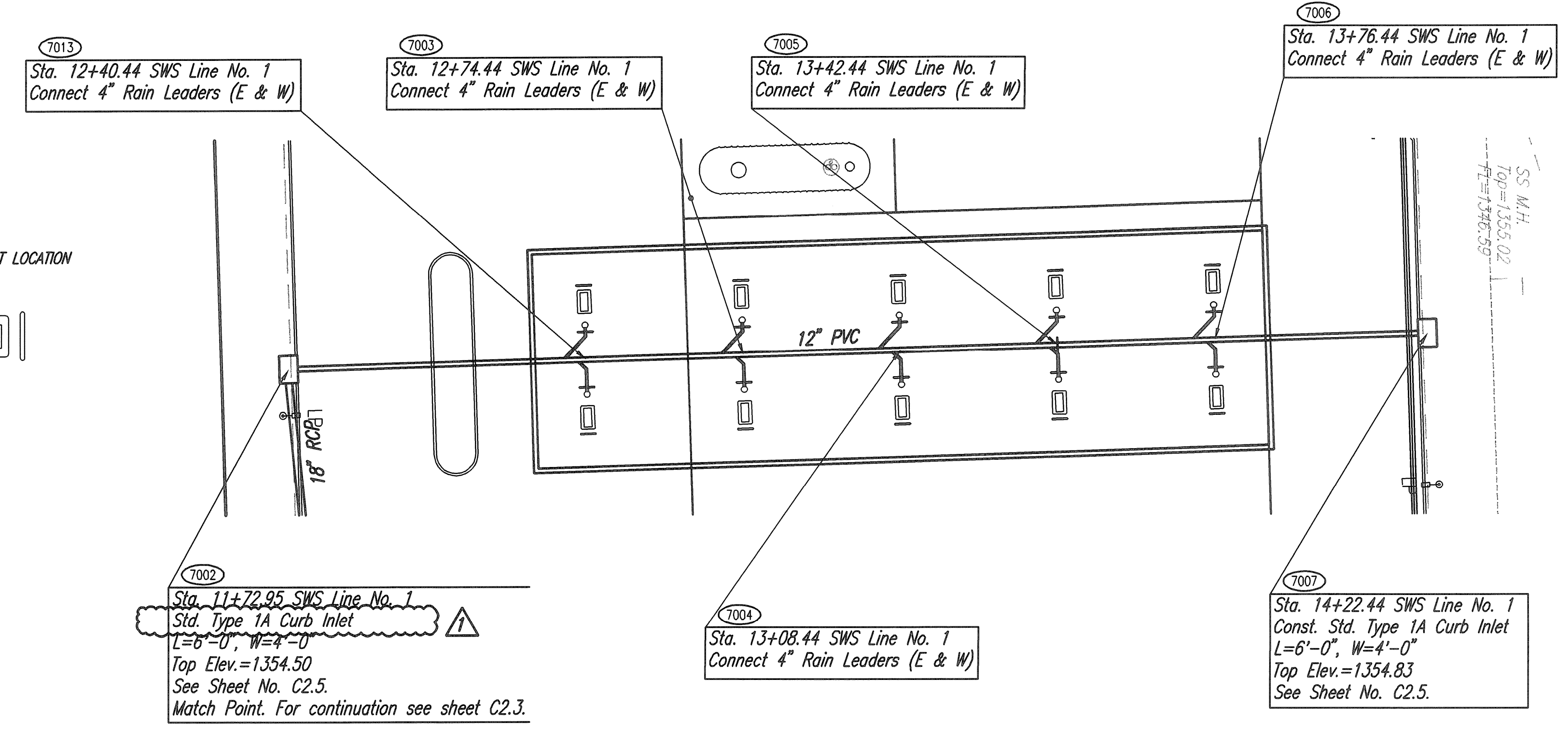
1 2 3 4 5



SCALE:  
 PLAN: LAT. & LONG. 0 20 40  
 PROFILE: HORIZ. SAME AS ABOVE  
 VERT. 0 5



CANOPY RAIN LEADER DETAIL  
 NOT TO SCALE



COORDINATE LIST		
POINT	NORTH	EAST
7002	19,650.0482	20,186.9491
7003	19,748.5022	20,183.9396
7004	19,782.4863	20,182.9008
7005	19,816.4705	20,181.8620
7006	19,850.4546	20,180.8232
7007	19,896.4331	20,179.4178
7013	19,714.5181	20,184.9784

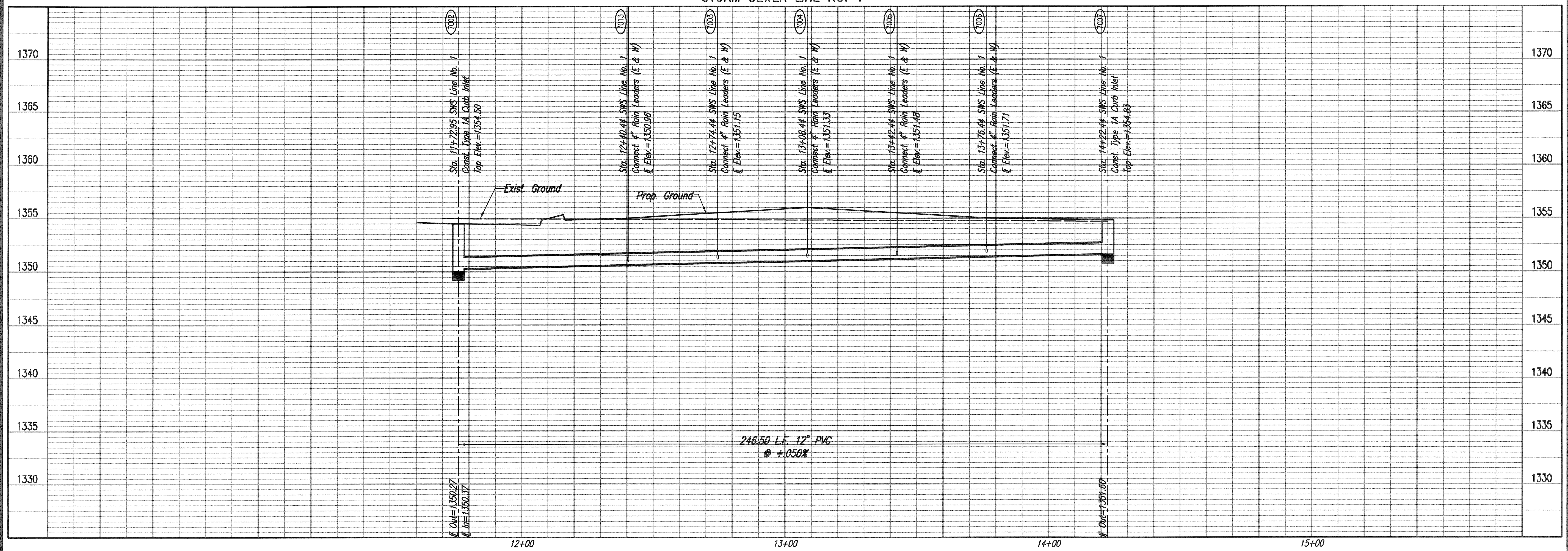
7000 = COORDINATE POINT NO.

7002  
 Sta. 11+72.95 SWS Line No. 1  
 Std. Type 1A Curb Inlet  
 L=6'-0", W=4'-0"  
 Top Elev.=1354.50  
 See Sheet No. C2.5  
 Match Point. For continuation see sheet C2.3.

7004  
 Sta. 13+08.44 SWS Line No. 1  
 Connect 4" Rain Leaders (E & W)

7007  
 Sta. 14+22.44 SWS Line No. 1  
 Const. Std. Type 1A Curb Inlet  
 L=6'-0", W=4'-0"  
 Top Elev.=1354.83  
 See Sheet No. C2.5.

STORM SEWER LINE NO. 1



7002  
 Sta. 11+72.95 SWS Line No. 1  
 Const. Type 1A Curb Inlet  
 Top Elev.=1354.50

7003  
 Sta. 12+40.44 SWS Line No. 1  
 Connect 4" Rain Leaders (E & W)  
 Top Elev.=1350.96

7003  
 Sta. 12+74.44 SWS Line No. 1  
 Connect 4" Rain Leaders (E & W)  
 Top Elev.=1351.75

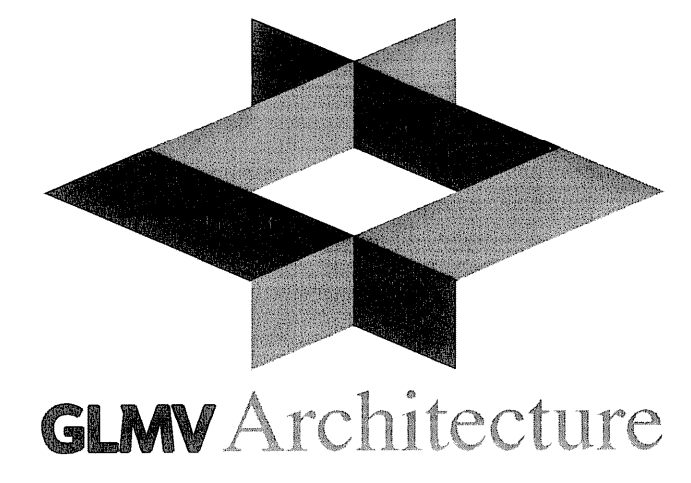
7004  
 Sta. 13+08.44 SWS Line No. 1  
 Connect 4" Rain Leaders (E & W)  
 Top Elev.=1351.33

7005  
 Sta. 13+42.44 SWS Line No. 1  
 Connect 4" Rain Leaders (E & W)  
 Top Elev.=1351.46

7006  
 Sta. 13+76.44 SWS Line No. 1  
 Connect 4" Rain Leaders (E & W)  
 Top Elev.=1351.71

7007  
 Sta. 14+22.44 SWS Line No. 1  
 Const. Type 1A Curb Inlet  
 Top Elev.=1354.83

246.50 L.F. 12" PVC  
 @ 0.50%



1525 E. Douglas, Wichita, KS 67211  
 Tel: (316) 265-9367  
 www.glmv.com



© 2012 GLMV Architecture, Inc.  
 All work herein is the exclusive property of GLMV Architecture, Inc. and is not to be copied or used in any way without the express written consent of GLMV Architecture, Inc. All drawings, specifications, ideas, designs and arrangements appearing herein constitute the original and unpublished work of:

GLMV Architecture, Inc.

**KWIK SHOP #790**  
**CONVENIENCE STORE**  
**37TH & MAIZE**  
**WICHITA, KANSAS**

1	02/14/13	Revision 1
Mark	Date:	Description

SWS PLAN & PROFILE

Job No. 12329  
 Date 1/03/13  
 Drawn CAE  
 Checked IDK

**C2.3**

Dwg. 12 of 24



Saved 02-14-2013 7:24:38 AM by REJ  
 Plot Scale: 0.2 = 1'-0" 02-14-2013 7:27:00 AM by RCB E. JOHNSON  
 C:\2012\12329 Site Plans\02\_C2.3 SWS PLAN-PROFILE

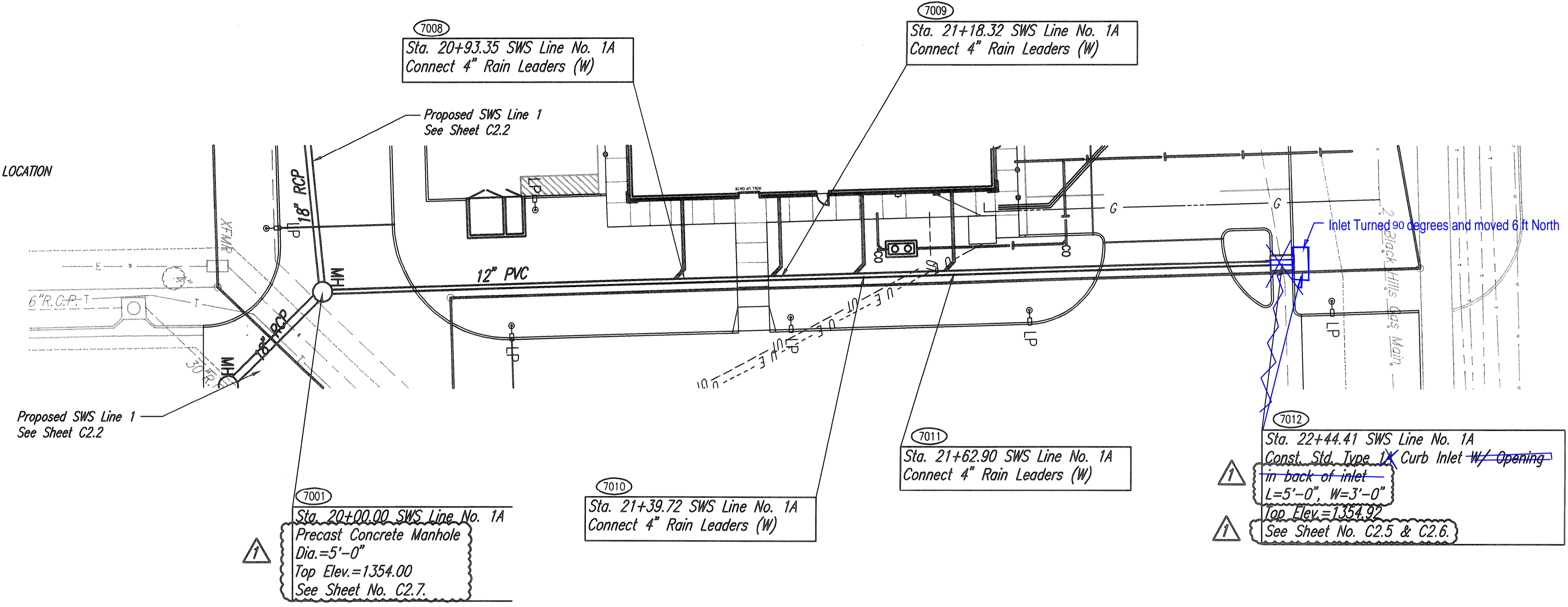
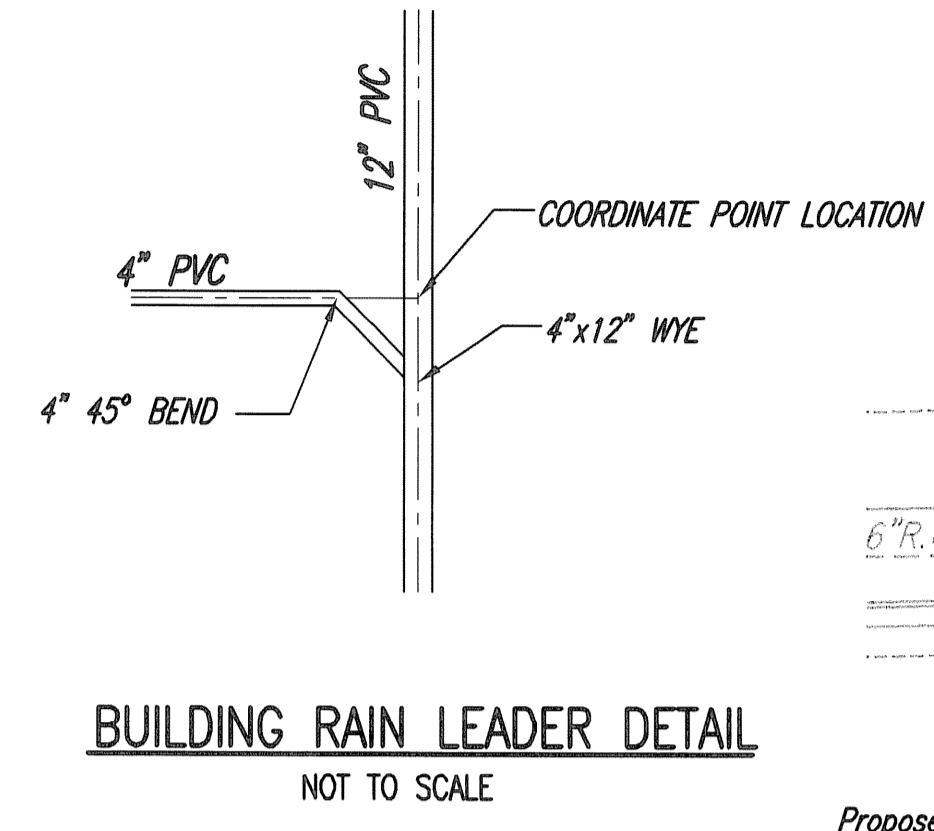
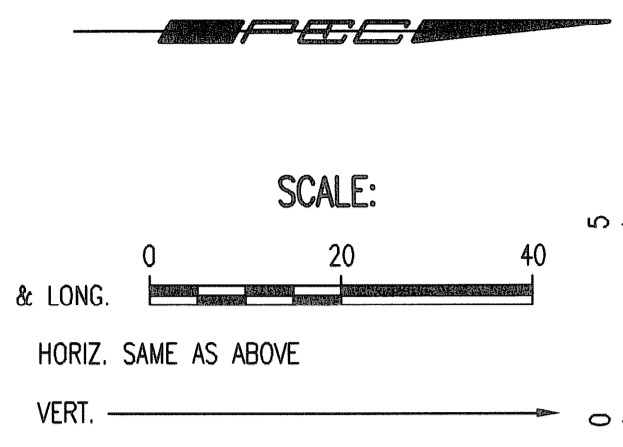
1

2

3

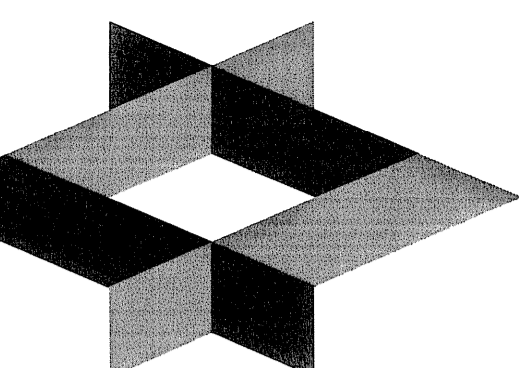
4

5



POINT	NORTH	EAST
7001	19,667.9044	20,361.9853
7008	19,761.2181	20,359.1329
7009	19,786.1804	20,358.3699
7010	19,807.5610	20,357.7163
7011	19,830.7325	20,357.0080
7012	19,915.2889	20,354.4234

7000 = COORDINATE POINT NO.

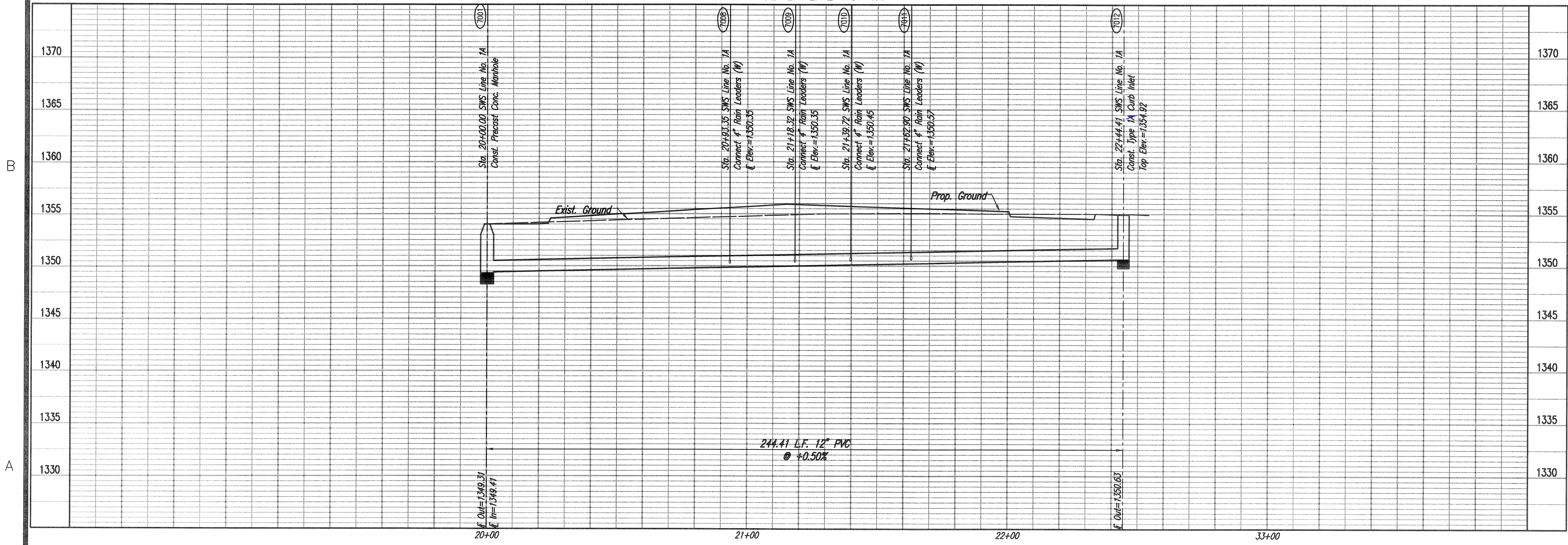


**GLMV Architecture**  
 1525 E. Douglas, Wichita, KS 67211  
 Tel: (316) 265-9367  
 www.glmv.com



© 2012 GLMV Architecture, Inc.  
 All work herein is the exclusive property of GLMV Architecture, Inc. and is not to be copied or used in any way without the express written consent of GLMV Architecture, Inc. All drawings, specifications, ideas, designs and arrangements appearing herein constitute the original and unpublished Work of GLMV Architecture, Inc.

STORM SEWER LINE NO. 1A



**KWIK SHOP #790**  
**CONVENIENCE STORE**  
**37TH & MAIZE**  
**WICHITA, KANSAS**

Mark	Date	Revision	Description
1	02/14/13	Revision 1	

**SWS PLAN & PROFILE**

Job No.	12329	<b>C2.4</b>
Date	1/03/13	
Drawn	CAE	
Checked	IDK	

Dwg. 13 of 24



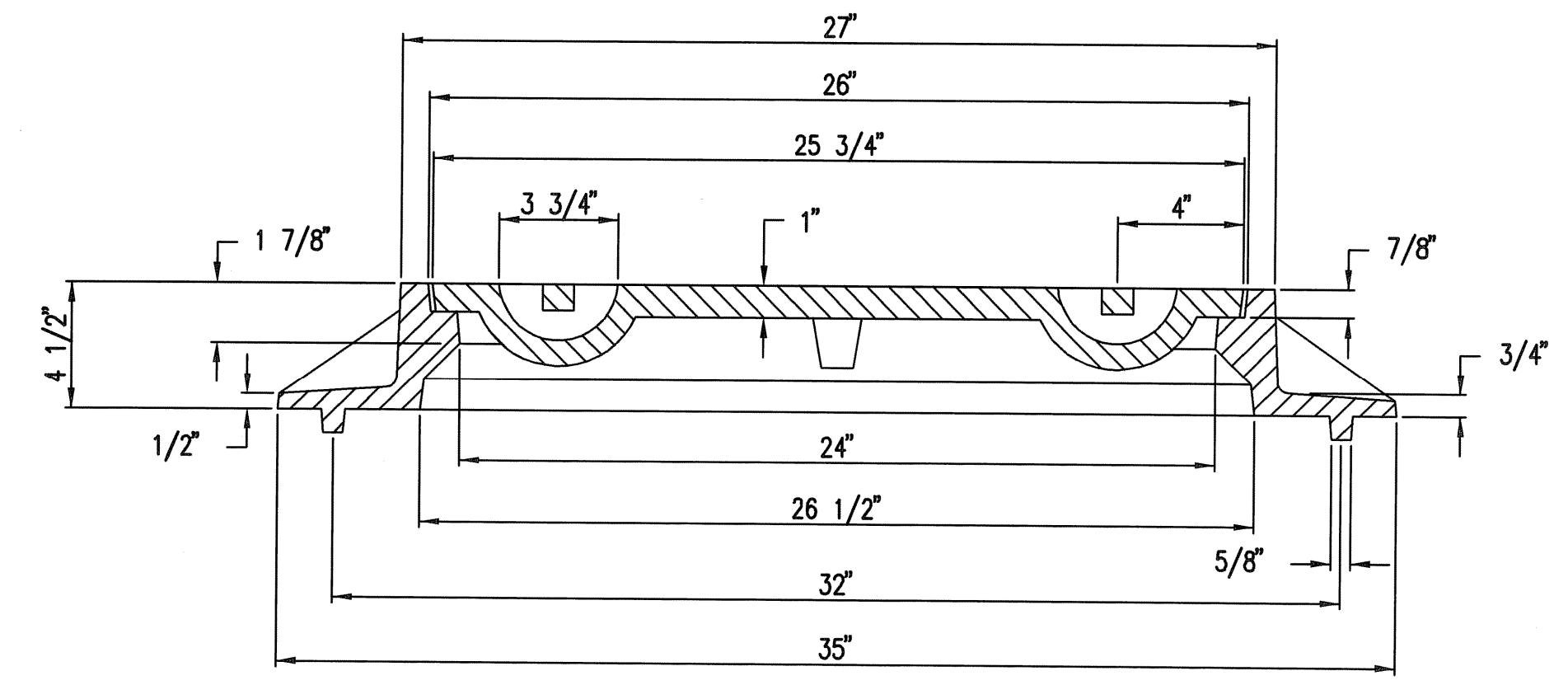
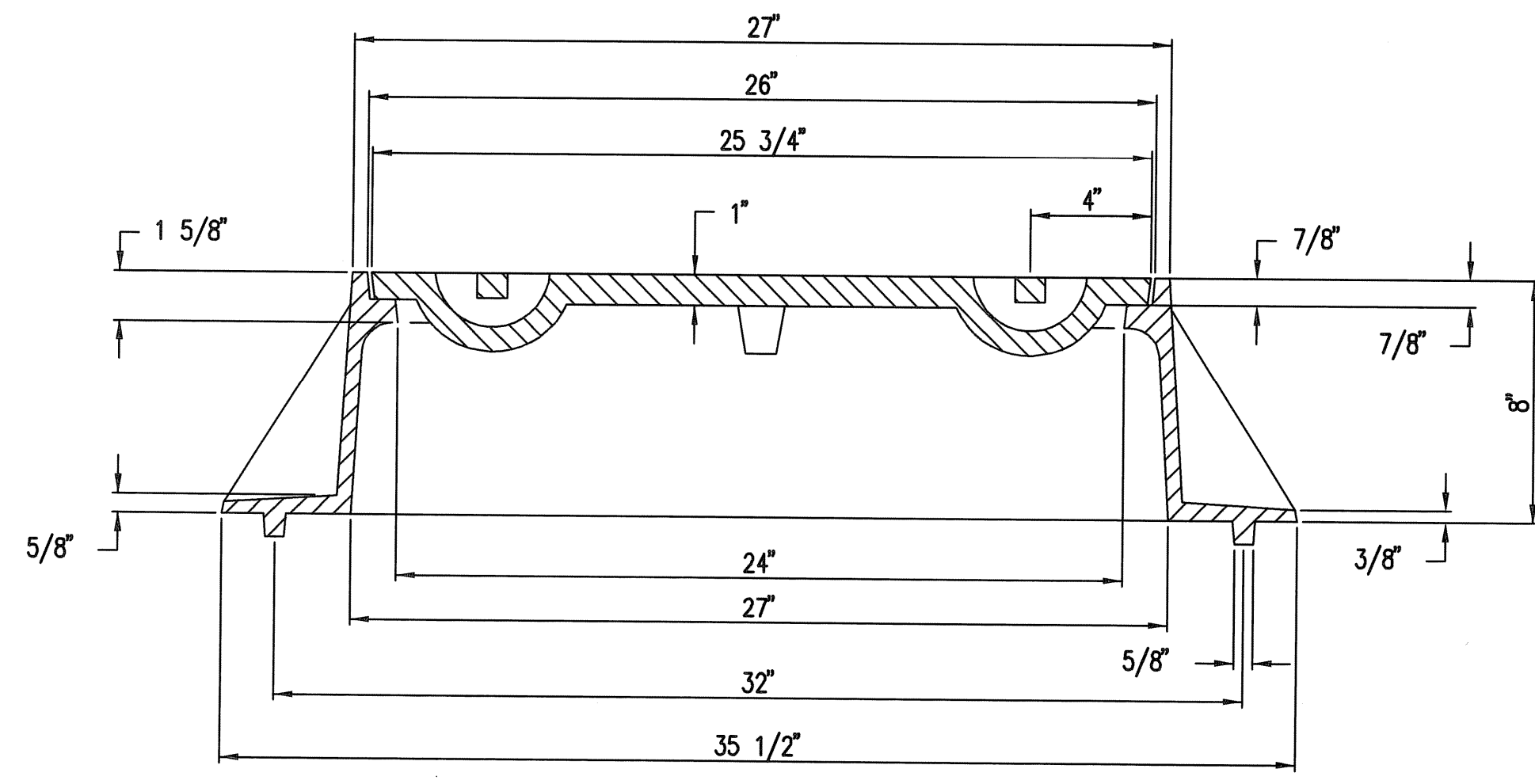
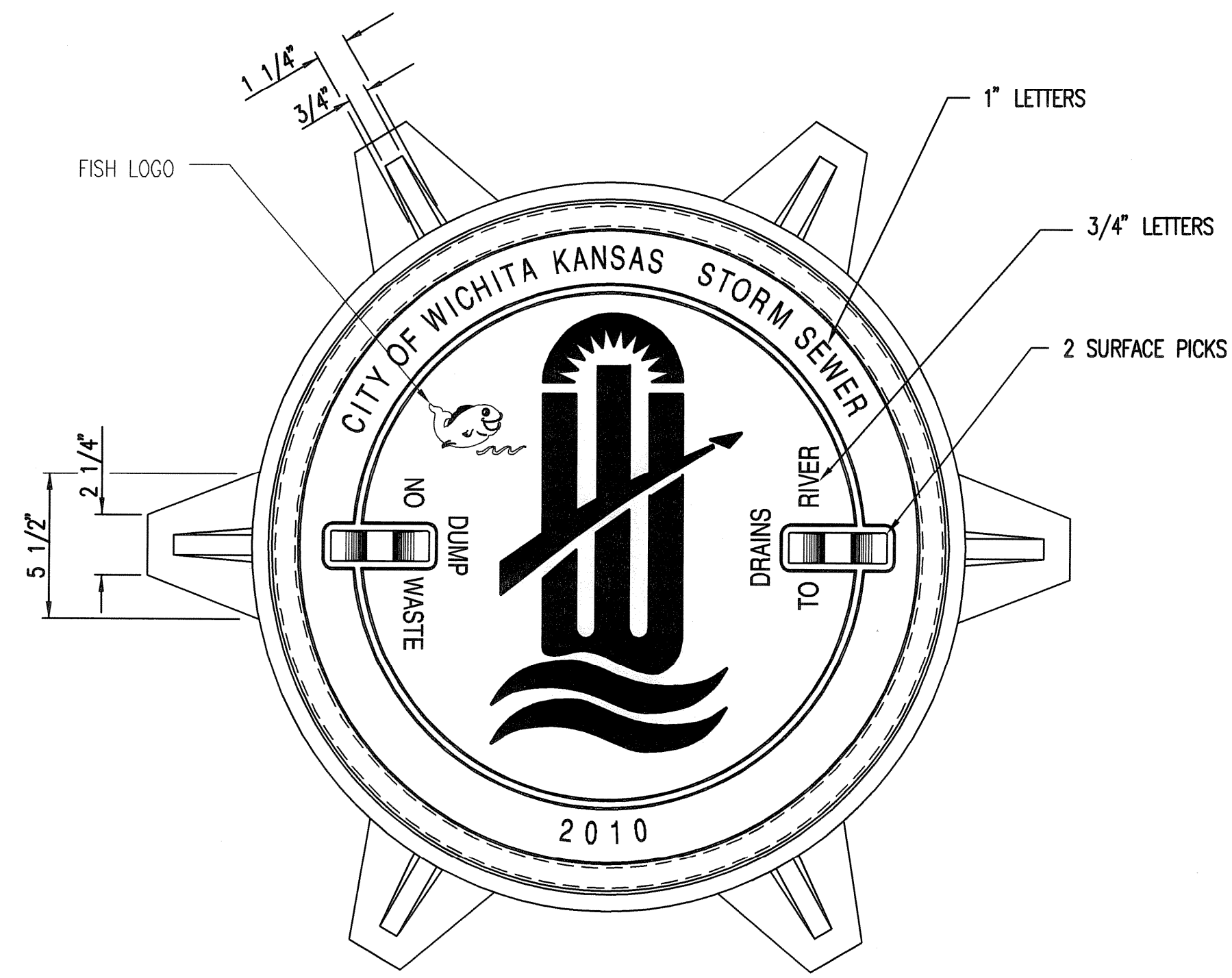
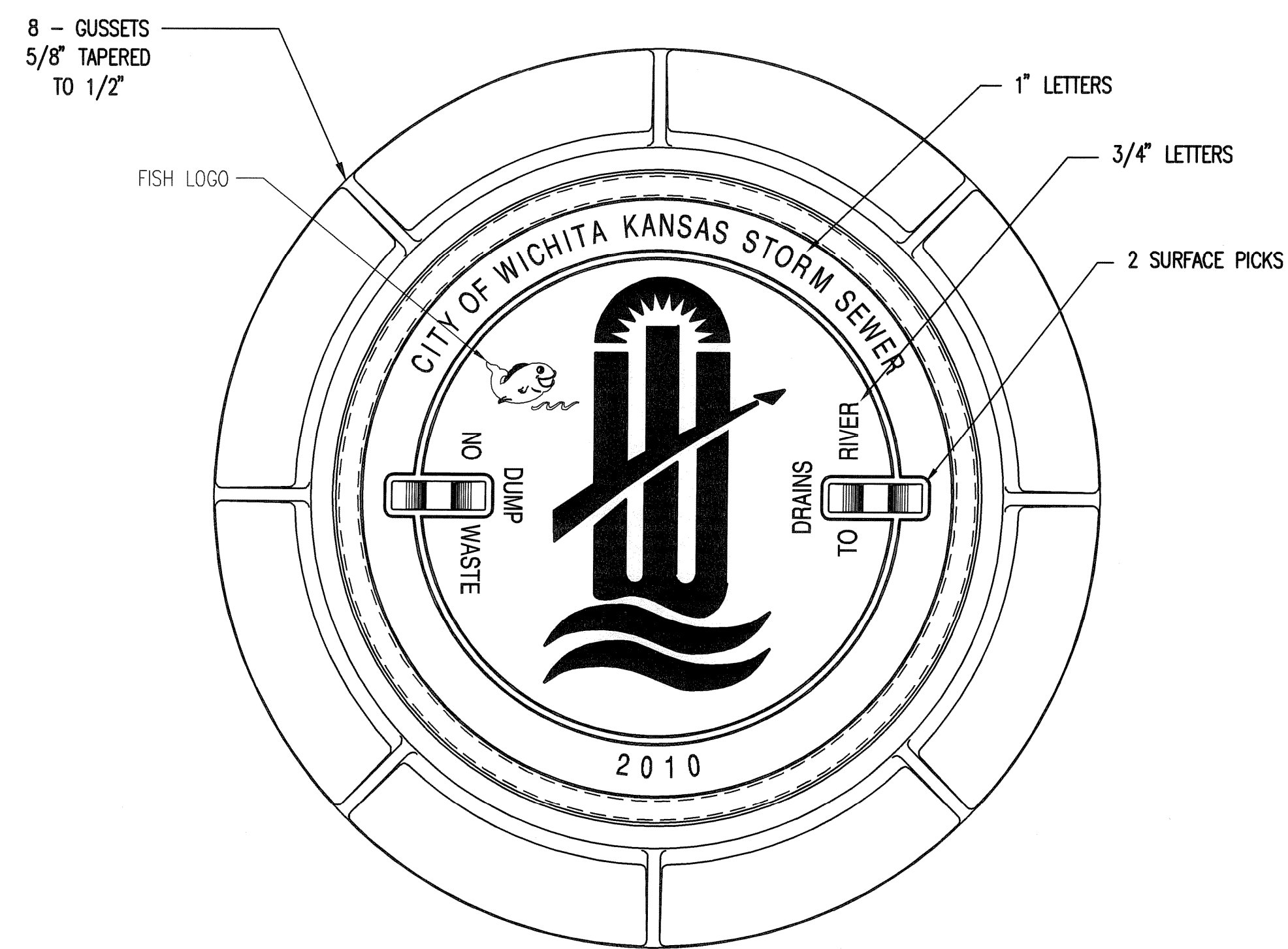
Sheet 02-14-2013 7:26:03 AM by: PEI  
 Plot Scale: 1" = 40' 1/2" = 20' 1/4" = 10'  
 01/20/13 12:29:00 Site Plans\013\_12329-C2.4\_SWS PLAN-PROFILE







D  
C  
B  
A



**MANHOLE FRAME**  
DEETER #1261 OR EJIW #1936-Z1

- NOTE:
1. FURNISHED WITH MACHINED HORIZONTAL BEARING SURFACE.
  2. COVER TO BE DEETER #1261 OR EJIW #1936A.

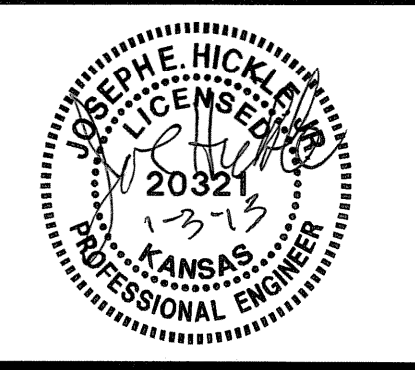
**INLET FRAME**  
DEETER #2014 OR EJIW #1936-Z4

- NOTE:
1. FURNISHED WITH MACHINED HORIZONTAL BEARING SURFACES.
  2. NOT TO BE USED UNDER PAVEMENT.
  3. COVER TO BE DEETER #1261 OR EJIW #1936A.

DETAIL SOURCE: CITY OF WICHITA STANDARD MANHOLE/INLET FRAME AND COVER (STORM SEWER) NOV. 2010 (SW-303)



1525 E. Douglas, Wichita, KS 67211  
Tel: (316) 265-9367  
www.glmv.com



© 2012 GLMV Architecture, Inc.  
All work herein is the exclusive property of GLMV Architecture, Inc. and is not to be copied or used in any way without the express written consent of GLMV Architecture, Inc. All drawings, specifications, ideas, designs and arrangements appearing herein constitute the original and unpublished Work of:  
GLMV Architecture, Inc.

**KWIK SHOP #790**  
**CONVENIENCE STORE**  
**37TH & MAIZE**  
**MAIZE, KANSAS**

Mark	Date	Description

**MANHOLE INLET FRAME & COVER (STORM SEWER)**

Job No.	12329	<b>C2.8</b>
Date	1/03/13	
Drawn	CAE	
Checked	IDK	
Dwg.	17 of 23	

Saved: 12-21-2012 11:01:21 AM by CAE  
 Plot Scale: 1:1 01-03-2013 5:53:53 PM by CHRIS A. LEEP  
 G:\2012\1226\Site Plans\07\_12329-C2.8 MANHOLE INLET FRAME DETAIL









