

# GENERAL NOTES:

1. Contractor will be required to provide notice to utility companies a minimum of seventy-two (72) hours prior to any excavation, as follows:

Kansas One-Call 687-2470

The Contractor must notify the following in case of an emergency:

Cox Communications 262-4270  
 Kansas Gas Service 1-888-482-4950  
 Westar Energy 383-8650  
 Black Hills Energy 1-800-303-0357  
 AT&T 268-2245  
 City of Wichita Water Dept. 268-4563  
 City of Wichita Sewer Maint. 268-4024  
 City of Wichita Storm Sewer Maint. 268-4090  
 City of Wichita Traffic Maint. 268-4034  
 Conoco Phillips Pipeline Co. 1-877-267-2290  
 Southern Star Pipeline Co. 529-6600  
 Kinder-Morgan Pipeline Co. 1-888-844-5658

2. Utility service lines, poles, valve boxes, meters, and etcetera are to be adjusted as necessary by others prior to construction unless the plans specifically call for their adjustment by the Contractor or unless the plans specifically identify a utility to be adjusted by its owner during construction. Existing utilities and their location, as shown on the plans, represent the best information obtainable for design. The Contractor will be required to work around existing utilities within the right-of-way which do not conflict with proposed construction.

3. Rubble from the removal of miscellaneous structures and excess excavation which is to be wasted shall be disposed of on sites to be provided by the Contractor. These sites shall be approved by the Engineer as to suitability, appearance and site location. Locations, in the opinion of the Engineer, that will leave an unsightly appearance will not be approved. All disposal sites must be approved by the Kansas Department of Health and Environment. Material either stockpiled or disposed of in a flood plain would require a Kansas State Board of Agriculture permit. Any material dumped in waters of the United States or wetlands is subject to U.S. Corps. of Engineers permitting regulations. Any material buried or stockpiled beyond approved construction limits would require additional archaeological investigations unless buried in a previously approved borrow location.

4. Trees and shrubs in public right-of-way which are in direct conflict with proposed new construction shall be removed by the Contractor with the Engineer's approval. Trees and shrubs which are not in direct conflict with proposed new construction shall be saved and protected from damage.

5. The Contractor shall give all property owners and/or tenants of developed property abutting the construction of this project a minimum of ten (10) days notice prior to start of construction.

6. The Contractor shall be responsible for preserving property irons. The Contractor will be required to re-establish any property irons which are damaged or destroyed by his construction operations. Such irons shall be re-established by a licensed land surveyor in accordance with state laws.

7. All existing and proposed erosion control measures including silt fencing, erosion control mat, straw bales, inlet barriers, and const. entrance shall be maintained throughout construction by the contractor and until project is accepted by the City of Wichita. The on-site engineer shall complete weekly reports on the status of erosion control measures. The contractor shall be required to comply with maintenance and/or replacement of erosion control measures as determined by the on-site engineer until project is accepted by City of Wichita. Maintenance and/or replacement of erosion control measures to be paid by L.S. bid item "Maintain Existing BMPs".

8. The bid alternate for this project to "Export Excess Excavation" shall include hauling all excess excavation from the site. If the add alternate is not selected, all excess excavation shall remain on-site and be stockpiled or spread at a location determined by the Engineer.

9. All areas disturbed by construction shall be seeded as indicated on Pond Plan. All costs associated with seeding shall be included in bid item "Project Seeding". All seeding operations shall conform to City of Wichita Standard Specifications.

10. The developer for this project is Trent Banister, Vice-President, Hutton Development, LLC and may be reached at (316) 210-1861

# STORM WATER DRAIN #387 to serve FRONTGATE ADDITION

## CITY OF WICHITA, KANSAS

Gary Janzen, P.E. City Engineer

Project Number

468-84880

O.C.A. Number

751517

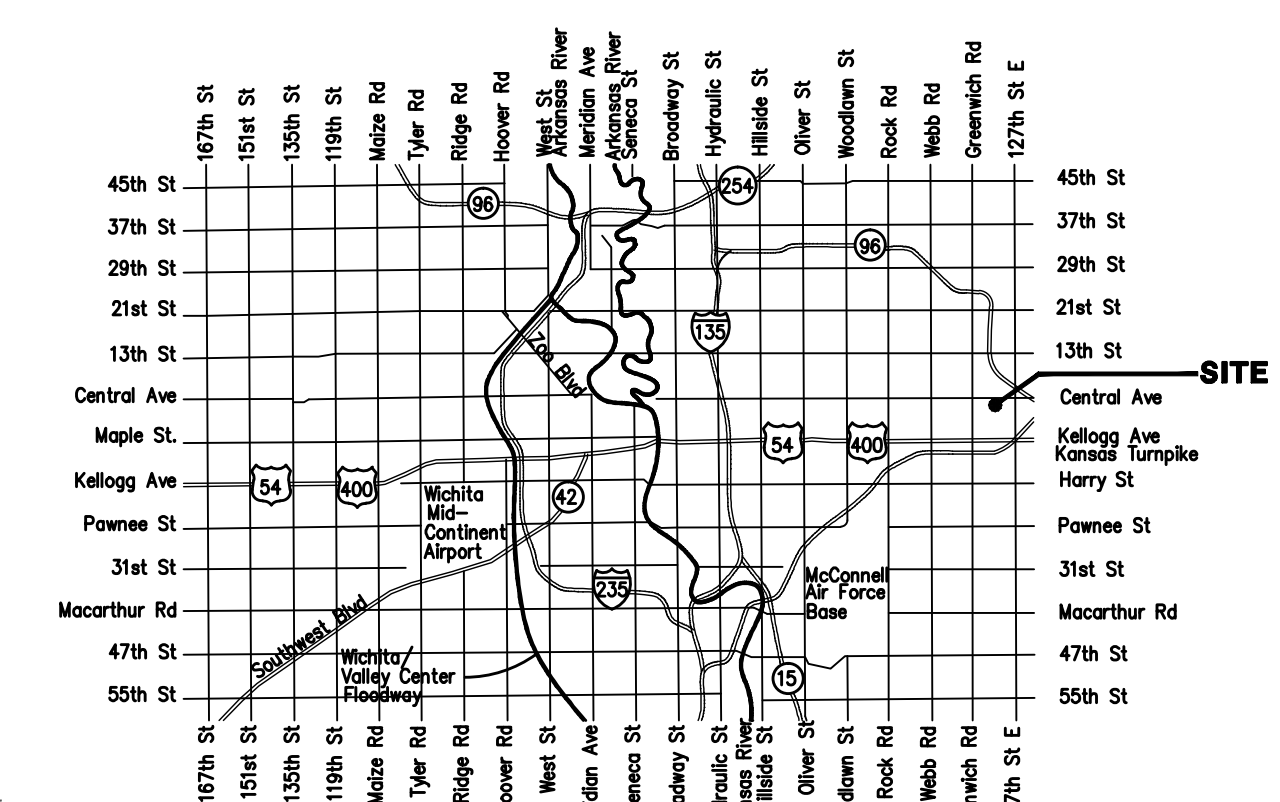
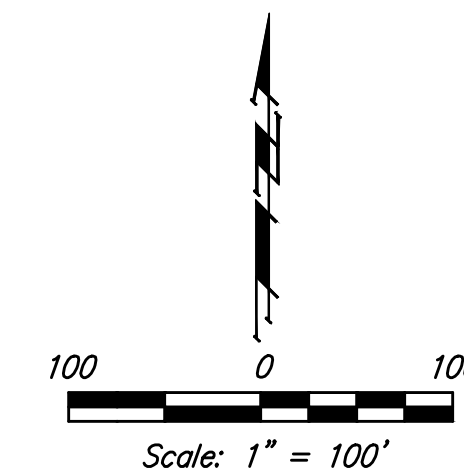
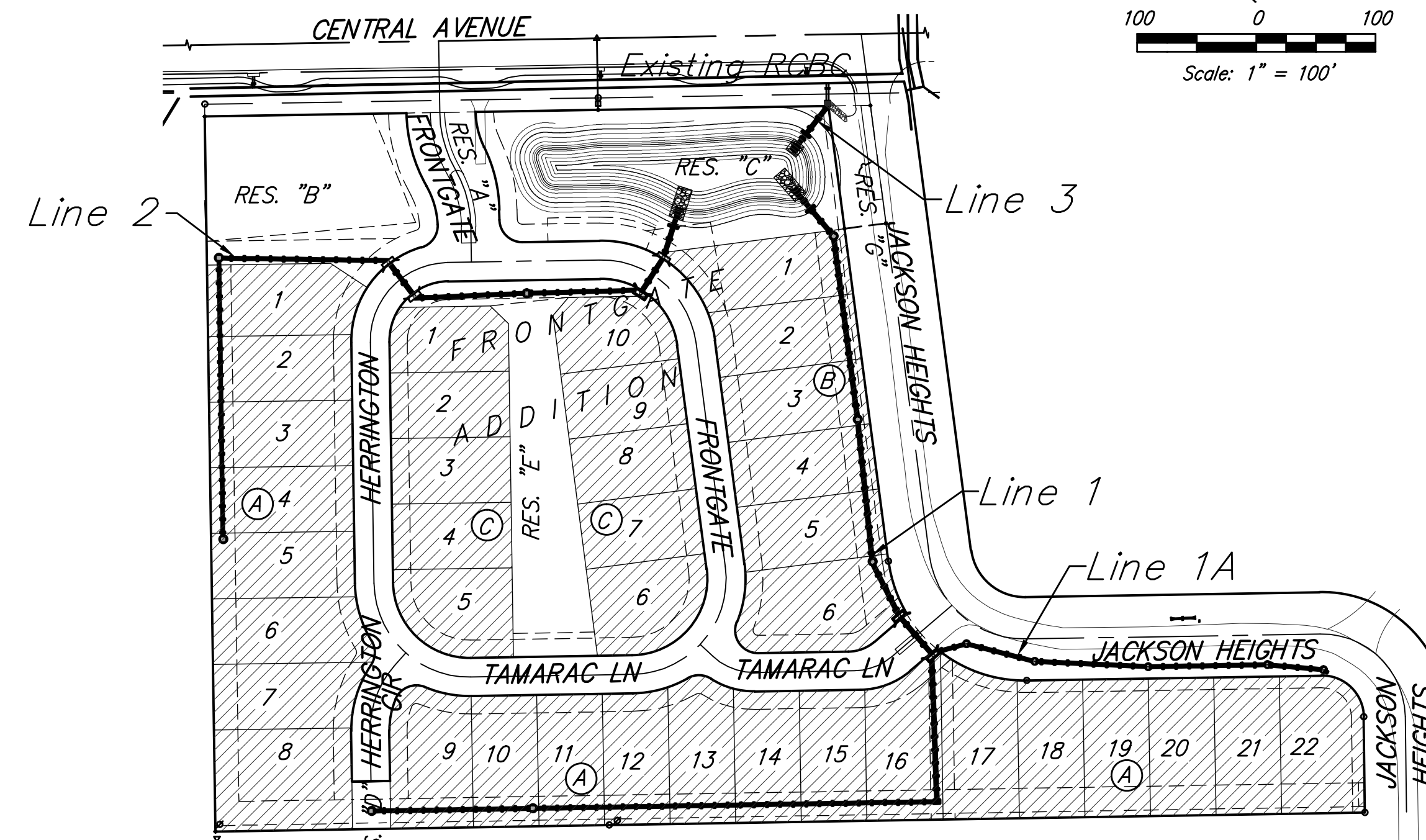
### Benchmarks

BM #1: CITY OF WICHITA DISC - WEST END OF CONCRETE HEADWALL OF REINFORCED CONCRETE BOX CULVERT, SOUTHEAST CORNER OF JACKSON HEIGHTS AND CENTRAL, 66.7' EAST & 11.6' NORTH OF THE NORTHEAST CORNER OF RESERVE "C", FRONTGATE ADDITION. ELEV. = 1349.46 NAVD88

BM #2: SQUARE CUT ON TOP OF REINFORCED CONCRETE BOX CULVERT, 19.2' WEST & 24.7' NORTH OF THE NORTHWEST CORNER OF RESERVE "B", FRONTGATE ADDITION. ELEV. = 1351.80 NAVD88

### Sheet Index

Title Sheet	1
Line 1	2-3
Line 1A	4
Line 2	5-6
Line 3	7
Std. Type 1A Double Inlet Detail	8
Special Yard Inlet Detail	9
Standard Drop Inlet Detail	10
Special Inlet Manhole Detail	11
Pavement Underdrain Detail	12
Pavement Underdrain Detail	13
Miscellaneous & Rip-rap Details	14
Mass Grading Details	15
Mass Grading Plan	16
Pond Plan	17
Pond Cross Sections	18
Erosion Control BMP Details	19-22
Coordinate Sheet	23
Copy of Plat	24



Benefit District

**Baughman**  
 Baughman Company, P.A. 315 Ellis St. Wichita, KS 67211 P 316-262-7271 F 316-262-0149  
 ENGINEERING | SURVEYING | PLANNING | LANDSCAPE ARCHITECTURE