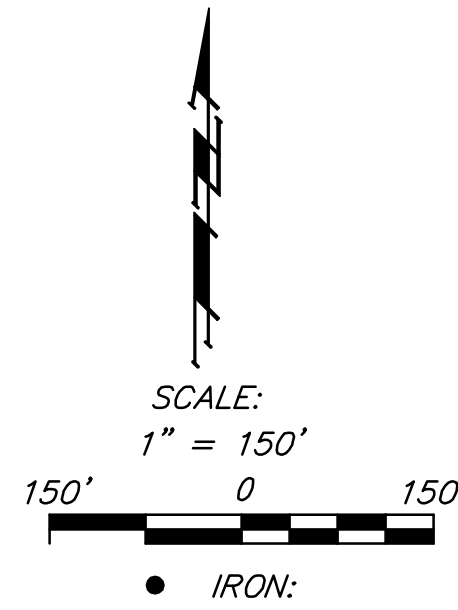


AS BUILT PLANS

Contractor: Mies
 Inspector: Don Eddingfield, Baughman Co.
 pdf's by: KEK, 6/25/13



STORM WATER SEWER TO SERVE Part of USD 259 North High School

EVEN LOTS 2 TO 102 ON ROCHESTER ST & ODD & EVEN LOTS 2 TO 103 ON SHERWOOD ST. EXC S 20 FT DED. FOR ST. SHERWOOD'S SUB & SHERWOOD'S SUB OF SHERWOOD'S ADDITION

Private Project: 0058 PPD (607861)

CITY OF WICHITA, KANSAS

James Armour, P.E. City Engineer

NOVEMBER 2011

Benchmarks

- Benchmarks:**
- #1 Square cut on the end of north end of the curb approximately 1.5' northeast of the west pole of the gate across Rochester Street just south of 14th Street.
Elevation=1307.93
 - #2 Square cut on the intersections of the sidewalks approximately 5' north of the northeast corner of the school building entrance and 32.5' south and 9' east of the southeast corner fence around the track.
Elevation=1309.96
 - #3 Square cut on the top of curb on the south side of the curb inlet at the west curb approximately 36' west and 13.5' south of the southwest corner of the fence for the canoe area.
Elevation=1307.11
 - #4 Square cut on the southeast corner of the concrete at the east side of the track where the bleachers are located.
Elevation=1308.36
 - #5 Square cut at the northeast corner of the sidewalk intersections on the west side of Rochester approximately 31' east and 17' south of the memorial plaque by the tree. And approximately 320' south of the centerline of 14th street.
Elevation=1307.81
- Elevations are NGVD 29

Legal Description

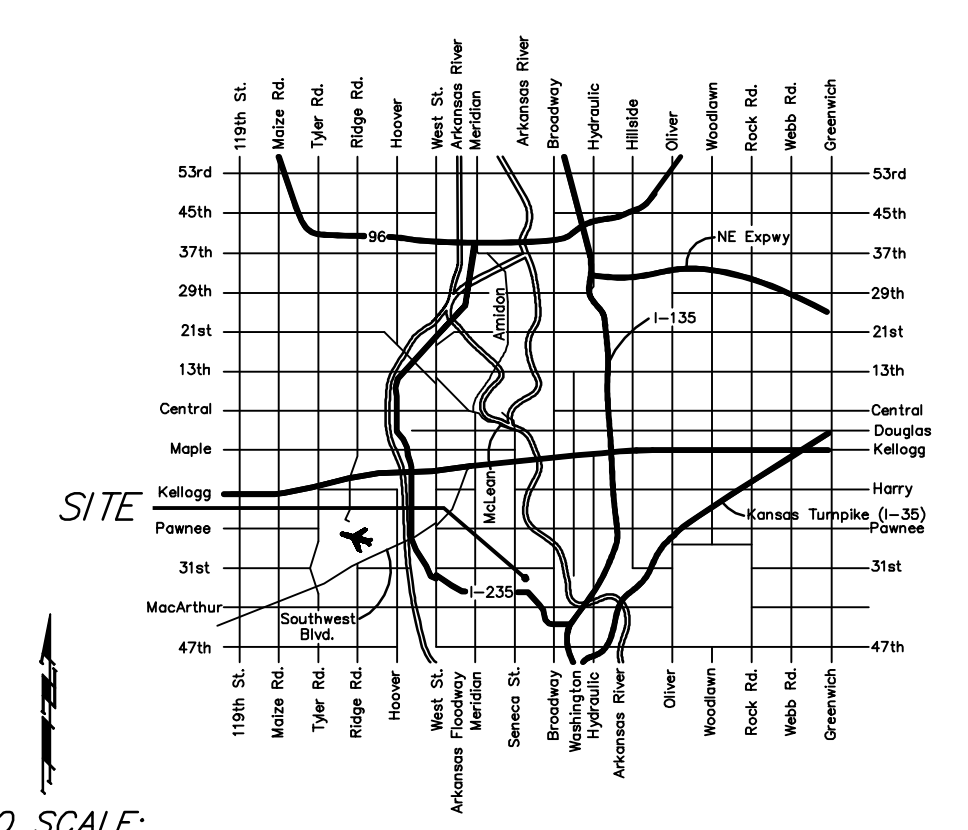
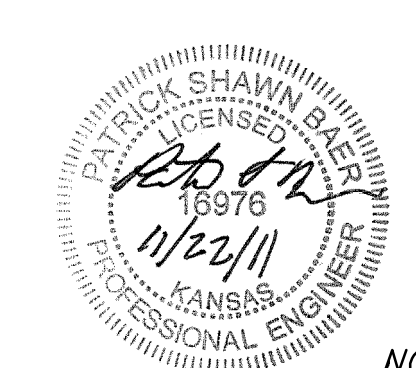
EVEN LOTS 2 TO 102 ON ROCHESTER ST & ODD & EVEN LOTS 2 TO 103 ON SHERWOOD ST. EXC S 20 FT DED. FOR ST. SHERWOOD'S SUB & SHERWOOD'S SUB OF SHERWOOD'S ADDITION EXEMPT 8076-0

Index

Title Sheet	1
ERU Plan	2
Line 1	3-4
Line 2	5
Line 2A & 3	6
Pond Plan	7
Drop Inlet Detail	8
ADS Drain Inlet Detail	9
Grading Plan (Reference Only)	10
Utility Plan (Reference Only)	11
Erosion Control Plan (Reference Only)	12
BMP Erosion Details	Available On Request

General Notes

1. Contractor will be required to provide notice to utility companies a minimum of forty-eight (48) hours prior to any excavation, as follows:
 Kansas One-Call 687-2470
 The Contractor must notify the following in case of an emergency:
 Cox Communications 262-4270
 Kansas Gas Service Company 1-888-482-4950
 Westar Energy (Electric) 383-8650
 Black Hills Energy (Gas) 1-800-303-0357
 Southwestern Bell Telephone Co. 1-800-286-8313
 262-6000
 City of Wichita Water Dept. (Water) 262-6000
 City of Wichita Sewer Maint. (SS) 268-4090
 City of Wichita Storm Sewer Maint. 268-4034
 City of Wichita Traffic Maint. 262-6000
2. All disturbed areas within the project site and that overlap the area to be disturbed shall have temporary and permanent erosion control measures installed by the general contractor. See site plan reference copy of the Erosion Control Plan and Landscape Plan and coordinate with General Contractor to ensure temp. erosion control measures are install within 7 days of construction.
3. All disturbed R/W areas not intended for pavement or sidewalk construction shall be seeded with Kansas Premium Fescue Blend at a rate of 8 lb./1000 Sq. Ft., fertilized with a 16-20-6 ratio at a rate of 4 lb./1000 Sq. Ft., and mulched with Prairie Hay at a rate of 92 lb./1000 Sq. Ft. Mulch shall be "patted" with forks or punched into soil to reduce loss due to wind.
4. Utility service lines, poles, valve boxes, meters, et cetera are to be adjusted as necessary by others prior to construction unless the plans specifically call for their adjustment by the Contractor or unless the plans specifically identify a utility to be adjusted by its owner during construction. Existing utilities and their location, as shown on the plans represent the best information obtainable for design and shall be field verified. The contractor will be required to work around existing utilities within the right-of-way which do not conflict with proposed construction.
5. Contractor shall furnish the inspector with a copy of the manufacturer's certification for all pipe used on this project after completion of pipe installation. The engineer will not certify the project to the city until pipe certification has been received.
6. Properties within the project limits may have underground sprinkler systems which conflict with new construction. Contractor will be required to remove such improvements should they not be removed by their owner at the time of construction. The Contractor will be required to salvage all sprinkler heads and/or valves and give such material to their owner. Portions of underground sprinkler systems not in conflict with new construction shall be protected from damage and shall remain in place. All work in connection with underground sprinkler systems shall be considered as subsidiary to the contract pay items of work.
7. Cuts made to paved surfaces on public property will be repaired by the City's contractor and charged against the owner/applicant. Unit repair prices are available from the City at 268-4418. A surcharge may be applicable: call 268-4418 for details. Repair costs to be paid prior to release of sewer service if sewer service is affected. Contractor shall obtain permit prior to construction.
8. Barriers and detour signage shall be in accordance with the Manual On Uniform Traffic Control Devices.
9. Contractor shall not start work on the project until the project inspector is assigned to the project and is present on the site. Contractor shall not start on the project until all necessary bonds and permits have been obtained. Bonds may include but are not limited to Statutory, Performance & Maintenance Any work done without inspection will be required to be uncovered for inspection.
10. Rubble from the removal of miscellaneous structures and excess excavation which is to be wasted shall be disposed of on sites to be provided by the Contractor. These sites shall be approved by the Engineer as to suitability, appearance and site location. Locations that, in the opinion of the Engineer, will leave an unsightly appearance will not be approved. All disposal sites must be approved by the Kansas Department of Health and Environment. Material either stockpiled or disposed of in a flood plain would require a Kansas State Board of Agriculture permit. Any material dumped in waters of the United States or wetlands is subject to U.S. Corps. of Engineers permitting regulations. Any material buried or stockpiled beyond approved construction limits would require additional archaeological investigations unless buried in a previously approved borrow location.
11. All storm water sewer lines and appurtenances shall be installed in accordance with the most recent edition of City of Wichita, Kansas Standard Specifications for the Construction of City Projects unless otherwise noted.
12. All storm water sewer lines shall be reinforced concrete pipe unless otherwise noted in the plans.
13. See Landscape and Grading Plans for Groundwater Infiltration Pond Plans.



VICINITY MAP



Baughman Company, P.A. 315 Ellis St. Wichita, KS 67211 P 316-262-7271 F 316-262-0145
 ENGINEERING | SURVEYING | PLANNING | LANDSCAPE ARCHITECTURE

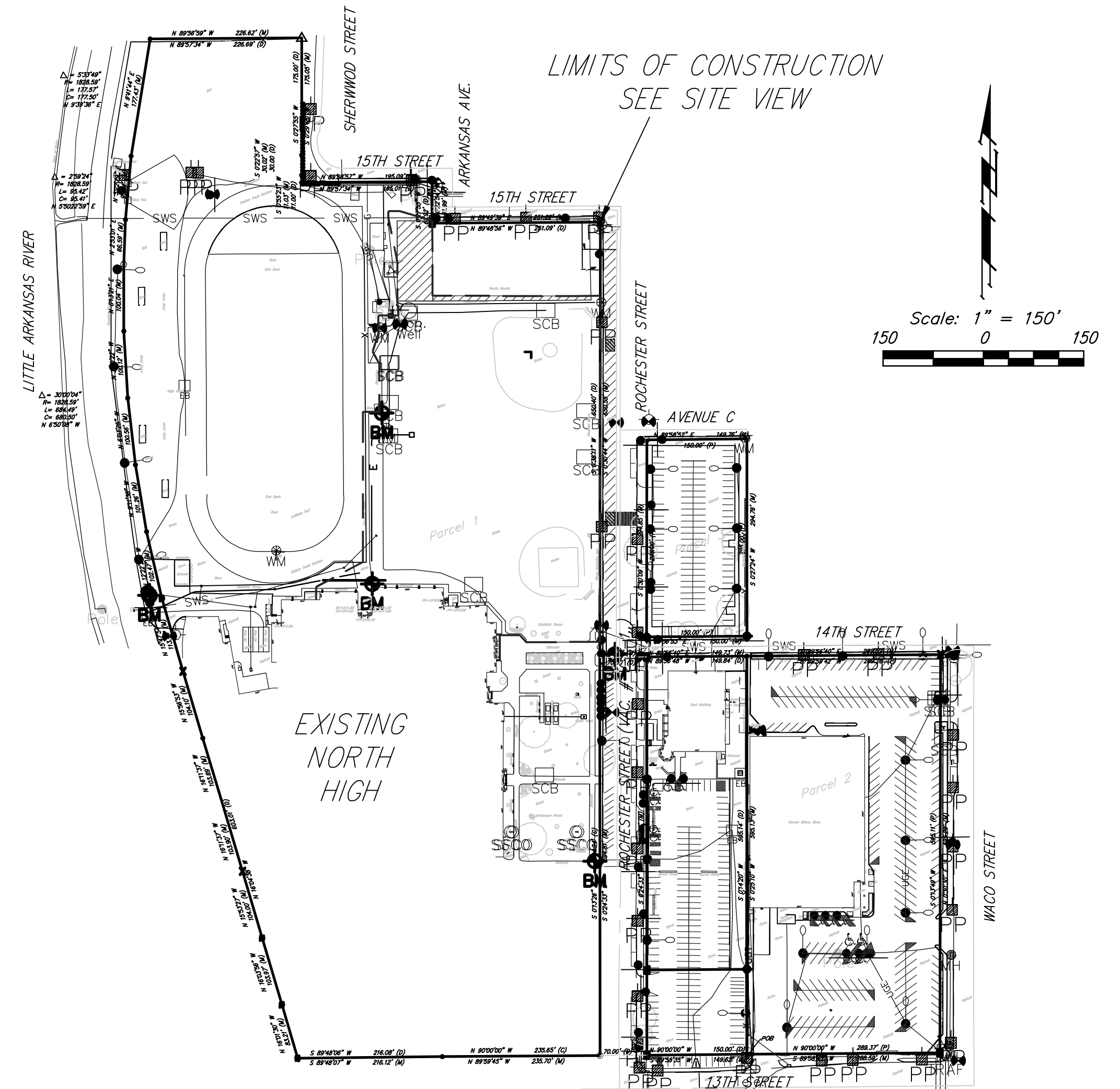
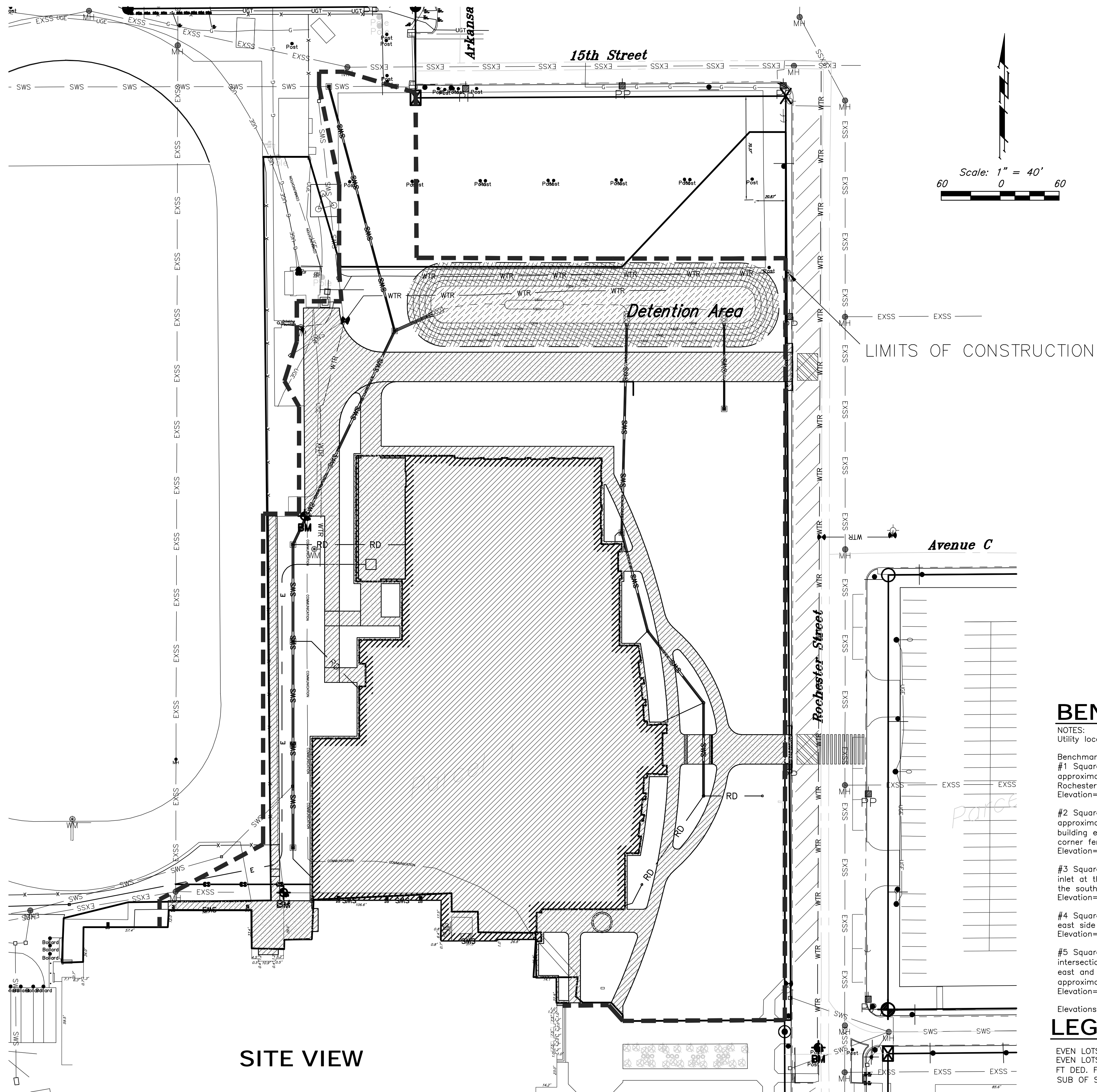
APPROVED AS NOTED
 BY CITY ENGINEER OF WICHITA

Engineering *Julianne Korman 11-22-11*

Storm Drainage *Jim Heintz 11-22-11*

NOTE TO CONTRACTORS

Installation, inspection and testing for this project is to be provided by a Licensed Consulting Engineering Firm under contract with the Owner/Developer. Said inspection to be in accordance with the City of Wichita standard construction engineering practices and certified by a Licensed Professional Engineer. No work shall be performed in dedicated easements or public right-of-way by the Contractor without such inspection nor shall any work be commenced without written authorization by the City Engineer. All Construction and Materials shall comply with the City of Wichita Specifications and Standards (on file and available in the City Engineer's Office).



VICINITY MAP

BENCHMARK

NOTES:
Utility locations are from USD 259 records and Kansas One-Call.

Benchmarks:
#1 Square cut on the end of north end of the curb approximately 1.5' northeast of the west pole of the gate across Rochester Street just south of 14th Street. Elevation=1307.93

#2 Square cut on the intersections of the sidewalks approximately 5' north of the northeast corner of the school building entrance and 32.5' south and 9' east of the southeast corner fence around the track. Elevation=1309.96

#3 Square cut on the top of curb on the south side of the curb inlet at the west curb approximately 36' west and 13.5' south of the southwest corner of the fence for the canoe area. Elevation=1307.11

#4 Square cut on the southeast corner of the concrete at the east side of the track where the bleachers are located. Elevation=1308.36

#5 Square cut at the northeast corner of the sidewalk intersections on the west side of Rochester approximately 31' east and 17' south of the memorial plaque by the tree. And approximately 320' south of the centerline of 14th street. Elevation=1307.81

Elevations are NGVD 29

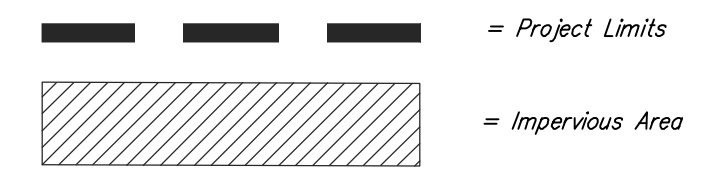
LEGAL DESCRIPTION

EVEN LOTS 2 TO 102 ON ROCHESTER ST & ODD & EVEN LOTS 2 TO 103 ON SHERWOOD ST. EXC S 20 FT DED. FOR ST. SHERWOOD'S SUB & SHERWOOD'S SUB OF SHERWOOD'S

SITE INFORMATION

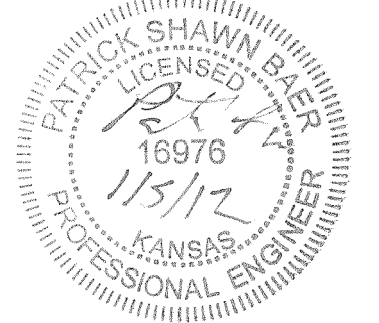
Total Disturbed Area: 185,560 sq. ft. (4.25 acres)
Existing Impervious Area Removed: ±20,188 sq. ft. (0.46 acres)
Impervious Area Added: ±83,114 sq. ft. (1.91 acres) (Including Building)
Previous Area: ±86,267 sq. ft. (1.98 acres)
Added Building Area: ±56,941 sq. ft. (1.31 acres)

EROSION CONTROL LEGEND



SITE VIEW

<p>USD 259 North High School ERU Wichita, Kansas</p>	
<p><small>Baughman Company, P.A. 315 Elm St. Wichita, KS 67211 P 316-262-2711 F 316-262-0187 ENGINEERING SURVEYING PLANNING LANDSCAPE ARCHITECTURE</small></p>	
<p>PROJECT NUMBER 0058PPD607853</p>	<p>DESIGN DRAWN PSB TNT</p>
<p>REVISIONS: 1/5/12 psb Revised disturbed, impervious & previous area</p>	<p>APPROVED DATE PSB 11/16/2011</p>
<p>SCALE varies</p>	
<p>SHEET</p>	
<p>2 OF 12</p>	



Sta 0+00, Line 1 =
BL Sta 14+86.7, 239.71' Lt.
Begin Construction of 18" RCP
w/ 18" Reinf. Concrete End
Section and 4'x8' ScourStop
End Section, see detail.

Caution!
Conc. encased Fiber
Optic line by others.

Contractor to Verify
Underground
Communications Fiber Optic
Line Prior to Construction
and relocate as necessary
for construction.

Caution!
Exist.
UGE
Crossing

Sta 3+94.3, Line 1 =
BL Sta 11+24.5, 333.79' Lt.
Construct Std. Drop Inlet
(2'x2') w/ 10" Stub.
Top Elev. = 1308.95

Sta 0+28.0, Line 1 =
Sta 0+00, Line 1A =
BL Sta 14+75.3, 265.25' Lt.
Construct Std. Drop Inlet
(2'x2')
Top Elev. = 1307.10

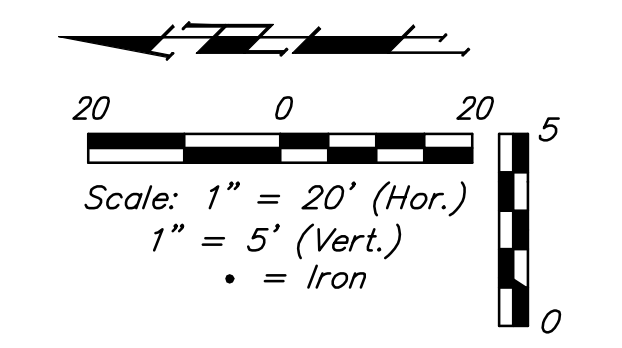
Private Irrigation Line
Crossing. Contractor to
adjust Water line as
necessary for construction
of Storm Water Sewer. Cost
to be subsidiary to "Site
Clearing & Restoration."

Sta 1+88.6, Line 1 =
BL Sta 13+30.2, 334.03' Lt.
Construct Std. Drop Inlet
(2'x2') w/ 12" Stub.
Top Elev. = 1307.90

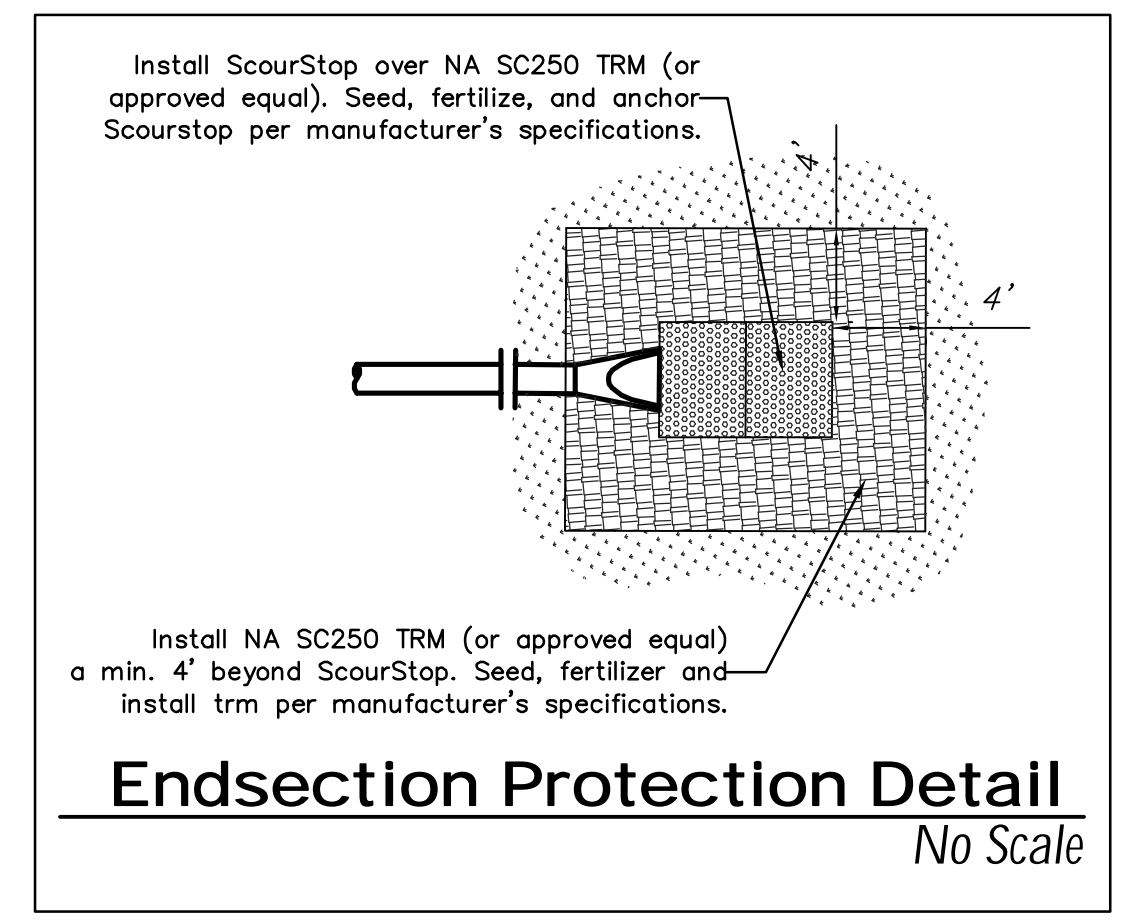
Caution!
Prop.
UGE
Crossing

Sta 2+54.3, Line 1 =
BL Sta 12+64.5, 333.96' Lt.
Construct Std. Drop Inlet
(2'x2')
Top Elev. = 1308.25

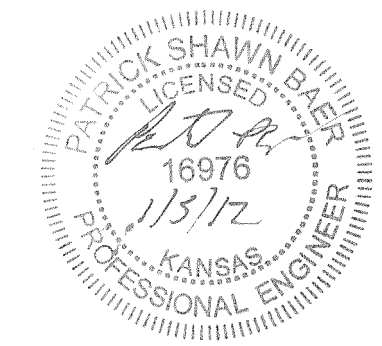
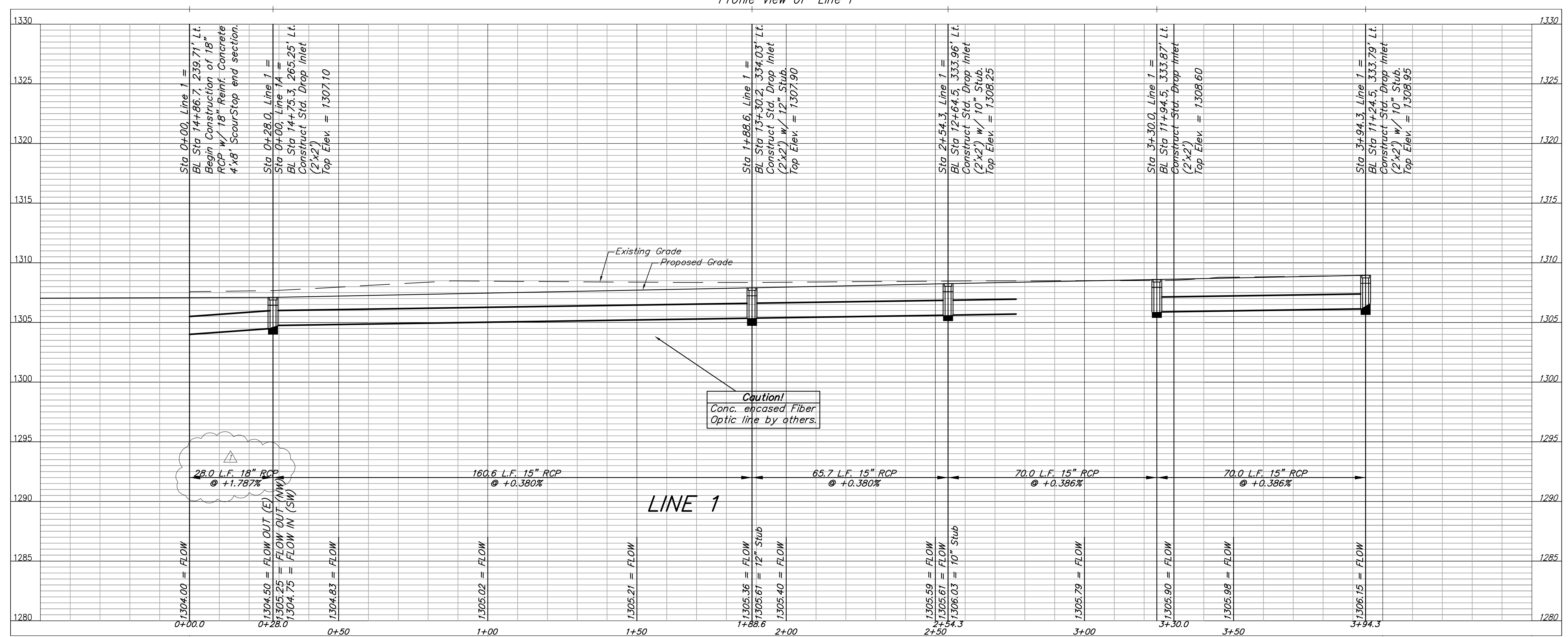
Sta 3+30.0, Line 1 =
BL Sta 11+94.5, 333.87' Lt.
Construct Std. Drop Inlet
(2'x2')
Top Elev. = 1308.60



Benchmarks:
#1 Square cut on the end of north end of the curb approximately 1.5' north of the northeast corner of the school building entrance and 32.5' south of 14th Street. Elevation=1307.93
#2 Square cut on the intersections of the sidewalks approximately 5' north of the northeast corner of the school building entrance and 9' east of the southeast corner fence around the track. Elevation=1309.96
Elevations are NGVD 29
See Cover Sheet for More Benchmarks.

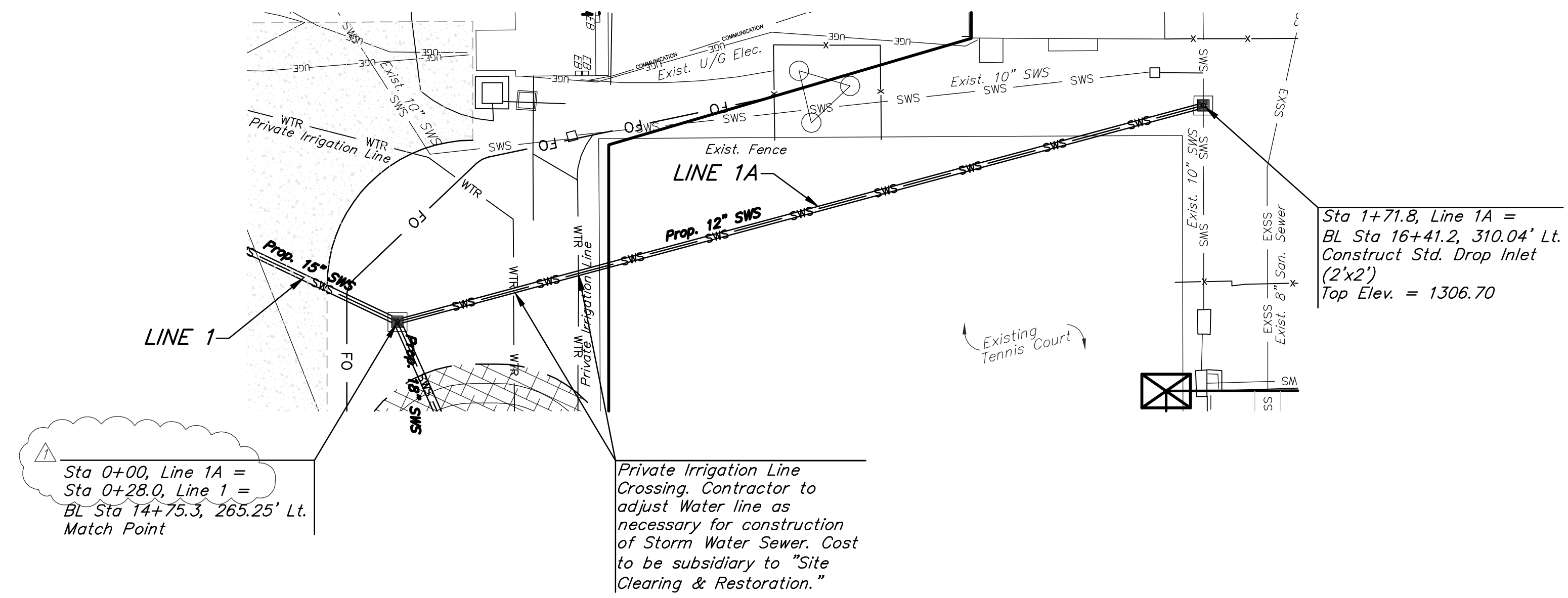
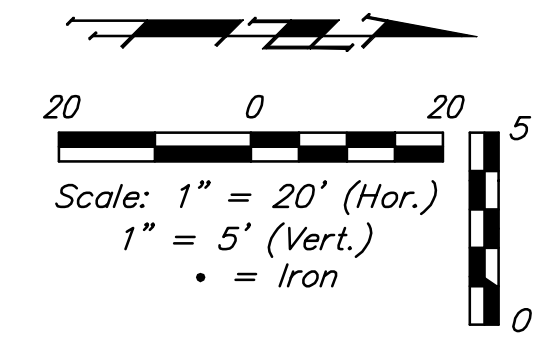


Profile View of Line 1

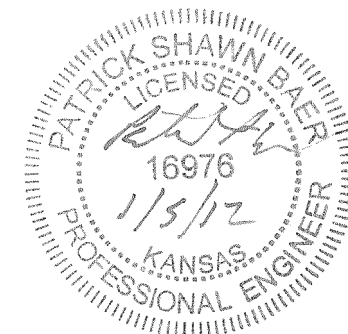
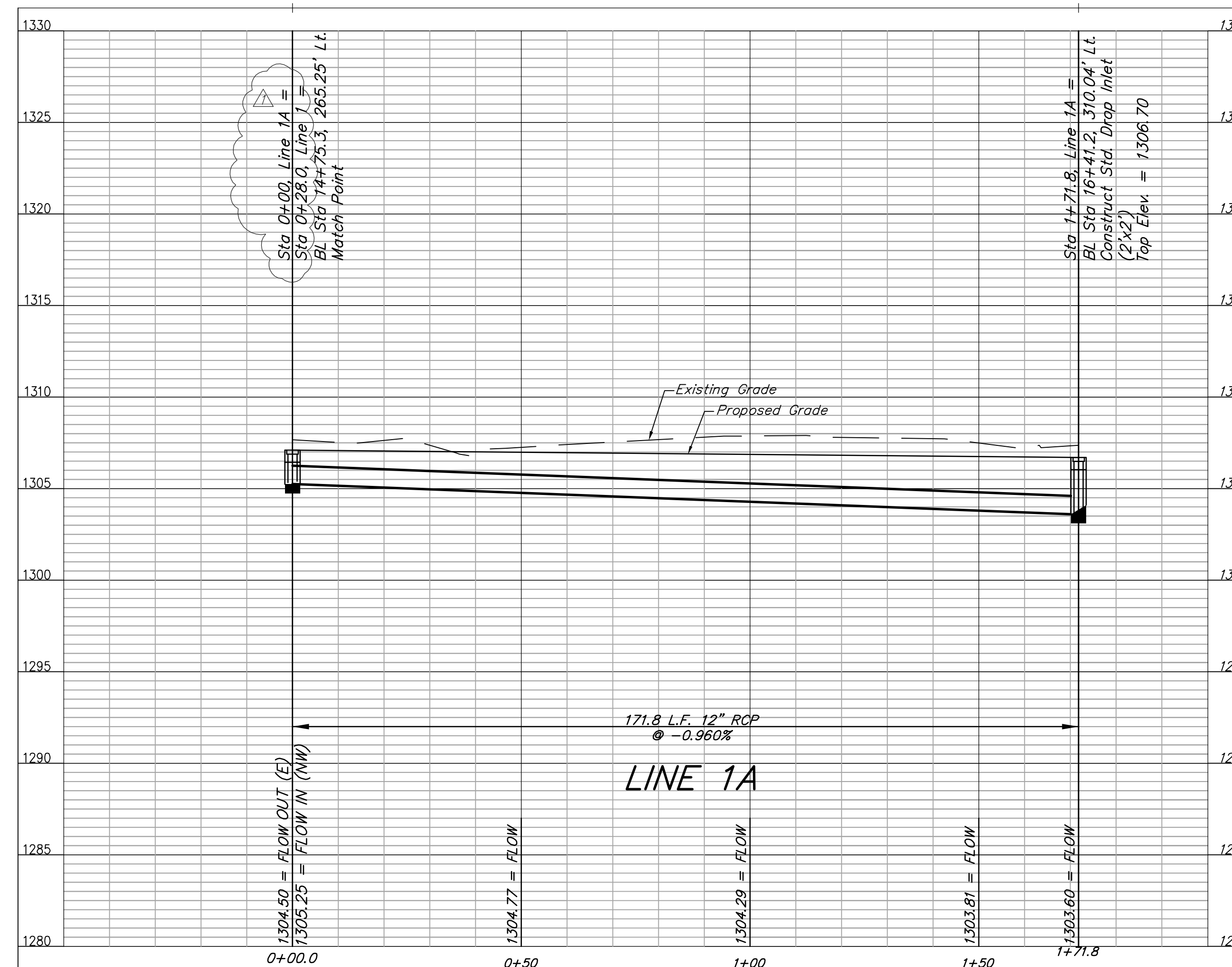


		USD 259 North High School Line 1 Wichita, Kansas	
<small>Baughman Company, P.A. 315 E. 5th St. Wichita, KS 67211 P:316.262.7271 F:316.262.0184 ENGINEERING SURVEYING PLANNING LANDSCAPE ARCHITECTURE</small>			
PROJECT NUMBER 0058 PPD 607853	DESIGN PSB	DRAWN TNT	APPROVED PSB
REVISIONS: 1/5/12 <small>Relocated 0+00 endsection and restationed line 1.</small>	psb	DATE 11/16/11	SCALE varies
		3 OF 12	

Benchmarks:
 #1 Square cut on the end of north end of the curb approximately 1.5' northeast of the west pole of the gate across Rochester Street just south of 14th Street.
 Elevation=1307.93
 #2 Square cut on the intersections of the sidewalks approximately 5' north of the northeast corner of the school building entrance and 32.5' south and 9' east of the southeast corner fence around the track.
 Elevation=1309.96
 Elevations are NGVD 29
 See Cover Sheet for More Benchmarks.

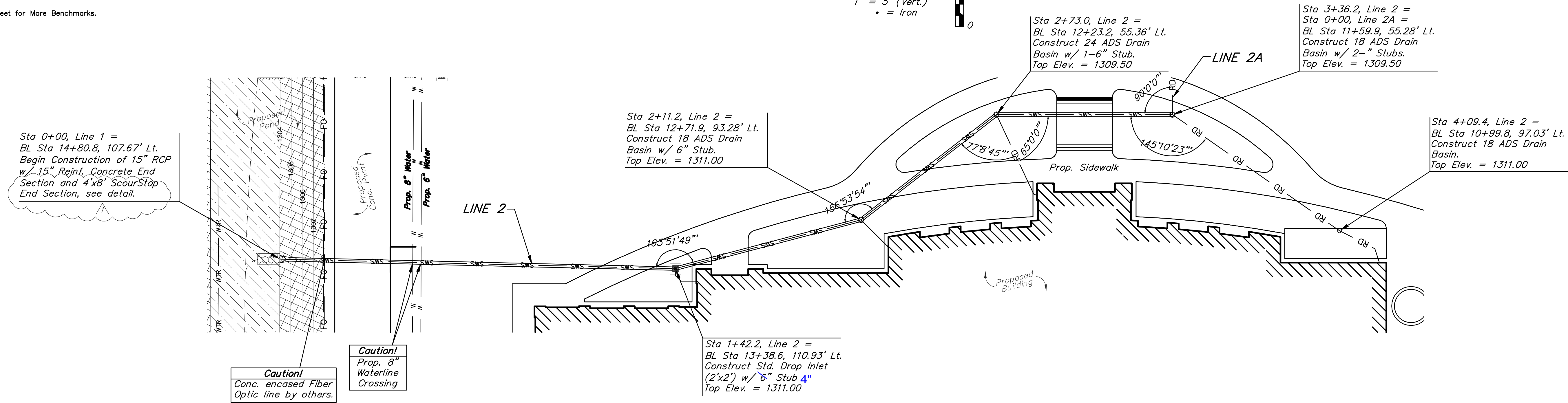
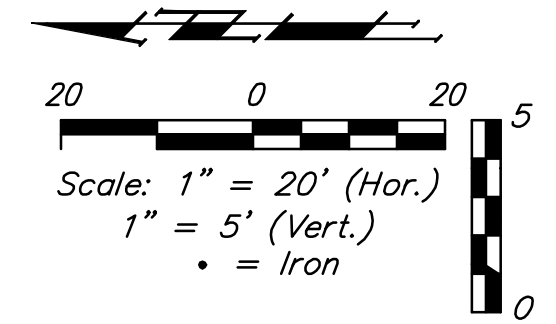


Profile View of Line 1A

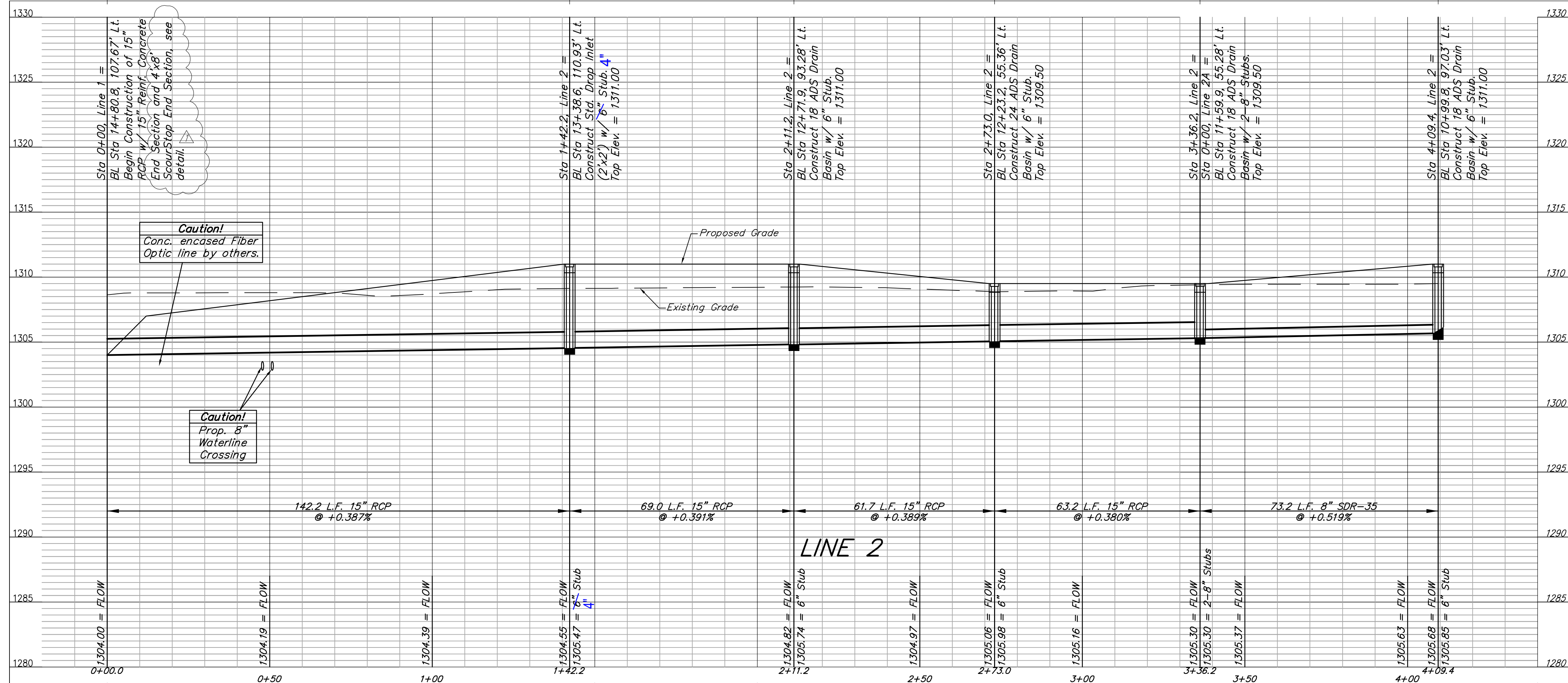


	USD 259 North High School	
	Line 1A Wichita, Kansas	
<small>Baughman Company, P.A. 315 Elm St. Wichita, KS 67211 P:316.262.7271 F:316.262.0199 ENGINEERING SURVEYING PLANNING LANDSCAPE ARCHITECTURE</small>		
PROJECT NUMBER 0058 PPD 607853	DESIGN PSB	DRAWN TNT
REVISIONS: 1/5/12 Revised line 1 stationing	APPROVED PSB	DATE 11/16/11
SCALE varies		SHEET 4 OF 12

Benchmarks:
 #1 Square cut on the end of north end of the curb approximately 1.5' northeast of the west pole of the gate across Rochester Street just south of 14th Street. Elevation=1307.93
 #2 Square cut on the intersections of the sidewalks approximately 5' north of the northeast corner of the school building entrance and 32.5' south and 9' east of the southeast corner fence around the track. Elevation=1309.96
 Elevations are NGVD 29
 See Cover Sheet for More Benchmarks.



Profile View of Line 2



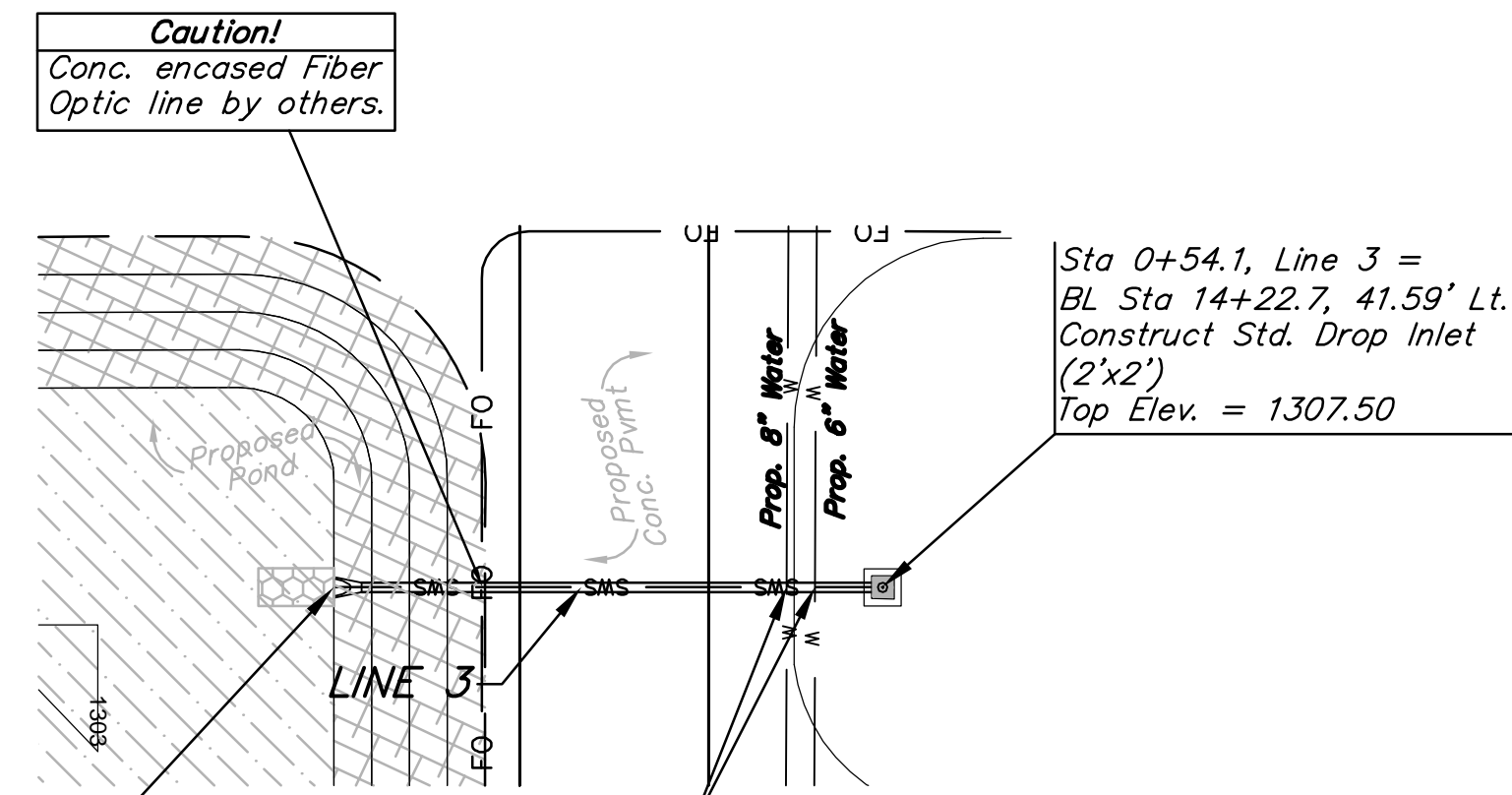
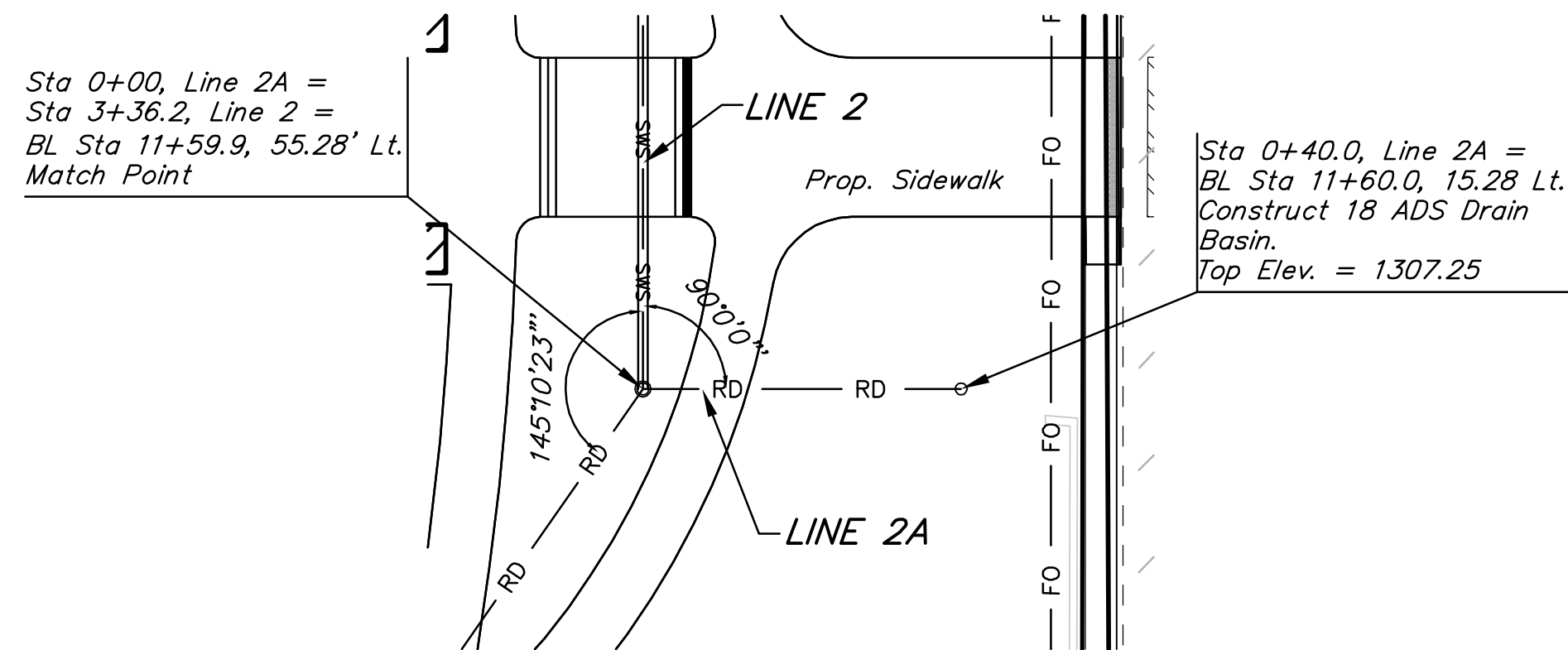
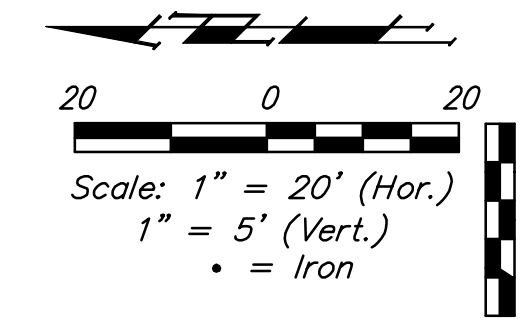
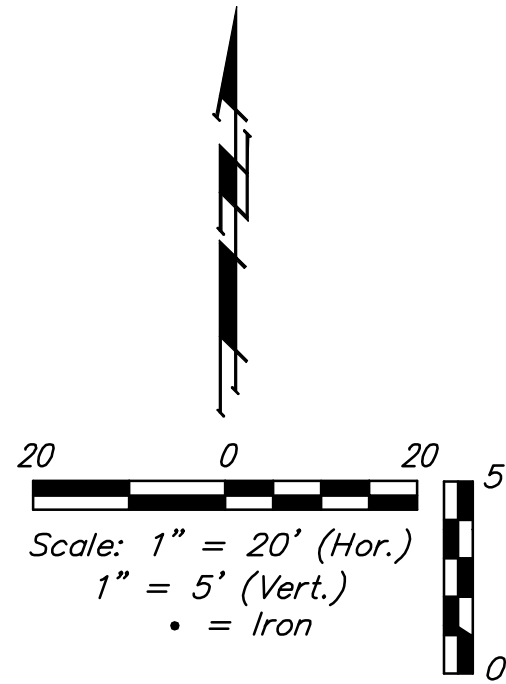
	USD 259 North High School	
	Line 2	
Wichita, Kansas		
<small>Baughman Company, P.A. 315 E. 3rd St. Wichita, KS 67211 P 316-262-0100 ENGINEERING SURVEYING PLANNING LANDSCAPE ARCHITECTURE</small>		
PROJECT NUMBER 0058 PPD 607853	DESIGN PSB	DRAWN TNT
REVISIONS: 1/5/12 psb Revised Scourstop and section callout.	APPROVED PSB	DATE 11/16/11
SCALE varies		SHEET 5 OF 12

Benchmarks:
 #1 Square cut on the end of north end of the curb approximately 1.5' northeast of the west pole of the gate across Rochester Street just south of 14th Street.
 Elevation=1307.93

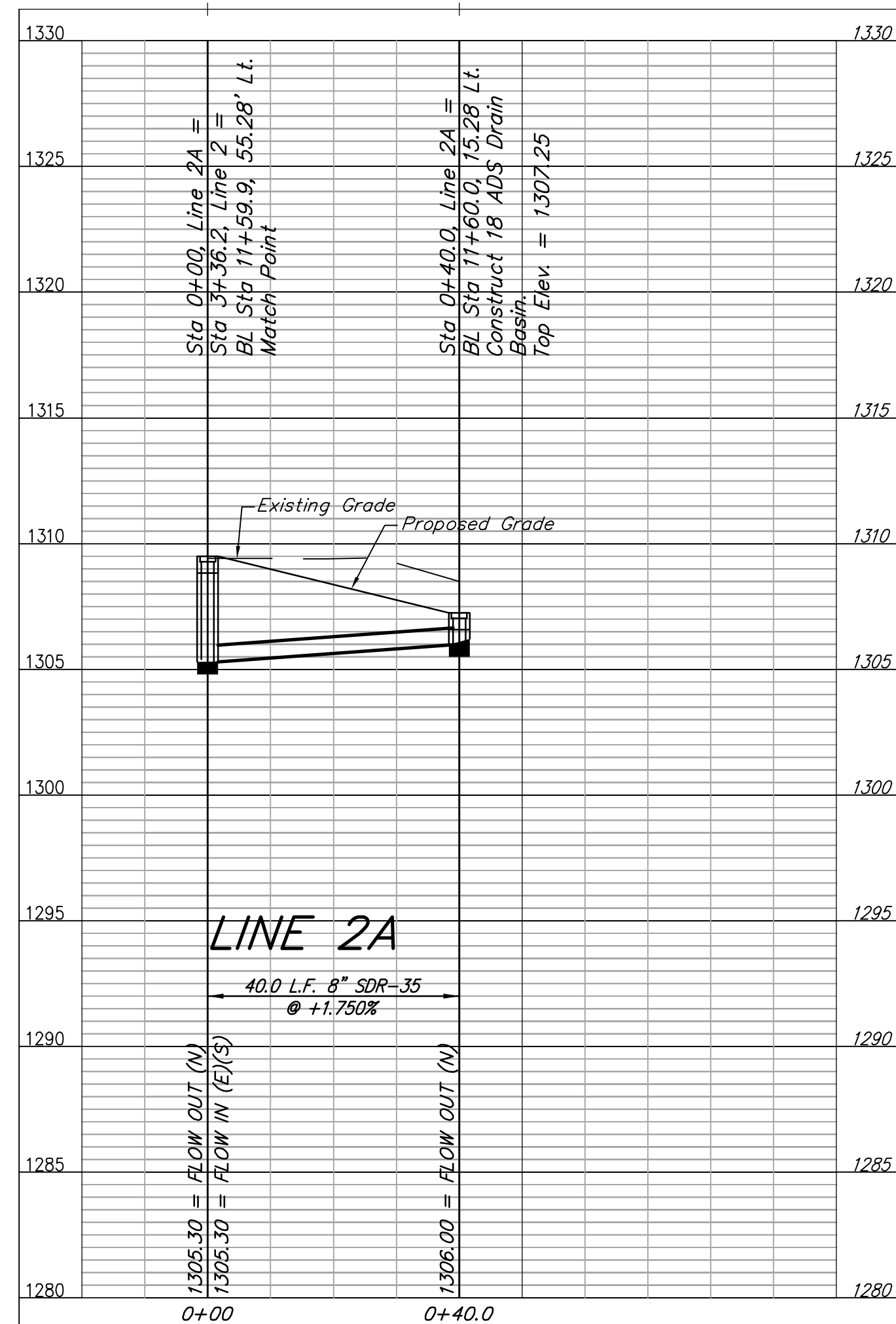
#2 Square cut on the intersections of the sidewalks approximately 5' north of the northeast corner of the school building entrance and 32.5' south and 9' east of the southeast corner fence around the track.
 Elevation=1309.96

Elevations are NGVD 29

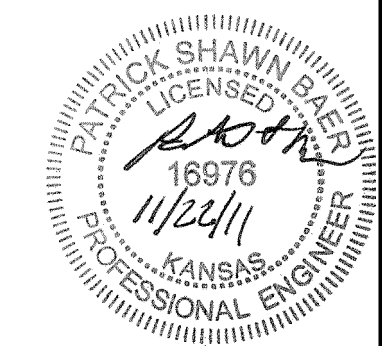
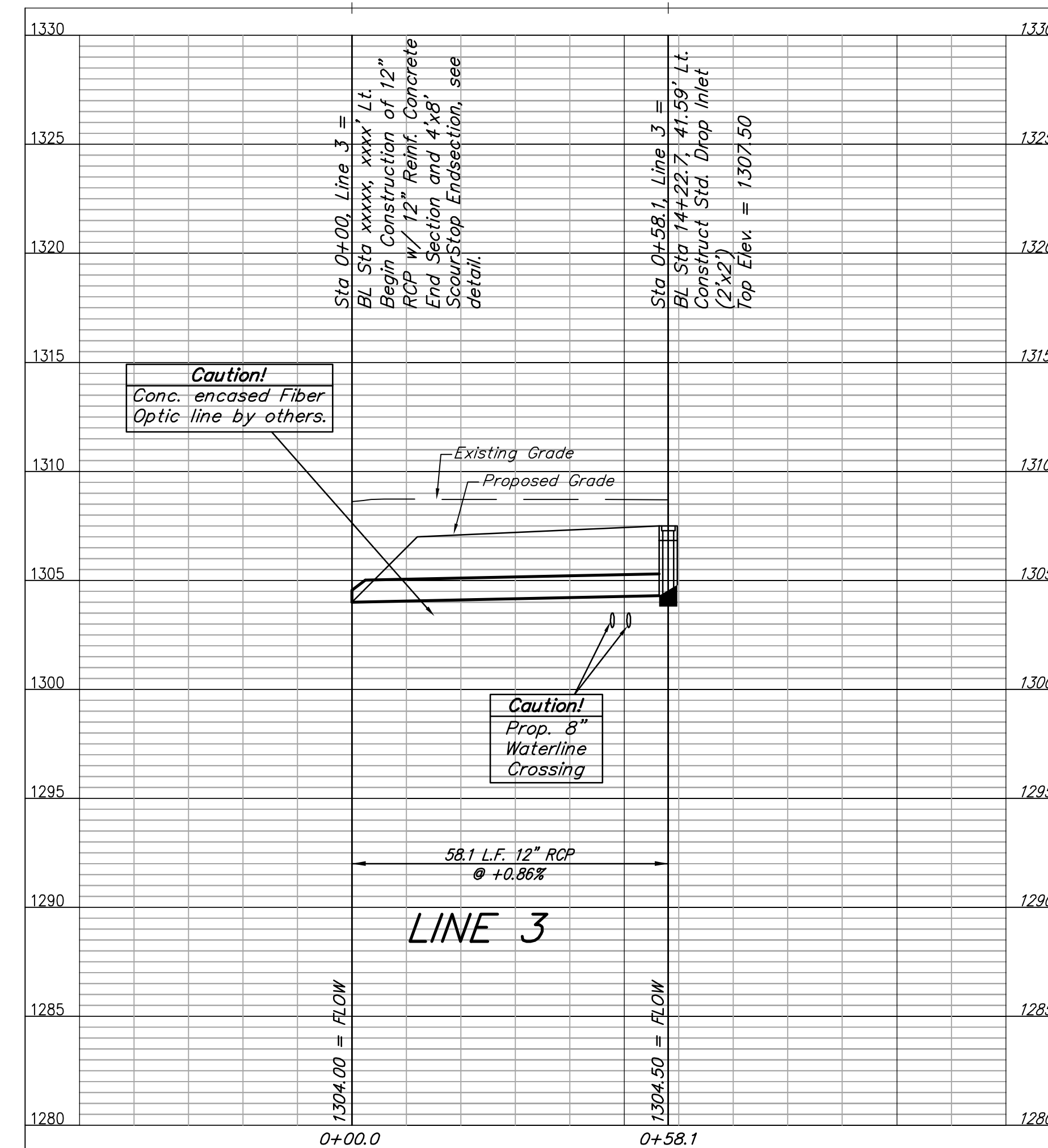
See Cover Sheet for More Benchmarks.



Profile View of WTR Line 2A

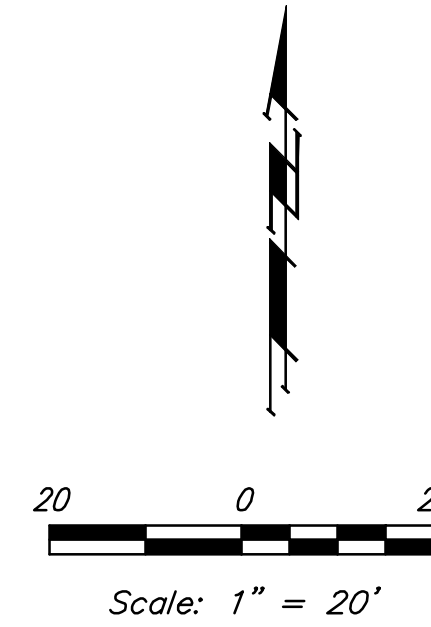
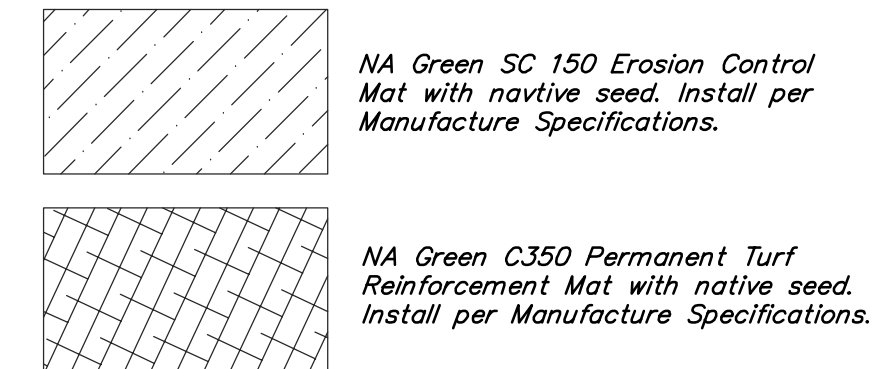
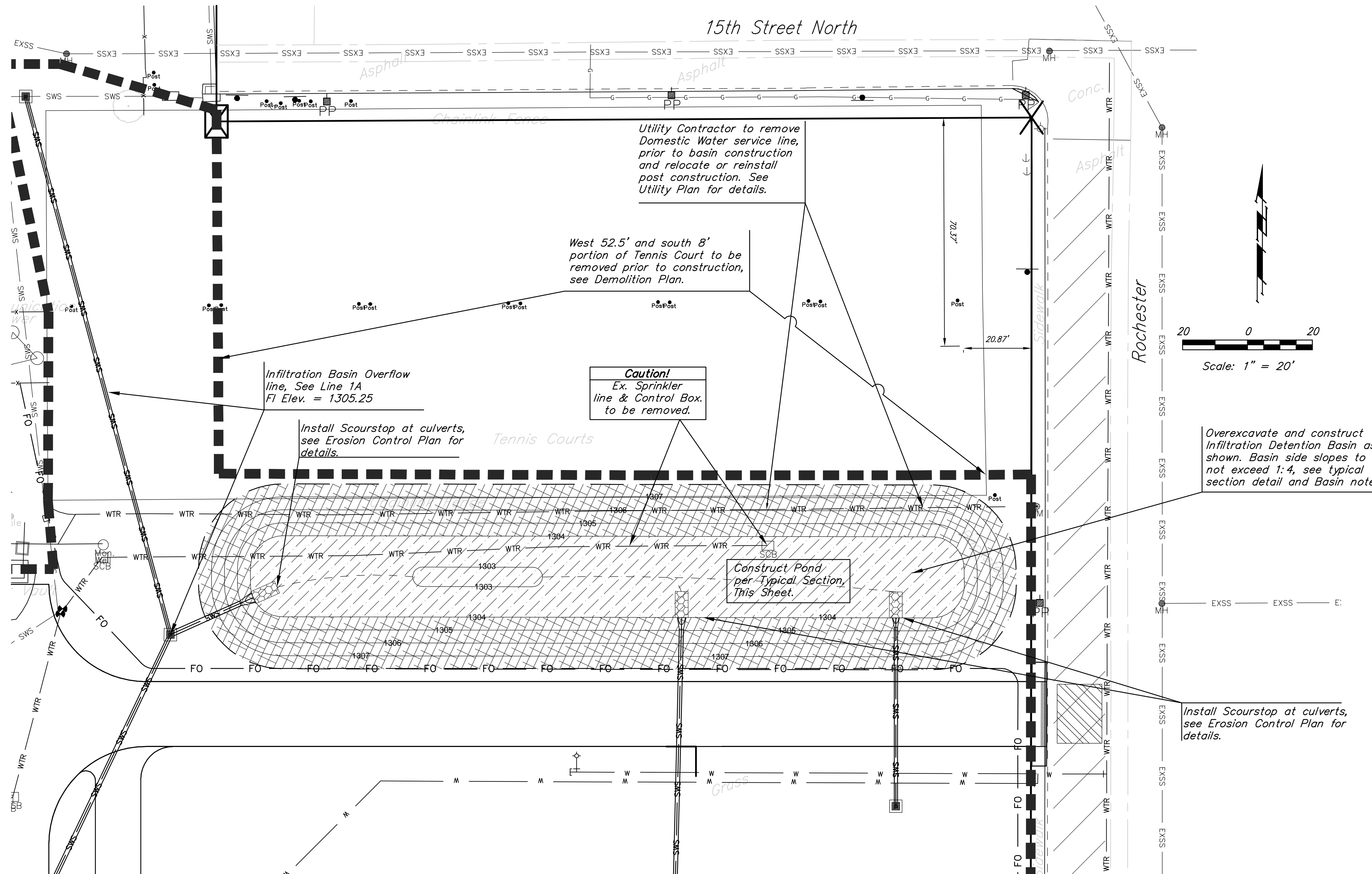


Profile View of Line 3



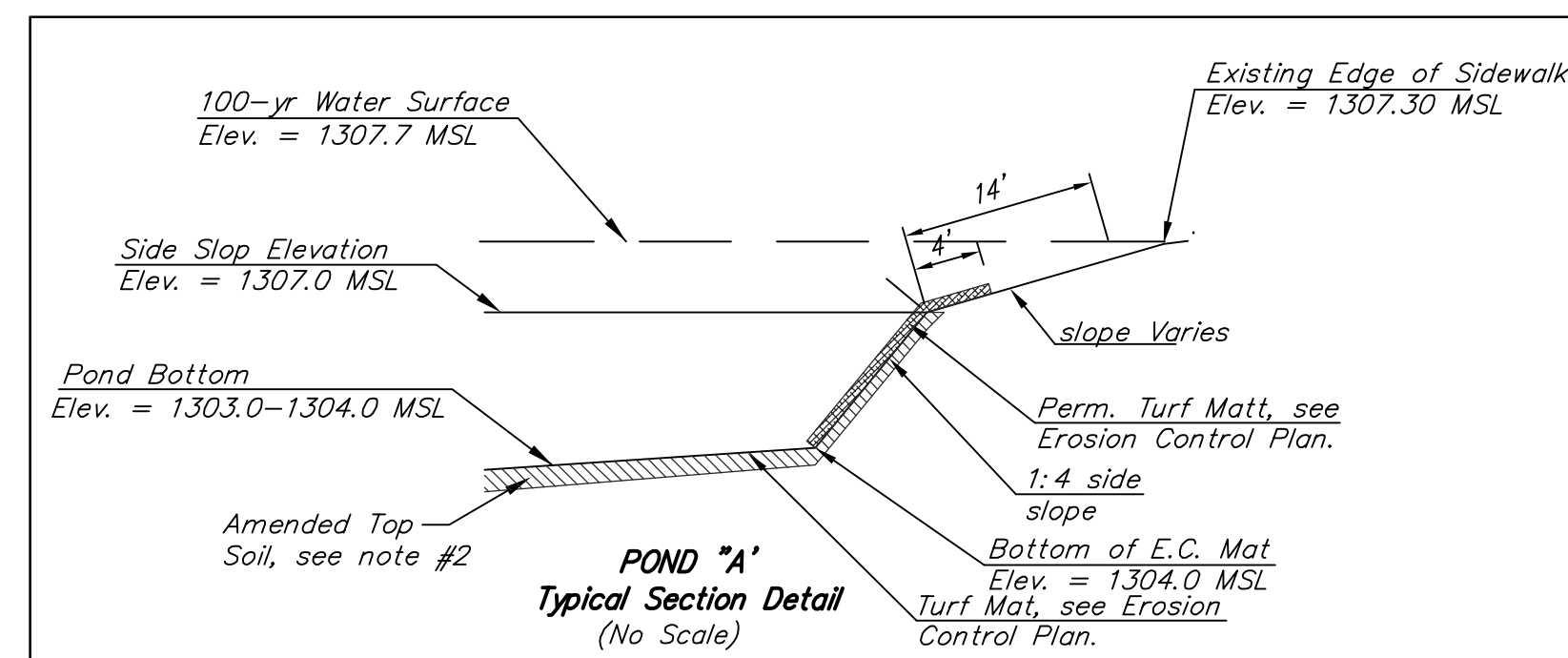
		USD 259 North High School Line 2A & 3 Wichita, Kansas	
<small>Baughman Company, P.A. 315 Ellis St. Wichita, KS 67211 P 316-263-7271 F 316-262-0149 ENGINEERING SURVEYING PLANNING LANDSCAPE ARCHITECTURE</small>			
PROJECT NUMBER 0.058 PPD 607853	DESIGN PSB	DRAWN TNT	APPROVED PSB
REVISIONS:	DATE 11/16/11	SCALE varies	SHEET 6 OF 12

Benchmarks:
 #1 Square cut on the end of north end of the curb approximately 1.5' northeast of the west pole of the gate across Rochester Street just south of 14th Street.
 Elevation=1307.93
 #2 Square cut on the intersections of the sidewalks approximately 5' north of the northeast corner of the school building entrance and 32.5' south and 9' east of the southeast corner fence around the track.
 Elevation=1309.96
 Elevations are NGVD 29
 See Cover Sheet for More Benchmarks.



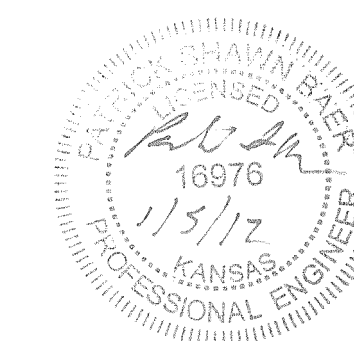
INFILTRATION DETENTION BASIN NOTES:

- Basin bottom and shall be over-excavated to the existing sand layer, see Geotechnical Report by Terracon Consultants Inc., and backfilled with on site sandy soil excavated from proposed Building Footings. Overexcavation and backfilling to be verified by PPD Inspector, to be paid by the contractor. Soil testing shall be arranged by the Contractor at the request of the Inspector.
- Top 4" layer of bottom and sideslop of basin to consist of amended top soil consisting of 75% construction sand, 10% Organic Matter, and 15% Top Soil.
- All of disturbed areas, see Erosion Control for temporary seeding, and Native Seed note for permanent seeding requirements.
- Seeding within Infiltration Detention Basin to consist of a short Grass Prairie Mix: 12# PLS/ac. (Sharp's Shortgrass Pasture Mix from Sharp Bros. Seed Co. Heely, KS) 50% Blue Grama, Native, 25% Buffalograss, Sharp's Improved w/KN03, 25% Sideoats Grama, El Reno.
- Install Erosion Control Mat (North American Green Bionet S150BN & C350 or approved equal) within Basin as indicated on Erosion Control Plan.



Elevation	Basin Area	Basin Volume
1303	200	0
1304	5,414	2,218
1305	7,356	8,355
1306	9,398	16,933
1307	11,540	27,383
1308	14,000	40,132

Event	Basin Event Results					Existing Peak Out
	Peak In	Peak Out	Peak Elev.	Peak Vol.	Peak Out	
1-yr	9.6	0.9	1,305.8	14,640	7.3	
2-yr	12.9	2.4	1,306.2	18,600	10.4	
5-yr	17.9	2.8	1,306.9	25,990	15.1	
10-yr	21.0	3.2	1,307.3	31,480	9.4	
25-yr	25.2	10.1	1,307.7	35,700	22.7	
50-yr	29.0	17.0	1,307.8	37,680	26.5	
100-yr	33.2	24.1	1,307.9	39,340	30.7	



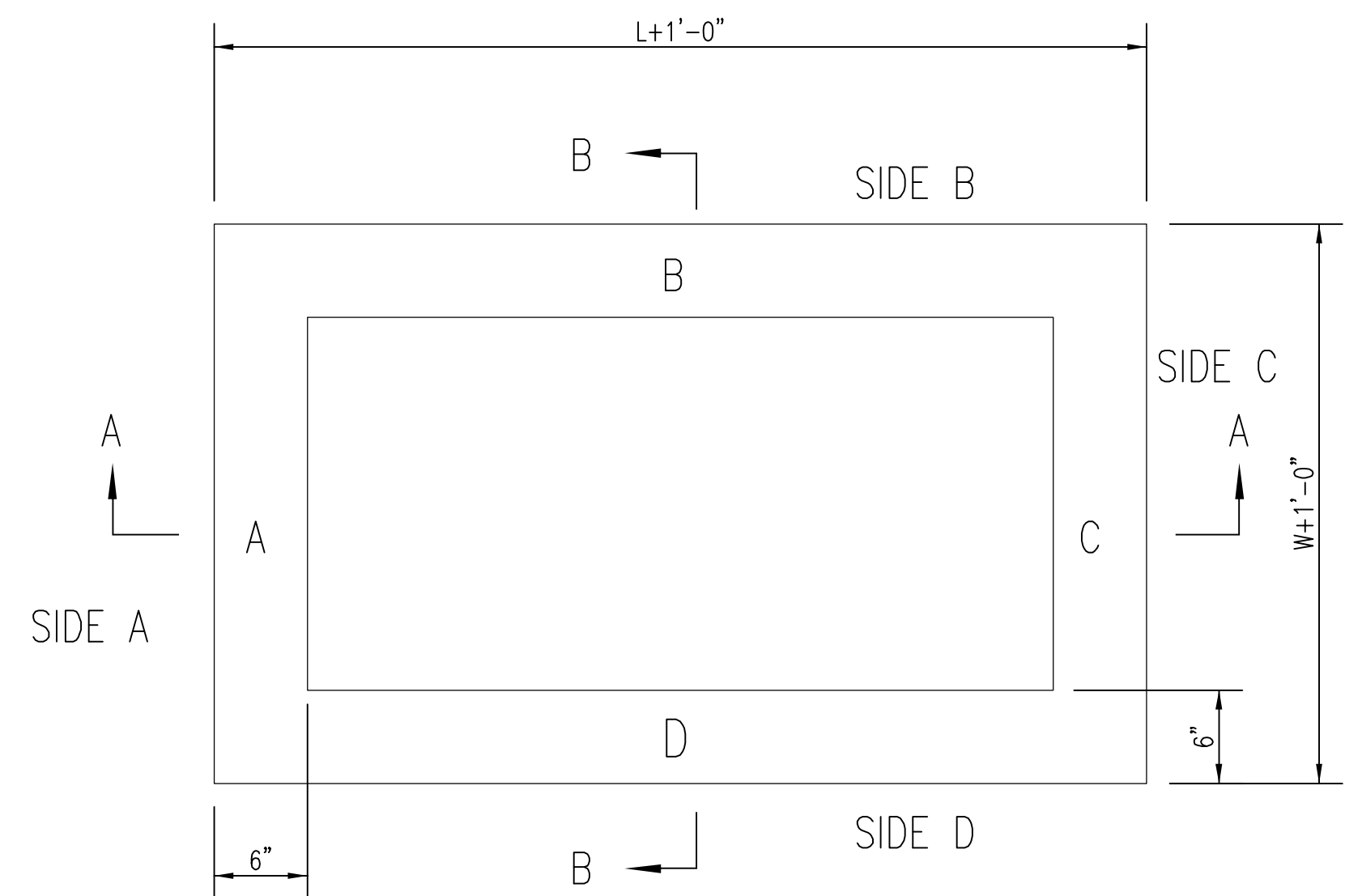
Baughman | USD 259 North High School
Infiltration Basin
 Wichita, Kansas

Baughman Company, P.A. | 315 E. 3rd St. | Wichita, KS 67211 | P: 316.262.0119
 ENGINEERING | SURVEYING | PLANNING | LANDSCAPE ARCHITECTURE

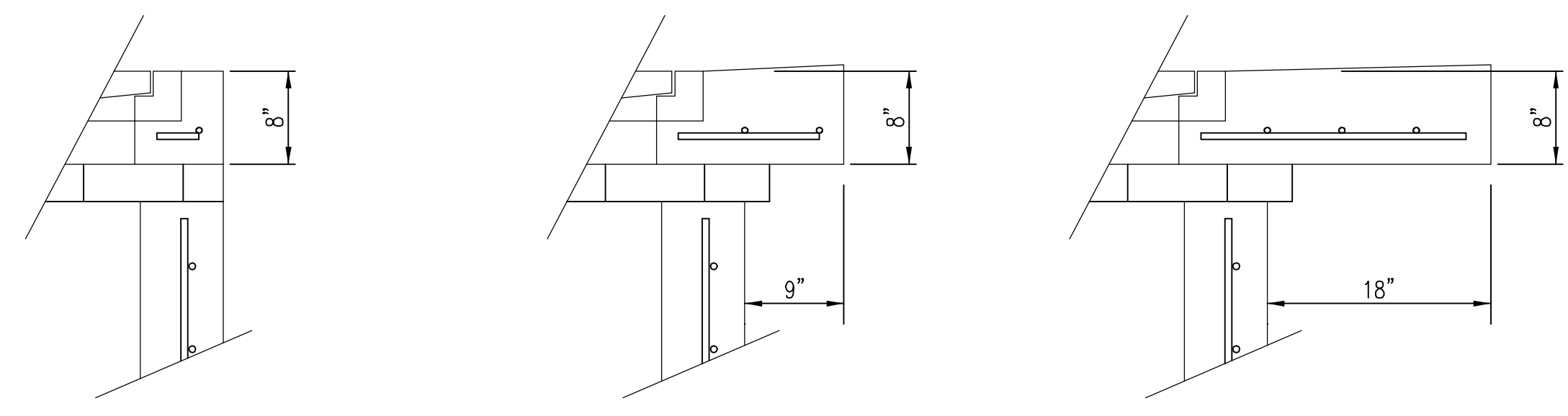
PROJECT NUMBER 0058 PPD 607853	DESIGN PSB	DRAWN TNT
REVISIONS 1/5/12 psb Revised Basin Shape and Line 1 outfall location.	APPROVED PSB	DATE 11/16/2011
SCALE varies		SHEET 7 OF 12

E:\Projects\USD 259 North High (11-04-E617)\Engineering\PPD Revised 1-5-12.dwg

FWHA REGION NO.	STATE	PROJECT NO.	FISCAL YEAR	SHEET NO.	TOTAL SHEETS
7	KANSAS	XXX-XXXX-XX	2011	XX	XX



TOP VIEW



FLUSH STYLE TOP
NO APRON

9" APRON
* APRON TO EXTEND ON ALL 4 SIDES OF INLET.
DESIGNER TO DESIGNATE APRON SIZE.

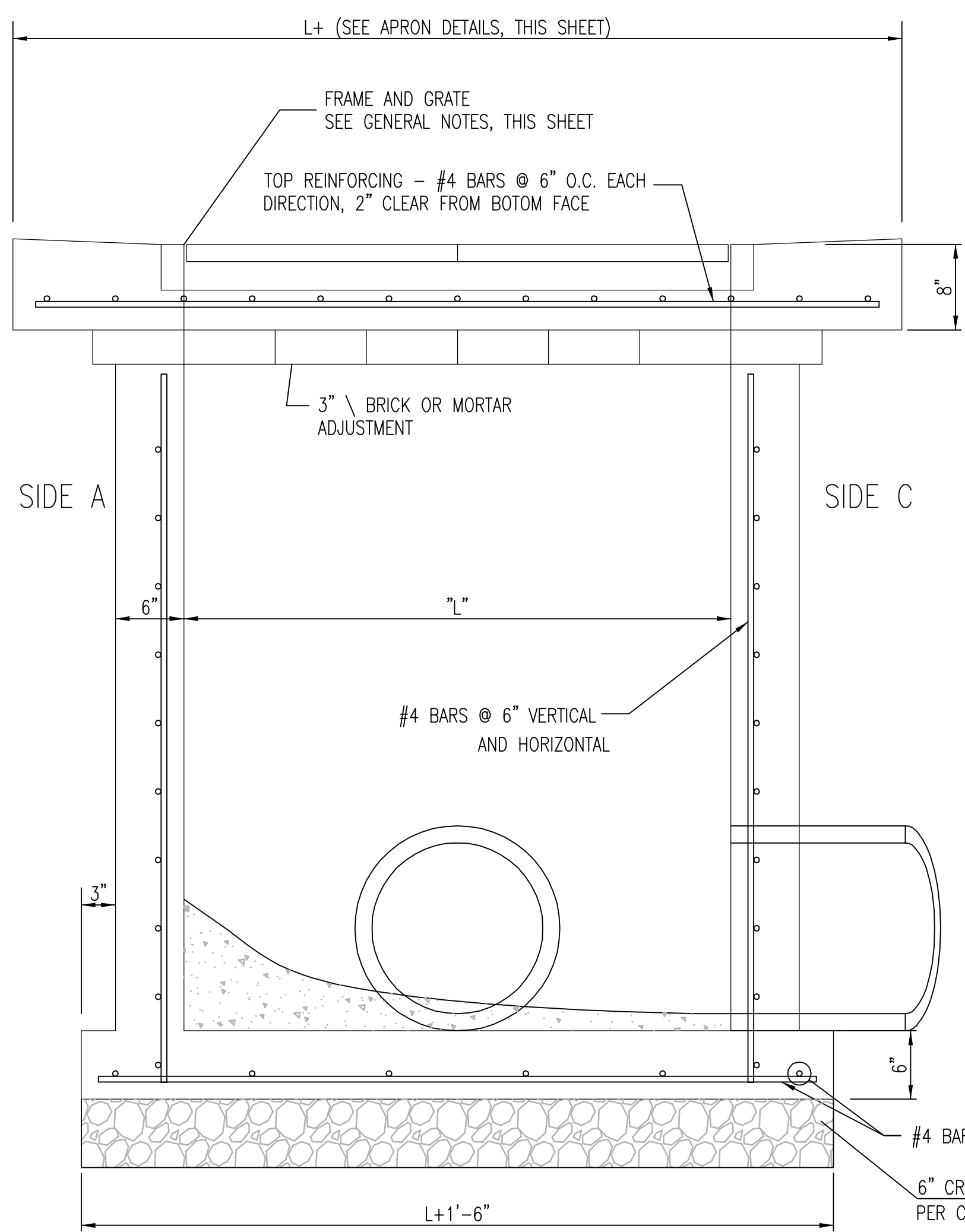
18" APRON

W=2' and L=2' for SINGLE DROP INLET
W=2' and L=4' for DOUBLE DROP INLET

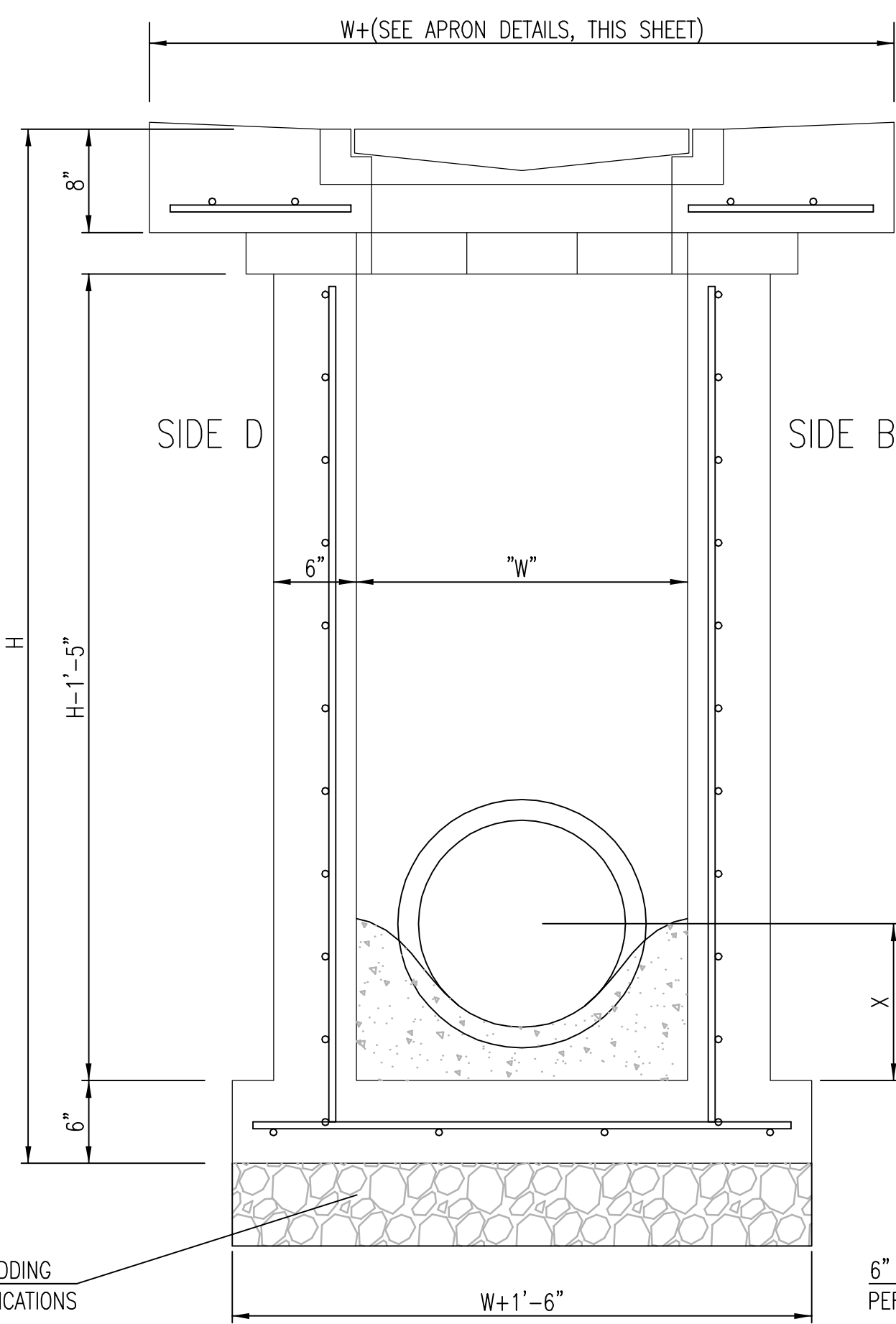
The structure(s) on this detail are designed for HS-20 at these specific dimensions only. If larger dimensions are required, the ENGINEER shall provide specific structure design for approval by the City Engineer's office.

GENERAL NOTES

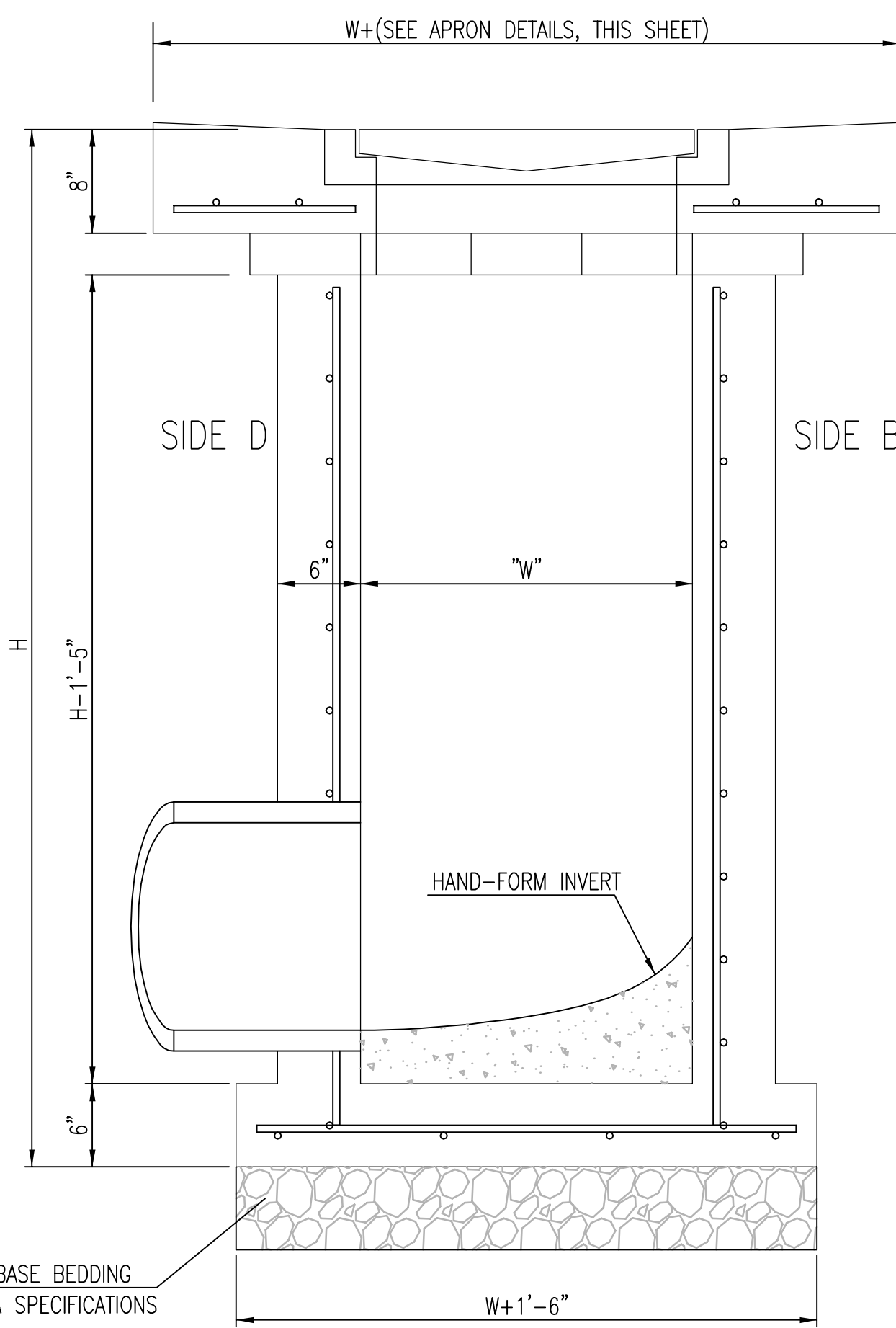
1. GRATE FRAME TO BE INSTALLED ON THIN MORTAR CUSHION TO INSURE FULL SUPPORT ALONG BRICK. CONCRETE USED FOR INLET CONSTRUCTION SHALL CONFORM TO CITY OF WICHITA SPECIFICATIONS FOR CONCRETE PAVEMENT MIX.
2. INLET INVERT SHALL BE SHAPED WITH 8 SACK SAND MIX CONCRETE TO CREATE FLOW CHANNELS AND TO INCREASE HYDRAULIC EFFICIENCY SUCH THAT THE INLET WILL BE SELF CLEANING BETWEEN ALL INLET AND/OR OUTLET PIPES.
3. THE ENDS OF ALL PIPES INSTALLED IN INLETS SHALL BE CUT OFF FLUSH WITH THE INSIDE FACE OF THE INLET WALL.
4. INLET FRAME AND GRATE TO BE DEETER #2433, EJIW #5391-Z1 OR APPROVED EQUAL FOR 2'x2' SINGLE DROP INLET AND DEETER #2434, EJIW #5391 Z3 OR APPROVED EQUAL FOR 2'x4' DOUBLE DROP INLET.
5. CONTRACTOR SHALL REMOVE LIFTING HOOKS AFTER INSTALLATION. RECESSES IN INLET WALL SHALL BE GROUDED FLUSH TO THE INLET WALL WITH HYDRAULIC CEMENT AFTER THE INLET IS IN PLACE. LIFTING HOLES THRU THE INLET WALL WILL NOT BE ACCEPTED.



SECTION "A-A"



SECTION "B-B"
END OUTLET

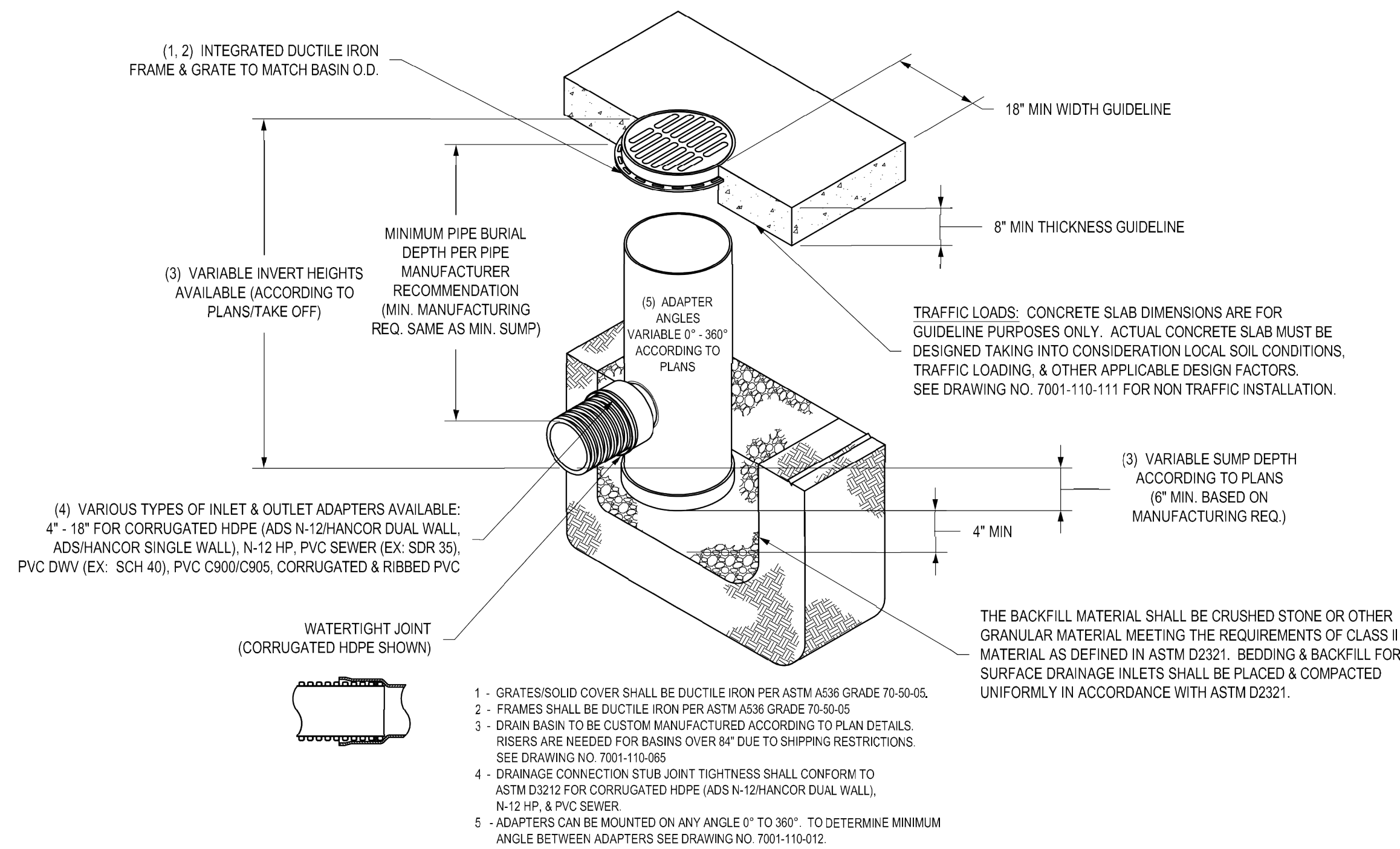


SECTION "B-B"
SIDE OUTLET



SINGLE/DOUBLE DROP INLET		
CITY ENGINEER JAMES L. ARMOUR, P.E., L.S.		
PROJECT NUMBER 0058PPD607853	OCA NUMBER _____	DATE 11/2010
CITY ENGINEER'S OFFICE CITY HALL - SEVENTH FLOOR 455 NORTH MAIN STREET WICHITA, KANSAS 67202-1620 (316) 268-4501		DESIGN _____ DRAWN _____ SHEET 8 of 12

NYLOPLAST 18" DRAIN BASIN: 2818AG __X



- 1 - GRATES/SOLID COVER SHALL BE DUCTILE IRON PER ASTM A536 GRADE 70-50-05.
- 2 - FRAMES SHALL BE DUCTILE IRON PER ASTM A536 GRADE 70-50-05.
- 3 - DRAIN BASIN TO BE CUSTOM MANUFACTURED ACCORDING TO PLAN DETAILS. RISERS ARE NEEDED FOR BASINS OVER 84" DUE TO SHIPPING RESTRICTIONS. SEE DRAWING NO. 7001-110-065.
- 4 - DRAINAGE CONNECTION STUB JOINT TIGHTNESS SHALL CONFORM TO ASTM D3212 FOR CORRUGATED HDPE (ADS N-12/HANCOR DUAL WALL, N-12 HP, & PVC SEWER).
- 5 - ADAPTERS CAN BE MOUNTED ON ANY ANGLE 0° TO 360°. TO DETERMINE MINIMUM ANGLE BETWEEN ADAPTERS SEE DRAWING NO. 7001-110-012.

GRATE OPTIONS	LOAD RATING	PART #	DRAWING #
PEDESTRIAN	MEETS H-10	1899GCP	7001-110-212
STANDARD	MEETS H-20	1899GCS	7001-110-213
SOLID COVER	MEETS H-20	1899GCG	7001-110-214
DOME	N/A	1899GCD	7001-110-215
DROP IN GRATE	LIGHT DUTY	1801DI	7001-110-074

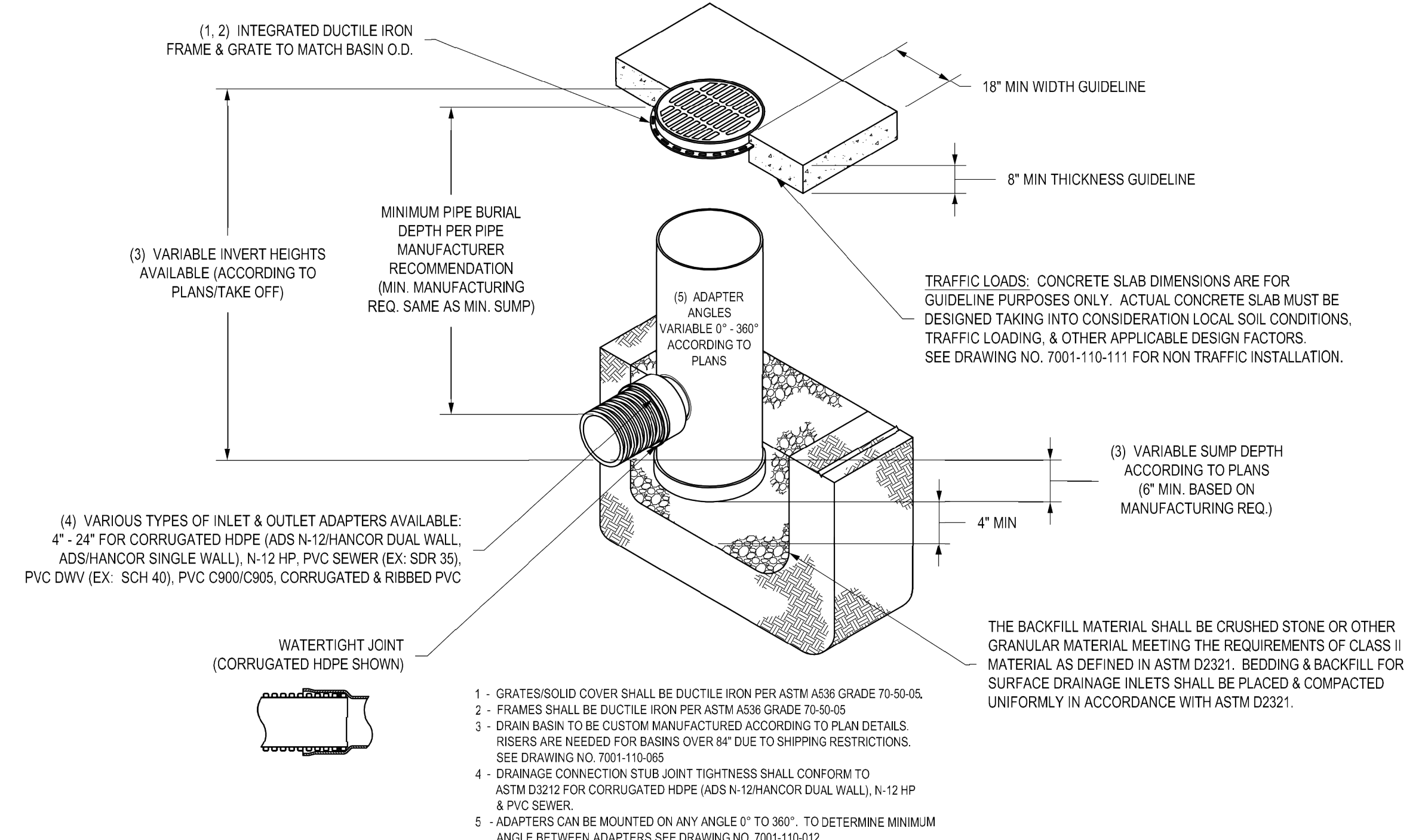
THIS PRINT DISCLOSES SUBJECT MATTER IN WHICH NYLOPLAST HAS PROPRIETARY RIGHTS. THE RECEIPT OR POSSESSION OF THIS PRINT DOES NOT CONFER, TRANSFER, OR LICENSE THE USE OF THE DESIGN OR TECHNICAL INFORMATION SHOWN HEREIN. REPRODUCTION OF THIS PRINT OR ANY INFORMATION CONTAINED HEREIN, OR MANUFACTURE OF ANY ARTICLE HEREFROM, FOR THE DISCLOSURE TO OTHERS IS FORBIDDEN, EXCEPT BY SPECIFIC WRITTEN PERMISSION FROM NYLOPLAST.

DRAWN BY	EBC	MATERIAL
DATE	4-3-06	
REVISED BY	EBC	PROJECT NO./NAME
DATE	3-10-10	
DWG SIZE	A	SCALE 1:30 SHEET 1 OF 1

Nyloplast
 3130 VERONA AVE
 BUFORD, GA 30518
 PHN (770) 932-2443
 FAX (770) 932-2490
 www.nyloplast-us.com

TITLE
 18 IN DRAIN BASIN QUICK SPEC INSTALLATION DETAIL
 DWG NO. 7001-110-191 REV C

NYLOPLAST 24" DRAIN BASIN: 2824AG __X



GRATE OPTIONS	LOAD RATING	PART #	DRAWING #
PEDESTRIAN	MEETS H-10	2499GCP	7001-110-216
STANDARD	MEETS H-20	2499GCS	7001-110-217
SOLID COVER	MEETS H-20	2499GCG	7001-110-218
DOME	N/A	2499GCD	7001-110-219
DROP IN GRATE	LIGHT DUTY	2401DI	7001-110-075

THIS PRINT DISCLOSES SUBJECT MATTER IN WHICH NYLOPLAST HAS PROPRIETARY RIGHTS. THE RECEIPT OR POSSESSION OF THIS PRINT DOES NOT CONFER, TRANSFER, OR LICENSE THE USE OF THE DESIGN OR TECHNICAL INFORMATION SHOWN HEREIN. REPRODUCTION OF THIS PRINT OR ANY INFORMATION CONTAINED HEREIN, OR MANUFACTURE OF ANY ARTICLE HEREFROM, FOR THE DISCLOSURE TO OTHERS IS FORBIDDEN, EXCEPT BY SPECIFIC WRITTEN PERMISSION FROM NYLOPLAST.

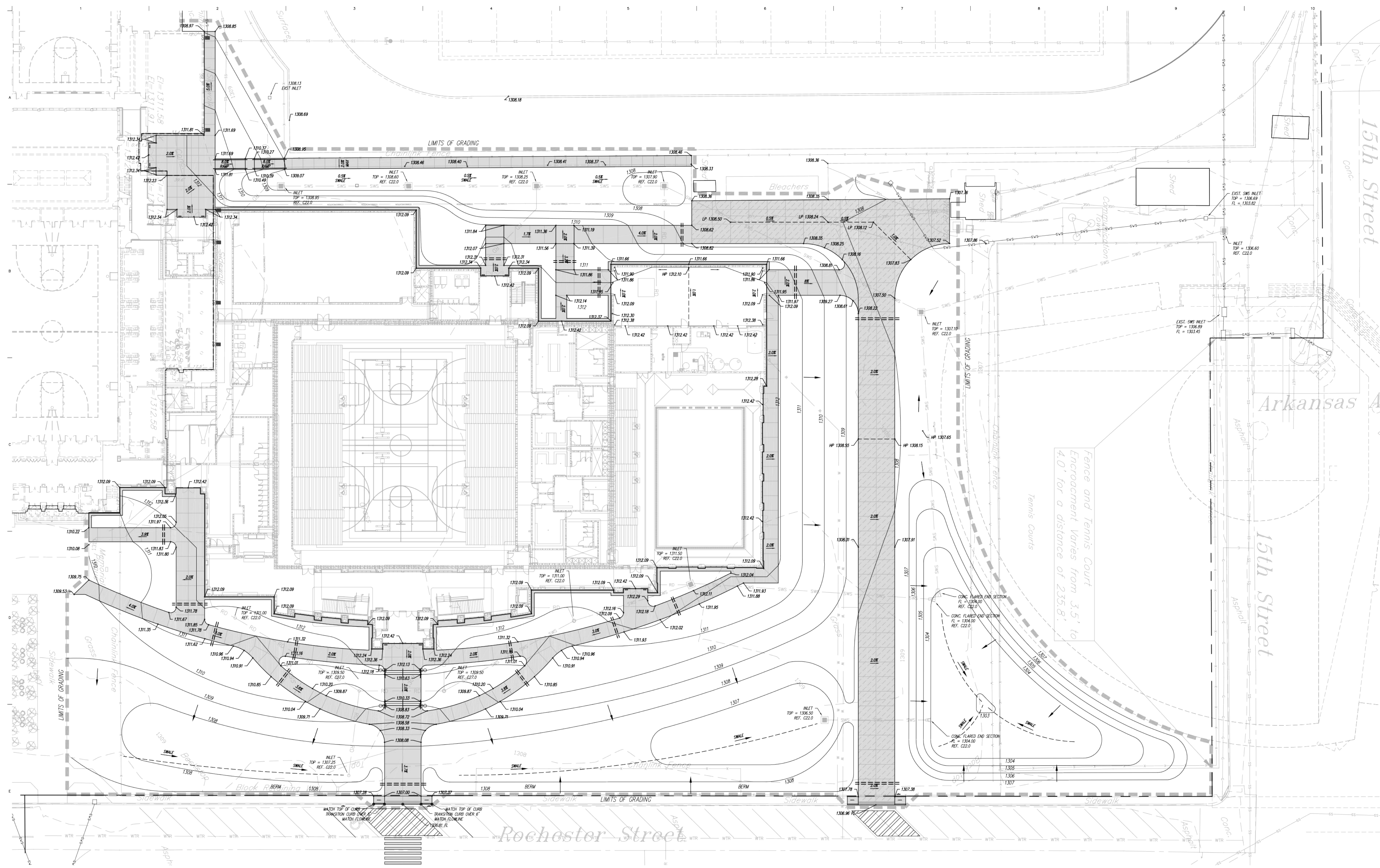
DRAWN BY	EBC	MATERIAL
DATE	4-3-06	
REVISED BY	EBC	PROJECT NO./NAME
DATE	3-11-10	
DWG SIZE	A	SCALE 1:40 SHEET 1 OF 1

Nyloplast
 3130 VERONA AVE
 BUFORD, GA 30518
 PHN (770) 932-2443
 FAX (770) 932-2490
 www.nyloplast-us.com

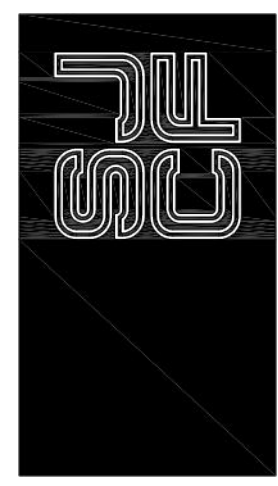
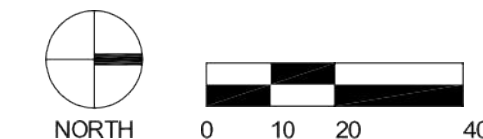
TITLE
 24 IN DRAIN BASIN QUICK SPEC INSTALLATION DETAIL
 DWG NO. 7001-110-192 REV C

Baughman USD 259 North High School
ADS Drain Inlet Detail
 Wichita, Kansas

PROJECT NUMBER: 0058 PPD 607853
 DESIGN: PSB
 DRAWN: TNT
 APPROVED: PSB
 DATE: 11/16/11
 SCALE: varies
 SHEET: 9 OF 12



(A) GRADING PLAN
1" = 20'-0"



SCHAEFER JOHNSON CDX FREY ARCHITECTURE
 207 N. Broadway
 Wichita, KS 67202-2317
 P: 316.264.0011
 F: 316.264.0015
 www.sjf.com
 admin@sjf.com

**100% PROPOSED DRAWINGS
NOT FOR CONSTRUCTION**

BAUGHMAN COMPANY, P.E.
 CIVIL ENGINEERS
 SURVEYORS
 TERRACON CONSULTANTS, INC.
 GEOTECHNICAL ENGINEERS

**USD 259
WICHITA HIGH SCHOOL NORTH**
 BID NO. 11-25054
 1347 ROCHESTER STREET
 WICHITA, KS 67203

Revisions

1	
2	
3	
4	
5	
6	
7	
8	
9	
10	

Project Number
SJCF 5039.00

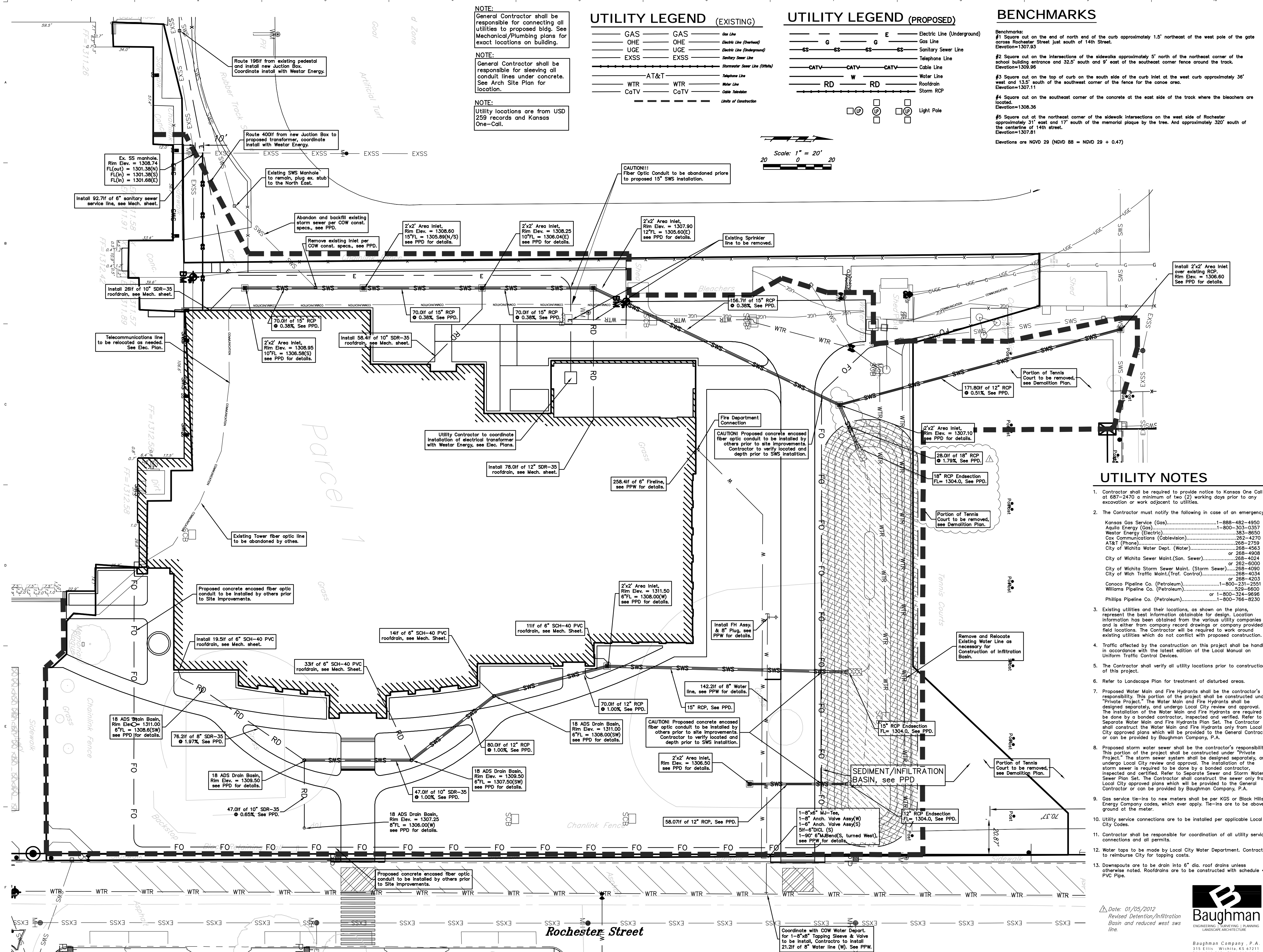
Date
4 OCTOBER 2011

GRADING PLAN
1" = 20'-0"
C21.2

Private Drainage Improvements

For Reference Only
See City Approved
Plans for Const.

		USD 259 North High School Grading Plan Wichita, Kansas	
Baughman Company, P.A. 315 S. 5th St. Wichita, KS 67211 P: 316.260.7271 F: 316.260.0190 ENGINEERING SURVEYING PLANNING LANDSCAPE ARCHITECTURE			
PROJECT NUMBER 0058 PPD 607853	DESIGN PSB	DRAWN TNT	
APPROVED PSB	DATE 11/16/2011	SCALE varies	
REVISIONS:			
			10 OF 12



NOTE:
General Contractor shall be responsible for connecting all utilities to proposed bldg. See Mechanical/Plumbing plans for exact locations on building.

NOTE:
General Contractor shall be responsible for sleeving all conduit lines under concrete. See Arch Site Plan for location.

NOTE:
Utility locations are from USD 259 records and Kansas One-Call.

UTILITY LEGEND (EXISTING)

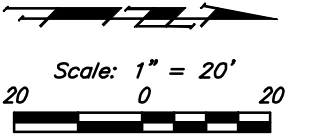
GAS	GAS	One Line
OHE	OHE	Electric Line (Overhead)
UGE	UGE	Electric Line (Underground)
EXSS	EXSS	Sanitary Sewer Line
SSS	SSS	Storm Sewer Line (Open)
WTR	WTR	Water Line
CaTV	CaTV	Cable Television

UTILITY LEGEND (PROPOSED)

G	E	Electric Line (Underground)
CS	CS	Sanitary Sewer Line
CATV	CATV	Cable Line
RD	RD	Water Line
RD	RD	Roofdrain
RD	RD	Storm RCP

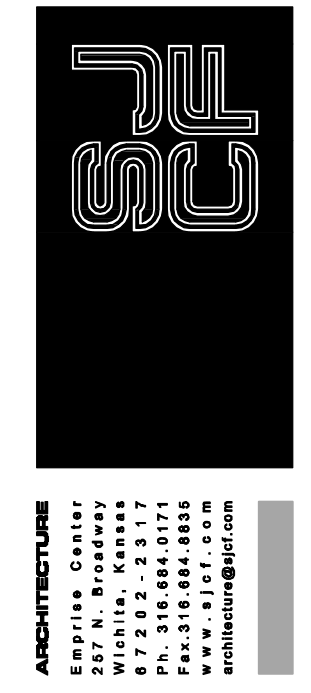
BENCHMARKS

- Benchmarks:
 #1 Square cut on the end of north end of the curb approximately 1.5' northeast of the west pole of the gate across Rochester Street just south of 14th Street. Elevation: 1307.93
 #2 Square cut on the intersections of the sidewalks approximately 5' north of the northeast corner of the school building entrance and 32.5' south and 9' east of the southeast corner fence around the track. Elevation: 1308.96
 #3 Square cut on the top of curb on the south side of the curb inlet at the west curb approximately 35' west and 13.5' south of the southwest corner of the fence for the canoe area. Elevation: 1307.11
 #4 Square cut on the southeast corner of the concrete at the east side of the track where the bleachers are located. Elevation: 1308.36
 #5 Square cut at the northeast corner of the sidewalk intersections on the west side of Rochester approximately 31' east and 17' south of the memorial plaque by the tree. And approximately 320' south of the centerline of 14th street. Elevation: 1307.81
 Elevations are NOV2 29 (NOV2 88 = NOV2 29 + 0.47)



UTILITY NOTES

- Contractor shall be required to provide notice to Kansas One Call at 687-2470 a minimum of two (2) working days prior to any excavation or work adjacent to utilities.
- The Contractor must notify the following in case of an emergency:
 Kansas Gas Service (Gas).....1-888-482-4950
 Aquila Energy (Gas).....1-800-303-3537
 Westar Energy (Electric).....383-8650
 Cox Communications (Cablevision).....262-4270
 AT&T (Phone).....268-2759
 City of Wichita Water Dept. (Water).....268-4563
 or 268-4908
 City of Wichita Sewer Maint.(San. Sewer).....265-4024
 or 262-6006
 City of Wichita Storm Sewer Maint. (Storm Sewer).....268-4050
 City of Wich Traffic Maint.(Trsf. Control).....268-4034
 Conoco Pipeline Co. (Petroleum).....1-800-231-2551
 Williams Pipeline Co. (Petroleum).....529-6600
 or 1-800-324-8698
 Phillips Pipeline Co. (Petroleum).....1-800-766-8230
- Existing utilities and their locations, as shown on the plans, represent the best information obtainable for design. Location information has been obtained from the various utility companies and is either from company record drawings or company provided field locations. The Contractor will be required to work around existing utilities which do not conflict with proposed construction.
- Traffic affected by the construction on this project shall be handled in accordance with the latest edition of the Local Manual on Uniform Traffic Control Devices.
- The Contractor shall verify all utility locations prior to construction of this project.
- Refer to Landscape Plan for treatment of disturbed areas.
- Proposed Water Main and Fire Hydrants shall be the contractor's responsibility. This portion of the project shall be constructed under "Private Project." The Water Main and Fire Hydrants shall be designed separately, and undergo Local City review and approval. The installation of the Water Main and Fire Hydrants are required to be done by a bonded contractor, inspected and verified. Refer to Separate Water Main and Fire Hydrants Plan Set. The Contractor shall construct the Water Main and Fire Hydrants only from Local City approved plans which will be provided to the General Contractor or can be provided by Baughman Company, P.A.
- Proposed storm water sewer shall be the contractor's responsibility. This portion of the project shall be constructed under "Private Project." The storm sewer system shall be designed separately, and undergo Local City review and approval. The installation of the storm sewer is required to be done by a bonded contractor, inspected and certified. Refer to Separate Sewer and Storm Sewer Plan Set. The Contractor shall construct the sewer only from Local City approved plans which will be provided to the General Contractor or can be provided by Baughman Company, P.A.
- Gas service tie-ins to new meters shall be per KGS or Black Hills Energy Company codes, which ever apply. Tie-ins are to be above ground if the meter.
- Utility service connections are to be installed per applicable Local City Codes.
- Contractor shall be responsible for coordination of all utility service connections and all permits.
- Water taps to be made by Local City Water Department. Contractor to reimburse City for tapping costs.
- Downspouts are to be drain into 6" dia. roof drains unless otherwise noted. Roofdrains are to be constructed with schedule 40 PVC Pipe.



SCHAEFER JOHNSON COX FREY
 ARCHITECTURE
 1001 W. 10TH ST.
 WICHITA, KANSAS
 PA. 316.848.8777
 FAX 316.848.8885
 www.sjcf.com

BAUGHMAN COMPANY
 CIVIL ENGINEERS
 K.E. MILLER ENGINEERING, INC.
 SURVEY
 TERRACON CONSULTANTS, INC.
 GEOTECHNICAL ENGINEER

USD 259
 NEW HIGH SCHOOL NORTH
 BID NO. 11-25054
 1501 ROCHESTER STREET
 WICHITA, KANSAS 67202

Private Drainage Improvements

For Reference Only
 See City Approved
 Plans for Const.

	USD 259 North High School Erosion Control Wichita, Kansas
	Baughman Company, P.A. 315 Elm St. Wichita, KS 67211 P.316.262.7271 F.316.262.0184 ENGINEERING SURVEYING PLANNING LANDSCAPE ARCHITECTURE
PROJECT NUMBER 0058 PPD 607853	DESIGN PSB DRAWN TNT
REVISIONS:	APPROVED DATE PSB 11/16/2011
SCALE varies SHEET	11 OF 12

