

MH 6047-225  
Approx MH depth = 11.6 ft

Point Repair: Remove and replace approx 103 lf of 8" pipe, from Manhole 6047-224 to 103 lf northwest of Manhole 6047-224. The repair shall include the tap replacement for 232 Bonnie Brae.

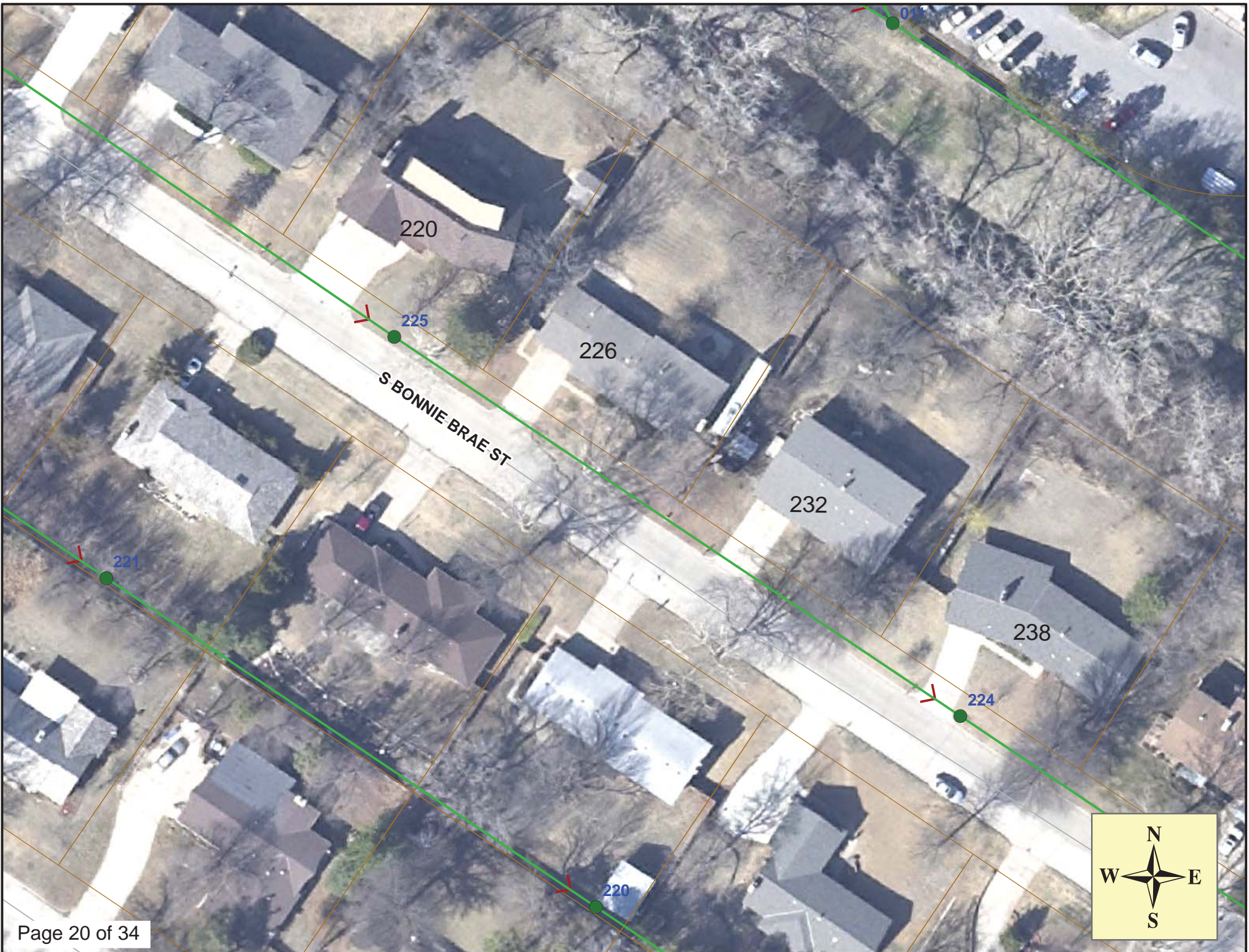
The water main is located on the opposite side of the street.  
There is a large tree in the yard of 232 Bonnie Brae, at approx. 12 ft east of the curb line.  
Cost to reset a mail box shall be subsidiary to the project.

Remove and replace 17 lf of concrete drive approach (this will include approx 17' x 14' of approach) (4 existing panels)  
Install 17 lf of Flowable Fill

MH 6047-224  
Approx MH depth = 12.0 ft  
Construct an Outside Drop on the existing brick manhole. (includes reshaping the manhole bench/invert to accommodate proper flow through the manhole)

Estimated 95 sy Erosion Control Mat  
Estimated 80 lf Back of Curb Protection

**SITE 5**



## Video Inspection Master Report

5/31/2013

2:01 PM

US Structure: 6047-225                      220 S BONNIE BRAE ST                      Date Insp: 2/10/2010                      Basin: E01G2  
 DS Structure: 6047-224                      238 S BONNIE BRAE ST                      Dir Televised: Upstream To Downstream

**Pipe Information**

Project No. : G-164                      Dia/Ht: 8                      Material: VCP                      Length: 315.0

Obs. #	VTR Counter	Distance	Location	Description	Rating	Obsrvd (gpm)	Ratings			Remain (gpm)
							Est. (gpm)	Struct	Clean	
1		0.0		6047-225 US Manhole	1					
2		0.0		Broken Pipe	2	0.008	44	0	0.008	
3		21.8	220 S BONNIE BRAE	Wye Service	1	0.000	0	0	0.000	
4		47.0		Crack-Horizontal	2	0.002	2	0	0.002	
5		52.9		Crack-Horizontal	3	0.004	5	0	0.004	
6		55.6		Broken Pipe	2	0.008	44	0	0.008	
7		58.6		Crack-Horizontal	3	0.004	5	0	0.004	
8		79.5		Crack-Horizontal	2	0.002	2	0	0.002	
9		95.8		Broken Pipe	2	0.008	44	0	0.008	
10		97.3		Broken Pipe	2	0.008	44	0	0.008	
11		100.5		Crack-Radial	3	0.004	5	0	0.004	
12		103.1		Broken Pipe	2	0.008	44	0	0.008	
13		109.2		Broken Pipe	2	0.008	44	0	0.008	
14		112.2		Broken Pipe	2	0.008	44	0	0.008	
15		115.4	226 S BONNIE BRAE	Break-In Conn	1	0.001	0	0	0.001	
16		116.6		Crack-Horizontal	2	0.002	2	0	0.002	
17		118.1		Crack-Horizontal	1	0.001	1	0	0.001	
18		128.4		Sealed Off Wye	1	0.000	0	0	0.000	
19		129.9		Broken Pipe	2	0.008	44	0	0.008	
20		133.0		Crack-Horizontal	2	0.002	2	0	0.002	
21		138.9		Broken Pipe	3	0.010	60	0	0.010	
22		144.7		Broken Pipe	3	0.010	60	0	0.010	
23		147.8		Crack-Horizontal	2	0.002	2	0	0.002	
24		162.3		Crack-Radial	2	0.002	2	0	0.002	
25		171.5		Crack-Horizontal	2	0.002	2	0	0.002	
26		174.1		Broken Pipe	2	0.008	44	0	0.008	
27		214.1		Broken Pipe	2	0.008	44	0	0.008	
28		215.8	232 S BONNIE BRAE	Break-In Conn	4	0.008	60	0	0.008	
Cavity outside of the main, at service. Pipe missing around the tap. Pipe cracked both sides of the tap. -LML										
29		219.2	Invert shifted – pipe sticking up	Sag	2	0.000	2	0	0.000	
30		219.7		Crack-Horizontal	2	0.002	2	0	0.002	
31		226.1		Sag	1	0.000	1	0	0.000	
32		226.1		Sag	1	0.000	1	0	0.000	
33		221.3		Sag	4	0.000	10	0	0.000	
34		230.3		Sag	2	0.000	2	0	0.000	

## Video Inspection Master Report

5/31/2013

2:01 PM

**US Structure:** 6047-225                      **220 S BONNIE BRAE ST**                      **Date Insp:** 2/10/2010                      **Basin:** E01G2  
**DS Structure:** 6047-224                      **238 S BONNIE BRAE ST**                      **Dir Televised:** Upstream To Downstream

35	233.1		Sag	3	0.000	5	0	0.000
36	236.2		Sag	1	0.000	1	0	0.000
37	236.3		Sag	1	0.000	1	0	0.000
38	242.4		Crack-Horizontal	1	0.001	1	0	0.001
39	246.5		Sealed Off Wye	1	0.000	0	0	0.000
40	248.5	Broken pipe in invert / shifted pipe sticking up		3	0.010	60	0	0.010
41	248.2	Camera Blocked		5	0.000	0	0	0.000

Shifted pipe in invert. Pipe in very poor condition and cannot be lined. -LML

**REVERSE SETUP:**

Obs. #	VTR Counter	Distance	Location	Description	Rating	Obsrvd (gpm)	Ratings			Remain (gpm)
							Est. (gpm)	Struct	Clean	
1		0.0	TV AGAINST THE FLOW	DS Manhole	6047-224					
2		0.0		Crack-Horizontal	2	0.002	2	0	0.002	
3		23.5		Sag	2	0.000	2	0	0.000	
4		25.2		Sag	4	0.000	10	0	0.000	
5		32.1		Sag	1	0.000	1	0	0.000	
6		32.1		Sag	1	0.000	1	0	0.000	
16		33.5		Broken Pipe	2	0.008	44	0	0.008	
15		43.6		Crack-Horizontal	2	0.002	2	0	0.002	
11		46.6		Broken Pipe	3	0.010	60	0	0.010	
14		49.5		Broken Pipe	3	0.010	60	0	0.010	
9		53.1		Crack-Horizontal	3	0.004	5	0	0.004	
7		55.5		Broken Pipe	4	0.030	78	0	0.030	
8		55.5		Stopped Inspection	5	0.000	0	0	0.000	

Pipe is out of round and camera cannot pass. Pipe is shifted. -LML  
Incomplete televising -LML

**Need to replace the downstream 103 lf of pipe. From the downstream manhole, to and including the tap for 232 Bonnie Brae.**