

Waco Ave.

15th Street North

18" VCP SS

216 W.
15th St. N.

116' 6" VCP

MH 5449-501
Approx MH depth = 3.1 ft

1601 N Fairview

Caution: 8" PVC water main
(located below the sanitary sewer)

Caution: 10" VCP storm water main
(located just below the sanitary sewer)

225 W.
15th St. N.

219 W.
15th St. N.

1557 N Fairview

MH 5449-500
Remove Manhole
Construct Shallow Manhole
Approx MH depth = 3.9 ft

Fairview Ave.

331' 10" VCP

1521 N Fairview

Remove 98 lf of 6" Pipe
Install 98 lf of 8" Pipe
(from MH 5449-501 to MH 5449-500)

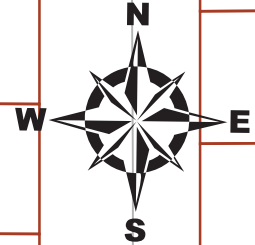
Remove & replace approx
50 lf of Pavement (incl curb/gutter)

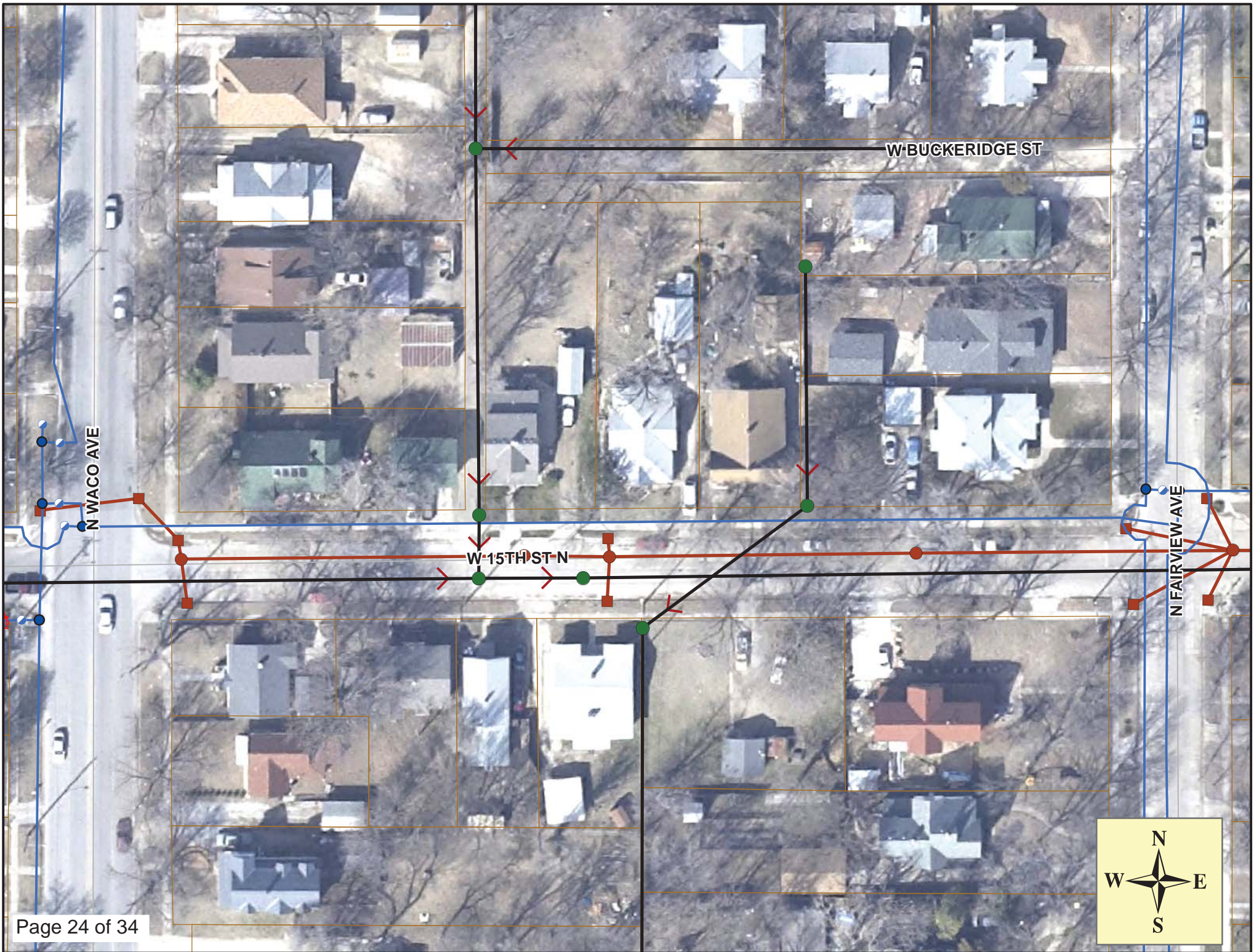
Remove 20 lf of Reinforced Concrete Encasement (6" pipe)
Install 20 lf of Reinforced Concrete Encasement (8" pipe)
(at water line crossing)

Install 90 lf of Fill Sand (flushed & vibrated) (approx.)

The cost to remove and replace concrete sidewalks (both sides of the street) and a portion of the concrete approach for 216 W. 15th Street North shall be subsidiary to the project. Contractor may follow the same diagonal patch for the prior concrete replacement that was done when the sanitary sewer was encased.

SITE 6





Video Inspection Master Report

1/30/2013

9:23 AM

US Structure: 5449-501 216 W 15TH ST N Date Insp: 12/2/2010 Basin: C03D
 DS Structure: 5449-500 219 W 15TH ST N Dir Televised: Upstream To Downstream

Pipe Information

Shape: Round Project No. : A-091
 Dia/Ht: 6" Material: VCP
 Length: 98.0 Slope: 0.200

Obs. #	VTR Counter	Distance	Location	Description	Rating	Obsrvd (gpm)	Ratings			Remain (gpm)
							Est. (gpm)	Struct	Clean	
1		0.0	5449-501	US Manhole	1					
2		3.0		Crack-Radial	5	0.010	18	0	0.010	
3		11.4		Crack-Radial	1	0.001	1	0	0.001	
4		13.9		Crack-Radial	3	0.004	5	0	0.004	
5		15.5		Roots	1	0.002	1	1	0.002	
6		17.3		Roots	2	0.004	2	4	0.004	
7		19.7		Roots	2	0.004	2	4	0.004	
8		21.8		Roots	2	0.004	2	4	0.004	
9		23.6		Roots	2	0.004	2	4	0.004	
10		25.9		Roots	2	0.004	2	4	0.004	
11		28.0		Roots	3	0.008	5	8	0.008	
12		32.0		Roots	3	0.008	5	8	0.008	
13		32.4		Crack-Radial	3	0.004	5	0	0.004	
14		34.0		Roots	4	0.010	10	25	0.010	
15		36.1		Roots	2	0.004	2	4	0.004	
16		37.5		Roots	2	0.004	2	4	0.004	
17		46.2		Roots	1	0.002	1	1	0.002	
18		46.2		Scaling	2	0.000	2	0	0.000	
19		50.6		Crack-Radial	3	0.004	5	0	0.004	
20		52.6		Crack-Radial	3	0.004	5	0	0.004	
21		54.6		Crack-Radial	2	0.002	2	0	0.002	
22		58.7		Crack-Radial	3	0.004	5	0	0.004	
23		60.8		Crack-Radial	2	0.002	2	0	0.002	
24		70.9		Roots	1	0.002	1	1	0.002	
25		85.5		Roots	2	0.004	2	4	0.004	
26		87.5		Crack-Radial	3	0.004	5	0	0.004	
27		98.6	5449-500	DS Manhole	1					Manhole in very poor condition -LML

No taps. Sewer Maintenance staff took site elevation shots to determine that the sanitary sewer is located above the storm sewer. -LML

The pipe crossing 15th Street is 6" in diameter. The pipe going south out of MH 5449-500 is shown as 10" diameter in the record books. Contractor should verify that pipe diameter before reconstructing MH 5449-500. MH 5449-500 used to have a pipe coming in from the northwest but that was abandoned when the flow was redirected to the east/west sewer. -LML