

MH 5449-376
Approx MH depth = 4.7 ft

MH 5449-377
Approx MH depth = 5.5 ft

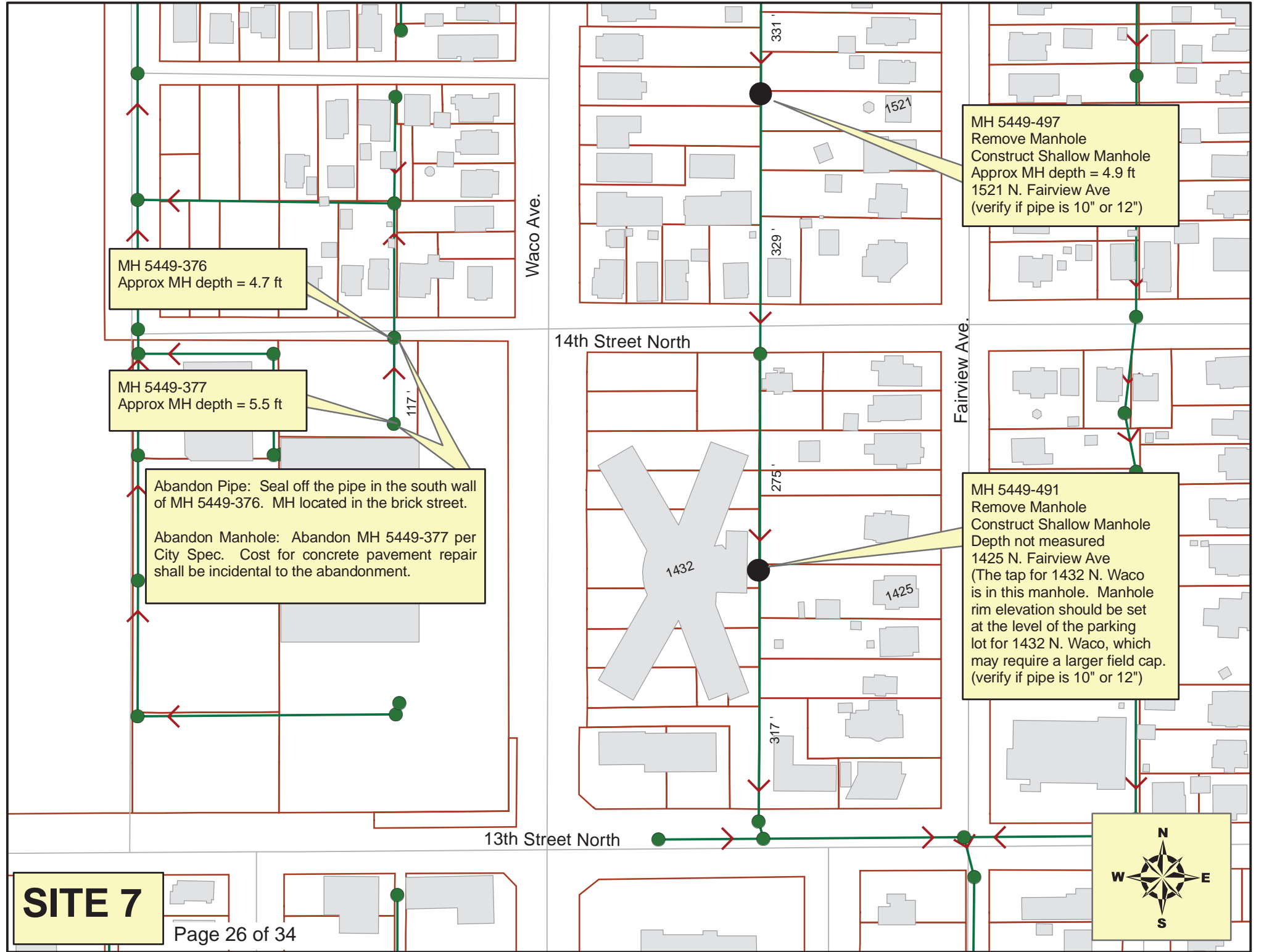
Abandon Pipe: Seal off the pipe in the south wall of MH 5449-376. MH located in the brick street.

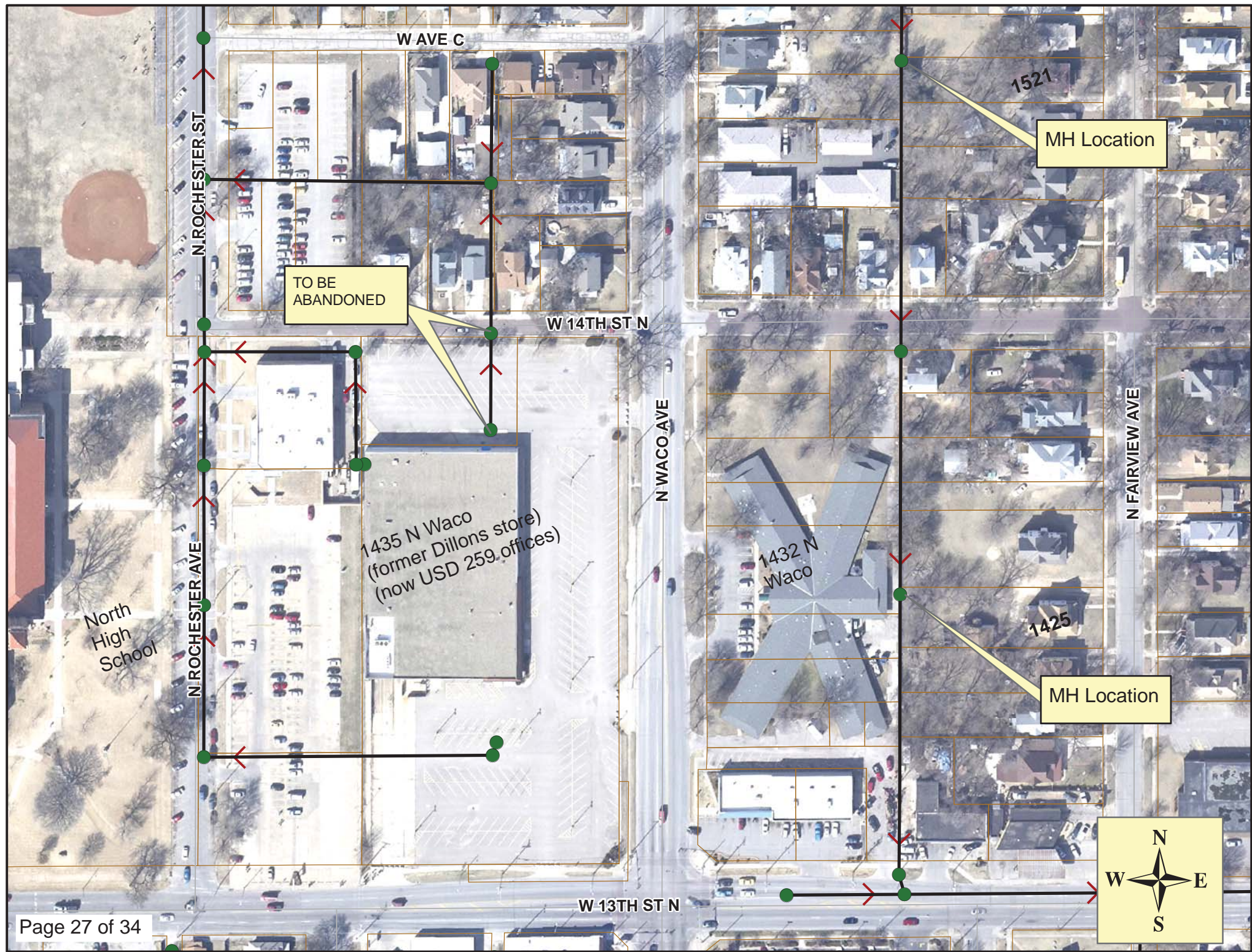
Abandon Manhole: Abandon MH 5449-377 per City Spec. Cost for concrete pavement repair shall be incidental to the abandonment.

MH 5449-497
Remove Manhole
Construct Shallow Manhole
Approx MH depth = 4.9 ft
1521 N. Fairview Ave
(verify if pipe is 10" or 12")

MH 5449-491
Remove Manhole
Construct Shallow Manhole
Depth not measured
1425 N. Fairview Ave
(The tap for 1432 N. Waco is in this manhole. Manhole rim elevation should be set at the level of the parking lot for 1432 N. Waco, which may require a larger field cap. (verify if pipe is 10" or 12")

SITE 7





TO BE
ABANDONED

MH Location

MH Location



Video Inspection Master Report

3/4/2013

8:57 AM

US Structure: 5449-377 1435 N WACO ST Date Insp: 12/13/2011 Basin: C03F
 DS Structure: 5449-376 424 W 14TH ST N Dir Televised: Upstream To Downstream

Pipe Information

Shape: Round Project No. : D-069
 Dia/Ht: 8 Material: VCP
 Length: 117 Slope: 0.102

Obs. #	VTR Counter	Distance	Location	Description	Rating	Obsrvd (gpm)	Ratings			Remain (gpm)
							Est. (gpm)	Struct	Clean	
1		0.0		5449-377 US Manhole	1					
2		15.4		Wye Service	1	0.000	0	0	0.000	
3		19.1		Crack-Radial	3	0.004	5	0	0.004	
4		39.0		Wye Service	1	0.000	0	0	0.000	
5		42.6		Crack-Radial	2	0.002	2	0	0.002	
6		43.9	Lets dirt into main	Wye Service	2	0.000	0	0	0.000	
7		62.4	not sealed at main	Wye Service	3	0.000	2	0	0.000	
8		86.2		Broken Pipe	2	0.008	44	0	0.008	
9		89.3		Crack-Radial	2	0.002	2	0	0.002	
10		90.1	cavity outside of main Not sealed at main / old rough clay tap	Break-In Conn	4	0.008	60	0	0.008	
11		101.9	Joint	Offset	3	0.010	20	0	0.010	
12		117.5	5449-376 (in brick street)	DS Manhole	1					

No live taps. There is water standing in the main from 90 ft to 116 ft. -LML

Sewer Maintenance has determined this line is not in use. The line needs to be abandoned to eliminate dirt and water from entering through old taps & wye connections that are not sealed at the main. -LML