

CONSTRUCTION PLANS FOR WATER DISTRIBUTION SYSTEM IMPROVEMENTS

CITY OF WICHITA PROJECT NO. 488-90600

OCA #735491

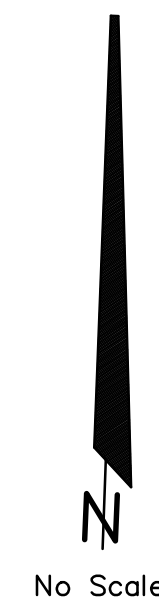
TO SERVE

NORTHBOROUGH ADDITION THE CITY OF WICHITA, KANSAS

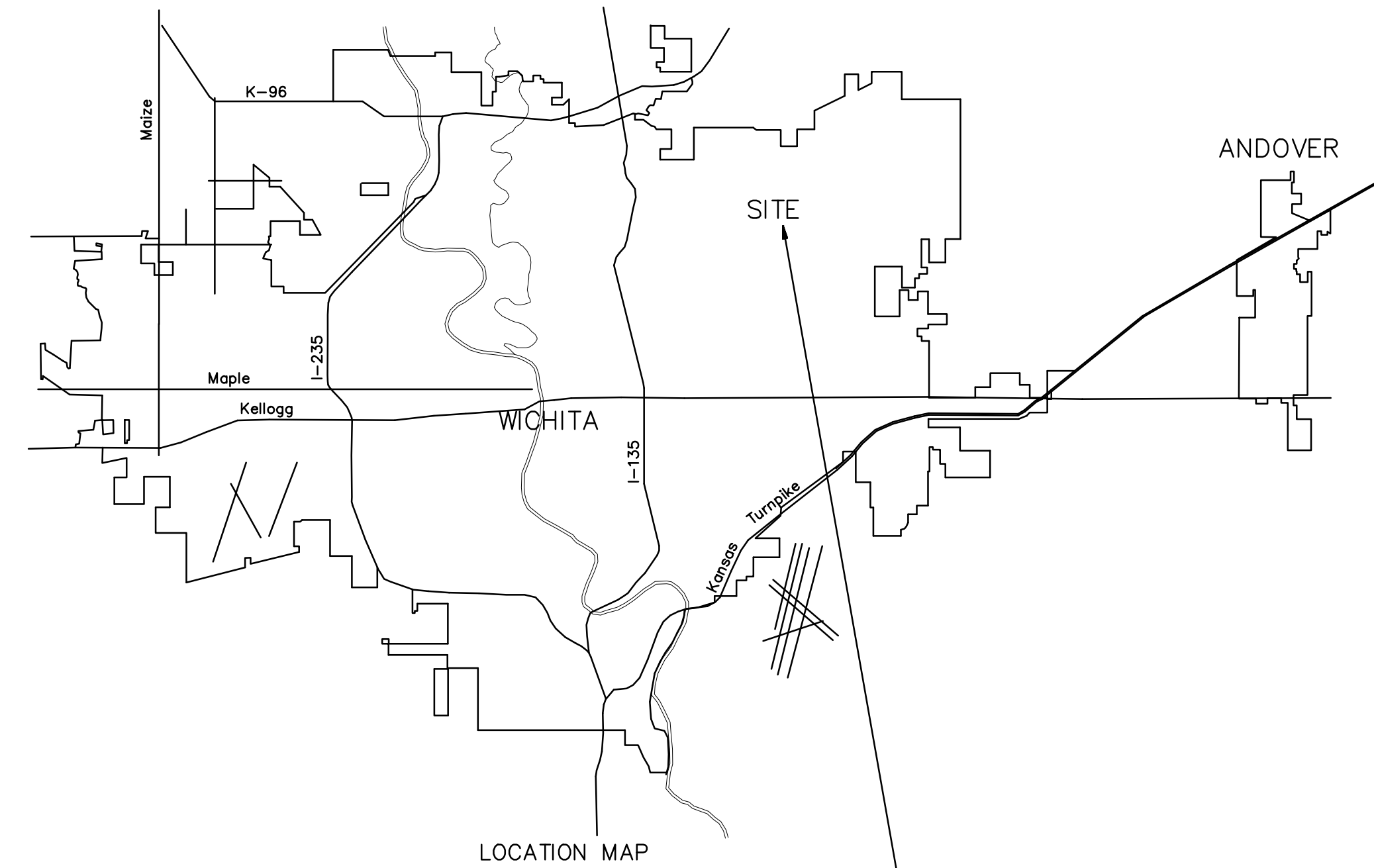
SEDGWICK COUNTY, KANSAS

GARY JANZEN, P.E. CITY ENGINEER

No.	Date	By	Approved	Revision



No Scale

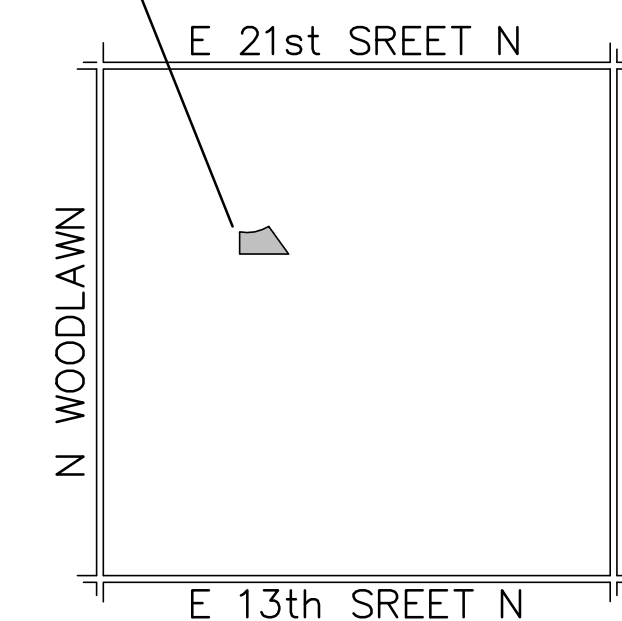


LOCATION MAP

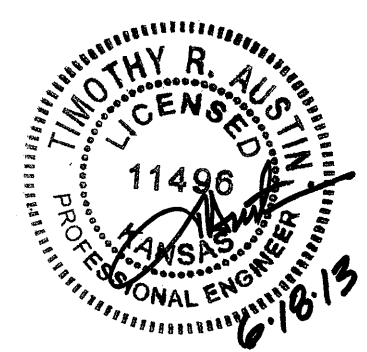
INDEX OF SHEETS

SHEET NO. 1	TITLE SHEET
SHEET NO. 2	KEY MAP
SHEET NO. 3	STANDARD DETAILS
SHEET NO. 4	PLAN PROFILE
SHEET NO. 5-9	BMP'S
SHEET NO. 10	SWPPP/COORDINATE POINTS LIST
SHEET NO. 11	PLAT

PROJECT SITE



LOCATION MAP
No Scale



JUNE 2013

PLANS PREPARED BY



POE & ASSOCIATES, INC.
CONSULTING ENGINEERS
5940 E. Central, Suite 200 ■ Wichita, KS 67208-4242
Phone 316/685-4114 ■ FAX 316/685-4444