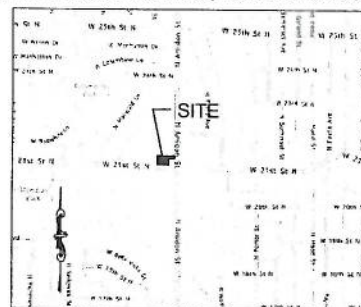


MH 3 MOVED 5FT. TO THE WEST

# PRIVATE PROJECT PUBLIC SANITARY SEWER RELOCATION PLAN TO SERVE

## CVS/pharmacy

CITY OF WICHITA PROJECT #2139 PPS (607861)  
 CS#64720 STORE#10159 NWC 21ST AND AMIDON AVE.  
 WICHITA, KS  
 PART OF LOT I, BLOCK A, SWEETBRIAR ADDITION  
 ZONED: LC LIMITED COMMERCIAL  
 TAX ID#I23060340102500, I23060340102600



VICINITY MAP NOT TO SCALE

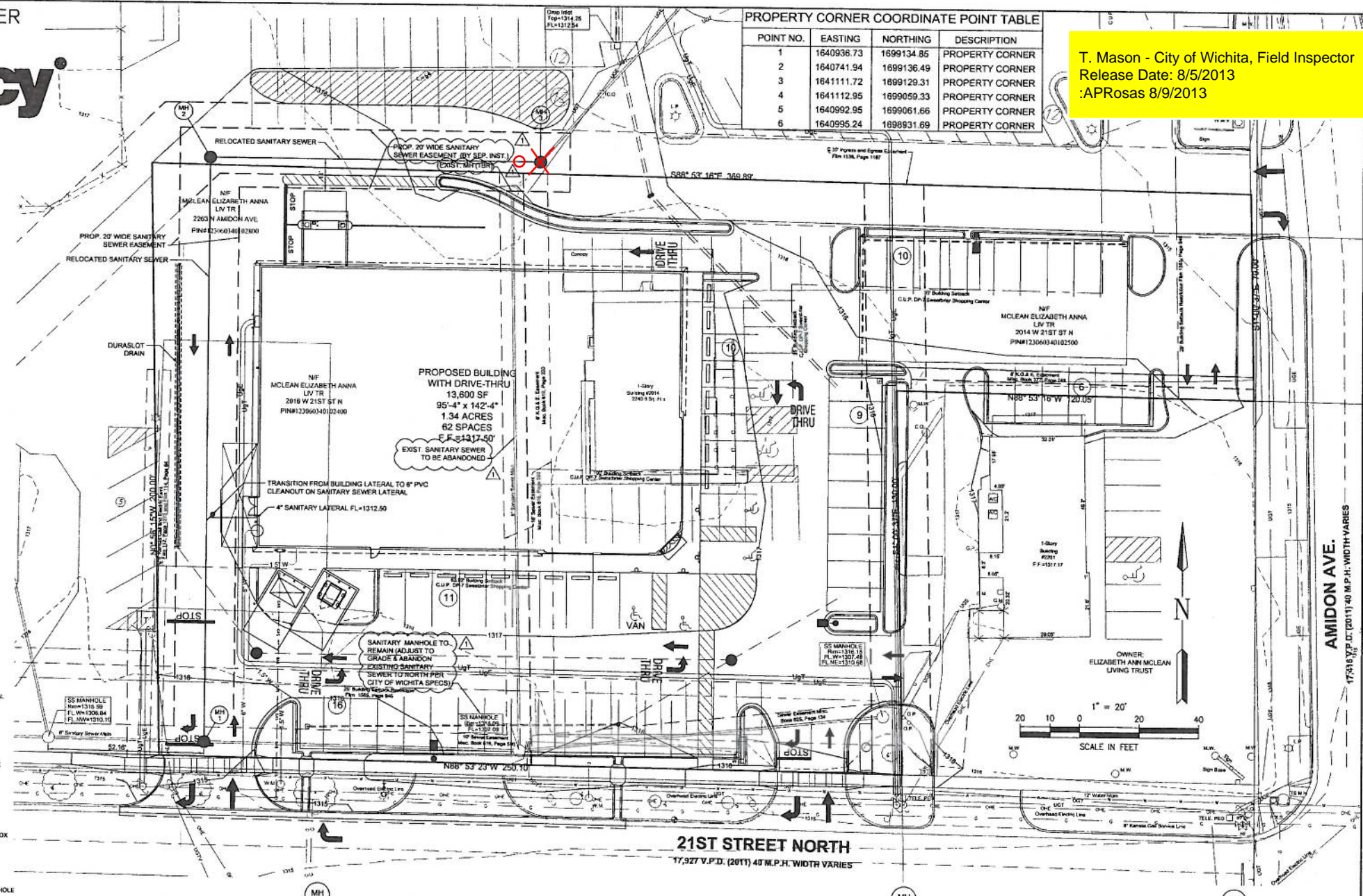
### SHEET INDEX

- C-3E SANITARY PLAN/PROFILE
- C-9 SANITARY DETAILS

PROPERTY CORNER COORDINATE POINT TABLE

POINT NO.	EASTING	NORTHING	DESCRIPTION
1	1640936.73	1699134.85	PROPERTY CORNER
2	1640741.94	1699136.49	PROPERTY CORNER
3	1641111.72	1699129.31	PROPERTY CORNER
4	1641112.95	1699059.33	PROPERTY CORNER
5	1640992.95	1699061.66	PROPERTY CORNER
6	1640995.24	1698931.69	PROPERTY CORNER

T. Mason - City of Wichita, Field Inspector  
 Release Date: 8/5/2013  
 :APRosas 8/9/2013



- PROJECT DIRECTORY**
- CVS REALTY, CO. CHICAGO, IL 60609
  - DEVELOPER: VILVER COMPANIES
  - ARCHITECT: NORR ARCHITECTS ENGINEERS PLANNERS
  - CIVIL ENGINEER: PREMIER CIVIL ENGINEERING, LLC
  - CONTRACTOR: CK CONTRACTING
  - INSPECTOR: DAKOTA ZIMMERMAN RUGGLES 7 BOHM, P.A.

- UTILITY PROVIDERS**
- WESTAR ENERGY
  - KANSAS GAS SERVICE
  - CITY OF WICHITA WATER UTILITIES

- EXIST. UTILITY SYMBOL LEGEND**
- G - GAS MAIN
  - W - WATER MAIN
  - SS - SANITARY SEWER
  - SWS - STORM WATER SEWER
  - UOE - UNDER GROUND ELECTRIC
  - UOT - UNDER GROUND TELEPHONE

**On Site Benchmarks:**  
 B.M. #1: Square Cut Top Curb 76" & 18" of the S.E. Corner of Lot 1, Block A, Sweetbriar Addition. Elevation = 1315.25 (NAVD88)  
 B.M. #2: Square Cut on Top of the Light Pole Base 90" E. & 34" N. of the N.W. Corner of Subject Property. Elevation = 1316.54 (NAVD88)

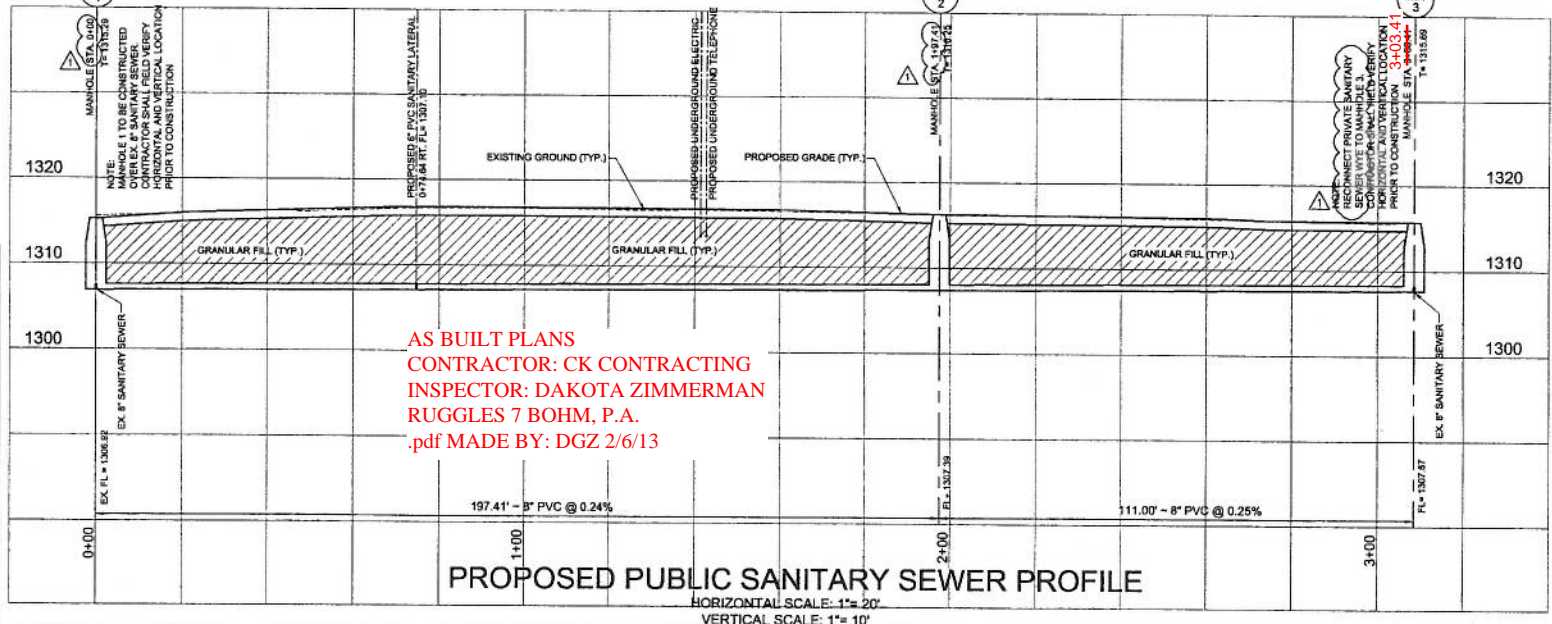
- SANITARY SEWER PROFILE NOTES**
- MH - DENOTES MANHOLE
  - ALL DIMENSIONS ARE TO THE CENTERLINE OF STRUCTURE, TO THE END OF FLARED END SECTION OR TO THE END OF PIPE AT EP'S.

THE CONTRACTOR SHALL VISIT THE SITE PRIOR TO SUBMITTAL OF HIS/HER BIDS TO CONFIRM THAT THE SITE CONDITIONS ARE AS SHOWN ON THESE PLANS. ANY CONDITION THAT IS DIFFERENT THAN WHAT IS SHOWN ON THESE PLANS SHALL BE BROUGHT TO THE ATTENTION OF THE ENGINEER PRIOR TO SUBMITTAL OF BIDS.

**TABLE OF PROPOSED SANITARY STRUCTURES**

Structure Number	Northing	Easting	Rim Elevation
MH 1	1699139.5123	1640951.6921	1315.29
MH 2	1699336.9234	1640952.8968	1316.25
MH 3	1699336.2457	1641063.8987	1315.69

APPROVED AS NOTED BY CITY ENGINEER OF WICHITA  
*Julianne Kallman*  
 NOTE TO CONTRACTORS 12-4-12  
 Inspection and testing for this project are to be provided by a Licensed Consulting Engineering Firm under contract with the Owner/Developer. Solid Inspection to be in accordance with the City of Wichita standard construction engineering practices and certified by a Licensed Professional Engineer. No work shall be performed in dedicated easements or public right-of-way by the Contractor without such inspection, nor shall any work be commenced without written authorization by the



AS BUILT PLANS  
 CONTRACTOR: CK CONTRACTING  
 INSPECTOR: DAKOTA ZIMMERMAN RUGGLES 7 BOHM, P.A.  
 .pdf MADE BY: DGZ 2/6/13

PROPOSED PUBLIC SANITARY SEWER PROFILE  
 HORIZONTAL SCALE: 1" = 20'  
 VERTICAL SCALE: 1" = 10'



DATE: 9/6/2012  
 PCE PROJECT NUMBER: 113301

**NOTE**  
 Underground utilities and structures have been plotted from available information and therefore, their location must be considered approximate only. It is the responsibility of the individual contractors to notify the utility companies before actual construction.

**ELECTRONIC DRAWING NOTE:**  
 ELECTRONIC MEDIA OR DIGITAL DRAWINGS ARE INSTRUMENT OF PROFESSIONAL SERVICES. OWNERSHIP OF SUCH WILL BE RETAINED BY THE CIVIL ENGINEER AND MAY NOT BE RELEASED TO CONTRACTORS. CONTRACTORS ARE ADVISED TO CREATE BIDS BASED ON THE USE OF PAPER COPIES OF THE PLANS.



NORTHERN 13,600 LEFT SIDE DRIVE-THRU  
 STORE NUMBER: 10159  
 NWC 21ST AND AMIDON AVE WICHITA, KS  
 PROJECT TYPE: NEW CONSTRUCTION  
 DEAL TYPE: Fee for Service/CL/Type B  
 CS PROJECT NUMBER: 064720



CONSULTANT:  
 PREMIER CIVIL ENGINEERING  
 308 TCW Court  
 Lake Saint Louis, MO 63367  
 Phone: (314) 925-7444 Fax: (314) 925-7457



DEVELOPER:  
 VELMEIR COMPANIES  
 ENGINEER'S SEAL AND SIGNATURE

REVISIONS:  
 A REWSED SHEET C-3E  
 11-26-12 RELOCATED Pylon SIGN

DRAWING BY: J.WURM  
 DATE: 09-06-12  
 JOB NUMBER: 113301  
 TITLE: PUBLIC SANITARY SEWER LINE RELOCATION  
 SHEET NUMBER: SHEET C-3E  
 COMMENTS: NOT APPROVED FOR CONSTRUCTION

