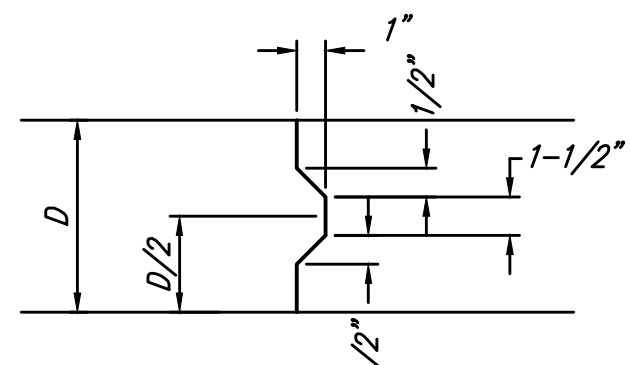
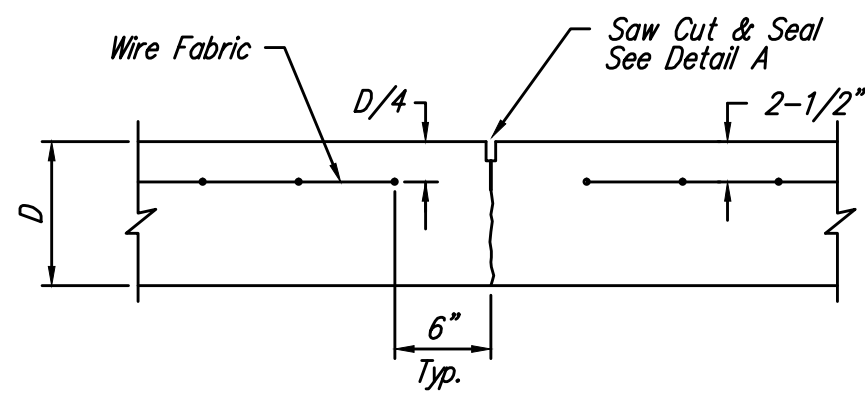


**EXPANSION JOINT**

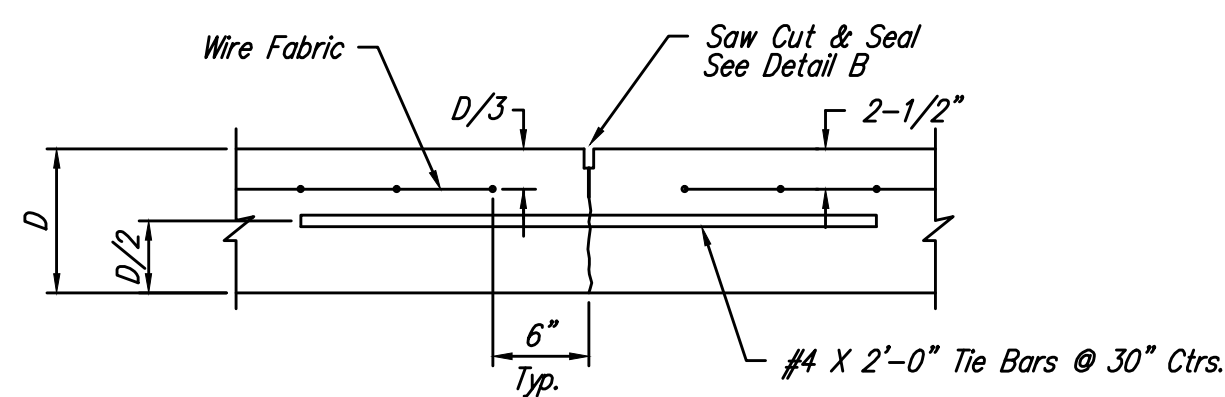
NOTE: Extra Thickness to be Subsidiary to Price of Square Yards Pavement



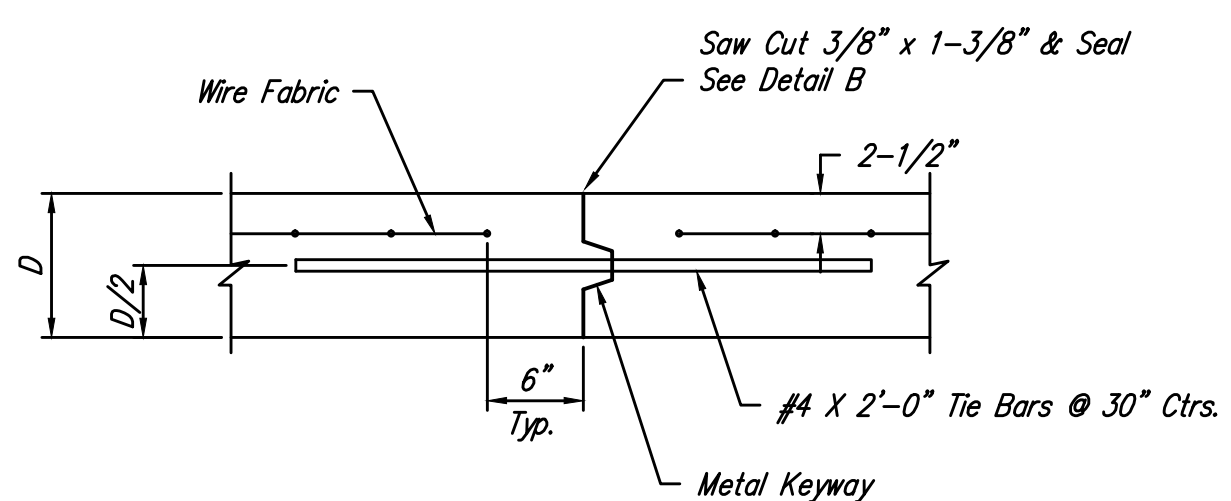
**KEYWAY DETAIL**



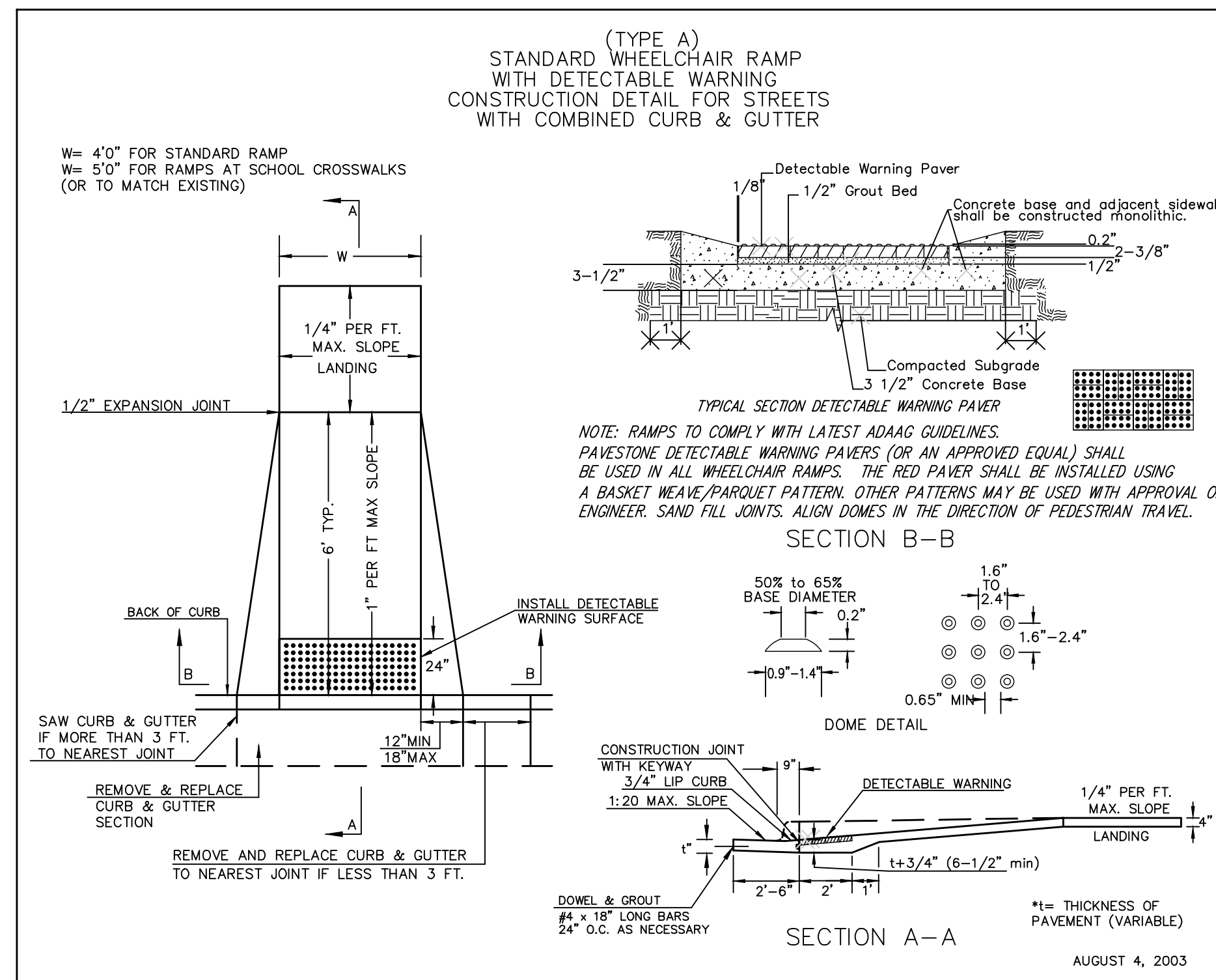
**CONTRACTION JOINT DETAIL (C.J.)**



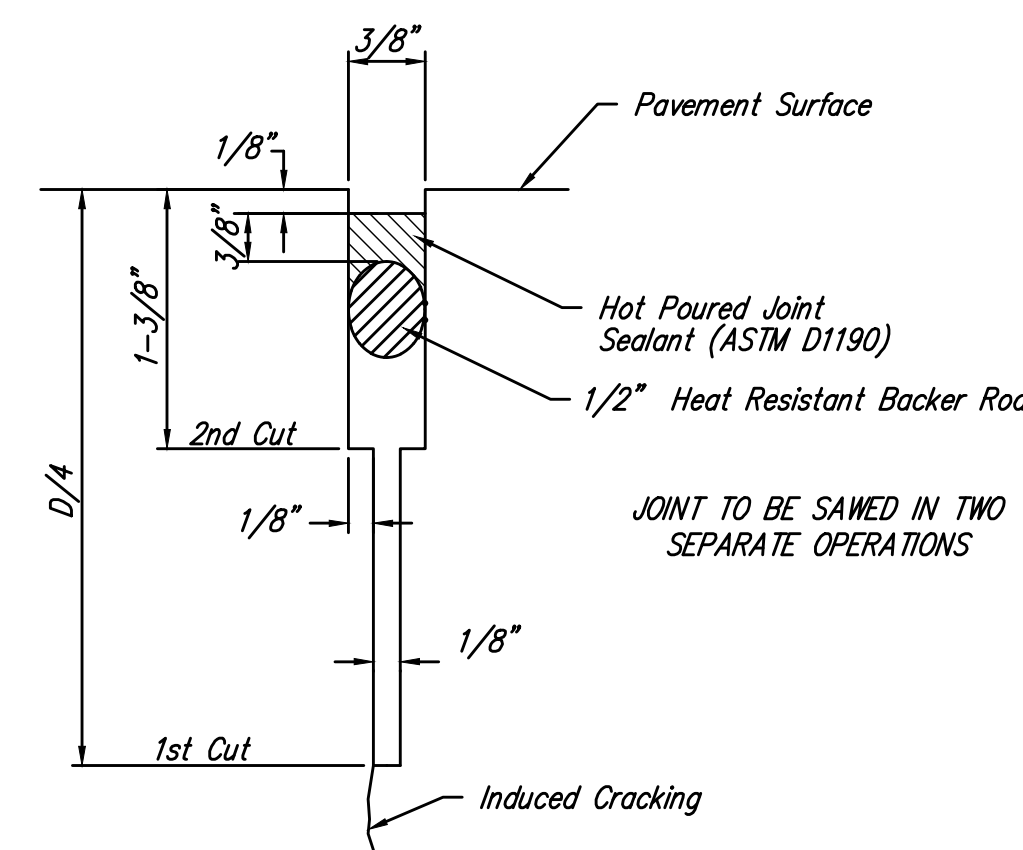
**LONGITUDINAL JOINT DETAIL (L.J.)**



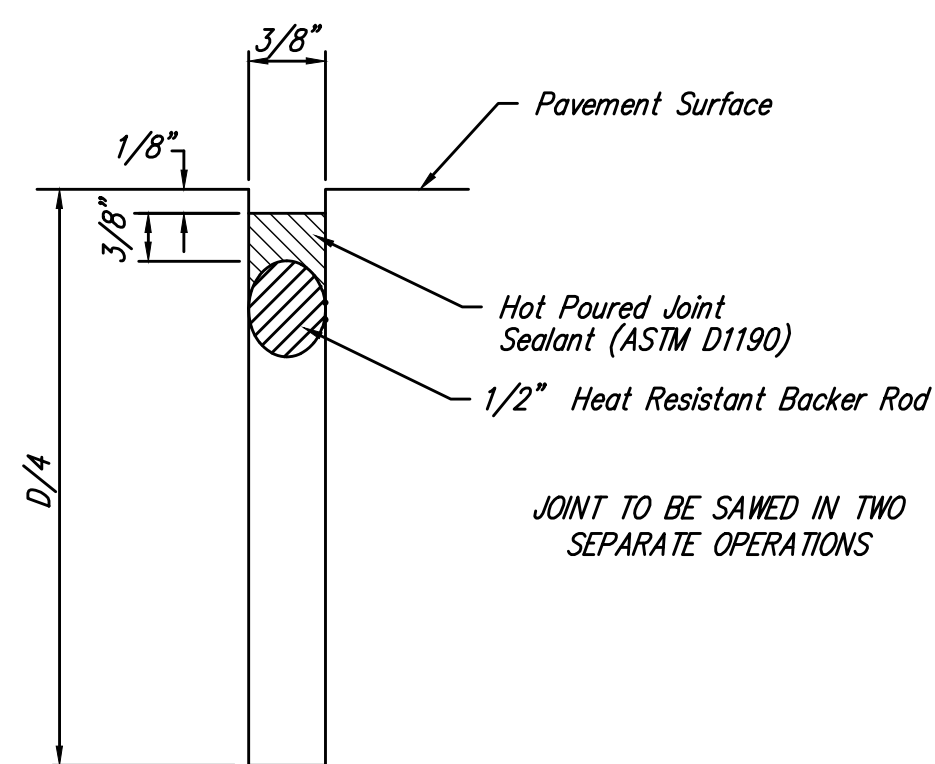
**OPTIONAL LONGITUDINAL JOINT DETAIL (L.J.) (CONSTRUCTION JOINT)**



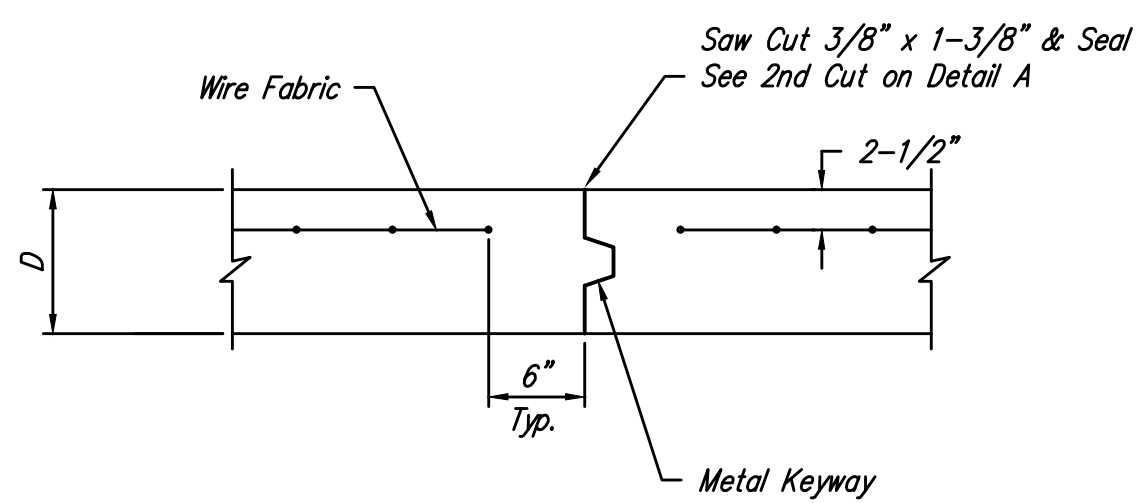
**WHEELCHAIR RAMP DETAIL**



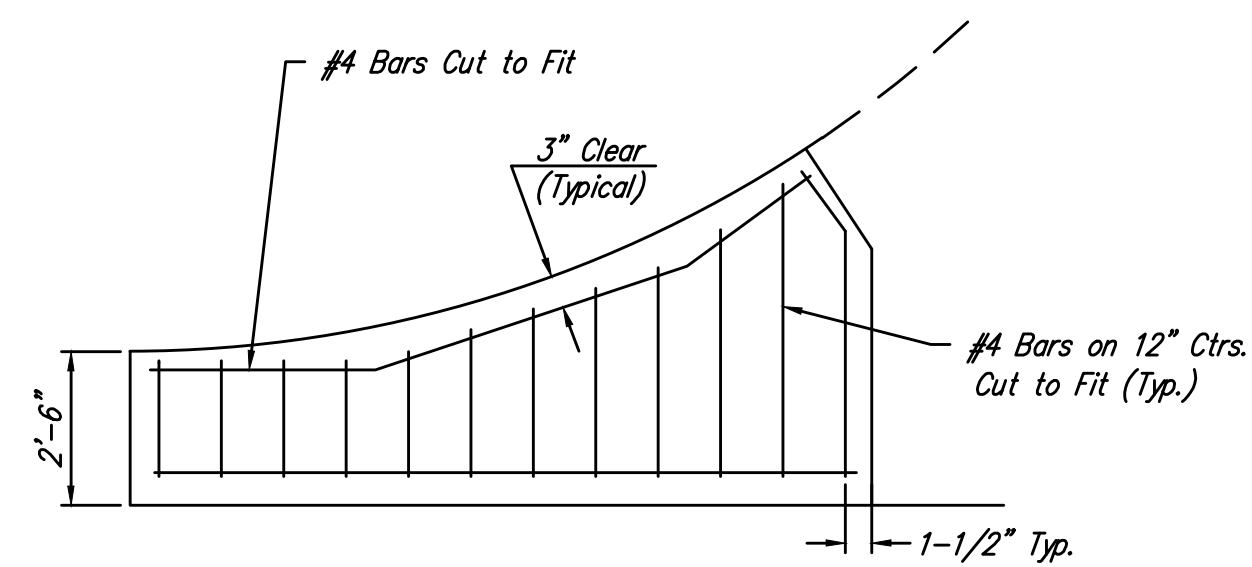
**SAW JOINT DETAIL "A"**



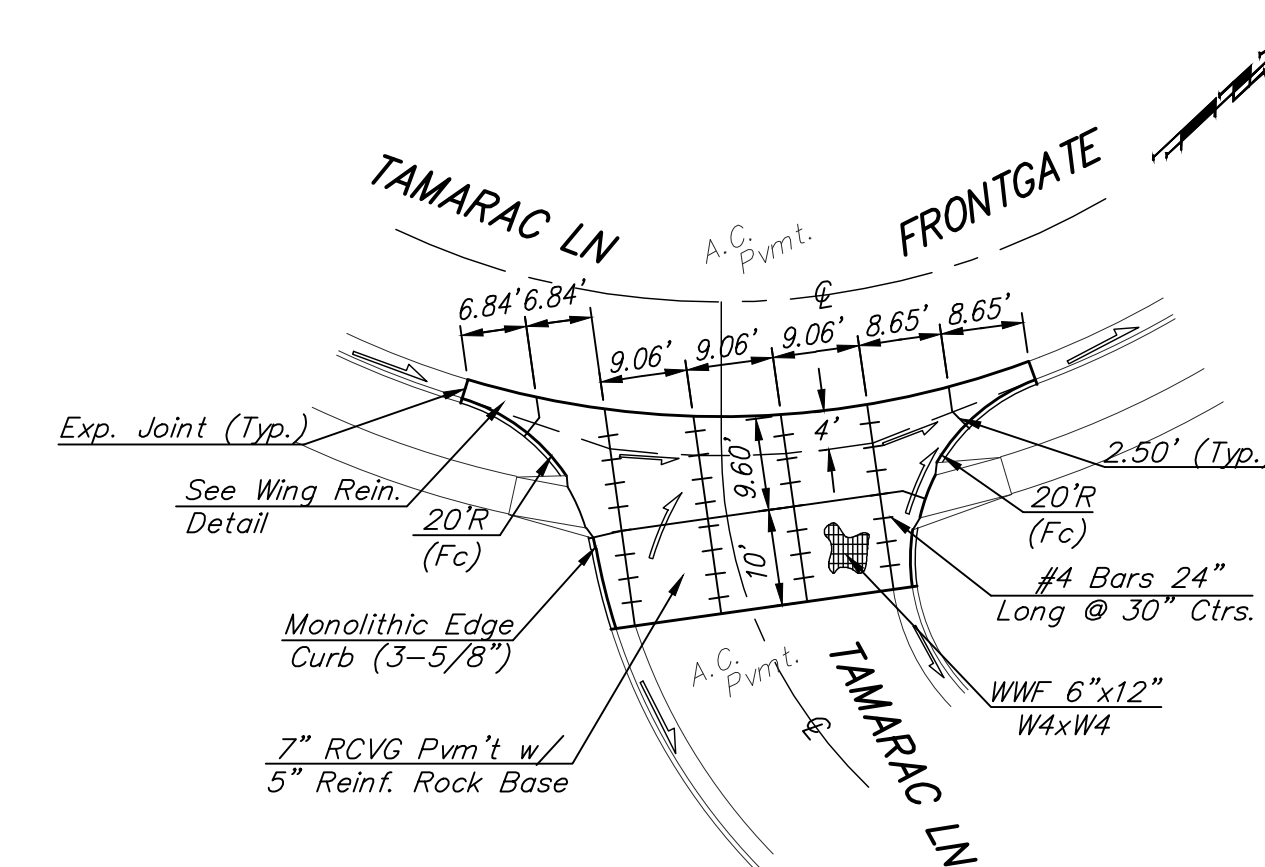
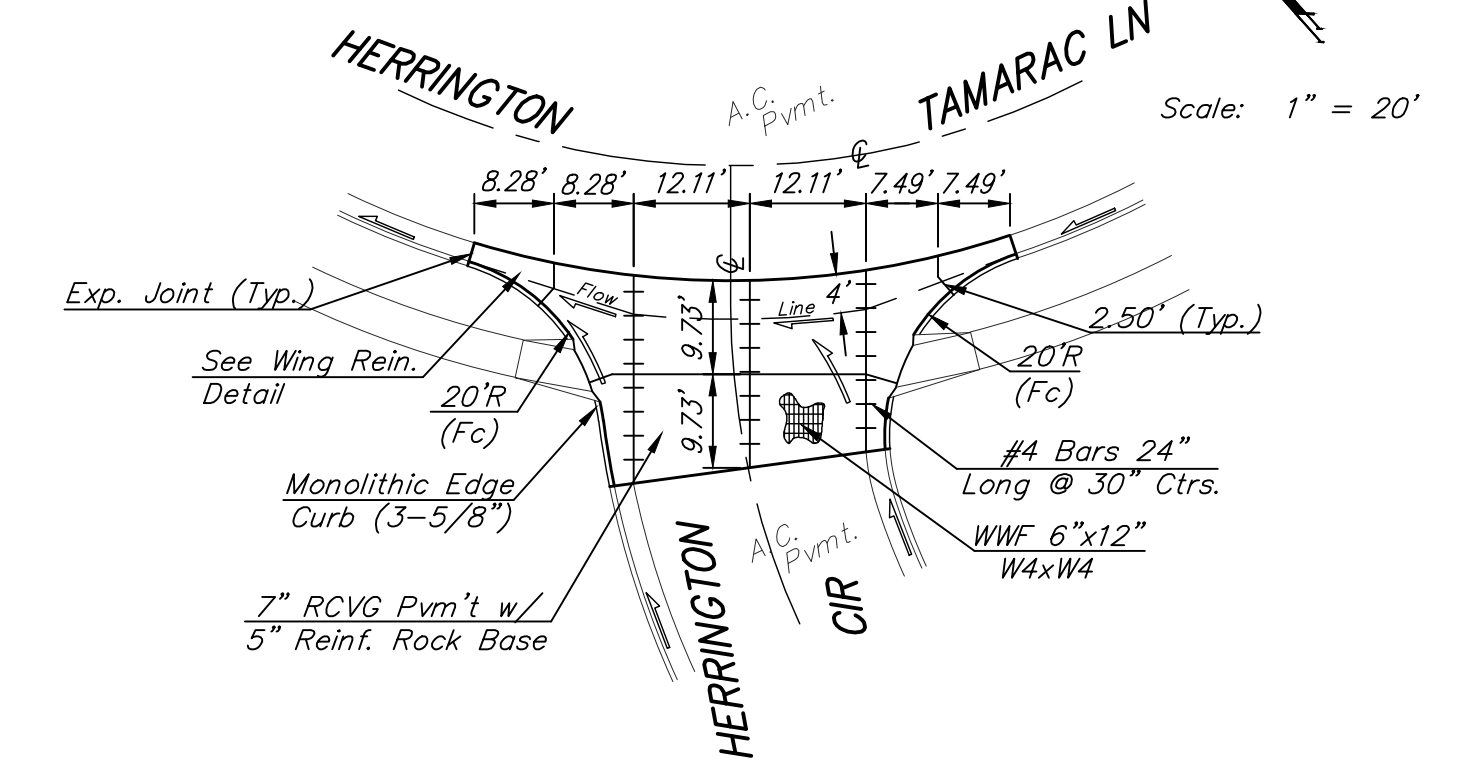
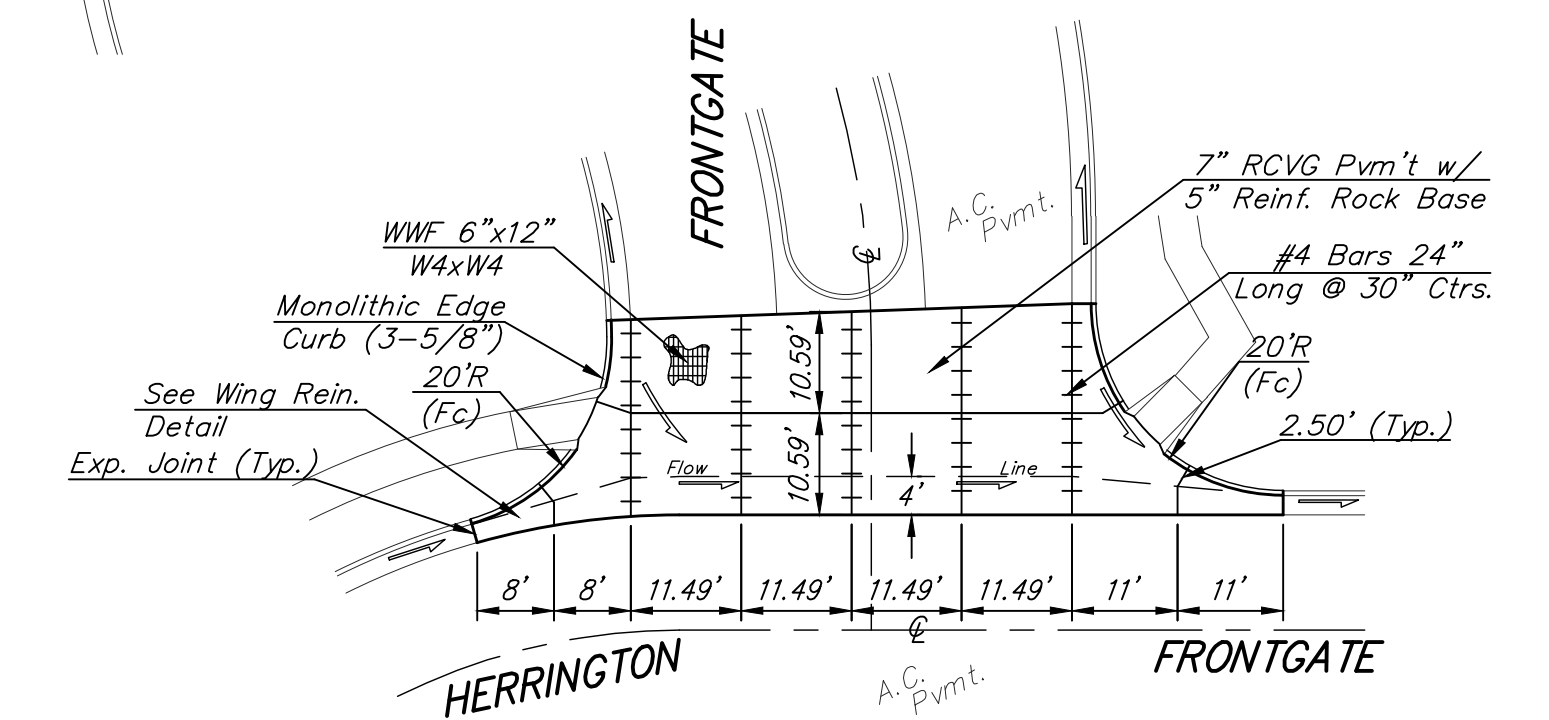
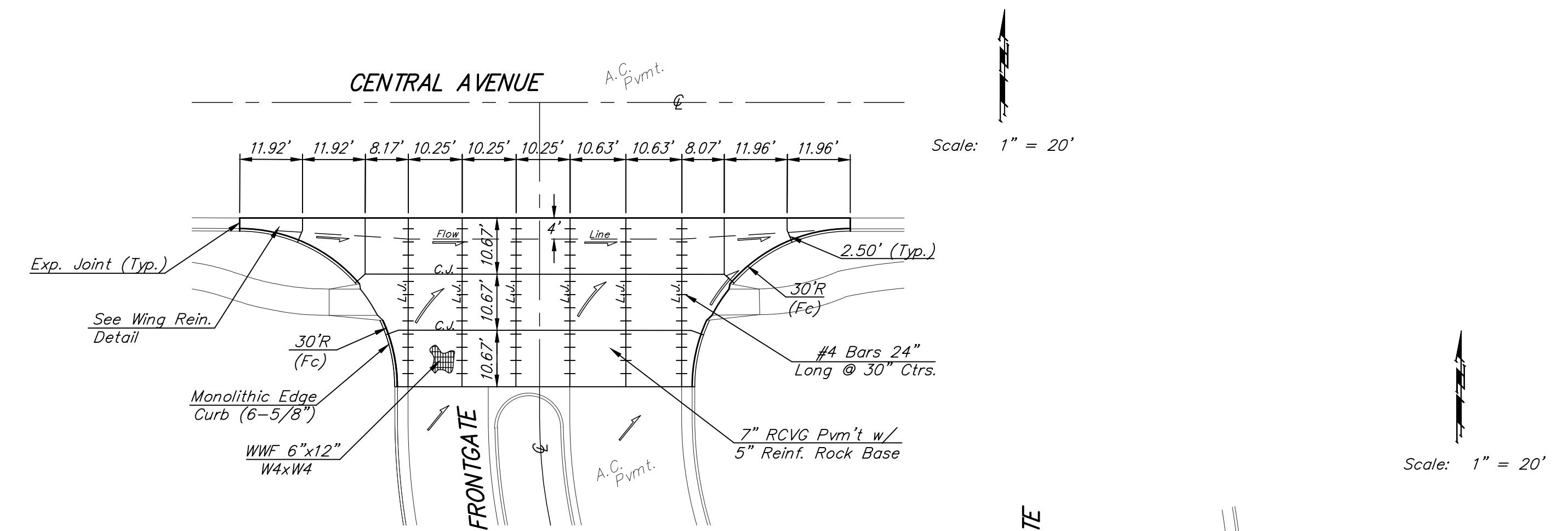
**SAW JOINT DETAIL "B"**



**OPTIONAL CONTRACTION JOINT (CONSTRUCTION JOINT)**



**WING REINFORCING DETAIL**



NOTE: 6" X 12" WAXW4 wire fabric reinforcing shall be placed so that the wires with the 6" spacing will run parallel with the longitudinal joints.

<b>B</b> Baughman		VALLEY GUTTER DETAILS	
Baughman Company, P.A. 315 Ellis St. Wichita, KS 67211 F 316-2621271 F 316-2621414 ENGINEERING   SURVEYING   PLANNING   LANDSCAPE ARCHITECTURE			
PROJECT NUMBER 472-85099	OCA NUMBER 766298	DESIGN STAFF	DRAWN STAFF
REVISIONS:		APPROVED	DATE
		SCALE NONE	7/23/13
		5 OF 26	
E:\Projects\Frontgate_1301P925\Engineering\Phase 1\Str_13402.E872\Sr.dwg			