

**BENCHMARKS:**

BM #1: CITY OF WICHITA DISC - WEST END OF CONCRETE HEADWALL OF REINFORCED CONCRETE BOX CULVERT, SOUTHEAST CORNER OF JACKSON HEIGHTS AND CENTRAL, 66.7' EAST & 11.6' NORTH OF THE NORTHEAST CORNER OF RESERVE "C", FRONTGATE ADDITION. ELEV. = 1349.46 NAVD88

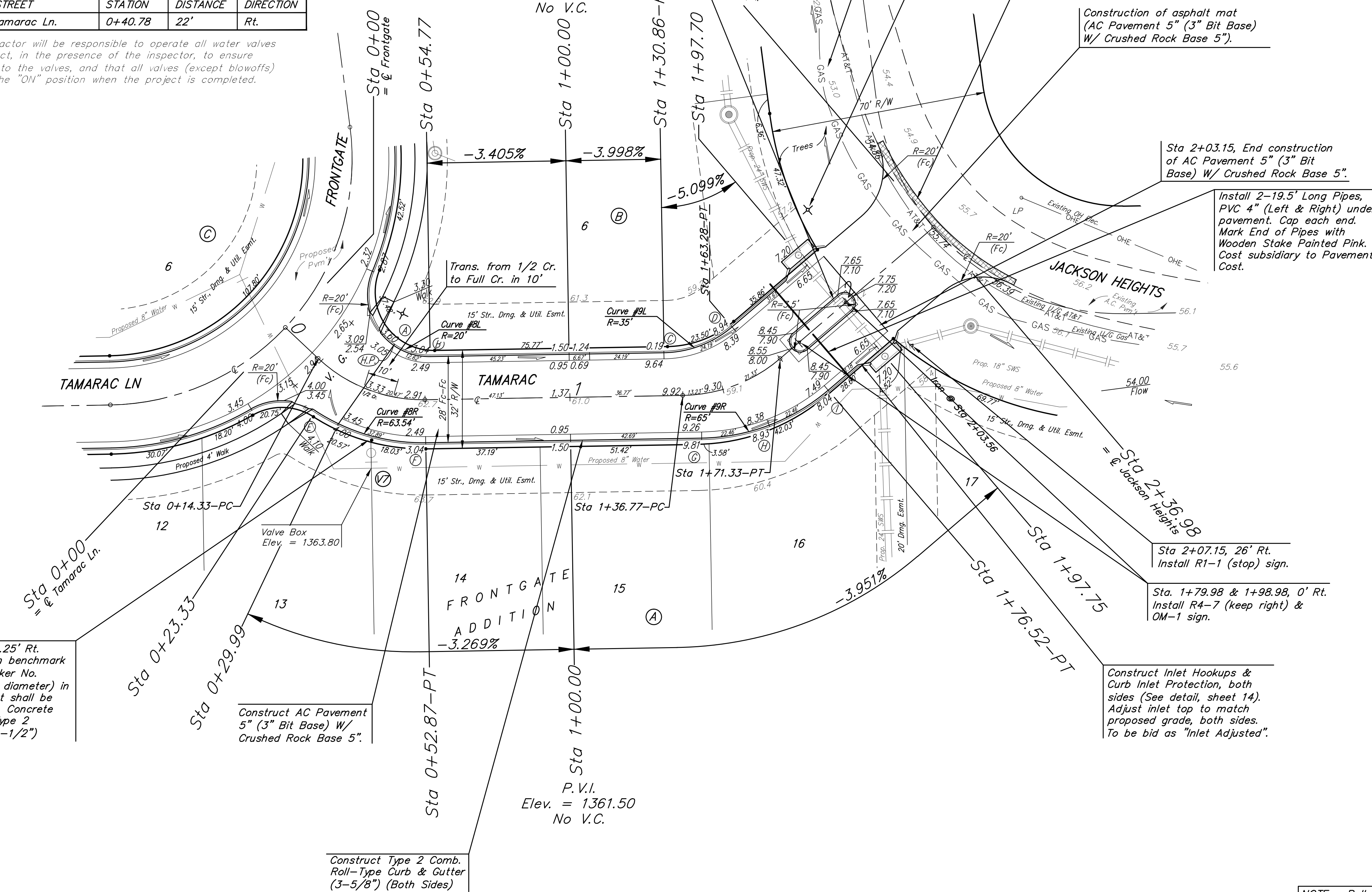
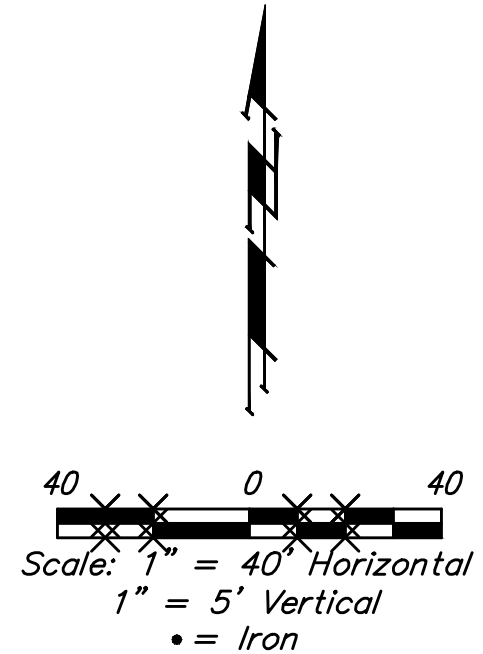
BM #2: SQUARE CUT ON TOP OF REINFORCED CONCRETE BOX CULVERT, 19.2' WEST & 24.7' NORTH OF THE NORTHWEST CORNER OF RESERVE "B", FRONTGATE ADDITION. ELEV. = 1351.80 NAVD88

**WATER VALVE LOCATION TABLE**

VALVE NUMBER	STREET	BASELINE STATION	OFFSET DISTANCE	OFFSET DIRECTION
V7	Tamarac Ln.	0+40.78	22'	Rt.

Paving contractor will be responsible to operate all water valves on the project, in the presence of the inspector, to ensure accessibility to the valves, and that all valves (except blowoffs) are left in the "ON" position when the project is completed.

Most trees in street R/W will be removed prior to construction with mass grading project. Any additional trees that are in conflict with street construction shall be removed by contractor. All other trees shall remain and be protected from damage during construction. Overhanging limbs shall be trimmed by the Contractor only as necessary for construction and with approval of the Engineer. Cost of tree trimming & removal to be included in bid item "Site Clearing"



Curve #8L  
Curve Data Based on Centerline  
Rad. = 20' Delta = 54°43'43" Tangent = 10.35'  
Arc = 13.03' L.C. = 18.39' Def./Ft. = 126.00601 Min.

Station	Arc	Chord Length	Defl.	Total Defl.
A	-	8' Left	0'00"00"	0'00"00"
B	13.03'	11.03'	27°21'52"	27°21'52"

Curve #8R  
Curve Data Based on Centerline  
Rad. = 63.54' Delta = 34°09'57" Tangent = 19.53'  
Arc = 37.89' L.C. = 37.33' Def./Ft. = 27.05133 Min.

Station	Arc	Chord Length	Defl.	Total Defl.
E	-	8' Right	0'00"00"	0'00"00"
F	-	42.03'	17°04'58"	17°04'58"

Curve #9R  
Curve Data Based on Centerline  
Rad. = 65' Delta = 39°35'42" Tangent = 23.40'  
Arc = 44.92' L.C. = 44.03' Def./Ft. = 26.44368 Min.

Station	Arc	Chord Length	Defl.	Total Defl.
G	-	8' Right	0'00"00"	0'00"00"
H	22.46'	25.10'	9°53'55"	9°53'55"
I	22.46'	25.10'	9°53'56"	19°47'51"

Curve #9L  
Curve Data Based on Centerline  
Rad. = 35' Delta = 39°35'42" Tangent = 12.60'  
Arc = 24.19' L.C. = 23.71' Def./Ft. = 49.10500 Min.

Station	Arc	Chord Length	Defl.	Total Defl.
C	-	8' Left	0'00"00"	0'00"00"
D	24.19'	18.29'	19°47'51"	19°47'51"

Subdivision Bench Marks

Street & Station	Location Description	Elevation
Tamarac Ln. 0+39.24, 14.25' Rt.	Adjacent to Fire Hydrant at intersection of Frontgate & Tamarac Ln. in front of Lots 13-14, Block A, Frontgate Add.	

NOTE: Roll Type Curb & Gutter (Type 2) to be constructed on the pavement shown on this sheet. Top of curb elevations are given for Full Height Curb (Type 4).

	FRONTGATE ADDITION	
	TAMARAC LN.	
STA 0+00 TO STA 2+36.98		
Baughman Company, P.A. 315 Ellis St. Wichita, KS 67211 P 316-262-2271 F 316-262-0149		
ENGINEERING   SURVEYING   PLANNING   LANDSCAPE ARCHITECTURE		
PROJECT NUMBER 47285099	OCA NUMBER 766298	DESIGN AEG
DRAWN TMS		DATE 7/23/13
APPROVED		SCALE Noted
REVISIONS:		SHEET
		<b>12 OF 26</b>
E:\Projects\Frontgate_13-01-P925\Engineering\Phase 1\Str. 1340-E872\Str.dwg		