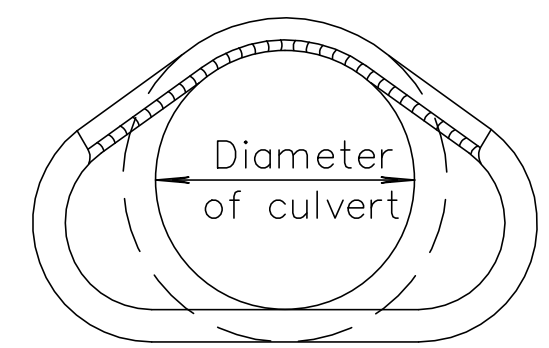
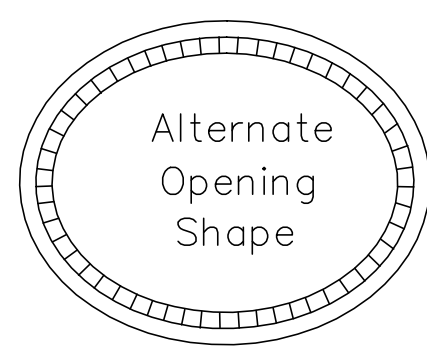
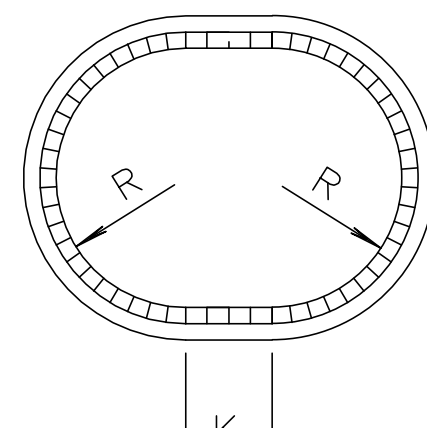


END ELEVATION (TYPE I)

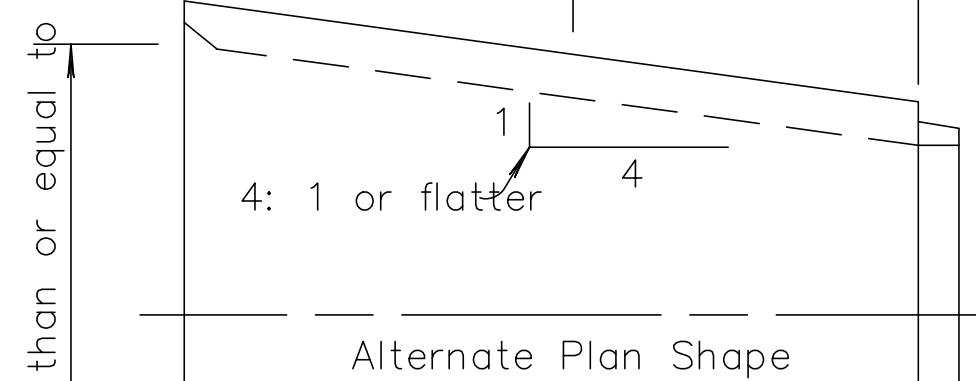
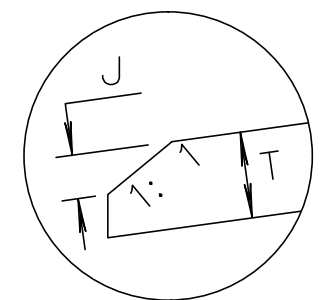


SECTION A-A

Showing rounding of inside edge of end section.

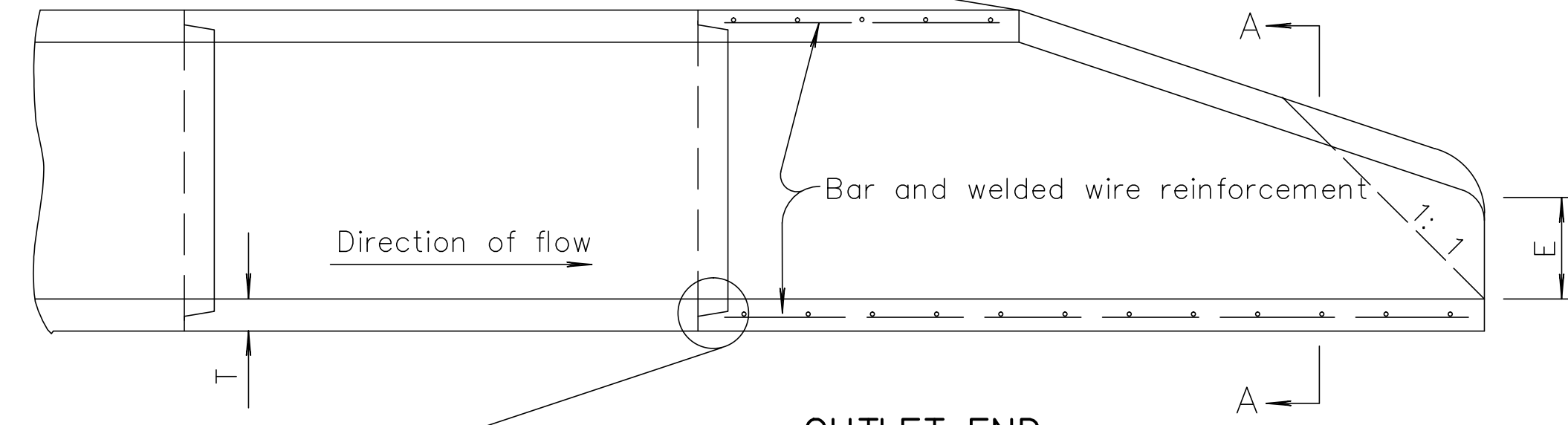


END ELEVATION (TYPE III)

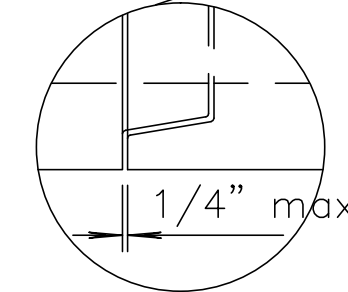


INLET END

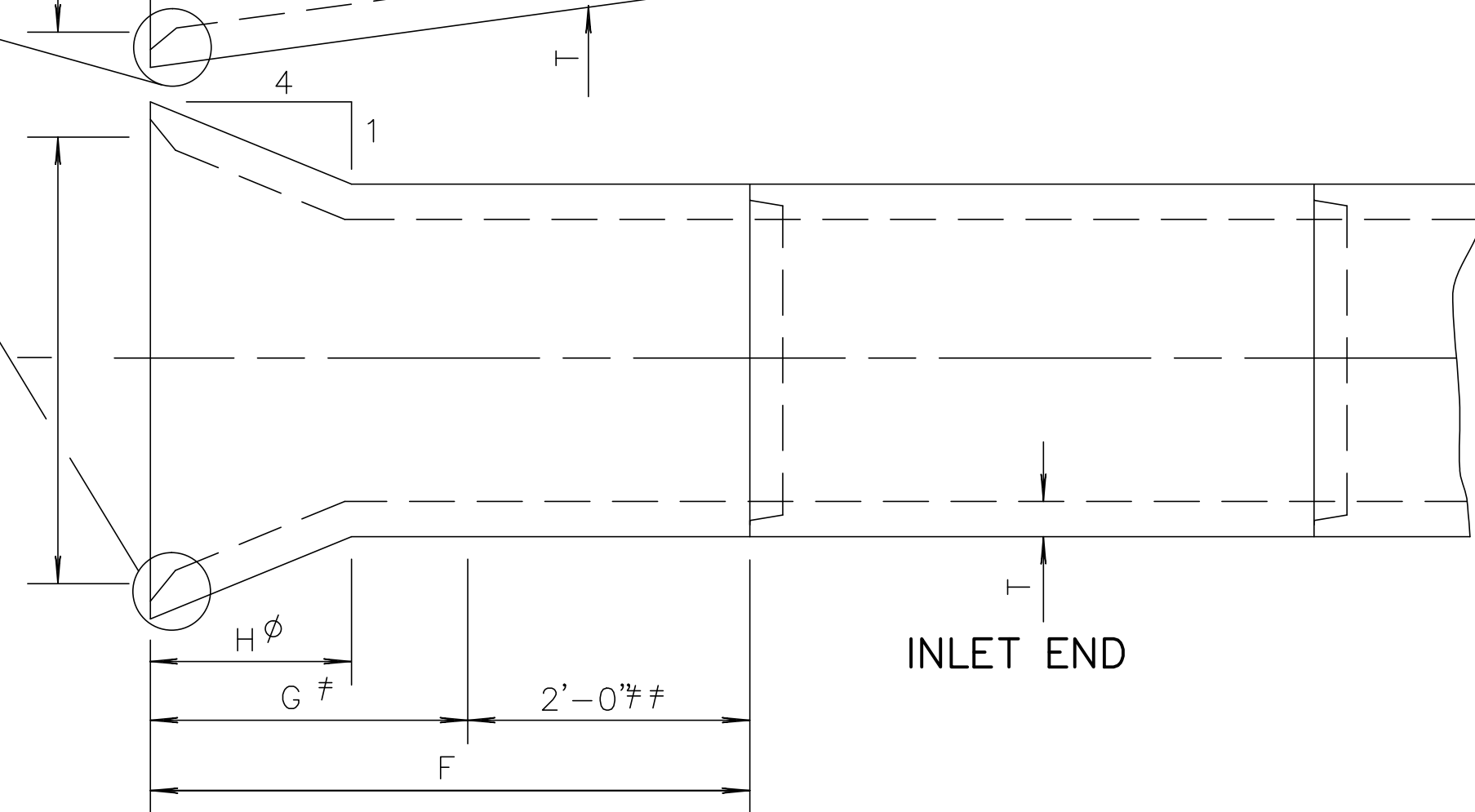
ELEVATION SECTION



OUTLET END

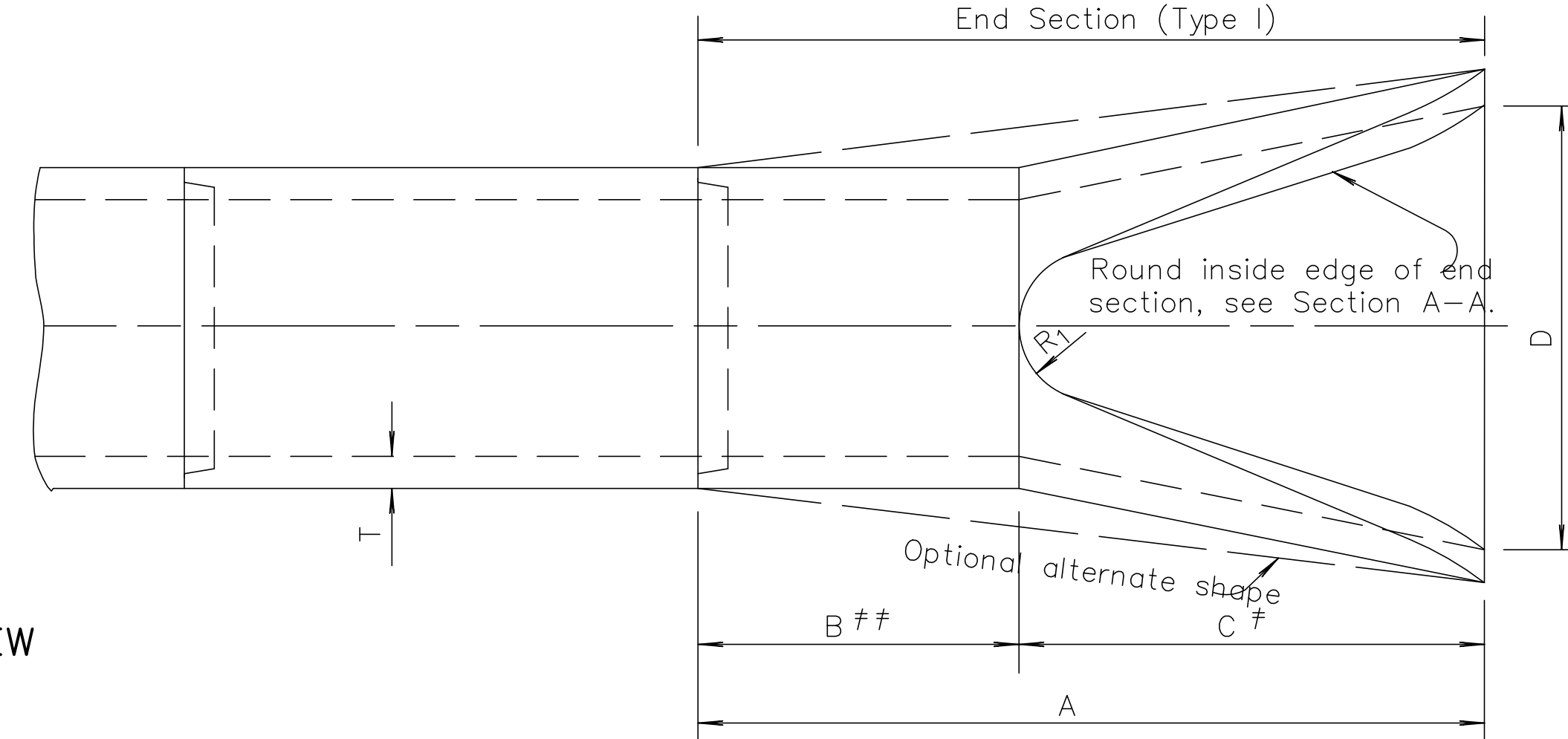


Note: There shall be no payment for gain in length due to joint fit tolerance.



INLET END

PLAN VIEW



OUTLET END

- ∅ Transition to round pipe.
- # Paid for as separate item of End Section, except when structures shall bid as alternates. In that case End Sections shall be subsidiary to bid item. "Drainage Structure No."
- ## Included in pay length of pipe.
- \* Minimum waterway area is calculated at the inside of the bevel.

END SECTION (TYPE I) NOMINAL DIMENSIONS								
Diam.	A	B##	C#	D	E	R <sub>I</sub>	Slope	T
12"	6'-0 7/8"	4'-0 7/8"	2'-0"	2'-0"	4"	9	3: 1	2"
15"	6'-1"	3'-10"	2'-3"	2'-6"	6"	11	3: 1	2 1/4"
18"	6'-1"	3'-10"	2'-3"	3'-0"	9"	12	3: 1	2 1/2"
24"	6'-1 1/2"	2'-6"	3'-7 1/2"	4'-0"	9 1/2"	14	3: 1	3"
30"	6'-1 3/4"	1'-7 3/4"	4'-6"	5'-0"	1'-0"	15	3: 1	3 1/2"
36"	8'-1 3/4"	2'-10 3/4"	5'-3"	6'-0"	1'-3"	20	3: 1	4"
42"	8'-2"	2'-11"	5'-3"	6'-6"	1'-9"	22	3: 1	4 1/2"
48"	8'-2"	2'-2"	6'-0"	7'-0"	2'-0"	22	3: 1	5"
54"	8'-2 1/4"	2'-9 1/4"	5'-5"	7'-6"	2'-3"	24	2.4 : 1	5 1/2"
60"	8'-3"	3'-3"	5'-0"	8'-0"	2'-11"	24	2: 1	6"
72"	8'-3"	1'-9"	6'-6"	9'-0"	3'-0"	24	1.86 : 1	7"
84"	9'-3 1/2"	1'-9"	7'-6 1/2"	10'-0"	3'-0"	24	1.6 : 1	8"

SIDE TAPERED INLET SECTION (TYPE III)-NOMINAL DIMENSIONS									
Diam.	Min. W.W* Area Sq.Ft.	F	G	H	I	J	K	R	T
24"	4.5	4'-3"	2'-3"	1'-5 1/8"	2'-8"	1 1/2"	8"	1'-0"	3"
30"	7.0	4'-9 1/2"	2'-9 1/2"	1'-9 1/2"	3'-4"	2"	10"	1'-3"	3 1/2"
36"	10.1	5'-4"	3'-4"	2'-1 1/2"	4'-0"	2"	1'-0"	1'-6"	4"
42"	13.7	5'-10 1/2"	3'-10 1/2"	2'-5 7/8"	4'-8"	2 1/2"	1'-2"	1'-9"	4 1/2"
48"	17.9	6'-5"	4'-5"	2'-10 1/8"	5'-4"	3"	1'-4"	2'-0"	5"
54"	22.7	6'-11 1/2"	4'-11 1/2"	3'-2 1/2"	6'-0"	3 1/2"	1'-6"	2'-3"	5 1/2"
60"	28.0	7'-6"	5'-6"	3'-6 7/8"	6'-8"	4"	1'-8"	2'-6"	6"
72"	40.3	8'-7"	6'-7"	4'-3 5/8"	8'-0"	5"	2'-0"	3'-0"	7"
84"	54.8	9'-8"	7'-8"	5'-0 3/8"	9'-4"	6"	2'-4"	3'-6"	8"

Dimensions for alternate shapes shall be equal to or greater than those shown in the table, unless otherwise shown.

CONCRETE END SECTIONS FOR CONCRETE PIPES

NORTHBOROUGH ADDITION STREET AND DRAINAGE IMPROVEMENTS RC End Section Details CITY OF WICHITA, KANSAS GARY JANZEN, P.E. - CITY ENGINEER

POE & ASSOCIATES, INC. CONSULTING ENGINEERS 5900 E. Central, Suite 200 • Wichita, KS 67208-4242 Phone 316-665-4114 • FAX 316-665-4444

**PE**

TIMOTHY R. ALSTON LICENSED PROFESSIONAL ENGINEER 11496

**FINAL**

Engineer: S. SERVIS Designer: J. UNRUH Dwg: P.1843c/843c-ROAD-Base-2-SMALLER-BEN.DIST Date: 7/10/2013

12 of 31