

NORTHBOROUGH 3RD ADDITION WICHITA, SEDGWICK COUNTY, KANSAS

STATE OF KANSAS }
COUNTY OF SEDGWICK } SS

I, R. W. LINN, A PROFESSIONAL ENGINEER IN AFORESAID STATE AND COUNTY DO HEREBY CERTIFY THAT ON THIS 25th DAY OF MARCH, 1987, I HAVE CAUSED TO BE SURVEYED AND PLATTED NORTHBOROUGH 3RD ADDITION, WICHITA, SEDGWICK COUNTY, KANSAS, INTO LOTS, BLOCKS, STREETS AND A RESERVE, THE SAME BEING A RE-PLAT OF BLOCKS 2 AND 3, AND BLOCK 4, EXCEPT LOTS 1, 2 AND 3; ALSO BLOCKS 5 AND 6 AND THE DRAINAGE DEDICATION, ALL IN NORTHBOROUGH, AN ADDITION TO WICHITA, SEDGWICK COUNTY, KANSAS, TOGETHER WITH LOT 2, BLOCK 1, NORTHBOROUGH 2ND ADDITION, WICHITA, SEDGWICK COUNTY, KANSAS, MORE PARTICULARLY KNOWN AS A TRACT OF LAND IN THE N.W. 1/4 OF SECTION 7, TOWNSHIP 27 SOUTH, RANGE 2 EAST OF THE 6TH P.M. DESCRIBED AS FOLLOWS: BEGINNING AT THE N.E. CORNER OF LOT 28, BLOCK 6, NORTHBOROUGH, AN ADDITION TO WICHITA, SEDGWICK COUNTY, KANSAS; THENCE BEARING S0°20'29"E ALONG THE EAST LINE OF SAID LOT 28, A DISTANCE OF 2038.49 FEET TO THE S.E. CORNER OF SAID LOT 28; THENCE BEARING S89°52'00"W ALONG THE SOUTH LINE OF BLOCK 6 AND A DISTANCE OF 1335.74 FEET TO THE S.W. CORNER OF BLOCK 5 IN SAID NORTHBOROUGH ADDITION; THENCE BEARING N0°07'30"E A DISTANCE OF 425.00 FEET TO THE N.W. CORNER OF SAID BLOCK 5; THENCE BEARING N0°07'00"W ACROSS ROCKHILL LANE A DISTANCE OF 70.00 FEET TO A POINT IN THE SOUTH LINE OF BLOCK 3, NORTHBOROUGH ADDITION; THENCE NORTHWEST ALONG SAID SOUTH LINE ON A CURVE TO THE RIGHT HAVING A RADIUS OF 89.83 FEET AND A CHORD OF 74.95 FEET BEARING N64°40'13"E THROUGH A CENTRAL ANGLE OF 50°43'31" AN ARC DISTANCE OF 79.53 FEET; THENCE BEARING N55°24'27"W A DISTANCE OF 8.31 FEET TO THE S.W. CORNER OF SAID BLOCK 3; THENCE ON A CURVE TO THE LEFT, ALONG THE EAST R/W OF BRAMBLEWOOD, SAID CURVE HAVING A RADIUS OF 300.72 FEET AND A CHORD OF 283.34 FEET, BEARING N22°30'32"E THROUGH A CENTRAL ANGLE OF 45°18'04" AN ARC DISTANCE OF 301.13 FEET; THENCE BEARING N0°00'00"E ALONG THE EAST R/W OF BRAMBLEWOOD A DISTANCE OF 480.64 FEET TO THE P.C. OF A CURVE TO THE LEFT HAVING A RADIUS OF 330.00 FEET; THENCE ALONG SAID CURVE THROUGH A CENTRAL ANGLE OF 44°21'00" AN ARC DISTANCE OF 255.44 FEET; THENCE BEARING N44°21'00"W ALONG THE EAST R/W OF BRAMBLEWOOD A DISTANCE OF 131.15 FEET TO THE P.C. OF A CURVE TO THE RIGHT HAVING A RADIUS OF 280.00 FEET; THENCE ALONG SAID CURVE THROUGH A CENTRAL ANGLE OF 44°21'00" AN ARC DISTANCE OF 201.25 FEET; THENCE BEARING N0°00'00"E ALONG THE EAST R/W OF BRAMBLEWOOD A DISTANCE OF 235.50 TO THE N.W. CORNER OF BLOCK 2 IN SAID NORTHBOROUGH ADDITION; THENCE BEARING N89°00'00"E A DISTANCE OF 800.00 FEET TO THE N.E. CORNER OF SAID BLOCK 2; THENCE BEARING S0°00'00"E ACROSS STRATFORD LANE AND ALONG THE SOUTH LINE OF LOT 1, BLOCK 1, SAID NORTHBOROUGH 2ND ADDITION A DISTANCE OF 528.55 FEET TO THE S.E. CORNER OF SAID LOT 1; THENCE BEARING N0°20'29"W A DISTANCE OF 476.46 FEET TO THE N.E. CORNER OF SAID LOT 1; THENCE BEARING N89°00'00"E A DISTANCE OF 193.00 FEET TO THE POINT OF BEGINNING.

R. W. LINN P.E. 3684

KNOW ALL MEN BY THESE PRESENTS THAT WE, THE UNDERSIGNED PROPERTY OWNERS OF THE LAND, AS ABOVE SET FORTH IN THE ENGINEER'S CERTIFICATE, HAVE CAUSED THE LAND TO BE SURVEYED AND PLATTED INTO LOTS, BLOCKS, STREETS AND A RESERVE, THE SAME TO BE KNOWN AS NORTHBOROUGH 3RD ADDITION, WICHITA, SEDGWICK COUNTY, KANSAS. EASEMENTS, AS INDICATED FOR THE MAINTENANCE OF PUBLIC UTILITIES, AND DRAINAGE ARE HEREBY GRANTED. THE STREETS ARE HEREBY DEDICATED TO AND FOR THE USE OF THE PUBLIC.

ALL ADJOINERS' RIGHTS-OF-ACCESS TO AND FROM 21ST STREET NORTH, OVER AND ACROSS THE NORTH LINE OF LOTS 1 AND 2, BLOCK 1 AND NORTH LINE OF RESERVE ARE HEREBY GRANTED TO THE CITY OF WICHITA, PROVIDED HOWEVER THAT LOTS 1 AND 2, BLOCK 1 SHALL HAVE ACCESS TO 21ST STREET AT THREE (3) LOCATIONS, ONE (1) EACH TO LOTS 1 AND 2, AND ONE (1) JOINT ACCESS BETWEEN LOTS 1 AND 2, AS SHOWN. ALL LOCATIONS TO BE DETERMINED BY THE CITY ENGINEER OF THE CITY OF WICHITA, KANSAS. A RESERVE SHALL BE OWNED AND MAINTAINED BY THE OWNERS OF LOTS 1 AND 2, BLOCK 2 ACCORDING WITH A DECLARATION OF LAND OWNERS ASSOCIATION AGREEMENT AND SHALL BE RESERVED FOR UTILITIES, DRAINAGE, RETENTION, DETENTION, LANDSCAPING, PEDESTRIAN WAYS AND NON-PERMANENT RECREATIONAL FACILITIES. MINIMUM PAD ELEVATION REQUIRED AS FOLLOWS: LOT 1 AND LOT 2, BLOCK 2 ELEV + 1387.4 WSL.

ALL PORTIONS OF NORTHBOROUGH, AN ADDITION TO WICHITA, SEDGWICK COUNTY, KANSAS, AND NORTHBOROUGH 2ND ADDITION, WICHITA, SEDGWICK COUNTY, KANSAS, WITHIN THE ABOVE DESCRIBED TRACT OF LAND ARE HEREBY VACATED AND REPLATTED BY VIRTUE OF KSA 12-512(b) AMENDED.

OWNERS:
CO-EXECUTORS OF THE ESTATE OF THEODORE GORE:
Andrew E. Gore Rosalyn W. Gore
ANDREW E. GORE ROSALYN W. GORE
CO-EXECUTOR & INDIVIDUAL OWNER

T. J. LAND & CATTLE COMPANY
TEENA JEAN SLATKIN, PRESIDENT

OWNERS:
John S. Beren Joan S. Beren
ROBERT W. BEREN JOAN S. BEREN

MID KANSAS JEWISH WELFARE FEDERATION, INC.
HOWARD N. MARCUS # 870622

STATE OF KANSAS }
COUNTY OF SEDGWICK } SS

BE IT REMEMBERED THAT ON THIS 10th DAY OF NOVEMBER, 1986, BEFORE ME, A NOTARY PUBLIC IN AFORESAID STATE AND COUNTY, CAME HOWARD N. MARCUS OF MID KANSAS JEWISH WELFARE FEDERATION, INC., TO ME PERSONALLY KNOWN TO BE THE SAME PERSON WHO EXECUTED THE FOREGOING INSTRUMENT OF WRITING AND DULY ACKNOWLEDGE THE EXECUTION OF SAME FOR AND ON BEHALF AND AS THE VOLUNTARY ACT AND DEED OF SAID FEDERATION, IN TESTIMONY WHEREOF I HAVE HERETO SET MY HAND AND AFFIXED MY NOTARIAL SEAL THE DAY AND YEAR ABOVE WRITTEN.

LISA CLARK, NOTARY PUBLIC
8-12-87

STATE OF KANSAS }
COUNTY OF SEDGWICK } SS

BE IT REMEMBERED THAT ON THIS 10th DAY OF NOVEMBER, 1986, BEFORE ME, A NOTARY PUBLIC IN AFORESAID STATE AND COUNTY, CAME ANDREW E. GORE CO-EXECUTOR OF THE ESTATE OF THEODORE GORE AND ROSALYN W. GORE INDIVIDUAL OWNER TO BE PERSONALLY KNOWN TO BE THE SAME PERSONS WHO EXECUTED THE FOREGOING INSTRUMENT OF WRITING AND DULY ACKNOWLEDGE THE EXECUTION OF SAME FOR AND ON BEHALF AND AS THE VOLUNTARY ACT AND DEED OF SAID ESTATE, IN TESTIMONY WHEREOF I HAVE HERETO SET MY HAND AND AFFIXED MY NOTARIAL SEAL THE DAY AND YEAR ABOVE WRITTEN.

JUDITH A. SUMMITT, NOTARY PUBLIC
STATE OF COLORADO }
COUNTY OF DENVER } SS

BE IT REMEMBERED THAT ON THIS 9th DAY OF NOVEMBER, 1986, BEFORE ME, A NOTARY PUBLIC IN AFORESAID STATE AND COUNTY, CAME TEENA JEAN SLATKIN, PRESIDENT OF T. J. LAND AND CATTLE COMPANY, TO ME PERSONALLY KNOWN TO BE THE SAME PERSONS WHO EXECUTED THE FOREGOING INSTRUMENT OF WRITING AND DULY ACKNOWLEDGE THE EXECUTION OF SAME FOR AND ON BEHALF AND AS THE VOLUNTARY ACT AND DEED OF SAID COMPANY, IN TESTIMONY WHEREOF I HAVE HERETO SET MY HAND AND AFFIXED MY NOTARIAL SEAL THE DAY AND YEAR ABOVE WRITTEN.

WALTER SLATKIN, NOTARY PUBLIC
STATE OF KANSAS }
COUNTY OF SEDGWICK } SS

BE IT REMEMBERED THAT ON THIS 10th DAY OF NOVEMBER, 1986, BEFORE ME, A NOTARY PUBLIC IN AFORESAID STATE AND COUNTY, CAME ROBERT W. BEREN AND JOAN S. BEREN, TO ME PERSONALLY KNOWN TO BE THE SAME PERSONS WHO EXECUTED THE FOREGOING INSTRUMENT OF WRITING AND DULY ACKNOWLEDGE THE EXECUTION OF SAME AS THEIR VOLUNTARY ACT AND DEED IN TESTIMONY WHEREOF I HAVE HERETO SET MY HAND AND AFFIXED MY NOTARIAL SEAL THE DAY AND YEAR ABOVE WRITTEN.

LINDA SEVIER, NOTARY PUBLIC
STATE OF KANSAS }
COUNTY OF SEDGWICK } SS

WE GORE OIL COMPANY, A KANSAS CORPORATION HOLDER OF A MORTGAGE ON THE ABOVE DESCRIBED PROPERTY DO HEREBY CONSENT TO THE PLATTING OF NORTHBOROUGH 3RD ADDITION, WICHITA, SEDGWICK COUNTY, KANSAS.

STATE OF KANSAS }
COUNTY OF SEDGWICK } SS

BE IT REMEMBERED THAT ON THIS 10th DAY OF NOVEMBER, 1986, BEFORE ME, A NOTARY PUBLIC IN AFORESAID STATE AND COUNTY, CAME GENE FERRIN VICE-PRESIDENT OF GORE OIL COMPANY TO ME PERSONALLY KNOWN TO BE THE SAME PERSON WHO EXECUTED THE FOREGOING INSTRUMENT OF WRITING AND DULY ACKNOWLEDGE THE EXECUTION OF SAME FOR AND ON BEHALF AND AS THE VOLUNTARY ACT AND DEED OF SAID COMPANY, IN TESTIMONY WHEREOF I HAVE HERETO SET MY HAND AND AFFIXED MY NOTARIAL SEAL THE DAY AND YEAR ABOVE WRITTEN.

JUDITH A. SUMMITT, NOTARY PUBLIC
STATE OF KANSAS }
COUNTY OF SEDGWICK } SS

THIS PLAT APPROVED AND ALL DEDICATIONS SHOWN HEREON ARE ACCEPTED BY THE WICHITA-SEGWICK COUNTY METROPOLITAN AREA PLANNING COMMISSION, OF WICHITA, KANSAS, DATED THIS 24th DAY OF JULY, 1986.

DAVID BAYDUTH, VICE-CHAIRMAN
MICHAEL E. LINDBERK, SECRETARY

THIS PLAT APPROVED AND ALL DEDICATIONS SHOWN HEREON ARE ACCEPTED BY THE CITY COMMISSION OF THE CITY OF WICHITA, KANSAS, DATED THIS 17th DAY OF MARCH, 1987.

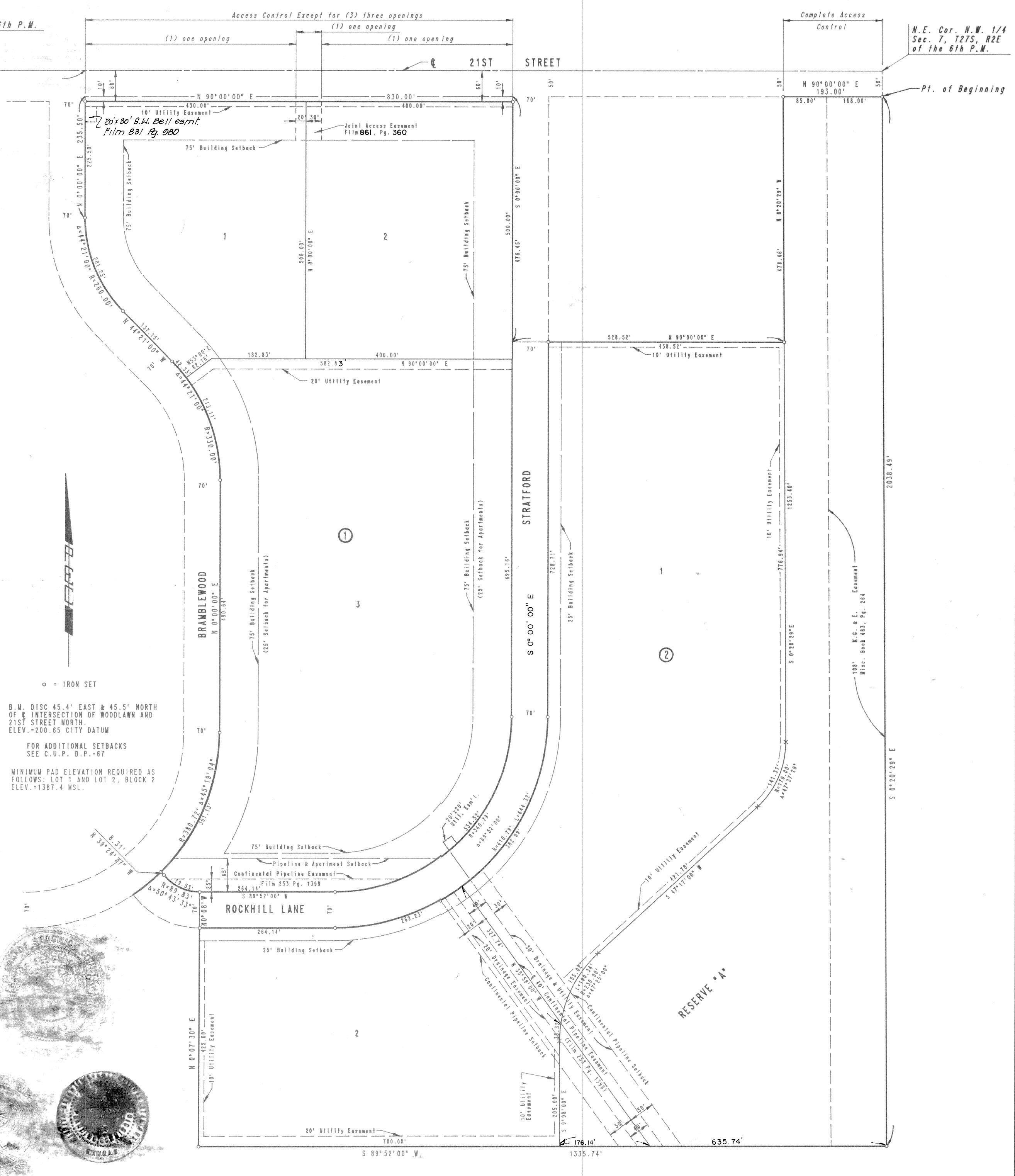
TOM CASADO, MAYOR
DALE REA, DEPUTY CITY CLERK

ENTERED ON TRANSFER RECORD THIS 25th DAY OF MARCH, 1987.
DON WRIGHT, COUNTY CLERK

THIS IS TO CERTIFY THAT THIS INSTRUMENT WAS FILED FOR RECORD IN THE REGISTER OF DEEDS OFFICE AT 1:32 P.M., ON THIS 25th DAY OF MARCH, 1987.
PAT KETTLER, REGISTER OF DEEDS

ED RESA, DEPUTY

This digital plat record accurately reproduces in all details the original plat filed with the Sedgwick County Register of Deeds. Digitized under the supervision of Register of Deeds Bill Meek by Sedgwick County Geographic Information Systems.
Bill Meek, Register of Deeds



Restrictive Covenant 7-015 Pg. 1418

NORTHBOROUGH ADDITION
STREET AND DRAINAGE IMPROVEMENTS
Plat

CITY OF WICHITA, KANSAS
GARY JANZEN, P.E. - CITY ENGINEER

POE & ASSOCIATES, INC.
CONSULTING ENGINEERS
5900 E. Central, Suite 200 • Wichita, KS 67208-4242
Phone 316-665-4114 • FAX 316-665-4444

LIMITED LICENSED PROFESSIONAL ENGINEER
KANSAS
11496
7/8/13

FINAL
Engineer: S. SERVIS
Designer: J. UNRUH
Dwg: P. 1843c, 1843c-ROAD-Base-2-SMALLER BEN DIST
Date: 7/10/2013

Sheet of 31