



**STORM WATER QUALITY TO EXIST. OUTLET #2**

Total Area = 48.4 Ac.  
 Area Developed Prior to SWQ Regulations = 17.9 Ac.  
 Impervious Area = 9.15 Ac.  
 Disturbed Pervious = 21.35 Ac.  
 WQv = 1.40 Ac. ft.  
 CPv = 3.07 Ac. ft.

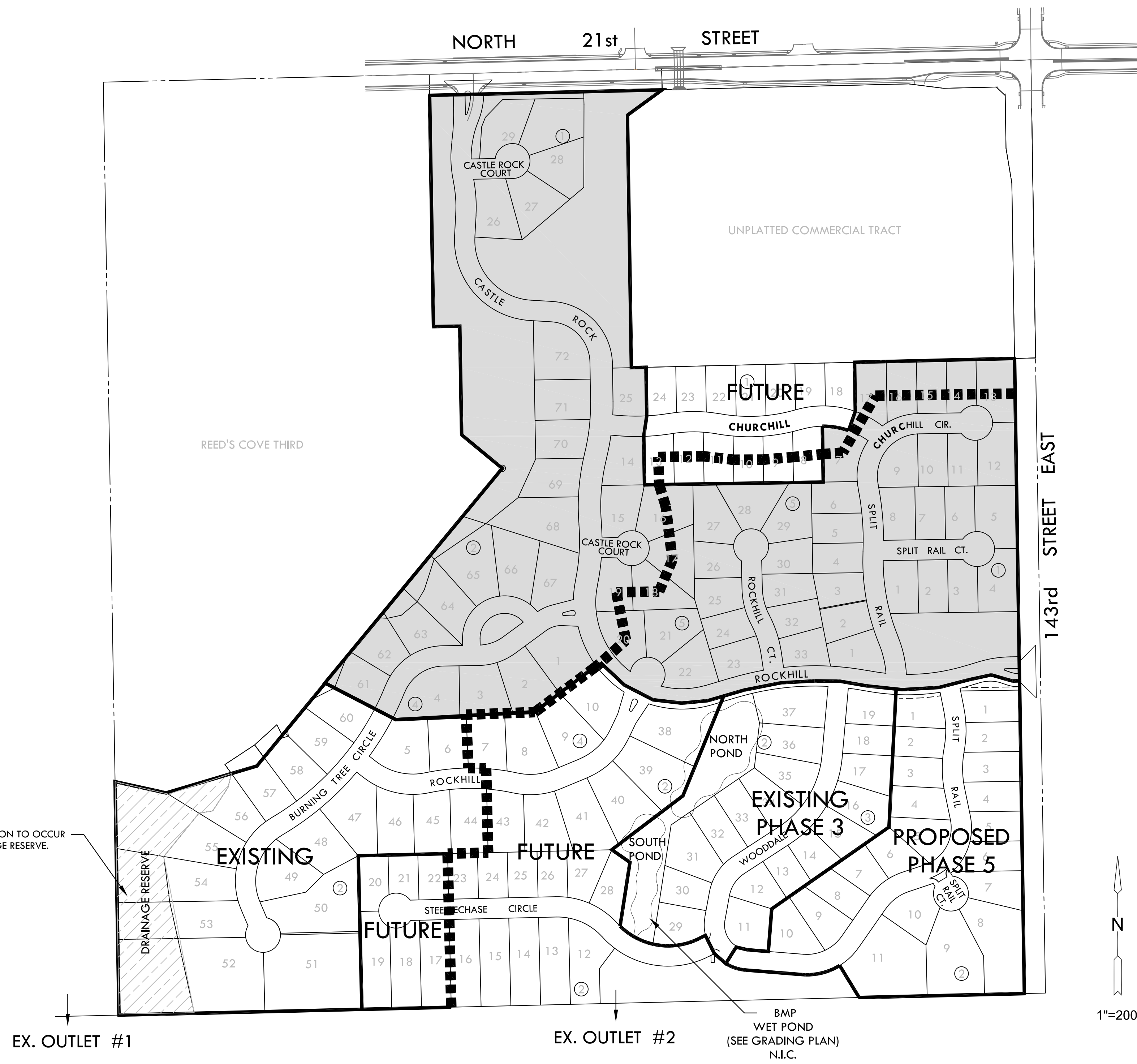
THIS OVERALL PROJECT SATISFIES CHAPTER 16.32 OF THE CITY CODE BY THE CONSTRUCTION OF PONDS WITHIN RESERVE "C" FOR STORMWATER RETENTION AND WATER QUALITY TREATMENT

- Storm Water Quality for area draining to Ex. Outlet #1 provided by Reed's Cove Lake.
- Storm Water Quality for area draining to Existing Outlet #2 provided by North and South Krug South Ponds.

**LEGEND**

-  DEVELOPED PRIOR TO SWS REGULATIONS
-  WATERSHED BOUNDARY

NOTE:  
NO CONSTRUCTION TO OCCUR WITHIN DRAINAGE RESERVE.



**NORTH POND**

STAGE	STORAGE (AC. FT.)	DISCHARGE (CFS)
1355.50	0.000	0.000
1356.00	0.516	0.473
1357.00	1.636	1.057
1357.75	2.560	1.337
1358.00	2.880	9.743
1358.50	3.554	44.83
1359.00	4.266	87.89
1360.00	5.800	191.94

**SOUTH POND**

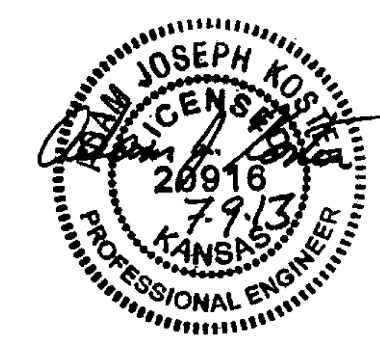
STAGE	STORAGE (AC. FT.)	DISCHARGE (CFS)
1353.50	0.000	0.000
1354.00	0.280	12.04
1355.00	0.924	62.55
1356.00	1.681	134.58
1357.00	2.558	222.94
1358.00	3.575	304.53
1358.50	4.140	333.59

STORM WATER SEWER PLAN FOR  
**KRUG SOUTH ADDITION**  
PHASE 5

©2013 MKEC Engineering All Rights Reserved  
 www.mkec.com  
 These drawings and their contents, including, but not limited to, all concepts, designs, & ideas are the exclusive property of MKEC Engineering (MKEC), and may not be used or reproduced in any way without the express consent of MKEC.

**DRAINAGE PLAN**

PROJECT NO.	468-84835
DATE	JULY 2013
SCALE	AS SHOWN
DESIGNED	AJK
DRAWN	KKL
CHECKED	GJA



#	---	###/###/###
NO.	REVISION	DATE

SHEET NO.